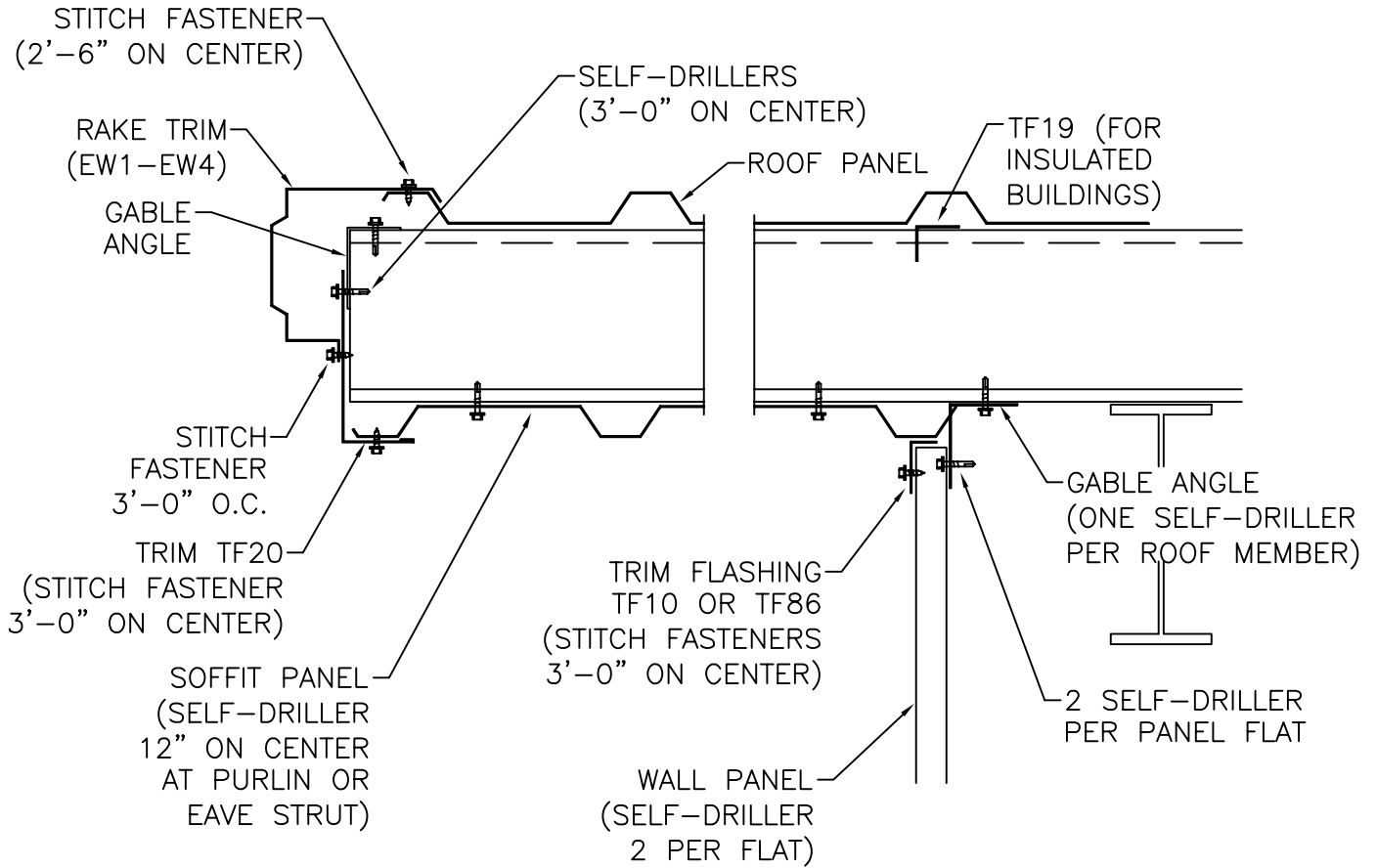


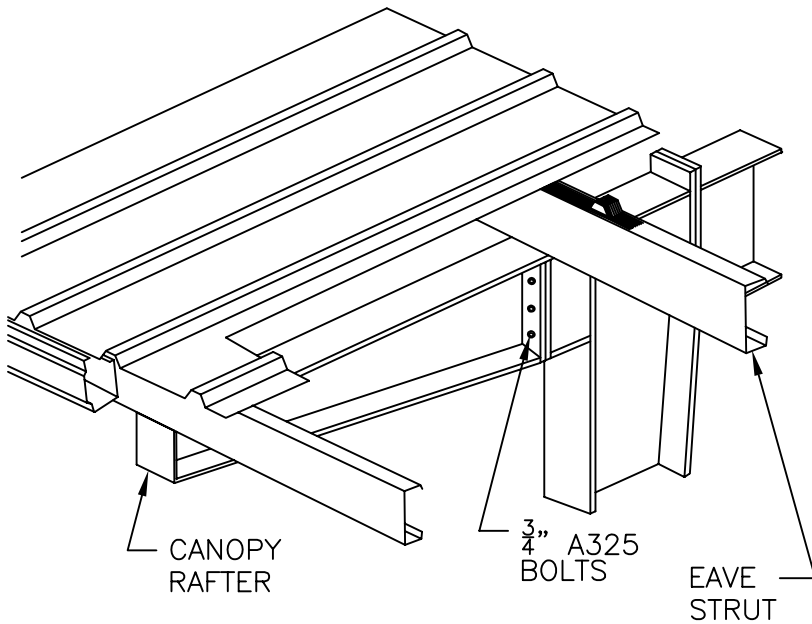
PURLIN EXTENSION WITH SOFFIT PANELS
(SHEETED ENDWALL) (RIBBED ROOF)

SHT. NO. FA1	
DATE MAY 03	REV. 00

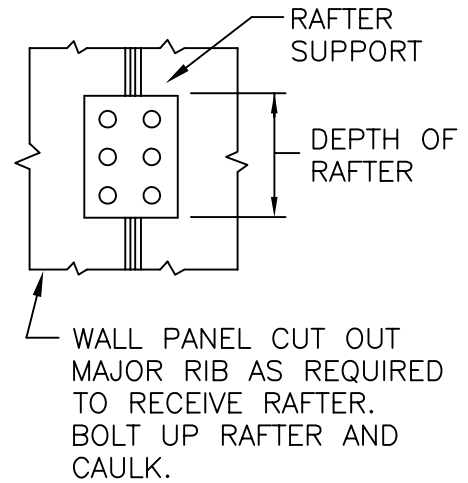


EAVE LINE-EXPOSED CANOPY RAFTER
W/GUTTER AND SOFFIT PANEL
(RIBBED ROOF)

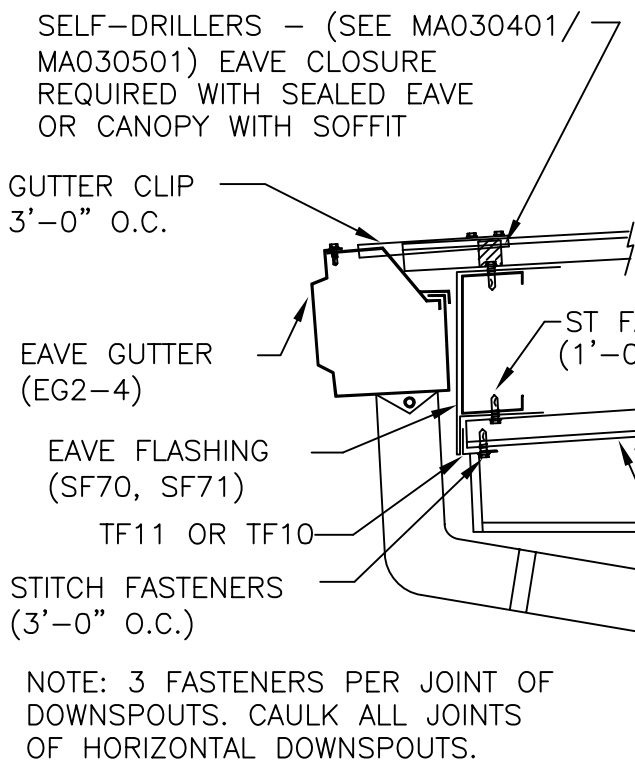
SHT. NO. FA5	
DATE MAR. 06	REV. 00



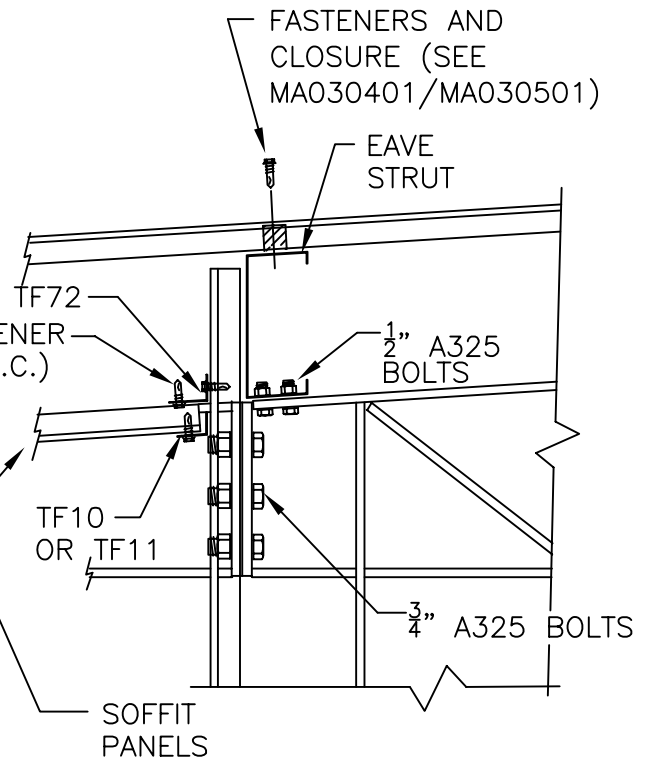
HIGH SIDE CANOPY



PREPARATION OF MAJOR RIB FOR RAFTER



EAVE DETAIL

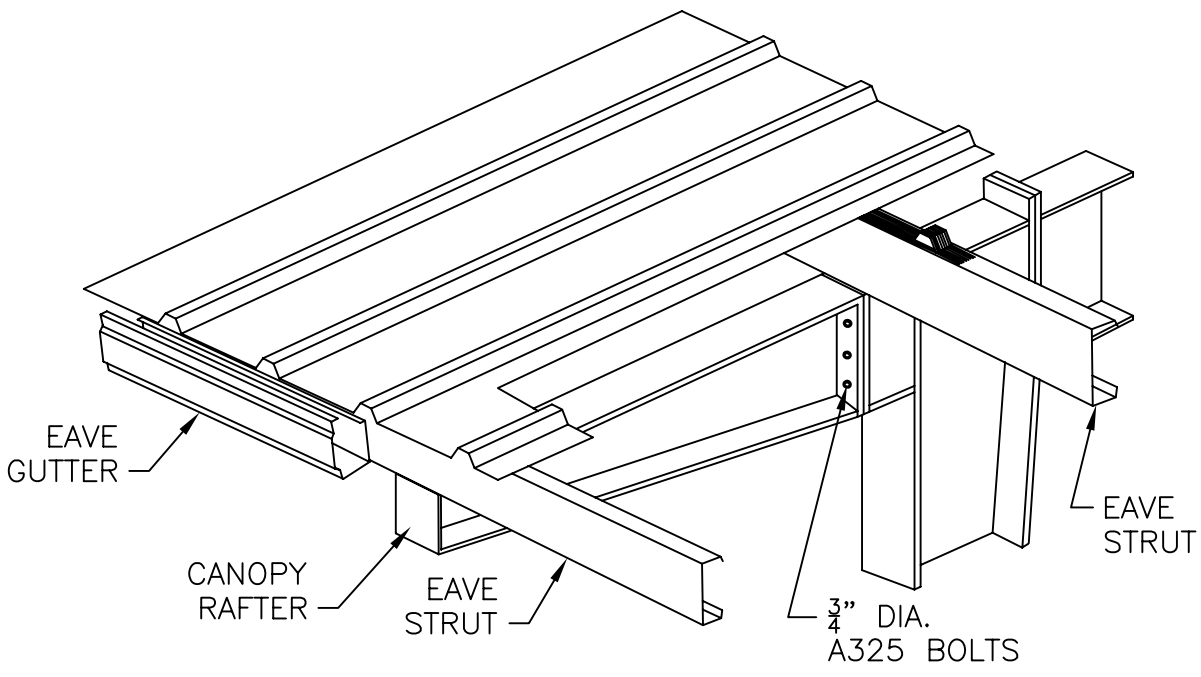


DETAIL AT WALL LINE

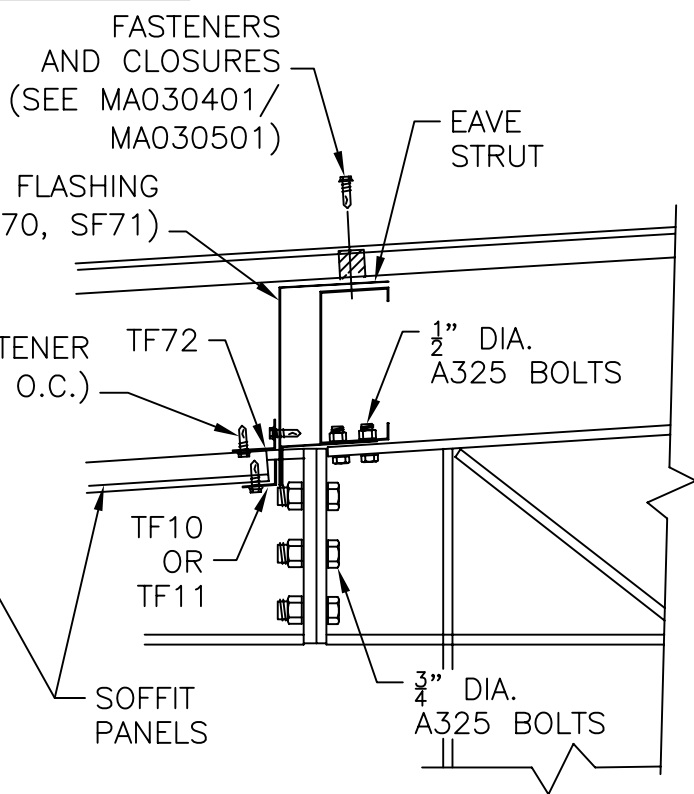
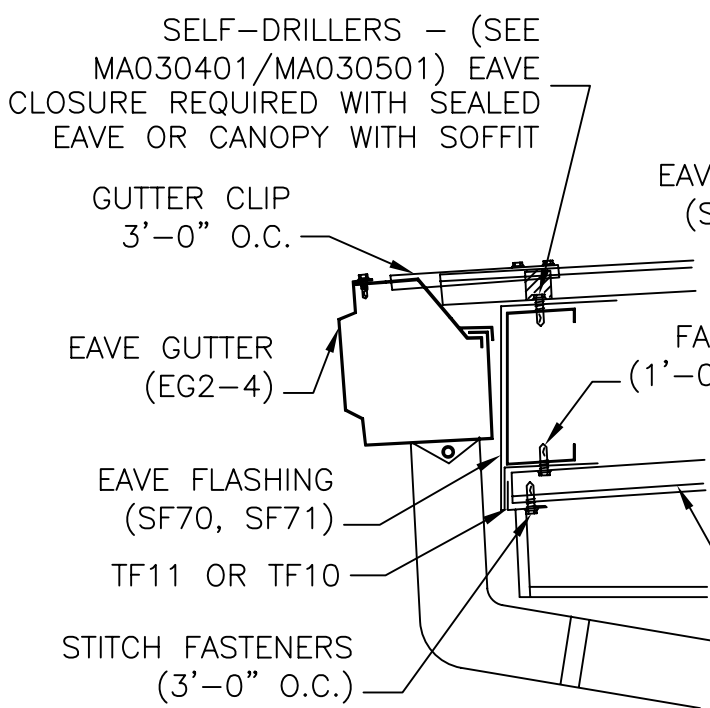
NOTE: ERECTOR TO FIELD "PITCH" SHEETS AT GUTTER

EAVE LINE-EXPOSED CANOPY RAFTER
W/GUTTER AND SOFFIT AT OPEN WALL
(RIBBED ROOF)

SHT. NO. FA6	
DATE MAR. 06	REV. 00



EAVE LINE CANOPY



NOTE: 3 FASTENERS PER JOINT OF DOWNSPOUTS. CAULK ALL JOINTS OF HORIZONTAL DOWNSPOUTS.

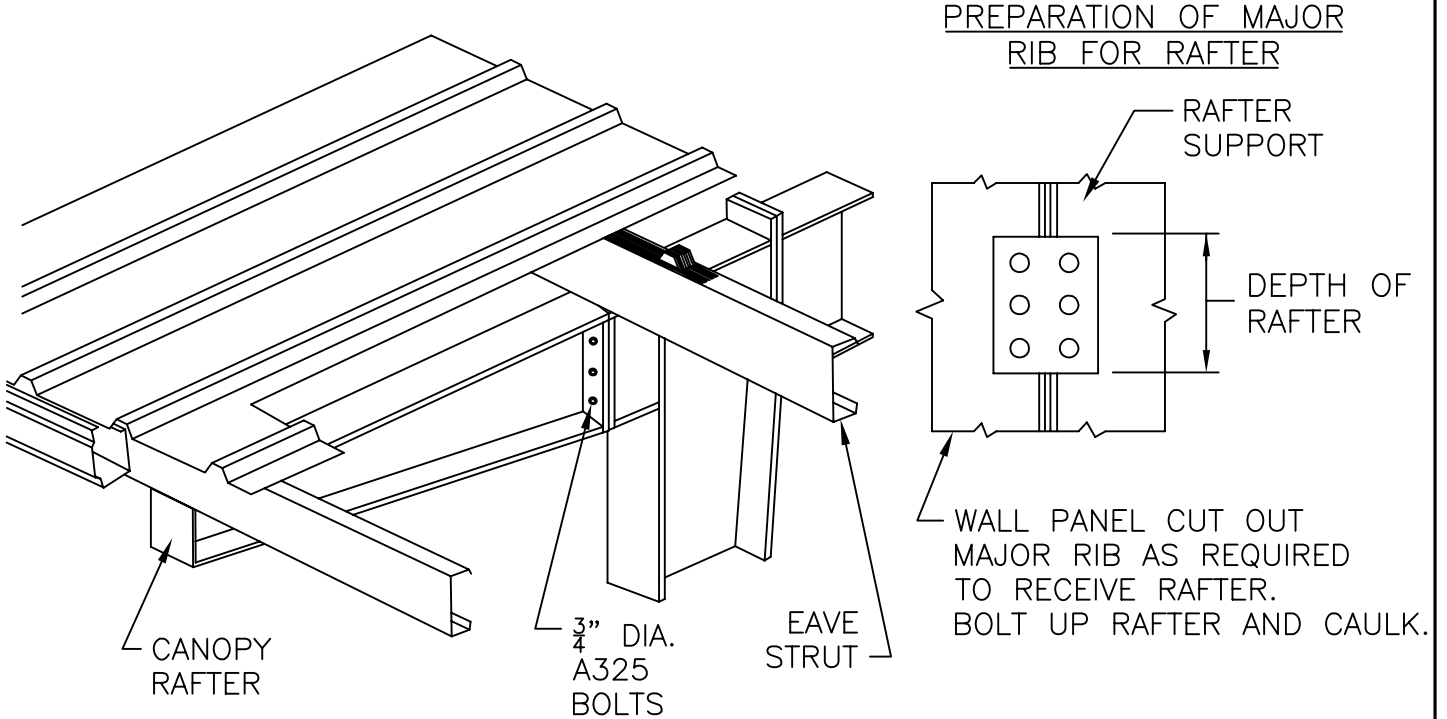
EAVE DETAIL

DETAIL AT WALL LINE

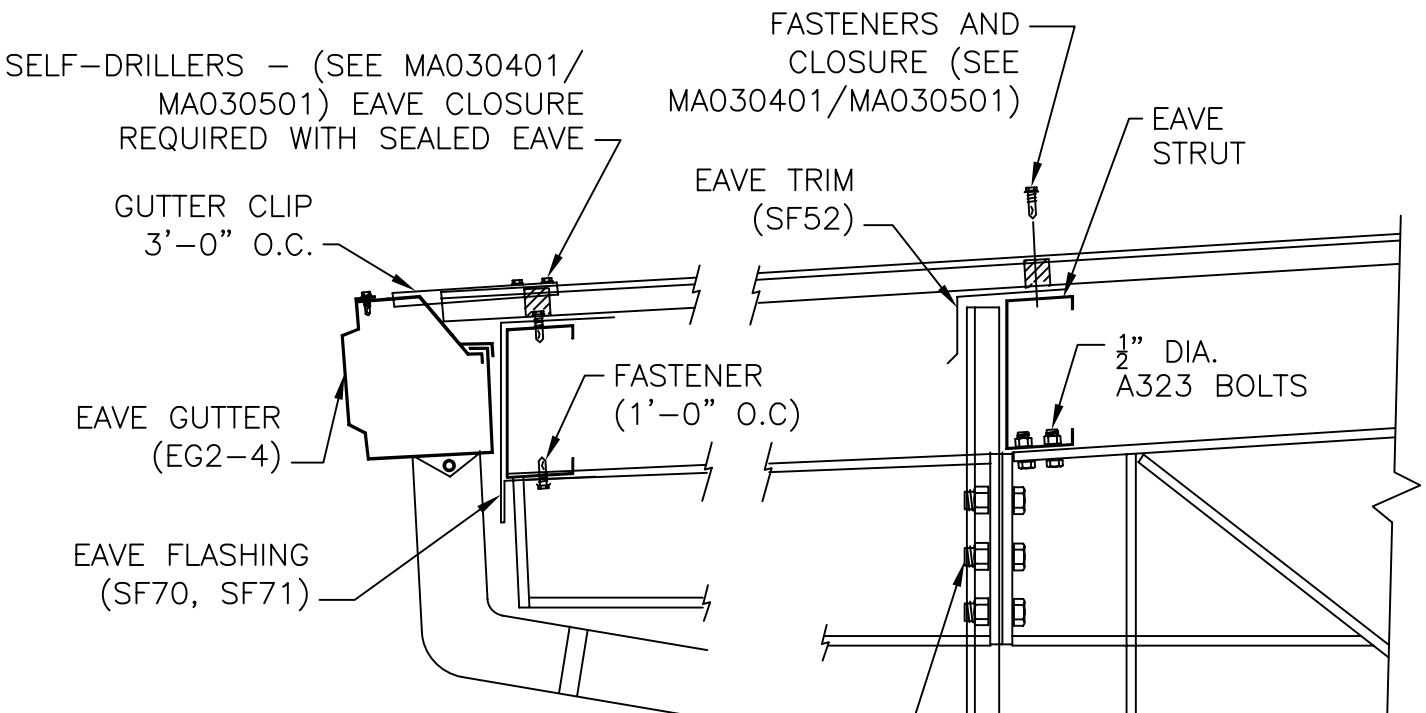
NOTE: ERECTOR TO FIELD "PITCH" SHEETS AT GUTTER

EAVE LINE-EXPOSED CANOPY RAFTER
W/GUTTER AND NO SOFFIT PANELS
(RIBBED ROOF)

SHT. NO. FA7	
DATE MAR. 06	REV. 00

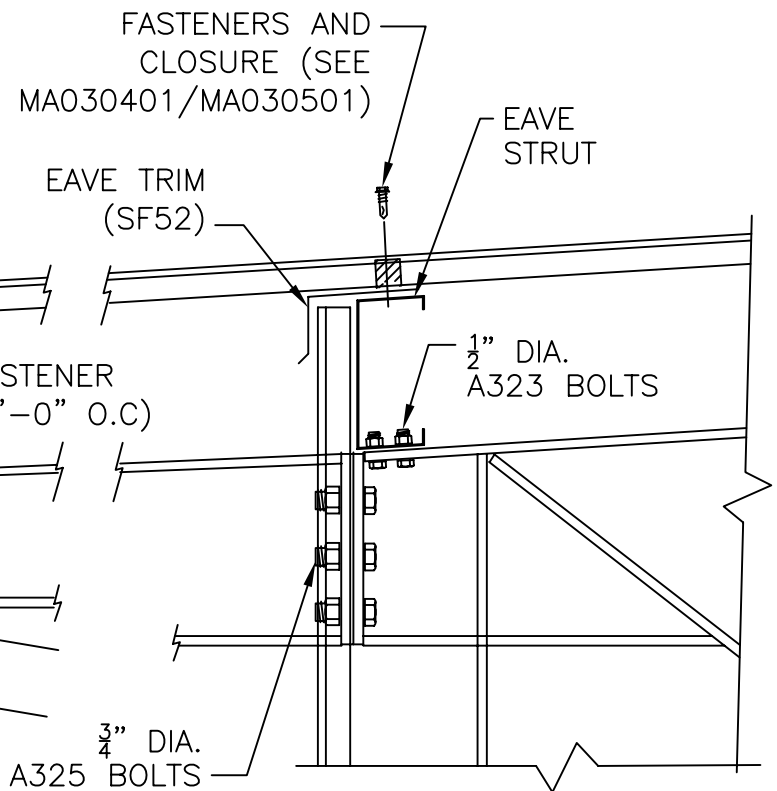


HIGH SIDE CANOPY



NOTE: 3 FASTENERS PER JOINT OF DOWNSPOUTS. CAULK ALL JOINTS OF HORIZONTAL DOWNSPOUTS.

EAVE DETAIL

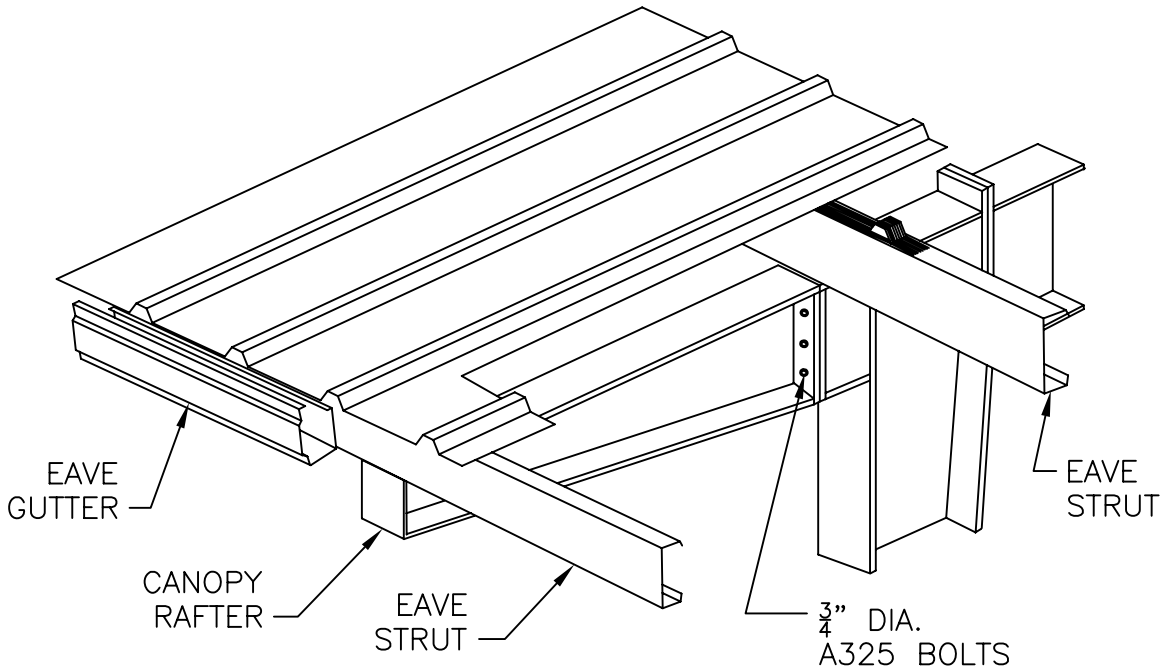


DETAIL AT WALL LINE

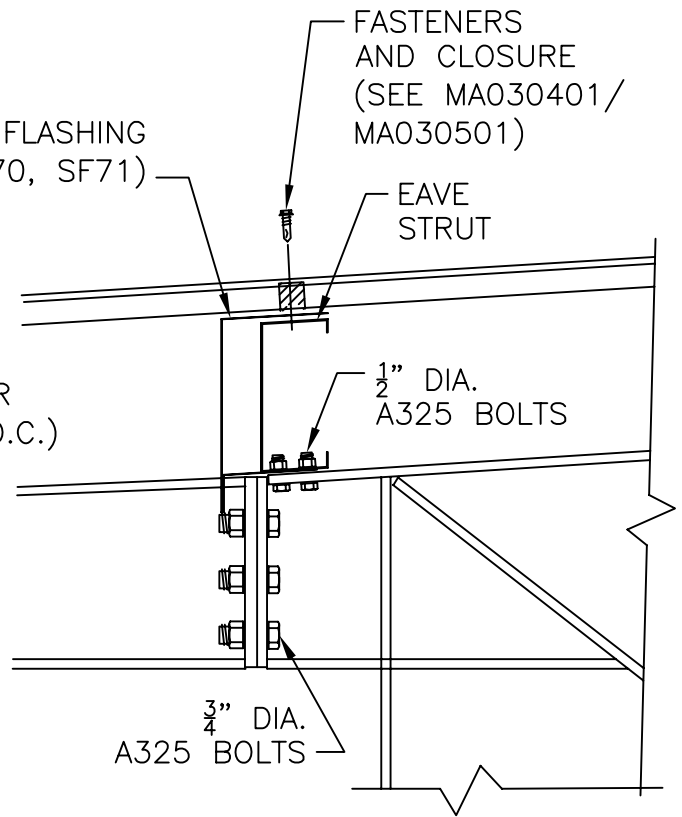
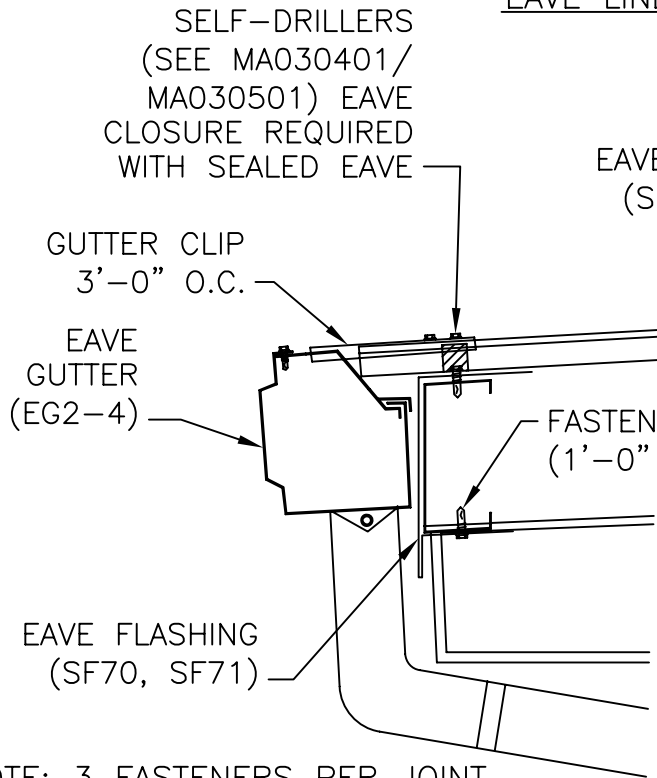
NOTE: ERECTOR TO FIELD "PITCH" SHEETS AT GUTTER

EAVE LINE-EXPOSED CANOPY RAFTER
W/GUTTER AND NO SOFFIT AT OPEN WALL
(RIBBED ROOF)

SHT. NO.	FAB
DATE	MAR. 06 00



EAVE LINE CANOPY



NOTE: 3 FASTENERS PER JOINT OF DOWNSPOUTS. CAULK ALL JOINTS OF HORIZONTAL DOWNSPOUTS.

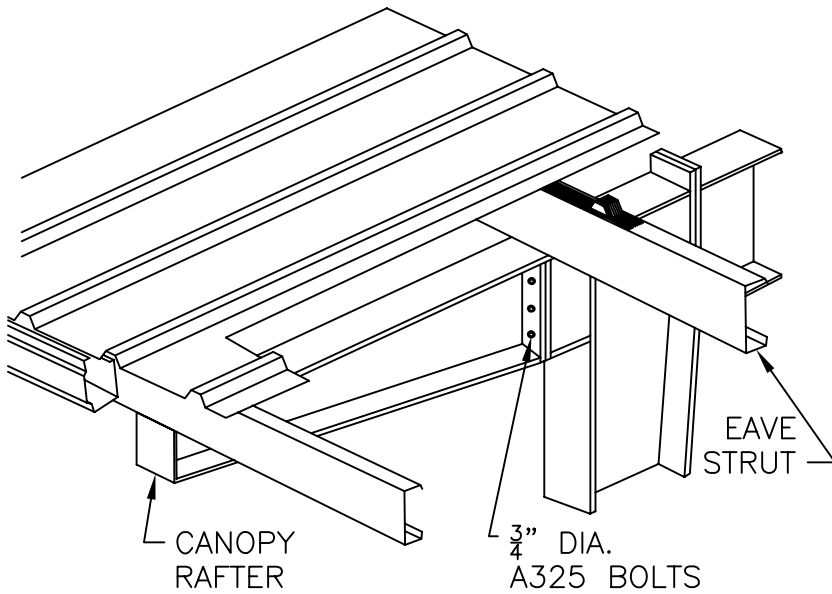
EAVE DETAIL

DETAIL AT WALL LINE

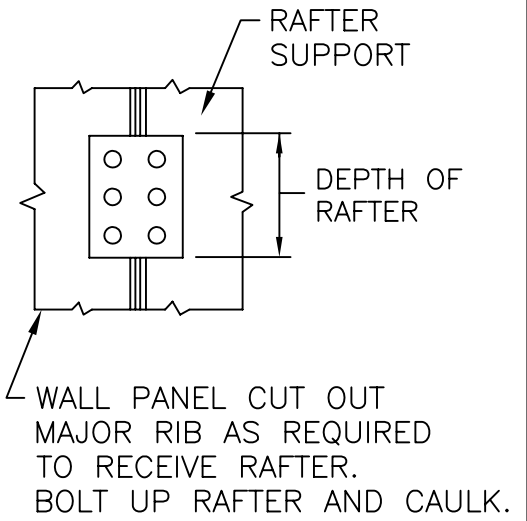
NOTE: ERECTOR TO FIELD "PITCH" SHEETS AT GUTTER

HIGH SIDE EXPOSED CANOPY RAFTER
WITH WALL PANEL
(RIBBED ROOF)

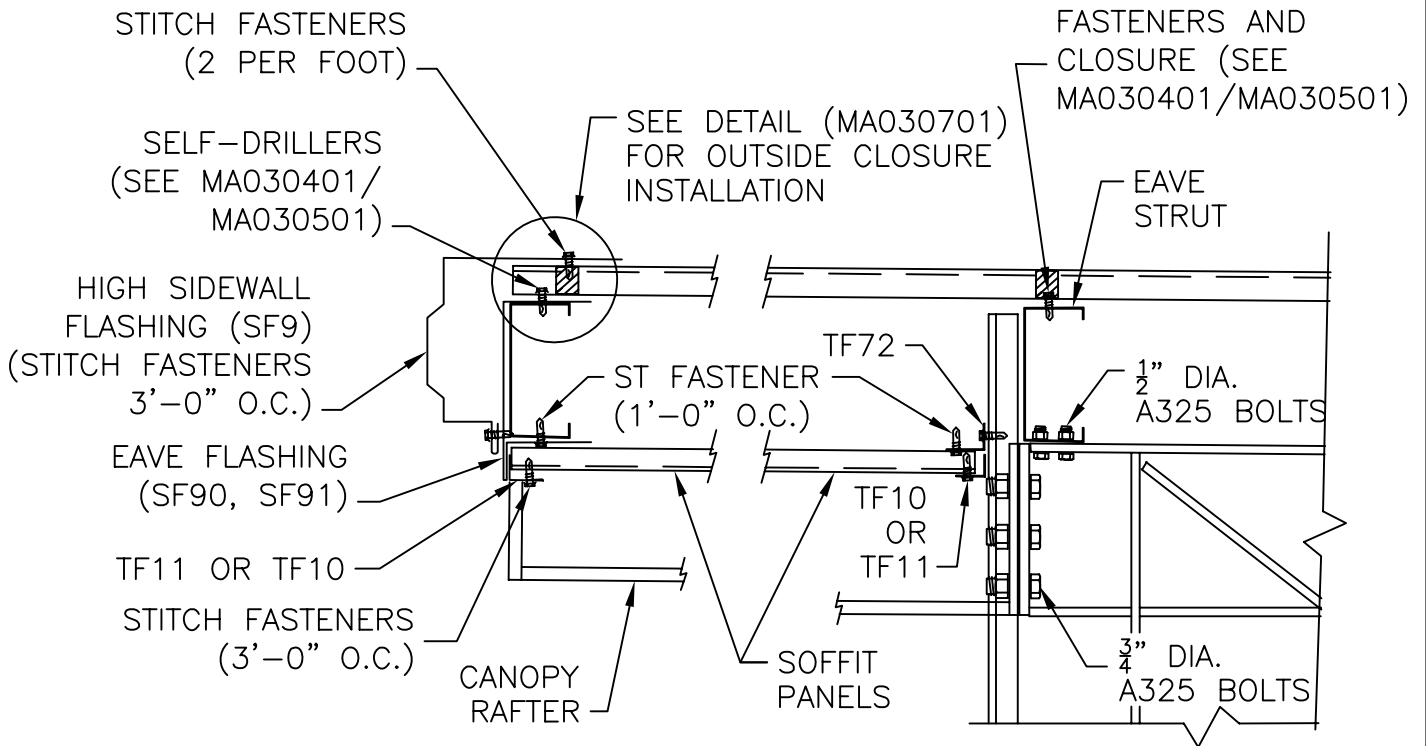
SHT. NO.	FA9
DATE	REV.
MAR. 06	00



HIGH SIDE CANOPY



PREPARATION OF MAJOR RIB FOR RAFTER

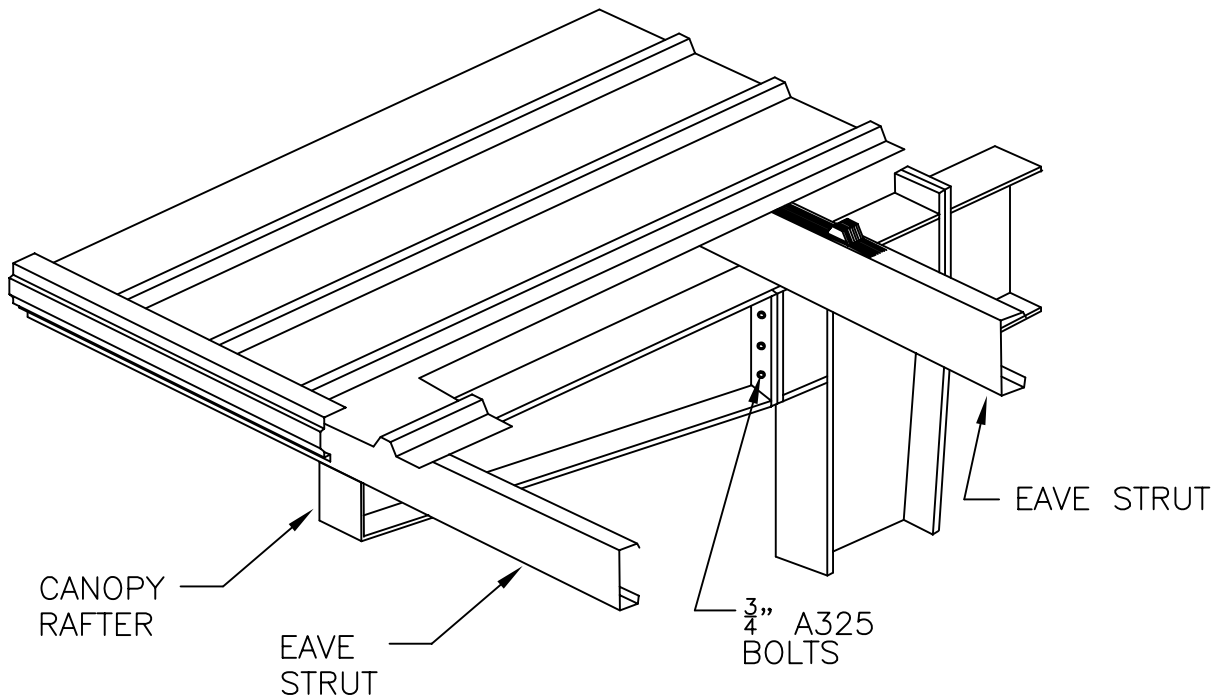


HIGH SIDE DETAIL

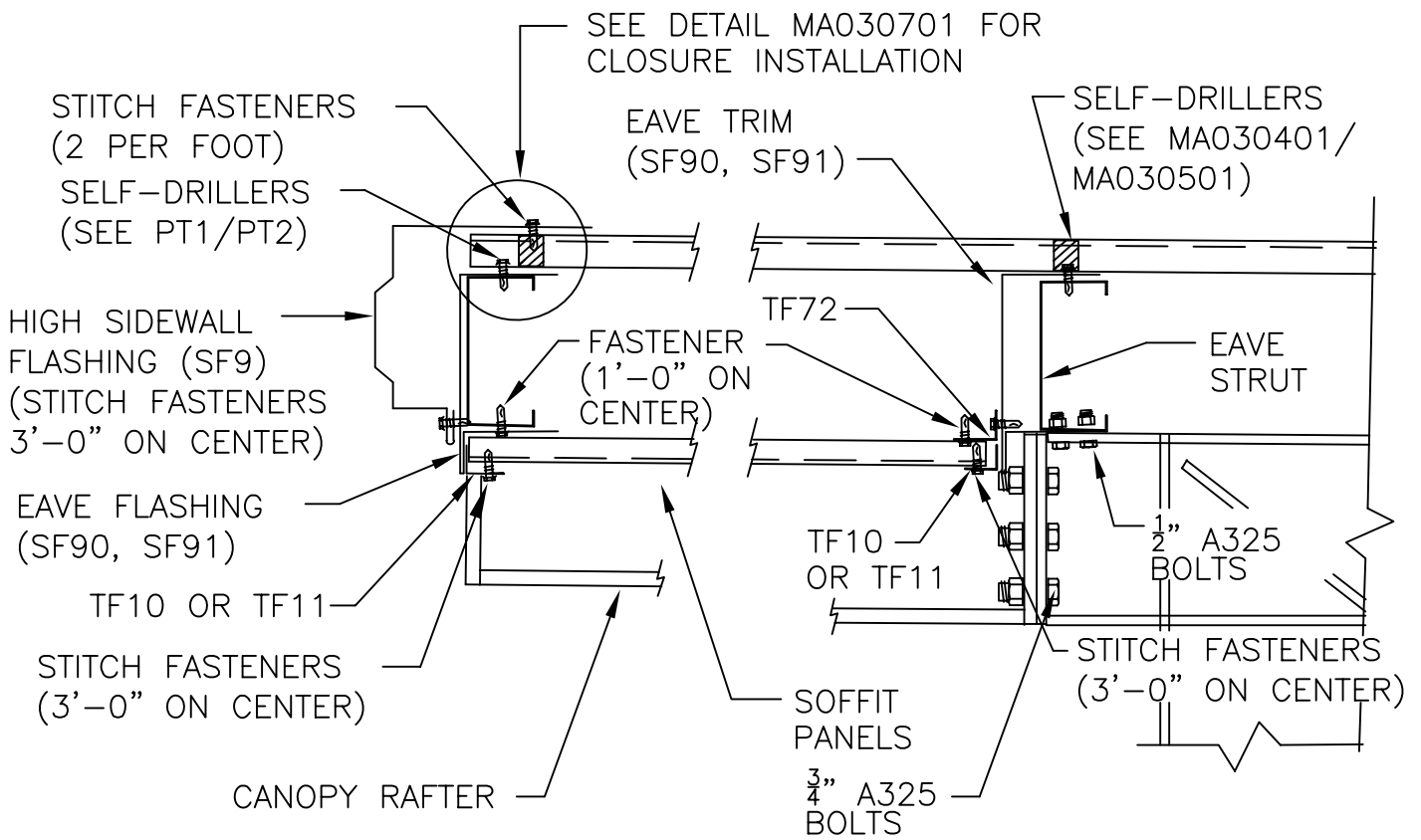
DETAIL AT WALL LINE

HIGH SIDE EXPOSED CANOPY RAFTER
WITH NO WALL PANELS
(RIBBED ROOF)

SHT. NO. FA10	
DATE MAR. 06	REV. 00



HIGH SIDE CANOPY



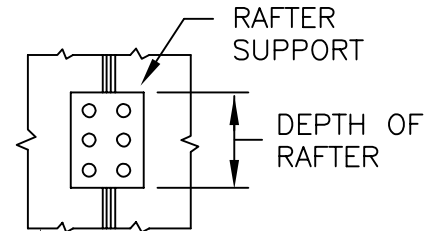
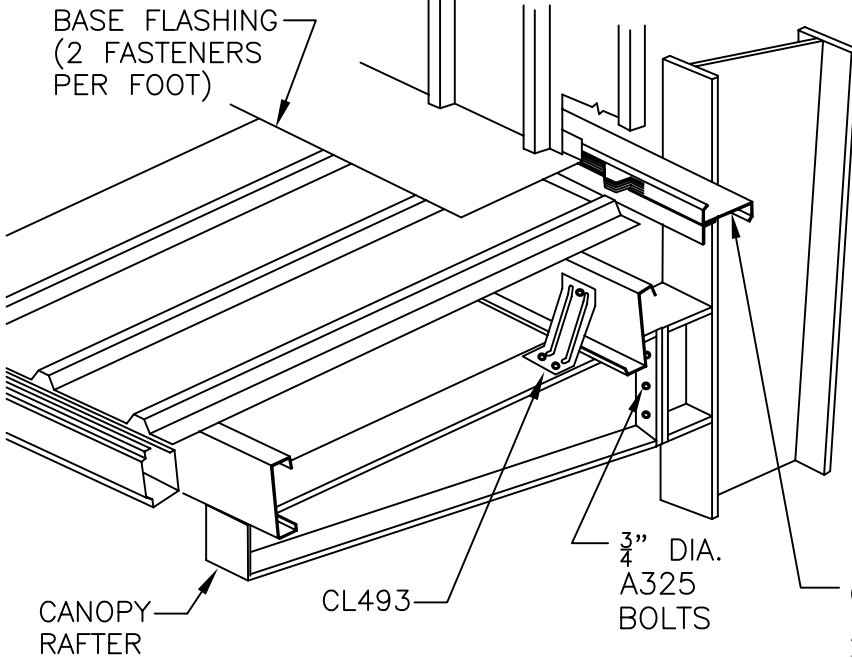
HIGH SIDE DETAIL

DETAIL AT WALL LINE

BELOW EAVE LINE EXPOSED CANOPY
RAFTER W/SHEETED WALL BELOW

SHT. NO.	FA11
DATE	REV.
MAR. 06	00

(RIBBED ROOF)



WALL PANEL CUT OUT
MAJOR RIB AS REQUIRED
TO RECEIVE RAFTER.
BOLT UP RAFTER AND
CAULK.

PREPARATION OF MAJOR
RIB FOR RAFTER

GIRT WITH $2\frac{5}{8}$ " X 4"
ANGLE (ATTACH ANGLE
TO GIRT WITH FASTENERS
ONE PER FOOT)

SELF-DRILLERS (SEE
MA030401/MA030501)
EAVE CLOSURE REQUIRED
WITH SEALED EAVE OR
CANOPY WITH SOFFIT

GUTTER CLIP
3'-0" O.C.

EAVE
GUTTER
(EG2-4)

EAVE FLASHING
(SF90, SF91)

TF10 OR TF11

STITCH FASTENERS
(3'-0" O.C.)

NOTE: 3 FASTENERS PER JOINT OF
DOWNSPOUTS. CAULK ALL JOINTS OF
HORIZONTAL DOWNSPOUTS.

EAVE DETAIL

ST FASTENERS
(2 PER FOOT)

BASE FLASHING
(BF76) STITCH
FASTENER (6"
ON CENTER)
SEE DETAIL
MA030701

ST FASTENER
(1'-0" O.C.)

INSIDE CLOSURE

ST FASTENERS
(ONE PER FOOT)

$2\frac{5}{8}$ " X 4"
ANGLE

$\frac{3}{4}$ " DIA. A325
BOLTS

TF10
OR TF11

TF72

CANOPY
RAFTER

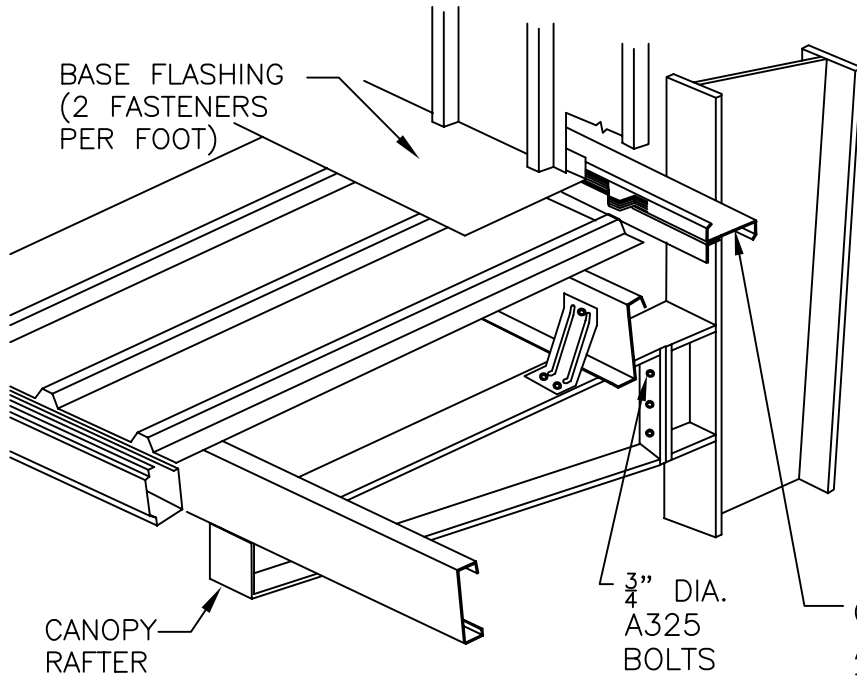
SOFFIT
PANELS

DETAIL AT WALL LINE

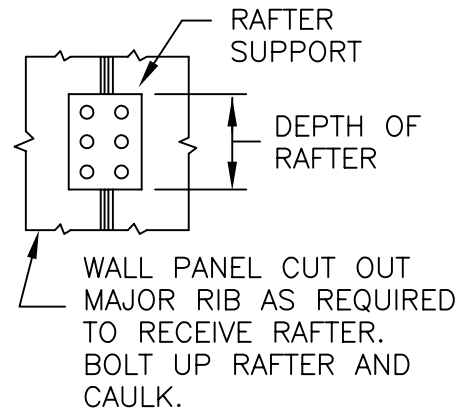
NOTE: ERECTOR TO FIELD "PITCH" ROOF SHEETS AT EAVE GUTTER

BELOW EAVE LINE EXPOSED CANOPY
 RAFTER AND OPEN BELOW
 (RIBBED ROOF)

SHT. NO. FA12	
DATE MAR. 06	REV. 00



PREPARATION OF MAJOR
 RIB FOR RAFTER



SELF-DRILLERS (SEE
 MA030401/MA030501)
 EAVE CLOSURE REQUIRED
 WITH SEALED EAVE OR
 CANOPY WITH SOFFIT

SELF-DRILLERS
 (2 PER FOOT)

INSIDE CLOSURE

SELF-DRILLERS
 (ONE PER FOOT)

BASE FLASHING
 (BF76) STITCH
 FASTENER (6" O.C.)
 SEE DETAIL
 MA030701

GUTTER CLIP
 3'-0" O.C.

EAVE
 GUTTER
 (EG2-4)

ST FASTENER
 (1'-0" O.C.)

CL493

TF10 OR TF11

EAVE FLASHING
 (SF90, SF91)

STITCH FASTENERS
 (3'-0" O.C.)

$\frac{3}{4}$ " DIA. A325
 BOLTS

TF10 OR TF11

STITCH FASTENERS
 (3'-0" O.C.)

CANOPY
 RAFTER

SOFFIT
 PANELS

NOTE: 3 FASTENERS PER JOINT OF
 DOWNSPOUTS. CAULK ALL JOINTS OF
 HORIZONTAL DOWNSPOUTS.

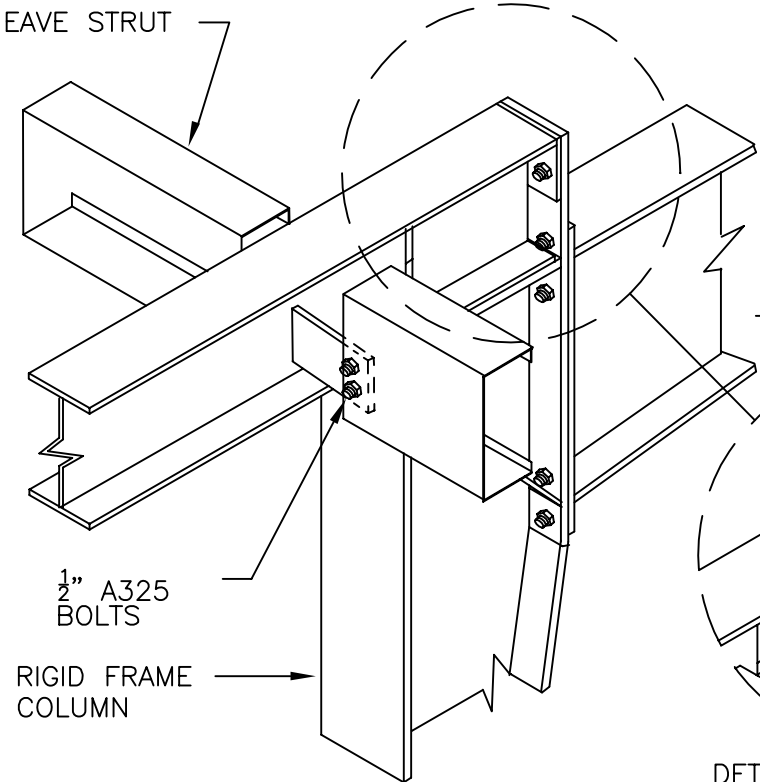
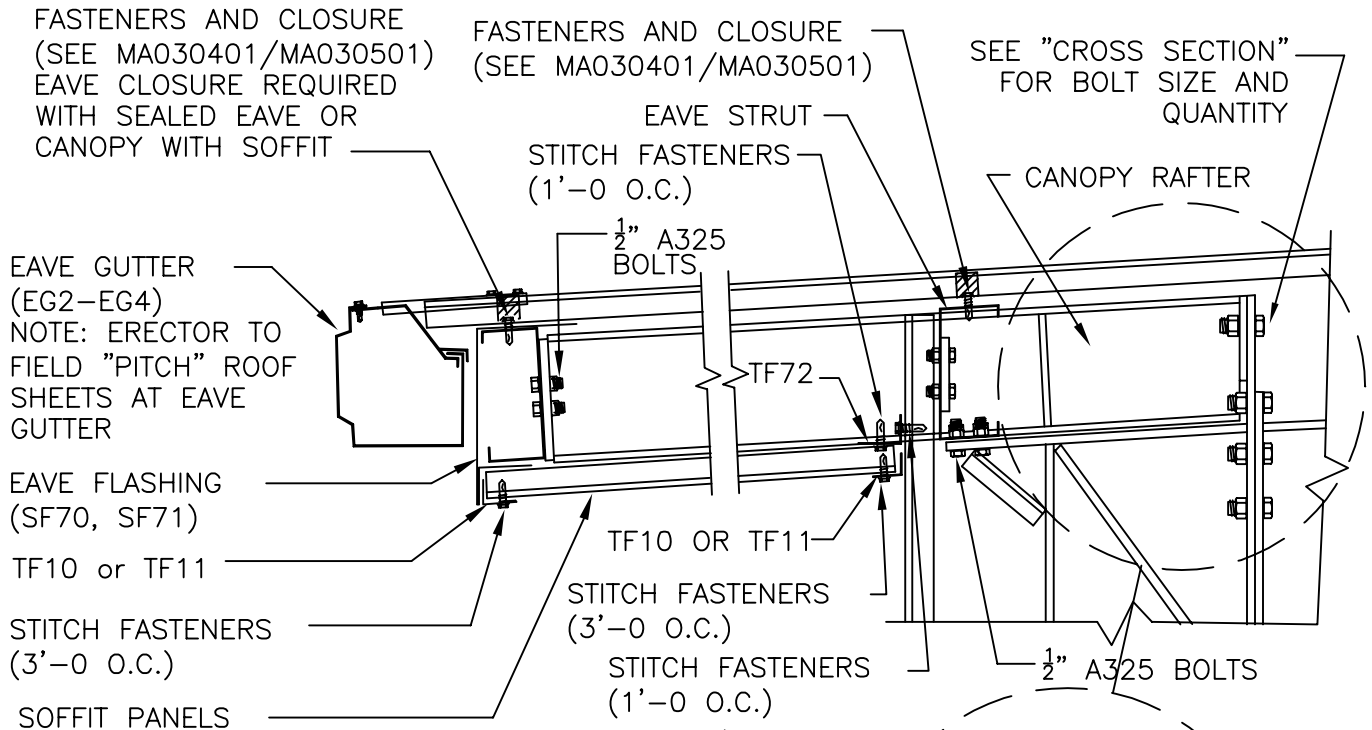
DETAIL AT WALL LINE

EAVE DETAIL

NOTE: ERECTOR TO FIELD "PITCH" ROOF SHEETS AT EAVE GUTTER

EAVE LINE FLUSH CANOPY RAFTER
 AT SHEETED WALL
 (RIBBED ROOF)

SHT. NO. FA13	
DATE Dec. 09	REV. 01

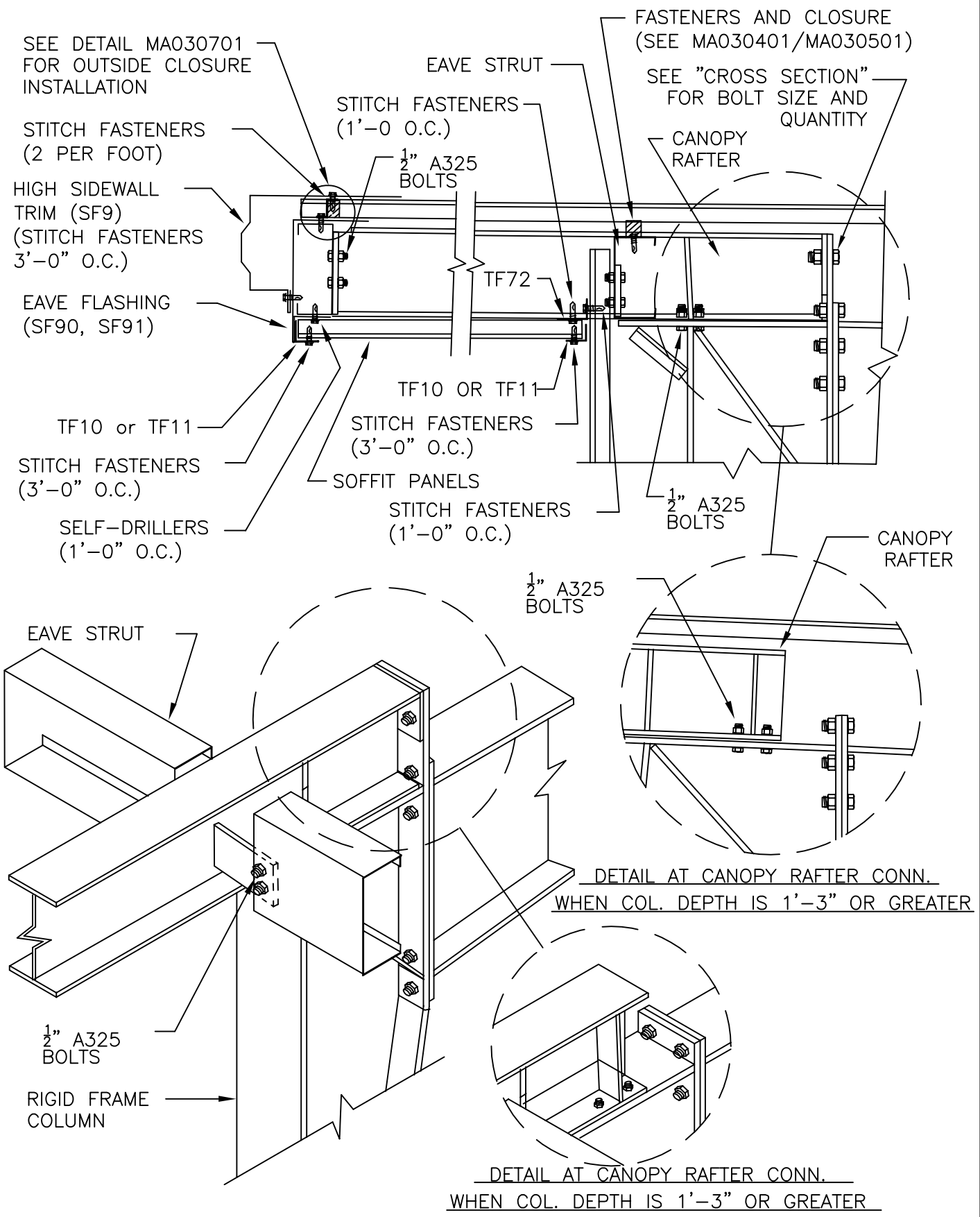


DETAIL AT CANOPY RAFTER CONN.
WHEN COL. DEPTH IS 1'-3" OR GREATER

DETAIL AT CANOPY RAFTER CONN.
WHEN COL. DEPTH IS 1'-3" OR GREATER

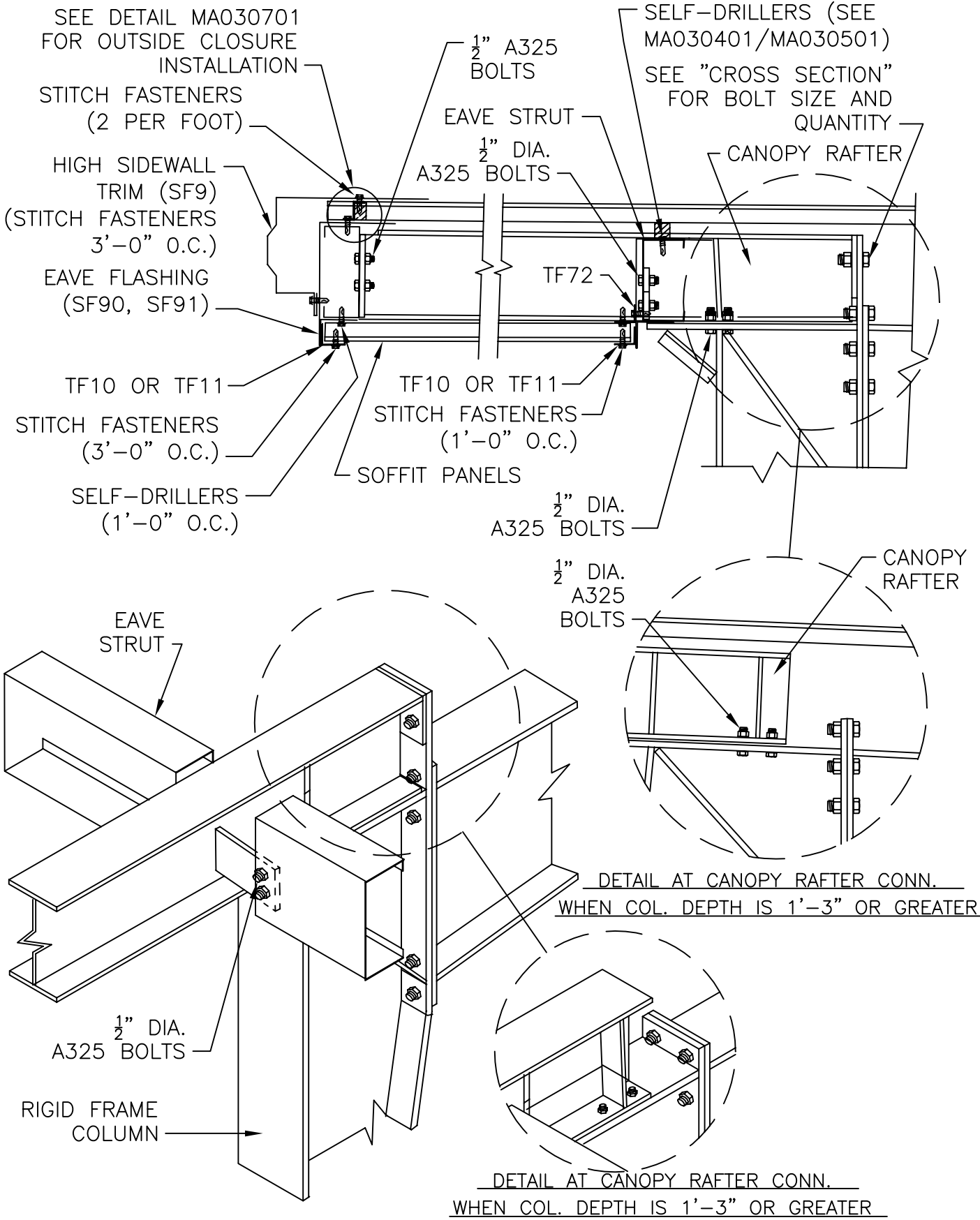
HIGH SIDE EAVE LINE FLUSH CANOPY
 RAFTER AT SHEETED WALL
 (RIBBED ROOF)

SHT. NO. FA15	
DATE Dec. 09	REV. 01



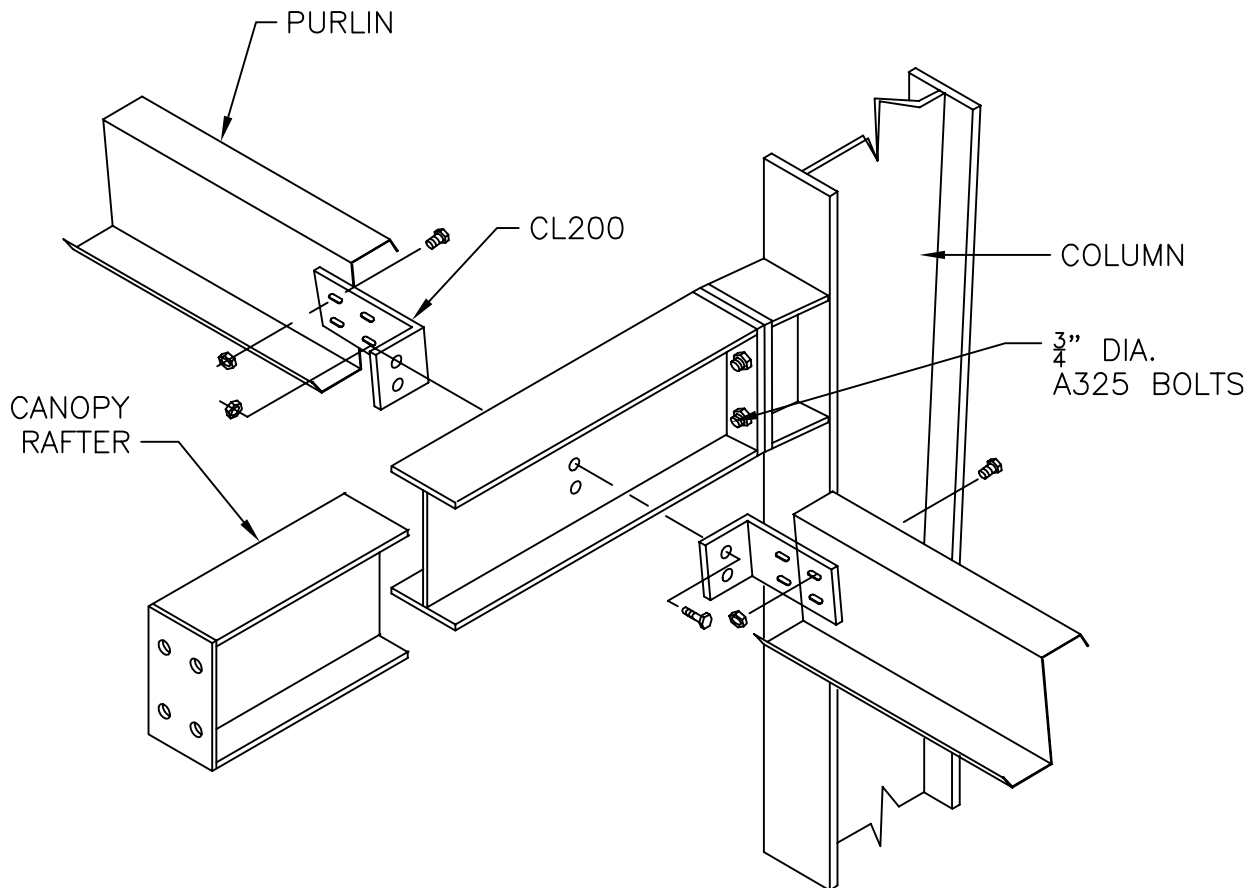
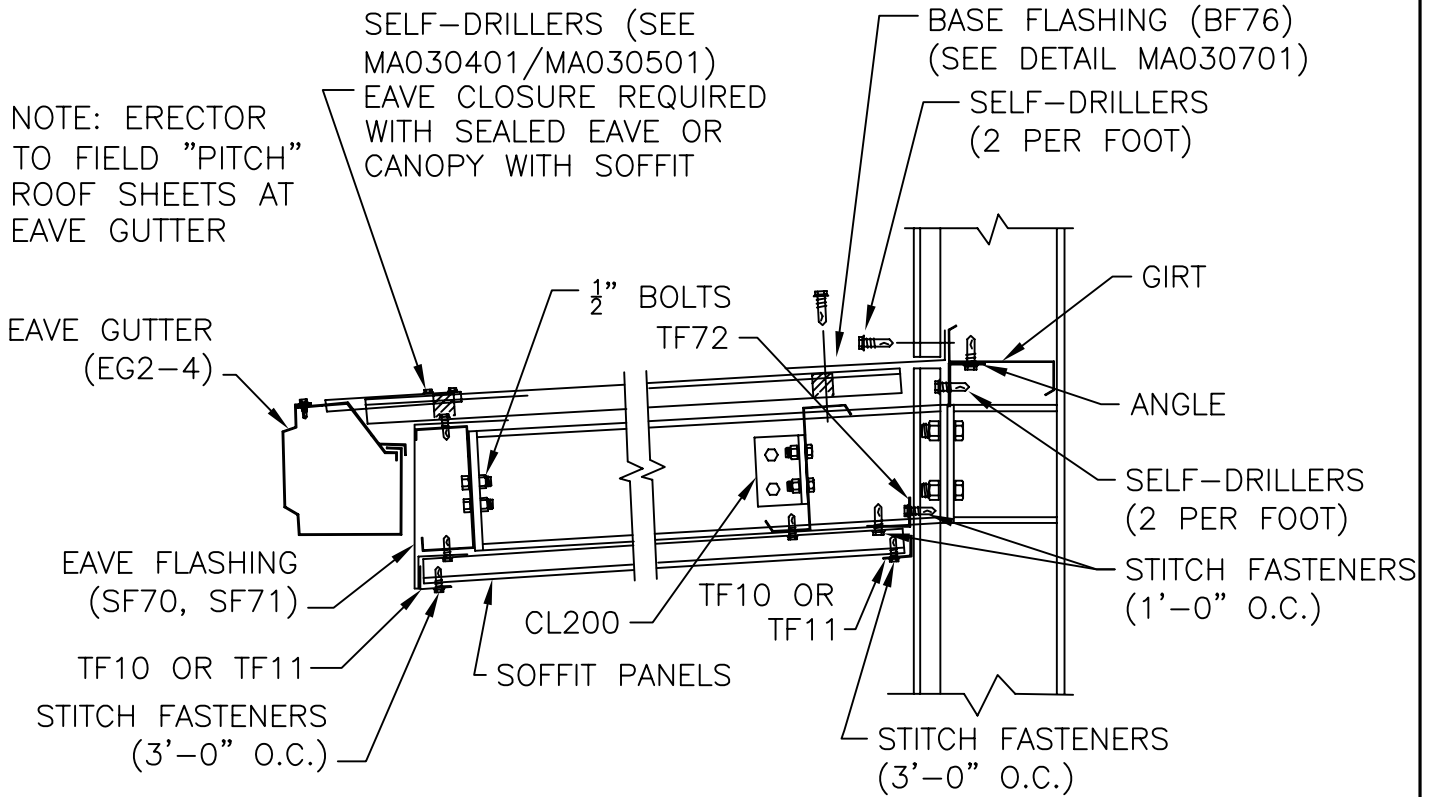
HIGH SIDE EAVE LINE FLUSH
CANOPY RAFTER AT OPEN WALL
(RIBBED ROOF)

SHT. NO. FA16	
DATE Dec. 09	REV. 01



BELOW EAVE LINE
 FLUSH CANOPY RAFTER AT SHEETED WALL
 (RIBBED ROOF)

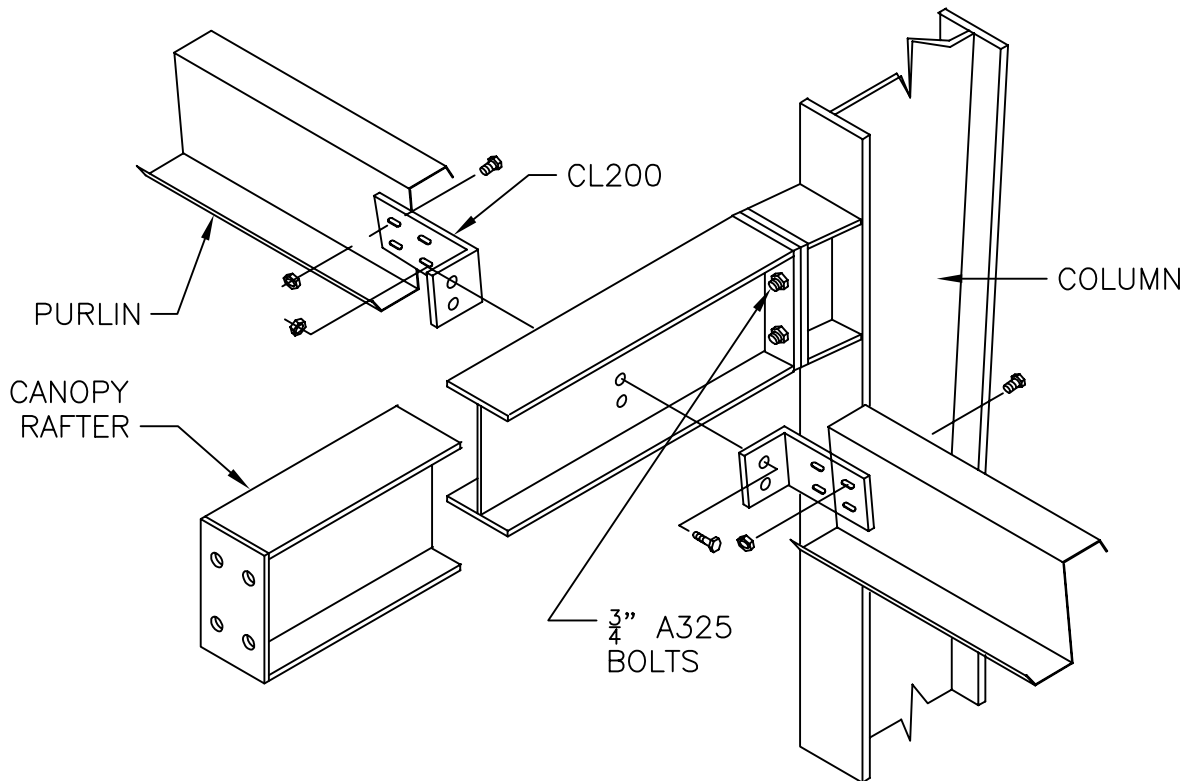
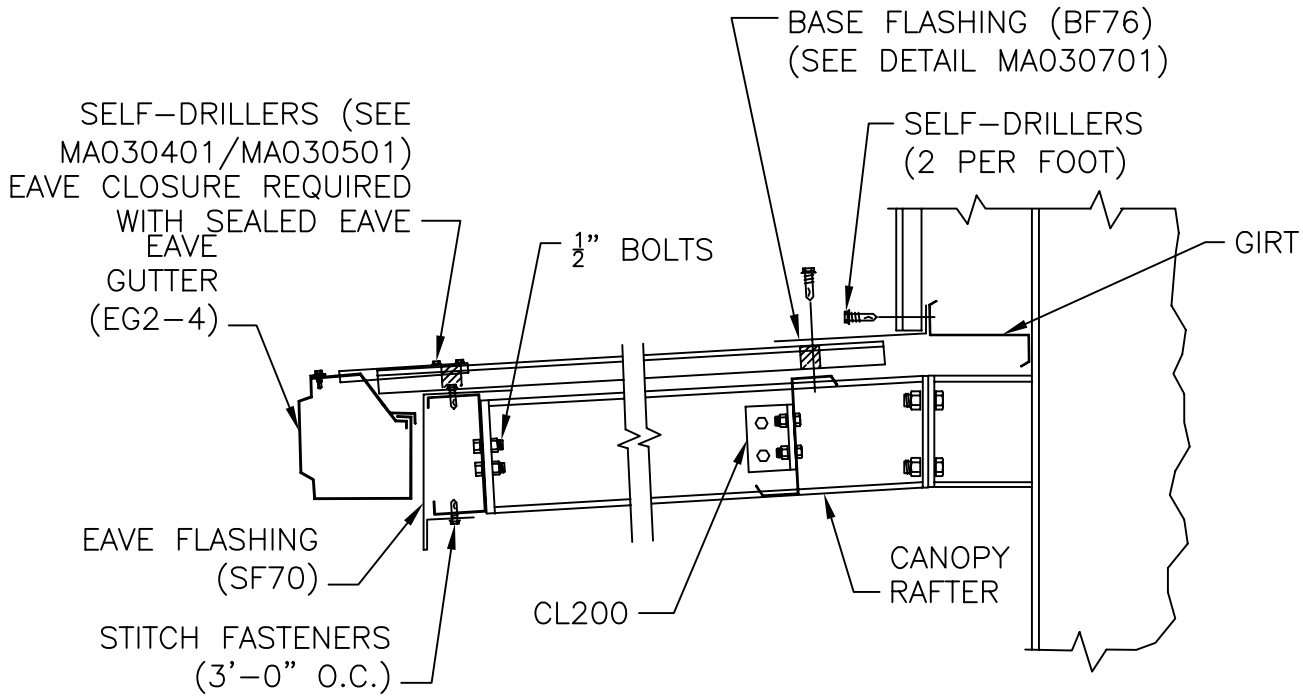
SHT. NO. FA17	
DATE MAR. 06	REV. 00



BELOW EAVE LINE
FLUSH CANOPY RAFTER AT OPEN WALL
(RIBBED ROOF)

SHT. NO. FA18	
DATE MAR. 06	REV. 00

NOTE: ERECTOR TO FIELD
"PITCH" ROOF SHEETS AT
EAVE GUTTER



PURLIN SUPPORT CHANNEL DETAIL

SHT. NO.
FA35

DATE
MAR. 06

REV.
00

