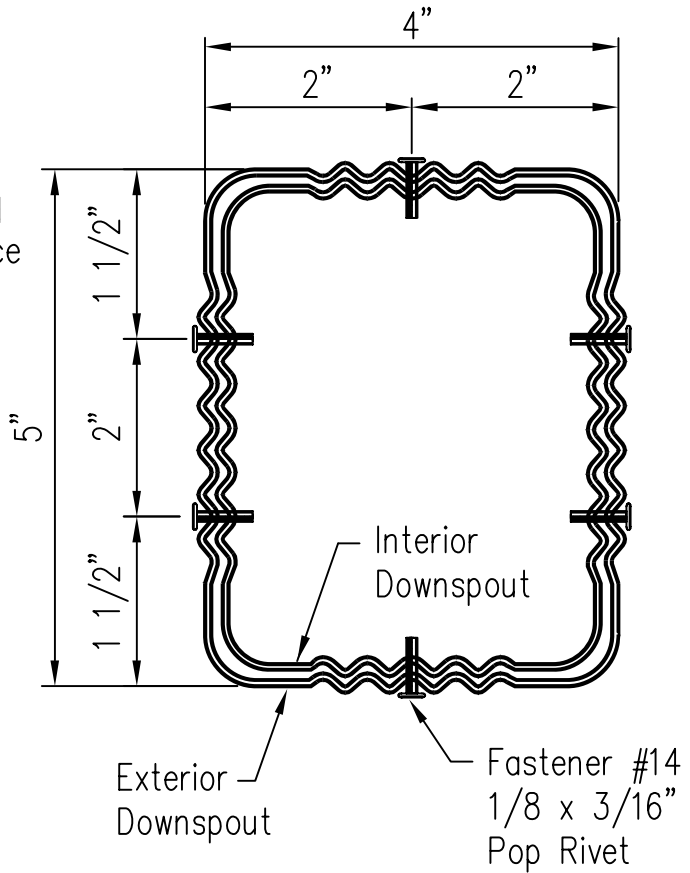
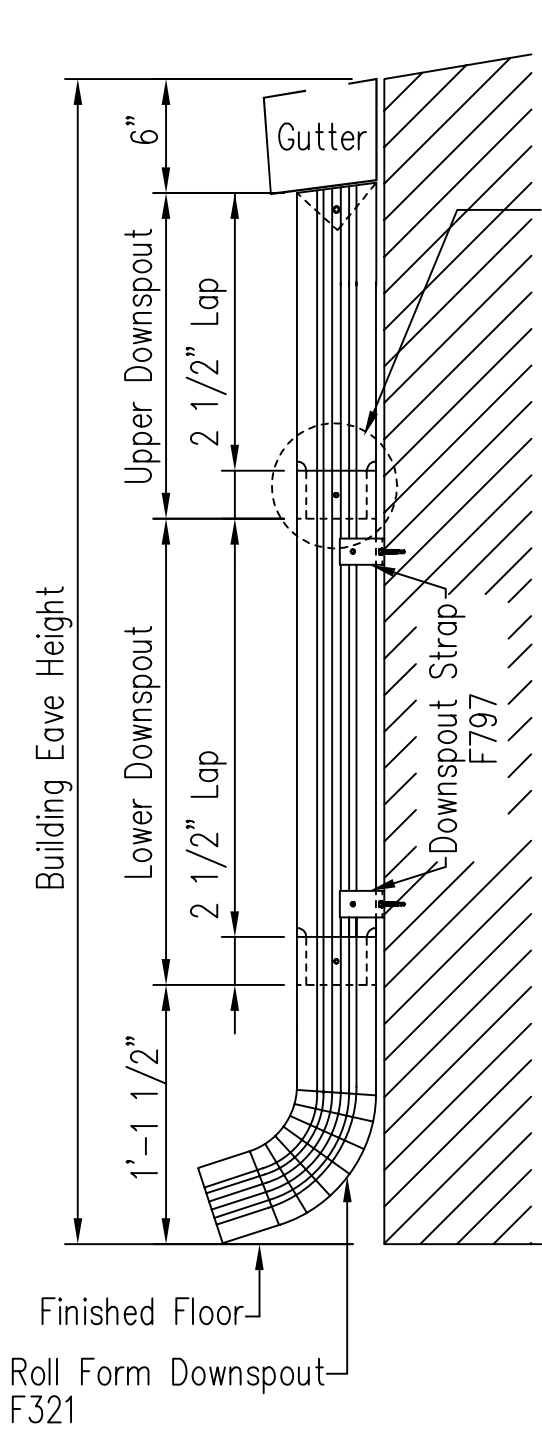


"NCI/MBCI"
"Roll Form" Downspout

SHT. NO. DP01001	
DATE MAR 10	REV. 01



Field Splice

A field splice is required for eave heights greater than 16'-0". Use the chart to field cut a 10'-6" or 14'-6" length of downspout. Always measure the required length starting at the swaged end. After cutting to length, insert the swaged end of the cut downspout into the top of the lower downspout. Secure with pop rivets.

F320 = 10'-6"

F313 = 14'-6"

"NCI/MBCI" "Roll Form"
Downspout Schedule

SHT. NO.
DP01002

DATE
MAR 10

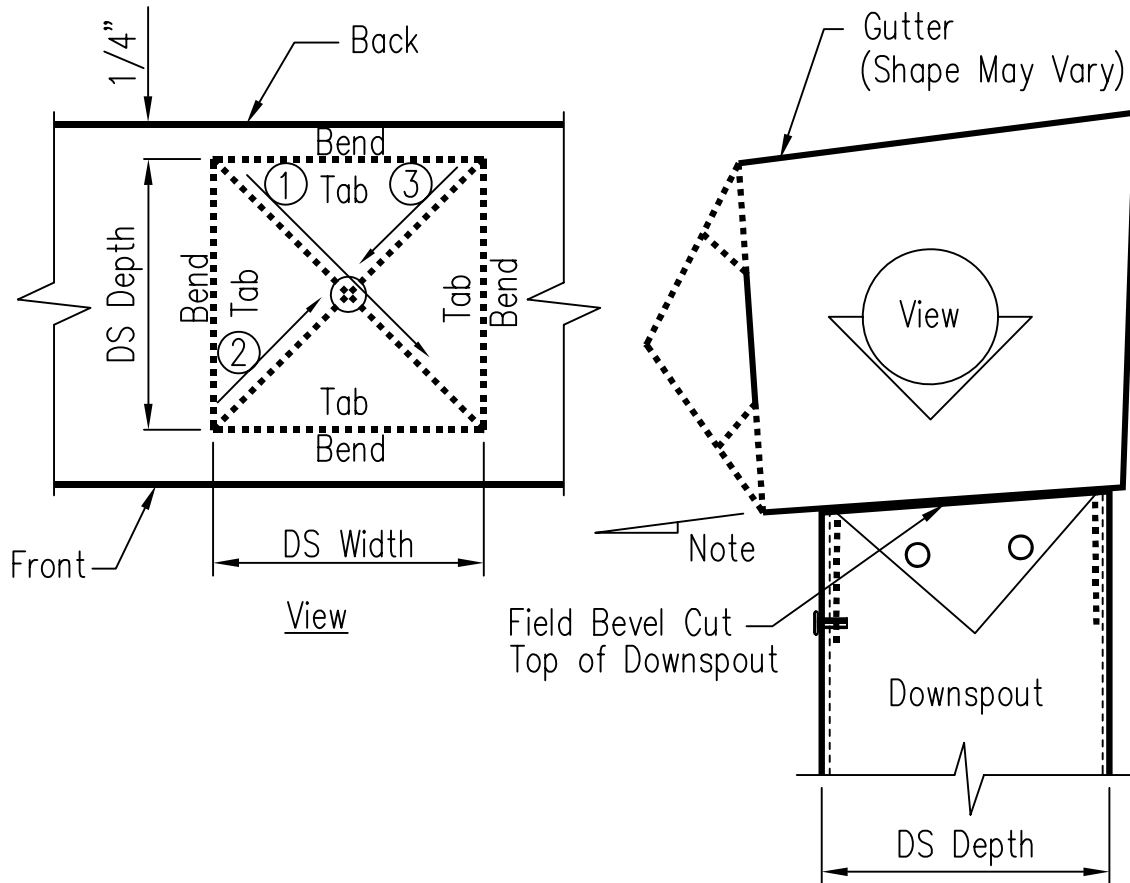
REV.
01

Eave HT (feet)	10'-6" F320	14'-6" F313	Straps F797
8	1		2
9	1		2
10	1		2
11	1		3
12		1	3
13		1	3
14		1	3
15		1	3
16	2		3
17	2		3
18	2		3
19	2		3
20	2		3
21	1	1	4
22	1	1	4
23	1	1	4
24	1	1	4
25	1	1	4
26		2	4
27		2	4
28		2	4
29		2	4
30	3		4
31	3		5
32	3		5
33	2	1	5
34	2	1	5

Eave HT (feet)	10'-6" F320	14'-6" F313	Straps F797
35	2	1	5
36	2	1	5
37		3	5
38		3	5
39		3	5
40		3	5
41	4		6
42	4		6
43	3	1	6
44	3	1	6
45	3	1	6
46	3	1	6
47	2	2	6
48	2	2	6
49	1	3	6
50	1	3	6
51	1	3	7
52	1	3	7
53	1	3	7
54	1	3	7
55	4	1	7
56	4	1	7
57	4	1	7
58	3	2	7
59	3	2	7
60	3	2	7

"Roll Form"
Gutter to Downspout

SHT. NO. DP01003	
DATE May 09	REV. 00



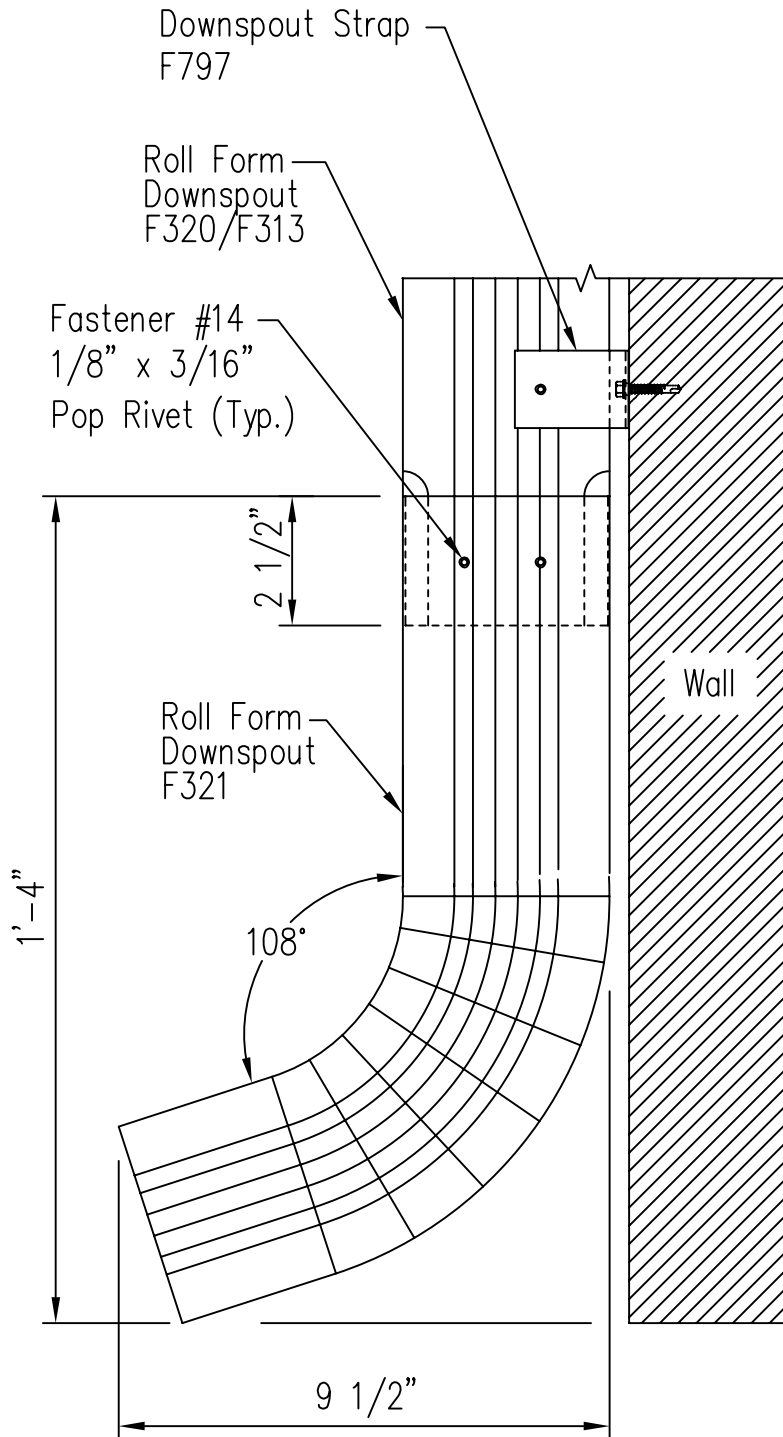
1. Refer to the building erection drawings for the location and spacing of the downspouts.
2. Locate all downspouts over a major panel rib if possible.
3. Make a cardboard template of the downspout shape. Place the template on the bottom of the gutter and trace the outline. Remove the template and draw a line from corner to corner, forming an "x" pattern.
4. Drill a whole at the center of the "x". Using tin snips, cut along the lines of the x only. Do not cut along the outside lines of the downspout square.
5. Bend each triangular tab down toward the ground, 90 Degrees to the bottom of the gutter.
6. Position the top of the downspout under the gutter. Make sure all four gutter tabs are on the inside of the downspout.
7. Install Fastener #14 through the downspout into the gutter tab. Only the two sides and the front of the downspout will receive fasteners.

"NCI/MBCI" "Roll Form"
Downspout Kickout

SHT. NO.
DP01004

DATE
MAR 10

REV.
01

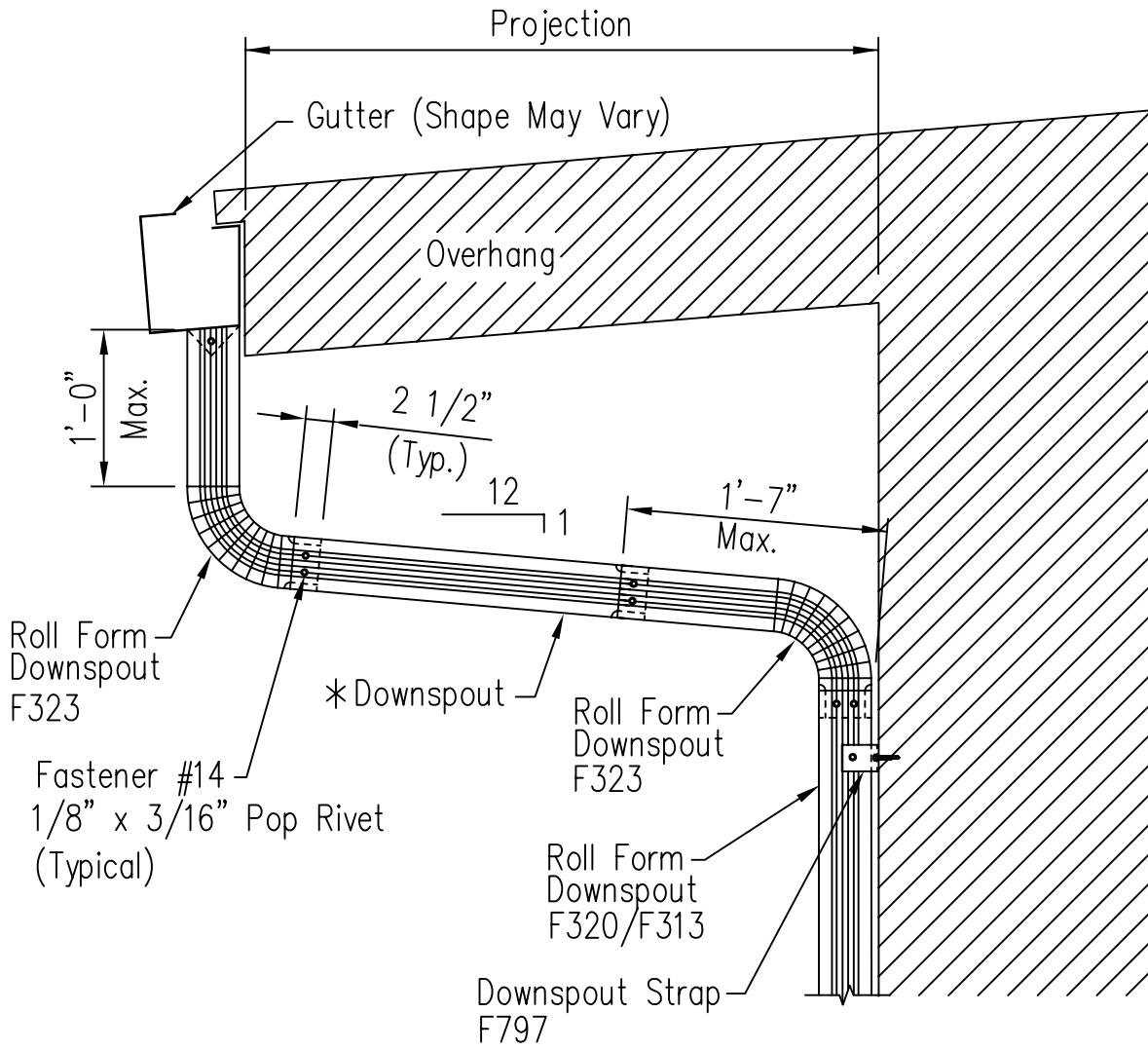


"NCI/MBCI" "Roll Form"
Eave Canopy Downspout

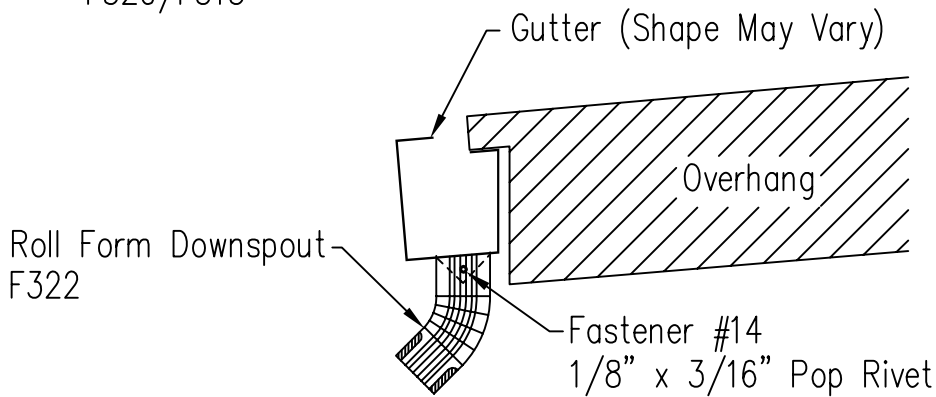
SHT. NO.
DP01005

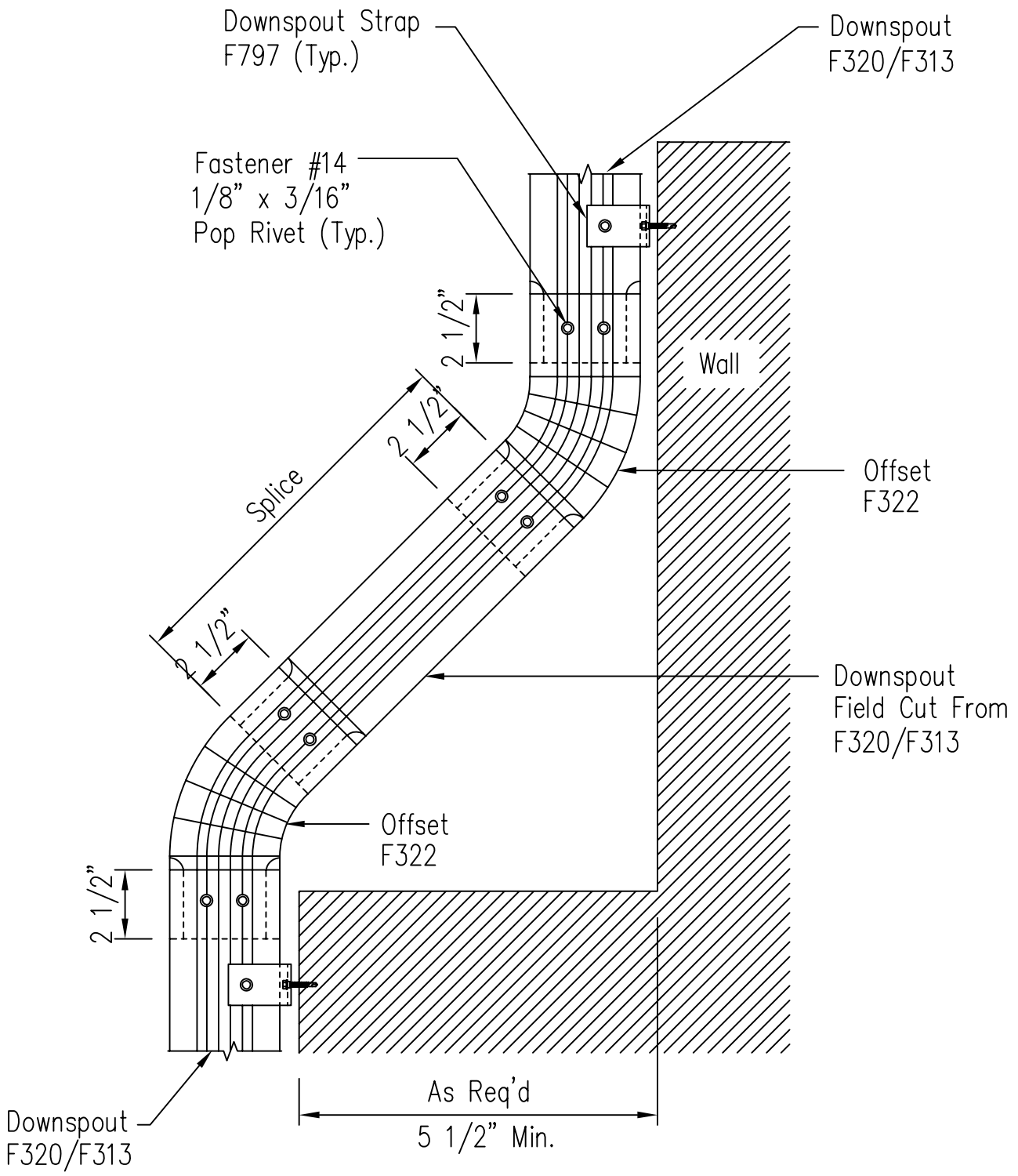
DATE
MAR 10

REV.
01



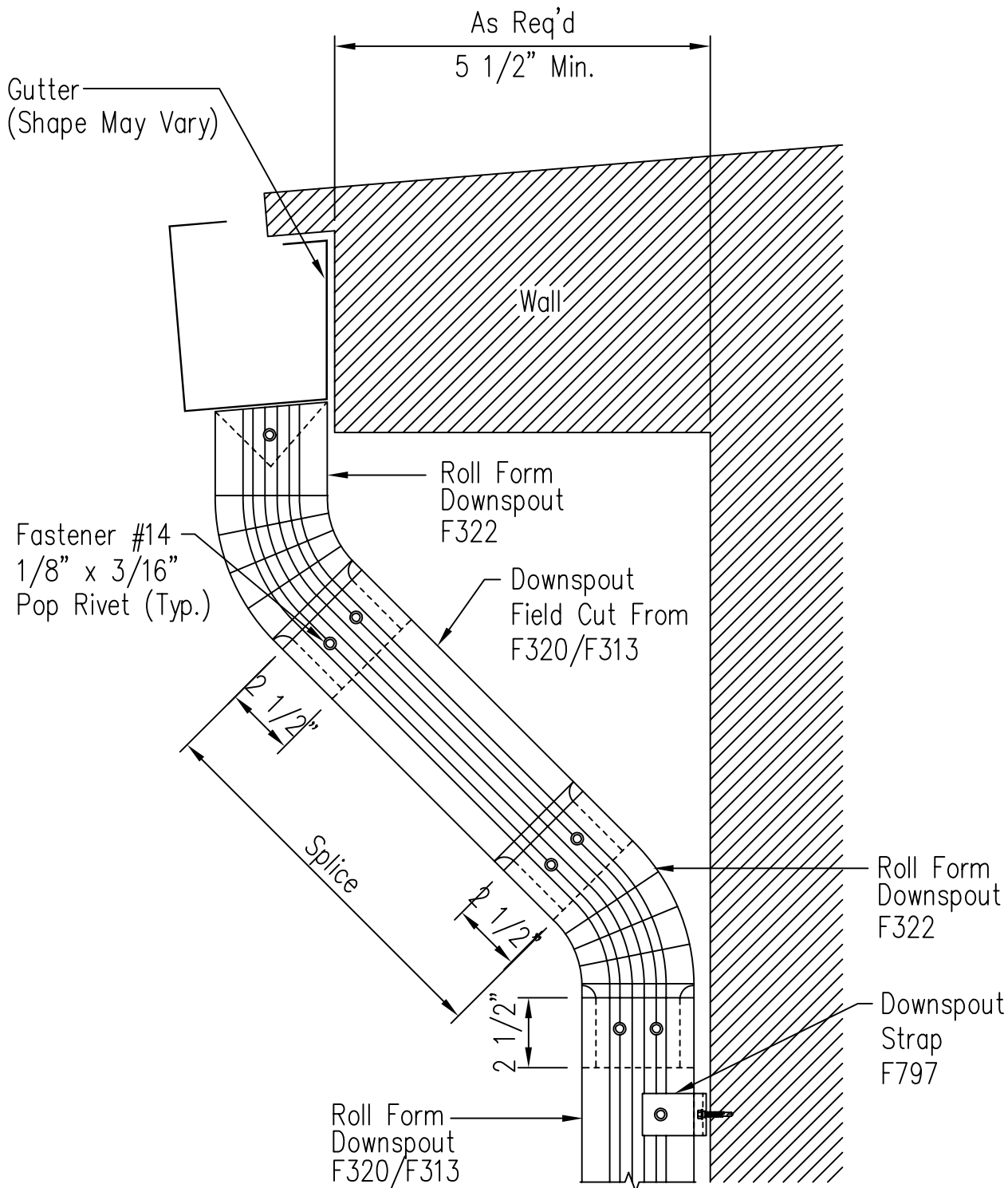
* Field Cut From
F320/F313





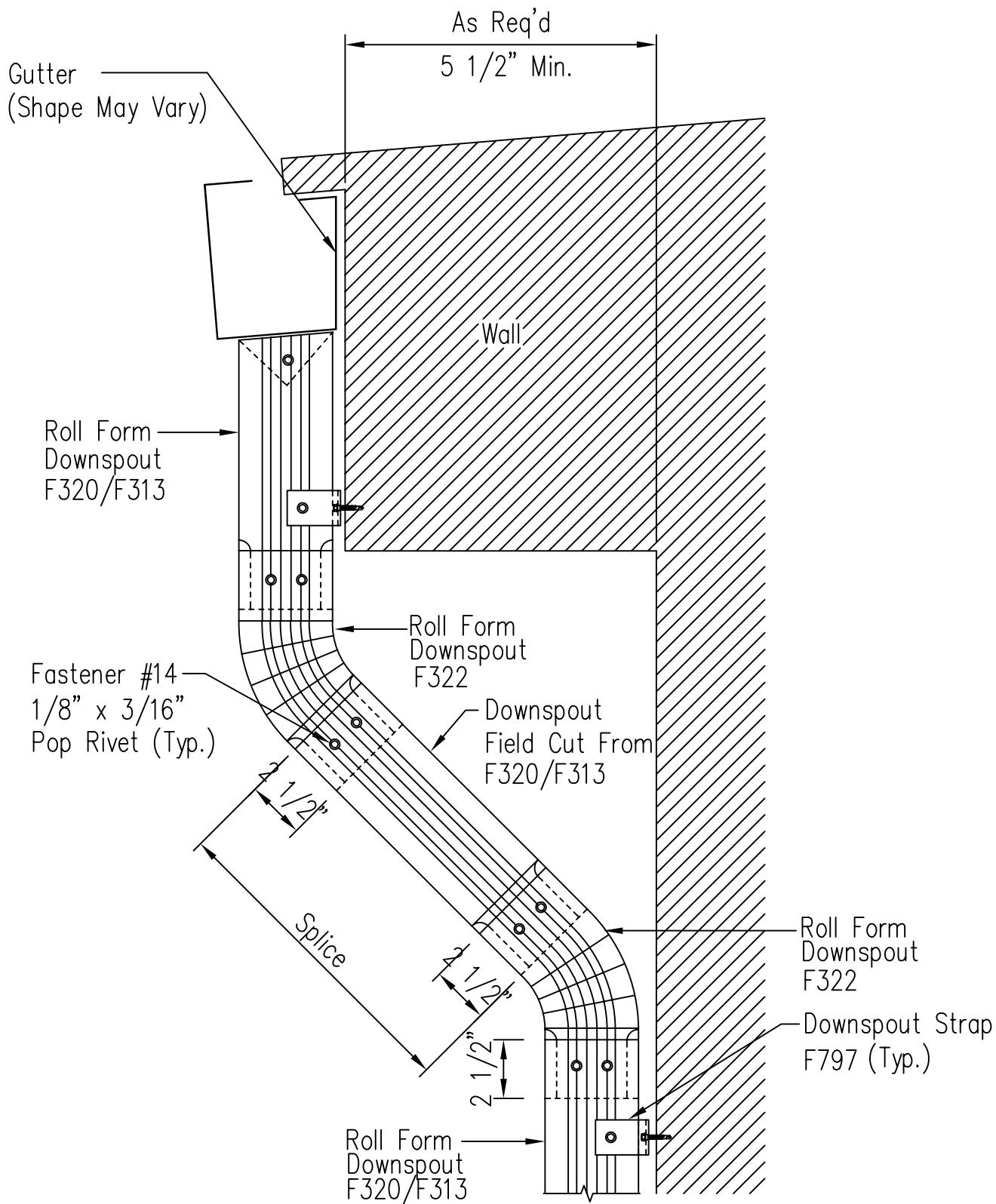
"NCI/MBCI" "Roll Form"
Full Height Open Wall

SHT. NO. DP01007	
DATE MAR 10	REV. 01



"NCI/MBCI" "Roll Form"
Partially Open Wall

SHT. NO. DP01008	
DATE MAR 10	REV. 01

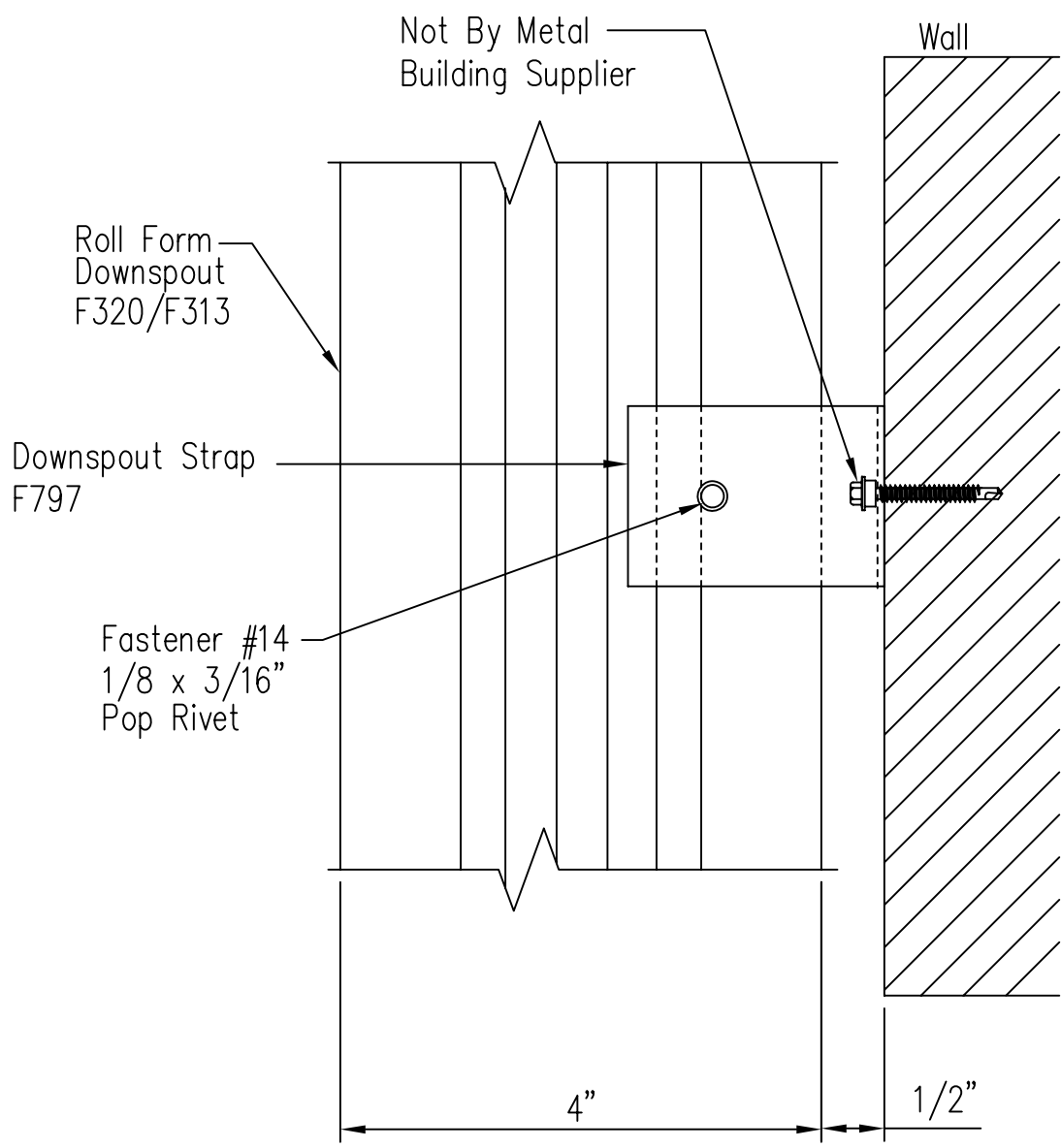


"NCI/MBCI" "Roll Form"
Downspout Strap Attachment

SHT. NO.
DP01009

DATE
MAR 10

REV.
01

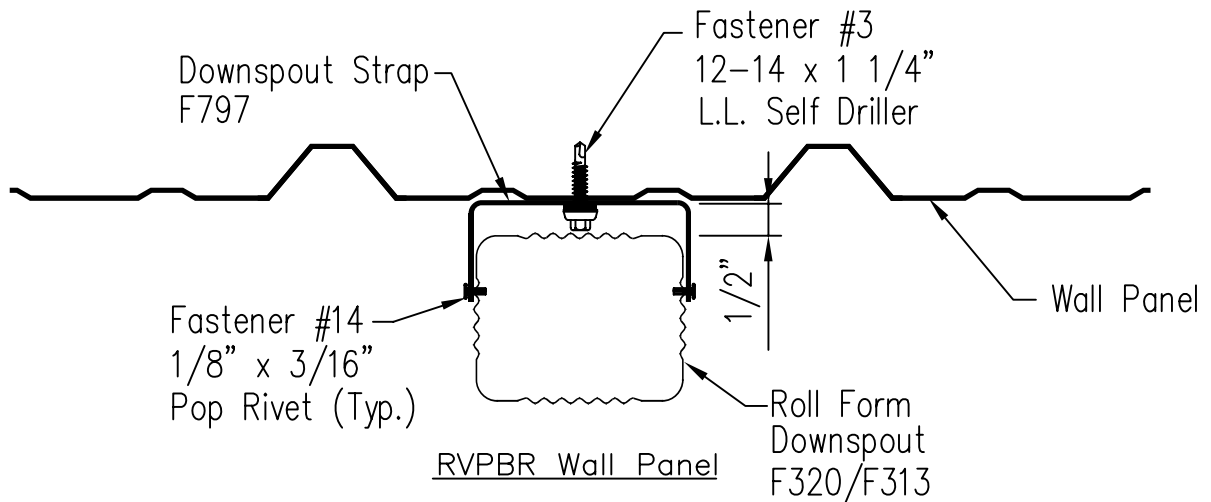
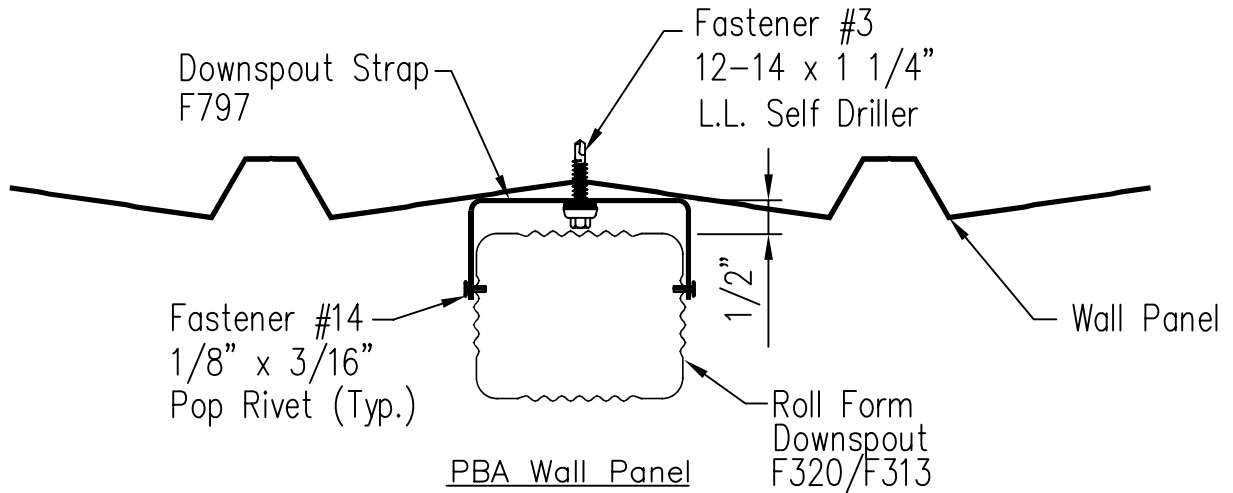
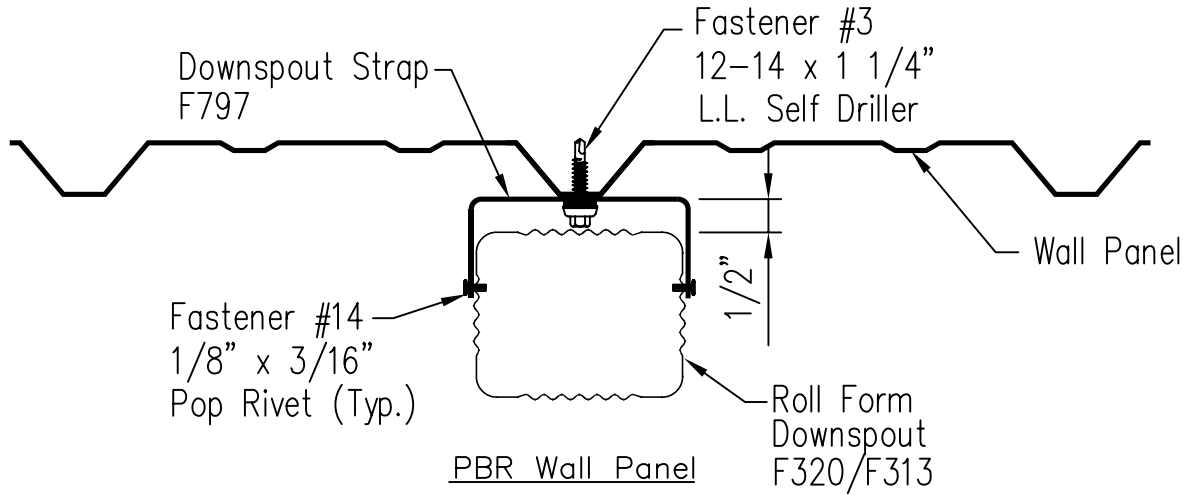


"NCI/MBCI" "Roll Form"
Strap Attachment to Wall Panel

SHT. NO.
DP01010

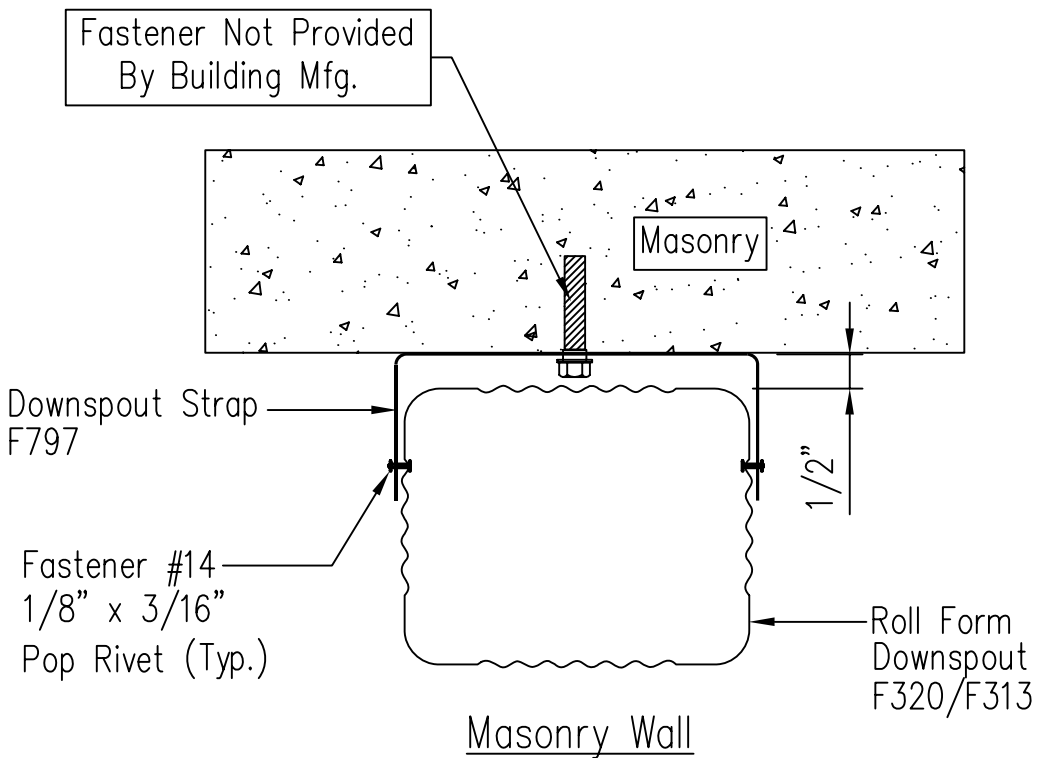
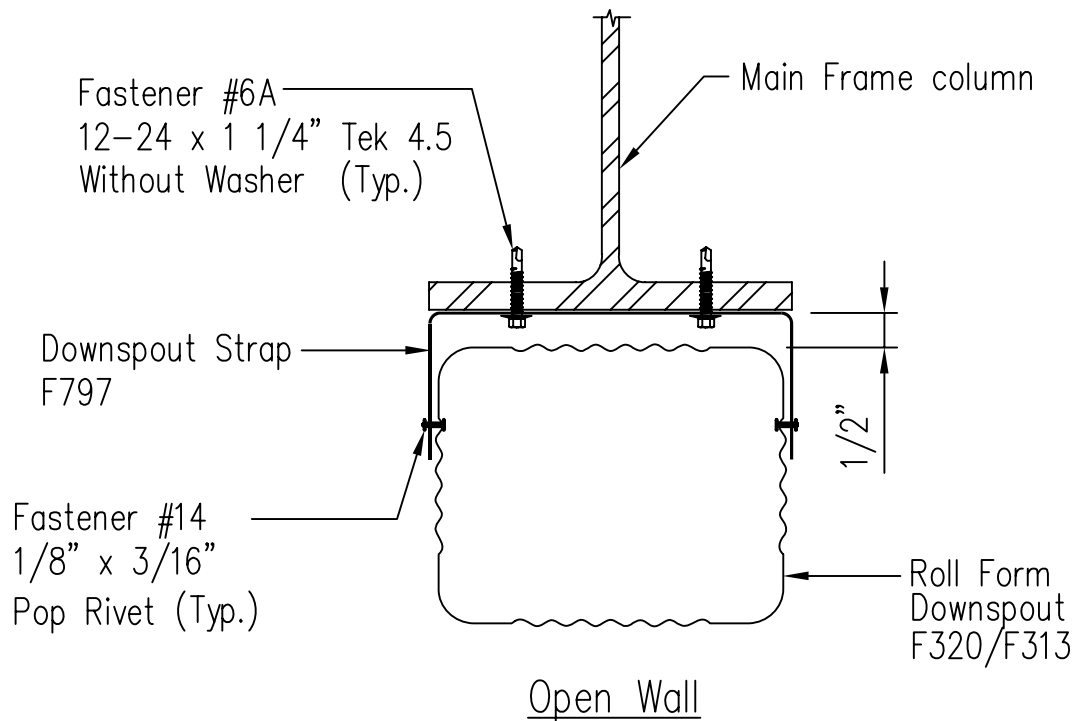
DATE
MAR 10

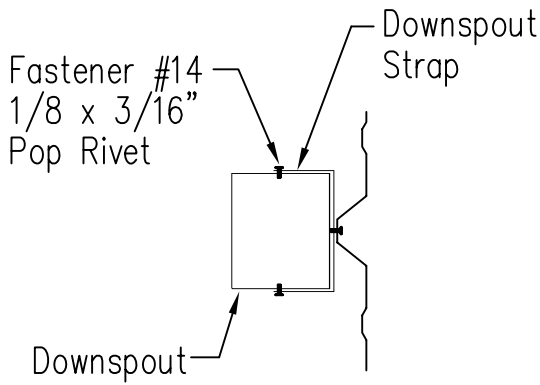
REV.
01



"NCI/MBCI" "Roll Form"
Strap Attachment

SHT. NO.	DP01011	
DATE	MAR 10	REV. 01



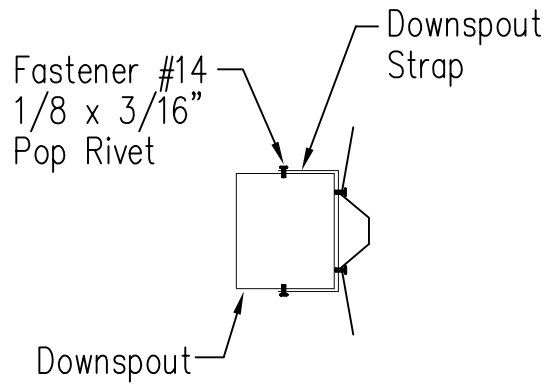


Fastener #14
1/8 x 3/16"
Pop Rivet

Downspout
Strap

Downspout

"PBR" Panel



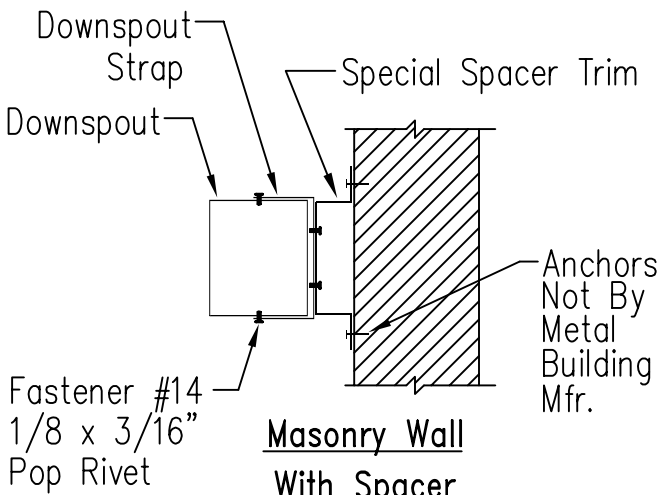
Fastener #14
1/8 x 3/16"
Pop Rivet

Downspout
Strap

Downspout

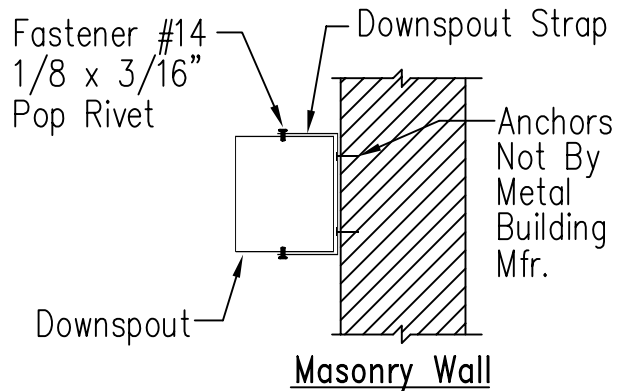
"PBA" Panel

Downspout Strap Spacing
10'-0" O.C. Maximum



Fastener #14
1/8 x 3/16"
Pop Rivet

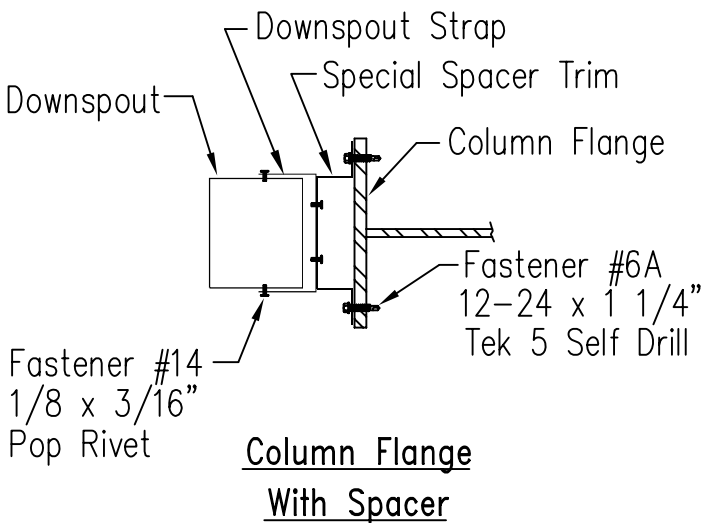
Masonry Wall
With Spacer



Fastener #14
1/8 x 3/16"
Pop Rivet

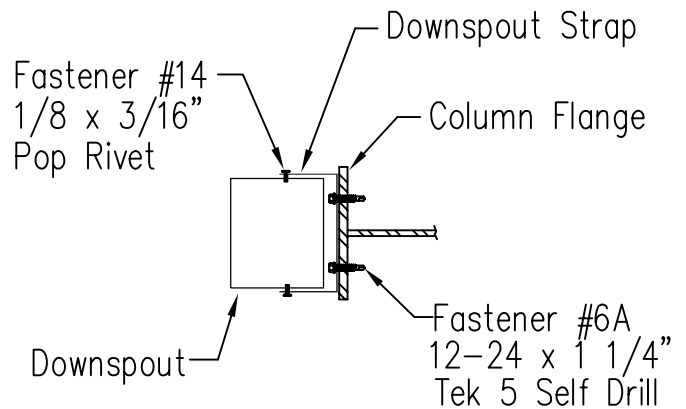
Anchors
Not By
Metal
Building
Mfr.

Masonry Wall



Fastener #14
1/8 x 3/16"
Pop Rivet

Column Flange
With Spacer



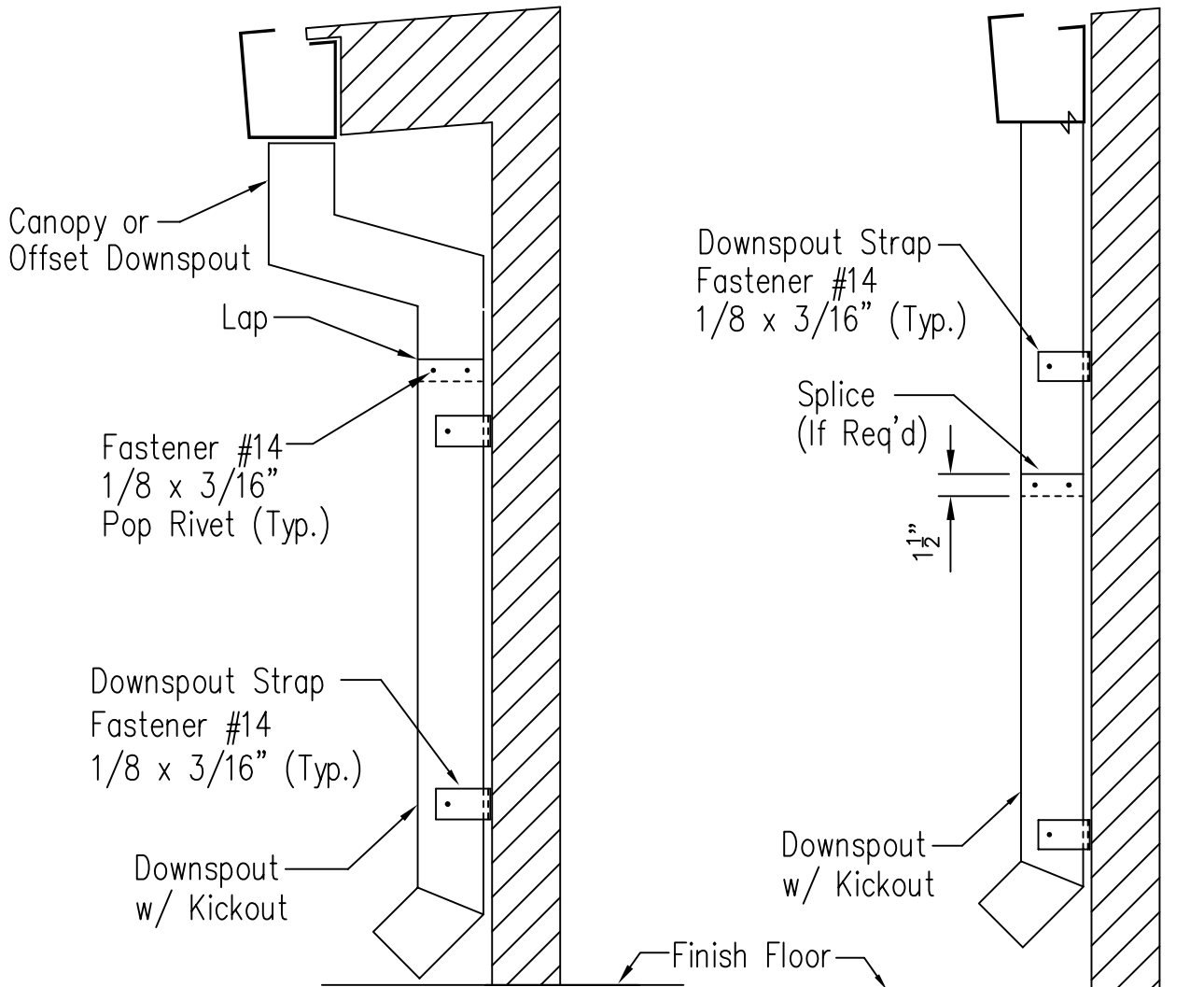
Fastener #14
1/8 x 3/16"
Pop Rivet

Fastener #6A
12-24 x 1 1/4"
Tek 5 Self Drill

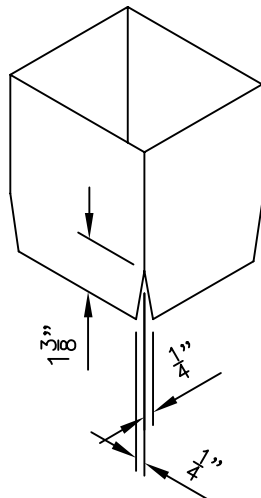
Column Flange

"NCI/MBCI" "Press Break"
Downspout

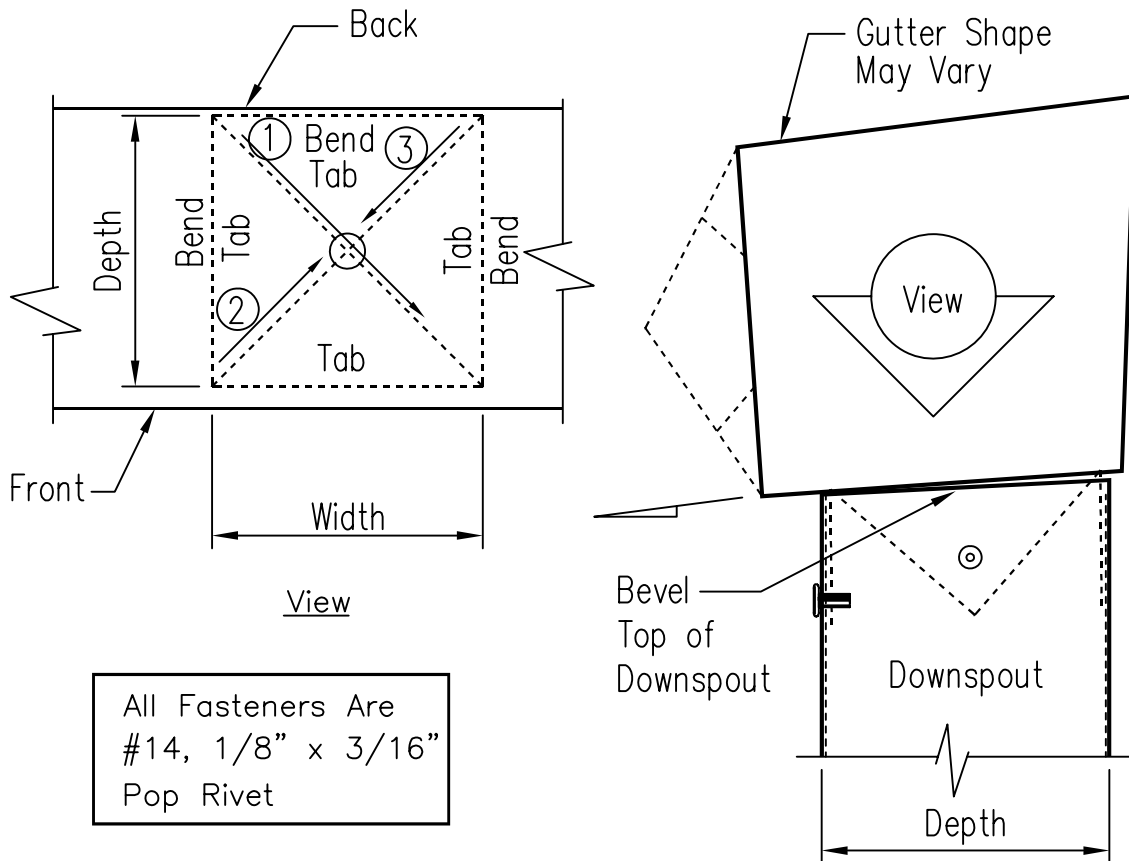
SHT. NO. DP01021	
DATE MAR 10	REV. 01



Downspout At Eave



Downspout Notch
for Lap/Splice



1. Refer to the building erection drawings for the location and spacing of the downspouts.
2. Locate all downspouts over a major panel rib if possible.
3. Make a cardboard template of the downspout shape. Place the template on the bottom of the gutter and trace the outline. Remove the template and draw a line from corner to corner, forming an "x" pattern.
4. Drill a hole at the center of the "x". Using tin snips, cut along the lines of the x only. Do not cut along the outside lines of the downspout square.
5. Bend each triangular tab down toward the ground, 90 Degrees to the bottom of the gutter.
6. Position the top of the downspout under the gutter. Make sure all four gutter tabs are on the inside of the downspout.
7. Install Fastener #14, 1/8" x 3/16" Pop Rivet through the downspout into the gutter tab. Only the two sides and the front of the downspout will receive fasteners.

"NCI/MBCI" "Press Break"
Eave Canopy Downspout

SHT. NO.
DP01023

DATE
MAR 10

REV.
01

