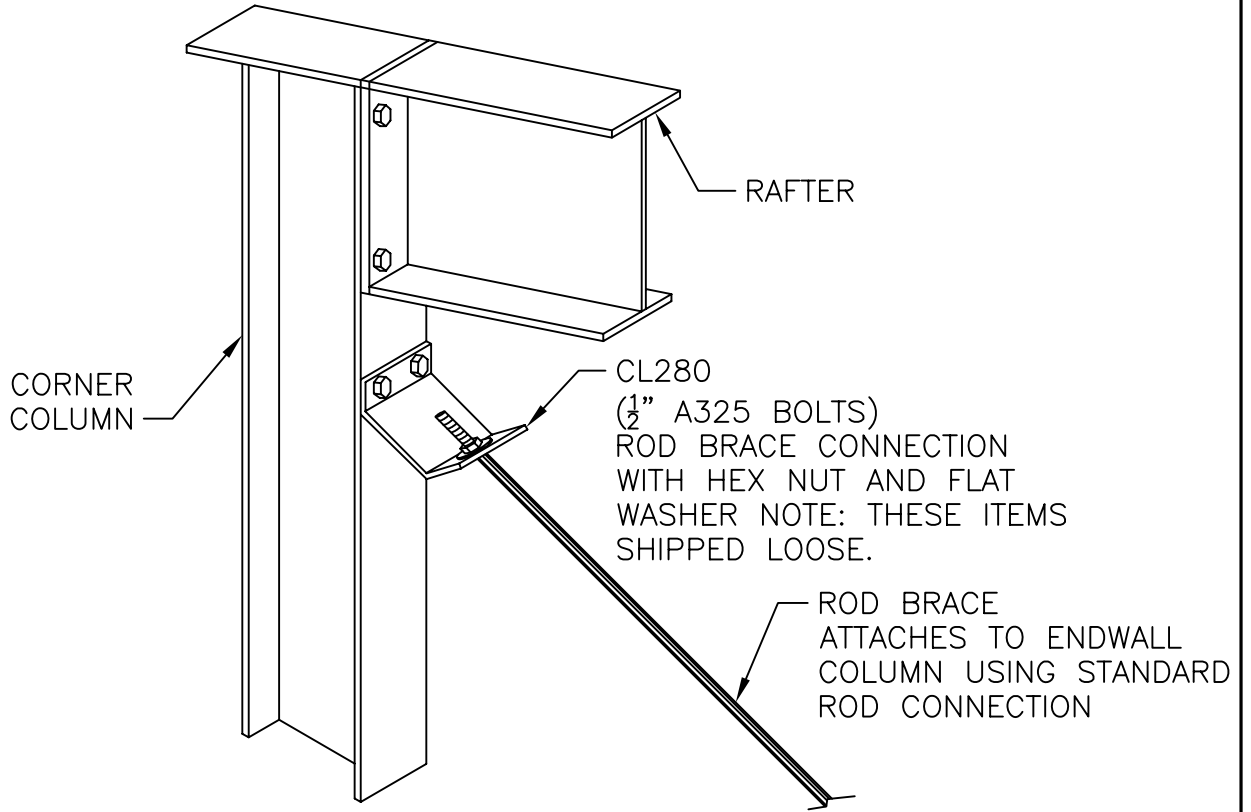


END FRAME DETAIL
BEARING END FRAME ROD ATTACHMENT

SHT. NO. EF01001	
DATE MAR. 06	REV. 00

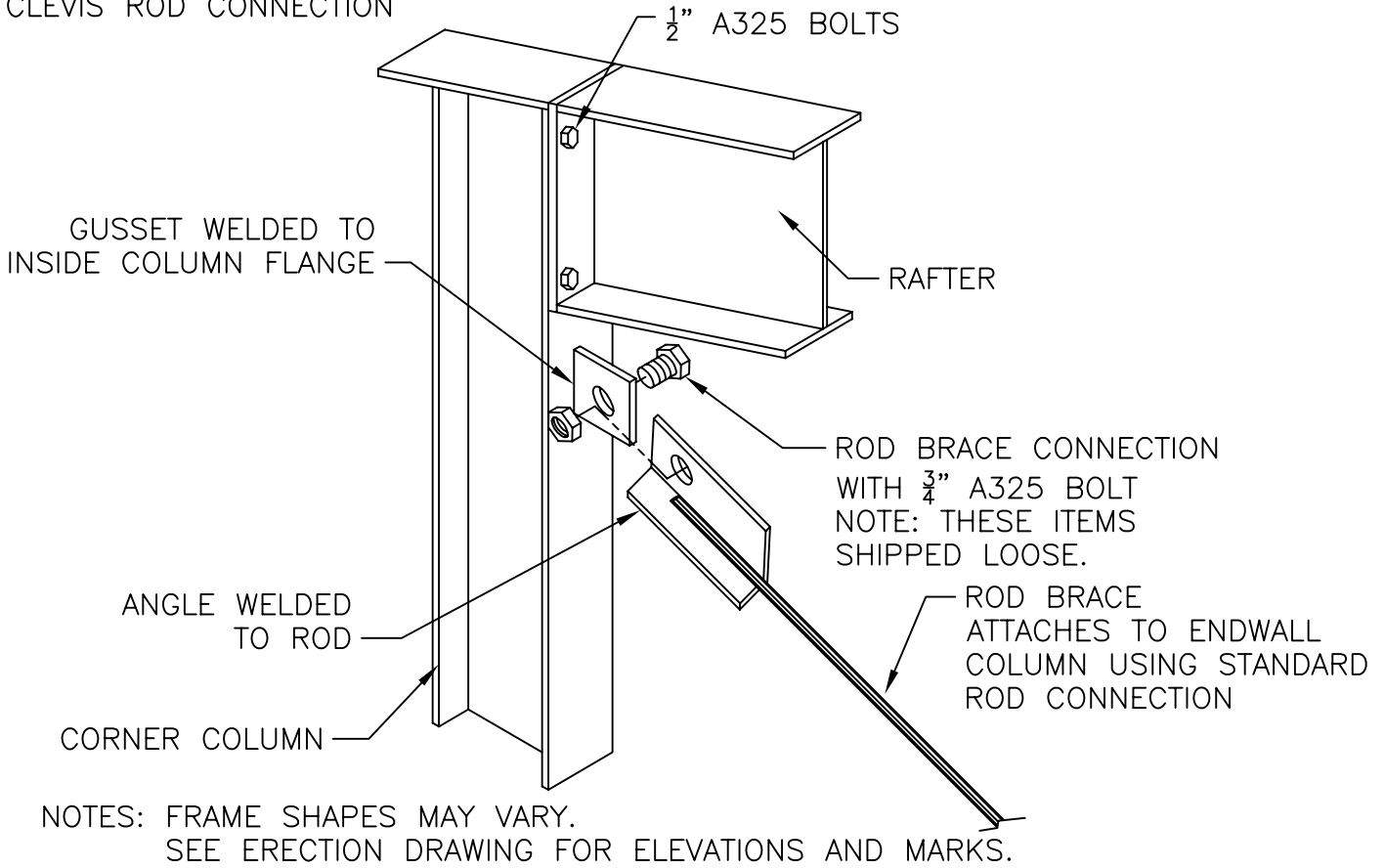


NOTES: FRAME SHAPES MAY VARY.
SEE ERECTION DRAWING FOR ELEVATIONS AND MARKS.

END FRAME DETAIL
BEARING END FRAME ROD ATTACHMENT

SHT. NO. EF01003	
DATE FEB. 03	REV. 00

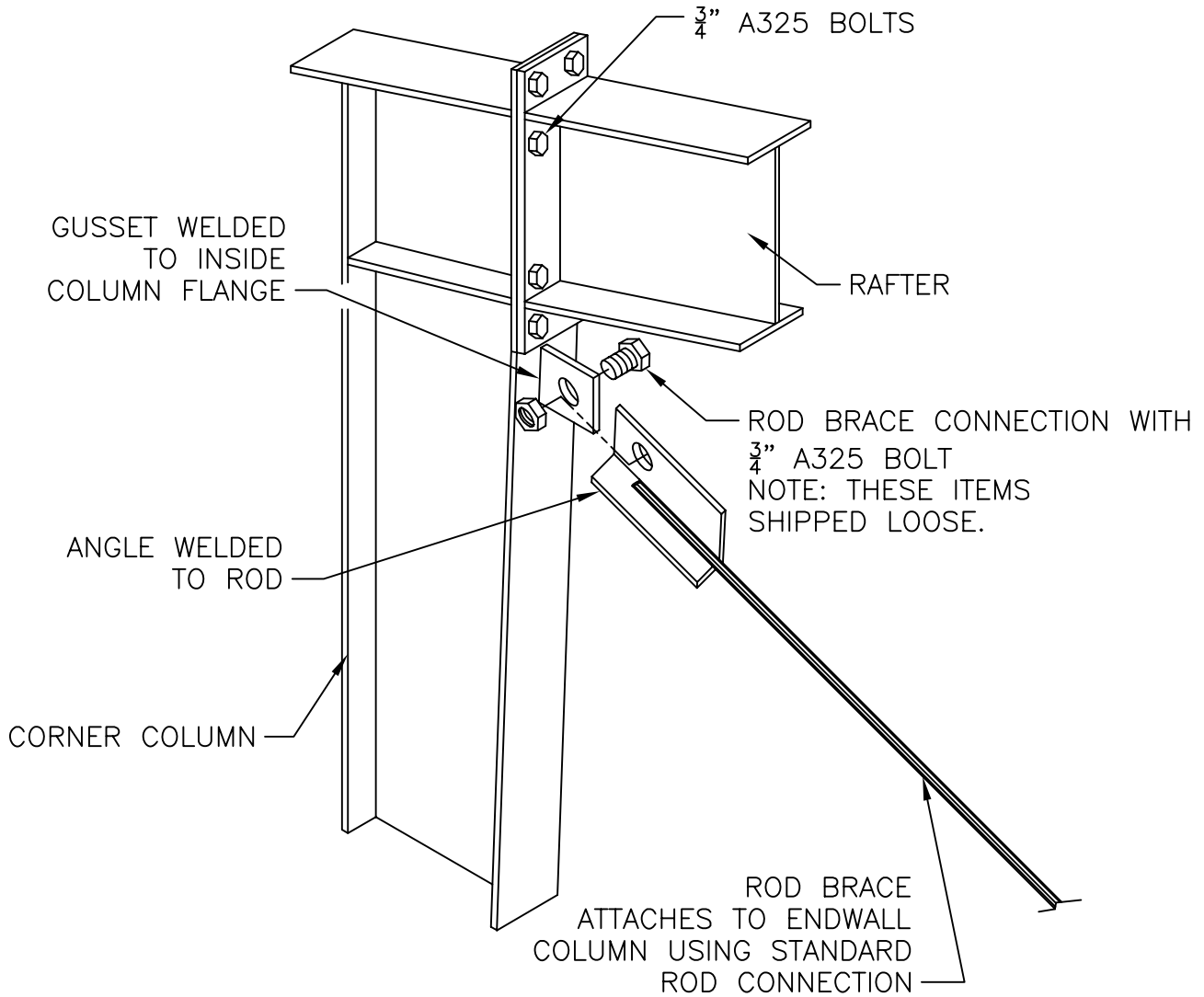
CLEVIS ROD CONNECTION



END FRAME DETAIL
RIGID END FRAME ROD ATTACHMENT

SHT. NO. EFO1004	
DATE FEB. 03	REV. 00

CLEVIS ROD CONNECTION

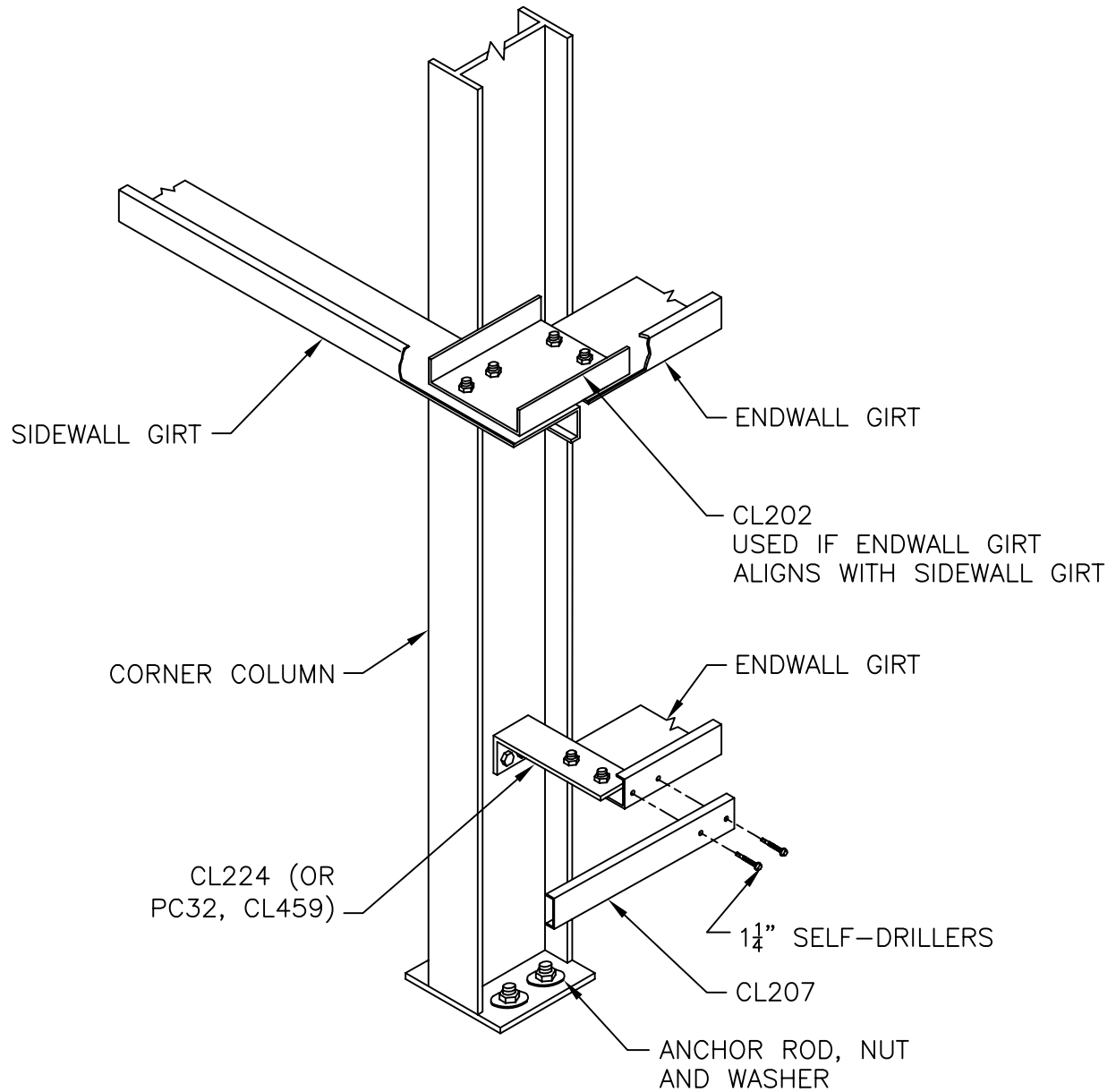


NOTES: FRAME SHAPES MAY VARY.
SEE ERECTION DRAWING FOR ELEVATIONS AND MARKS.

END FRAME DETAIL
CORNER COLUMN GIRT CONNECTIONS
WITH BYPASS GIRTS

SHT. NO. EF02001	
DATE JUL. 06	REV. 00

SHEETED SIDEWALL AND SHEETED ENDWALL

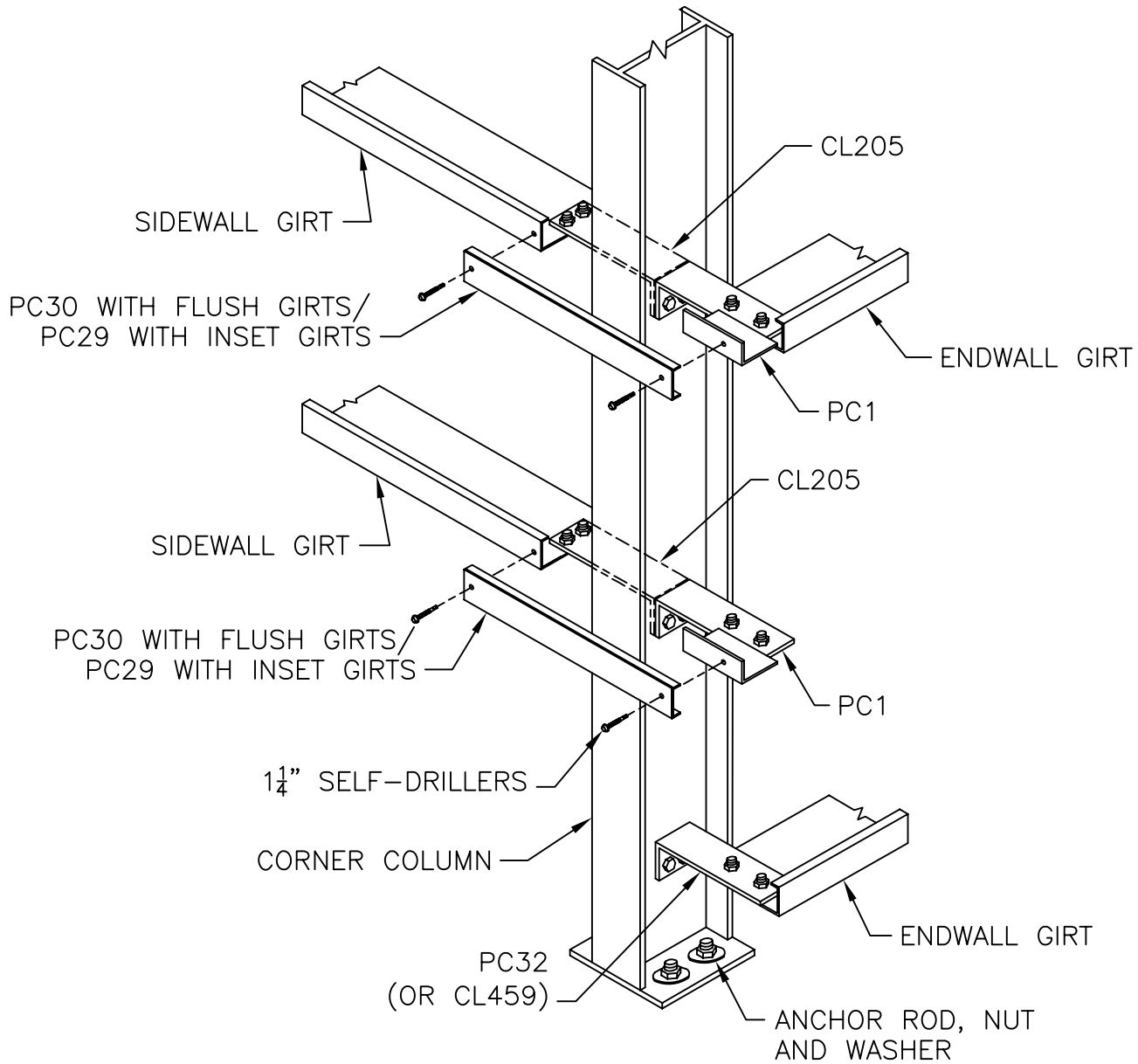


NOTES: FRAME SHAPES MAY VARY.
SEE ERECTION DRAWING FOR ELEVATIONS AND MARKS.
ALL GIRT CONNECTIONS USE 1/2" A325 BOLTS

END FRAME DETAIL
CORNER COLUMN GIRTS CONNECTIONS
WITH FLUSH OR INSET GIRTS

SHT. NO. EFO2010	
DATE MAR. 06	REV. 00

GIRTS CLEAR COLUMN FLANGE
SHEETED SIDEWALL AND ENDWALL

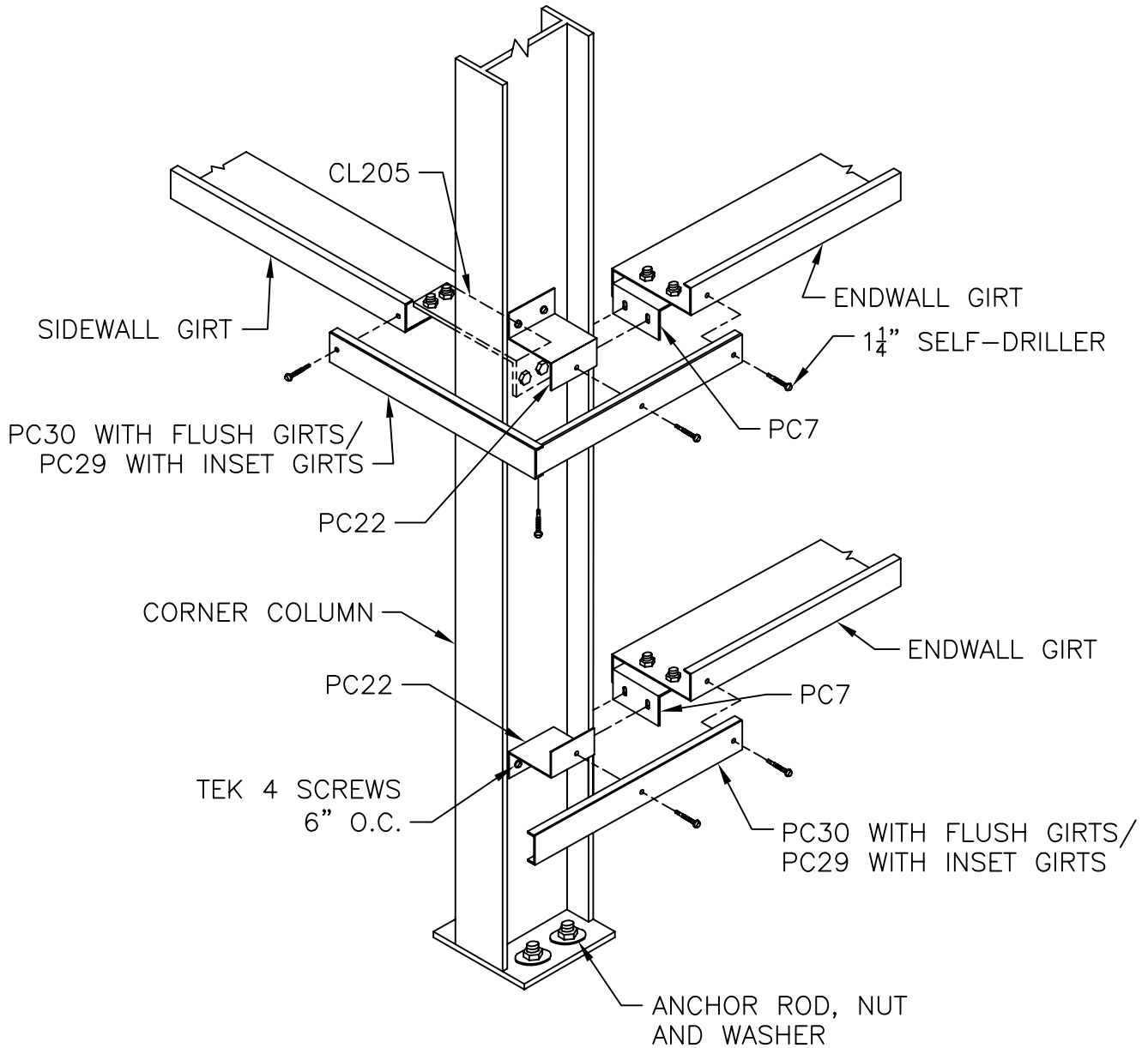


NOTES: FRAME SHAPES MAY VARY.
SEE ERECTION DRAWING FOR ELEVATIONS AND MARKS.
ALL GIRT CONNECTIONS USE 1/2" A325 BOLTS.

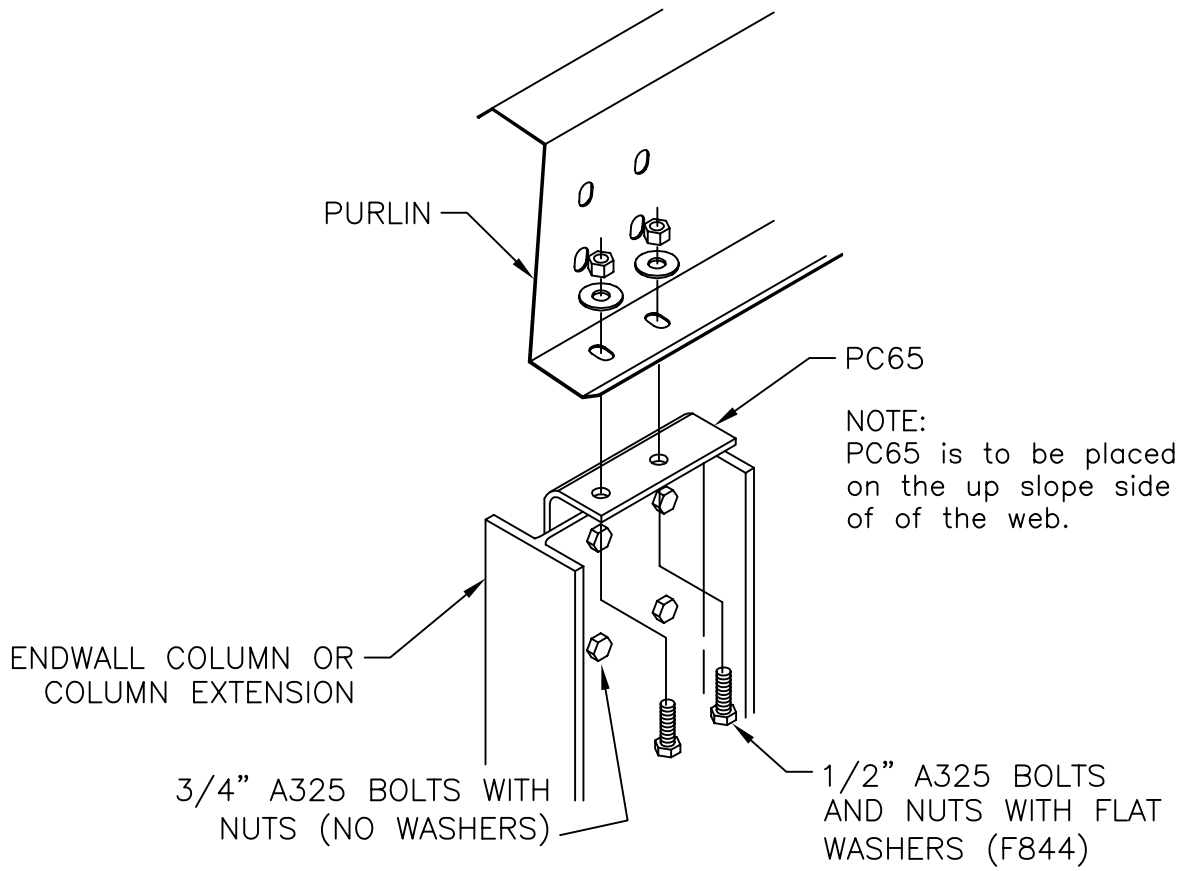
END FRAME DETAIL
 CORNER COLUMN GIRTS CONNECTIONS
 WITH FLUSH OR INSET GIRTS

SHT. NO. EF02012	
DATE FEB. 03	REV. 00

GIRTS DO NOT CLEAR COLUMN FLANGE
 SHEETED SIDEWALL AND ENDWALL



NOTES: FRAME SHAPES MAY VARY.
 SEE ERECTION DRAWINGS FOR ELEVATIONS AND MARKS.
 ALL GIRT CONNECTIONS USE 1/2" A325 BOLTS.

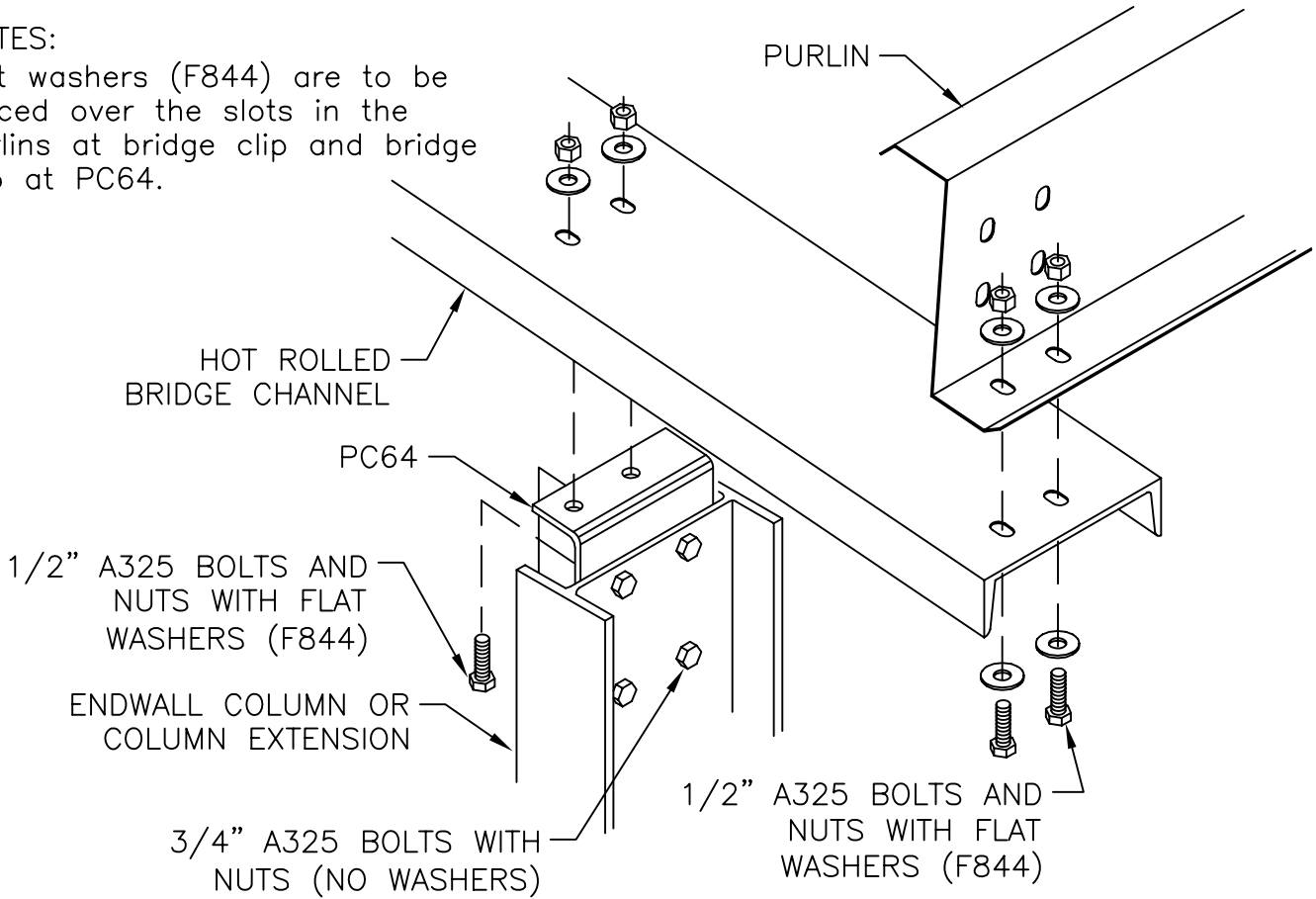


END POST BRIDGE CLIP CONNECTION
HOT ROLLED BRIDGE CHANNEL

SHT. NO. EF09003	
DATE JUL. 06	REV. 00

NOTES:

Flat washers (F844) are to be placed over the slots in the purlins at bridge clip and bridge clip at PC64.



END POST TO BRIDGE CLIP CONNECTION
END POST AT PEAK

SHT. NO. EF09004	
DATE JUL. 06	REV. 00

NOTE: A washer is required on the exterior surface of any outer ply having a slot in a bolted connection. Flat washers (F844) are to be placed over the slots in the purlins and bridge clip.

