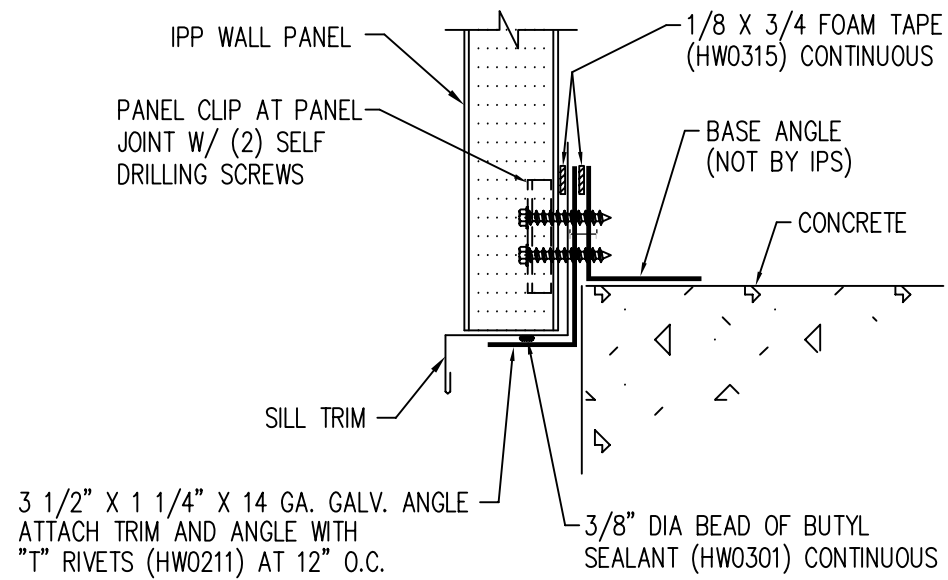
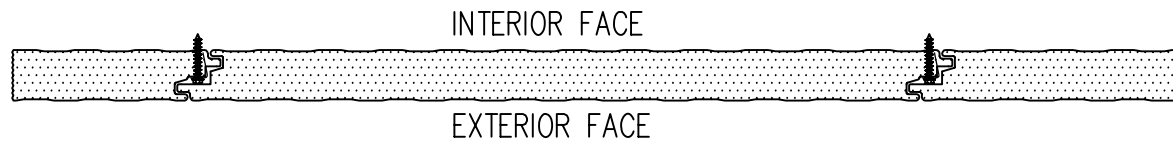
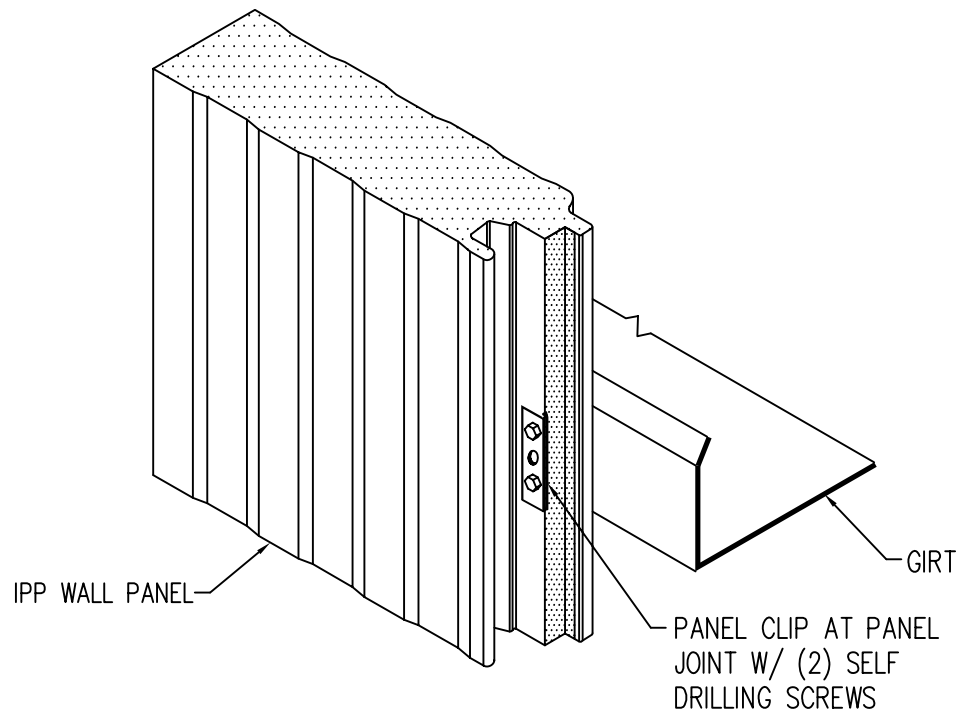


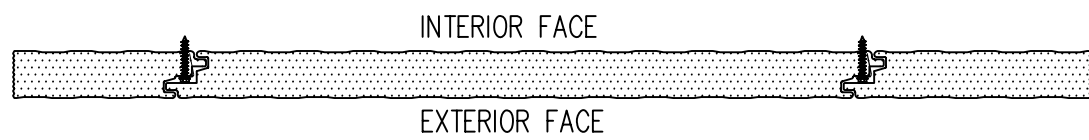
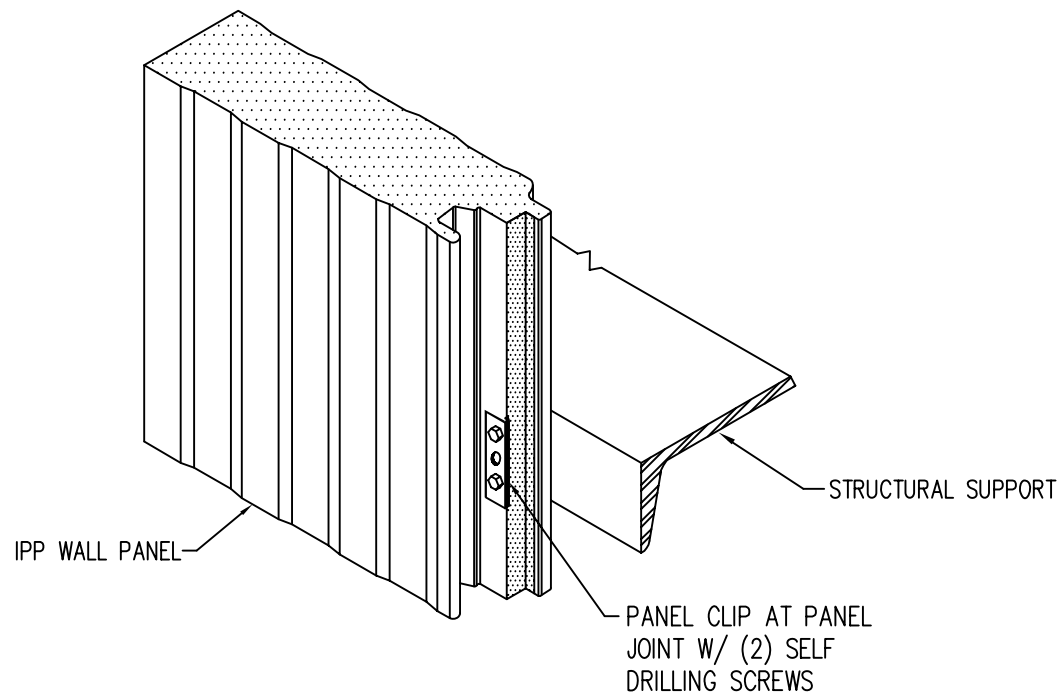
WALL BASE WITH RECESS



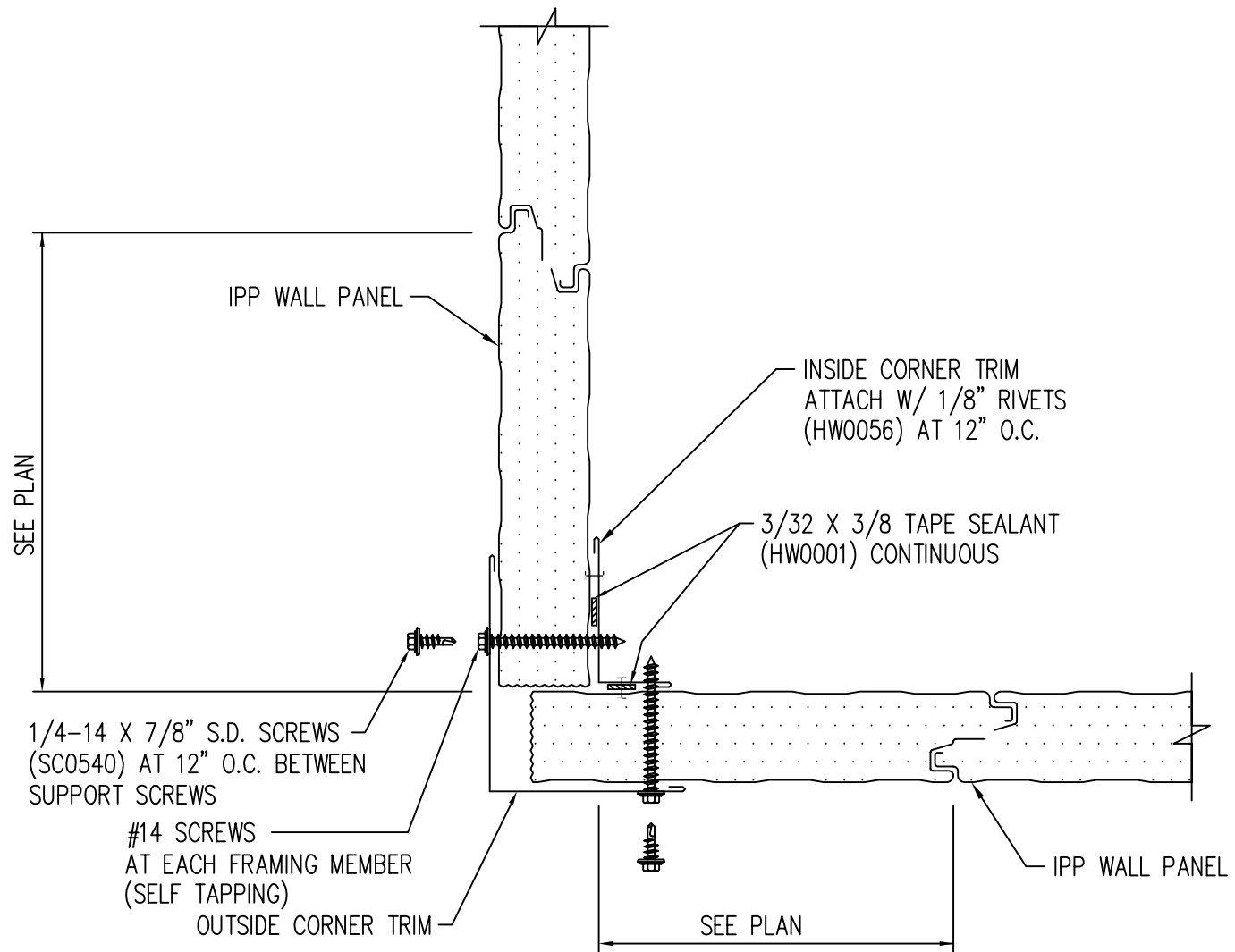
WALL BASE WITHOUT RECESS



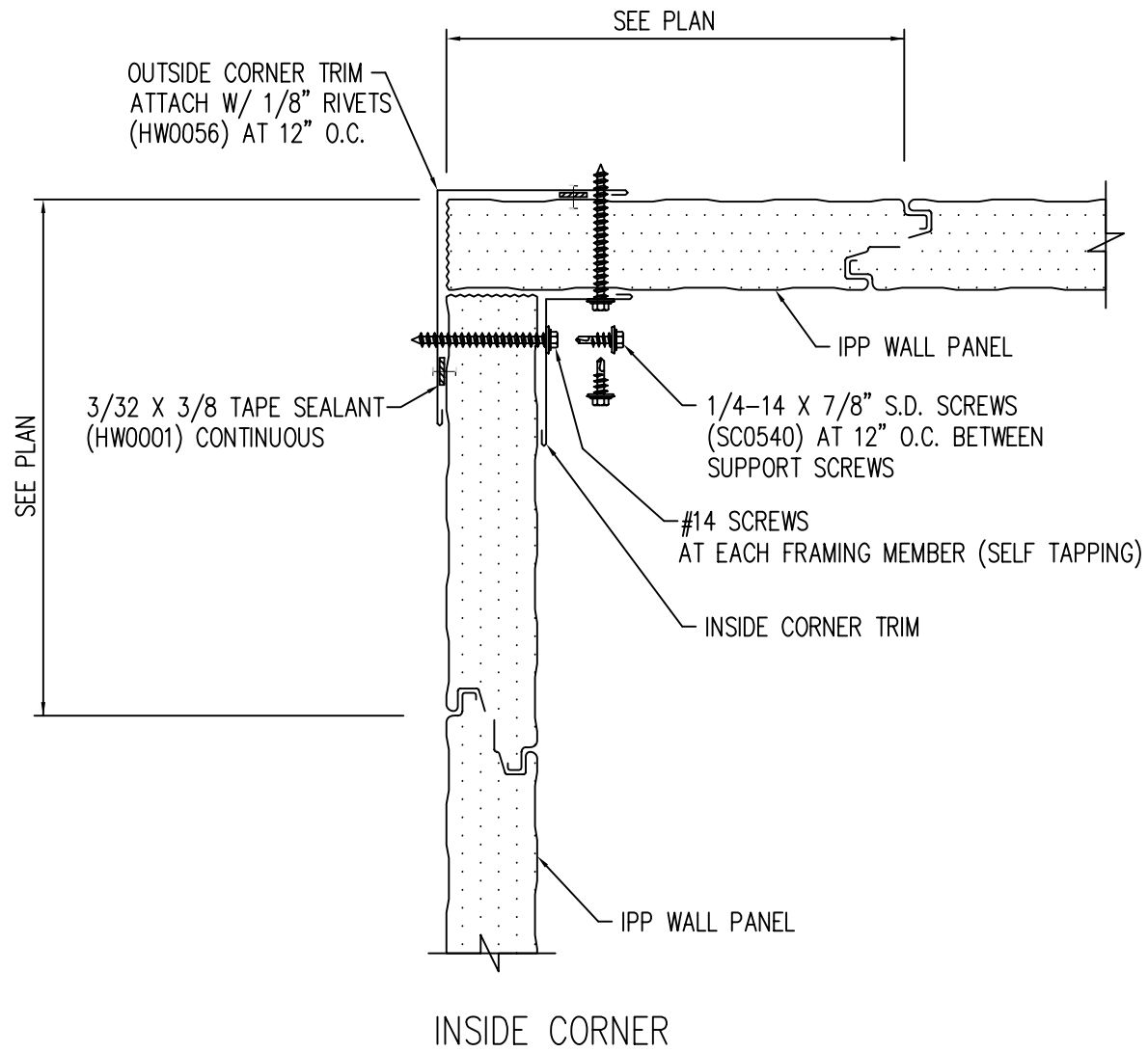
GIRT DETAIL W/ COLD FORMED ZEE

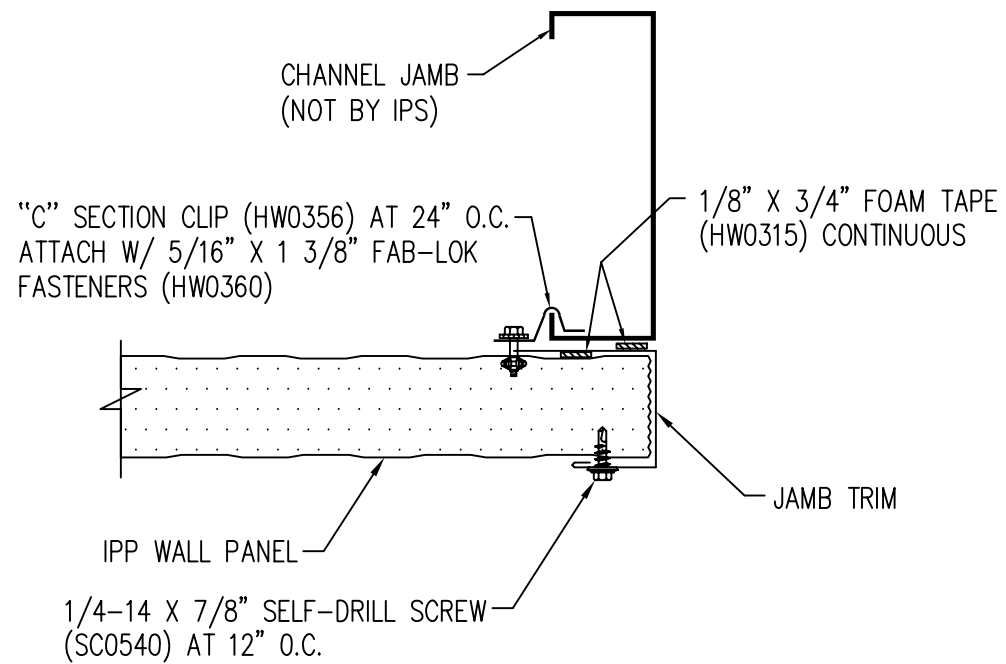


GIRT DETAIL W/ HOT ROLLED MEMBER

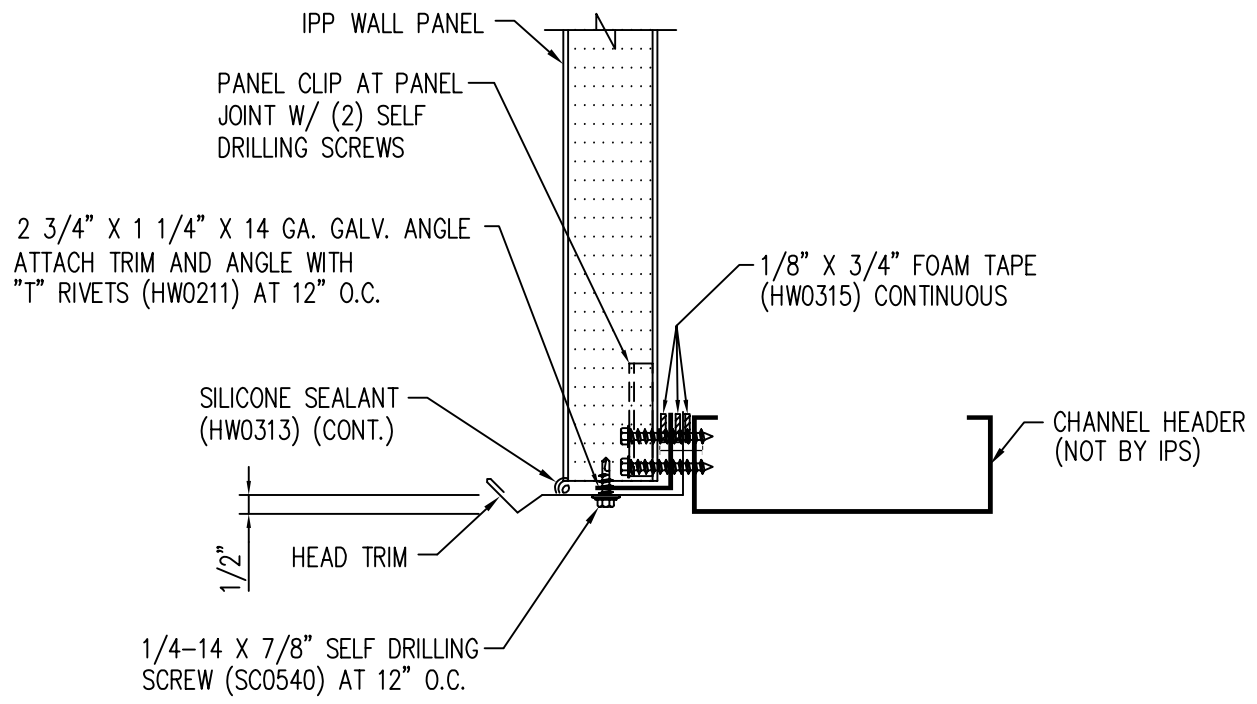


OUTSIDE CORNER

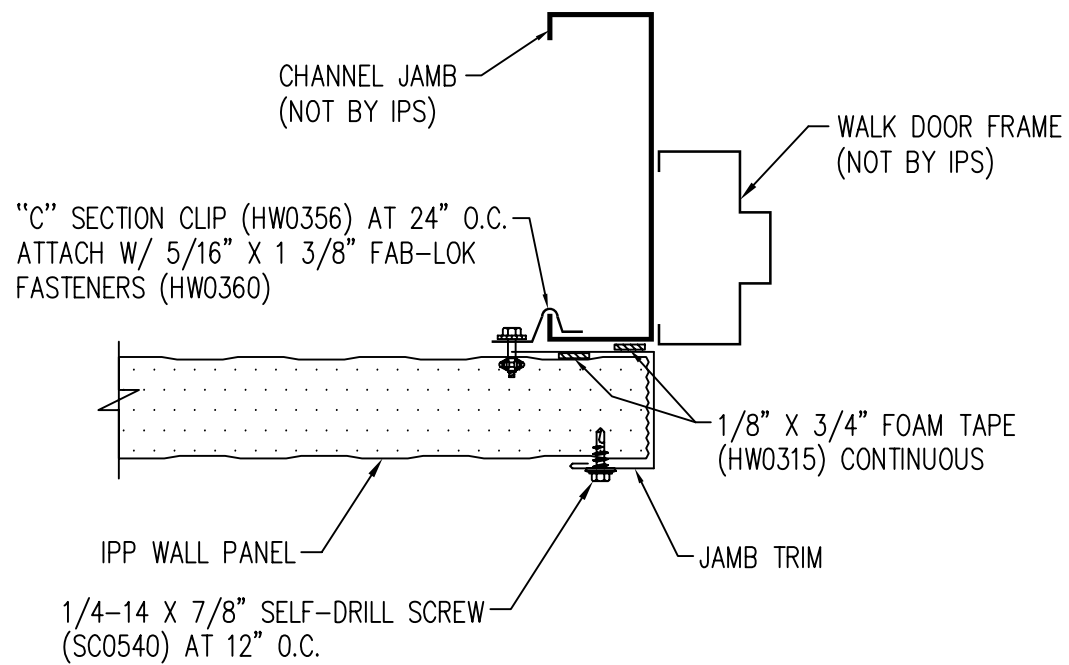




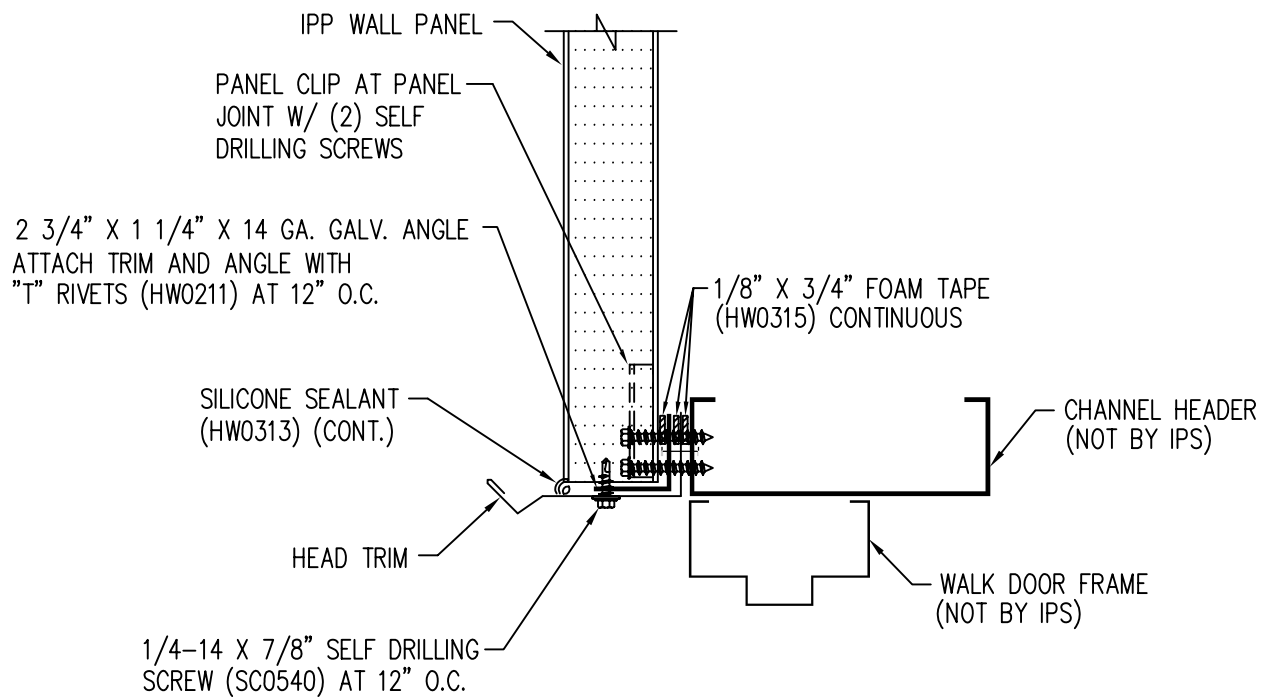
JAMB DETAIL AT OVERHEAD DOOR



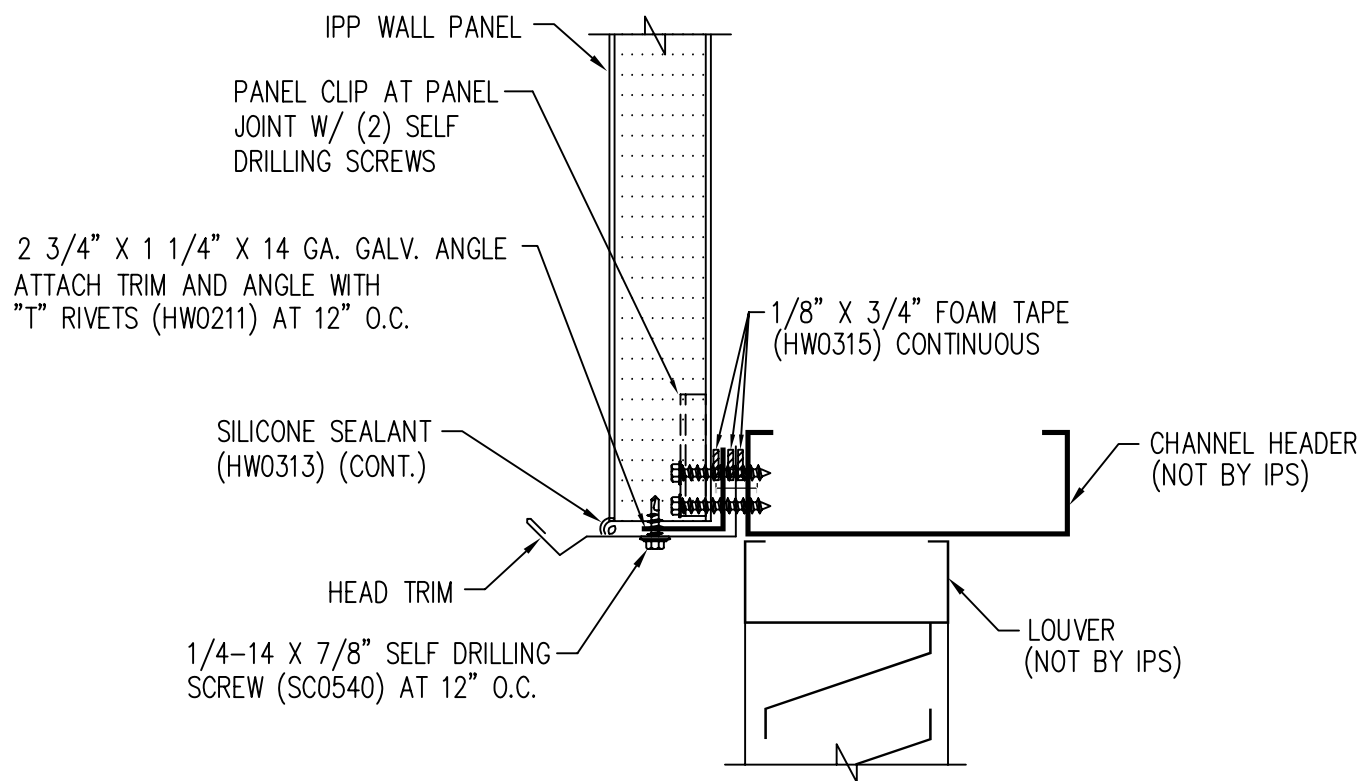
HEAD DETAIL AT OVERHEAD DOOR



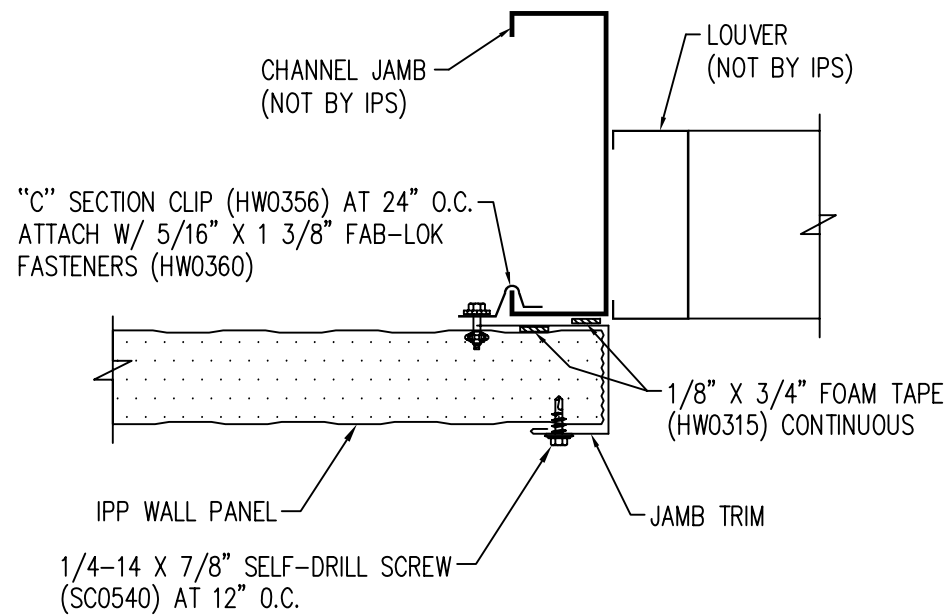
JAMB DETAIL AT WALK DOOR



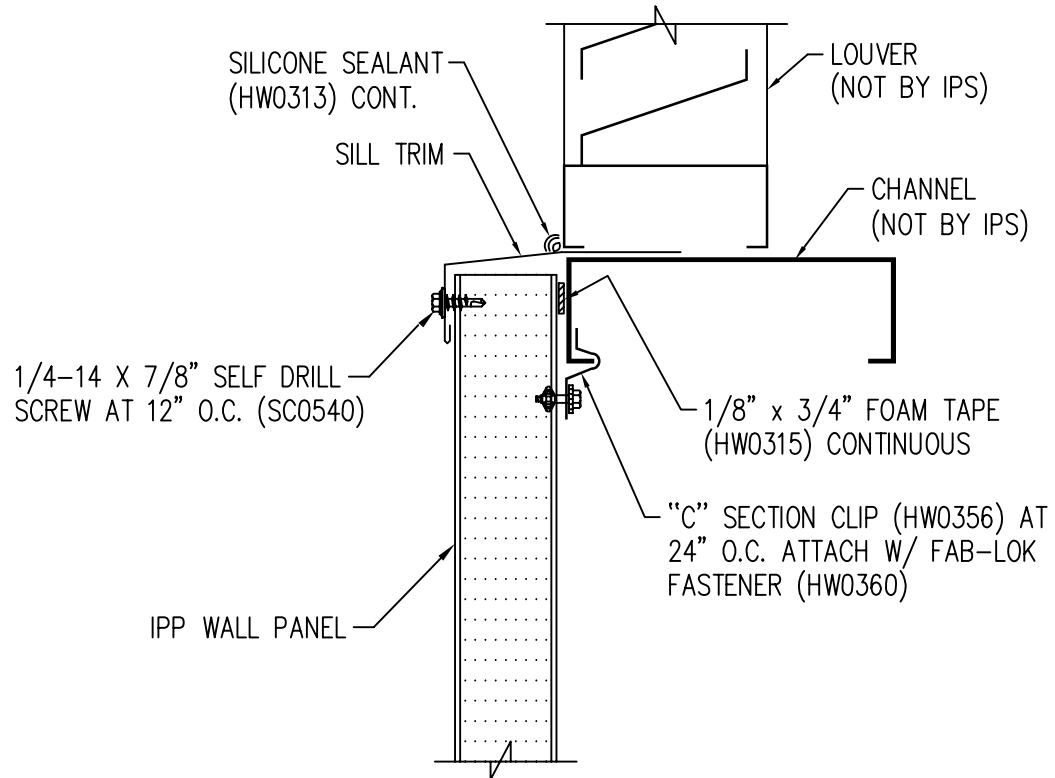
HEAD DETAIL AT WALK DOOR



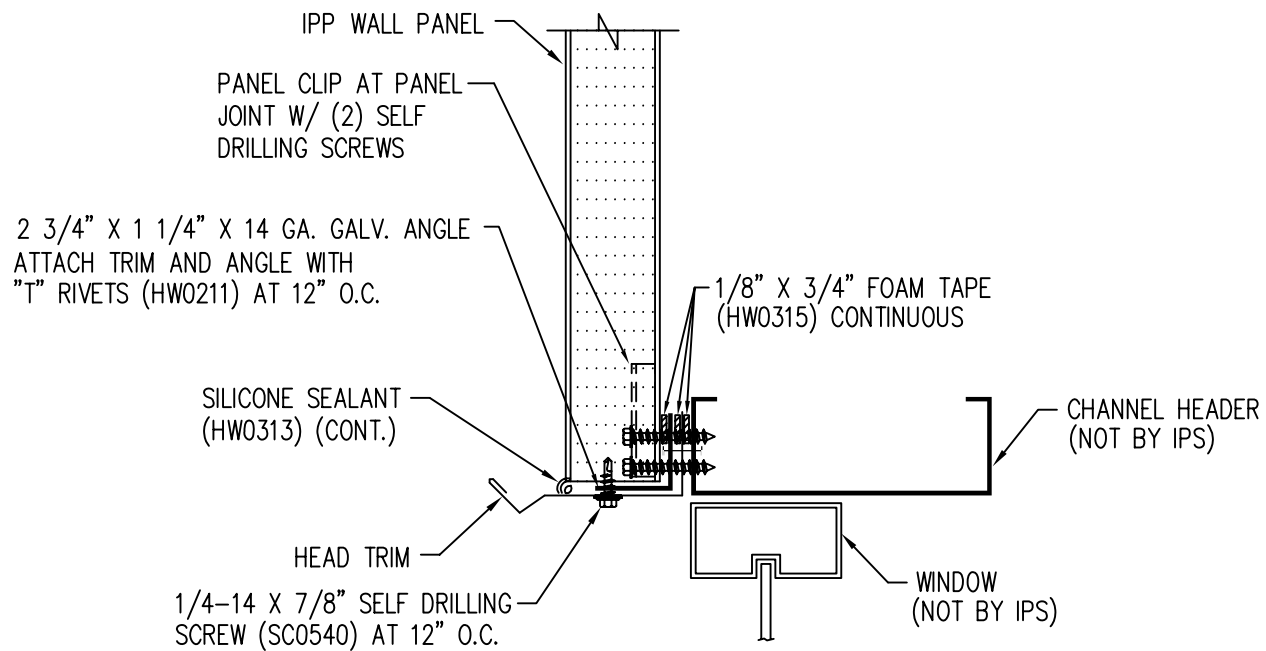
HEAD DETAIL AT LOUVER



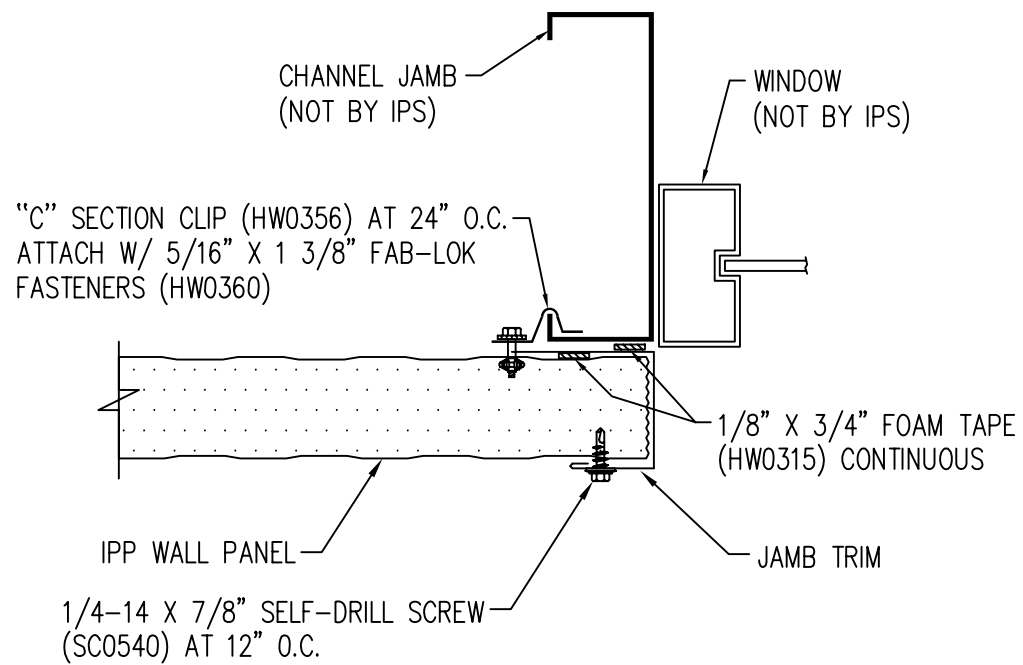
JAMB DETAIL AT LOUVER



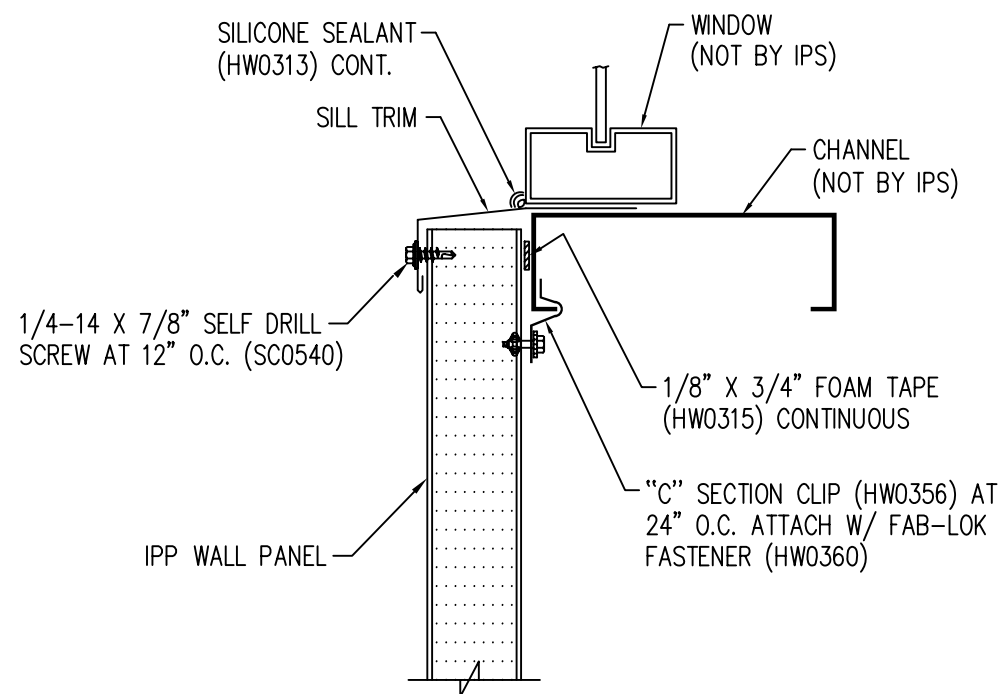
SILL DETAIL AT LOUVER



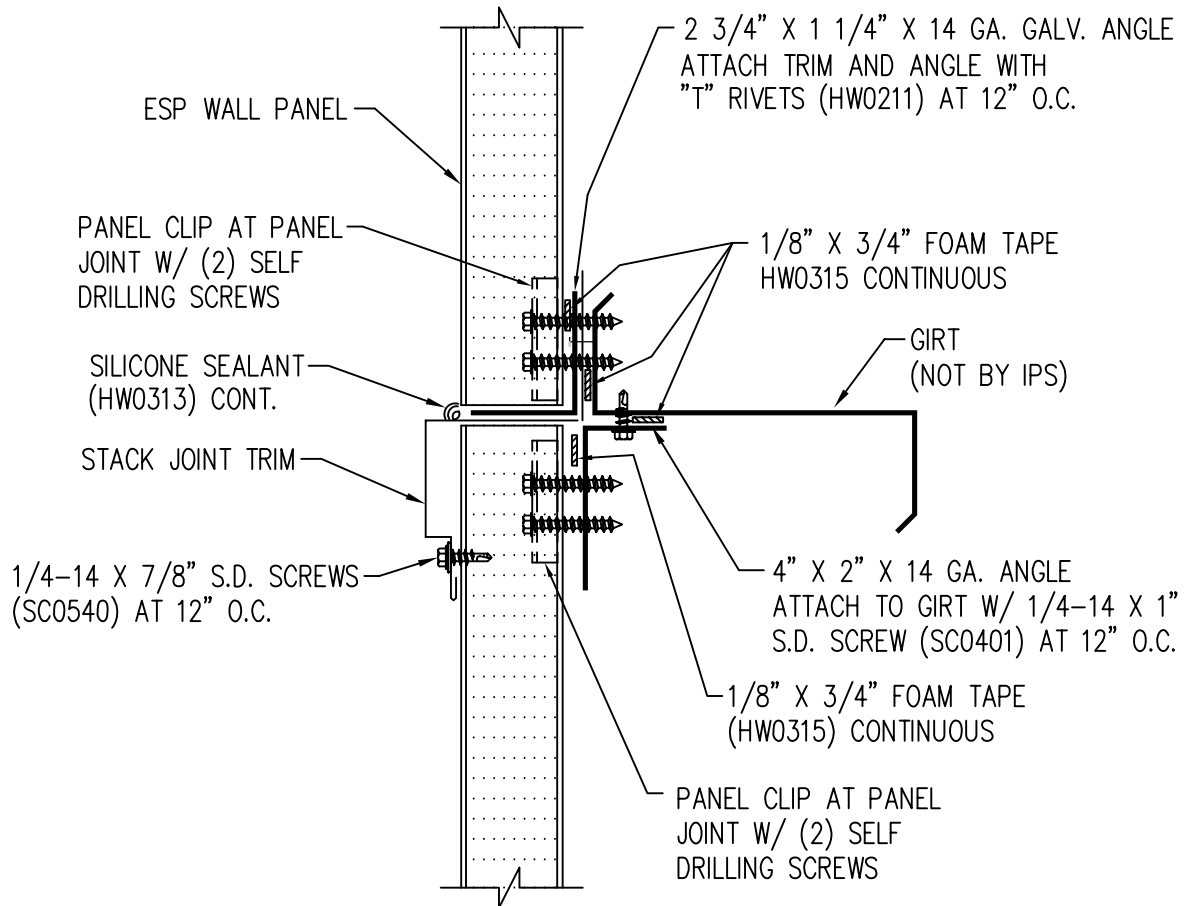
HEAD DETAIL AT WINDOW



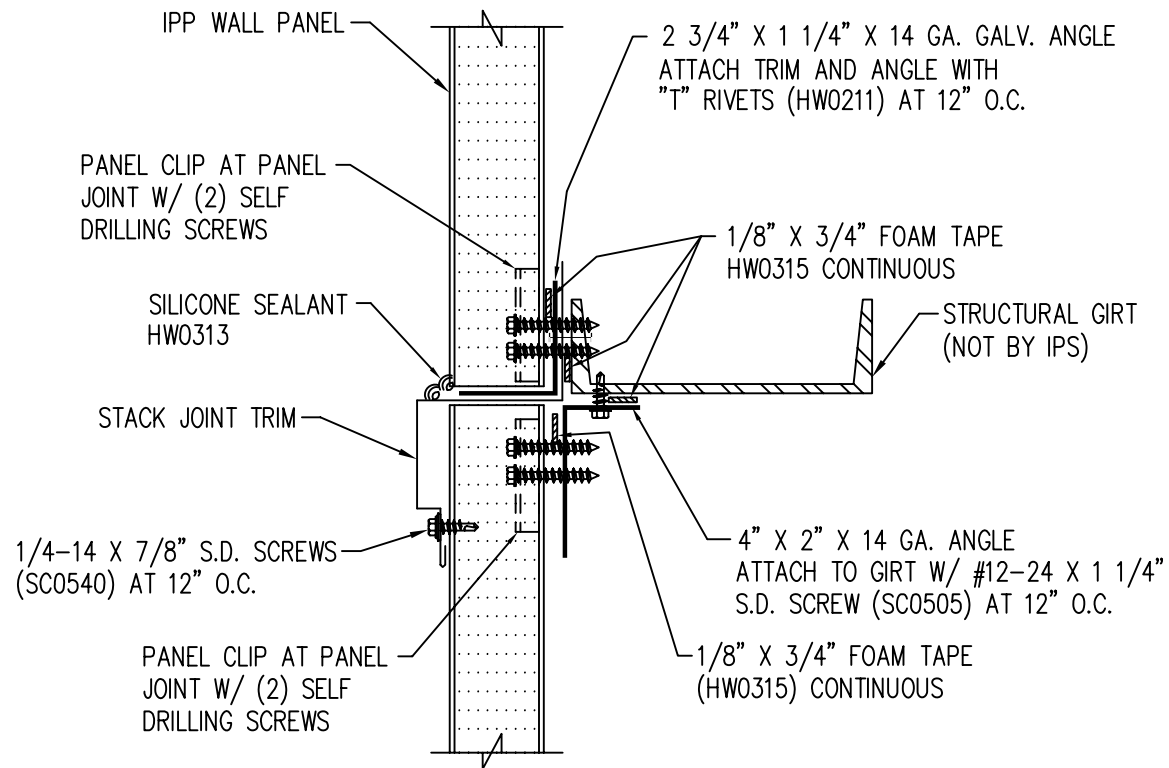
JAMB DETAIL AT WINDOW



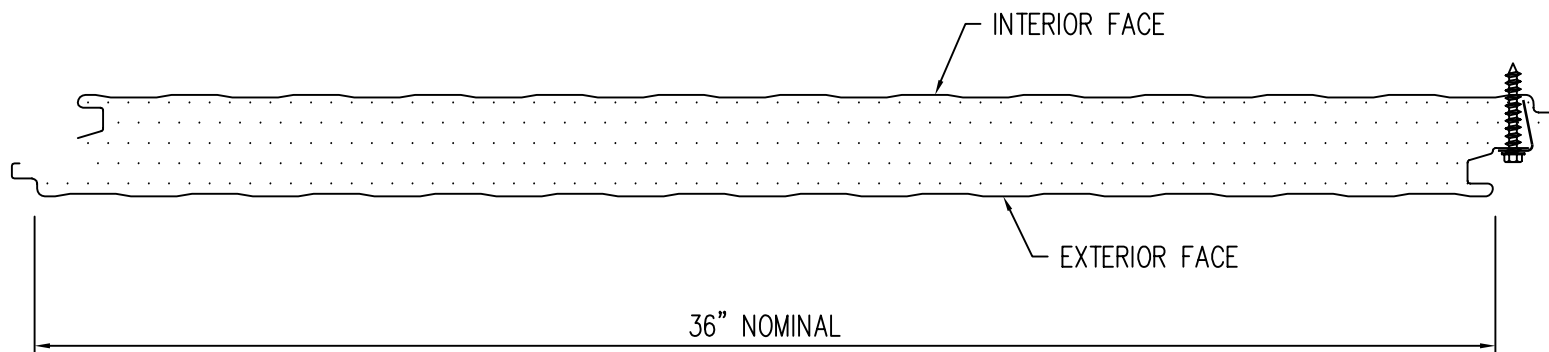
SILL DETAIL AT WINDOW



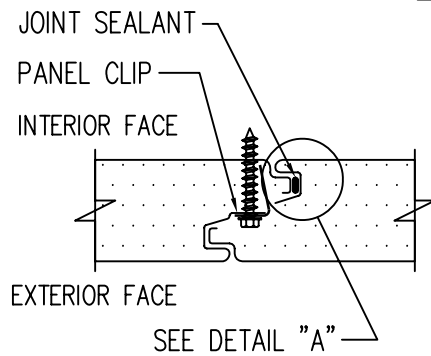
DETAIL AT WALL SPLICE WITH COLD FORMED MEMBER



DETAIL AT WALL SPLICE WITH HOT ROLLED MEMBER

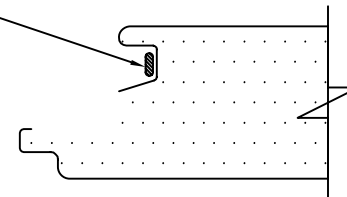


IPP WALL PANEL JOINT DETAIL



JOINT SEALANT APPLICATION

NOTE: FIELD APPLIED JOINT SEALANT  
 HW0301, APPLY MINIMUM 3/8"  
 BEAD. ONE TUBE = APPROX.  
 15 L.F. OF PANEL JOINT



DETAIL "A"