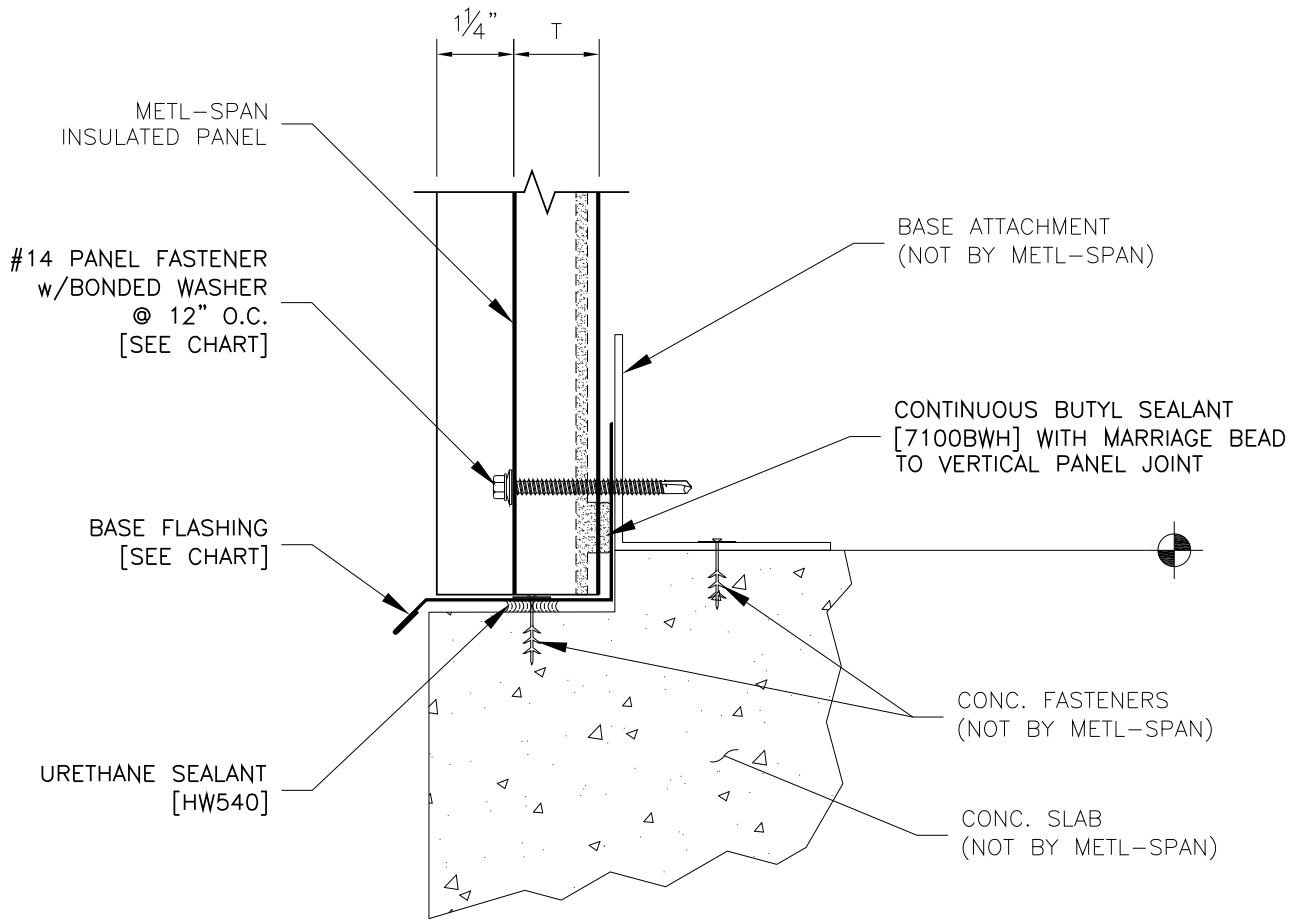


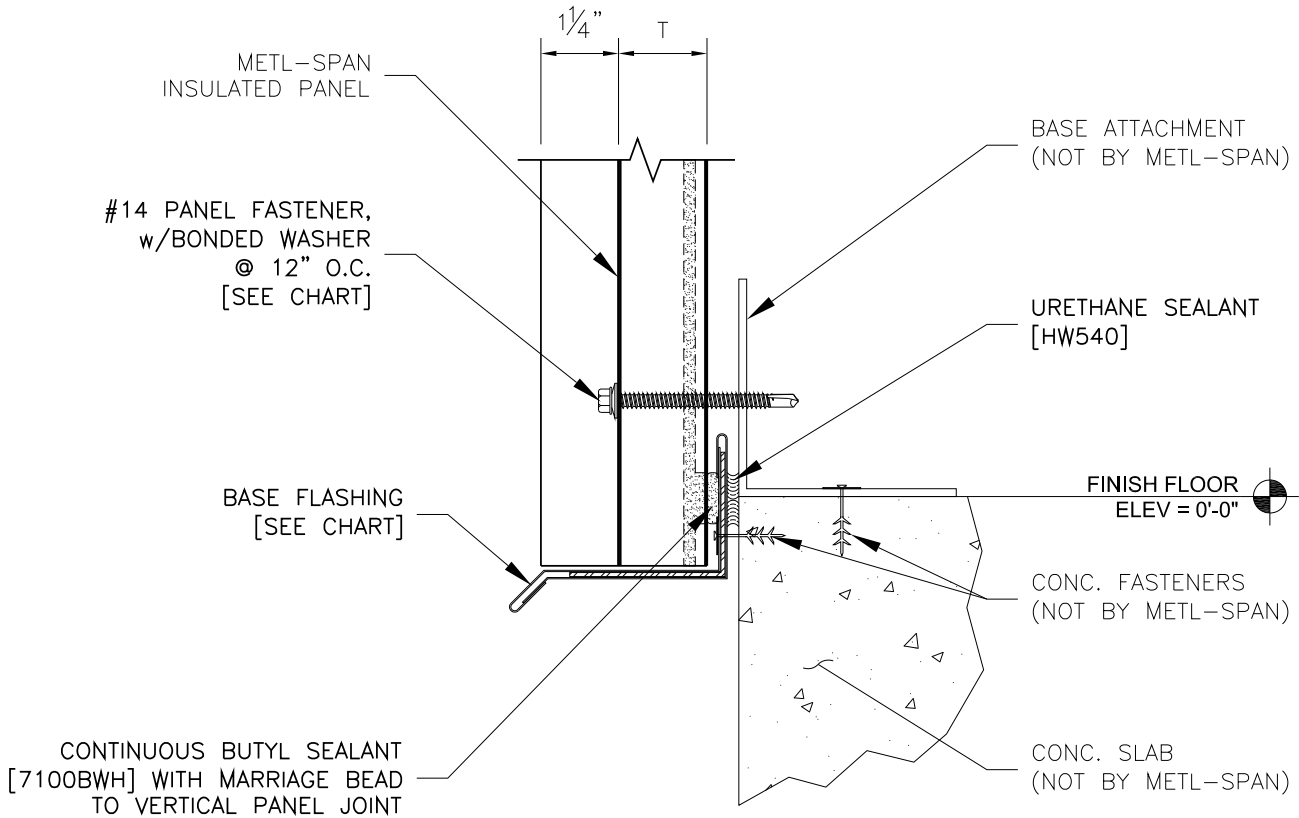
REFER TO SHEET "CI-INFO" FOR ADDITIONAL INFORMATION REGARDING THE APPLICATION OF SEALANTS, FASTENERS, AND CLOSURE MATERIALS.
CONSULT METL-SPAN TO DETERMINE ALLOWABLE LOAD AND SPACING OF ATTACHMENT FASTENERS.

T	BASE FLASHING	TEK III PANEL FASTENER	TEK V PANEL FASTENER	TYPE B PANEL FASTENER
1.5"	F5060	1124P##	1232P##	1324P##
2"	F5005	1124P##	1232P##	1324P##
2.5"	F5017	1132P##	1240P##	1332P##
3"	F5036	1132P##	1240P##	1332P##
4"	F5055	1140P##	1248P##	1340P##
LS IMP WALL FLUSH BASE DETAIL		APPLICATION: COMMERCIAL & INDUSTRIAL		LS1.5-BE-01 DATE: MARCH. 6, 2015



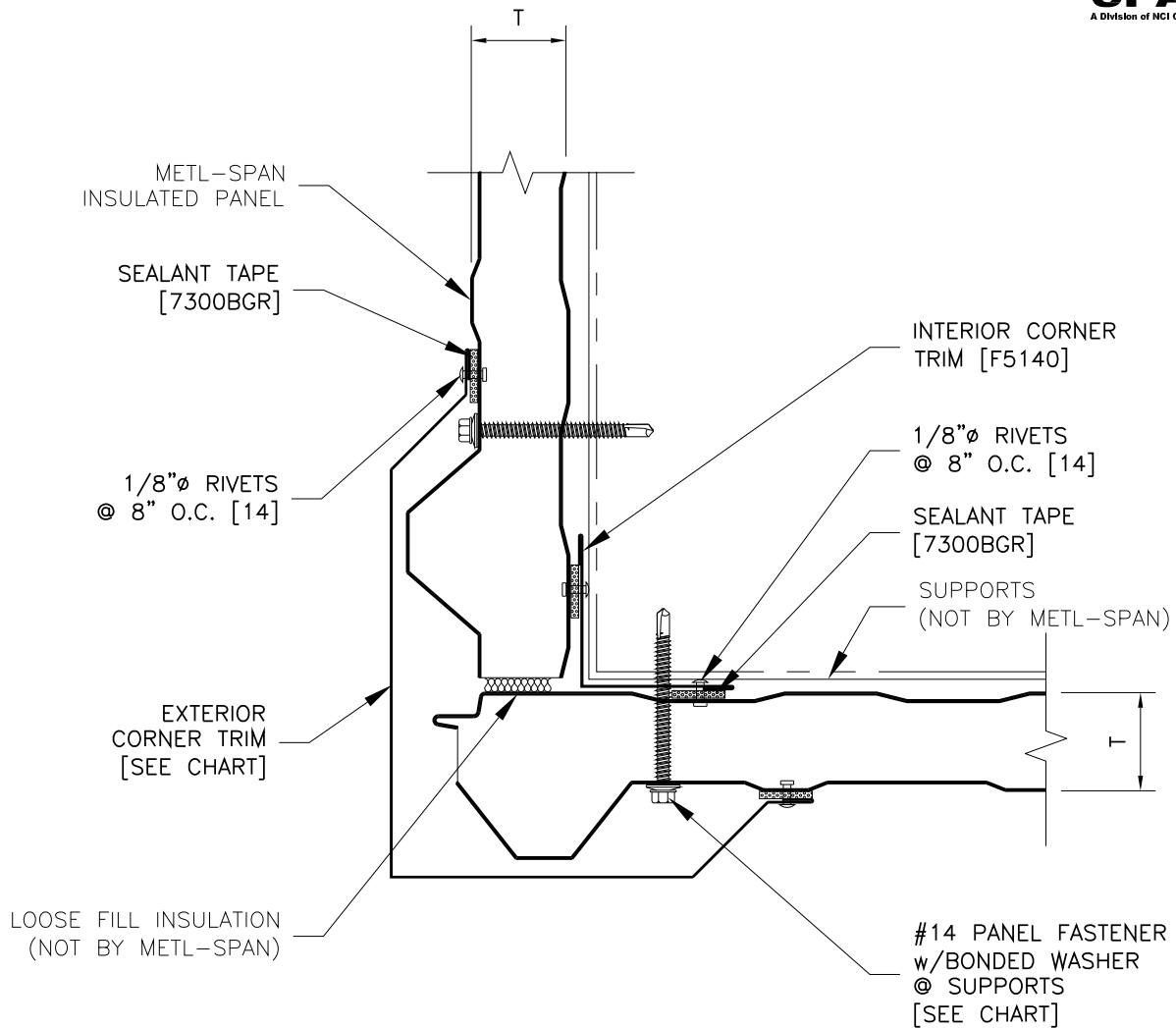
REFER TO SHEET "CI-INFO" FOR ADDITIONAL INFORMATION REGARDING THE APPLICATION OF SEALANTS, FASTENERS, AND CLOSURE MATERIALS.
CONSULT METL-SPAN TO DETERMINE ALLOWABLE LOAD AND SPACING OF ATTACHMENT FASTENERS.

T	BASE FLASHING	TEK III PANEL FASTENER	TEK V PANEL FASTENER	TYPE B PANEL FASTENER
1.5"	F5060	1124P##	1232P##	1324P##
2"	F5005	1124P##	1232P##	1324P##
2.5"	F5017	1132P##	1240P##	1332P##
3"	F5036	1132P##	1240P##	1332P##
4"	F5055	1140P##	1248P##	1340P##
LS IMP WALL NOTCH BASE DETAIL W/ DRIP EDGE		APPLICATION: COMMERCIAL & INDUSTRIAL		LS1.5-BE-02 DATE: MARCH 6, 2015



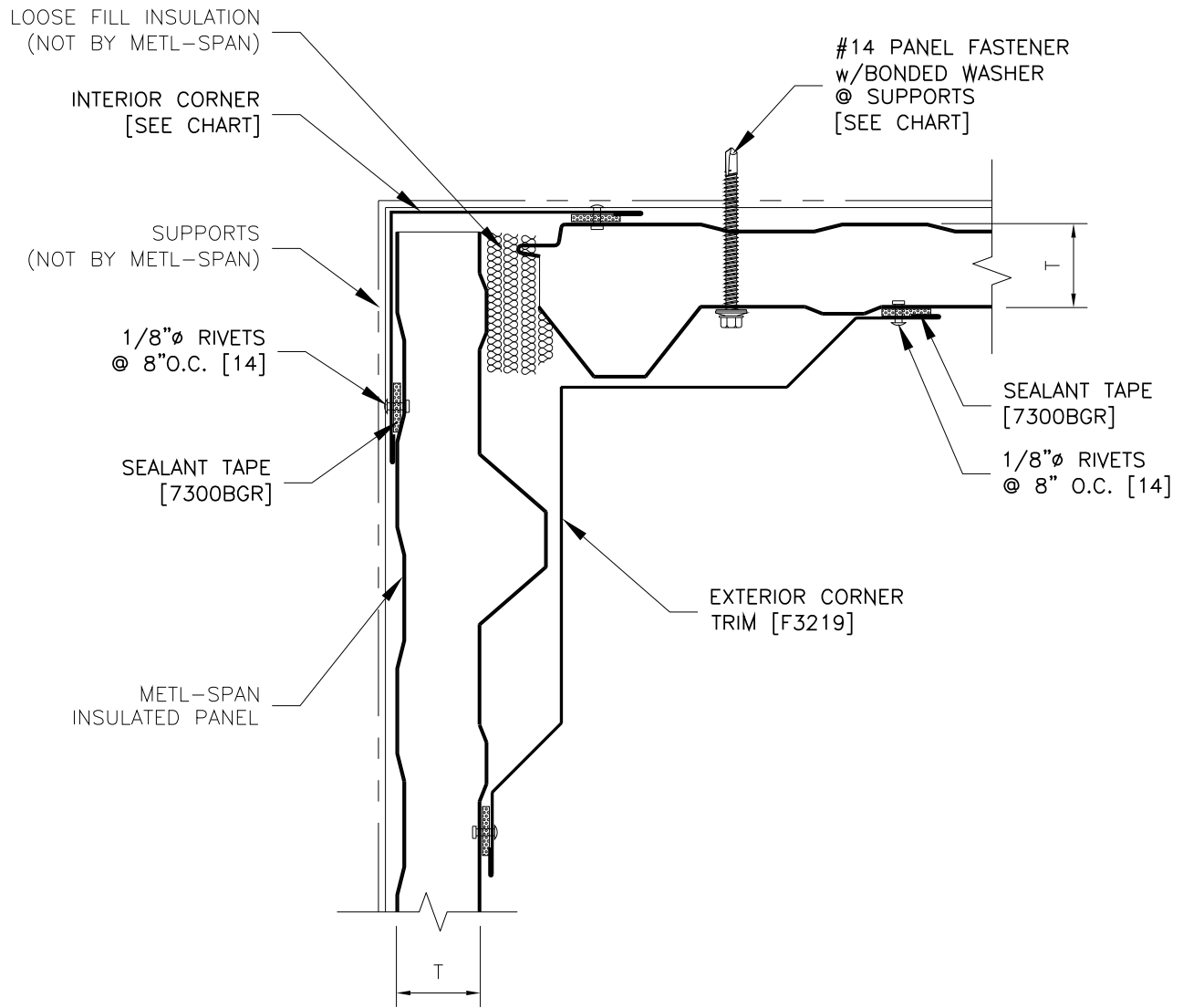
REFER TO SHEET "CI-INFO" FOR ADDITIONAL INFORMATION REGARDING THE APPLICATION OF SEALANTS, FASTENERS, AND CLOSURE MATERIALS.
CONSULT METL-SPAN TO DETERMINE ALLOWABLE LOAD AND SPACING OF ATTACHMENT FASTENERS.

T	BASE FLASHING	TEK III CLIP FASTENER	TEK V CLIP FASTENER	TYPE B CLIP FASTENER
1.5"	F5008	1124P##	1232P##	1324P##
2"	F5009	1124P##	1232P##	1324P##
2.5"	F5010	1132P##	1240P##	1332P##
3"	F5011	1132P##	1240P##	1332P##
4"	F5012	1140P##	1248P##	1340P##
LS IMP WALL OVERHANG BASE DETAIL W/ SUPPORT		APPLICATION: COMMERCIAL & INDUSTRIAL		LS1.5-BE-05 DATE: July 6, 2015



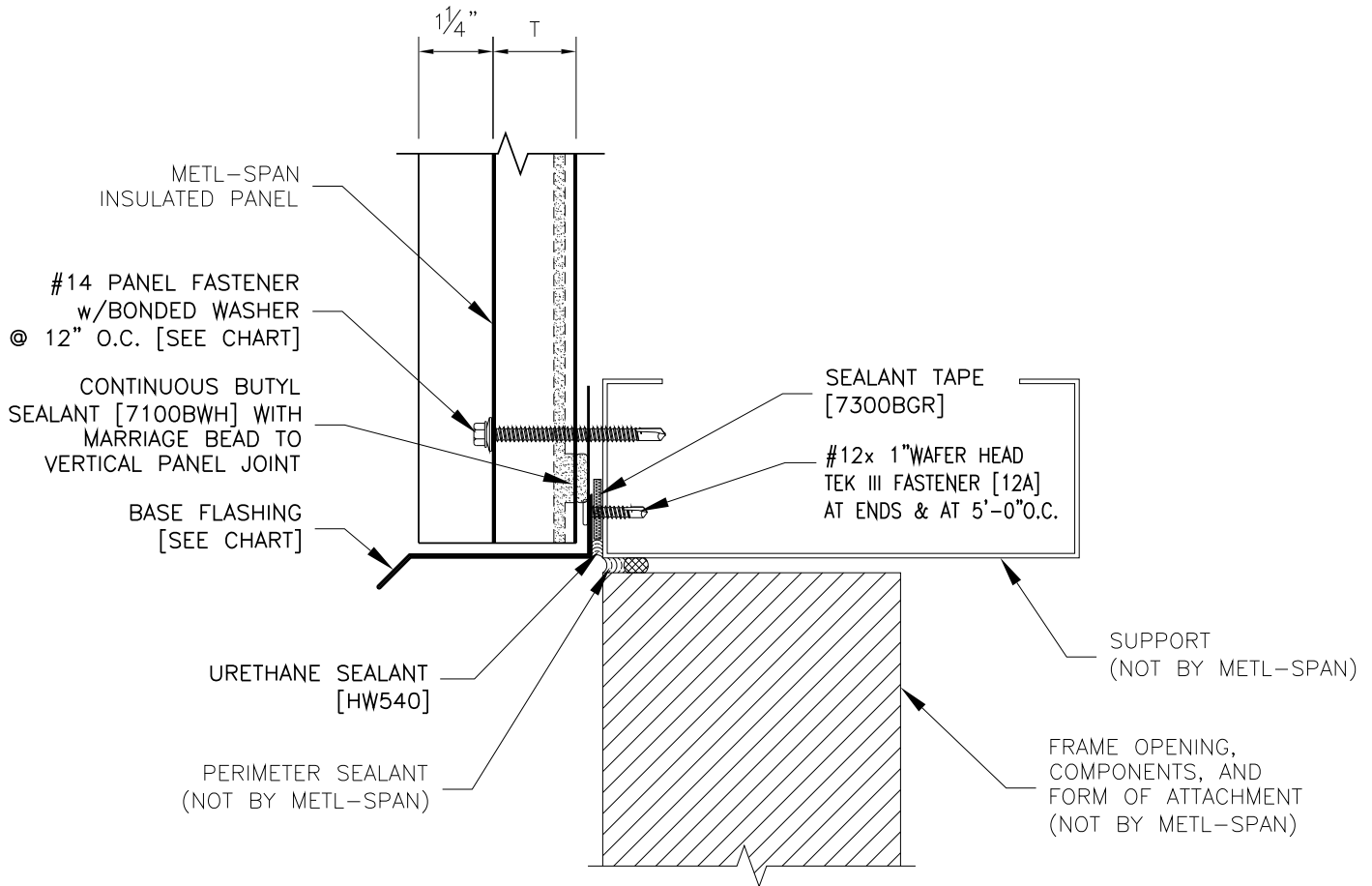
REFER TO SHEET "CI-INFO" FOR ADDITIONAL INFORMATION REGARDING THE APPLICATION OF SEALANTS, FASTENERS, AND CLOSURE MATERIALS.
CONSULT METL-SPAN TO DETERMINE ALLOWABLE LOAD AND SPACING OF ATTACHMENT FASTENERS.

T	CORNER FLASHING	TEK III PANEL FASTENER	TEK V PANEL FASTENER	TYPE B PANEL FASTENER
1.5"	F3229	1124P##	1232P##	1324P##
2"	F3229	1124P##	1232P##	1324P##
2.5"	F3229	1132P##	1240P##	1332P##
3"	F3229	1132P##	1240P##	1332P##
4"	F3231	1140P##	1248P##	1340P##
LS IMP WALL OUTSIDE CORNER		APPLICATION: COMMERCIAL & INDUSTRIAL		LS1.5-CE-01 DATE: March 11, 2015



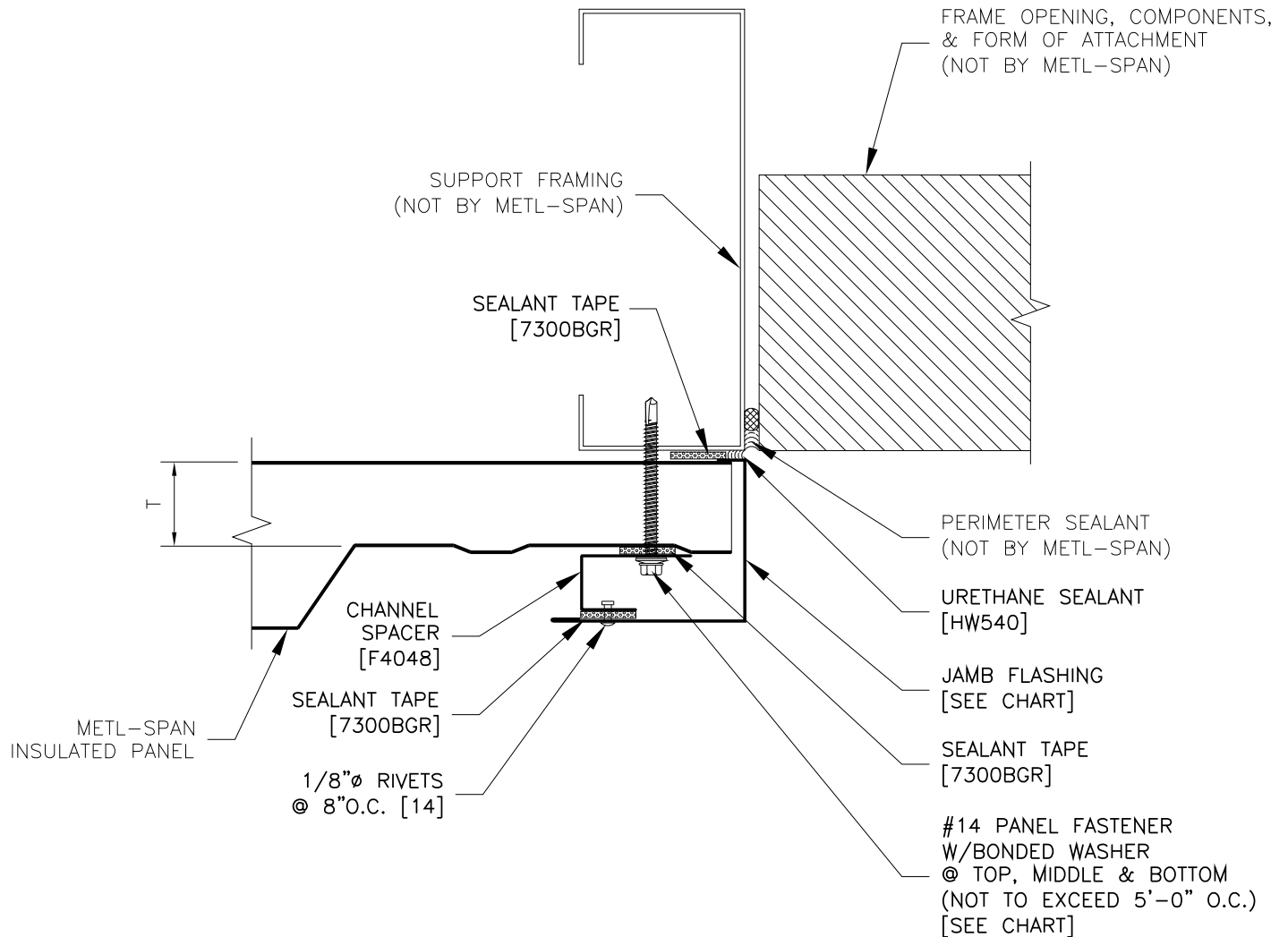
REFER TO SHEET "CI-INFO" FOR ADDITIONAL INFORMATION REGARDING THE APPLICATION OF SEALANTS, FASTENERS, AND CLOSURE MATERIALS.
CONSULT METL-SPAN TO DETERMINE ALLOWABLE LOAD AND SPACING OF ATTACHMENT FASTENERS.

T	CORNER FLASHING	TEK III PANEL FASTENER	TEK V PANEL FASTENER	TYPE B PANEL FASTENER
1.5"	F3214	1124P##	1232P##	1324P##
2"	F3214	1124P##	1232P##	1324P##
2.5"	F3214	1132P##	1240P##	1332P##
3"	F3214	1132P##	1240P##	1332P##
4"	F3230	1140P##	1248P##	1340P##
LS IMP WALL INSIDE CORNER		APPLICATION: COMMERCIAL & INDUSTRIAL		LS1.5-CE-02 DATE: March 11, 2015



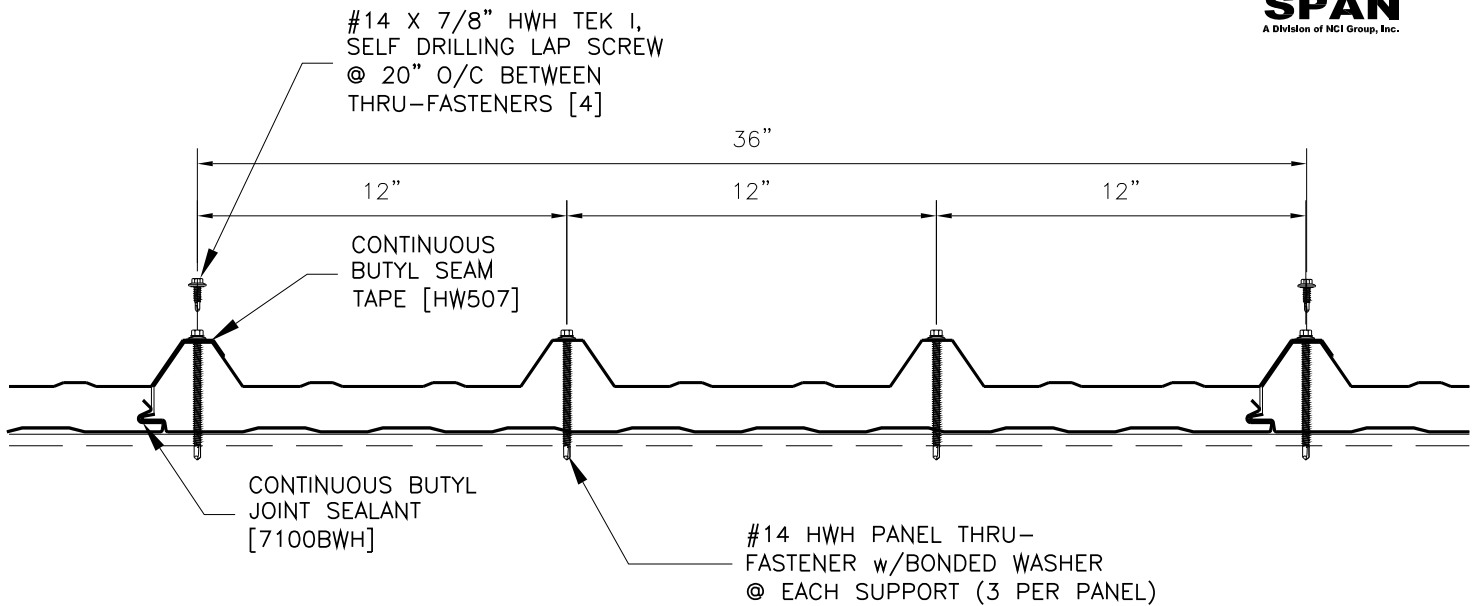
REFER TO SHEET "CI-INFO" FOR ADDITIONAL INFORMATION REGARDING THE APPLICATION OF SEALANTS, FASTENERS, AND CLOSURE MATERIALS.
CONSULT METL-SPAN TO DETERMINE ALLOWABLE LOAD AND SPACING OF ATTACHMENT FASTENERS.

T	BASE FLASHING	TEK III PANEL FASTENER	TEK V PANEL FASTENER	TYPE B PANEL FASTENER
1.5"	F3290	1124P##	1232P##	1324P##
2"	F3291	1124P##	1232P##	1324P##
2.5"	F3292	1132P##	1240P##	1332P##
3"	F3293	1132P##	1240P##	1332P##
4"	F3294	1140P##	1248P##	1340P##
LS IMP WALL HEAD		APPLICATION: COMMERCIAL & INDUSTRIAL		LS1.5-DH-01 DATE: MARCH 6, 2015

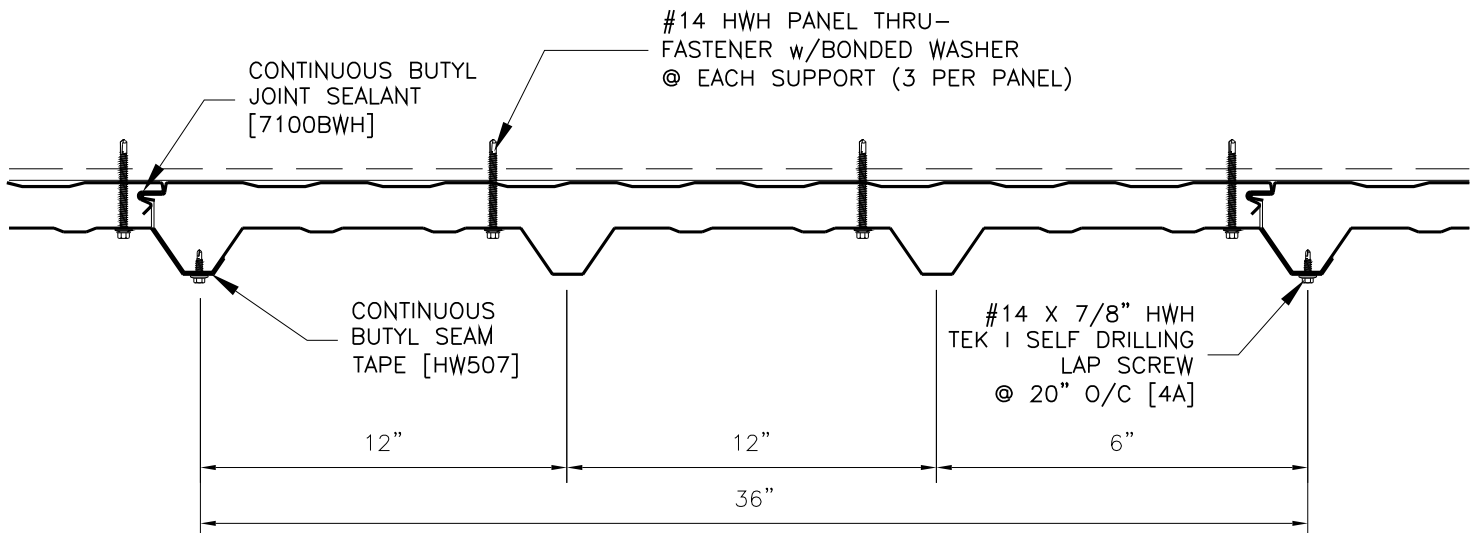


REFER TO SHEET "CI-INFO" FOR ADDITIONAL INFORMATION REGARDING THE APPLICATION OF SEALANTS, FASTENERS, AND CLOSURE MATERIALS.
CONSULT METL-SPAN TO DETERMINE ALLOWABLE LOAD AND SPACING OF ATTACHMENT FASTENERS.

T	JAMB FLASHING	TEK III PANEL FASTENER	TEK V PANEL FASTENER	TYPE B PANEL FASTENER
1.5"	F4036	1124P##	1232P##	1324P##
2"	F4038	1124P##	1232P##	1324P##
2.5"	F4040	1132P##	1240P##	1332P##
3"	F4042	1132P##	1240P##	1332P##
4"	F4044	1140P##	1248P##	1340P##
LS IMP WALL JAMB		APPLICATION: COMMERCIAL & INDUSTRIAL		LS1.5-DJ-01 DATE: March 11, 2015



METHOD OF ATTACHING LS IMP ROOF PANELS



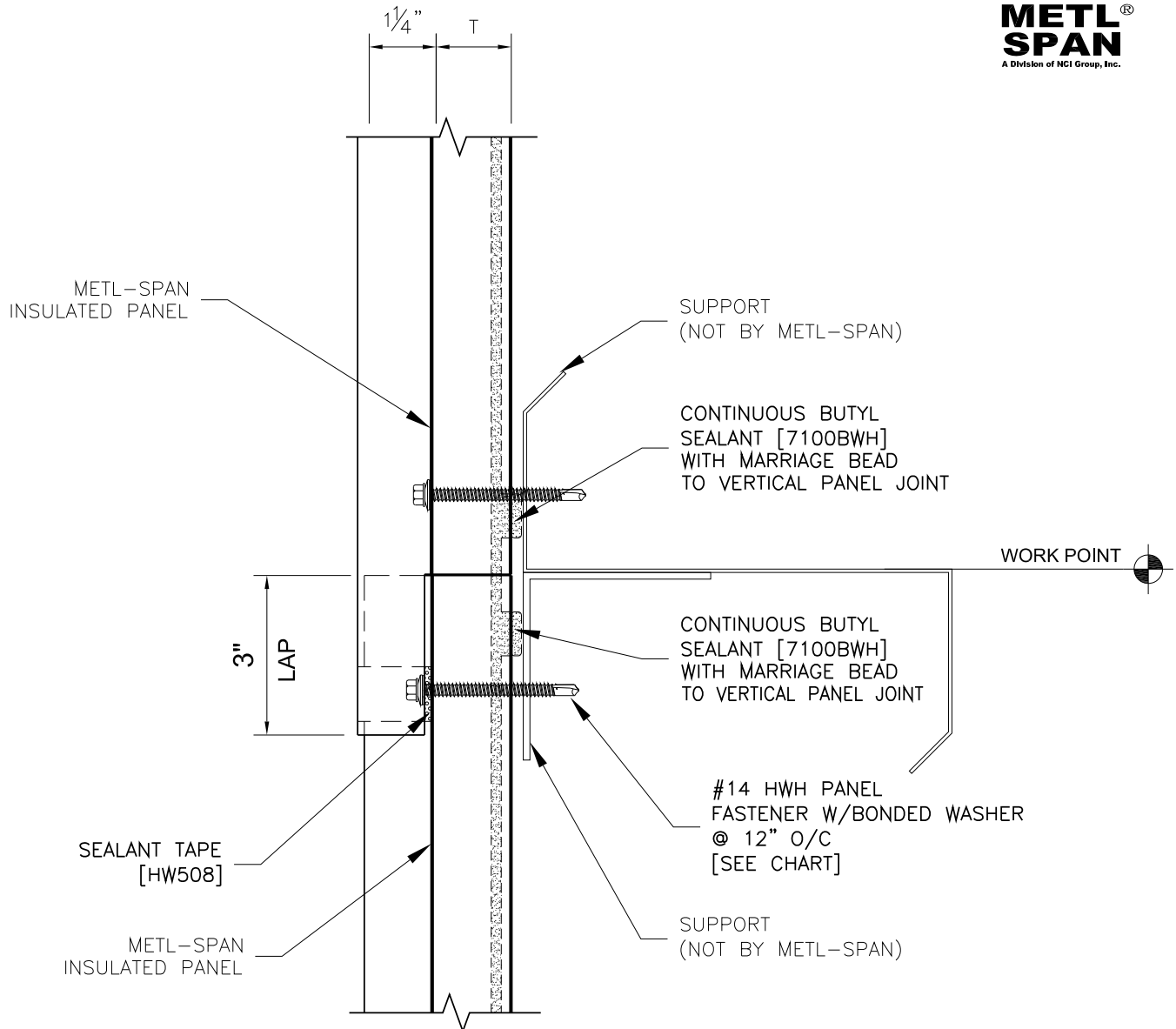
METHOD OF ATTACHING LS IMP WALL PANELS

REFER TO SHEET "CI-INFO" FOR ADDITIONAL INFORMATION REGARDING THE APPLICATION OF SEALANTS, FASTENERS, AND CLOSURE MATERIALS.
CONSULT METL-SPAN TO DETERMINE ALLOWABLE LOAD AND SPACING OF ATTACHMENT FASTENERS.

LS IMP
FASTENING PATTERNS

APPLICATION:
COMMERCIAL & INDUSTRIAL

LS1.5-FSTN-1
DATE: March 11, 2015



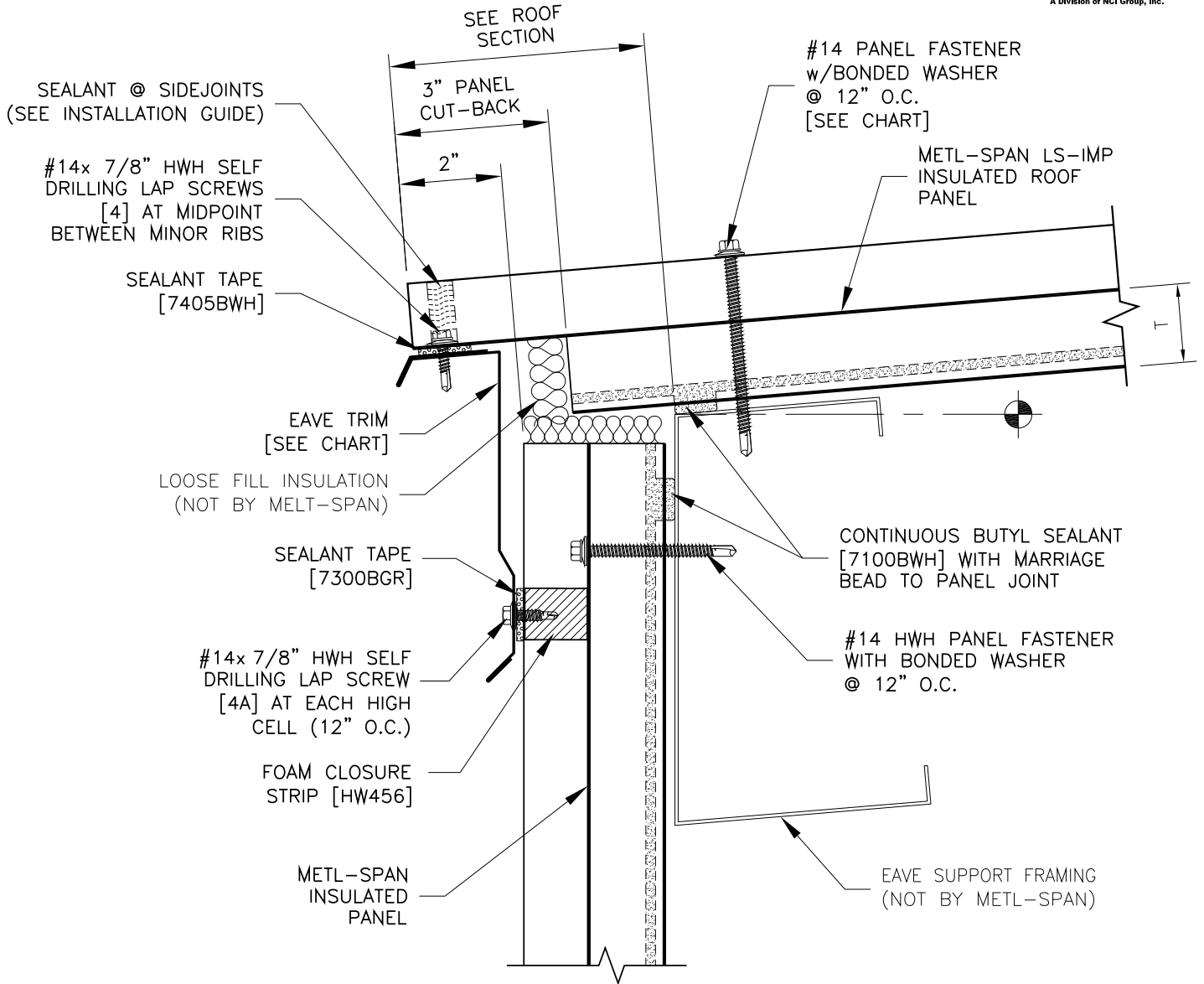
REFER TO SHEET "CI-INFO" FOR ADDITIONAL INFORMATION REGARDING THE APPLICATION OF SEALANTS, FASTENERS, AND CLOSURE MATERIALS.
CONSULT METL-SPAN TO DETERMINE ALLOWABLE LOAD AND SPACING OF ATTACHMENT FASTENERS.

T	TEK III PANEL FASTENER	TEK V PANEL FASTENER	TYPE B PANEL FASTENER
1.5"	1124P##	1232P##	1324P##
2"	1124P##	1232P##	1324P##
2.5"	1132P##	1240P##	1332P##
3"	1132P##	1240P##	1332P##
4"	1140P##	1248P##	1340P##

LS IMP WALL
LAP JOINT

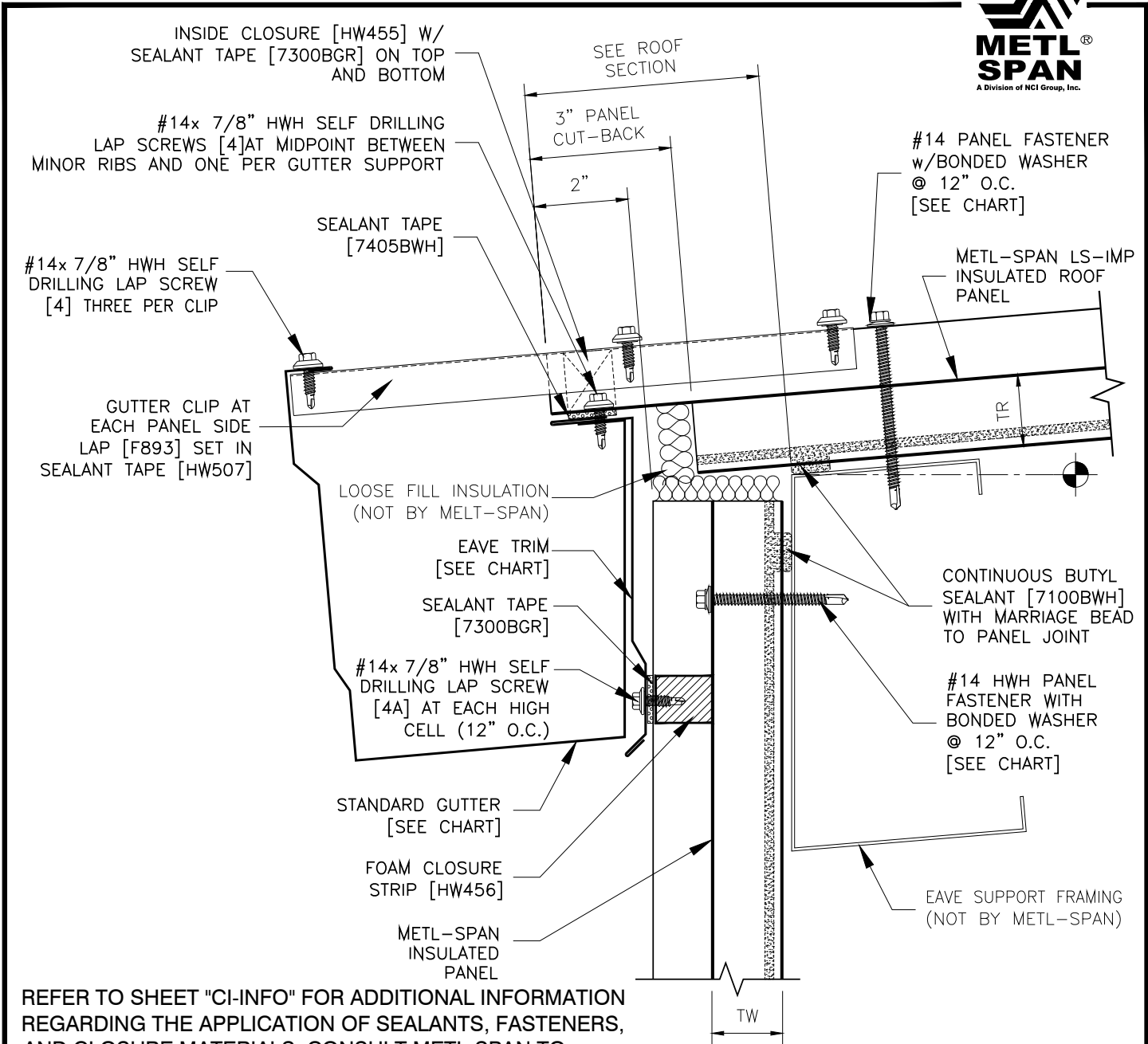
APPLICATION:
COMMERCIAL & INDUSTRIAL

LS1.5-LJ-01
DATE: March 11, 2015



REFER TO SHEET "CI-INFO" FOR ADDITIONAL INFORMATION REGARDING THE APPLICATION OF SEALANTS, FASTENERS, AND CLOSURE MATERIALS.
CONSULT METL-SPAN TO DETERMINE ALLOWABLE LOAD AND SPACING OF ATTACHMENT FASTENERS.

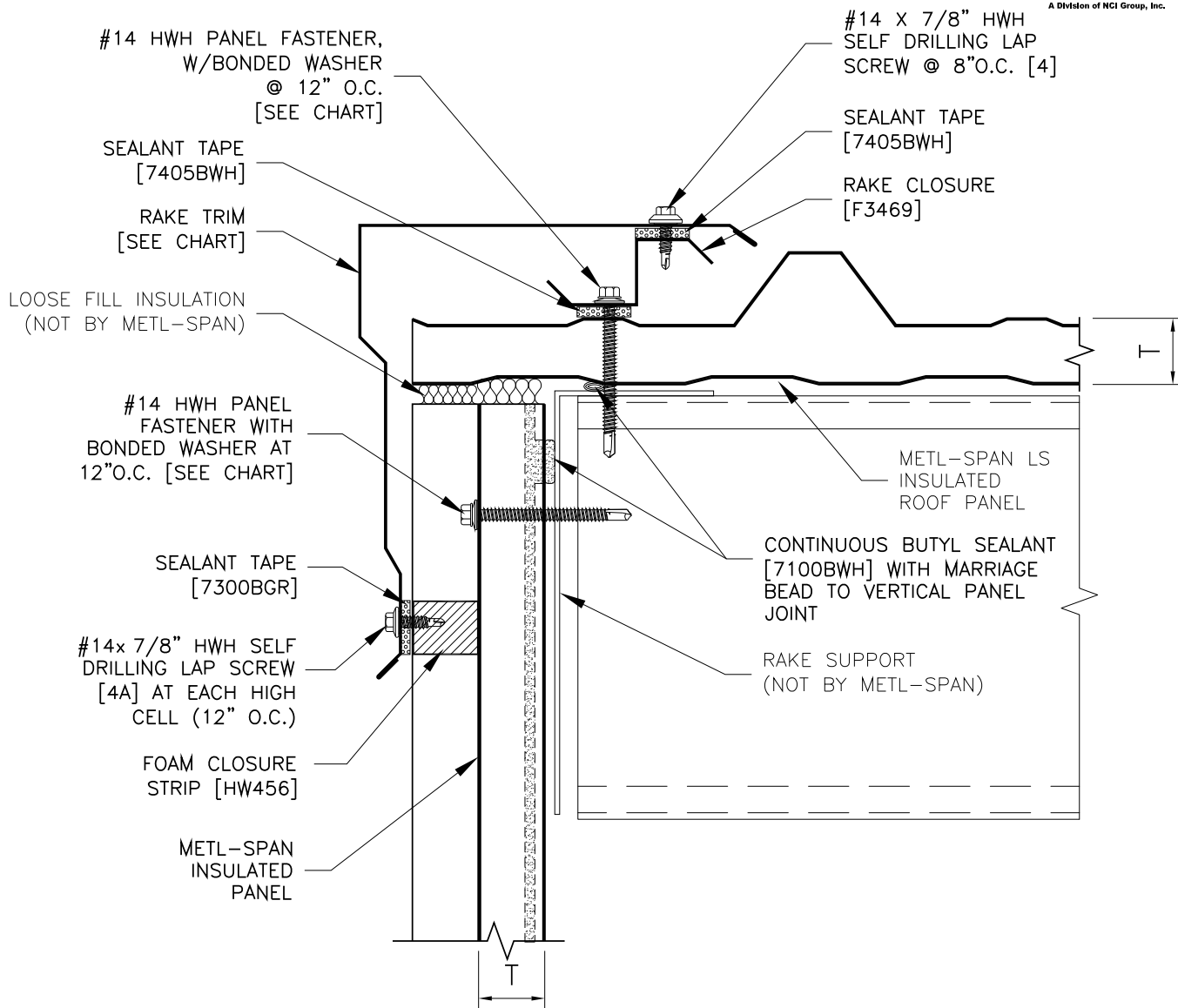
T	LOW EAVE FLASHING	TEK III PANEL FASTENER	TEK V PANEL FASTENER	TYPE B PANEL FASTENER
1.5"	F3317	1132P##	1240P##	1332P##
2"	F3317	1140P##	1248P##	1340P##
2.5"	F3317	1140P##	1248P##	1340P##
3"	F3317	1148P##	1256P##	1348P##
4"	F3318	1156P##	1264P##	1356P##
LS IMP ROOF LOW EAVE		APPLICATION: COMMERCIAL & INDUSTRIAL		LS1.5-R-01 DATE: March 11, 2015



REFER TO SHEET "CI-INFO" FOR ADDITIONAL INFORMATION REGARDING THE APPLICATION OF SEALANTS, FASTENERS, AND CLOSURE MATERIALS. CONSULT METL-SPAN TO DETERMINE ALLOWABLE LOAD AND SPACING OF ATTACHMENT FASTENERS.

TR	GUTTER FLASHING	EAVE FLASHING	ROOF TEK III PANEL FASTENER	ROOF TEK V PANEL FASTENER	ROOF TYPE B PANEL FASTENER	TW	WALL TEK III PANEL FASTENER	WALL TEK V PANEL FASTENER	WALL TYPE B PANEL FASTENER
1.5"	F3320	F3317	1132P##	1240P##	1332P##	1.5"	1124P##	1232P##	1324P##
2"	F3320	F3317	1140P##	1248P##	1340P##	2"	1124P##	1232P##	1324P##
2.5"	F3320	F3317	1140P##	1248P##	1340P##	2.5"	1132P##	1232P##	1332P##
3"	F3320	F3317	1148P##	1256P##	1348P##	3"	1132P##	1240P##	1332P##
4"	F3321	F3318	1156P##	1264P##	1356P##	4"	1140P##	1248P##	1340P##

LS IMP ROOF - LOW EAVE WITH STANDARD GUTTER	APPLICATION: COMMERCIAL & INDUSTRIAL	LS1.5-R-02 DATE: June 17, 2015
---	---	-----------------------------------



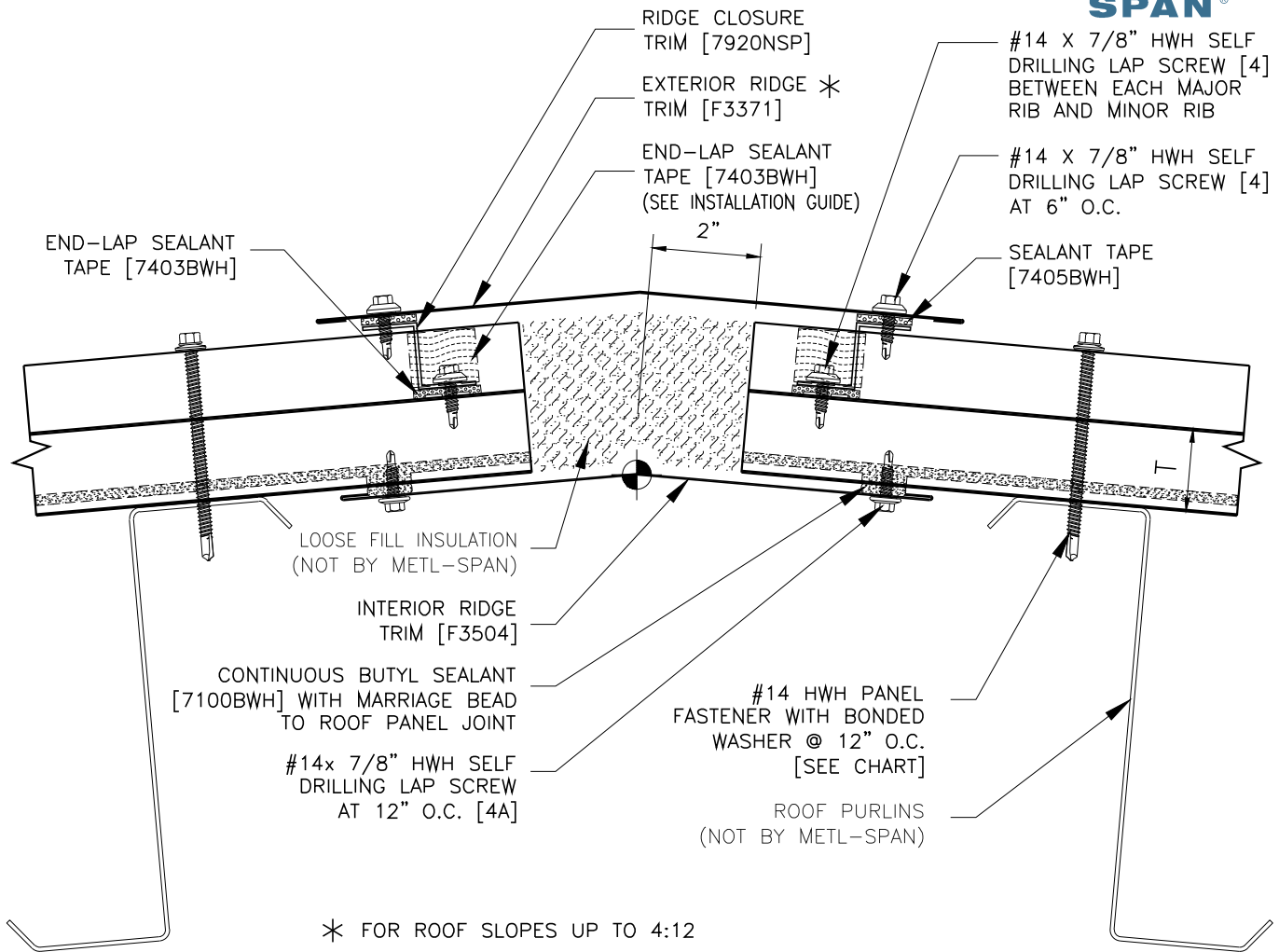
REFER TO SHEET "CI-INFO" FOR ADDITIONAL INFORMATION REGARDING THE APPLICATION OF SEALANTS, FASTENERS, AND CLOSURE MATERIALS.
CONSULT METL-SPAN TO DETERMINE ALLOWABLE LOAD AND SPACING OF ATTACHMENT FASTENERS.

ROOF THICKNESS	WALL THICKNESS	RAKE FLASHING	T	TEK III PANEL FASTENER	TEK V PANEL FASTENER	TYPE B PANEL FASTENER
1.5" & 2" & 2.5" & 3"	1.5" & 2" & 2.5" & 3"	F3430	1.5"	1124PNC	1232PNC	1324PNC
1.5" & 2" & 2.5" & 3"	4"	F3433	2"	1124PNC	1232PNC	1324PNC
4"	1.5" & 2" & 2.5" & 3"	F3431	2.5"	1132PNC	1232PNC	1332PNC
4"	4"	F3434	3"	1132PNC	1240PNC	1332PNC
			4"	1140PNC	1248PNC	1340PNC

LS IMP ROOF
RAKE

APPLICATION:
COMMERCIAL & INDUSTRIAL

LS1.5-R-03
DATE: MARCH 6, 2015



* FOR ROOF SLOPES UP TO 4:12

REFER TO SHEET "CI-INFO" FOR ADDITIONAL INFORMATION REGARDING THE APPLICATION OF SEALANTS, FASTENERS, AND CLOSURE MATERIALS. CONSULT METL-SPAN TO DETERMINE ALLOWABLE LOAD AND SPACING OF ATTACHMENT FASTENERS.

T	TEK III PANEL FASTENER	TEK V PANEL FASTENER	TYPE B PANEL FASTENER
1.5"	1132P##	1240P##	1332P##
2"	1140P##	1248P##	1340P##
2.5"	1140P##	1248P##	1340P##
3"	1148P##	1256P##	1348P##
4"	1156P##	1264P##	1356P##

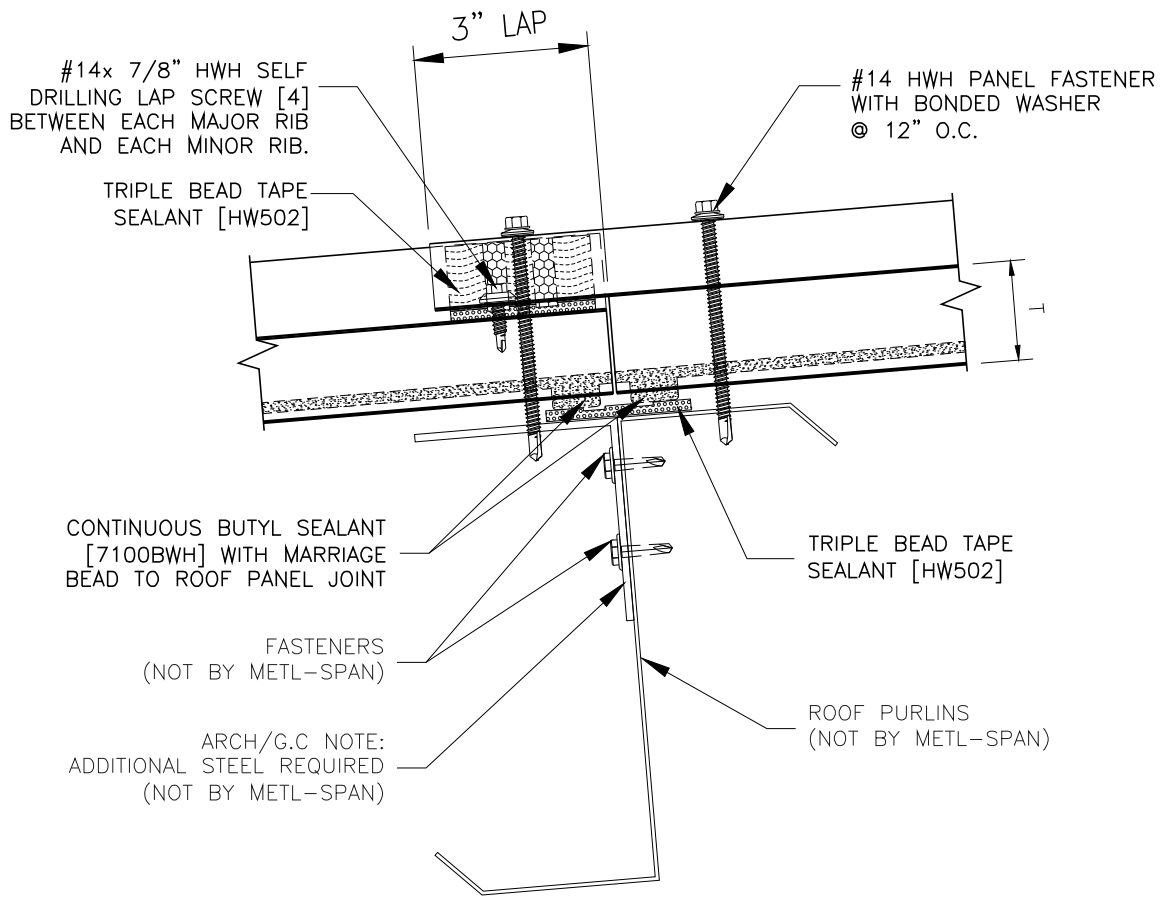
LS IMP ROOF RIDGE

APPLICATION:
COMMERCIAL & INDUSTRIAL

LS1.5-R-04

© 2016 Metl-Scan, and NCI Building Systems company. All rights reserved.

DATE: Nov. 9, 2016



REFER TO SHEET "CI-INFO" FOR ADDITIONAL INFORMATION REGARDING THE APPLICATION OF SEALANTS, FASTENERS, AND CLOSURE MATERIALS.
CONSULT METL-SPAN TO DETERMINE ALLOWABLE LOAD AND SPACING OF ATTACHMENT FASTENERS.

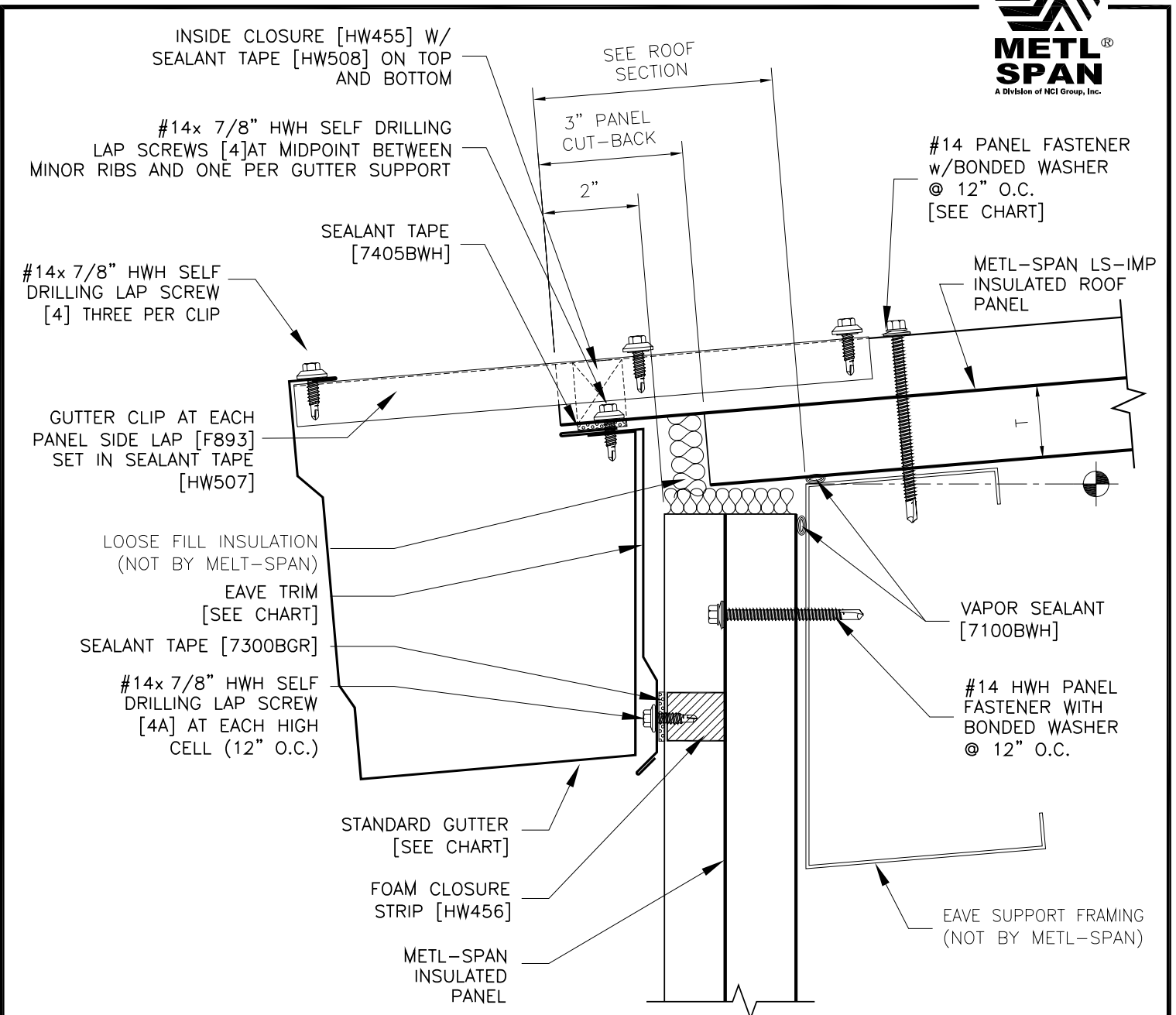
T	TEK III PANEL FASTENER	TEK V PANEL FASTENER	TYPE B PANEL FASTENER
1.5"	1132P##	1240P##	1332P##
2"	1140P##	1248P##	1340P##
2.5"	1140P##	1248P##	1340P##
3"	1148P##	1256P##	1348P##
4"	1156P##	1264P##	1356P##

LS IMP ROOF
END LAP

APPLICATION:
COMMERCIAL & INDUSTRIAL

LS1.5-R-05

DATE: Nov. 9, 2016

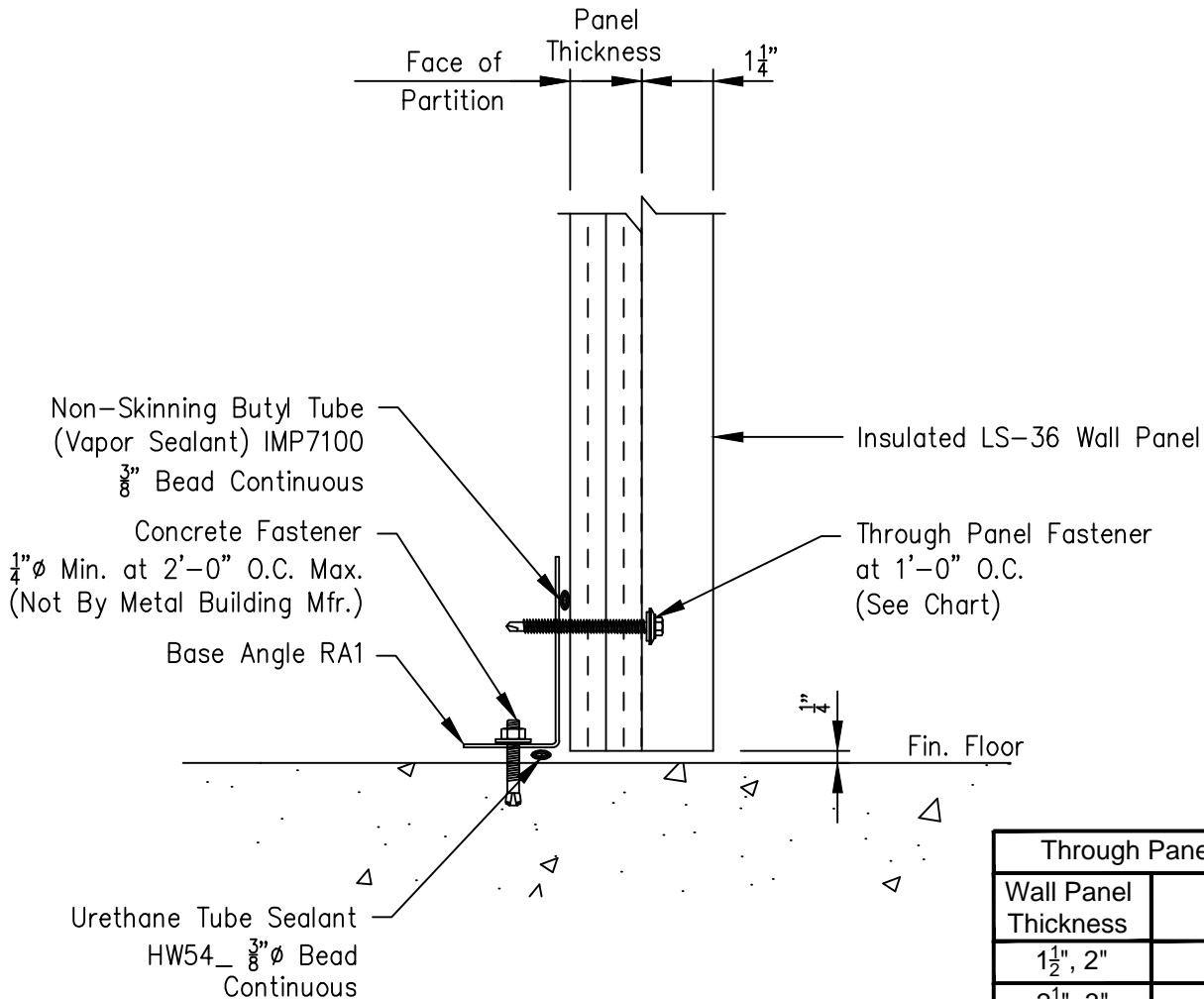
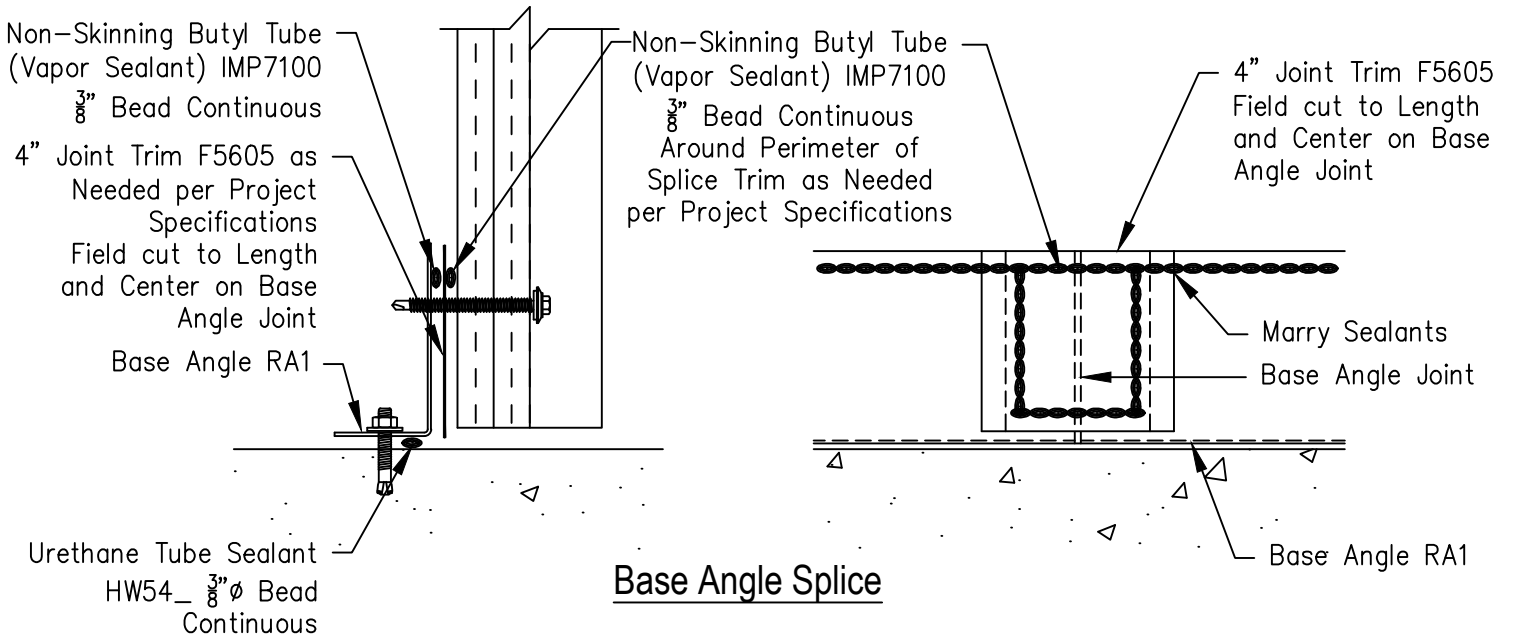


REFER TO SHEET "CI-INFO" FOR ADDITIONAL INFORMATION REGARDING THE APPLICATION OF SEALANTS, FASTENERS, AND CLOSURE MATERIALS.
 CONSULT METL-SPAN TO DETERMINE ALLOWABLE LOAD AND SPACING OF ATTACHMENT FASTENERS.

T	GUTTER FLASHING	EAVE FLASHING	TEK III PANEL FASTENER	TEK V PANEL FASTENER	TYPE B PANEL FASTENER
1.5"	F3320	F3314	1132P##	1240P##	1332P##
2"	F3320	F3314	1140P##	1248P##	1340P##
2.5"	F3320	F3314	1140P##	1248P##	1340P##
3"	F3320	F3314	1148P##	1256P##	1348P##
4"	F3321	F3315	1156P##	1264P##	1356P##

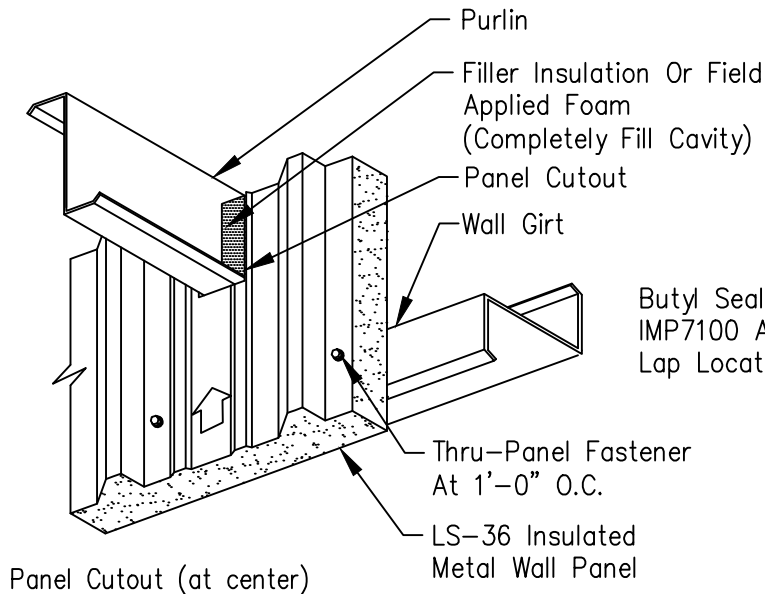
LS IMP ROOF - LOW EAVE WITH STANDARD GUTTER	APPLICATION: COMMERCIAL & INDUSTRIAL	LS1.5-R-07 DATE: JAN. 14, 2014
---	---	-----------------------------------

Insulated LS-36 Wall Panel Partition Base Detail

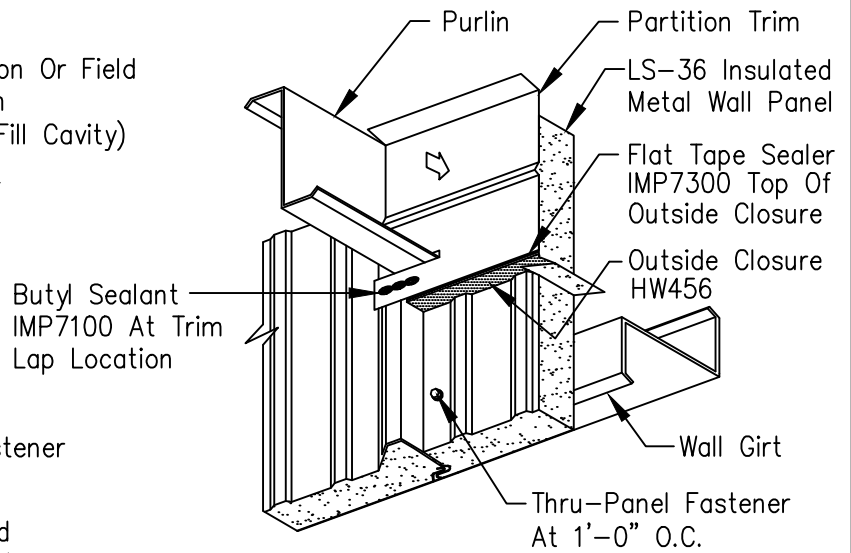


Through Panel Fastener Chart	
Wall Panel Thickness	Fastener Part Number
$1\frac{1}{2}$ ", 2"	Fastener #1124
$2\frac{1}{2}$ ", 3"	Fastener #1132
4"	Fastener #1140
5"	Fastener #1148
6"	Fastener #1156

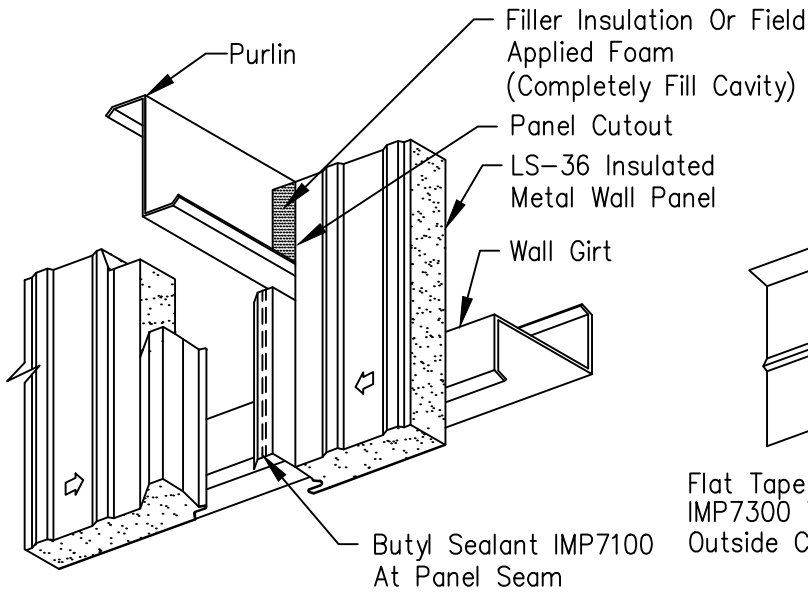
Purlin Extension With LS-36 Insulated Metal Wall Panels



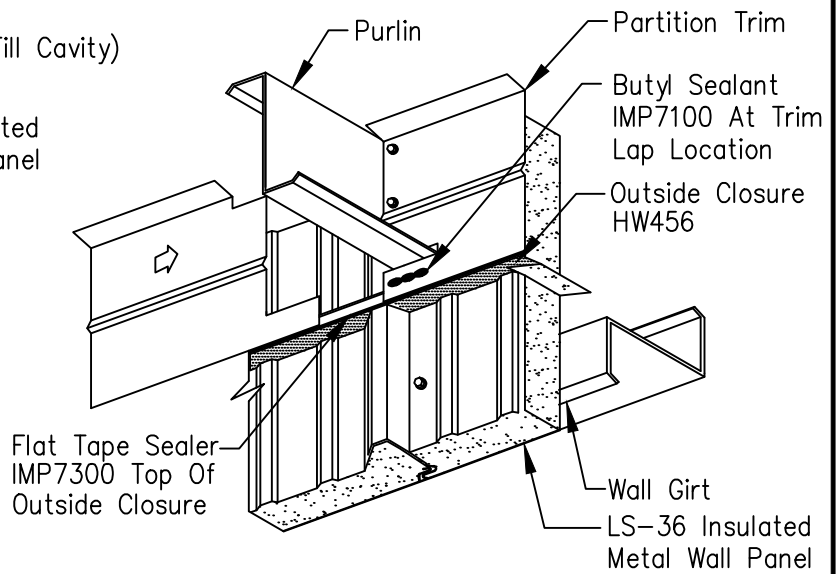
Panel Cutout (at center)



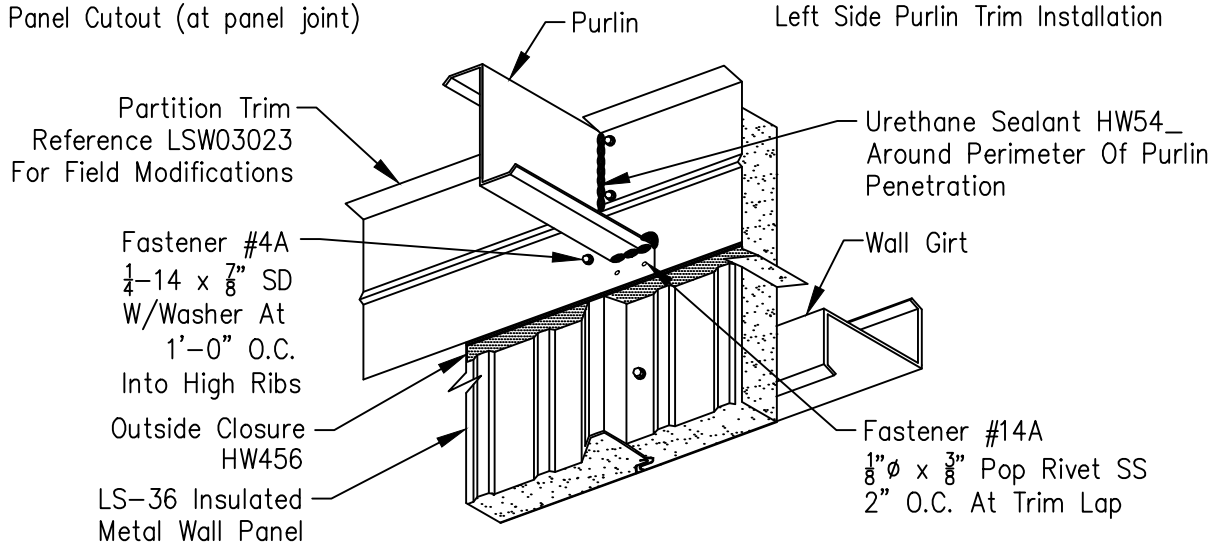
Right Side Purlin Trim Installation



Panel Cutout (at panel joint)

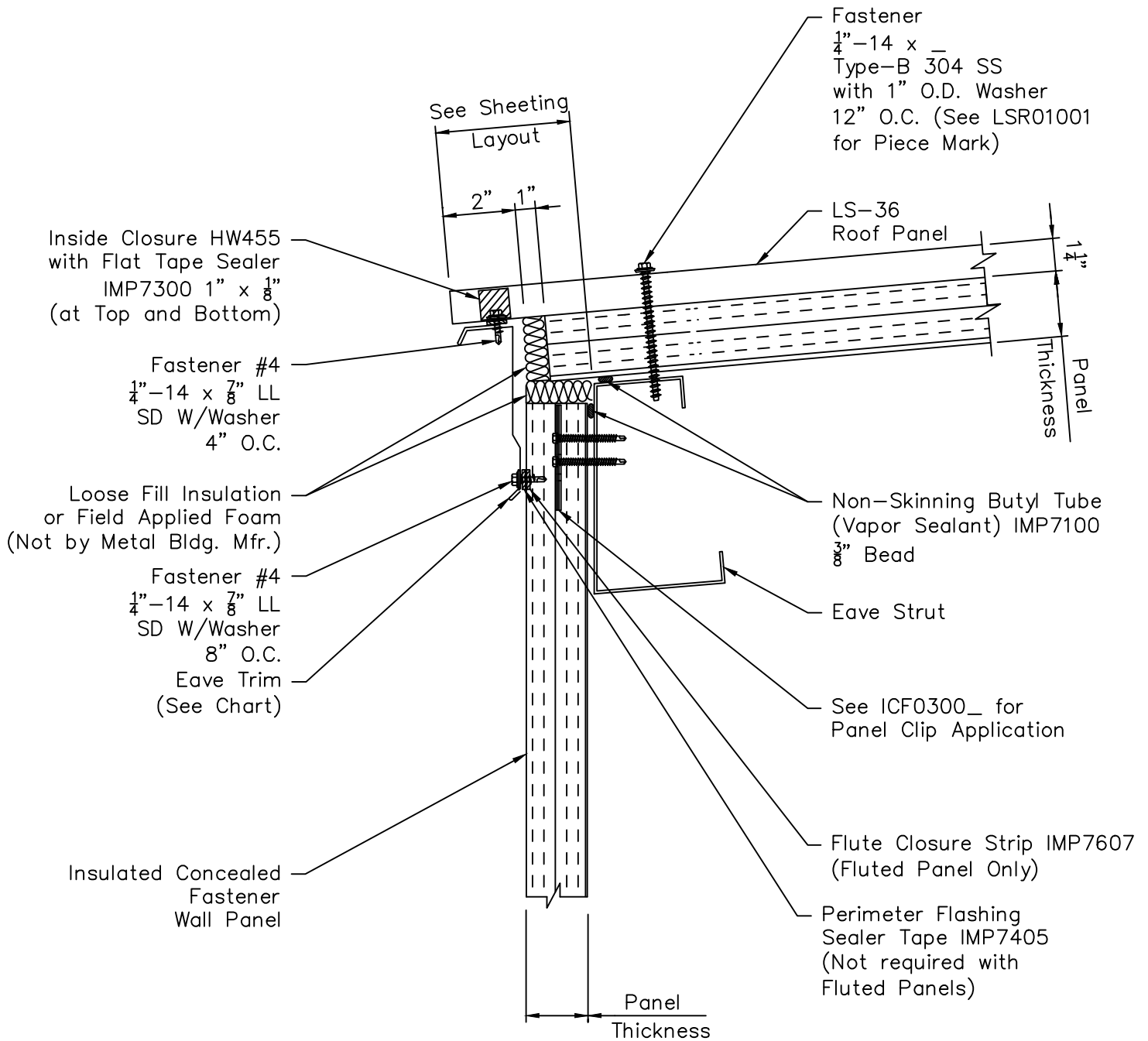


Left Side Purlin Trim Installation



Penetration Perimeter Seal

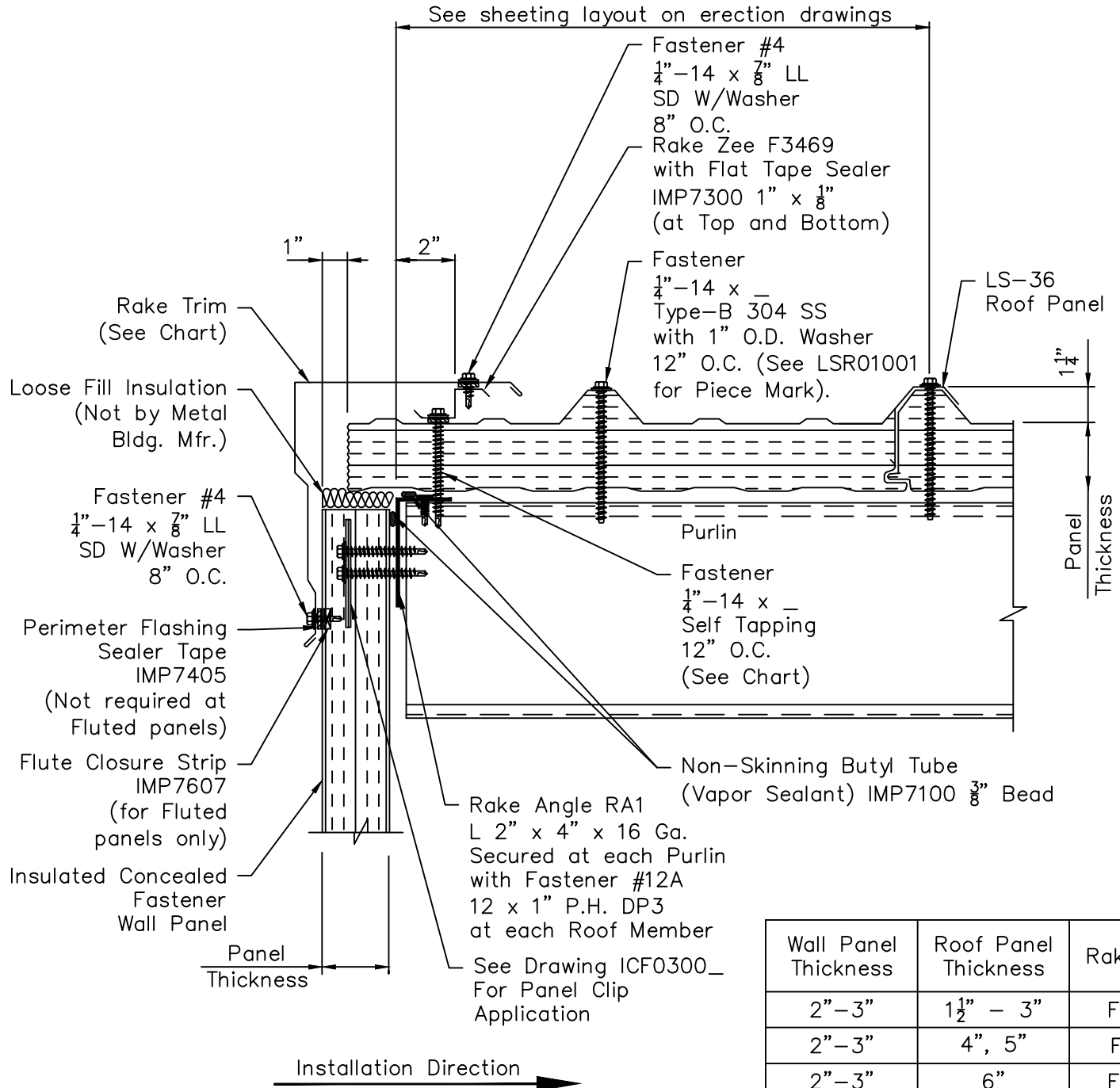
LS-36 Roof - Insulated Concealed Fastener Wall With Eave Trim



Roof Panel Thickness	Eave Trim
1 1/2" - 3"	F3317
4", 5"	F3318
6"	F3319
Parametric	F3418

Erector to Remove Roof Panel Foam & Interior Skin as Shown on LSR01005 to Accommodate the Panel Overhang as Shown on This Detail.

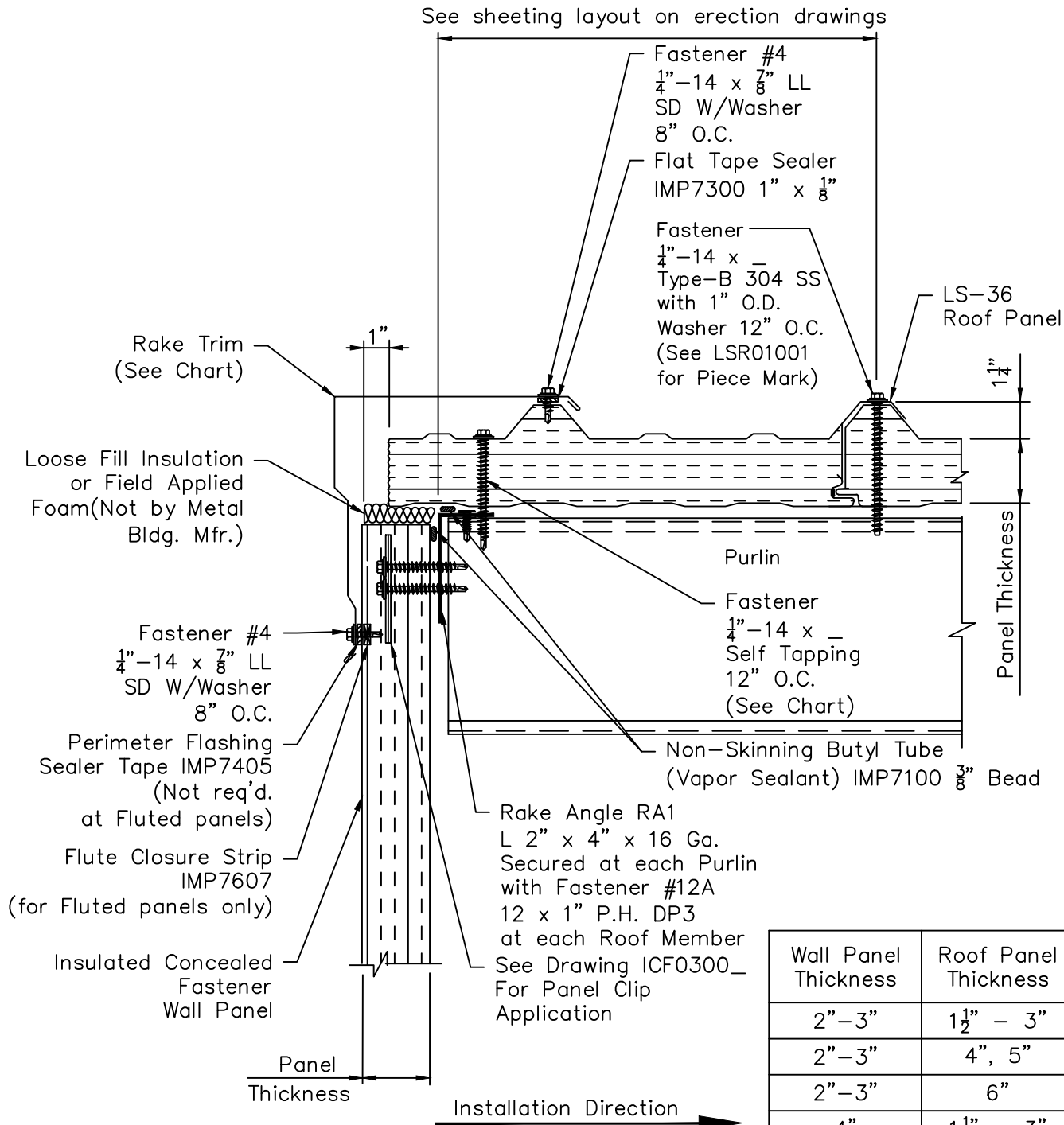
LS-36 Roof - Insulated Concealed Fastener Wall Standard Rake Detail



Roof Panel Thickness	Through Panel Fastener
1 1/2"	Fastener #1124
2"	Fastener #1124
2 1/2"	Fastener #1132
3"	Fastener #1132
4"	Fastener #1140
5"	Fastener #1148
6"	Fastener #1156

Wall Panel Thickness	Roof Panel Thickness	Rake Trim
2"-3"	1 1/2" - 3"	F3430
2"-3"	4", 5"	F3431
2"-3"	6"	F3432
4"	1 1/2" - 3"	F3433
4"	4", 5"	F3434
4"	6"	F3435
5"	1 1/2" - 3"	F3433
5"	4", 5"	F3434
5"	6"	F3435
6"	1 1/2" - 3"	F3330
6"	4", 5"	F3331
6"	6"	F3332
Parametric		F3439

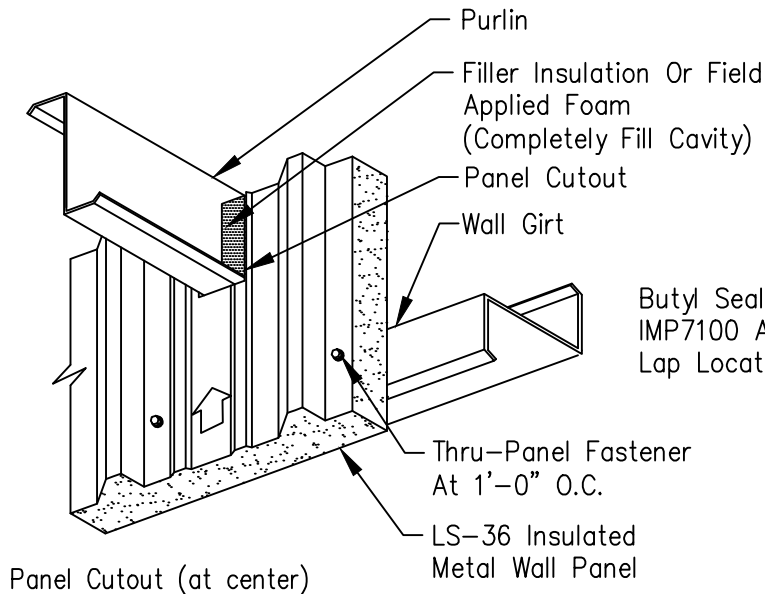
LS-36 Roof - Insulated Concealed Fastener Wall Alternate Rake Detail



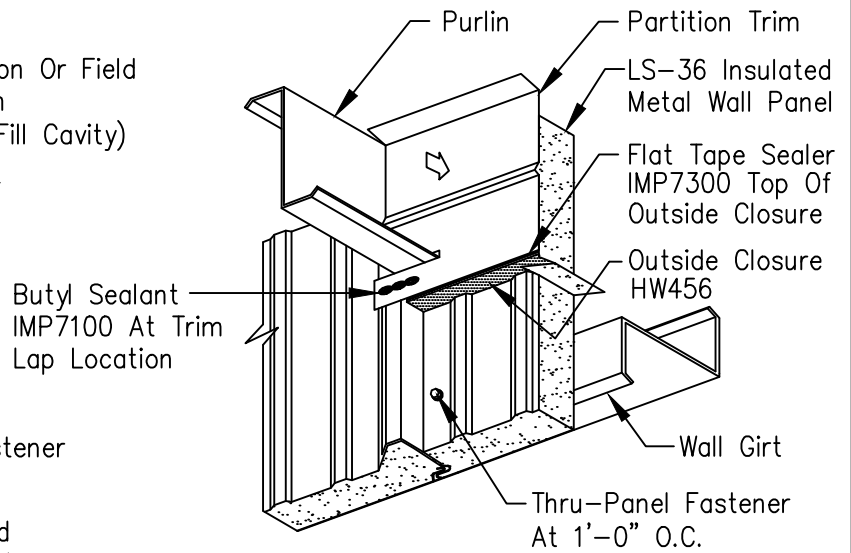
Roof Panel Thickness	Through Panel Fastener
1 1/2"	Fastener #1124
2"	Fastener #1124
2 1/2"	Fastener #1132
3"	Fastener #1132
4"	Fastener #1140
5"	Fastener #1148
6"	Fastener #1156

Wall Panel Thickness	Roof Panel Thickness	Rake Trim
2"-3"	1 1/2" - 3"	F3430
2"-3"	4", 5"	F3431
2"-3"	6"	F3432
4"	1 1/2" - 3"	F3433
4"	4", 5"	F3434
4"	6"	F3435
5"	1 1/2" - 3"	F3330
5"	4", 5"	F3331
5"	6"	F3332
6"	1 1/2" - 3"	F3333
6"	4", 5"	F3334
6"	6"	F3335
Parametric		F3439

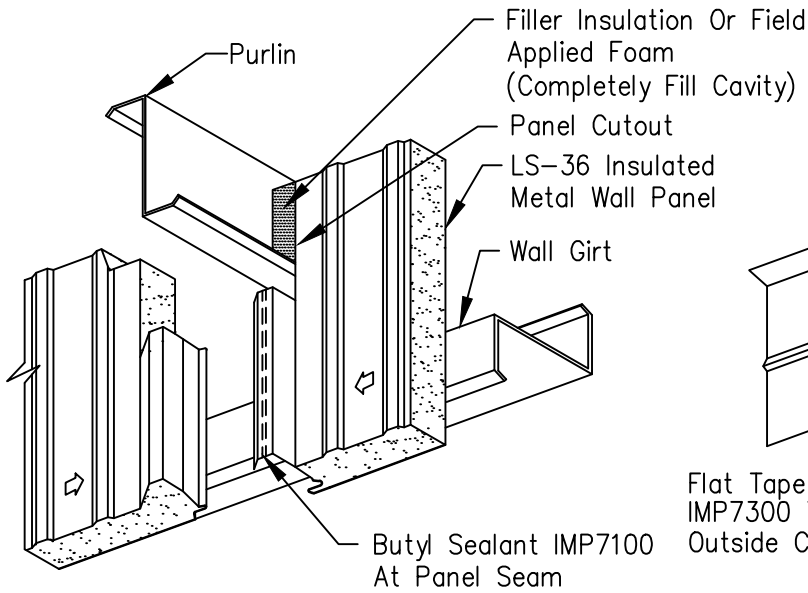
Purlin Extension With LS-36 Insulated Metal Wall Panels



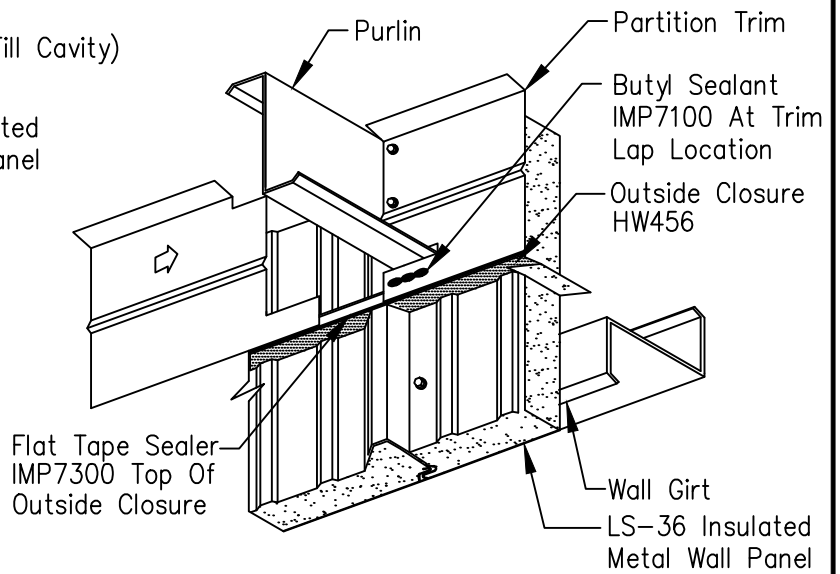
Panel Cutout (at center)



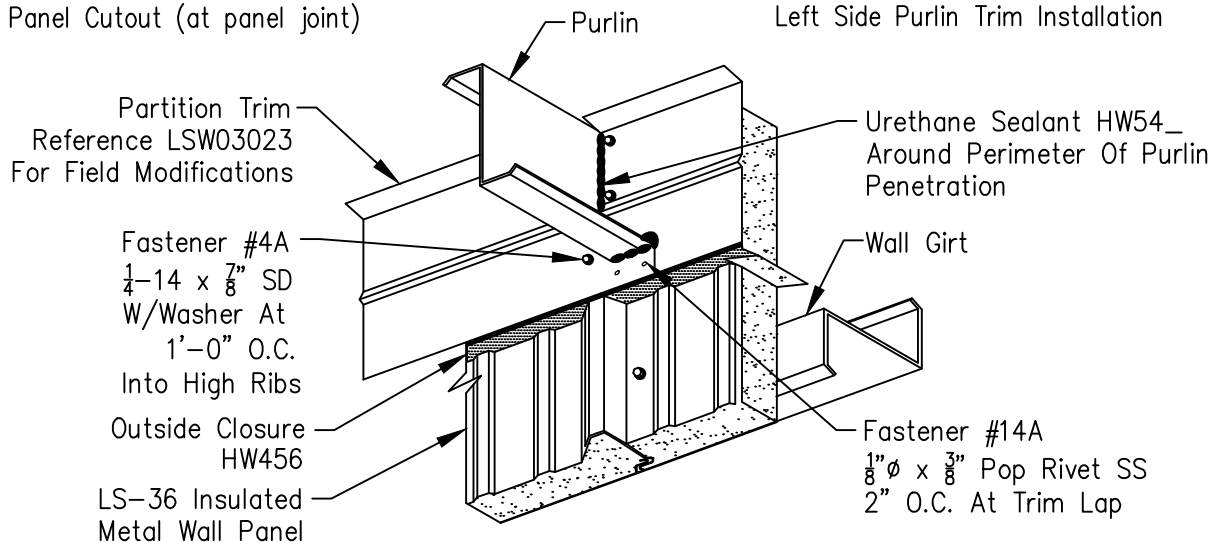
Right Side Purlin Trim Installation



Panel Cutout (at panel joint)

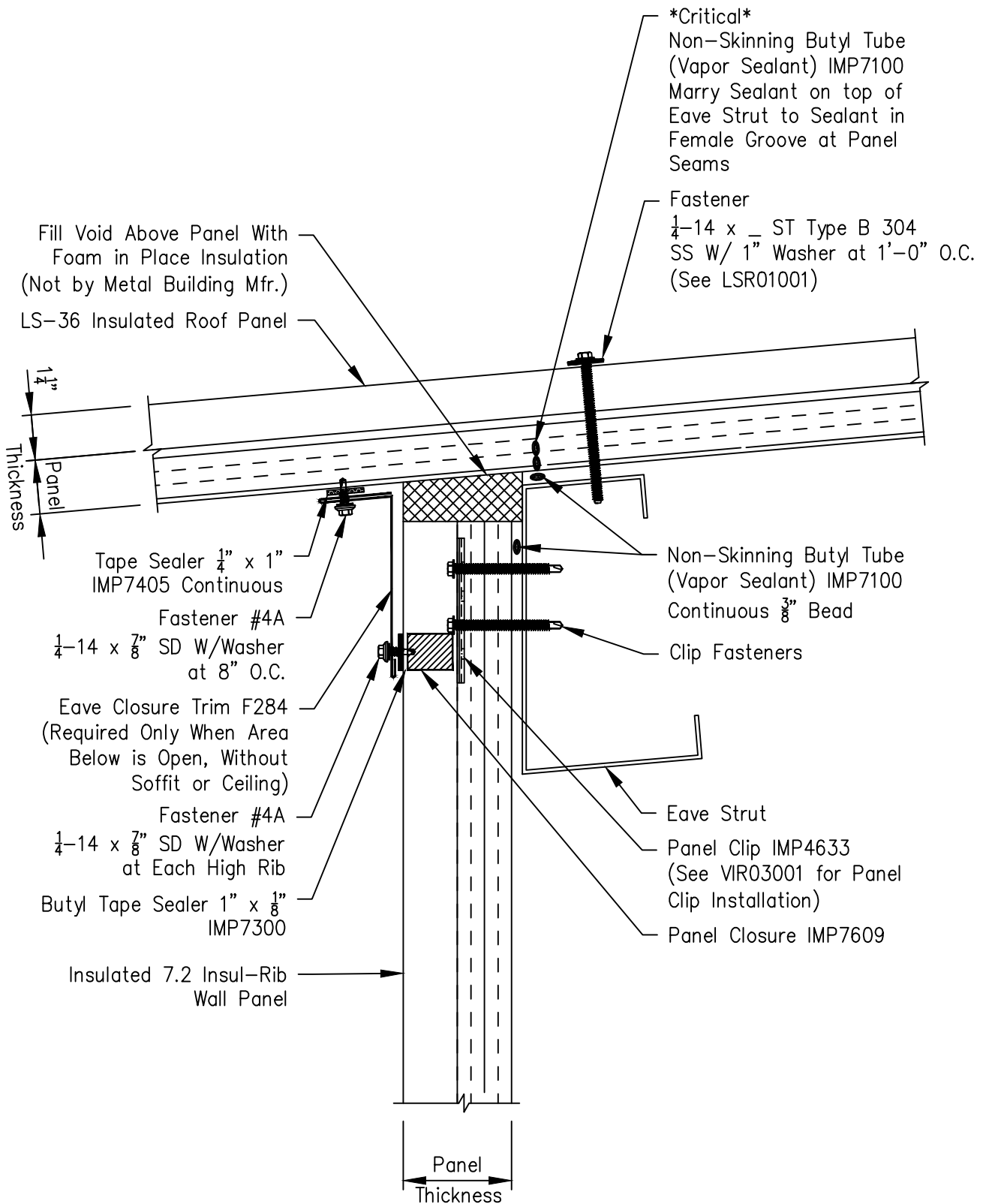


Left Side Purlin Trim Installation

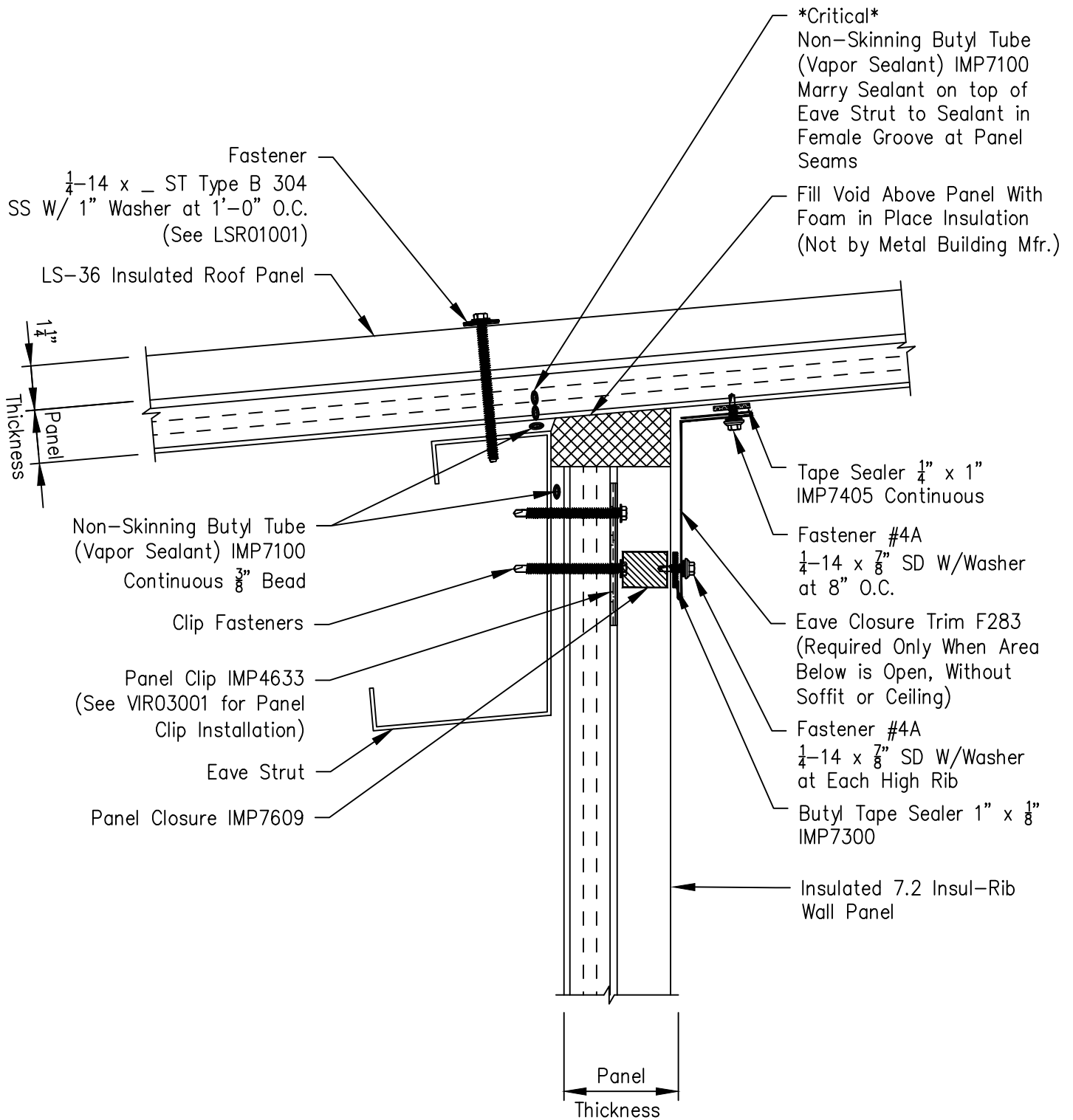


Penetration Perimeter Seal

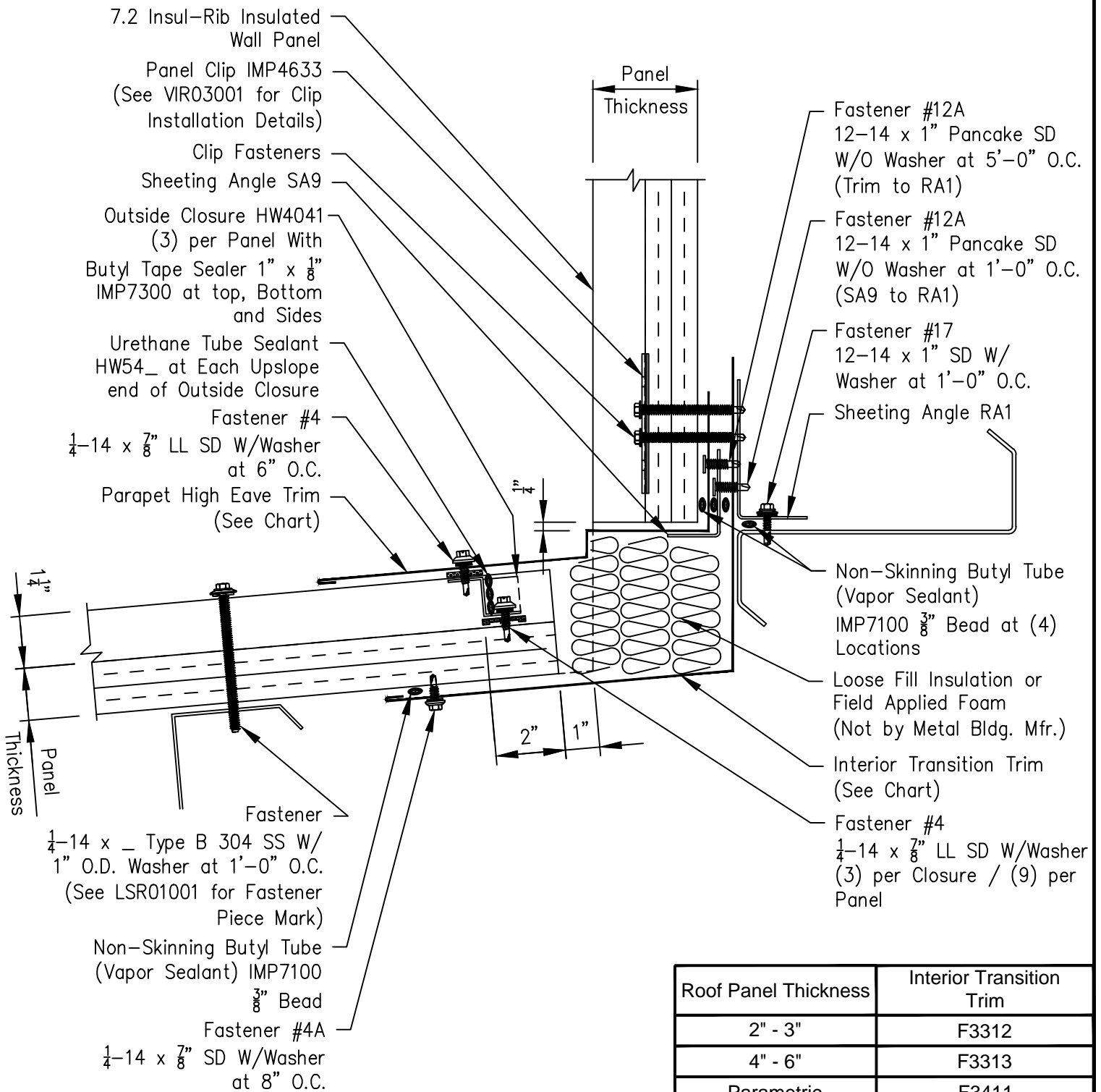
LS-36 Roof With 7.2 Insul-Rib Wall Panel Roof Extension At Low Eave



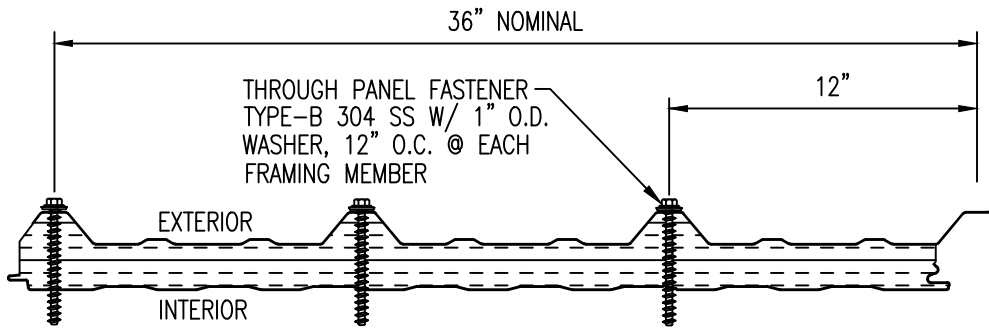
LS-36 Roof With 7.2 Insul-Rib Wall Panel Roof Extension At High Eave



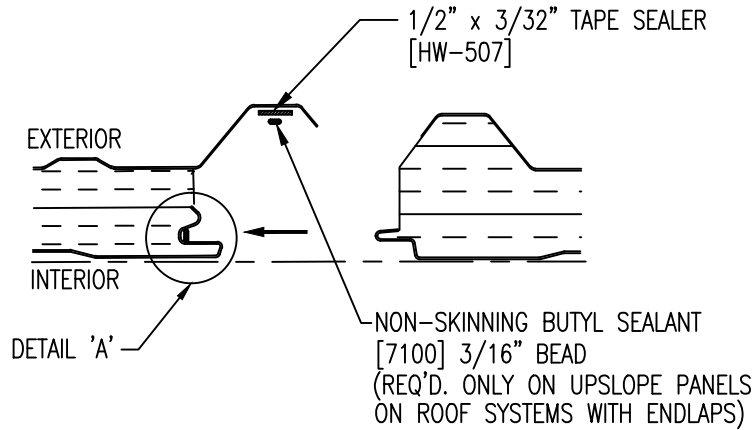
LS-36 Roof - 7.2 Insul-Rib Wall Below Eave Tie-In - Common Wall Open



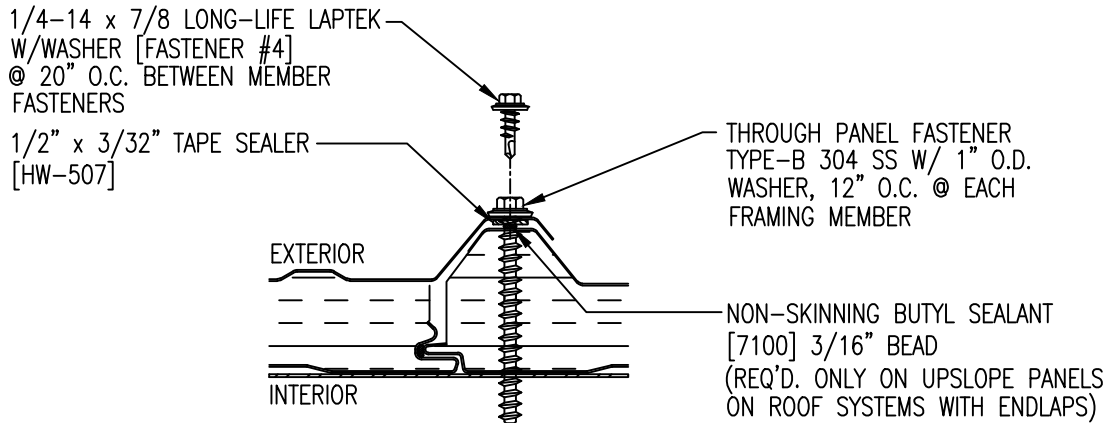
Roof Panel Thickness		Interior Transition Trim
2" - 3"		F3312
4" - 6"		F3313
Parametric		F3411
Wall Panel Thickness		Parapet High Eave Trim
Roof Slope Up To 4:12	2 1/2"	F3739
	3"	F3740
	4"	F3742
	5"	F3743
Parametric		F3497



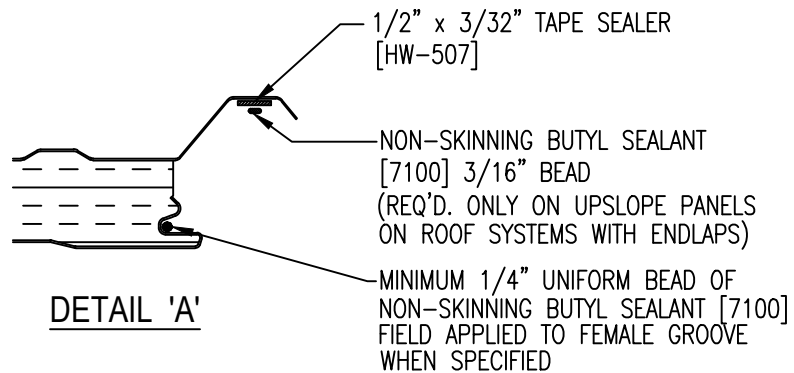
LS-36TM INSULATED ROOF PANEL



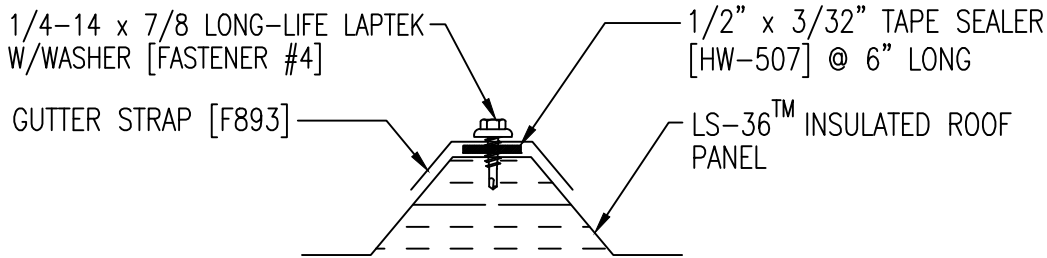
INSTALLATION DIRECTION



SIDE LAP FASTENERS

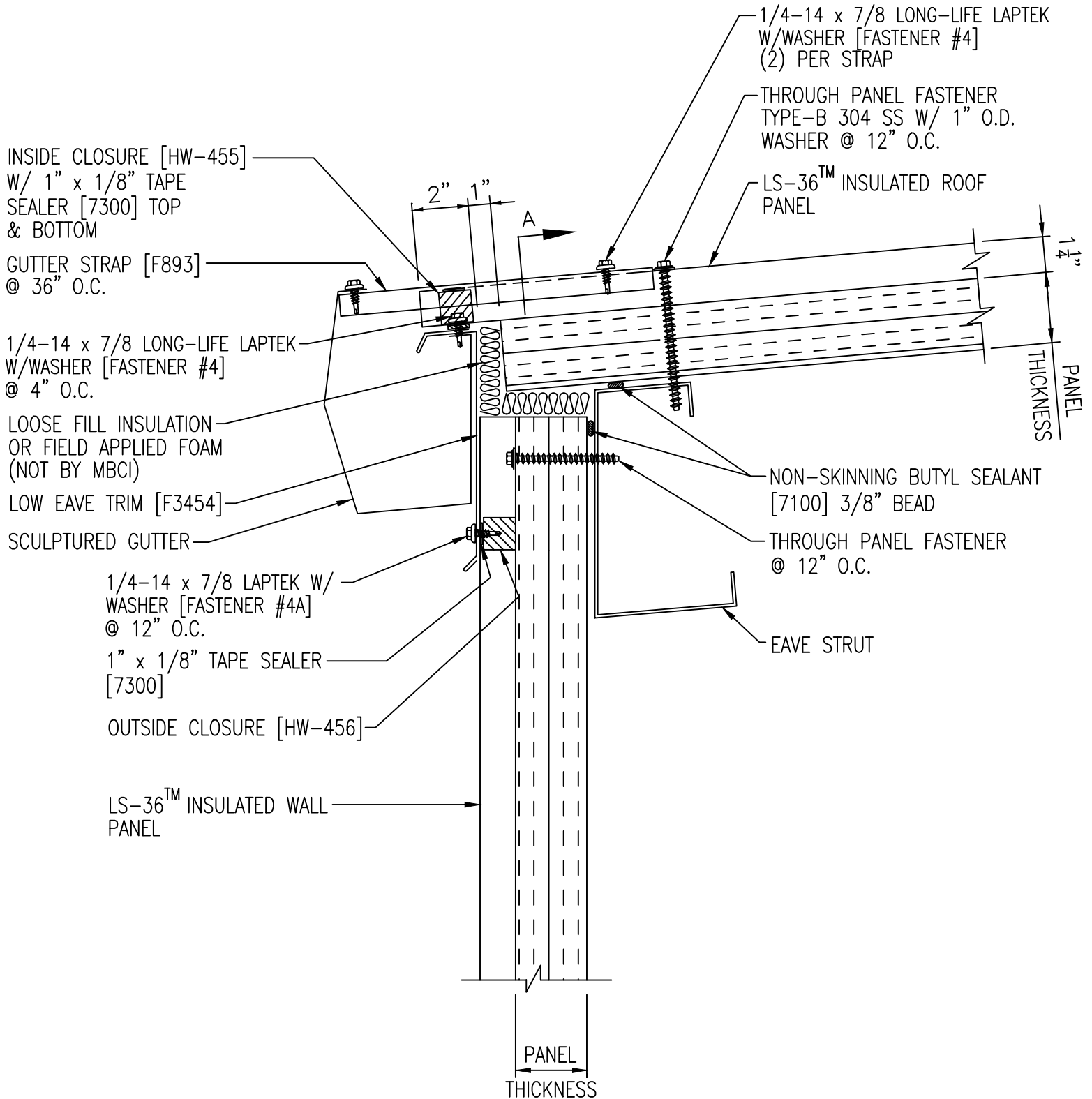


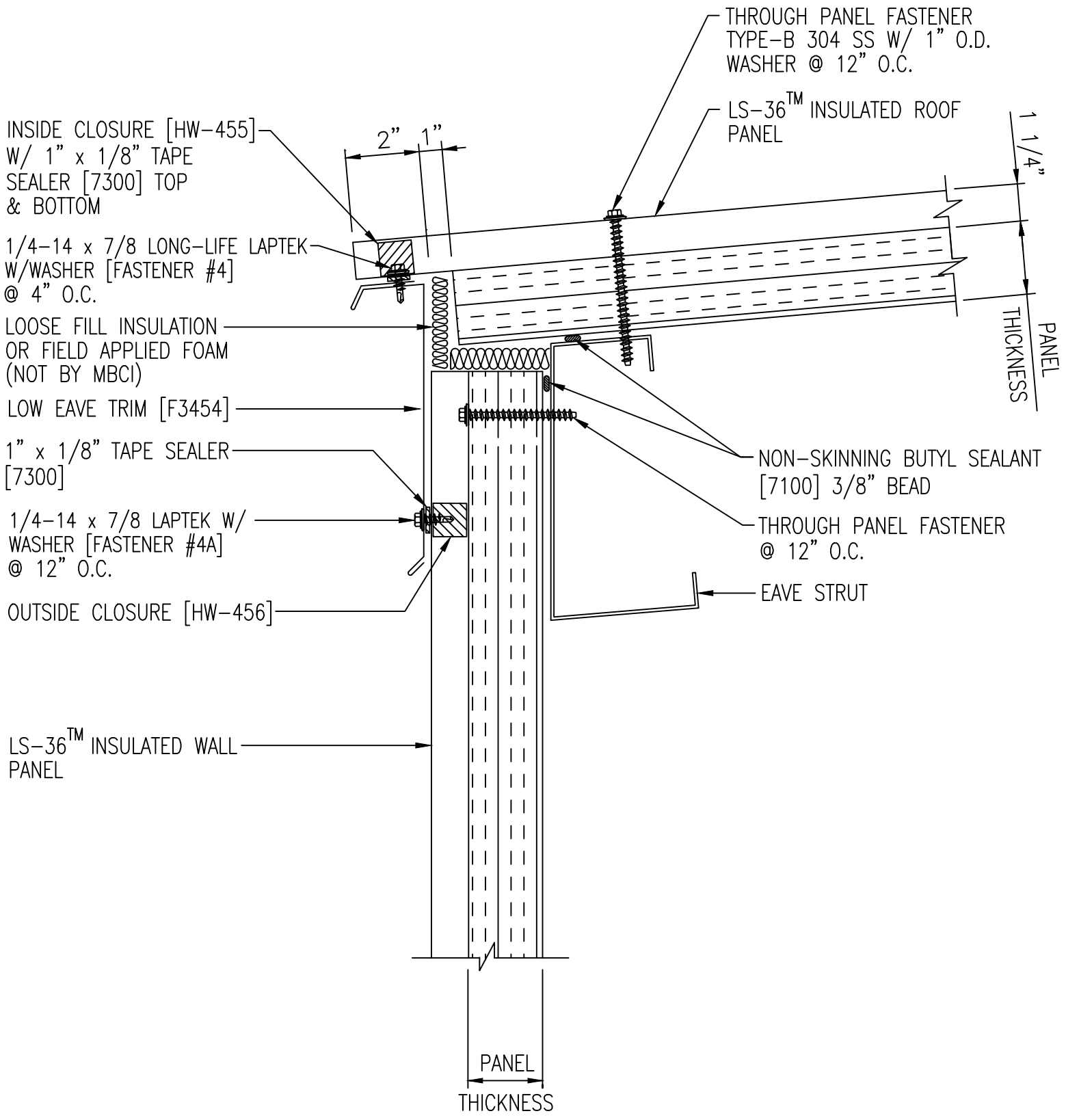
JOINT SEALANT APPLICATION

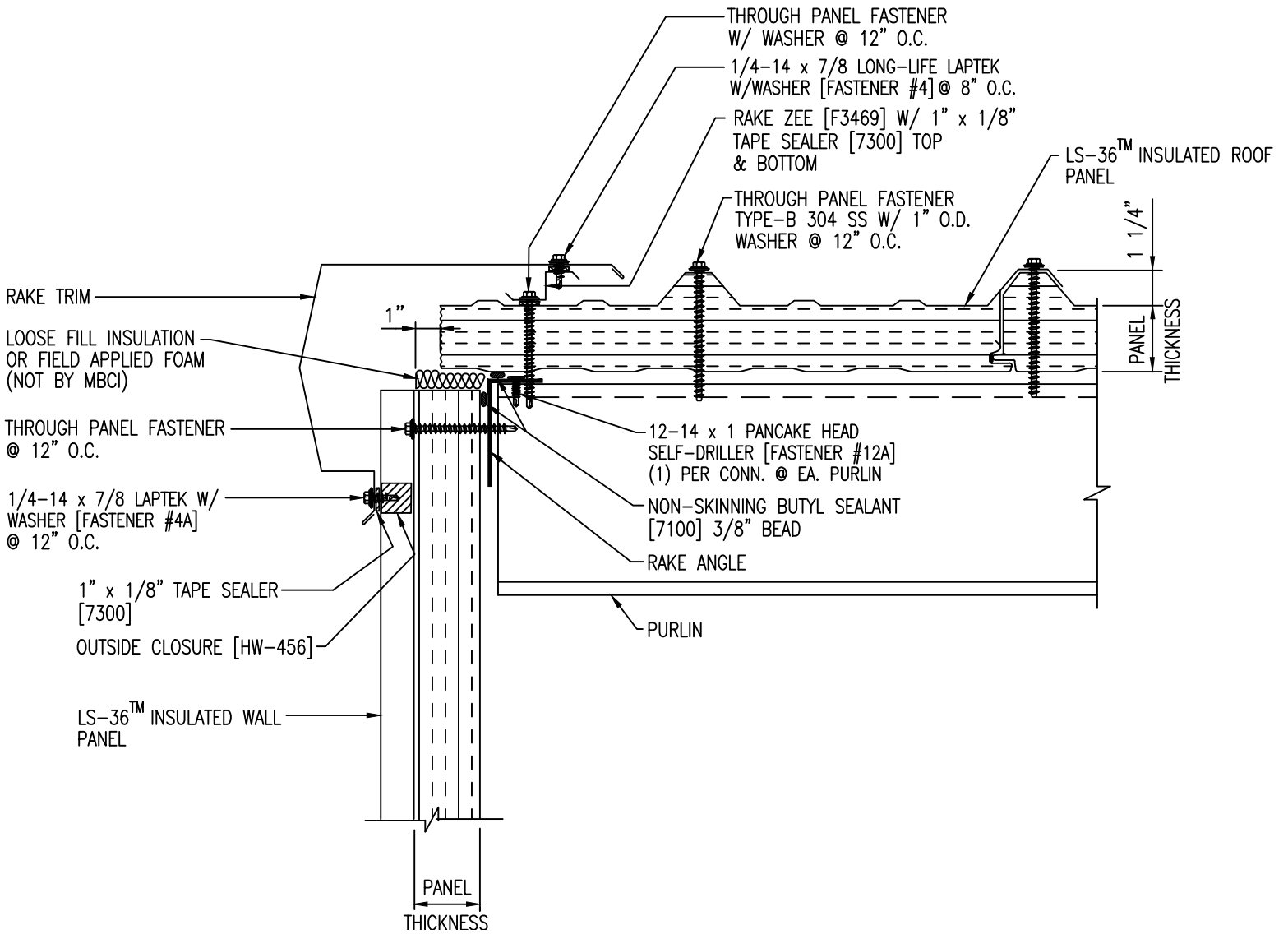


SECTION 'A'

12







12

12

1/4-14 x 7/8 LAPTEK W/WASHER
[FASTENER #4A] (3) PER CLOSURE
(9) PER PANEL TOTAL

URETHANE TUBE SEALANT EACH END
@ UPSLOPE SIDE OF CLOSURE
TO FILL VOIDS AS NECESSARY

1/4-14 x 7/8 LONG-LIFE LAPTEK
W/WASHER [FASTENER #4] @ 6" O.C.

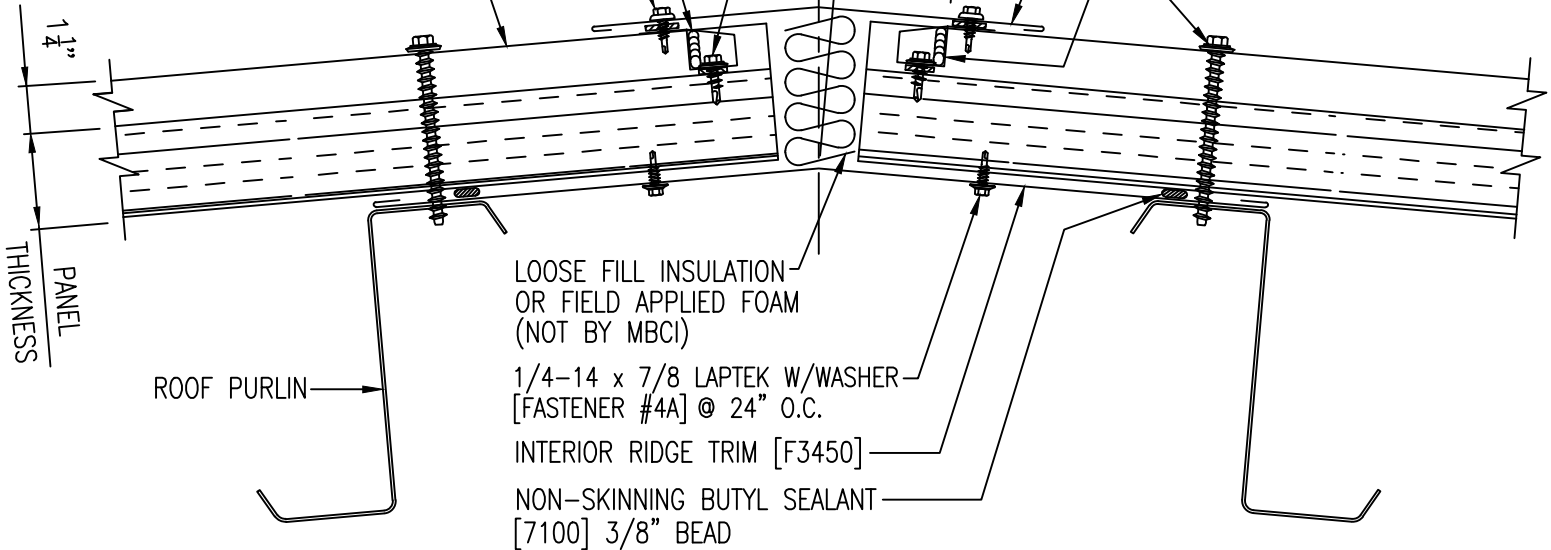
LS-36™ INSULATED ROOF
PANEL

RIDGE TRIM [F3445]

OUTSIDE CLOSURE [HW4041]
(3) PER PANEL W/
1" x 1/8" TAPE SEALER
[7300] ON TOP, BOTTOM,
& BOTH SIDES OF CLOSURE

THROUGH PANEL FASTENER
TYPE-B 304 SS W/ 1" O.D.
WASHER @ 12" O.C.

1" 2"



PANEL
THICKNESS

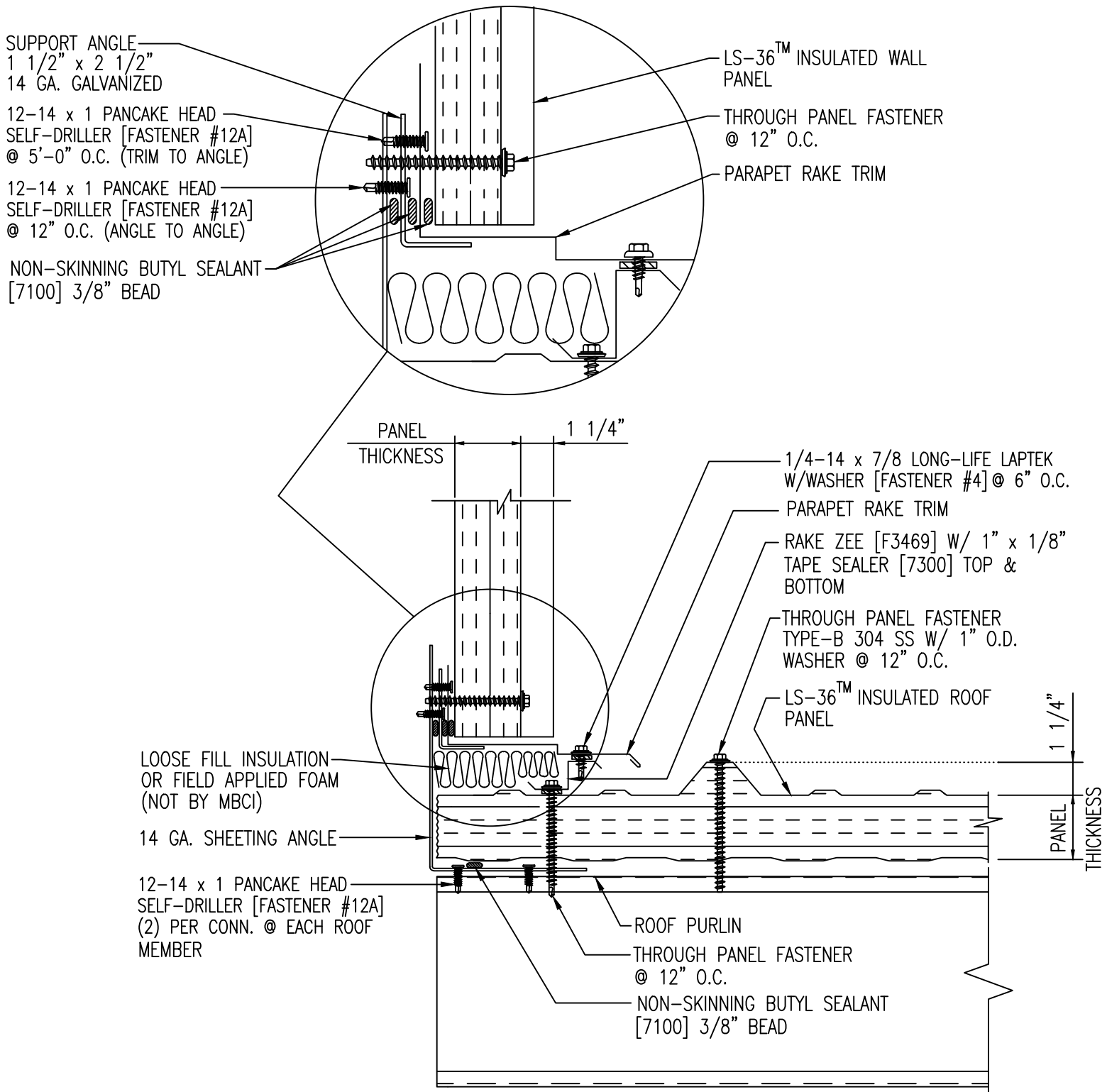
ROOF PURLIN

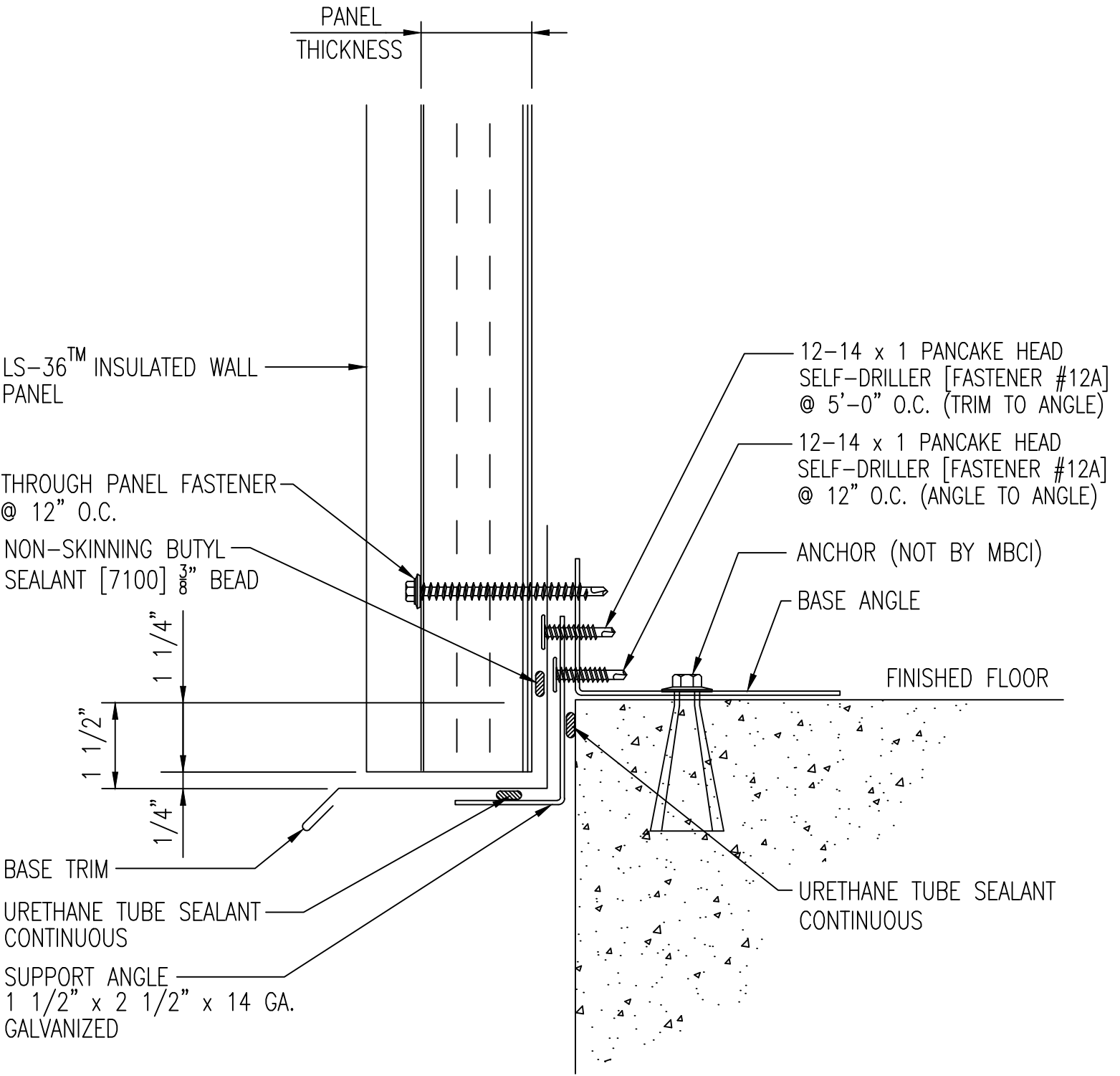
LOOSE FILL INSULATION
OR FIELD APPLIED FOAM
(NOT BY MBCI)

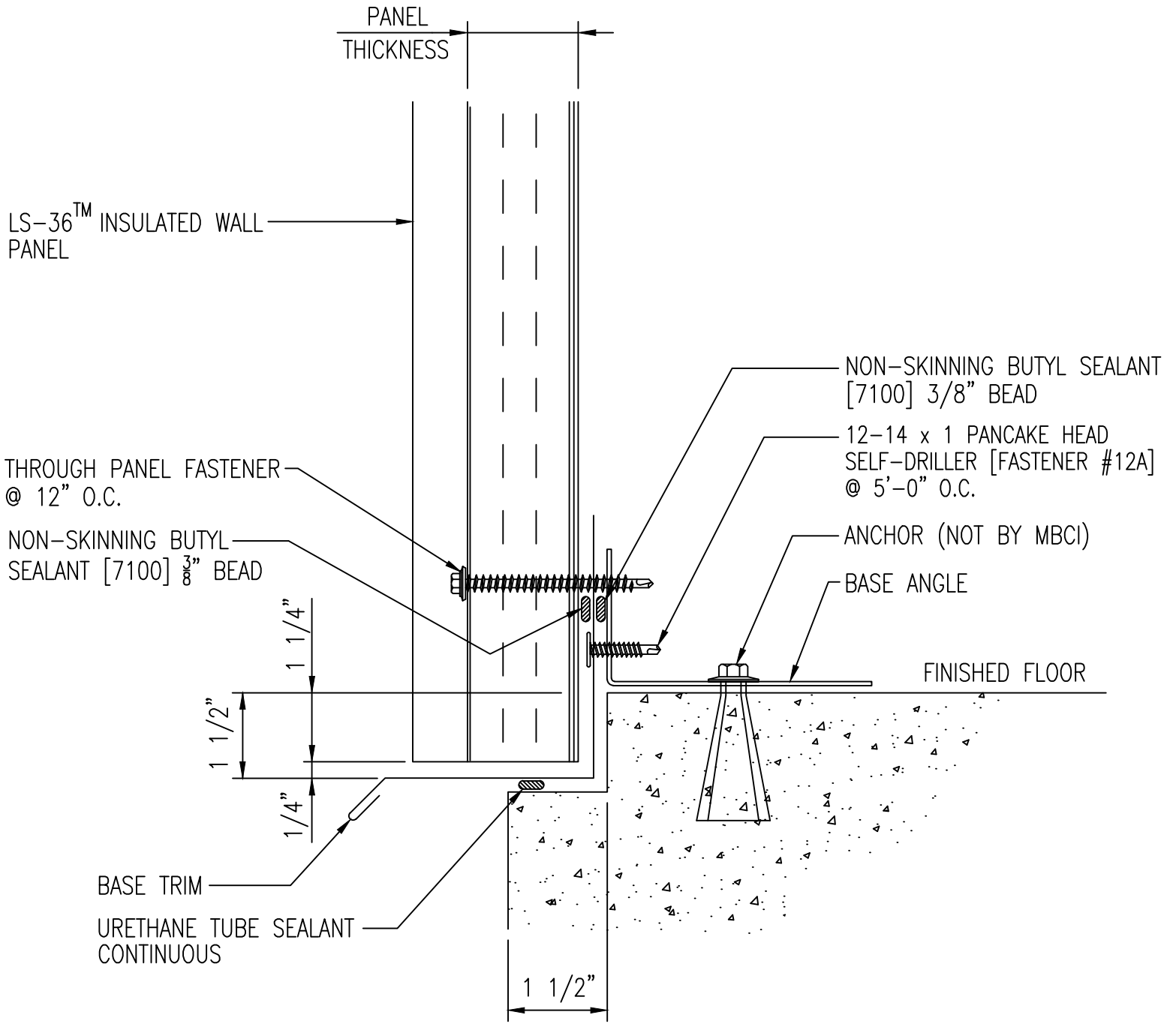
1/4-14 x 7/8 LAPTEK W/WASHER
[FASTENER #4A] @ 24" O.C.

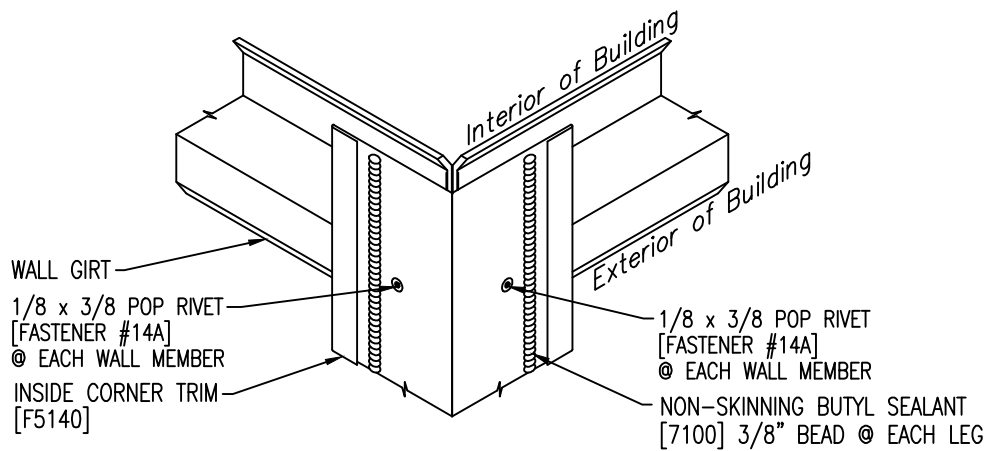
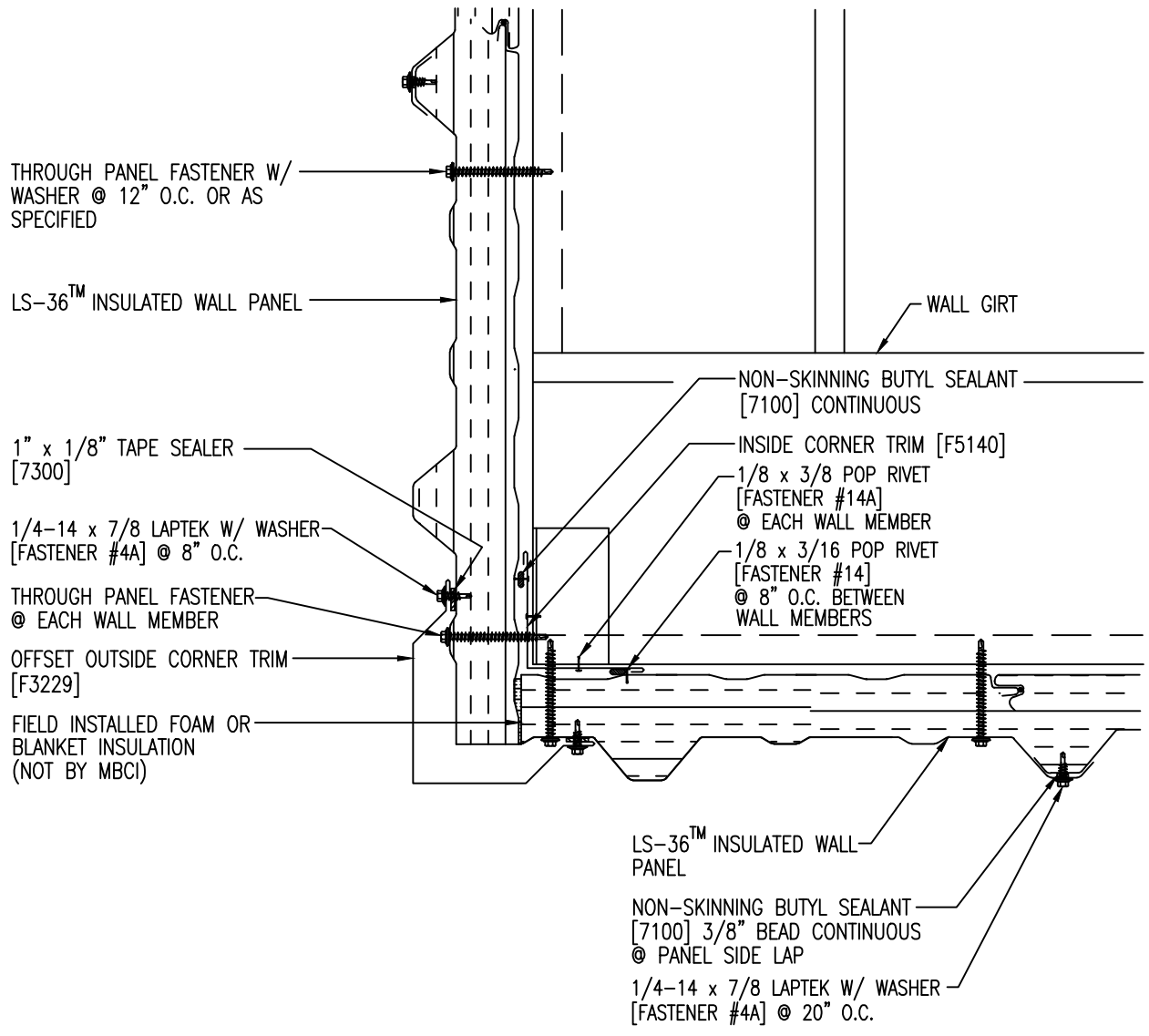
INTERIOR RIDGE TRIM [F3450]

NON-SKINNING BUTYL SEALANT
[7100] 3/8" BEAD

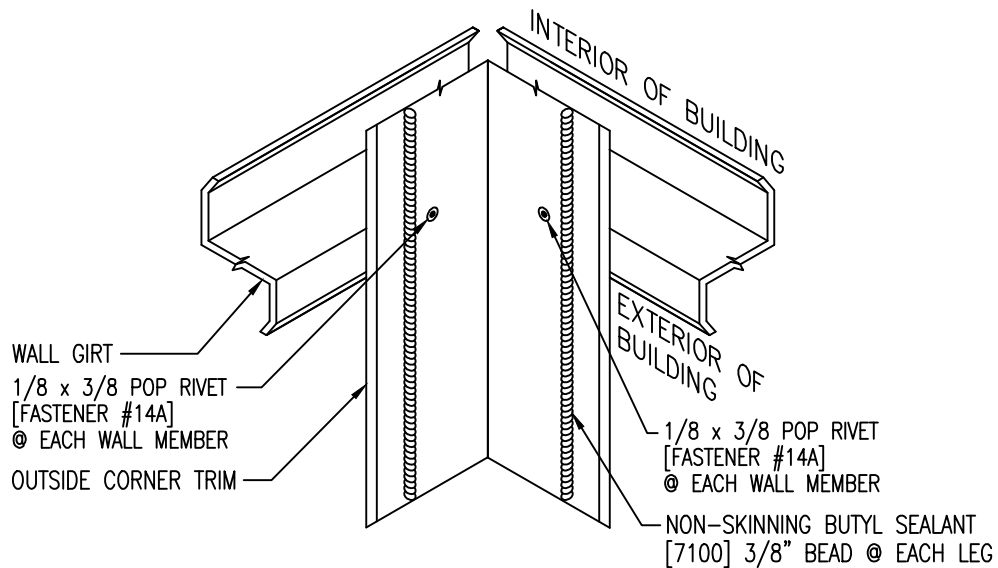
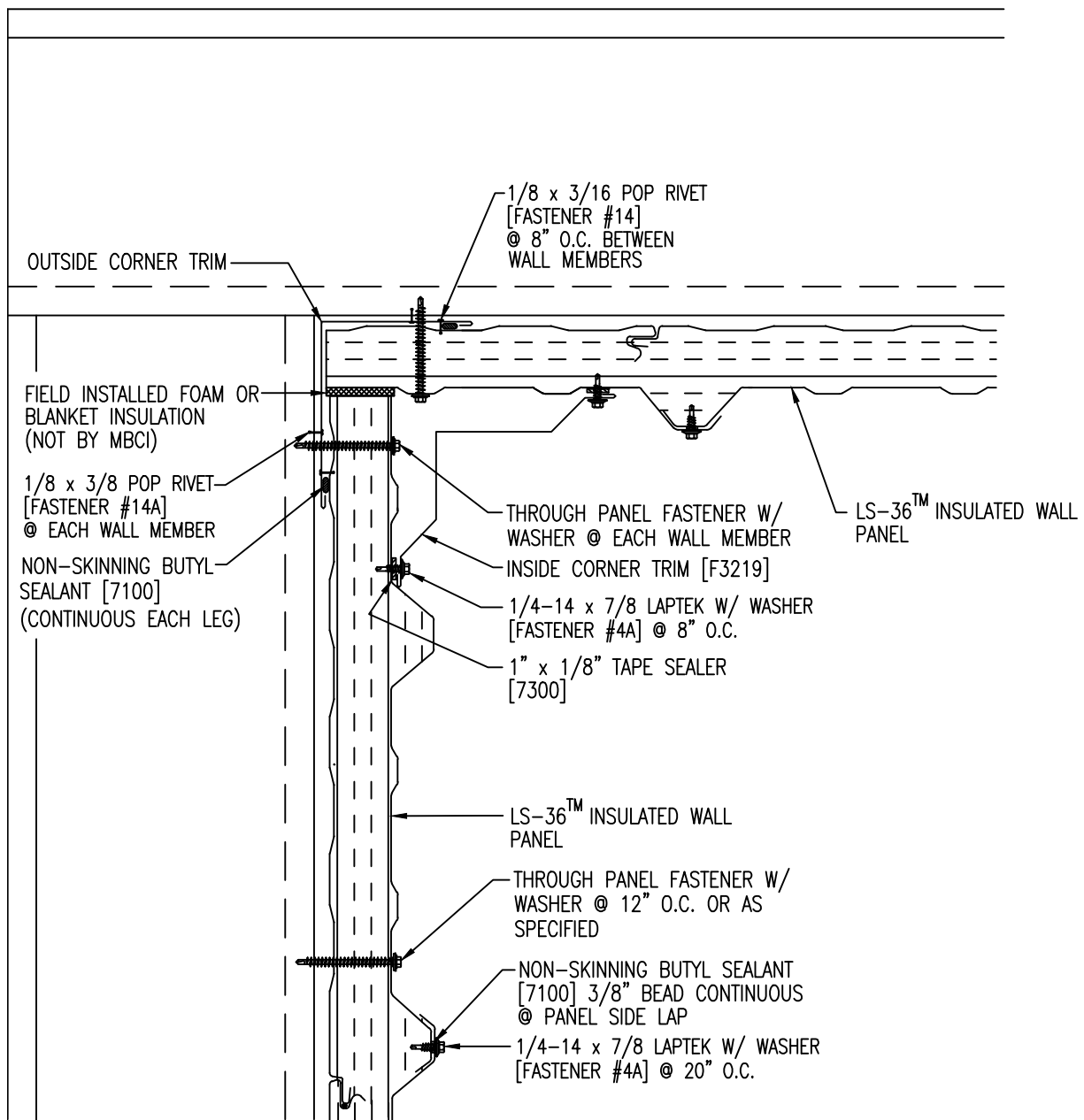






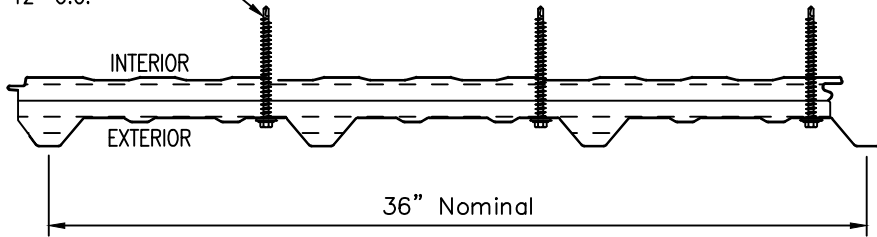


CORNER FRAMING & SEALANT AT INSIDE CORNER TRIM

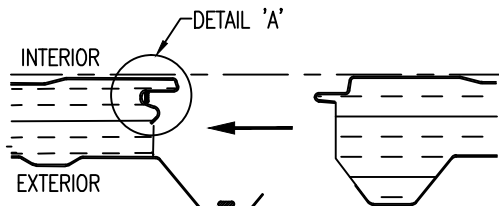


CORNER FRAMING & SEALANT AT INSIDE CORNER TRIM

THROUGH PANEL FASTENER W/
WASHER @ 12" O.C.



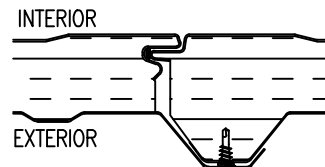
LS-36™ INSULATED WALL PANEL



NON-SKINNING BUTYL SEALANT
[7100] 3/8" BEAD CONTINUOUS
@ PANEL SIDE LAP
(WHEN SPECIFIED)

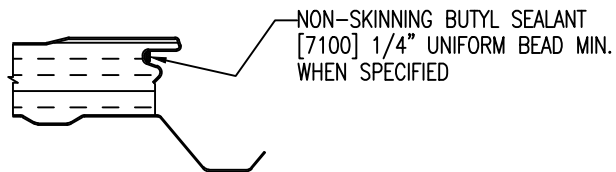
INSTALLATION DIRECTION

1/4-14 x 7/8 LAPTEK W/ WASHER
[FASTENER #4A] @ 20" O.C.



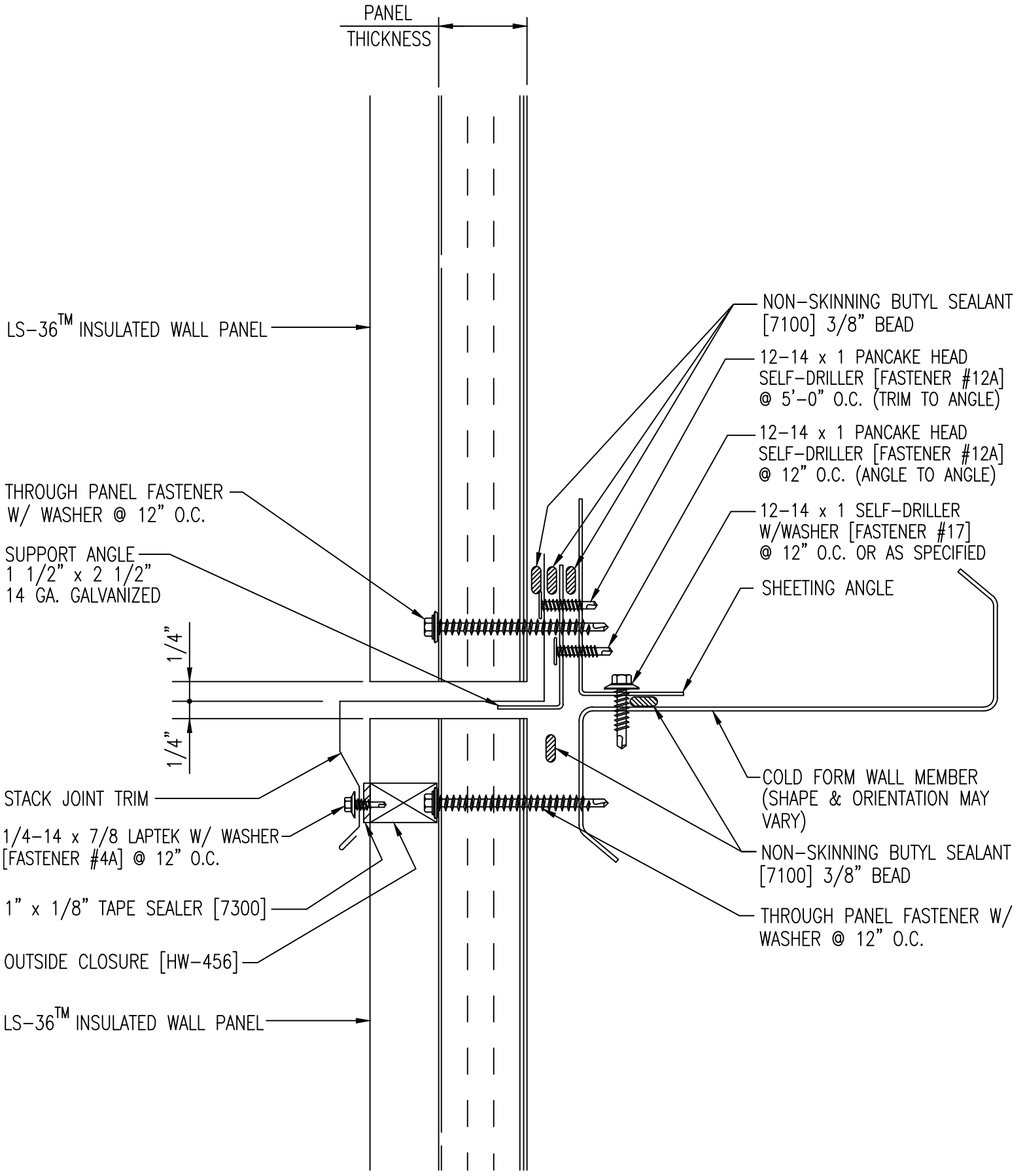
NON-SKINNING BUTYL SEALANT
[7100] 3/8" BEAD CONTINUOUS
@ PANEL SIDE LAP
(WHEN SPECIFIED)

SIDELAP FASTENERS



DETAIL 'A'

JOINT SEALANT APPLICATION



PANEL THICKNESS

LS-36™ INSULATED WALL PANEL

THROUGH PANEL FASTENER W/ WASHER @ 12" O.C.

SUPPORT ANGLE
1 1/2" x 2 1/2"
14 GA. GALVANIZED

1/4"

1/4"

STACK JOINT TRIM

1/4-14 x 7/8 LAPTEK W/ WASHER
[FASTENER #4A] @ 12" O.C.

1" x 1/8" TAPE SEALER [7300]

OUTSIDE CLOSURE [HW-456]

LS-36™ INSULATED WALL PANEL

NON-SKINNING BUTYL SEALANT [7100] 3/8" BEAD

12-14 x 1 PANCAKE HEAD SELF-DRILLER [FASTENER #12A] @ 5'-0" O.C. (TRIM TO ANGLE)

12-14 x 1 PANCAKE HEAD SELF-DRILLER [FASTENER #12A] @ 12" O.C. (ANGLE TO ANGLE)

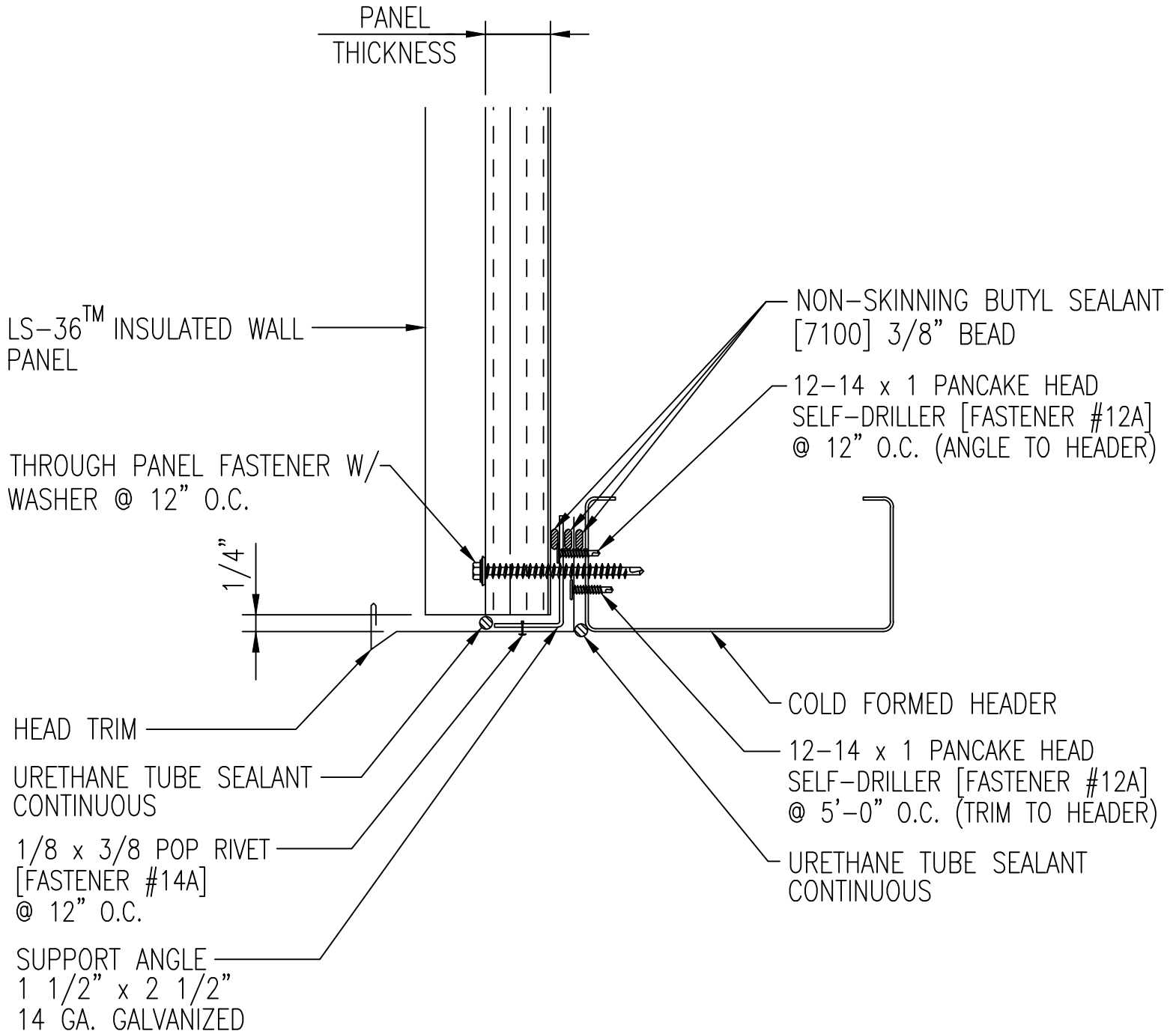
12-14 x 1 SELF-DRILLER W/WASHER [FASTENER #17] @ 12" O.C. OR AS SPECIFIED

SHEETING ANGLE

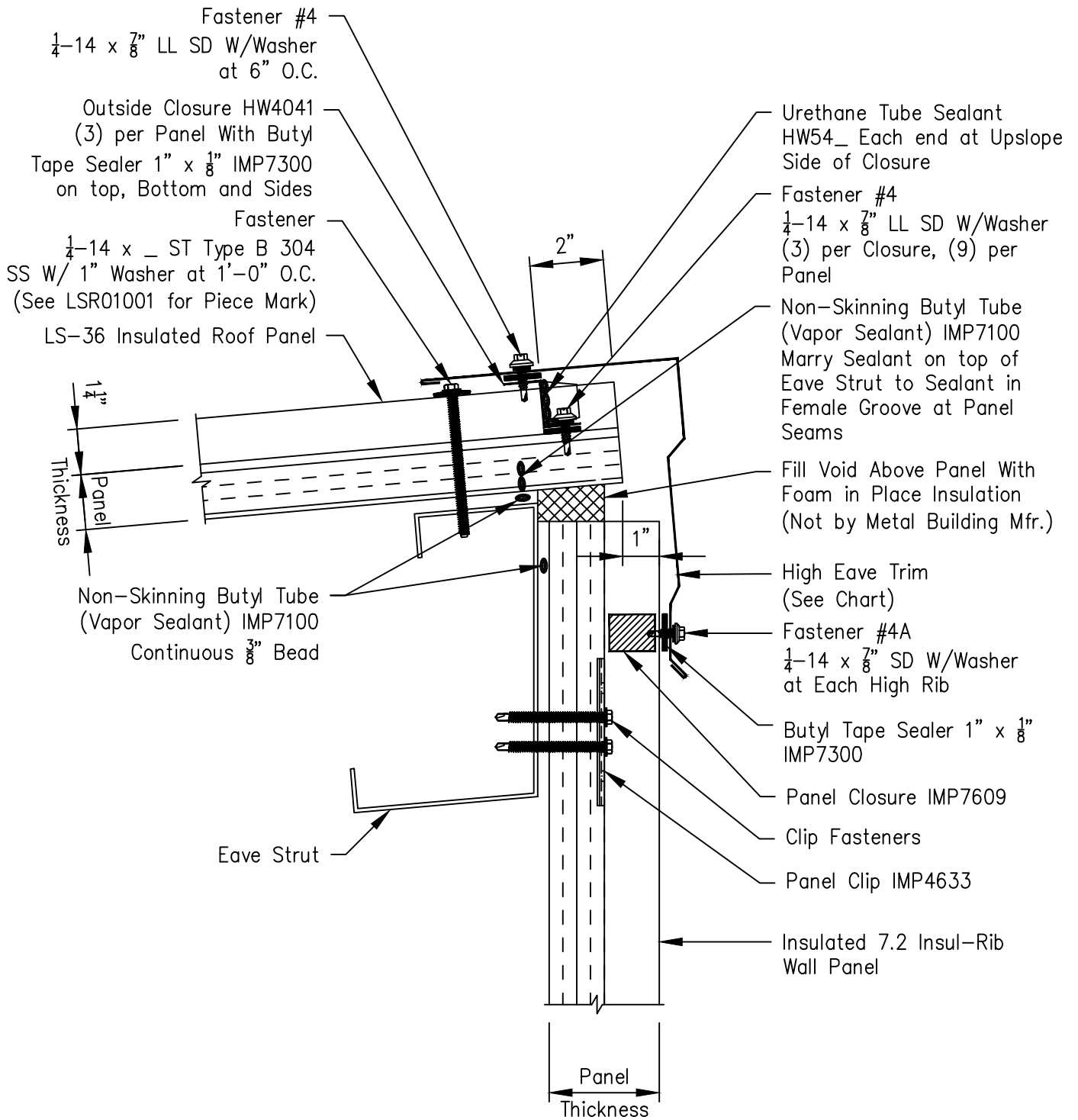
COLD FORM WALL MEMBER (SHAPE & ORIENTATION MAY VARY)

NON-SKINNING BUTYL SEALANT [7100] 3/8" BEAD

THROUGH PANEL FASTENER W/ WASHER @ 12" O.C.



LS-36 Roof - 7.2 Insul-Rib Wall High Side Eave



Roof Panel Thickness	High Eave Trim
1 1/2" - 3"	F3340
4" - 5"	F3341
6"	F3342
Parametric	F3346