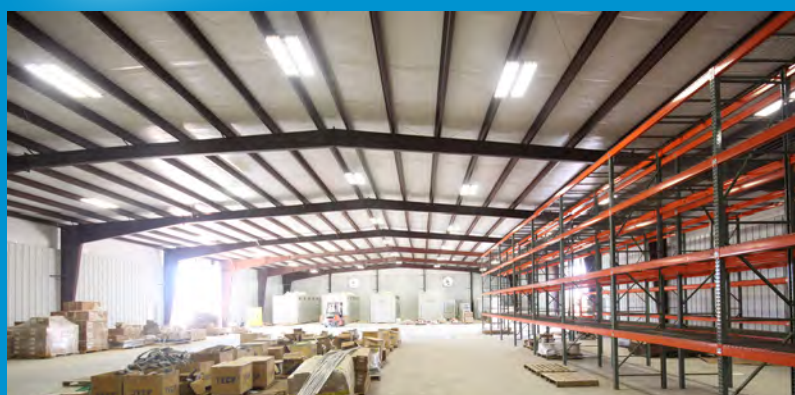


CBS-Xpres[®]



**EFFICIENT
AFFORDABLE
FAST DELIVERY**

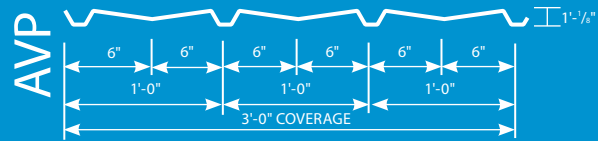
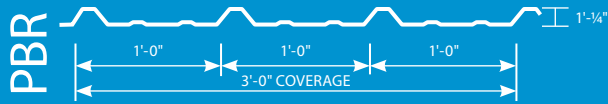


PERFECT FOR HOME, FARM, SMALL BUSINESS, SHOP OR STORAGE. A QUALITY BUILDING AT AN ECONOMICAL PRICE. MANUFACTURED FROM SUSTAINABLE ALL-STEEL COMPONENTS

Widths: 15' x 100'. Length: 20' x 500'. Eave height: 10' to 26'.



- Steel frame systems to meet your toughest demands
- Attractive, energy efficient and affordable
- Offering a variety of roof and wall panel options to meet your specific needs
- Add-ons and accessories to customize your building



DURABLE STEEL FRAME SYSTEMS

The structural steel frame systems from Ceco are built with high quality steel to be strong enough to handle your toughest demands.

VERSATILE PANEL SYSTEMS

Whether your goal is energy efficiency, aesthetic appeal or cost savings, Ceco provides a variety of roof panel systems and wall panel systems to maximize your options.

CBS-Xpres® is available for buildings up to 100 feet by 500 feet with up to a 26-foot eave height. The roof slope can go from ½:12 to 4:12. Common add-ons include

- Standing seam roof
- Trim options
- Walkdoors & overhead doors
- Transverse partition walls

MANY ACCESSORIES TO CHOOSE FROM

- Purlin and Canopy Roof Extensions
- Gutters and Downspouts
- Factory Located Framed Openings
- Interior Wall Liner Panels
- Walkdoors up to 150 MPH
- Insulation
- Windows
- Vents
- Light Transmitting Panels
- Roof Jacks
- Base Trim Options
- Overhead Doors

BUILDING SPECIFICATIONS

WIDTH	15' to 100'
LENGTH	20' to 500'
EAVE HEIGHT	10' to 26'
SIDEWALL BAYS	Equal bays not required (several options available on long buildings)
ROOF SLOPE	½:12 through 4:12
GIRTCONDITION	Bypass or Flush
FRAME TYPE	<ul style="list-style-type: none"> • Non-Expandable Cold-Formed Endwall • Half-Load Non-Expandable Ridged Frame • Full-Load Expandable Frame
FRAME	Clear-Span, Tapered or straight Columns
ROOF PANEL	PBR, Ultra-Dek, Double-Lok
WALL PANEL	PBR, PBR (Reverse) or AVP





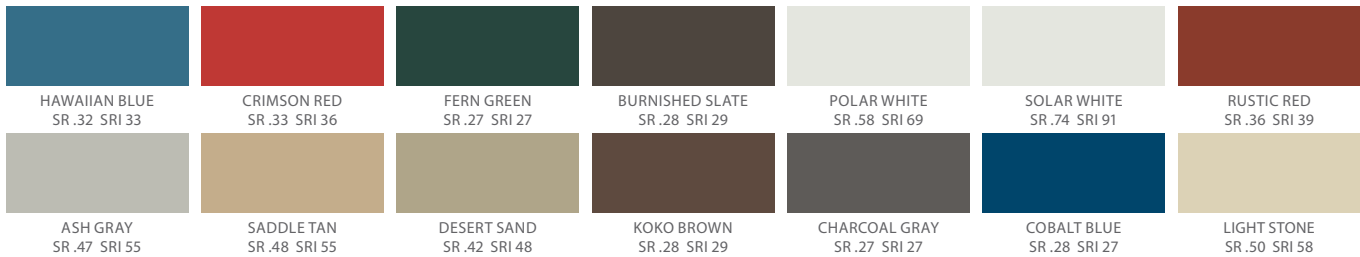
YOUR X-PRES ROUTE TO A FINISHED METAL BUILDING SYSTEM!

Our CBS-Xpres® line of buildings is perfect for a home, farm or small business location, shop or storage, and is an economical solution at a competitive price. Manufactured from quality all-steel components, a CBS-Xpres® building requires little maintenance. Plus, it will be engineered to meet the building code requirements of your area. Let us quote a CBS-Xpres® building for your needs.

- Quick and convenient pricing makes ordering your building easy!
- Quick delivery and customized to your exact specifications.
- Multiple building widths, lengths and eave heights.
- Easily erected and available in 14 standard wall and trim colors with either Galvalume® or white roof panels.

SIGNATURE 200® COLOR OPTIONS Standard Colors | Siliconized Polyester Polar White is a Straight Polyester.

*All colors are shown approximate actual colors. Final selection should be made from actual color chips. Check color availability per panel and gauge at www.CBS-Xpres.com.

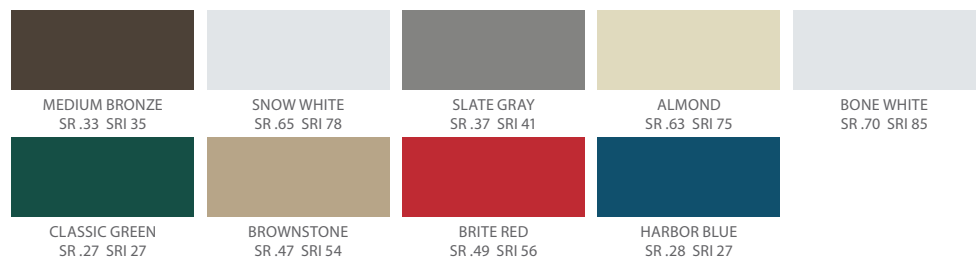


SIGNATURE 300® COLOR OPTIONS

Standard Colors

KYNAR 500®, HYLAR® 5000

PVDF Resin-based Coating or
Finish, Low Gloss



NOTE: Codes and loads are jobsite specific and may be changed by local building officials. Buyers must check and verify codes for the accuracy of each site. Descriptions and specifications contained herein were in effect at the time this publication was approved for printing. In a continuing effort to refine and improve products, Ceco Building Systems reserves the right to discontinue products at any time or change specifications and/or designs without incurring obligation. To ensure you have the latest information available, please inquire or visit our website at www.cecobuildings.com. Application details are for illustration purposes only and may not be appropriate for all environmental conditions, building designs or panel profiles. If there is a conflict between the preceding and project erection drawings, the erection drawings will take precedence.

For a user name and password to log in to www.CBS-Xpres.com, contact your district sales manager or regional office.

CBS-Xpres® Eastern Office | 252-977-2131
Midwestern Office | 319-217-4000

Ceco Building Systems Southern Office | 662-243-6400
an NCI Company Division Office | 1-800-474-2326 (CECO) | www.cecobuildings.com



CBS-Xpres® is a registered trademark of NCI Group, Inc. Ceco® is a registered trademark of Robertson Ceco II Corporation, an NCI company. Galvalume® Plus is a registered and protected trademark of BIEC International, Inc.