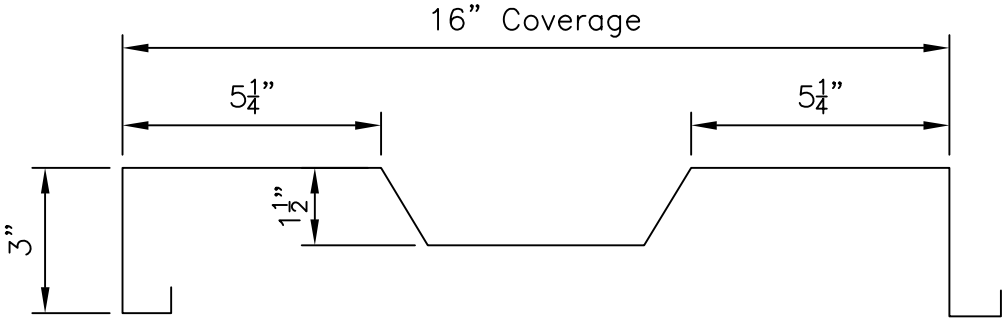


ShadowRib  
Profile

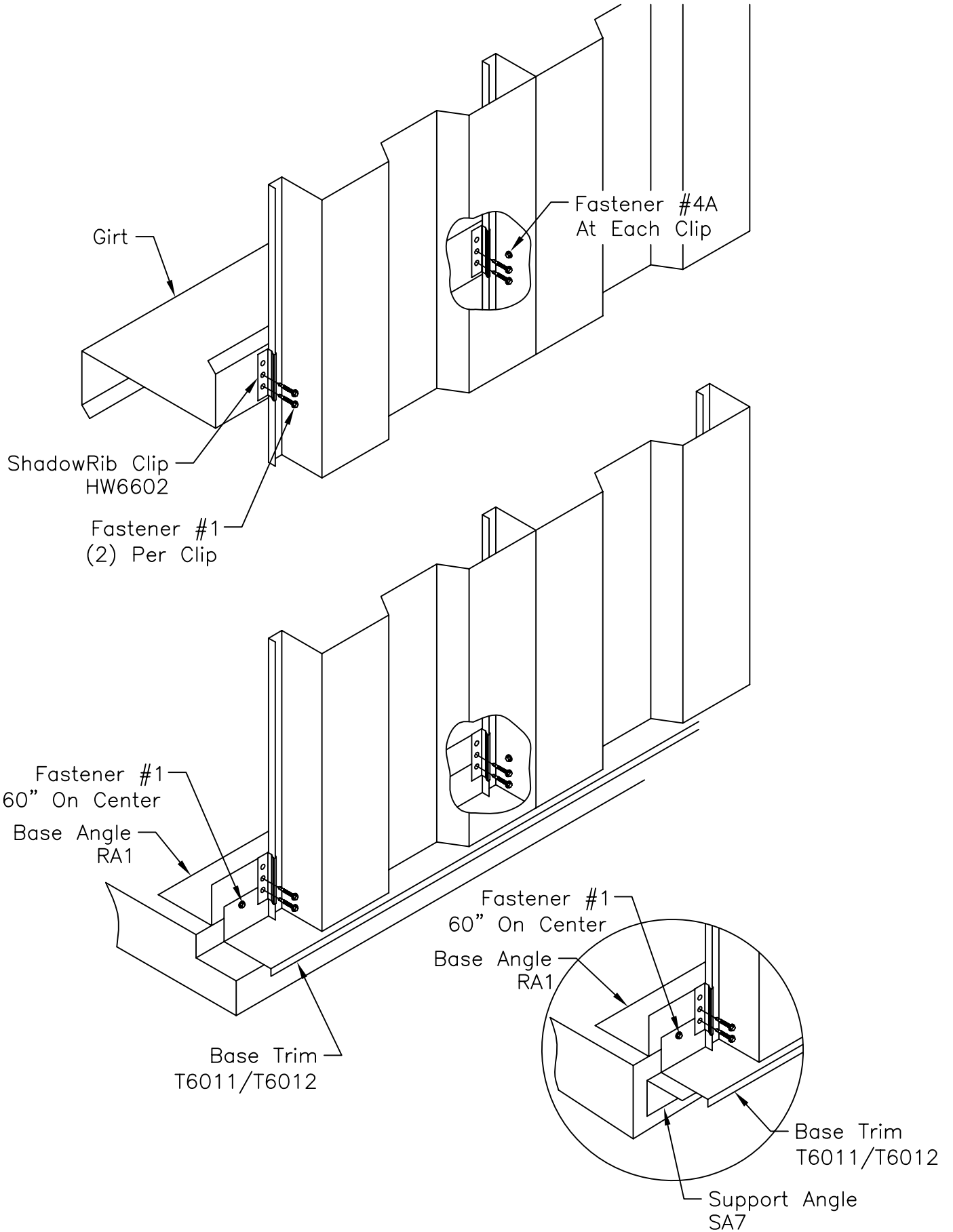
SHT. NO. SR00001	
DATE JAN. 09	REV. 00



SHADOWRIB WALL PANEL

ShadowRib  
Base and Intermediate Girt

SHT. NO. SR01001	
DATE Oct. 09	REV. 02

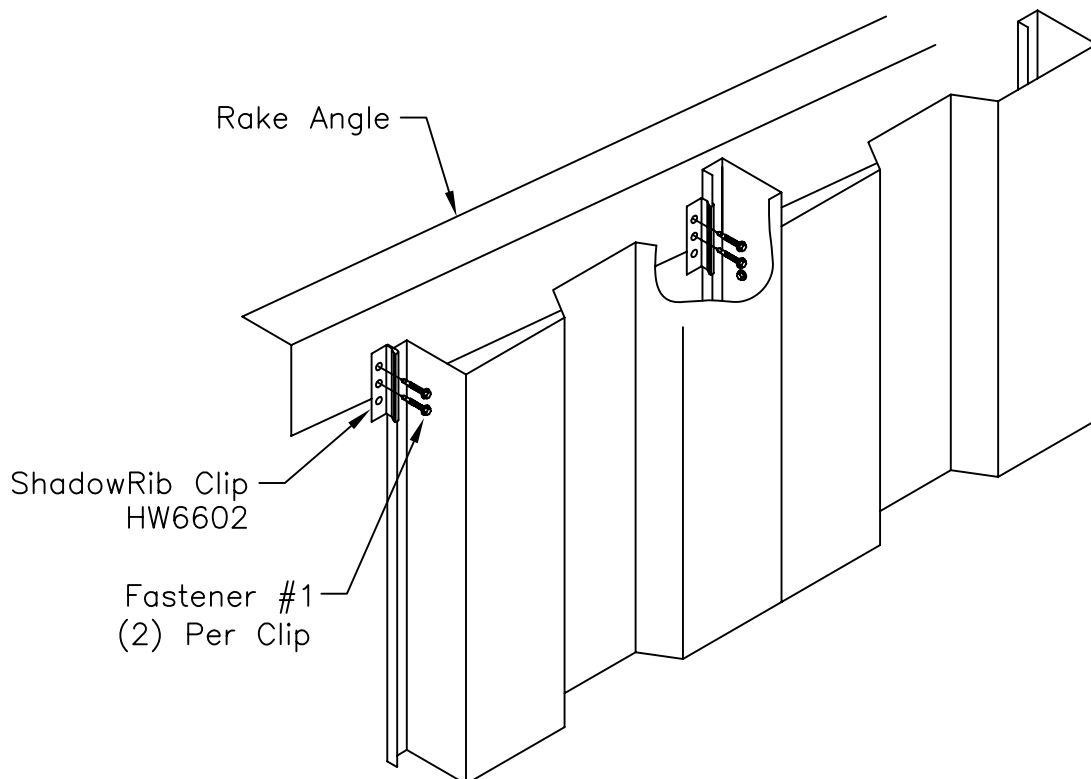
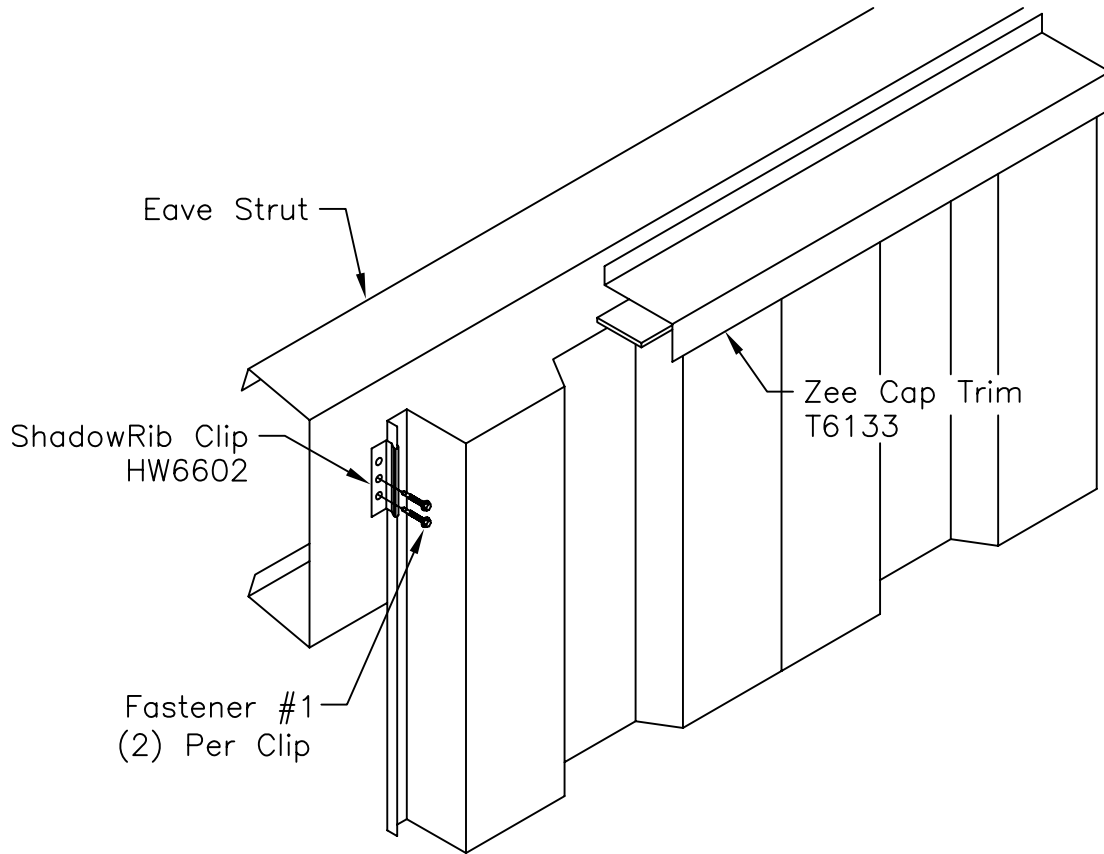


ShadowRib  
Sidewall and Rake

SHT. NO.  
SR01002

DATE  
JAN. 09

REV.  
00

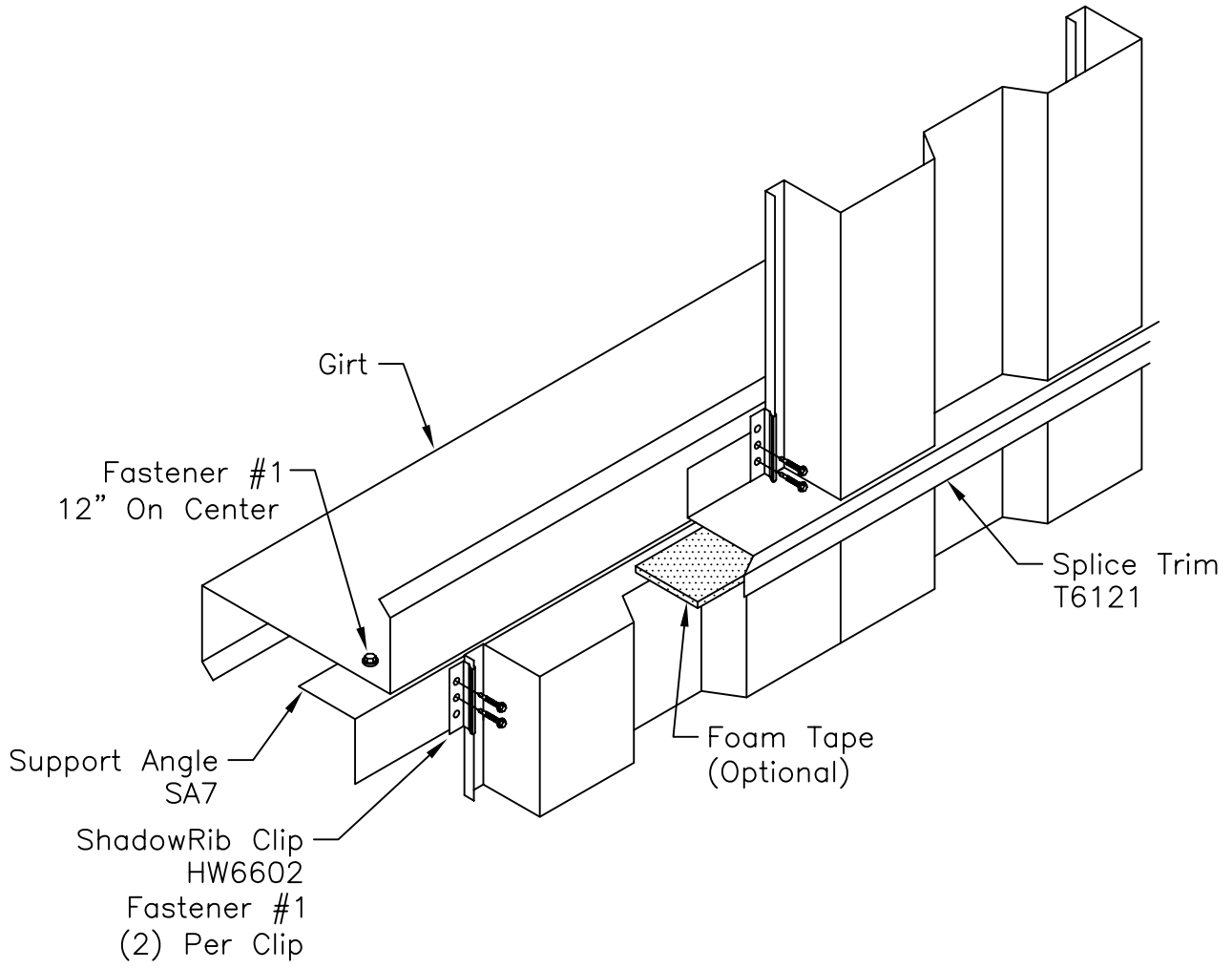


ShadowRib  
Wall Splice

SHT. NO.  
SR01003

DATE  
Oct. 09

REV.  
01

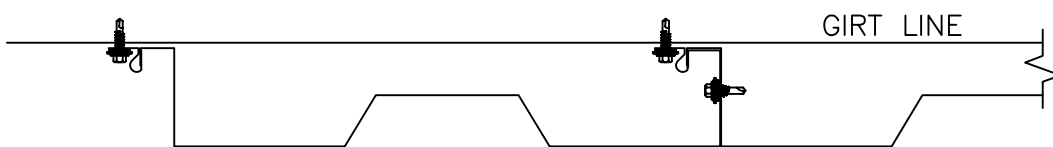
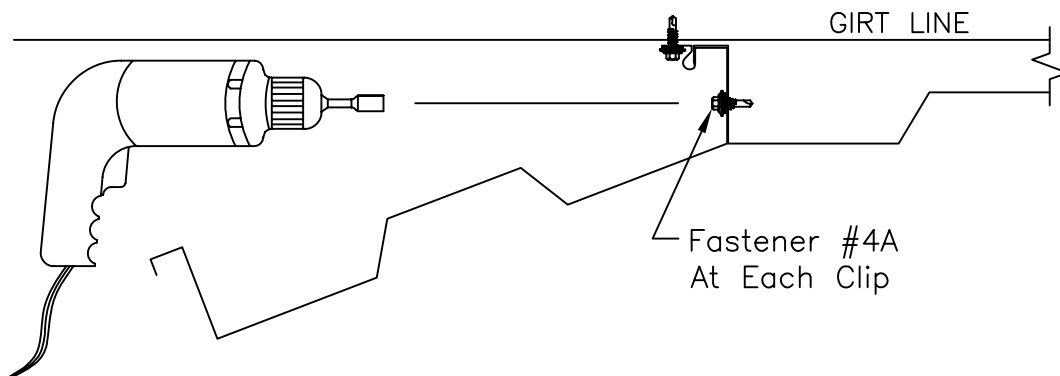
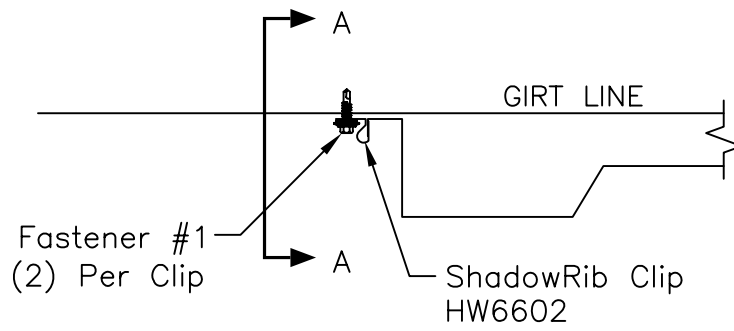
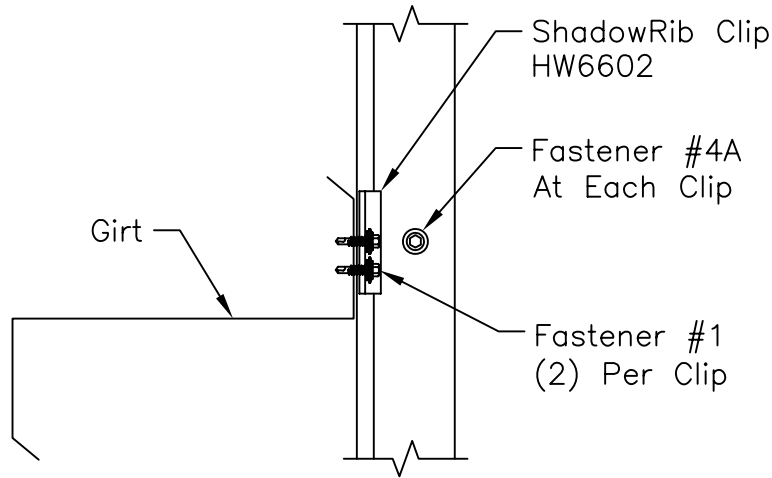


ShadowRib  
Panel Attachment

SHT. NO.  
SR01004

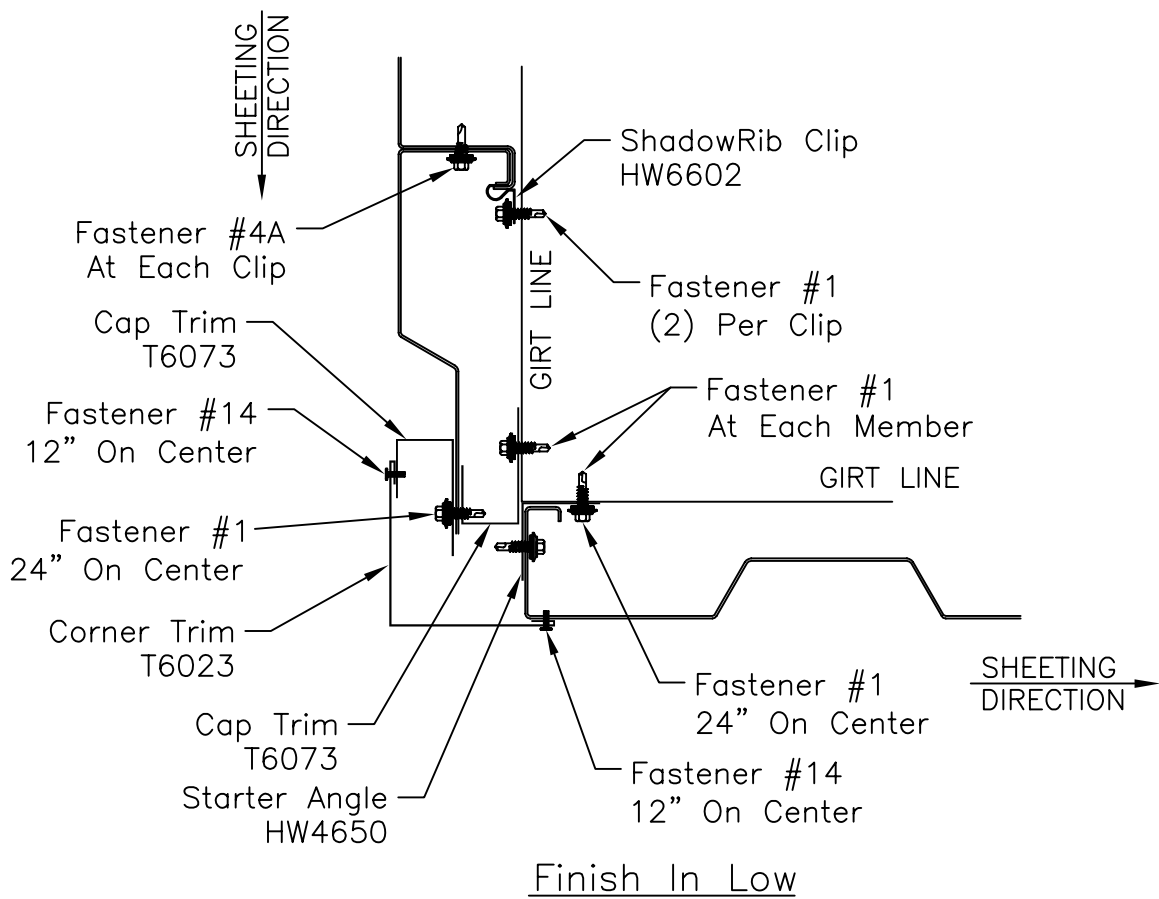
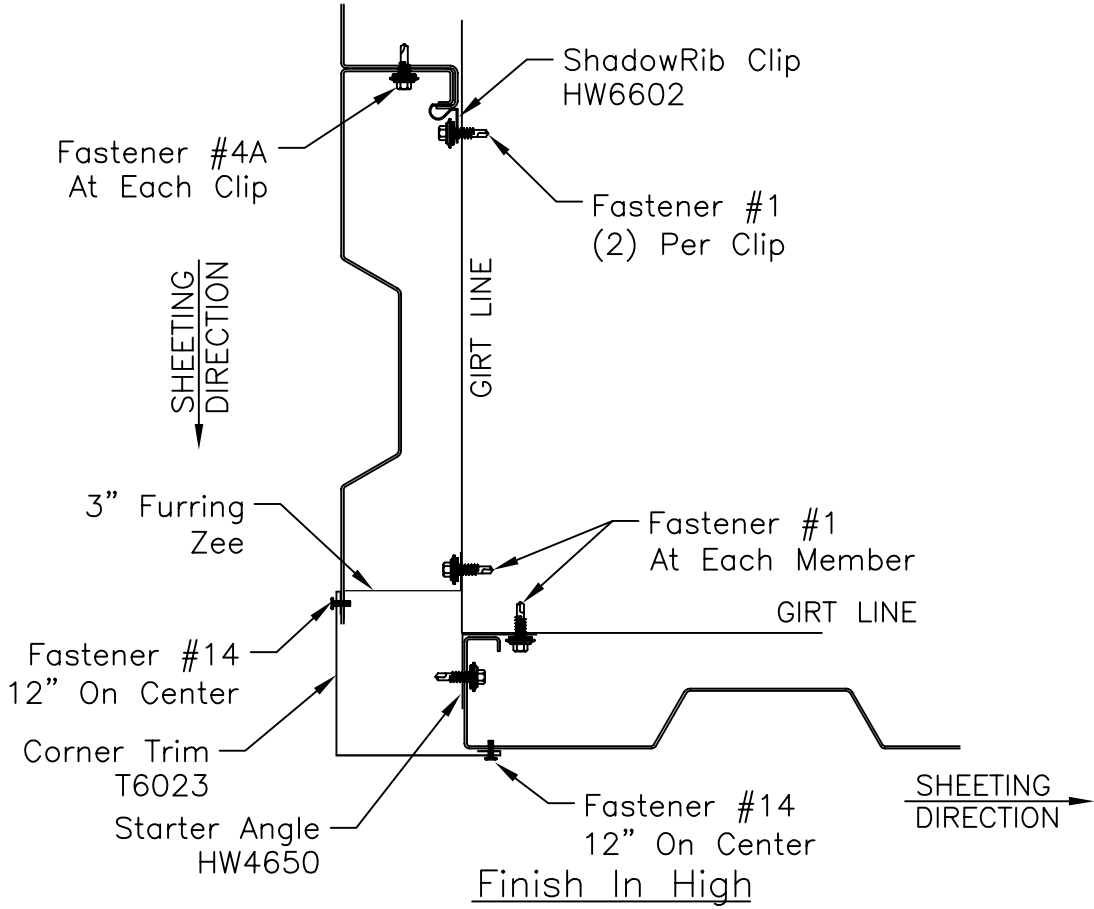
DATE  
JAN. 09

REV.  
00



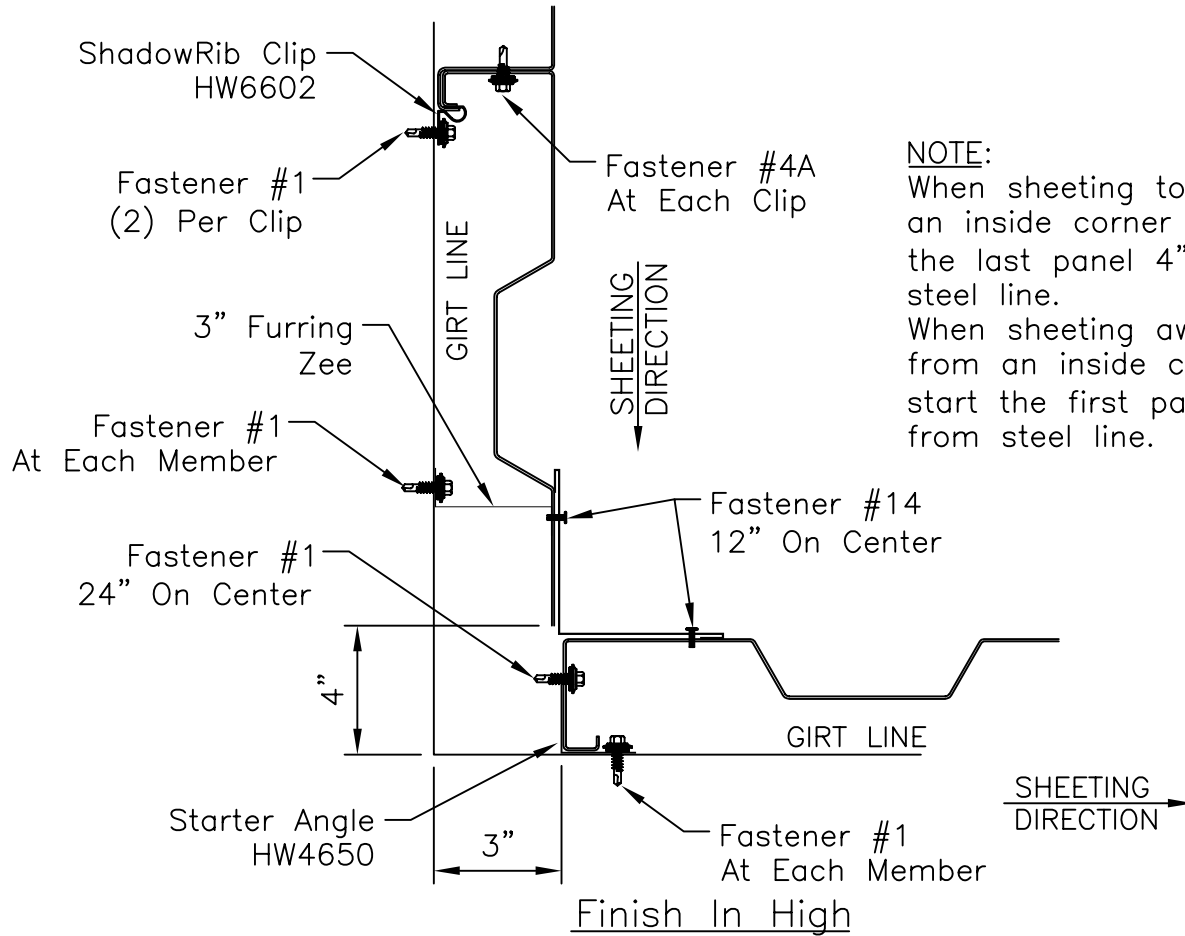
ShadowRib  
Outside Corner

SHT. NO. SR02001	
DATE JAN. 09	REV. 00

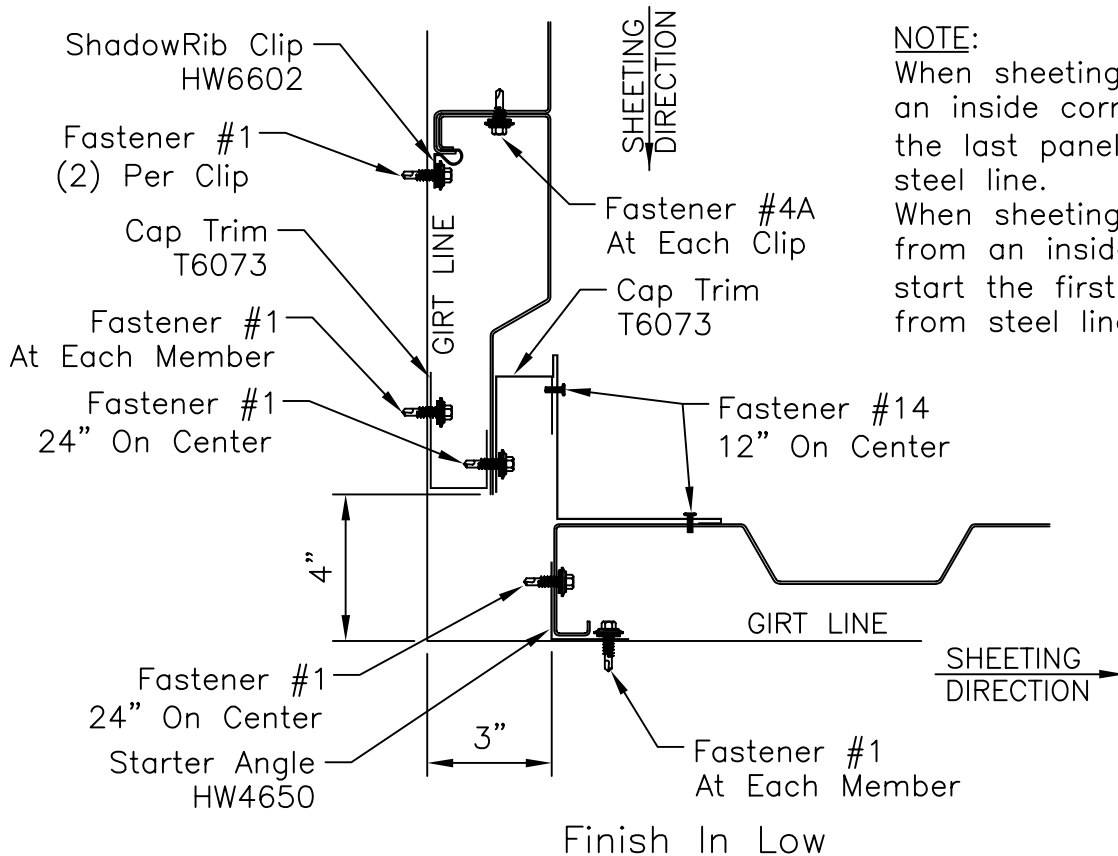


ShadowRib  
Inside Corner

SHT. NO. SR02002	
DATE JAN. 09	REV. 00



NOTE:  
When sheeting toward an inside corner stop the last panel 4" from steel line.  
When sheeting away from an inside corner start the first panel 3" from steel line.



NOTE:  
When sheeting toward an inside corner stop the last panel 4" from steel line.  
When sheeting away from an inside corner start the first panel 3" from steel line.

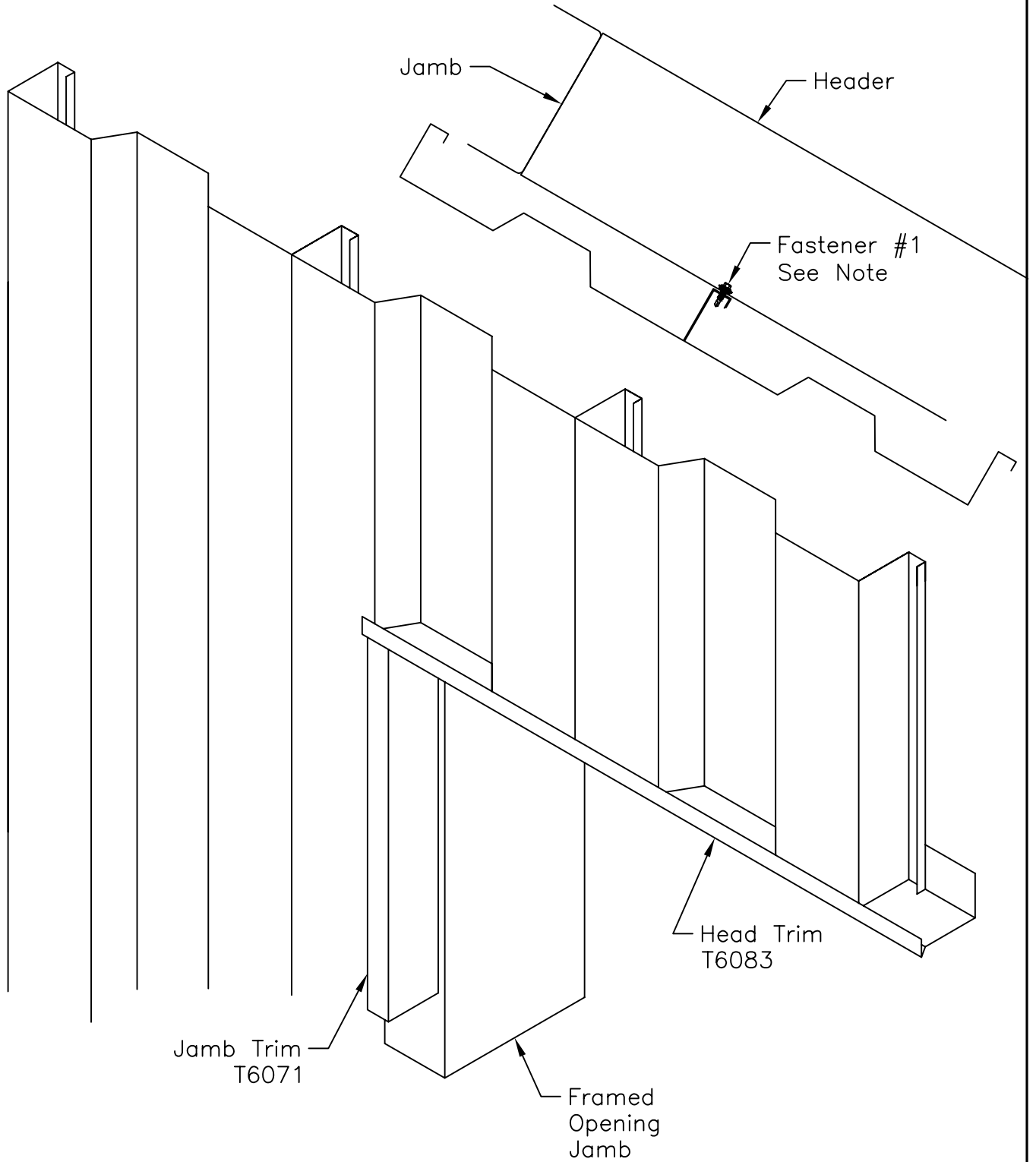
ShadowRib  
Framed Opening

SHT. NO.  
SR03001

DATE  
Feb. 09

REV.  
01

NOTE: First panel cut for an opening will require attachment to member from inside the building.



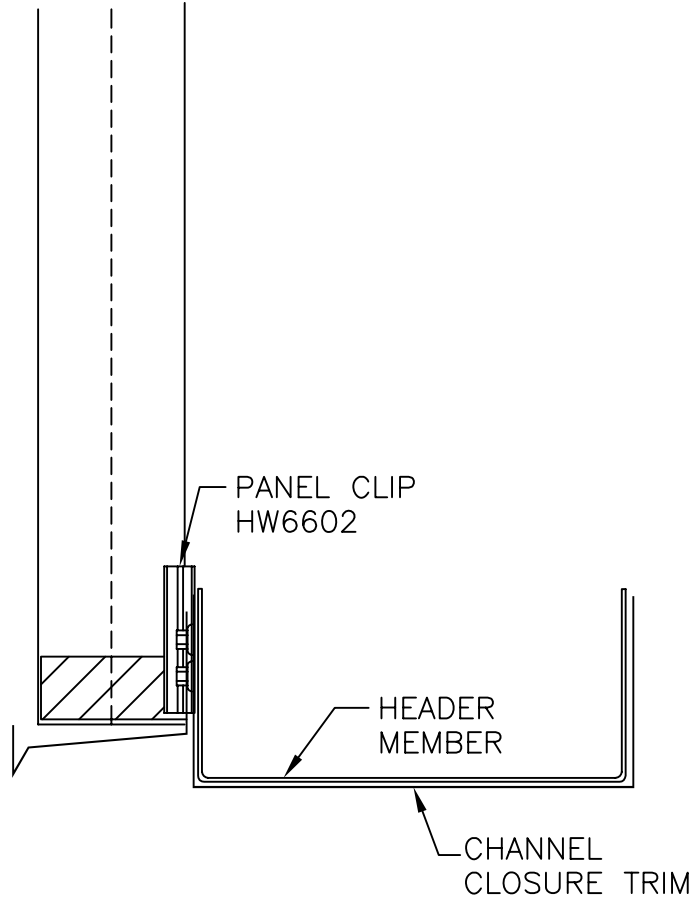


ShadowRib  
Framed Opening Header and Sill

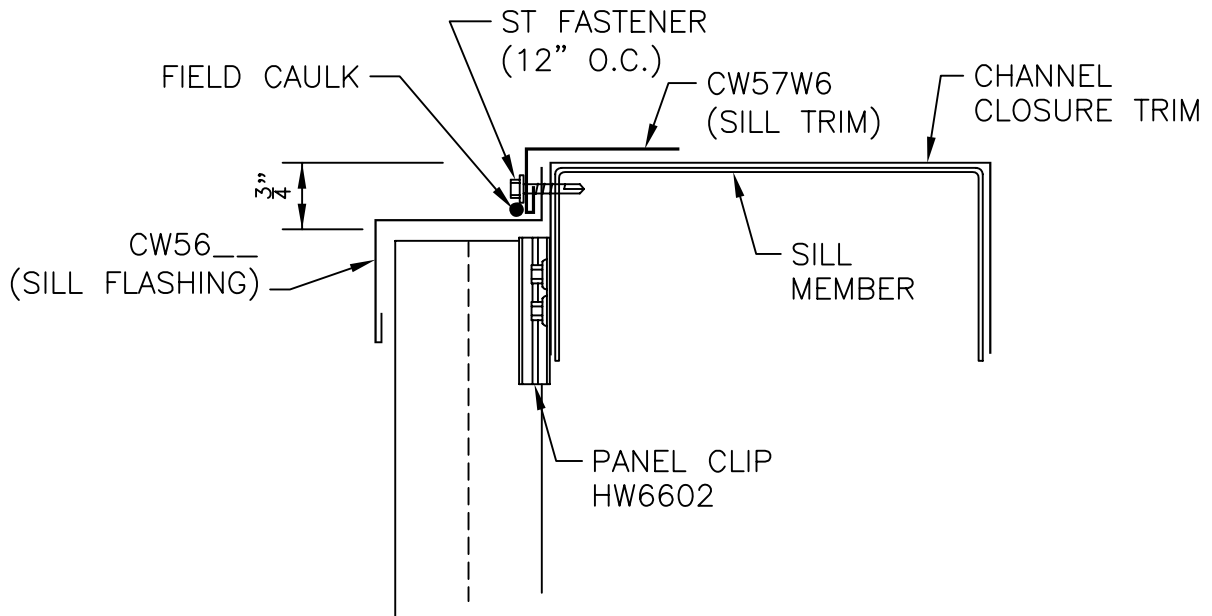
SHT. NO.  
SR03002

DATE  
JAN. 09

REV.  
00



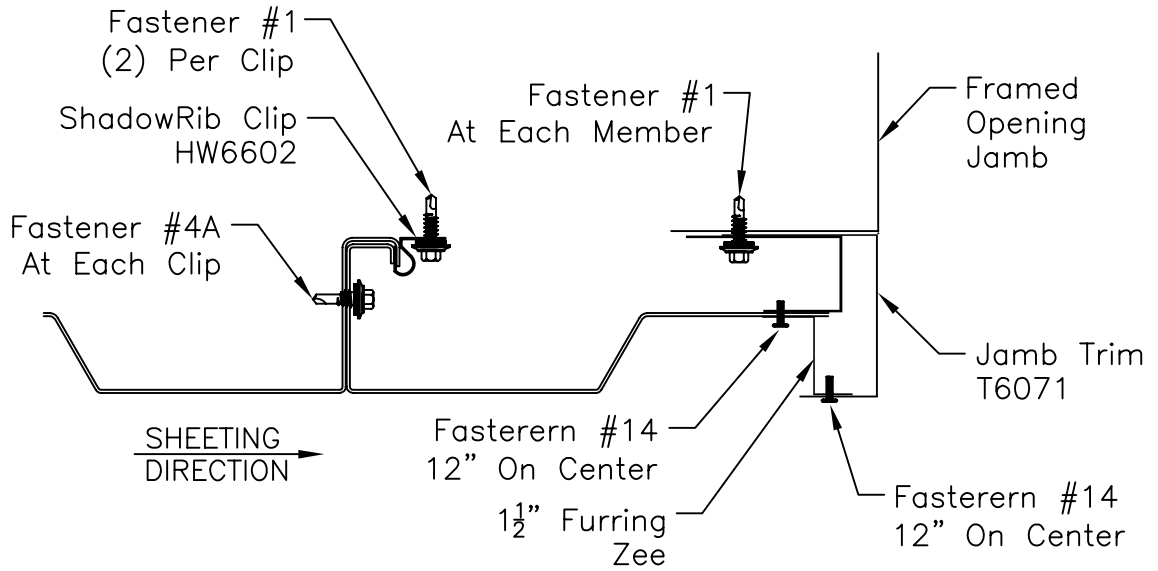
SECTION THRU HEADER



SECTION THRU HEADER

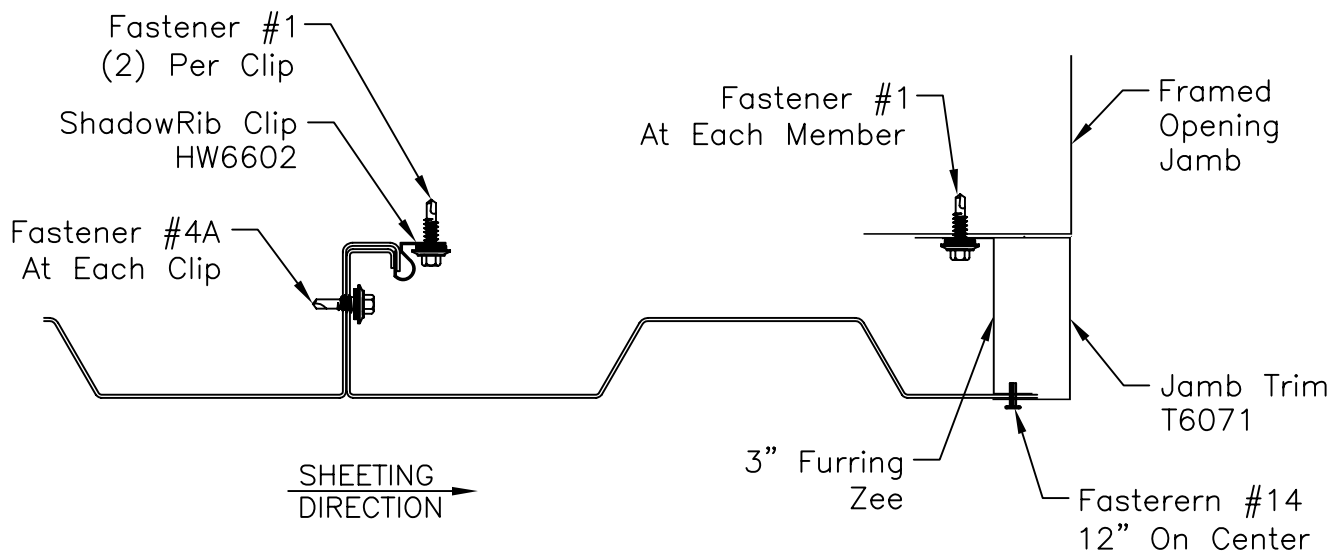
ShadowRib  
Framed Opening Jamb

SHT. NO. SR03003	
DATE JAN. 09	REV. 00



PLAN VIEW OF JAMB

(NOTE: OPENING IN  
LOW OF PANEL)



PLAN VIEW OF JAMB

(NOTE: OPENING IN  
HIGH OF PANEL)