

O/O DIMENSION
(SEE PLAN)

PBR WALL PANEL

1/8 x 3/8 POP RIVET
[FASTENER #14A]
@ 5'-0" O.C.

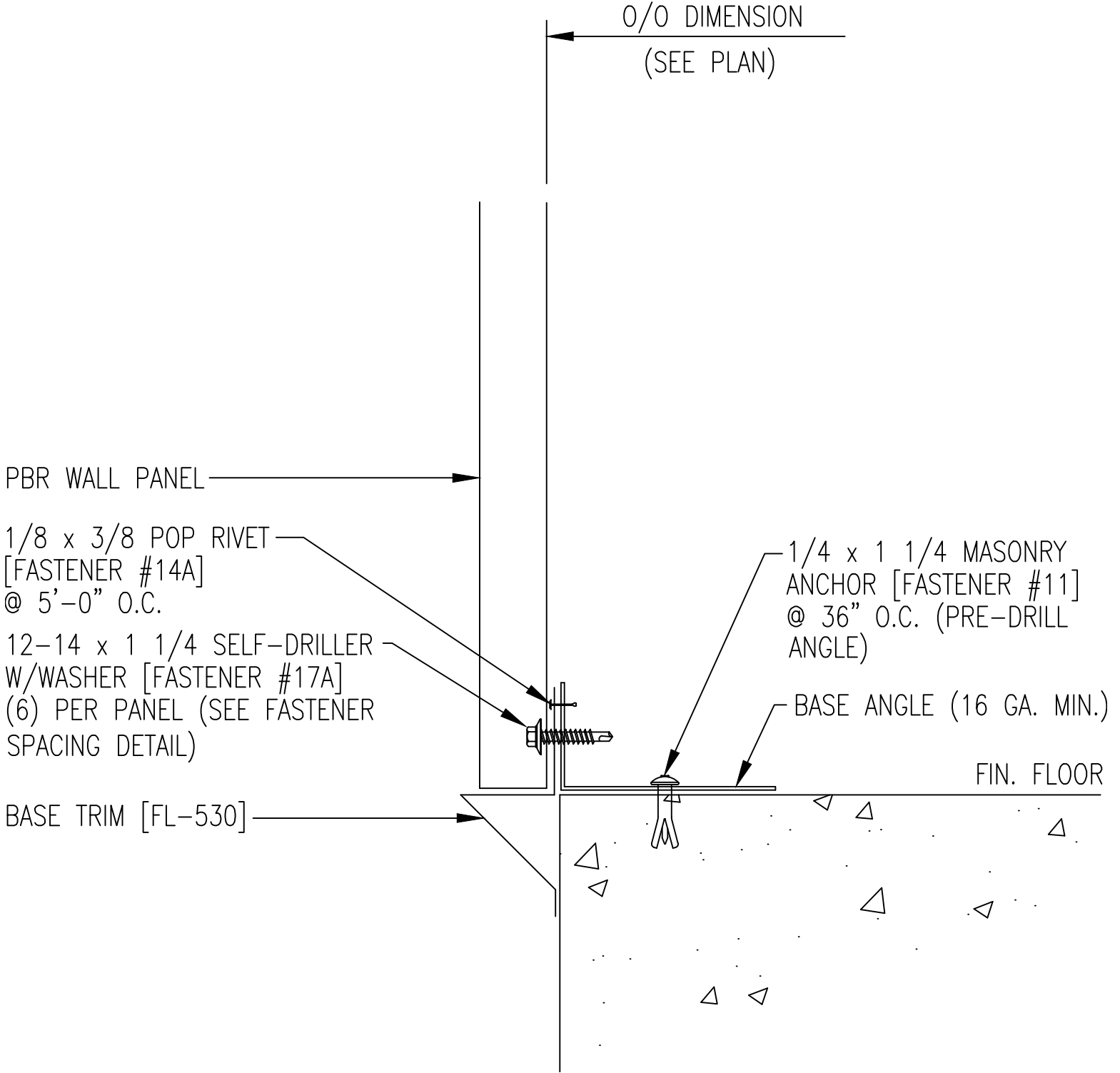
12-14 x 1 1/4 SELF-DRILLER
W/WASHER [FASTENER #17A]
(6) PER PANEL (SEE FASTENER
SPACING DETAIL)

1/4 x 1 1/4 MASONRY
ANCHOR [FASTENER #11]
@ 36" O.C. (PRE-DRILL
ANGLE)

BASE ANGLE (16 GA. MIN.)

FIN. FLOOR

BASE TRIM [FL-530]



O/O DIMENSION
(SEE PLAN)

PBR WALL PANEL

1/8 x 3/8 POP RIVET
[FASTENER #14A]
@ 5'-0" O.C.

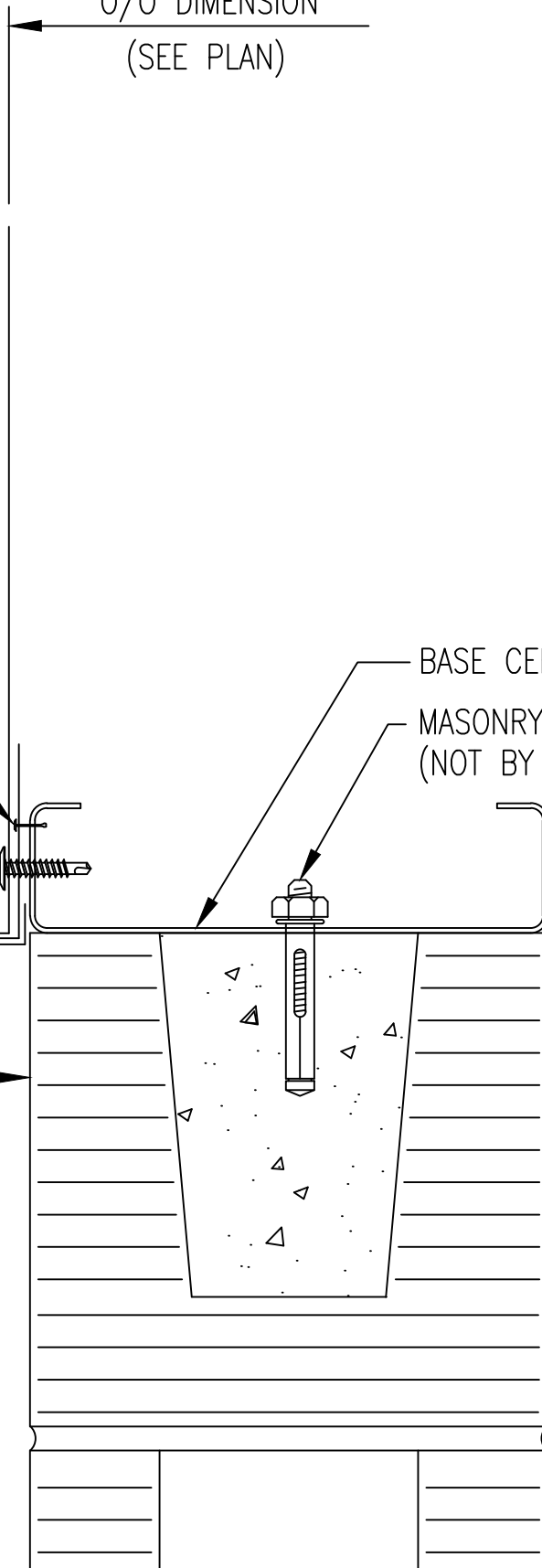
12-14 x 1 1/4 SELF-DRILLER
W/WASHER [FASTENER #17A]
(6) PER PANEL (SEE FASTENER
SPACING DETAIL)

DRIP TRIM [FL-870]

MASONRY WALL (NOT BY MBCI)

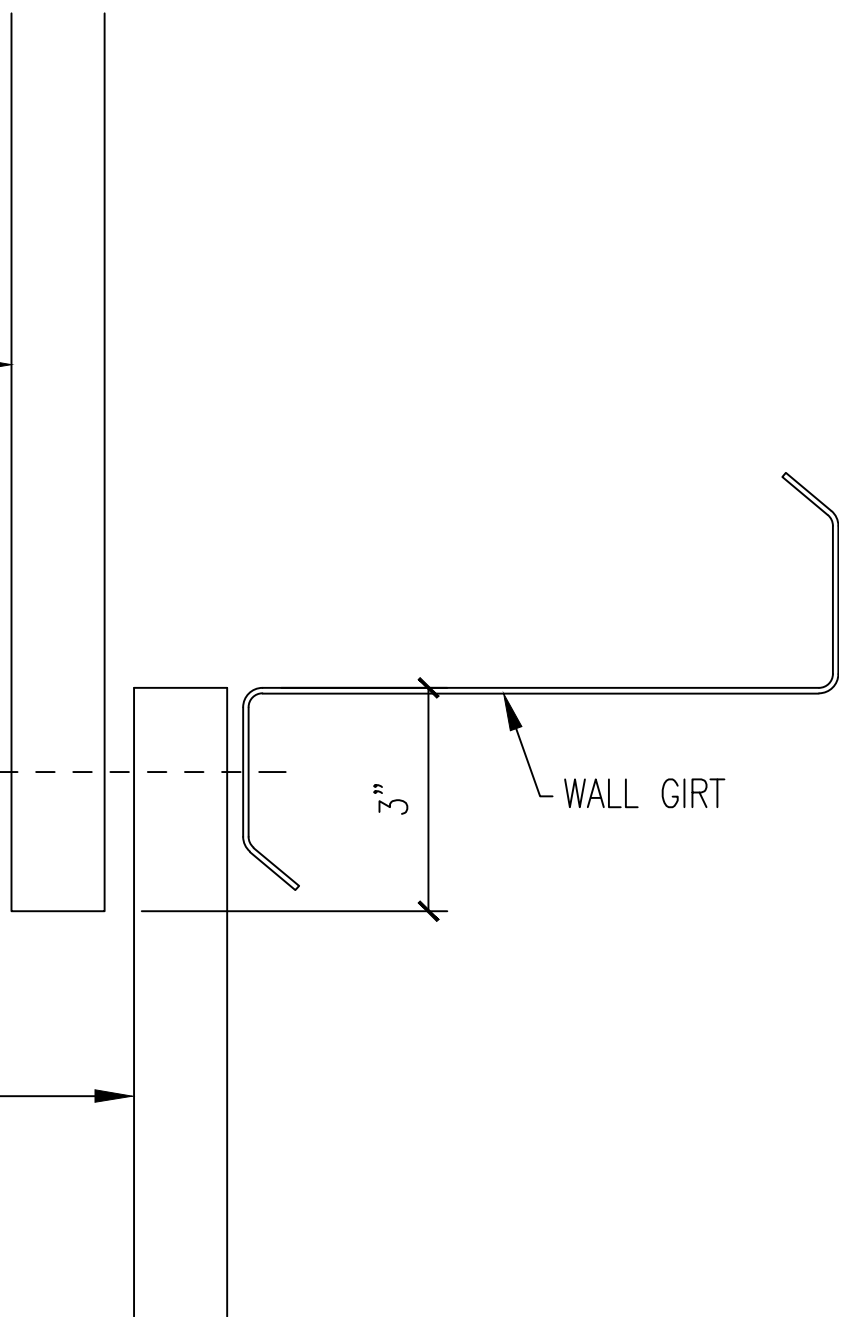
BASE CEE (16 GA. MIN.)

MASONRY ANCHOR
(NOT BY MBCI)



PBR WALL PANEL

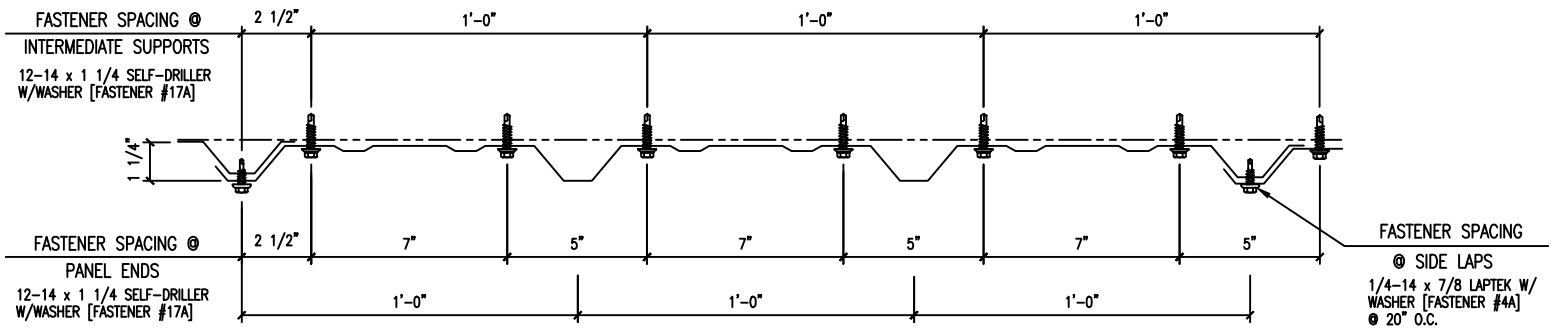
12-14 x 1 1/4 SELF-DRILLER
W/WASHER [FASTENER #17A]
(6) PER PANEL (SEE FASTENER
SPACING DETAIL)



PBR WALL PANEL

3"

WALL GIRT



SHEETING DIRECTION →

PBR FASTENER SPACING

