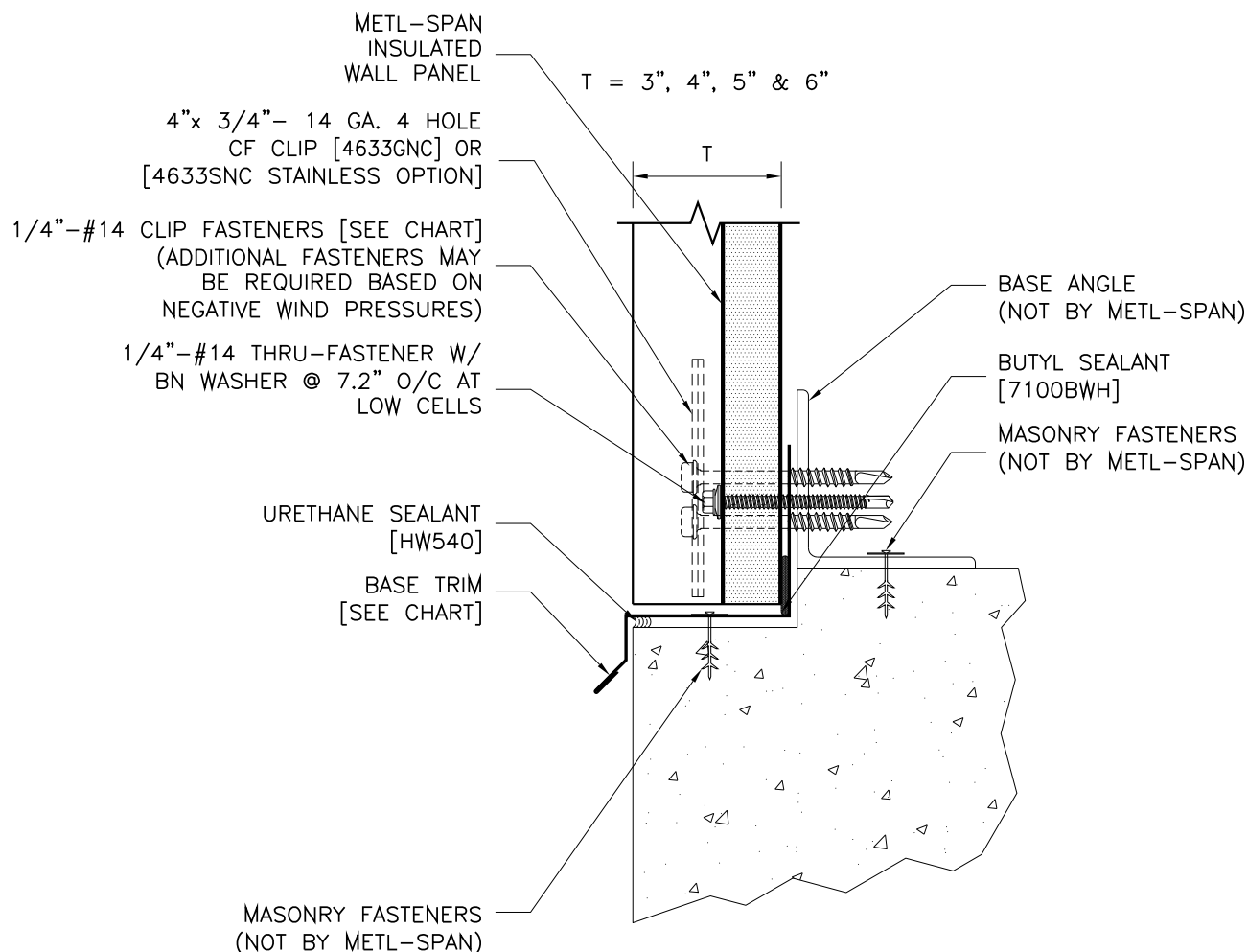


REFER TO SHEET "CI-INFO" FOR ADDITIONAL INFORMATION REGARDING THE APPLICATION OF SEALANTS, FASTENERS, AND CLOSURE MATERIALS.  
CONSULT METL-SPAN TO DETERMINE ALLOWABLE LOAD AND SPACING OF ATTACHMENT FASTENERS.

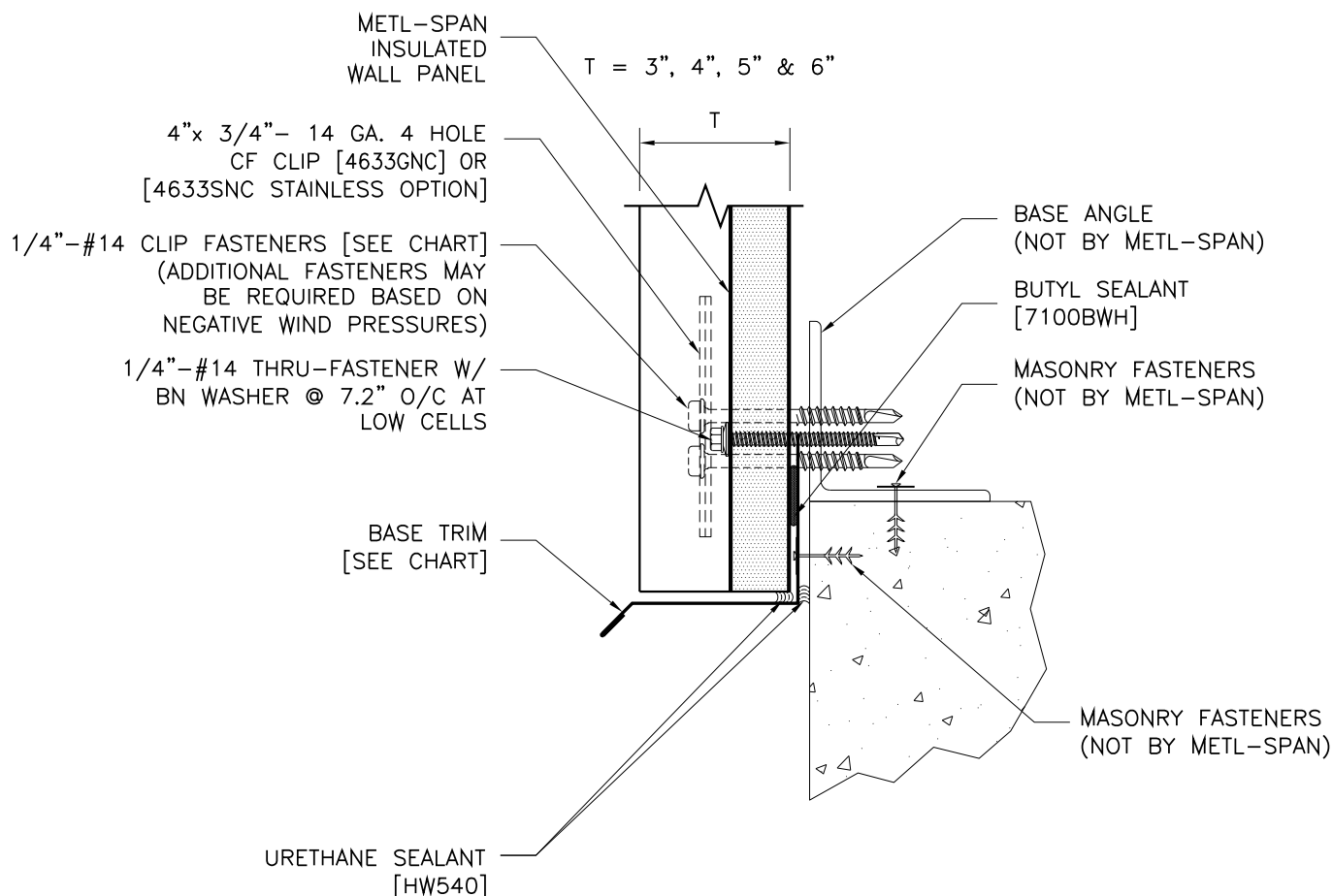
T	BASE TRIM	TEK III CLIP FASTENER	TEK V CLIP FASTENER	TYPE B CLIP FASTENER
3"	F5005	1624PNC	1732PNC	1824PNC
4"	F5036	1632PNC	1740PNC	1832PNC
5"	F5055	1640PNC	1748PNC	1840PNC
6"	F4026	1648PNC	1756PNC	1848PNC
7.2 INSUL-RIB FLUSH BASE DETAIL WITH DRIP TRIM		VERTICAL APPLICATION: COMMERCIAL & INDUSTRIAL		7.2-BE-01 DATE: June 6, 2016





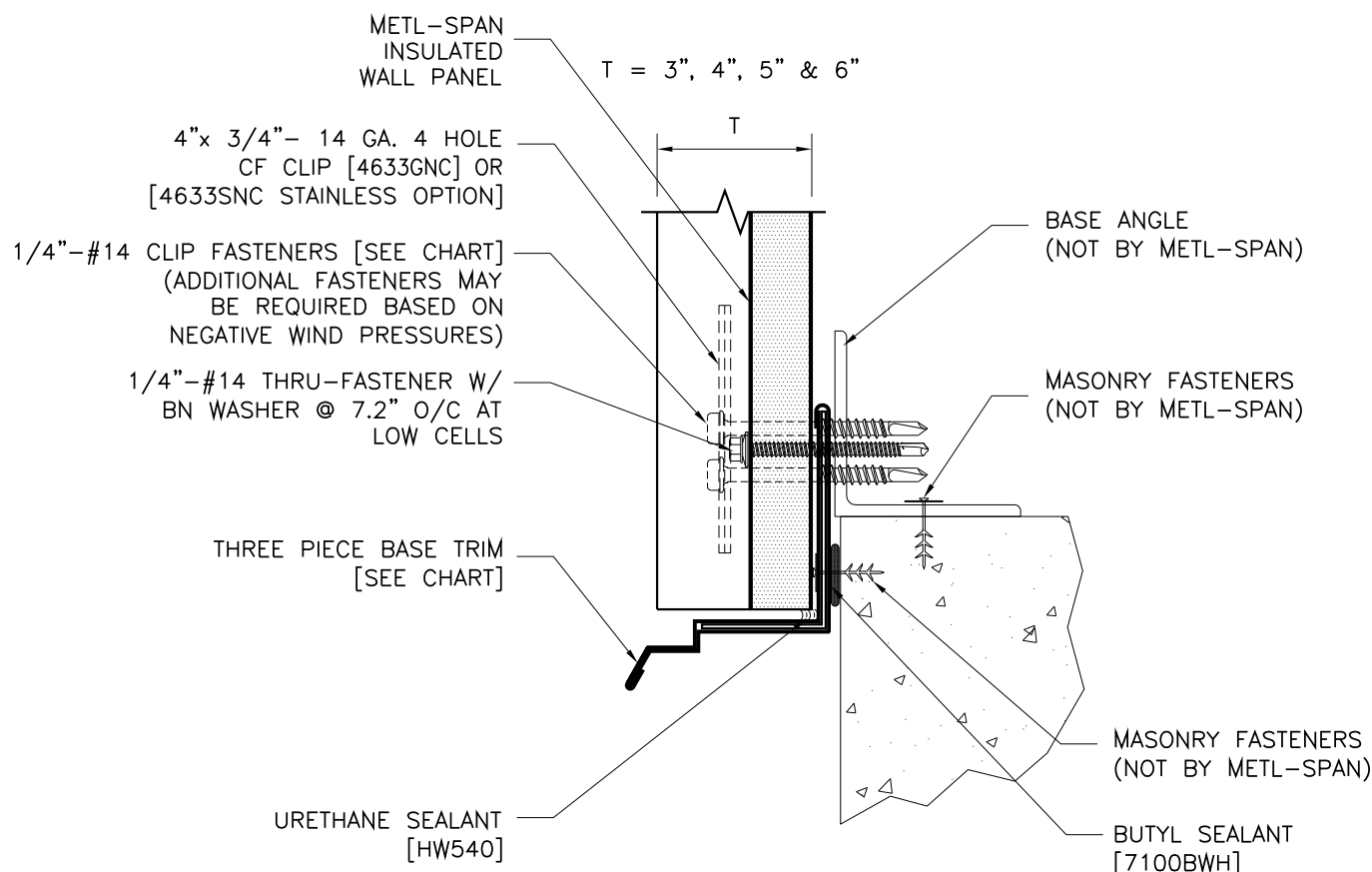
REFER TO SHEET "CI-INFO" FOR ADDITIONAL INFORMATION REGARDING THE  
APPLICATION OF SEALANTS, FASTENERS, AND CLOSURE MATERIALS.  
CONSULT METL-SPAN TO DETERMINE ALLOWABLE LOAD AND SPACING OF ATTACHMENT FASTENERS.

T	BASE TRIM	TEK III CLIP FASTENER	TEK V CLIP FASTENER	TYPE B CLIP FASTENER
3"	F5005	1624PNC	1732PNC	1824PNC
4"	F5036	1632PNC	1740PNC	1832PNC
5"	F5055	1640PNC	1748PNC	1840PNC
6"	F4026	1648PNC	1756PNC	1848PNC
7.2 INSUL-RIB NOTCH BASE DETAIL WITH LAP TRIM		VERTICAL APPLICATION: COMMERCIAL & INDUSTRIAL		7.2-BE-04 DATE: June 6, 2015



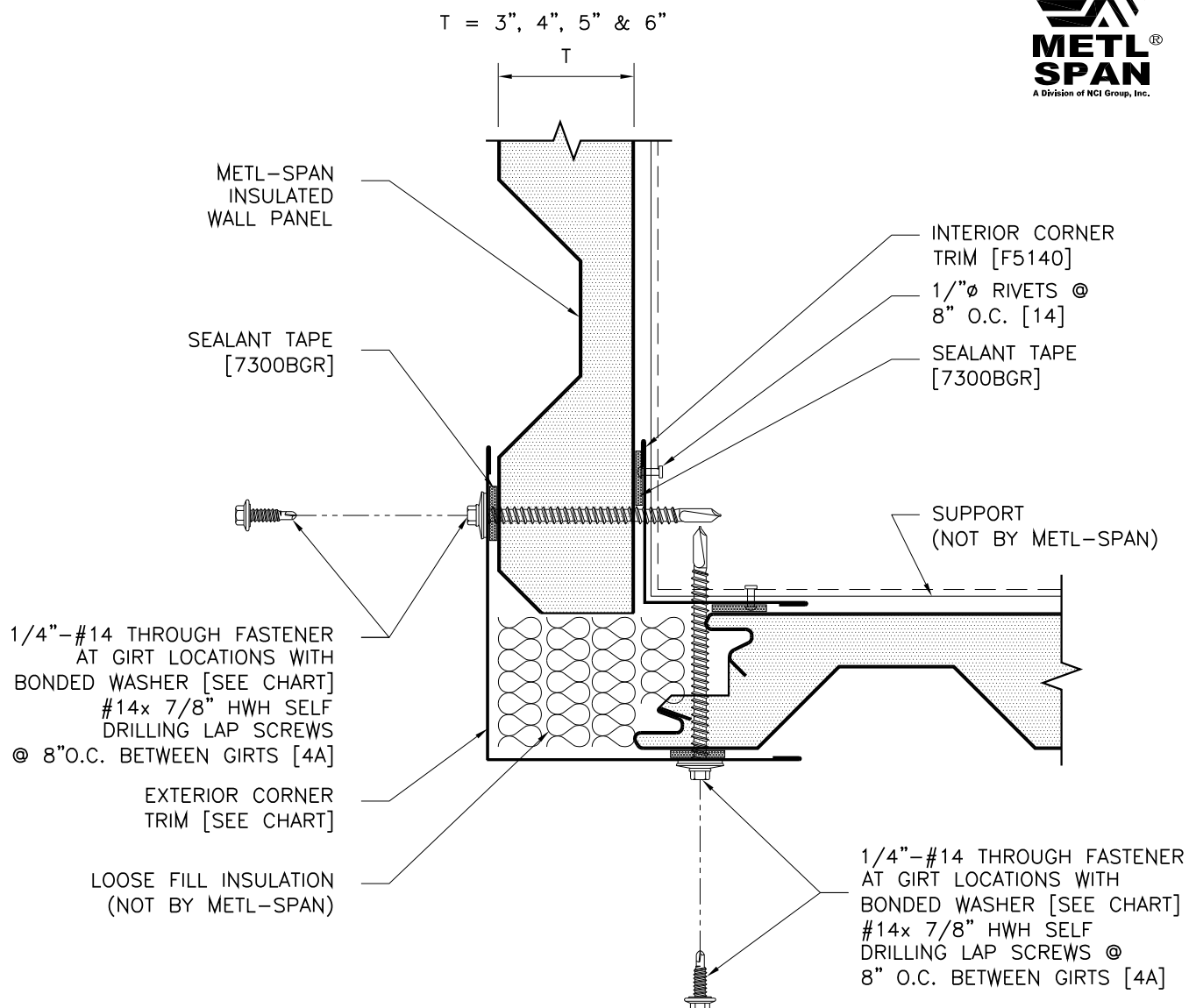
REFER TO SHEET "CI-INFO" FOR ADDITIONAL INFORMATION REGARDING THE APPLICATION OF SEALANTS, FASTENERS, AND CLOSURE MATERIALS.  
CONSULT METL-SPAN TO DETERMINE ALLOWABLE LOAD AND SPACING OF ATTACHMENT FASTENERS.

T	BASE TRIM	TEK III CLIP FASTENER	TEK V CLIP FASTENER	TYPE B CLIP FASTENER
3"	F5005	1624PNC	1732PNC	1824PNC
4"	F5036	1632PNC	1740PNC	1832PNC
5"	F5055	1640PNC	1748PNC	1840PNC
6"	F4026	1648PNC	1756PNC	1848PNC
7.2 INSUL-RIB OVERHANG BASE DETAIL WITH DRIP TRIM		VERTICAL APPLICATION: COMMERCIAL & INDUSTRIAL		7.2-BE-05 DATE: June 6, 2014



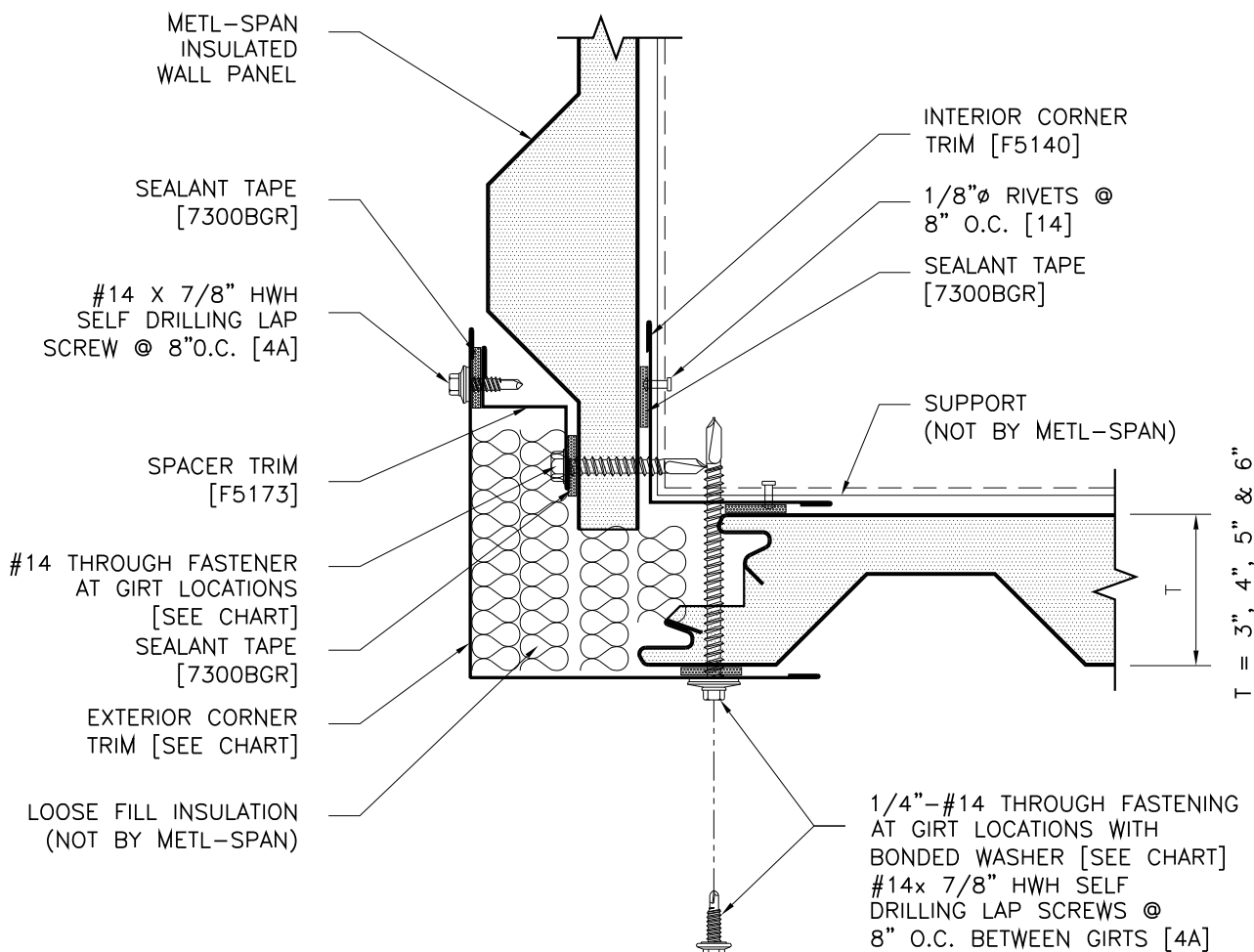
REFER TO SHEET "CI-INFO" FOR ADDITIONAL INFORMATION REGARDING THE APPLICATION OF SEALANTS, FASTENERS, AND CLOSURE MATERIALS.  
CONSULT METL-SPAN TO DETERMINE ALLOWABLE LOAD AND SPACING OF ATTACHMENT FASTENERS.

T	THREE PIECE BASE TRIM	TEK III CLIP FASTENER	TEK V CLIP FASTENER	TYPE B CLIP FASTENER
3"	F5042	1624PNC	1732PNC	1824PNC
4"	F5062	1632PNC	1740PNC	1832PNC
5"	--	1640PNC	1748PNC	1840PNC
6"	--	1648PNC	1756PNC	1848PNC
7.2 INSUL-RIB OVERHANG BASE DETAIL WITH WRAPPED TRIM		VERTICAL APPLICATION: COMMERCIAL & INDUSTRIAL		7.2-BE-06 DATE: June 6, 2016



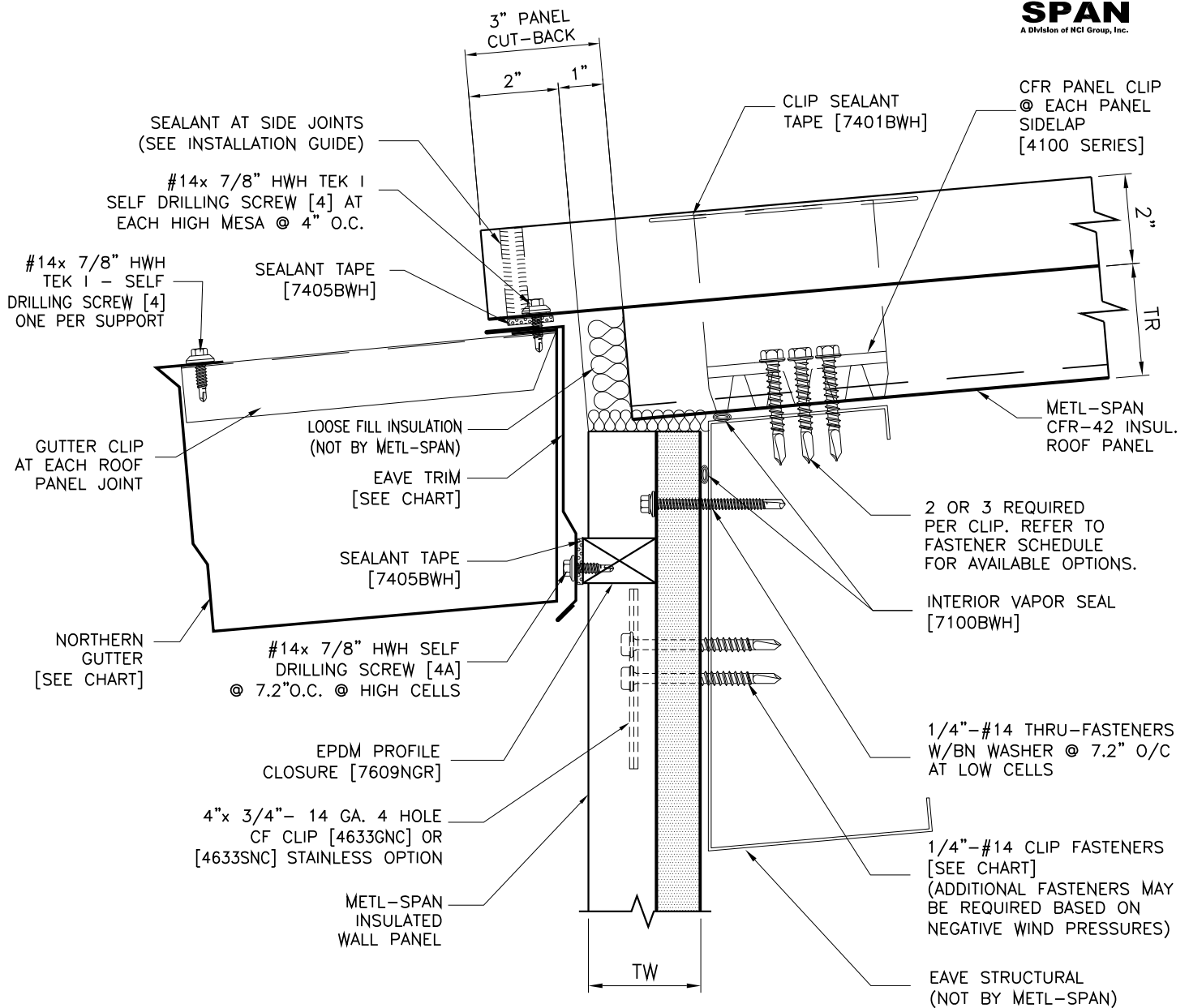
REFER TO SHEET "CI-INFO" FOR ADDITIONAL INFORMATION REGARDING THE APPLICATION OF SEALANTS, FASTENERS, AND CLOSURE MATERIALS.  
CONSULT METL-SPAN TO DETERMINE ALLOWABLE LOAD AND SPACING OF ATTACHMENT FASTENERS.

T	EXTERIOR CORNER TRIM	THRU-FASTENER TEK III	THRU-FASTENER TEK V	THRU-FASTENER TYPE B
3"	F5104	1132P	1240P	1332P
4"	F5101	1140P	1248P	1340P
5"	F5124	1148P	1256P	1348P
6"	F5125	1156P	1264P	1356P
7.2 INSUL-RIB OUTSIDE CORNER WITH TRIM		VERTICAL APPLICATION: COMMERCIAL & INDUSTRIAL		7.2-CE-01 DATE: June 6, 2016



REFER TO SHEET "CI-INFO" FOR ADDITIONAL INFORMATION REGARDING THE APPLICATION OF SEALANTS, FASTENERS, AND CLOSURE MATERIALS.  
CONSULT METL-SPAN TO DETERMINE ALLOWABLE LOAD AND SPACING OF ATTACHMENT FASTENERS.

T	EXTERIOR CORNER TRIM	THRU-FASTENER TEK III	THRU-FASTENER TEK V	THRU-FASTENER TYPE B
3"	F5104	1132P	1240P	1332P
4"	F5101	1140P	1248P	1340P
5"	F5124	1148P	1256P	1348P
6"	F5125	1156P	1264P	1356P
7.2 INSUL-RIB OUTSIDE CORNER WITH SPACER TRIM		VERTICAL APPLICATION: COMMERCIAL & INDUSTRIAL		7.2-CE-02 DATE: June 6, 2016



REFER TO SHEET "CI-INFO" FOR ADDITIONAL INFORMATION REGARDING THE APPLICATION OF SEALANTS, FASTENERS, AND CLOSURE MATERIALS.  
CONSULT METL-SPAN TO DETERMINE ALLOWABLE LOAD AND SPACING OF ATTACHMENT FASTENERS.

TR	EAVE TRIM	NORTHERN GUTTER
2.5"	F3615	F3903
3"	F3615	F3903
4"	F3616	F3906
5"	F3616	F3906
6"	F3617	F3909

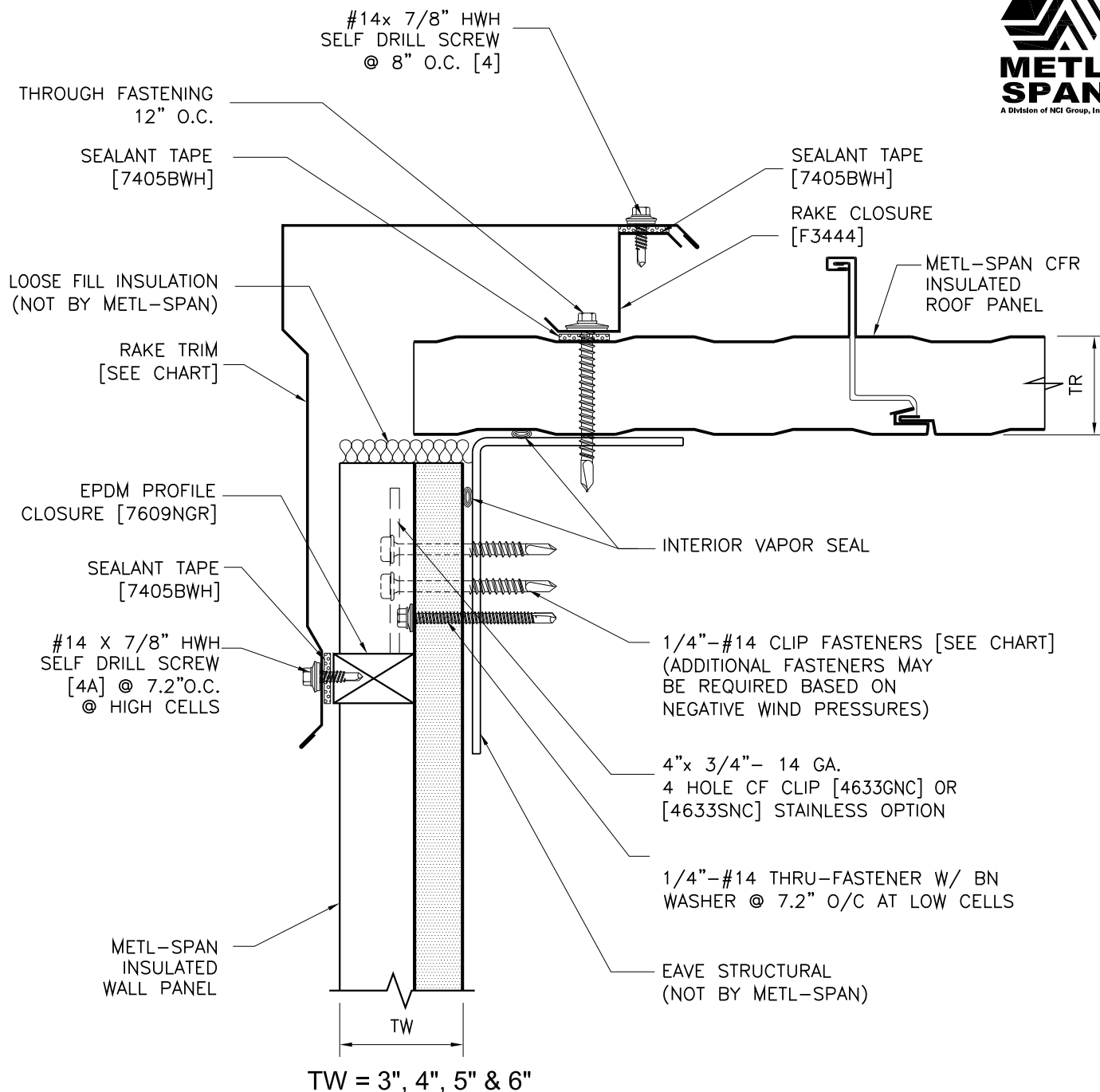
TW	TEK III CF-CLIP FASTENER	TEK V CF-CLIP FASTENER	TYPE B CF-CLIP FASTENER
3"	1624PNC	1732PNC	1824PNC
4"	1632PNC	1740PNC	1832PNC
5"	1640PNC	1748PNC	1840PNC
6"	1648PNC	1756PNC	1848PNC

7.2 INSUL-RIB EAVE DETAIL  
WITH NORTHERN GUTTER

VERTICAL APPLICATION:  
COMMERCIAL & INDUSTRIAL

7.2-CFR-01  
DATE: June 6, 2016





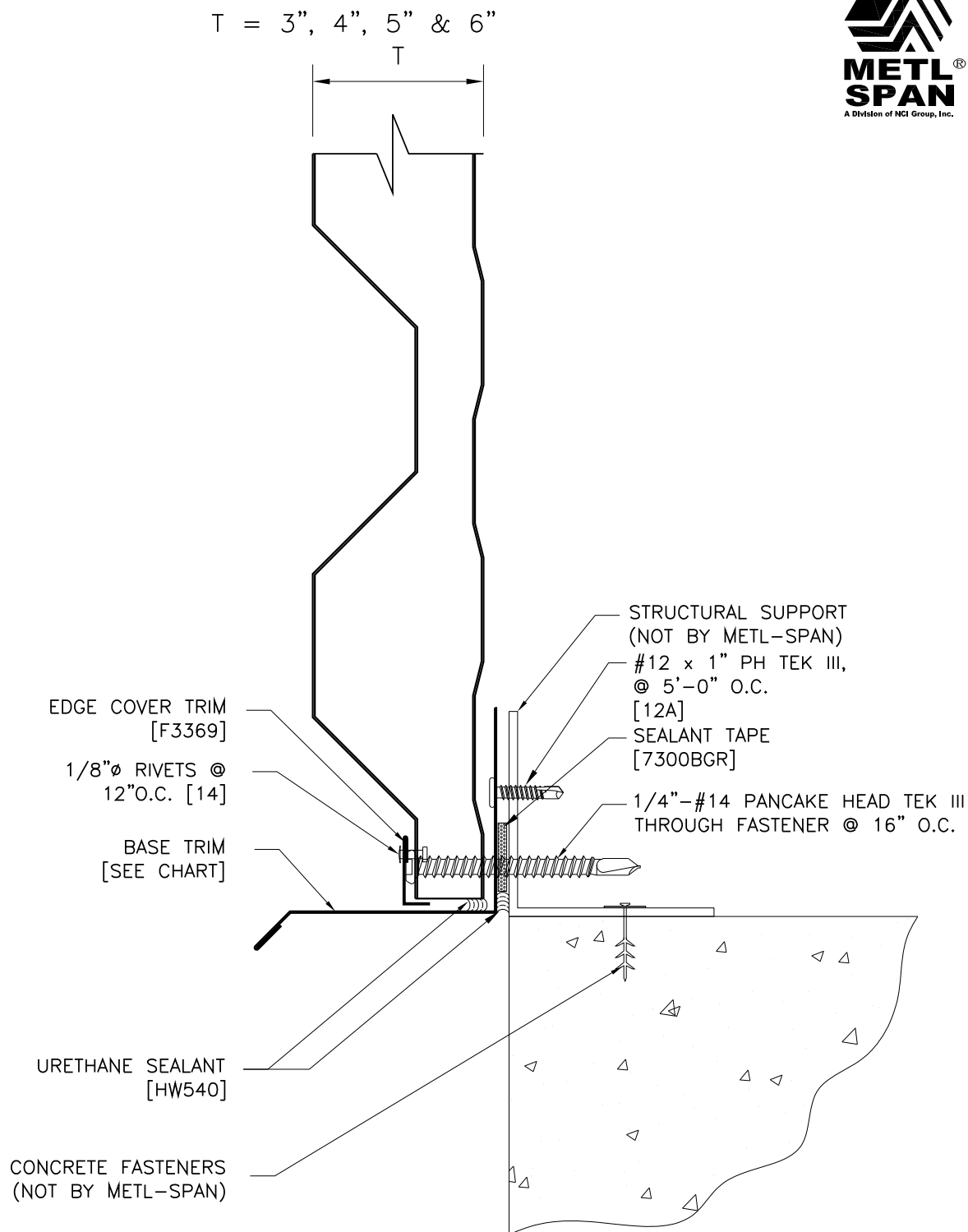
REFER TO SHEET "CI-INFO" FOR ADDITIONAL INFORMATION REGARDING THE APPLICATION OF SEALANTS, FASTENERS, AND CLOSURE MATERIALS.  
CONSULT METL-SPAN TO DETERMINE ALLOWABLE LOAD AND SPACING OF ATTACHMENT FASTENERS.

TW	RAKE FLASHING	RAKE FLASHING	RAKE FLASHING	TEK III CF-CLIP FASTENER	TEK V CF-CLIP FASTENER	TYPE B CF-CLIP FASTENER
	TR 2.5 & 3"	TR 4" & 5"	TR 6"			
3"	F3430	F3431	F3432	1624PNC	1732PNC	1824PNC
4"	F3433	F3434	F3435	1632PNC	1740PNC	1832PNC
5"	F3433	F3434	F3435	1640PNC	1748PNC	1840PNC
6"	F3330	F3331	F3332	1648PNC	1756PNC	1848PNC

7.2 INSUL-RIB  
RAKE DETAIL

VERTICAL APPLICATION:  
COMMERCIAL & INDUSTRIAL

7.2-CFR-02  
DATE: June 6, 2016



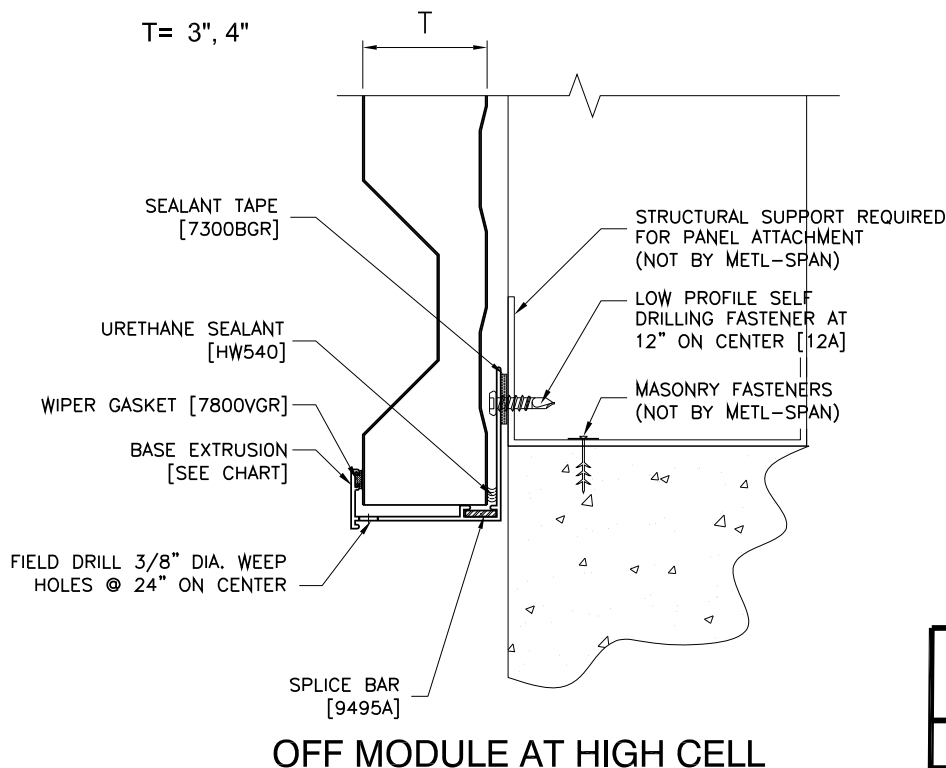
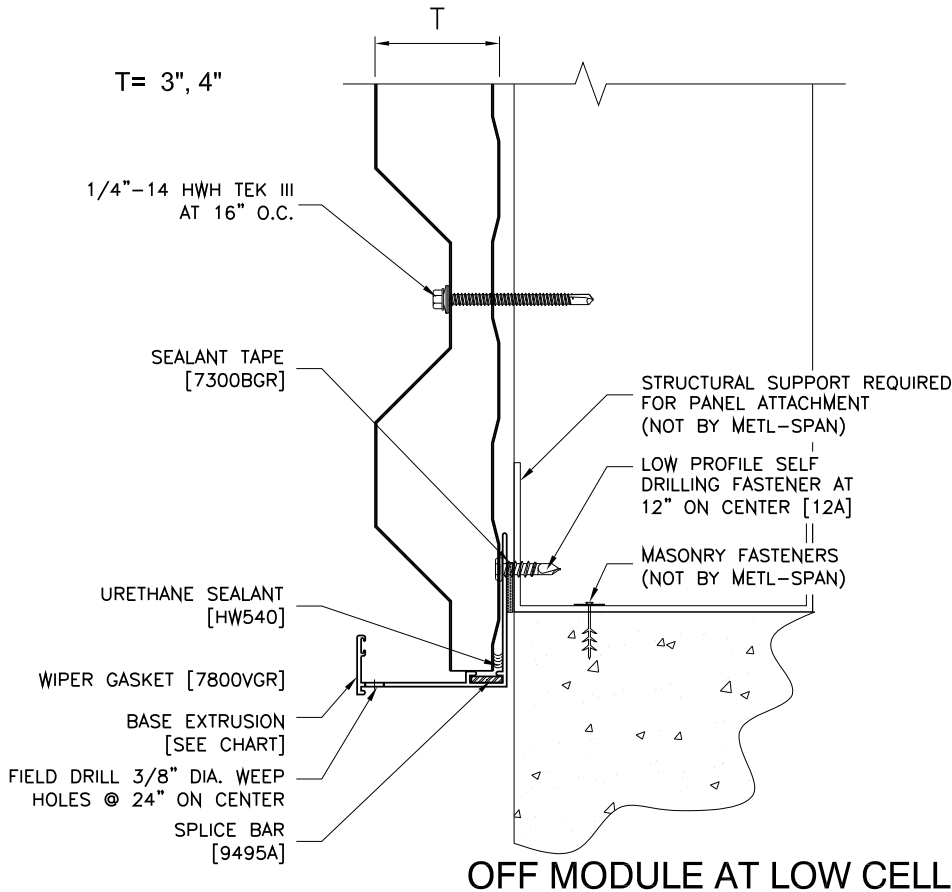
T	BASE TRIM	PANCAKE HEAD TEK III FASTENER
3"	F5005	1432PNC
4"	F5036	1440PNC
5"	F5055	1448PNC
6"	F4026	1456PNC

REFER TO SHEET "CI-INFO" FOR ADDITIONAL INFORMATION REGARDING THE APPLICATION OF SEALANTS, FASTENERS, AND CLOSURE MATERIALS. CONSULT METL-SPAN TO DETERMINE ALLOWABLE LOAD AND S PACING OF ATTACHMENT FASTENERS.

**7.2 INSUL-RIB OVERHANG  
BASE DETAIL WITH TRIM**

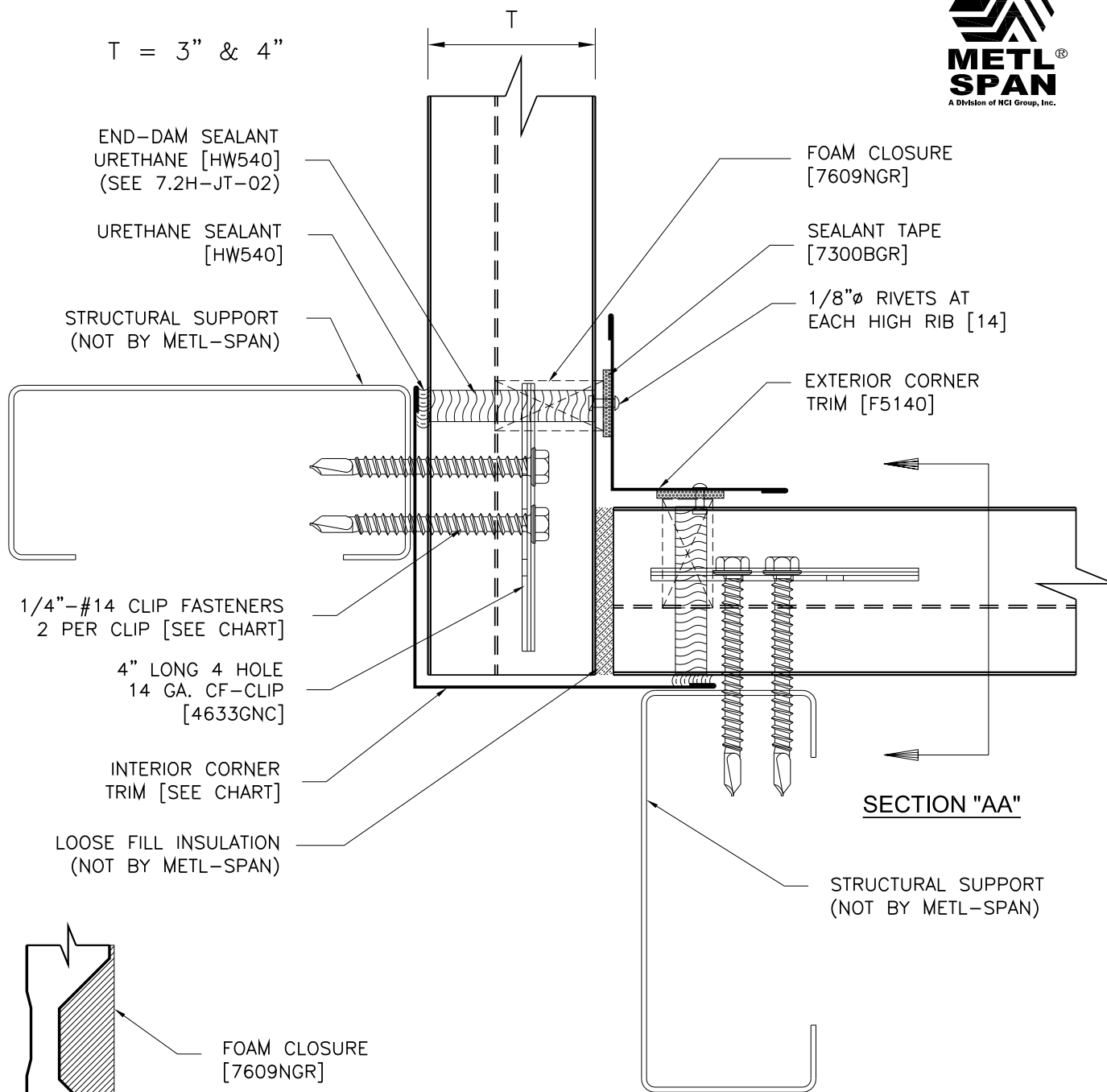
**HORIZONTAL APPLICATION:  
COMMERCIAL & INDUSTRIAL**

**7.2H-BE-02**  
DATE: June 9, 2016



REFER TO SHEET "CI-INFO" FOR  
ADDITIONAL INFORMATION  
REGARDING THE APPLICATION  
OF SEALANTS, FASTENERS, AND  
CLOSURE MATERIALS. CONSULT  
METL-SPAN TO DETERMINE  
ALLOWABLE LOAD AND SPACING  
OF ATTACHMENT FASTENERS.

T	BASE EXTRUSION
3"	9407ANC
4"	9404ANC



REFER TO SHEET "CI-INFO" FOR ADDITIONAL INFORMATION REGARDING THE APPLICATION OF SEALANTS, FASTENERS, AND CLOSURE MATERIALS. CONSULT METL-SPAN TO DETERMINE LOWABLE LOAD AND SPACING OF ATTACHMENT FASTENERS.

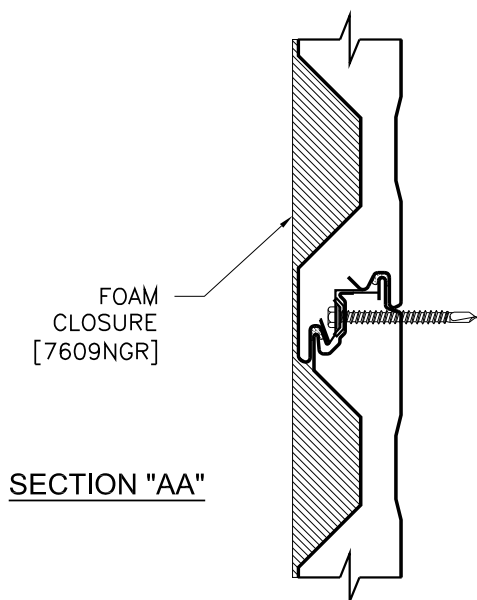
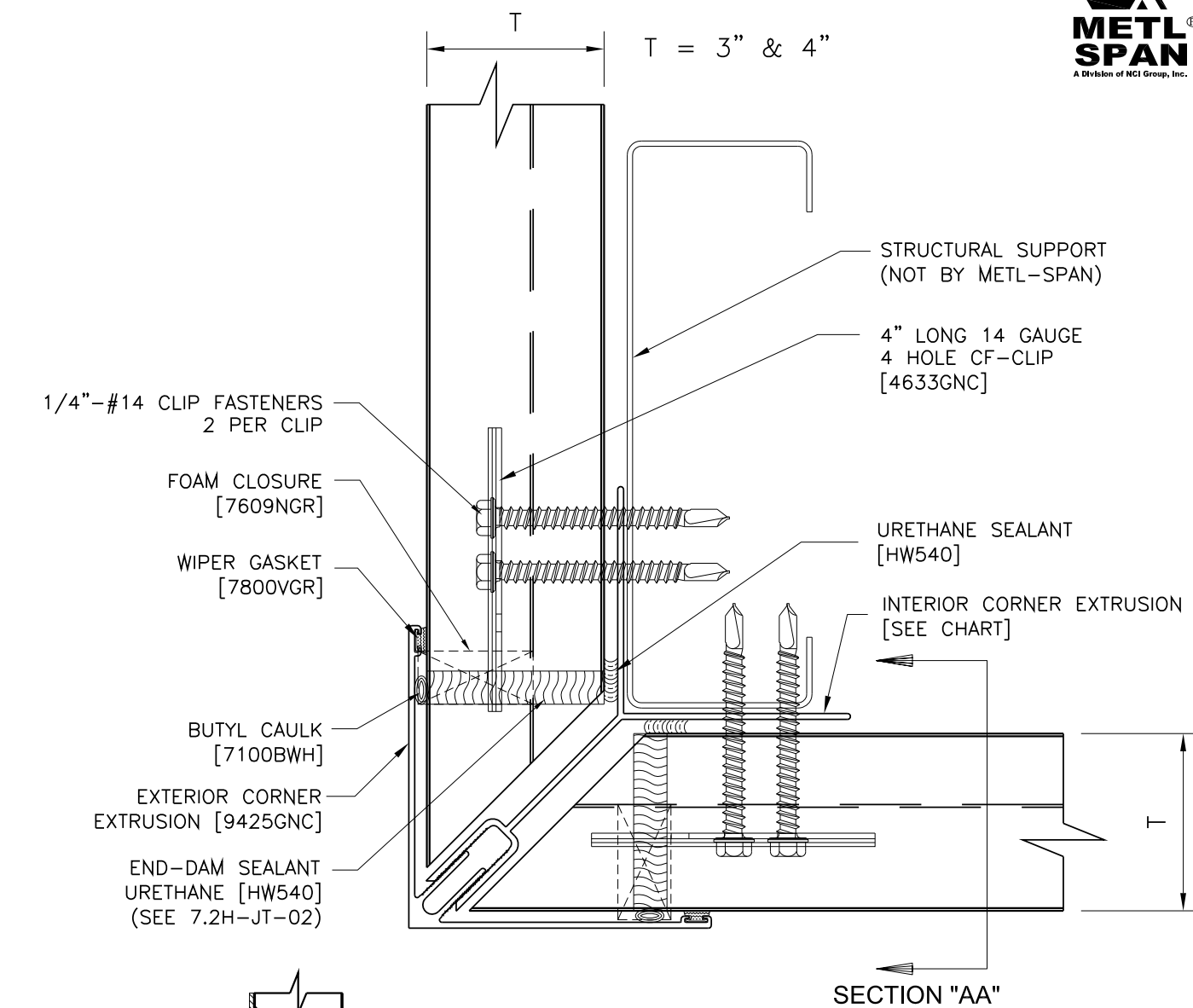
SECTION "AA"

T	INTERIOR CORNER TRIM	TEK III CLIP FASTENER	TEK V CLIP FASTENER
3"	F5104	1624PNC	1732PNC
4"	F5101	1632PNC	1740PNC

7.2 INSUL-RIB INSIDE  
CORNER DETAIL WITH TRIM

HORIZONTAL APPLICATION:  
COMMERCIAL & INDUSTRIAL

7.2H-CE-02  
DATE: June 9, 2016



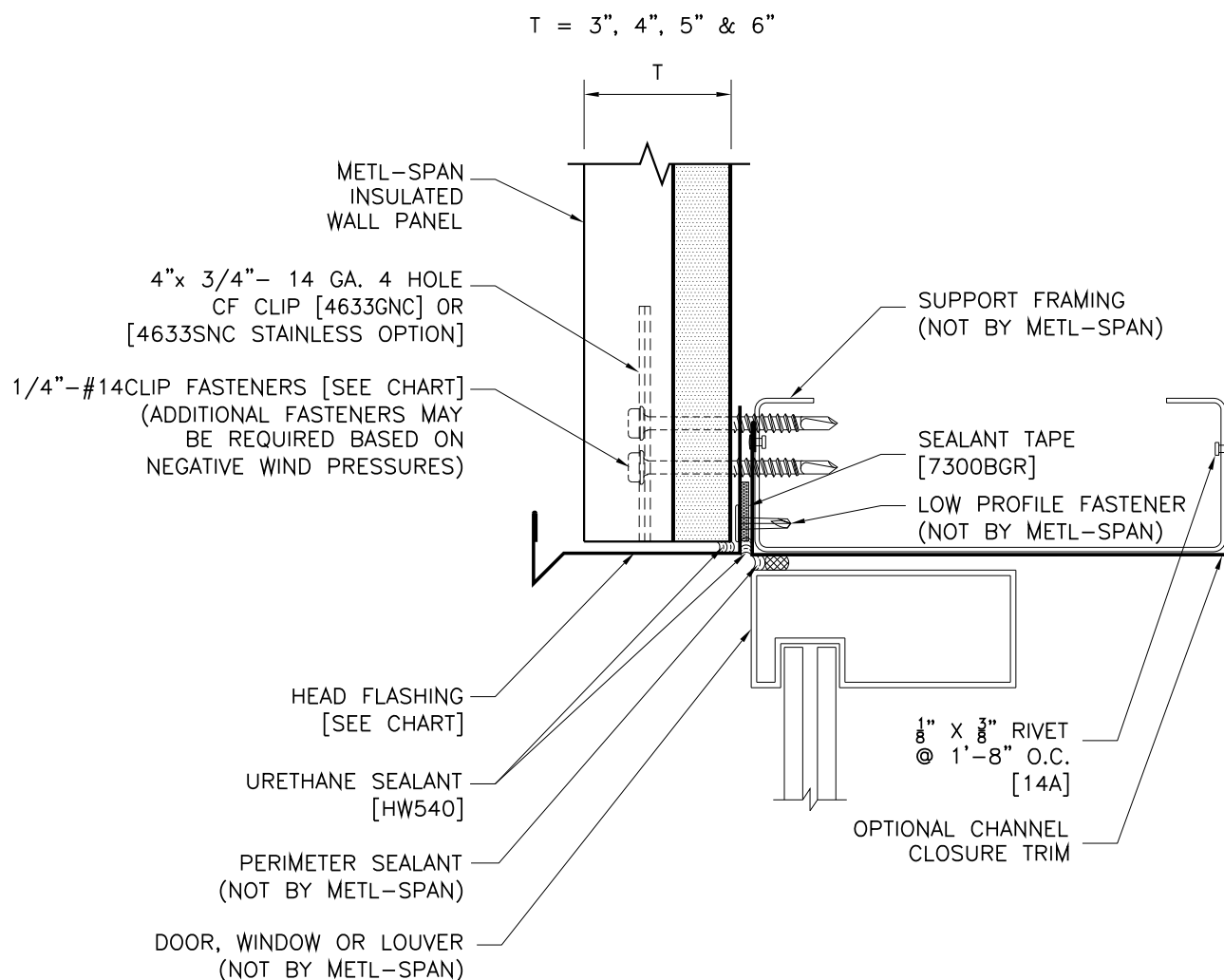
REFER TO SHEET "CI-INFO" FOR ADDITIONAL INFORMATION REGARDING THE APPLICATION OF SEALANTS, FASTENERS, AND CLOSURE MATERIALS. CONSULT METL-SPAN TO DETERMINE ALLOWABLE LOAD AND SPACING OF ATTACHMENT FASTENERS.

T	INTERIOR CORNER EXTRUSION	TEK III CLIP FASTENER	TEK V CLIP FASTENER
3"	9432ANC	1624PNC	1732PNC
4"	9433ANC	1632PNC	1740PNC

7.2 INSUL-RIB OUTSIDE  
CORNER DETAIL  
WITH EXTRUSION

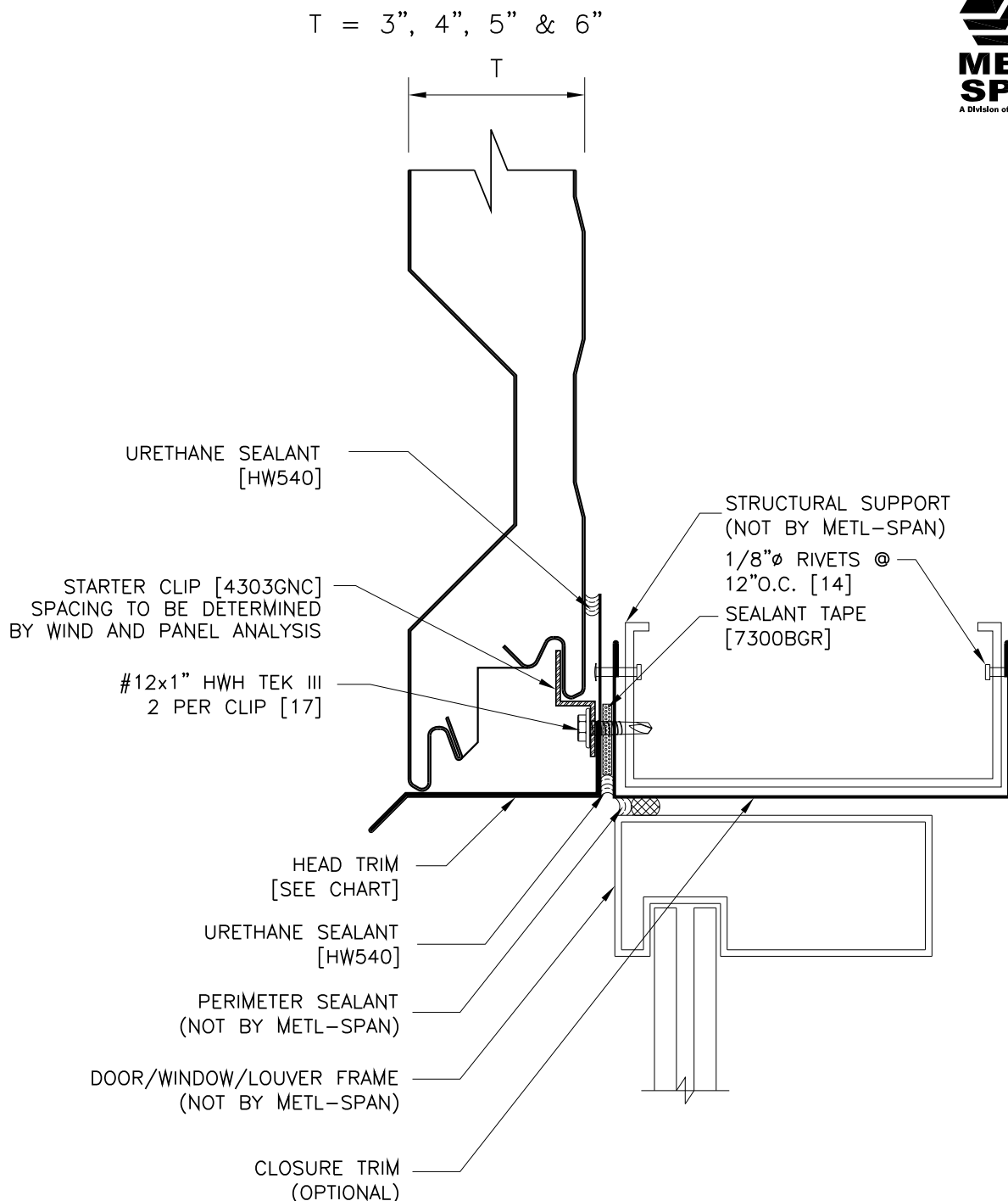
HORIZONTAL APPLICATION:  
COMMERCIAL & INDUSTRIAL

7.2H-CE-03  
DATE: June 9, 2016



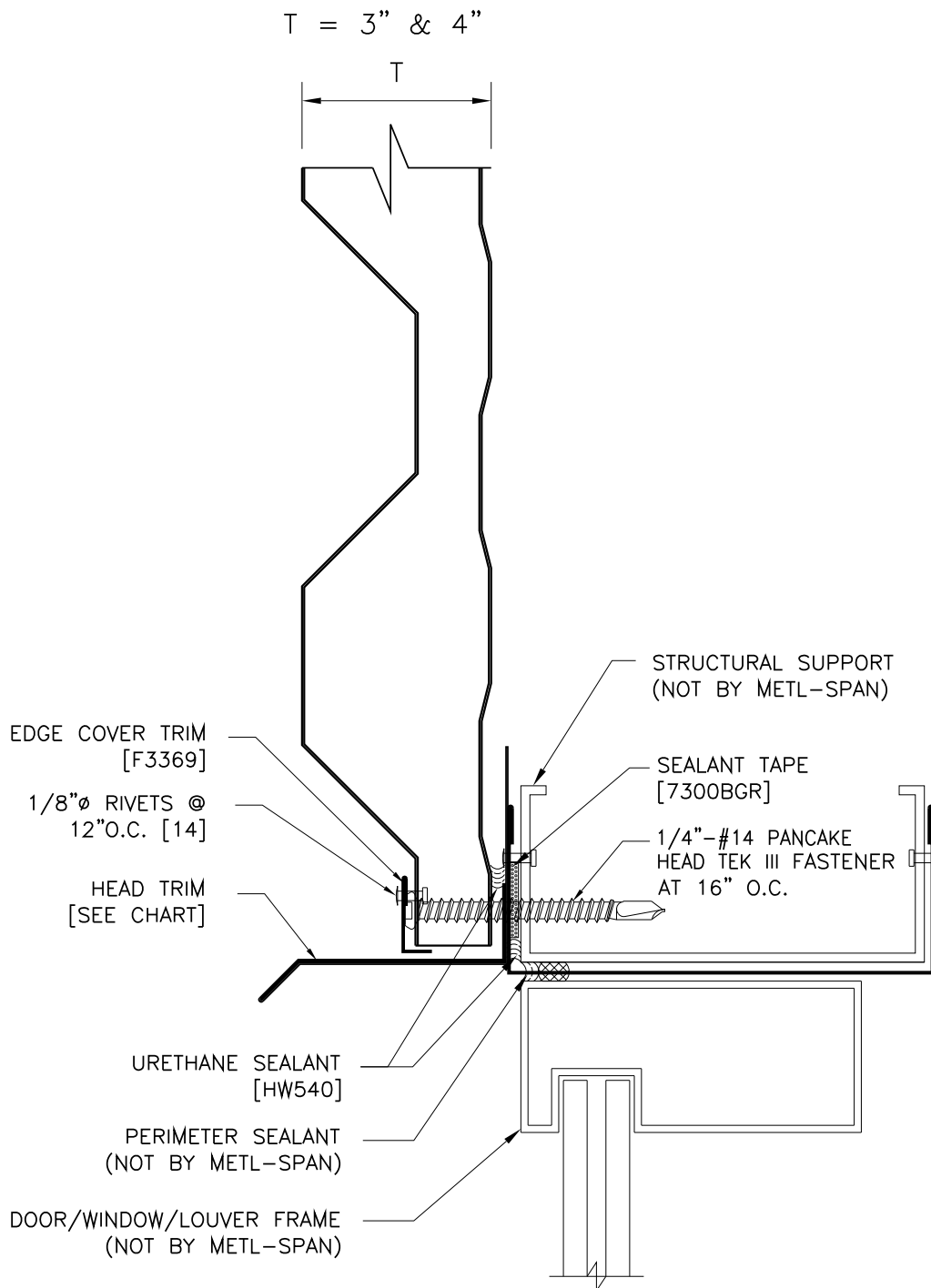
REFER TO SHEET "CI-INFO" FOR ADDITIONAL INFORMATION REGARDING THE APPLICATION OF SEALANTS, FASTENERS, AND CLOSURE MATERIALS.  
CONSULT METL-SPAN TO DETERMINE ALLOWABLE LOAD AND SPACING OF ATTACHMENT FASTENERS.

T	HEAD TRIM	TEK III CLIP FASTENER	TEK V CLIP FASTENER	TYPE B CLIP FASTENER
3"	F3242	1624PNC	1732PNC	1824PNC
4"	F3243	1632PNC	1740PNC	1832PNC
5"	F3245	1640PNC	1748PNC	1840PNC
6"	F3246	1648PNC	1756PNC	1848PNC
7.2 INSUL-RIB HEAD DETAIL WITH TRIM		VERTICAL APPLICATION: COMMERCIAL & INDUSTRIAL		7.2-HD-01 DATE: June 6, 2016



T	HEAD TRIM
3"	F3291
4"	F3293
5"	F3294
6"	F3295

REFER TO SHEET "CI-INFO" FOR ADDITIONAL INFORMATION REGARDING THE APPLICATION OF SEALANTS, FASTENERS, AND CLOSURE MATERIALS. CONSULT METL-SPAN TO DETERMINE ALLOWABLE LOAD AND SPACING OF ATTACHMENT FASTENERS.



REFER TO SHEET "CI-INFO" FOR ADDITIONAL INFORMATION REGARDING THE APPLICATION OF SEALANTS, FASTENERS, AND CLOSURE MATERIALS.  
CONSULT METL-SPAN TO DETERMINE ALLOWABLE LOAD AND SPACING OF ATTACHMENT FASTENERS.

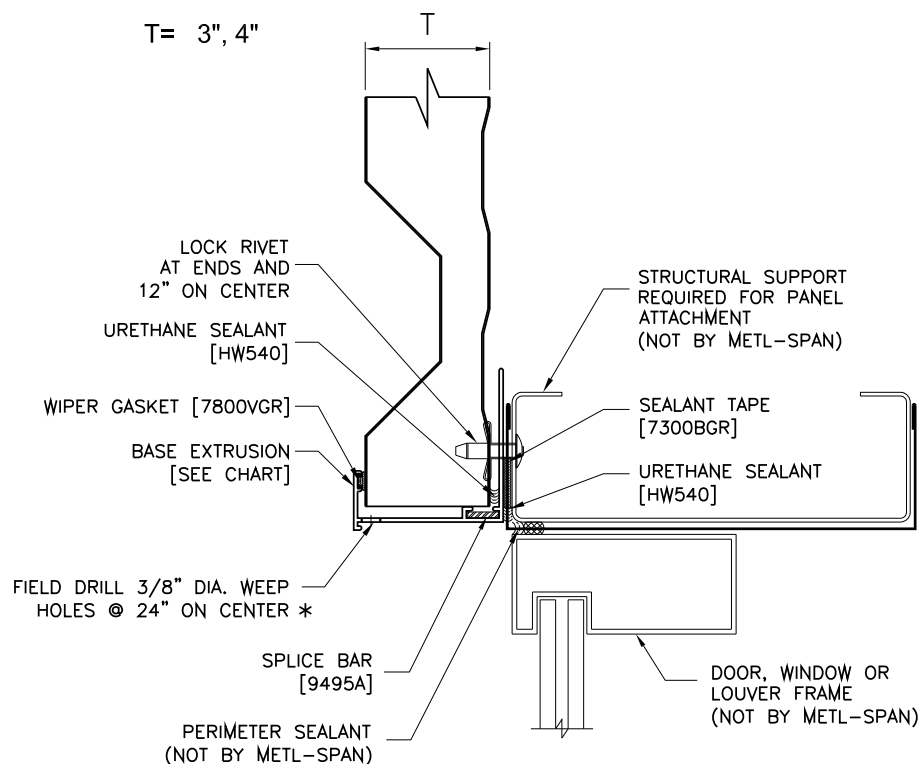
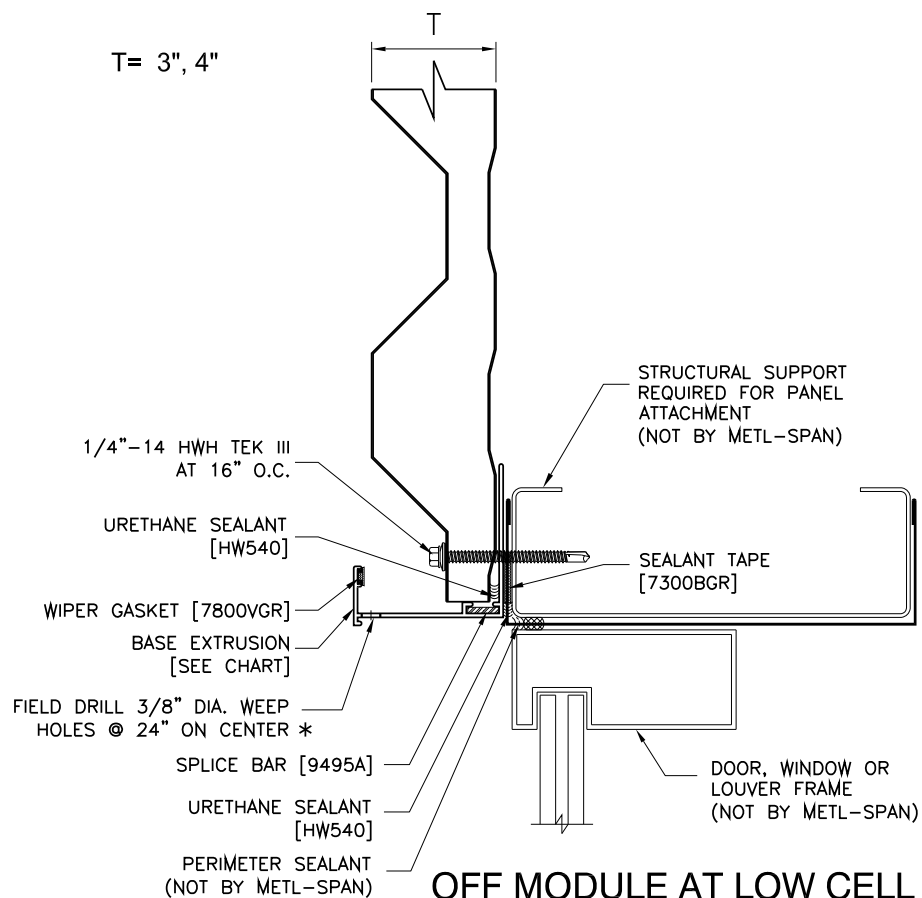
T	HEAD TRIM	PANCAKE HEAD TEK III FASTENER AT LOW CELL	PANCAKE HEAD TEK III FASTENER AT HIGH CELL
3"	F5040	1424PNC	1432PNC
4"	F5059	1432PNC	1440PNC

7.2 INSUL-RIB OFF MODULE  
HEAD DETAIL WITH TRIM

HORIZONTAL APPLICATION:  
COMMERCIAL & INDUSTRIAL

7.2H-HD-02  
DATE: June 9, 2016

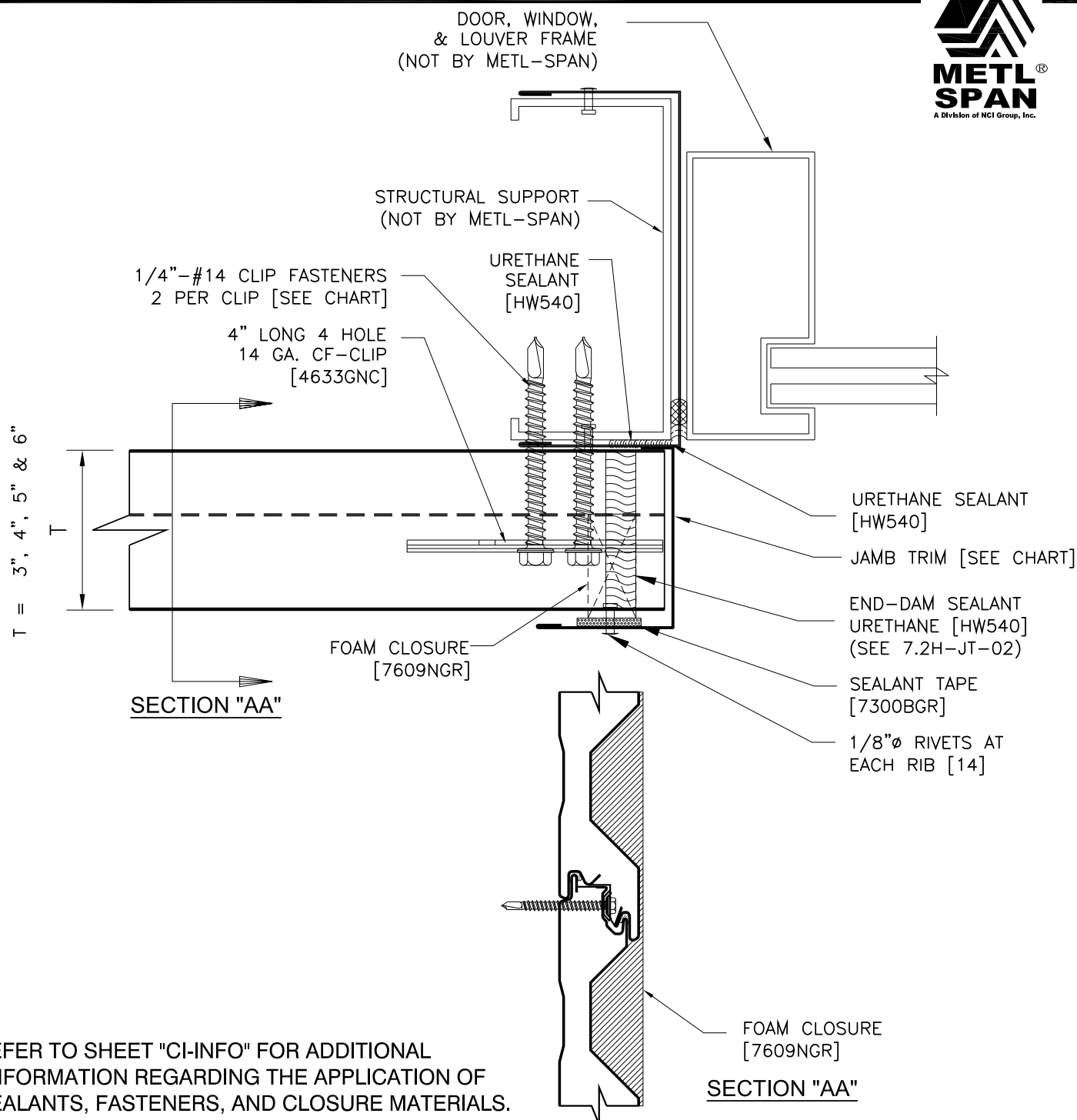




\* WEEP HOLES TO BE  
LOCATED NEAR JAMBS  
OF DOORS.

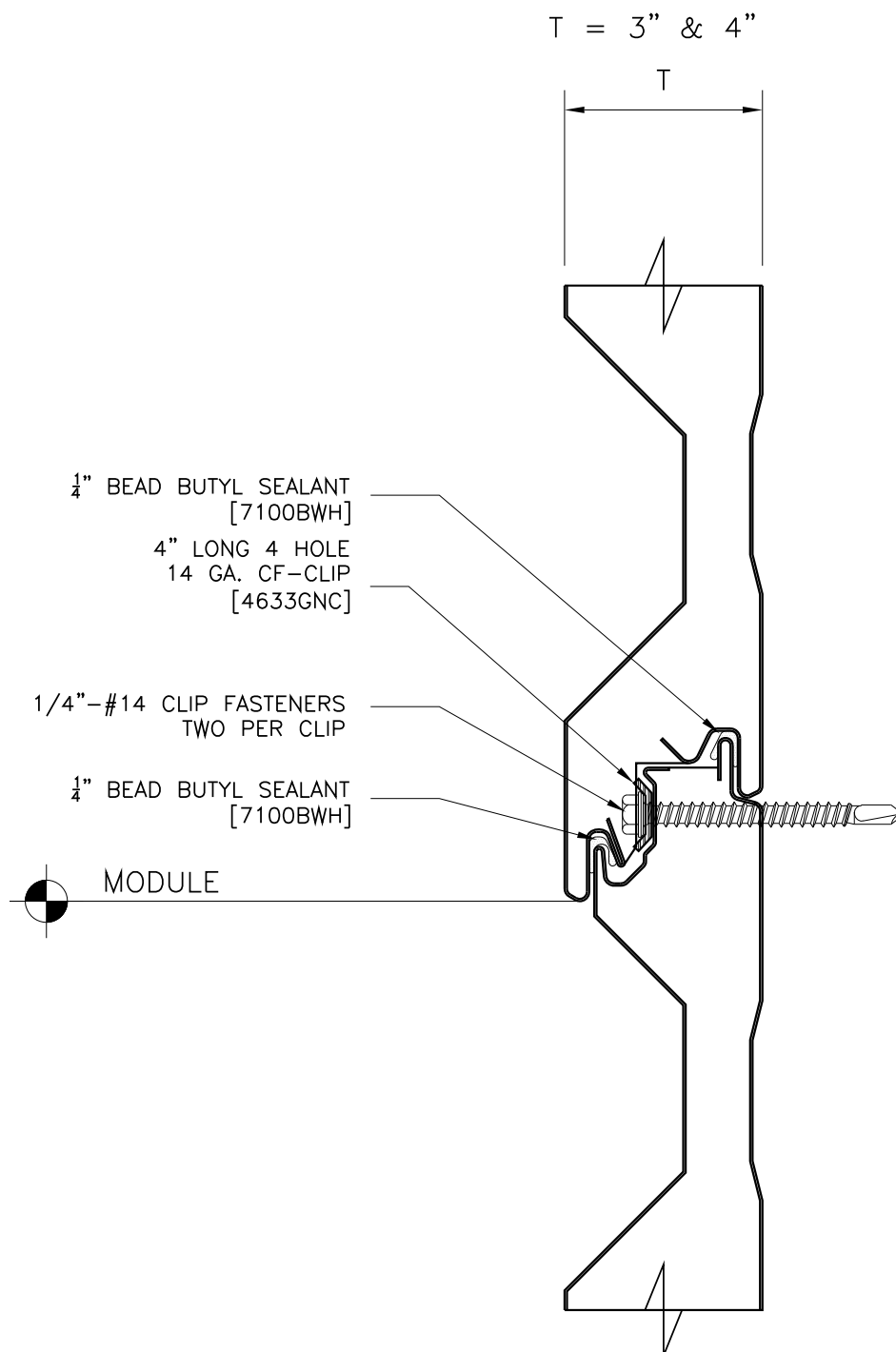
REFER TO SHEET "CI-INFO" FOR  
ADDITIONAL INFORMATION  
REGARDING THE APPLICATION  
OF SEALANTS, FASTENERS, AND  
CLOSURE MATERIALS. CONSULT  
METL-SPAN TO DETERMINE  
ALLOWABLE LOAD AND SPACING  
OF ATTACHMENT FASTENERS.

T	BASE EXTRUSION
3"	9407ANC
4"	9404ANC

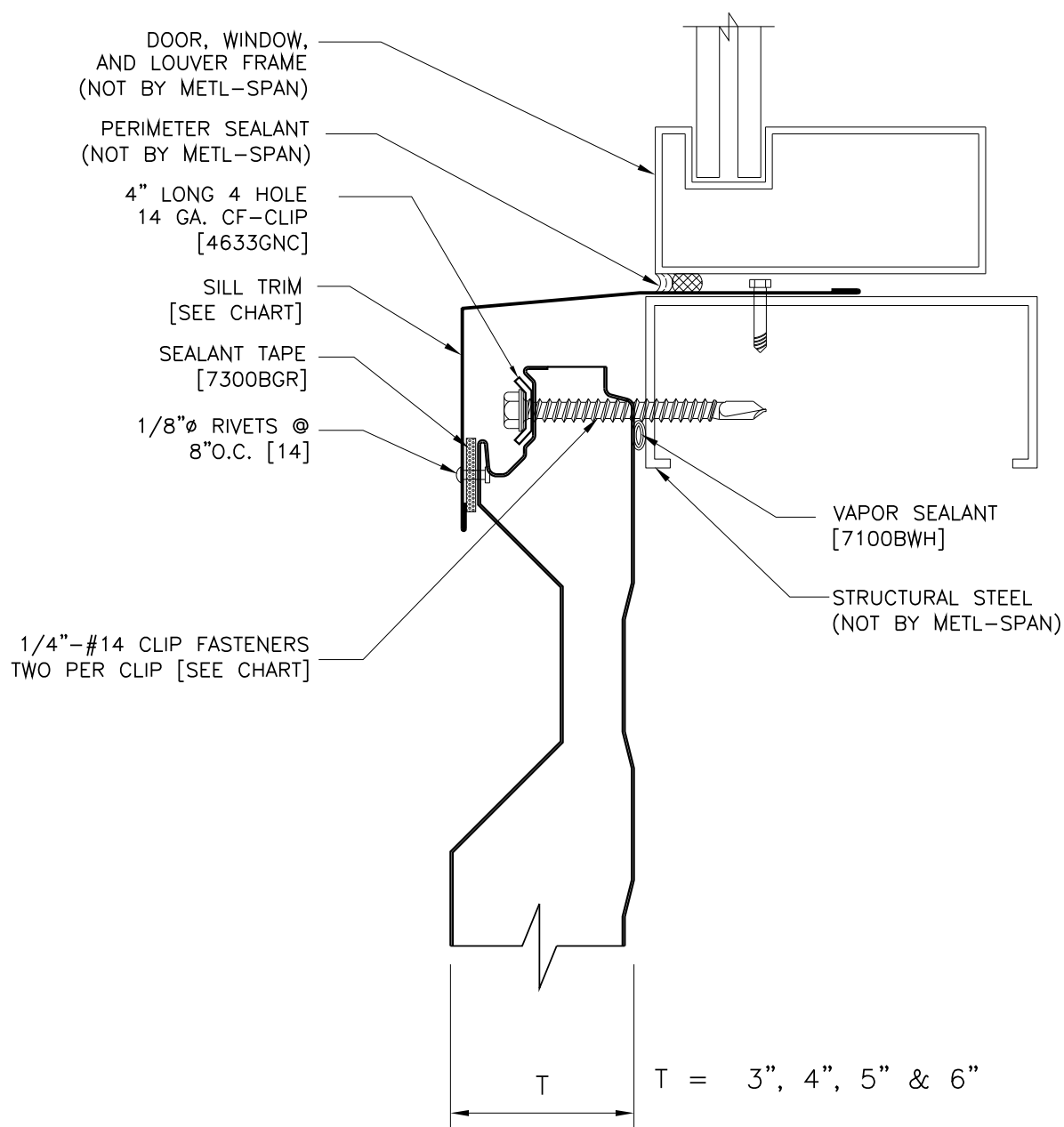


REFER TO SHEET "CI-INFO" FOR ADDITIONAL INFORMATION REGARDING THE APPLICATION OF SEALANTS, FASTENERS, AND CLOSURE MATERIALS. CONSULT METL-SPAN TO DETERMINE ALLOWABLE LOAD AND SPACING OF ATTACHMENT FASTENERS.

T	JAMB TRIM	TEK III CLIP FASTENER	TEK V CLIP FASTENER	TYPE B CLIP FASTENER
3"	F5452	1624PNC	1732PNC	1824PNC
4"	F5454	1632PNC	1740PNC	1832PNC
5"	F5456	1640PNC	1748PNC	1840PNC
6"	F5458	1648PNC	1756PNC	1848PNC
7.2 INSUL-RIB JAMB DETAIL WITH TRIM		HORIZONTAL APPLICATION: COMMERCIAL & INDUSTRIAL		7.2H-JD-01 DATE: June 9, 2016

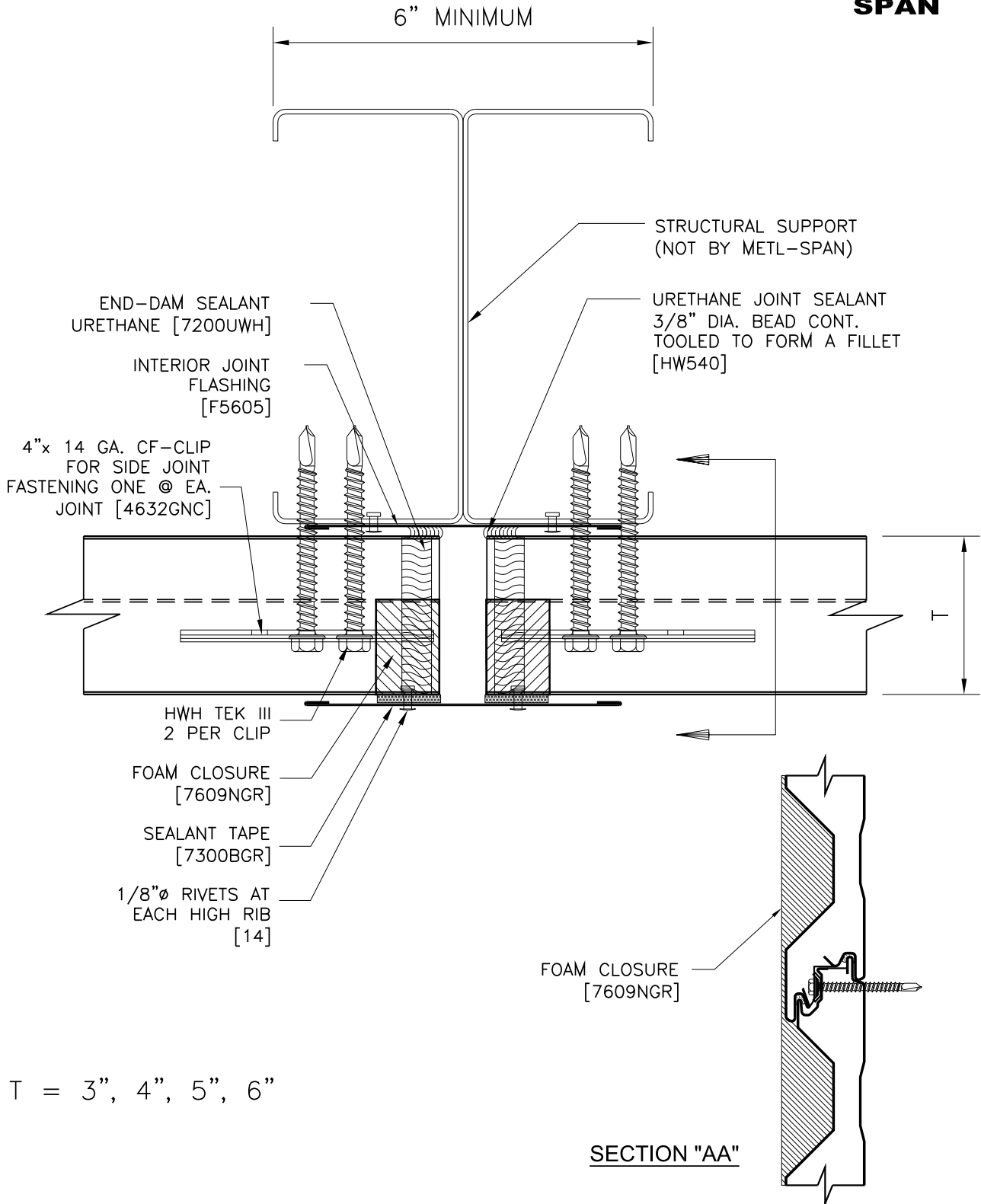


REFER TO SHEET "CS-INFO" FOR ADDITIONAL INFORMATION REGARDING  
THE APPLICATION OF SEALANTS, FASTENERS AND CLOSURE MATERIALS.



REFER TO SHEET "CI-INFO" FOR ADDITIONAL INFORMATION REGARDING THE APPLICATION OF SEALANTS, FASTENERS, AND CLOSURE MATERIALS.  
CONSULT METL-SPAN TO DETERMINE ALLOWABLE LOAD AND SPACING OF ATTACHMENT FASTENERS.

T	SILL TRIM	TEK III THROUGH FASTENER	TEK V THROUGH FASTENER	TYPE B THROUGH FASTENER
3"	F5507	1132P	1240P	1332P
4"	F5509	1140P	1248P	1340P
5"	F4024	1148P	1256P	1348P
6"	F4025	1156P	1264P	1356P
7.2 INSUL-RIB SILL DETAIL WITH TRIM		HORIZONTAL APPLICATION: COMMERCIAL & INDUSTRIAL		7.2H-SD-02 DATE: June 9, 2016



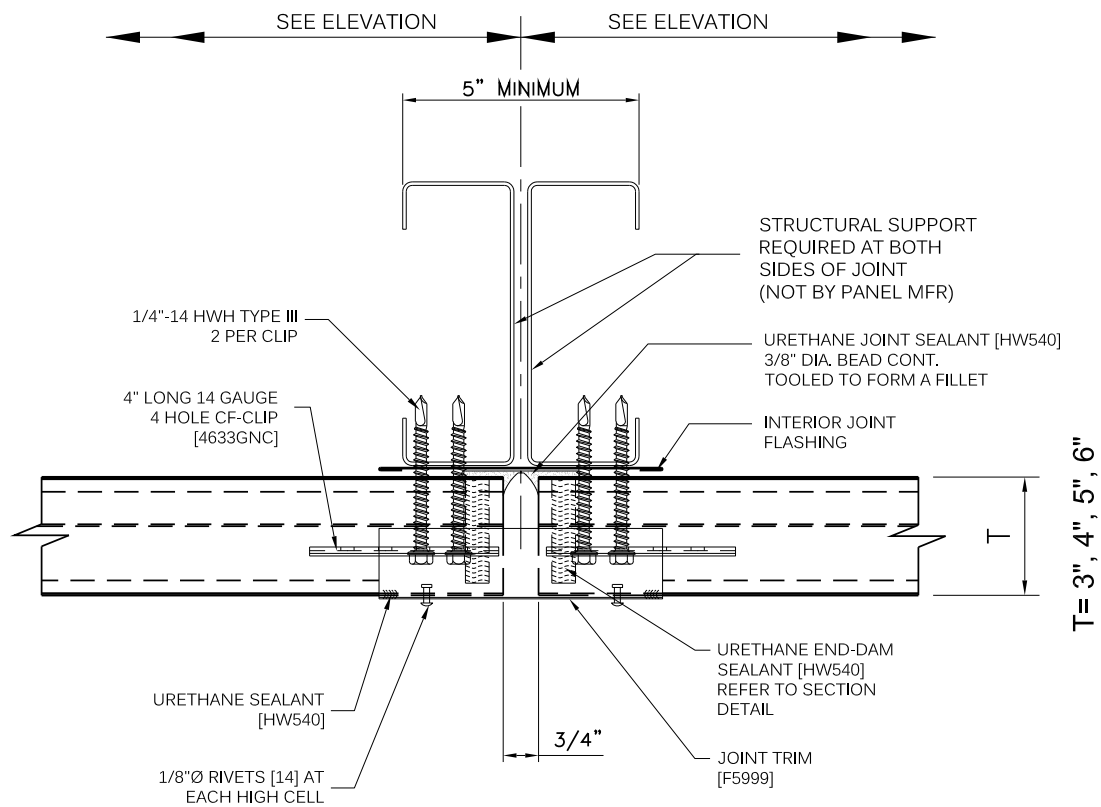
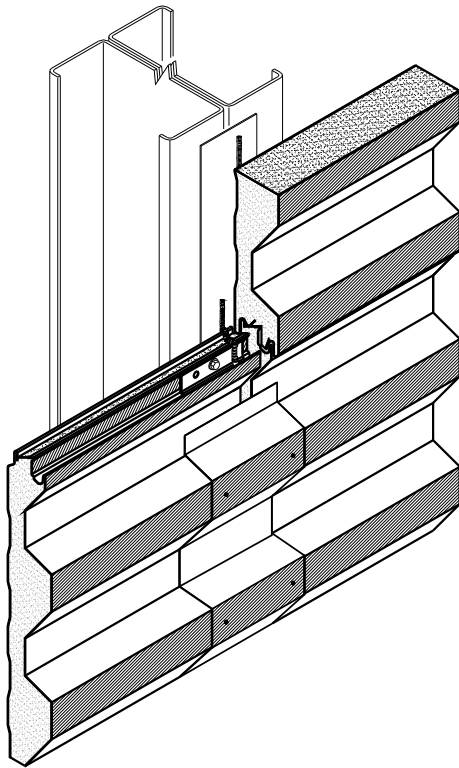
REFER TO SHEET "CS-INFO" FOR ADDITIONAL INFORMATION REGARDING  
THE APPLICATION OF SEALANTS, FASTENERS AND CLOSURE MATERIALS.

7.2 INSUL-RIB  
JOINT DETAIL

HORIZONTAL APPLICATION:  
COMMERCIAL & INDUSTRIAL

7.2H-VJ-01

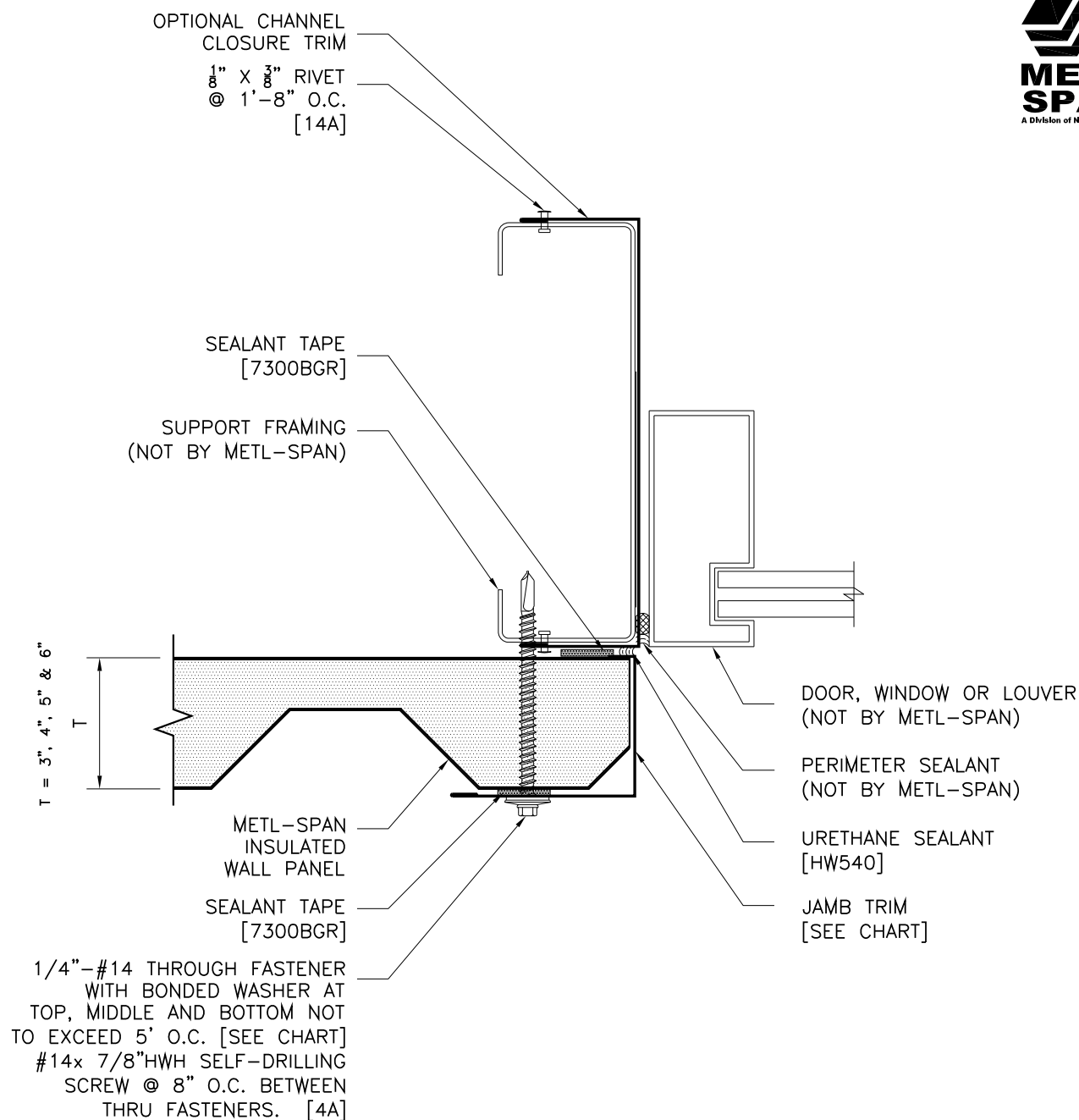
DATE: June 9, 2016



COMMERCIAL AND  
INDUSTRIAL

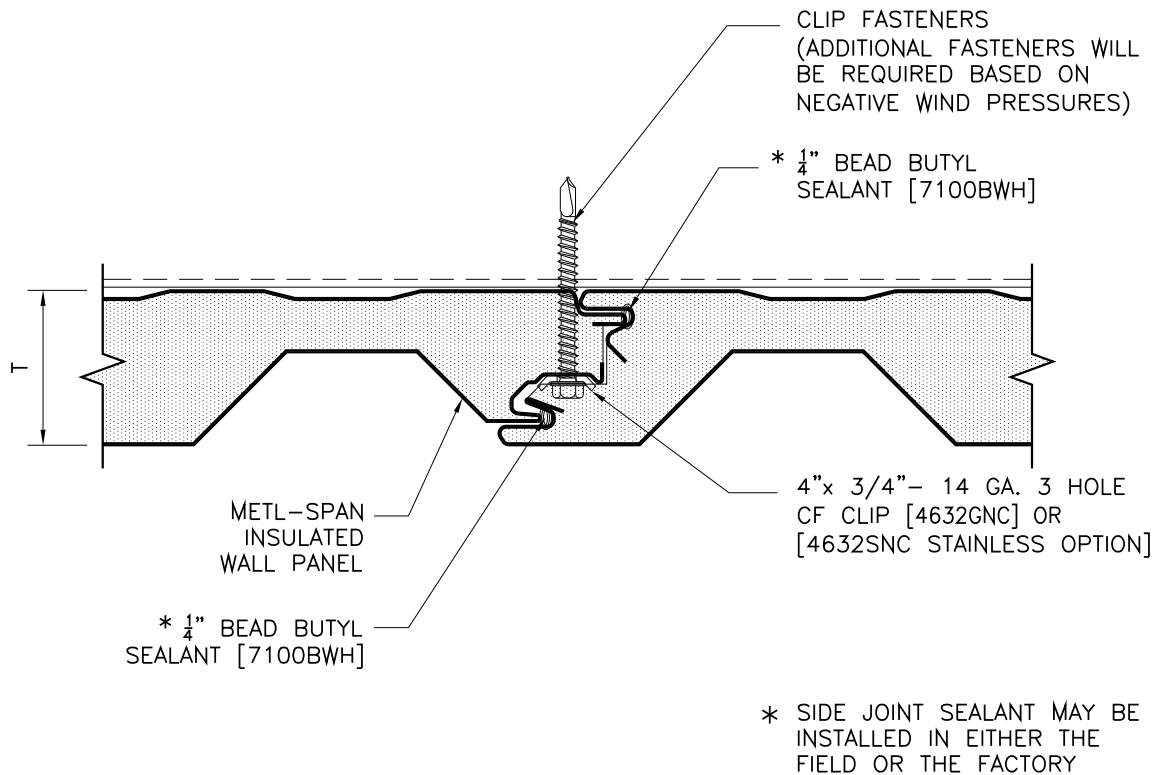
HORIZONTAL 7.2 INSUL-RIB  
VERTICAL JOINT DETAIL

7.2H-VJ-03  
DATE: June 9, 2016



REFER TO SHEET "CI-INFO" FOR ADDITIONAL INFORMATION REGARDING THE APPLICATION OF SEALANTS, FASTENERS, AND CLOSURE MATERIALS.  
CONSULT METL-SPAN TO DETERMINE ALLOWABLE LOAD AND SPACING OF ATTACHMENT FASTENERS.

T	JAMB TRIM	THRU-FASTENER TEK III	THRU-FASTENER TEK V	THRU-FASTENER TYPE B
3"	F5452	1132P	1240P	1332P
4"	F5454	1140P	1248P	1340P
5"	F5456	1148P	1256P	1348P
6"	F5458	1156P	1264P	1356P
7.2 INSUL-RIB JAMB DETAIL WITH TRIM		VERTICAL APPLICATION: COMMERCIAL & INDUSTRIAL		7.2-JD-01 DATE: June 6, 2016



T = 3", 4", 5", 6"

7.2 INSUL-RIB  
JOINT DETAIL

VERTICAL APPLICATION:  
COMMERCIAL & INDUSTRIAL

7.2-JT-01

DATE: June 6, 2016