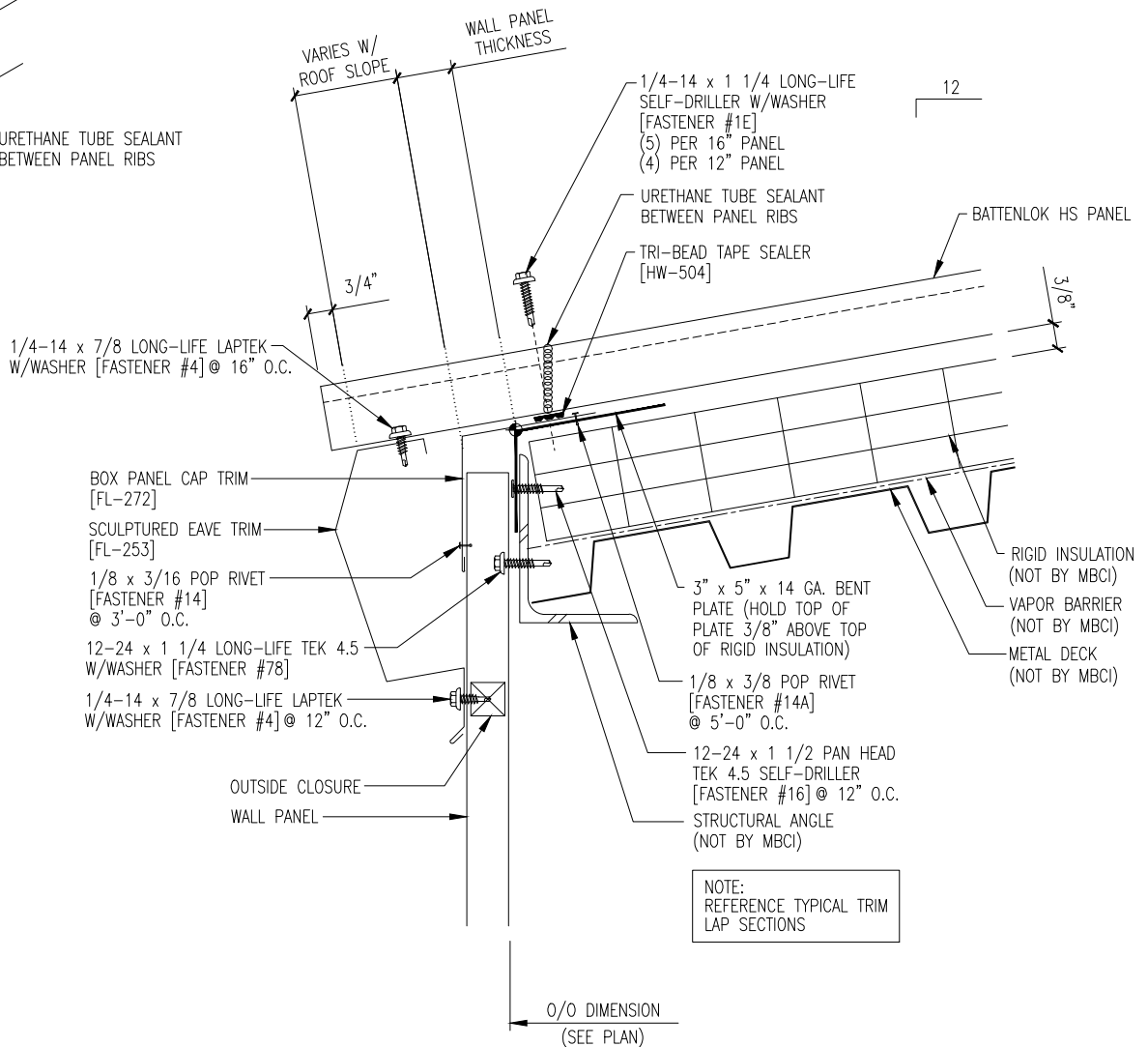
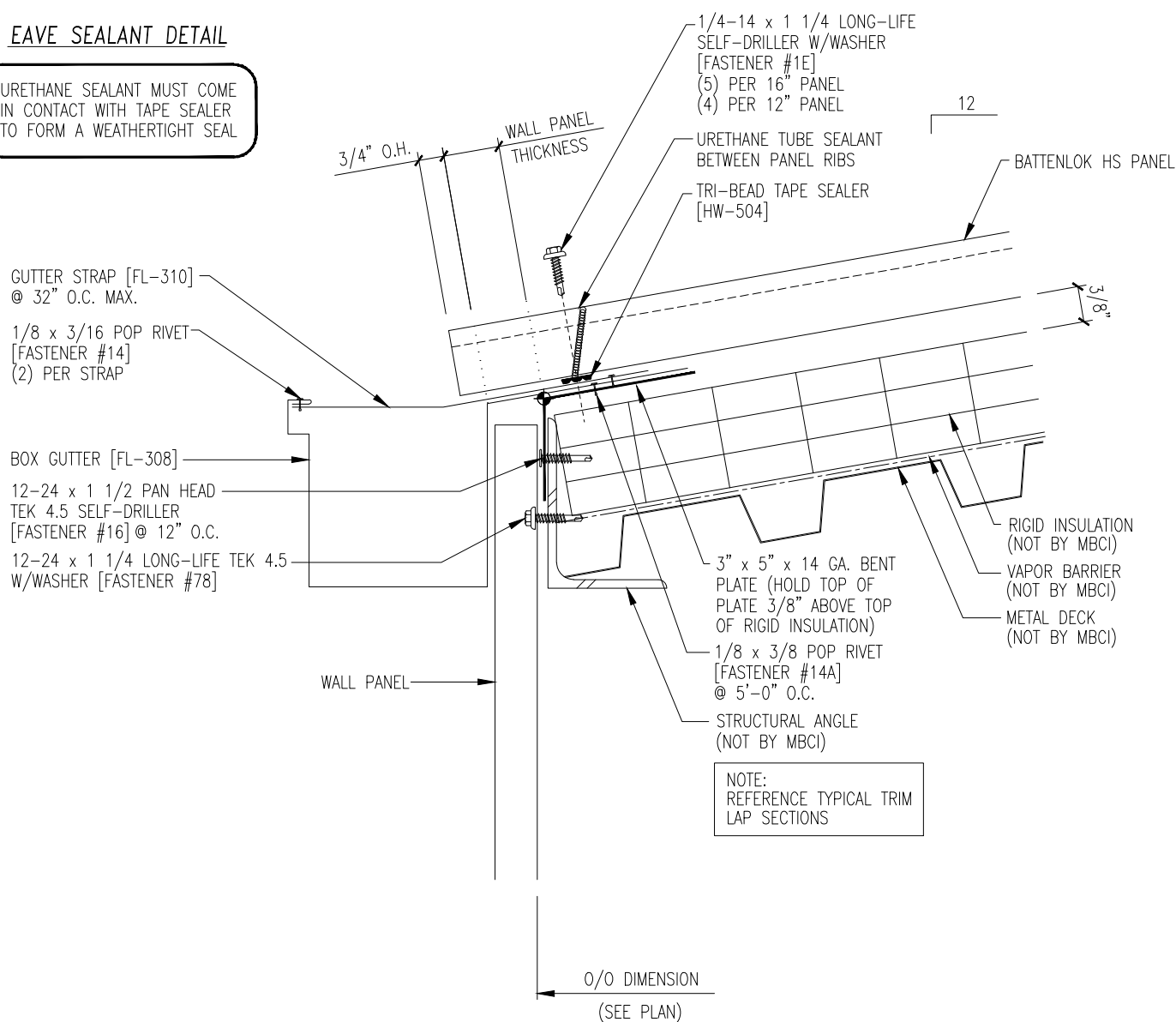
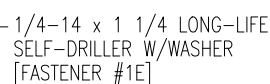
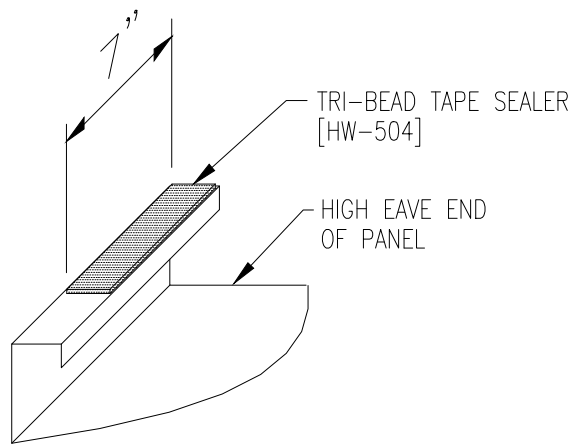


#### EAVE SEALANT DETAIL

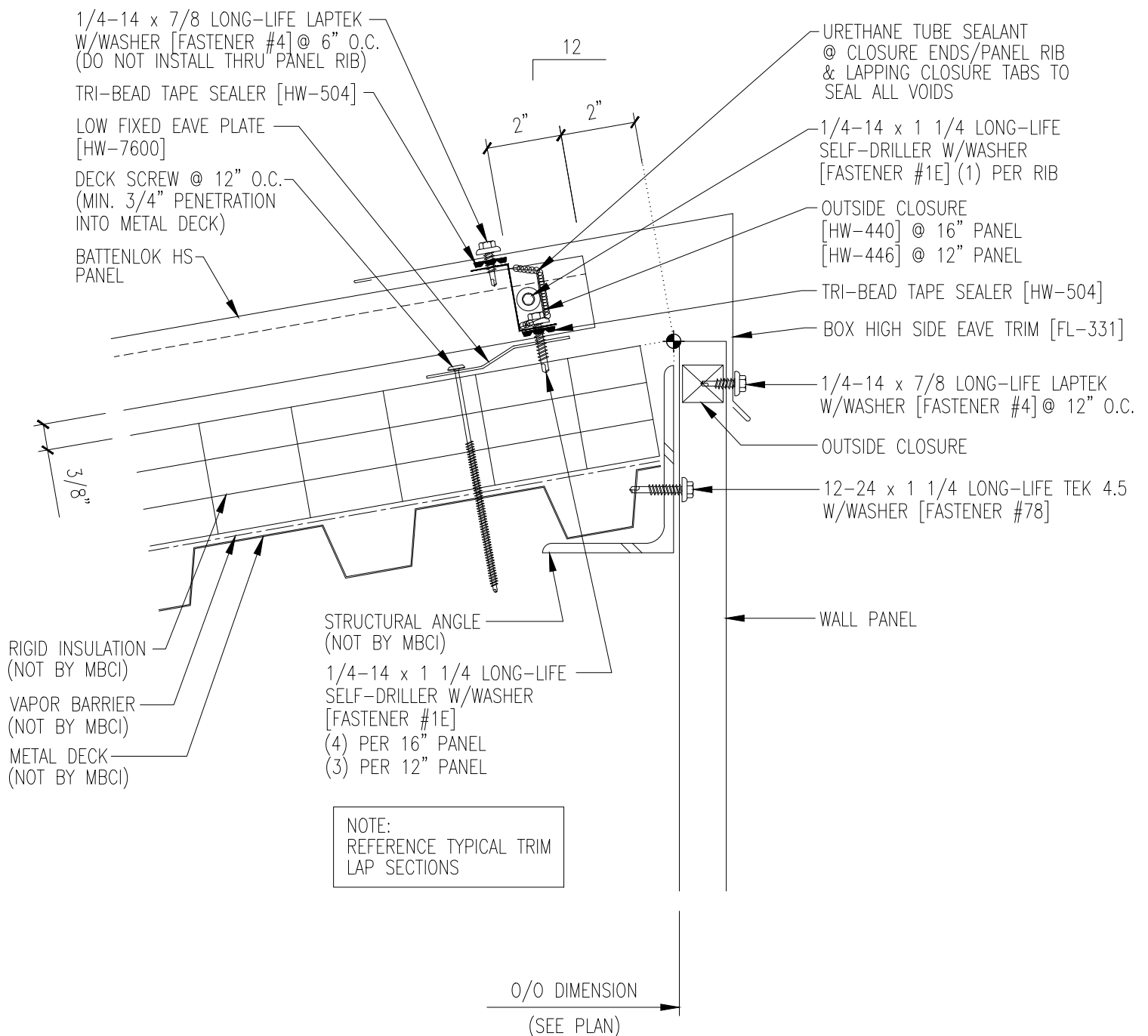
URETHANE SEALANT MUST COME IN CONTACT WITH TAPE SEALER TO FORM A WEATHERTIGHT SEAL

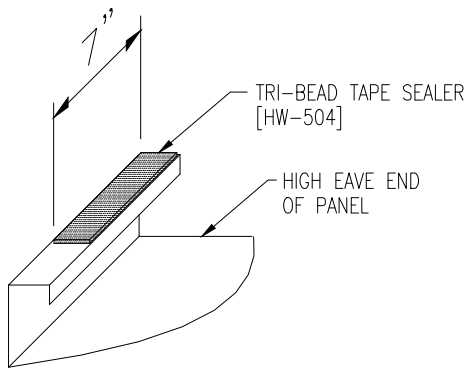




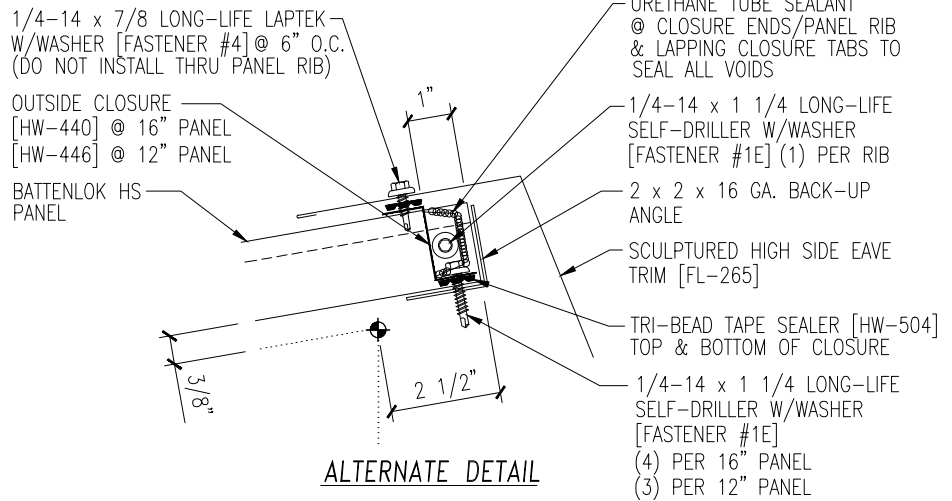


### HIGH EAVE SEALANT DETAIL

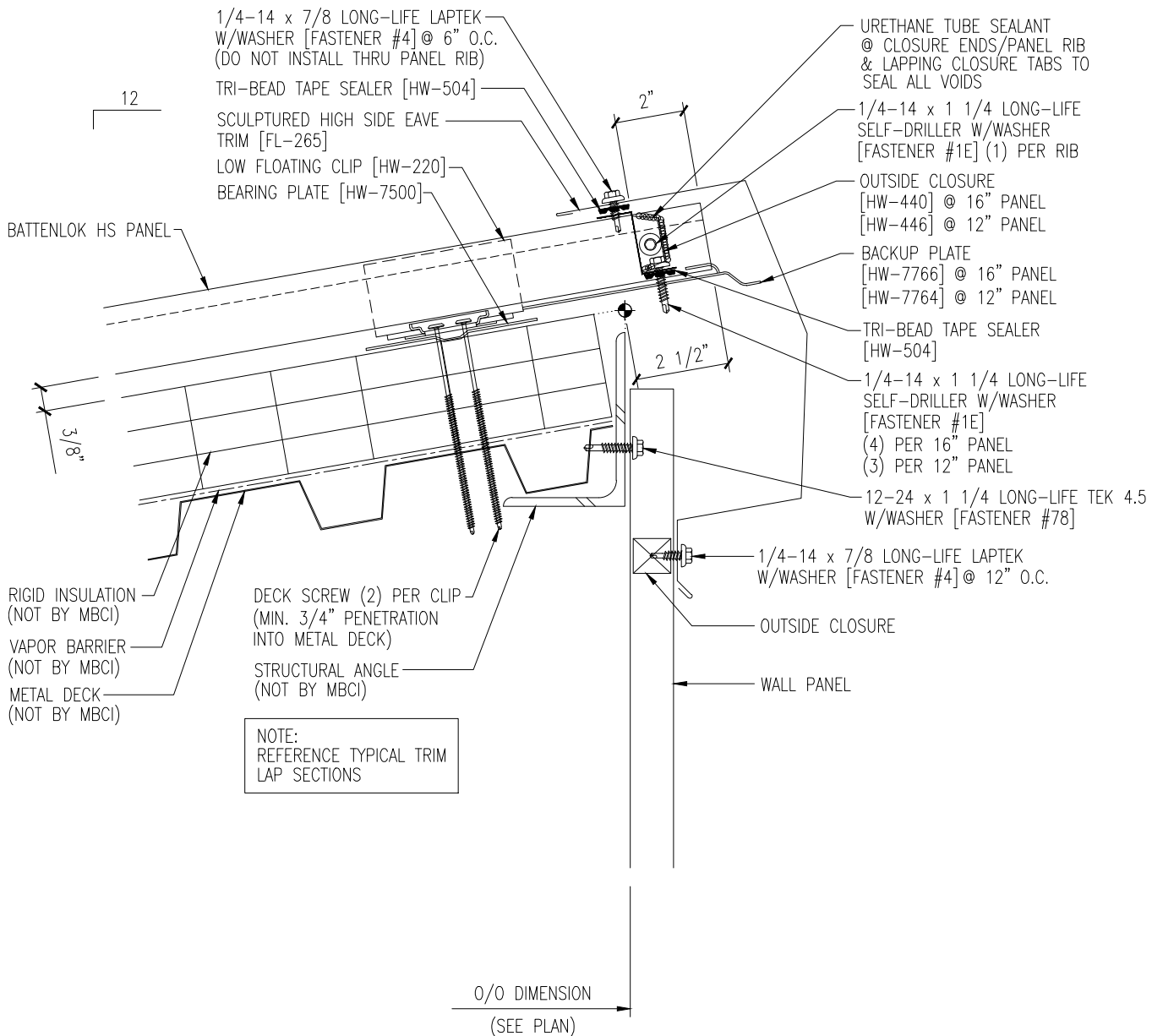


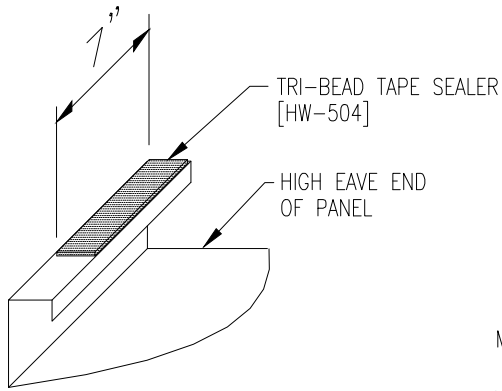


HIGH EAVE SEALANT DETAIL

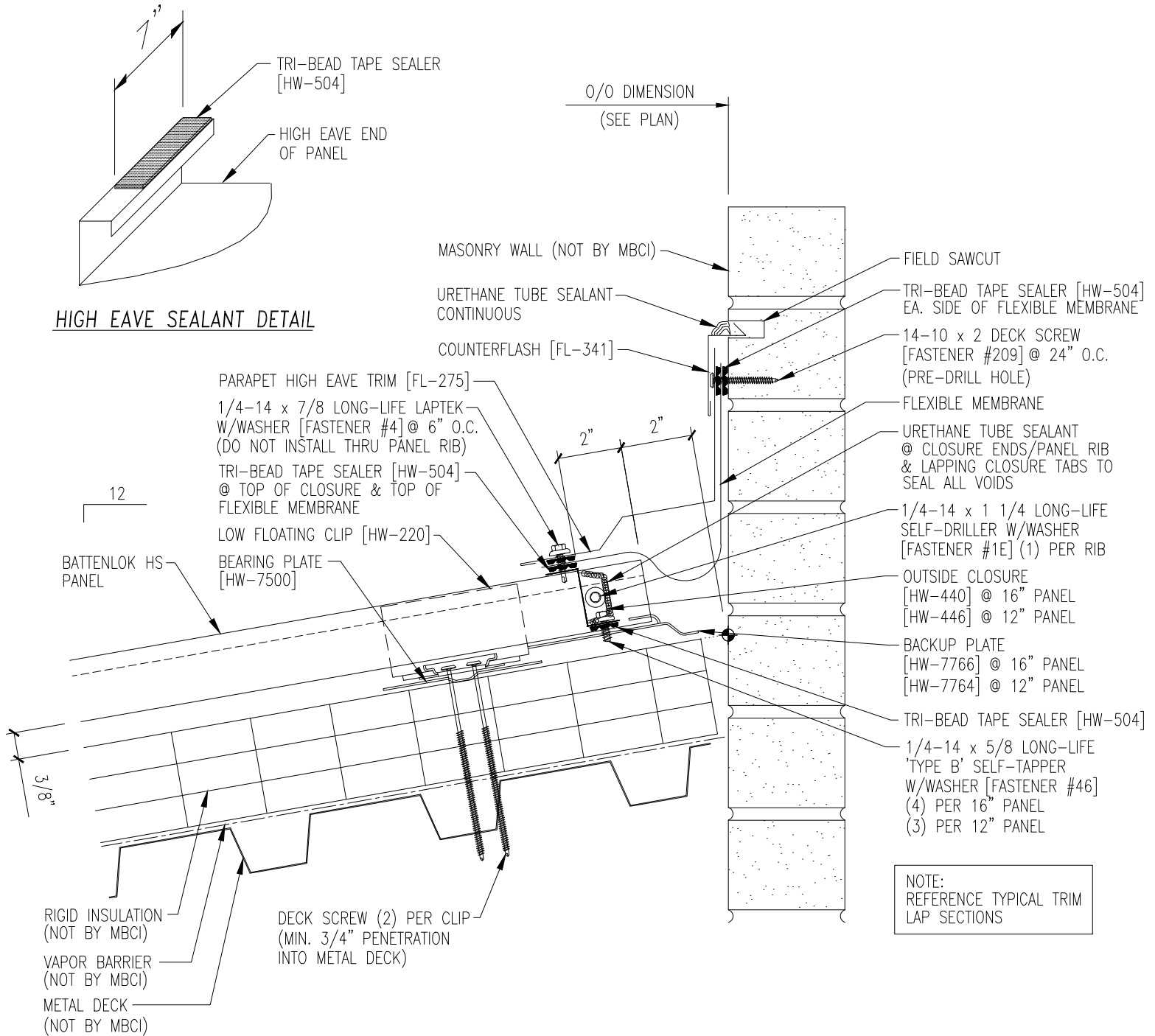


ALTERNATE DETAIL

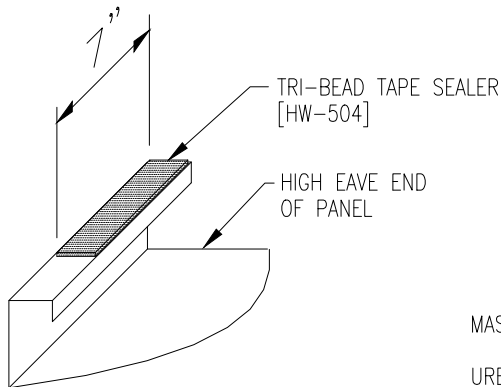




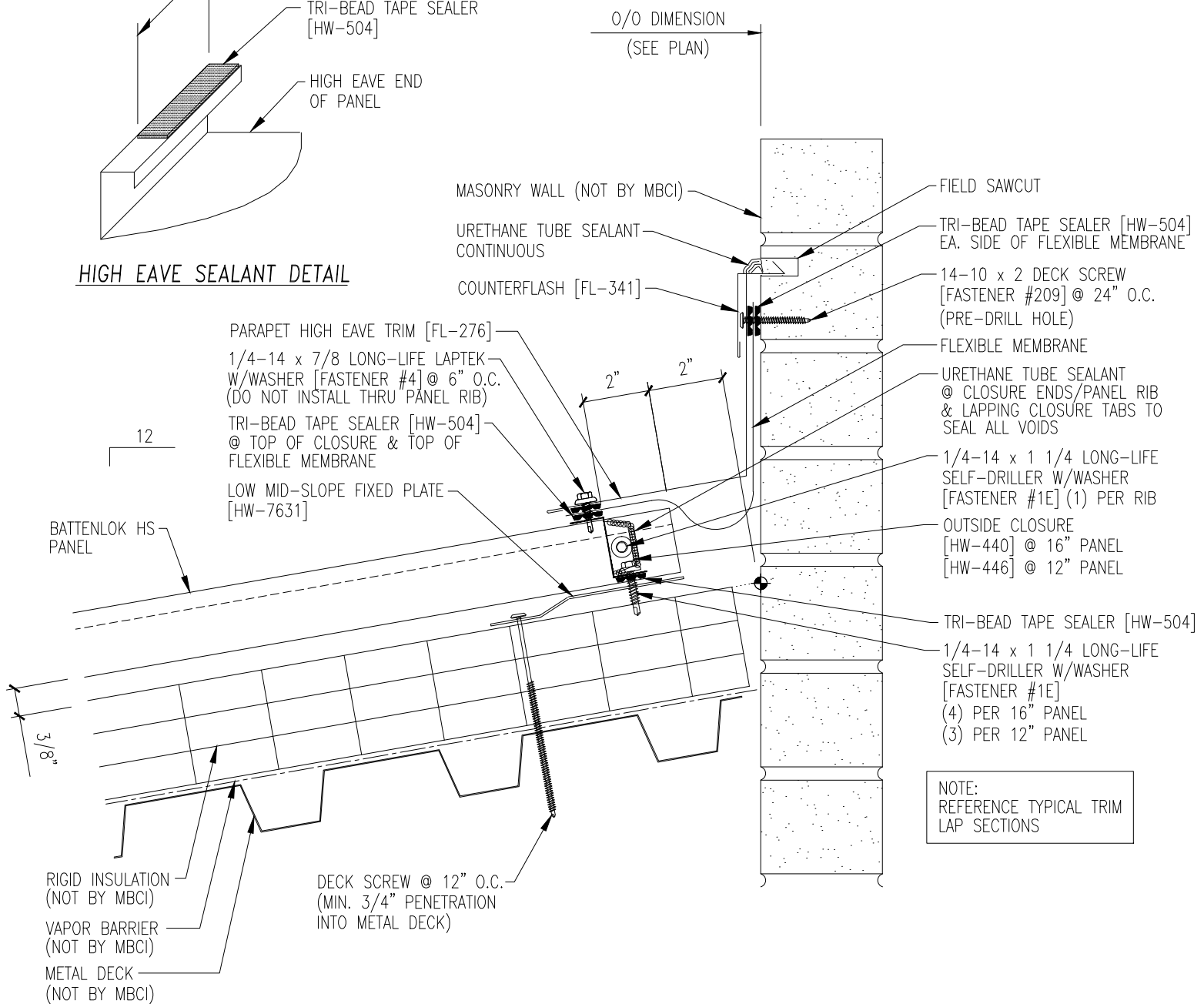
### HIGH EAVE SEALANT DETAIL



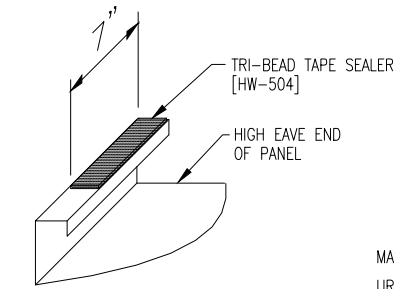
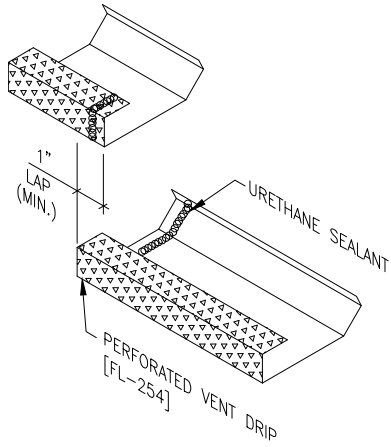
NOTE:  
REFERENCE TYPICAL TRIM  
LAP SECTIONS



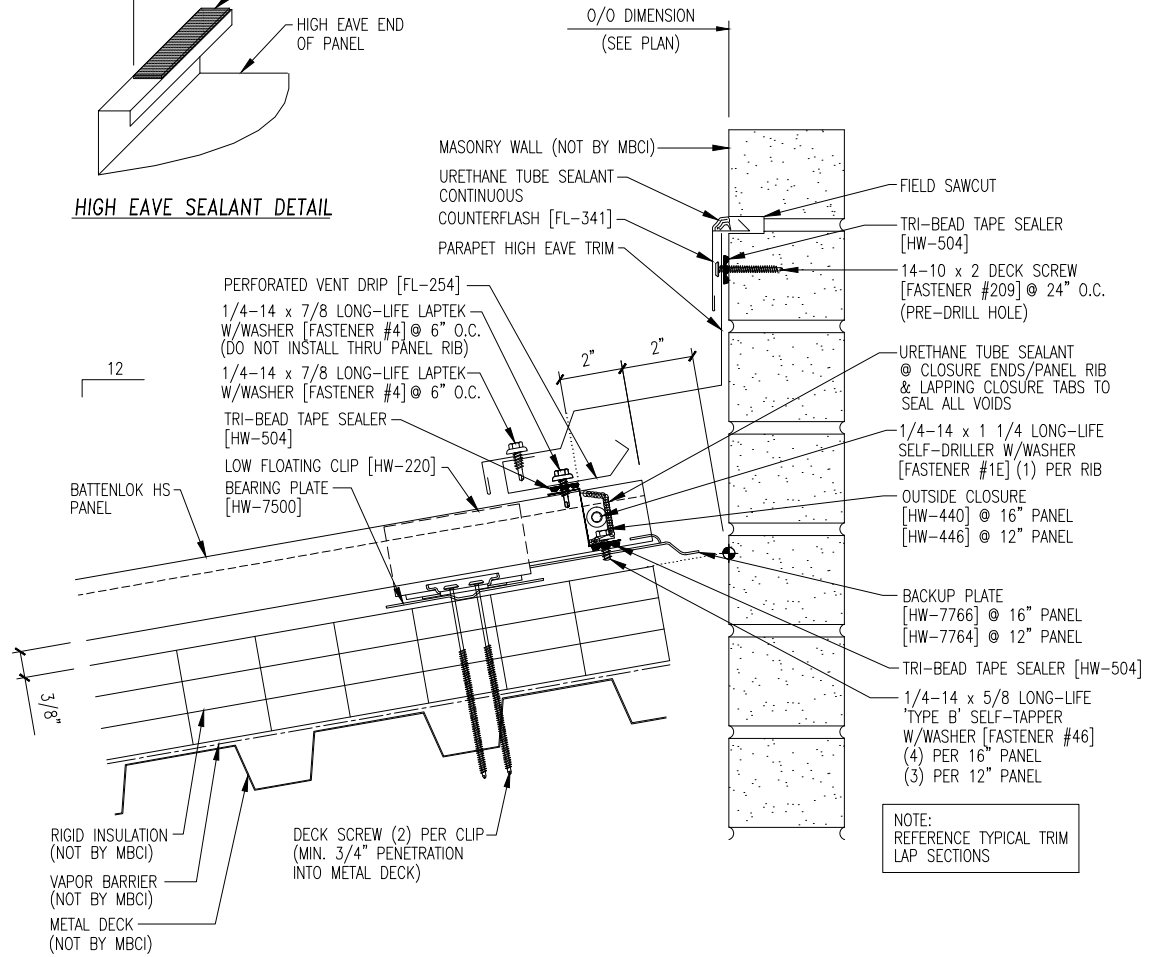
### HIGH EAVE SEALANT DETAIL

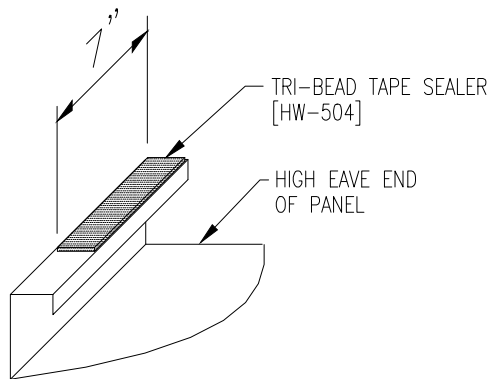




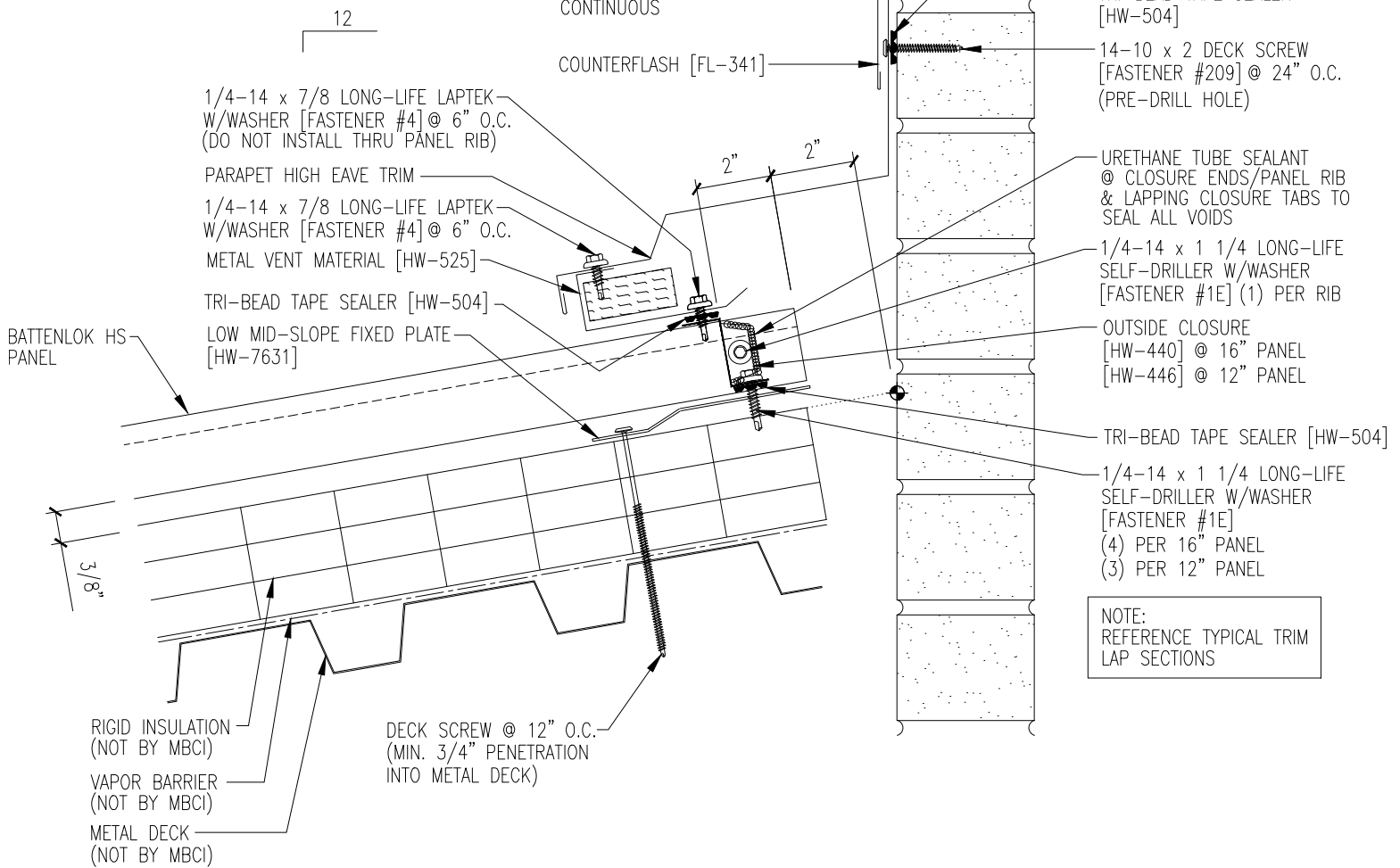


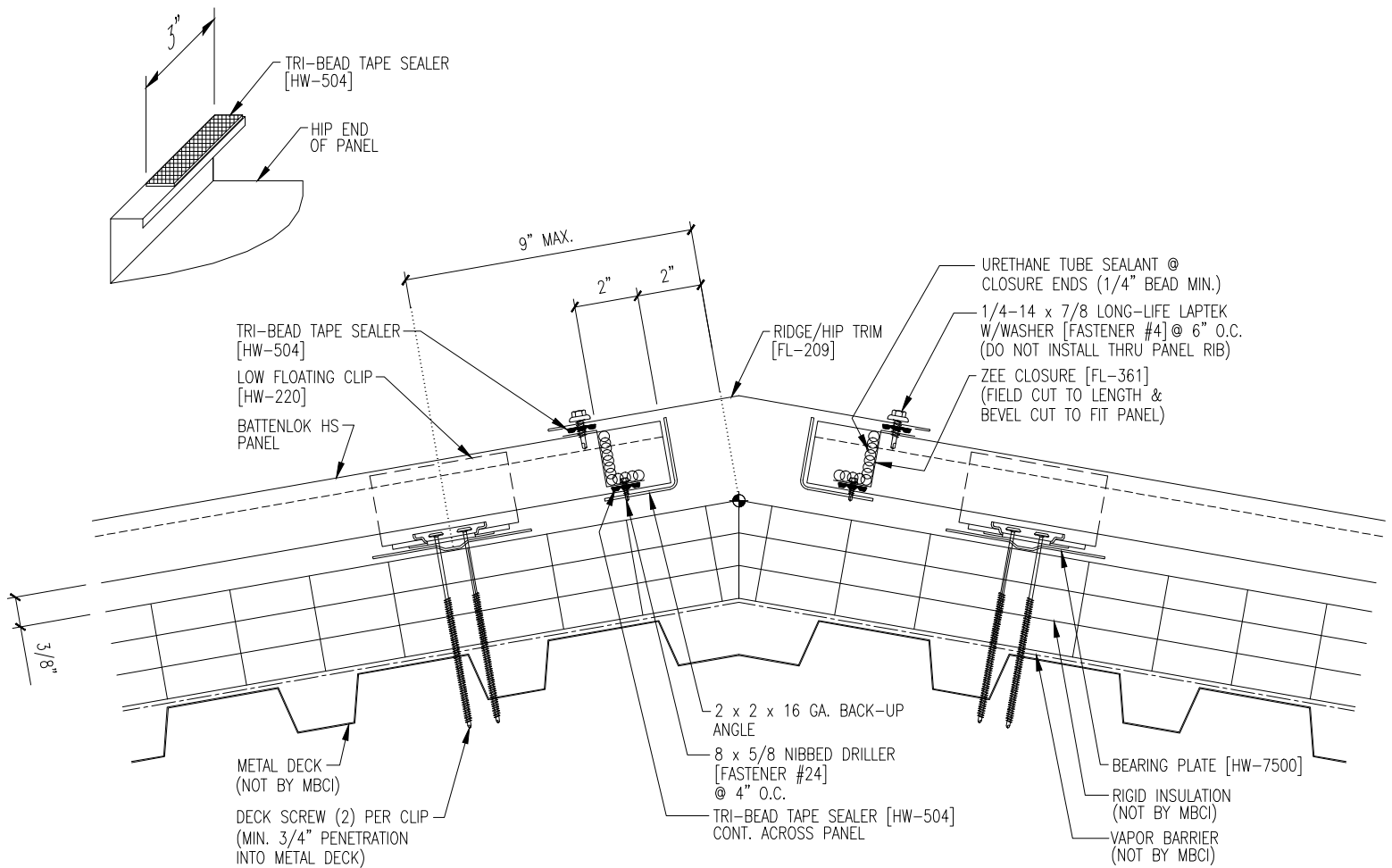
### HIGH EAVE SEALANT DETAIL

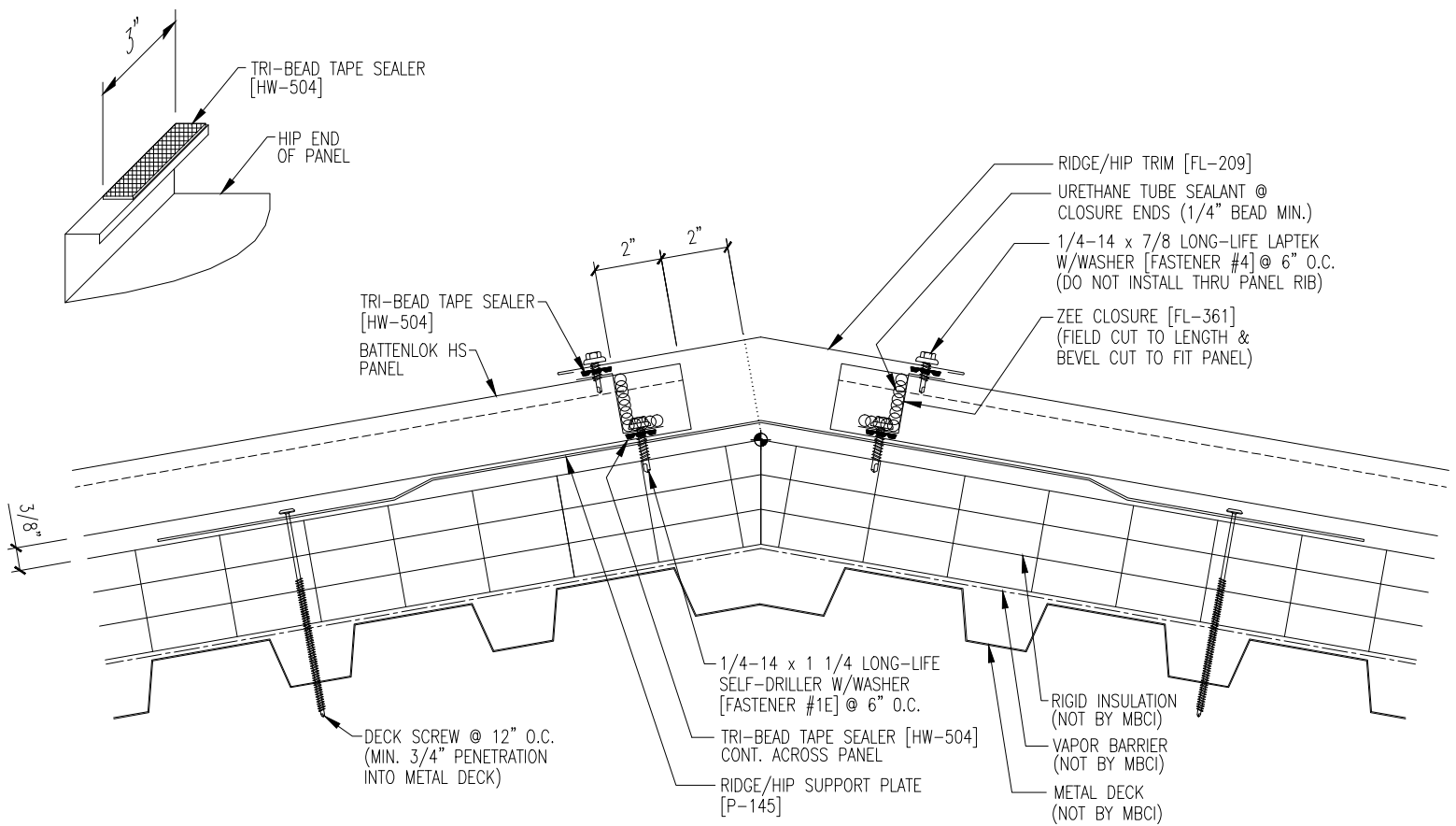


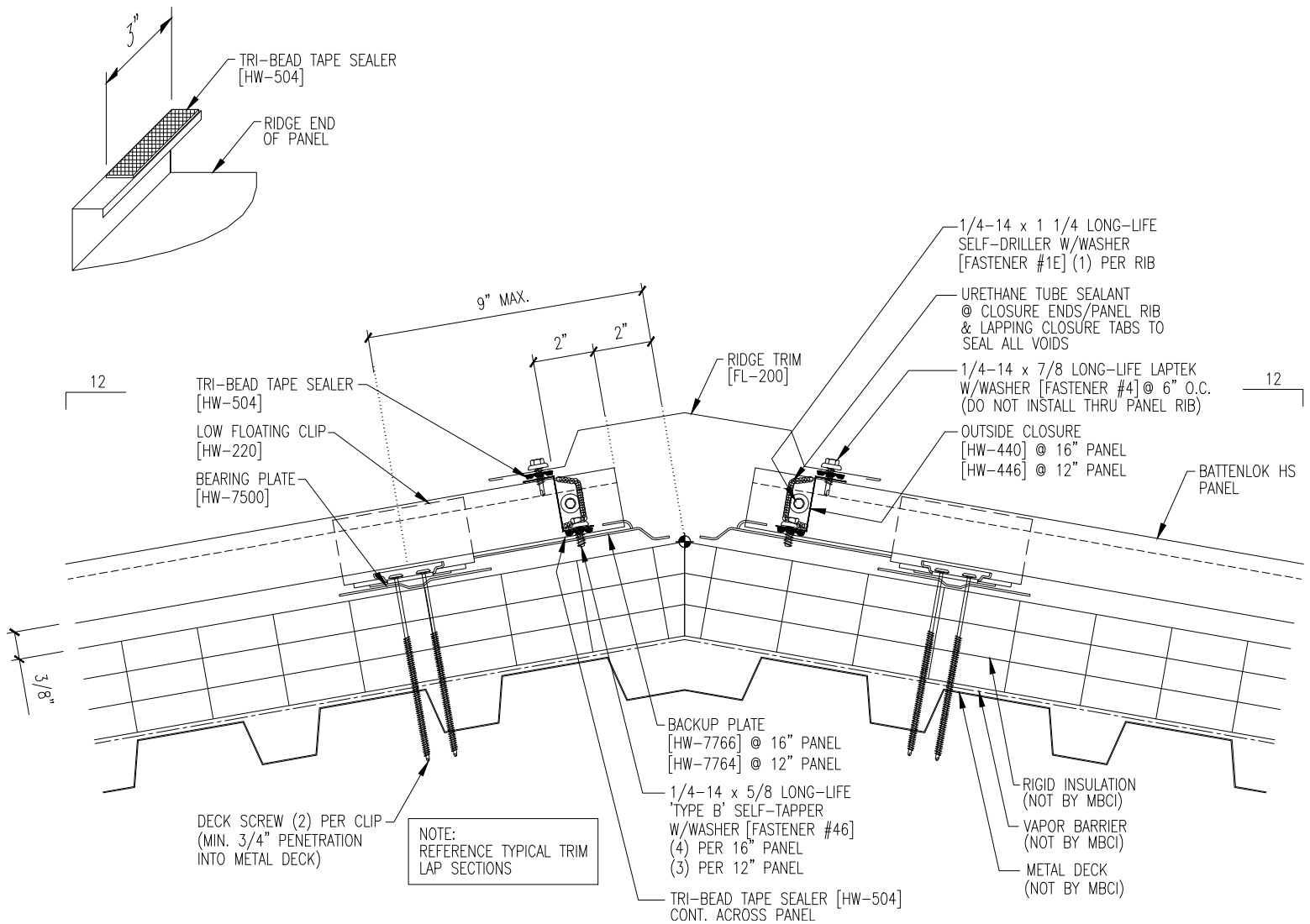


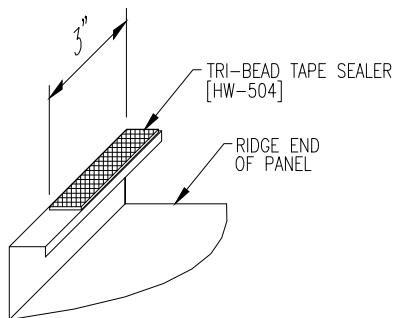
### HIGH EAVE SEALANT DETAIL











1/4-14 x 7/8 LONG-LIFE LAPTEK W/WASHER [FASTENER #4] @ 6" O.C. (DO NOT INSTALL THRU PANEL RIB)

TRI-BEAD TAPE SEALER [HW-504]

BATTENLOK HS PANEL

RIDGE/HIP SUPPORT PLATE [P-145]

2" 2"

RIDGE TRIM [FL-209]

1/4-14 x 1 1/4 LONG-LIFE SELF-DRILLER W/WASHER [FASTENER #1E] (1) PER RIB

URETHANE TUBE SEALANT @ CLOSURE ENDS/PANEL RIB & LAPPING CLOSURE TABS TO SEAL ALL VOIDS

OUTSIDE CLOSURE [HW-440] @ 16" PANEL [HW-446] @ 12" PANEL

12

12

3/8"

DECK SCREW @ 12" O.C. (MIN. 3/4" PENETRATION INTO METAL DECK)

NOTE: REFERENCE TYPICAL TRIM LAP SECTIONS

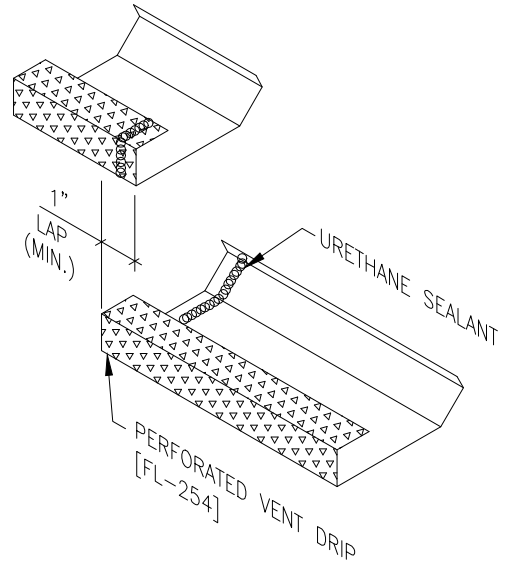
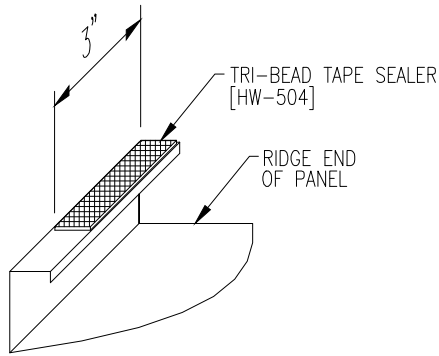
1/4-14 x 1 1/4 LONG-LIFE SELF-DRILLER W/WASHER [FASTENER #1E] (4) PER 16" PANEL (3) PER 12" PANEL

TRI-BEAD TAPE SEALER [HW-504] CONT. ACROSS PANEL

RIGID INSULATION (NOT BY MBCI)

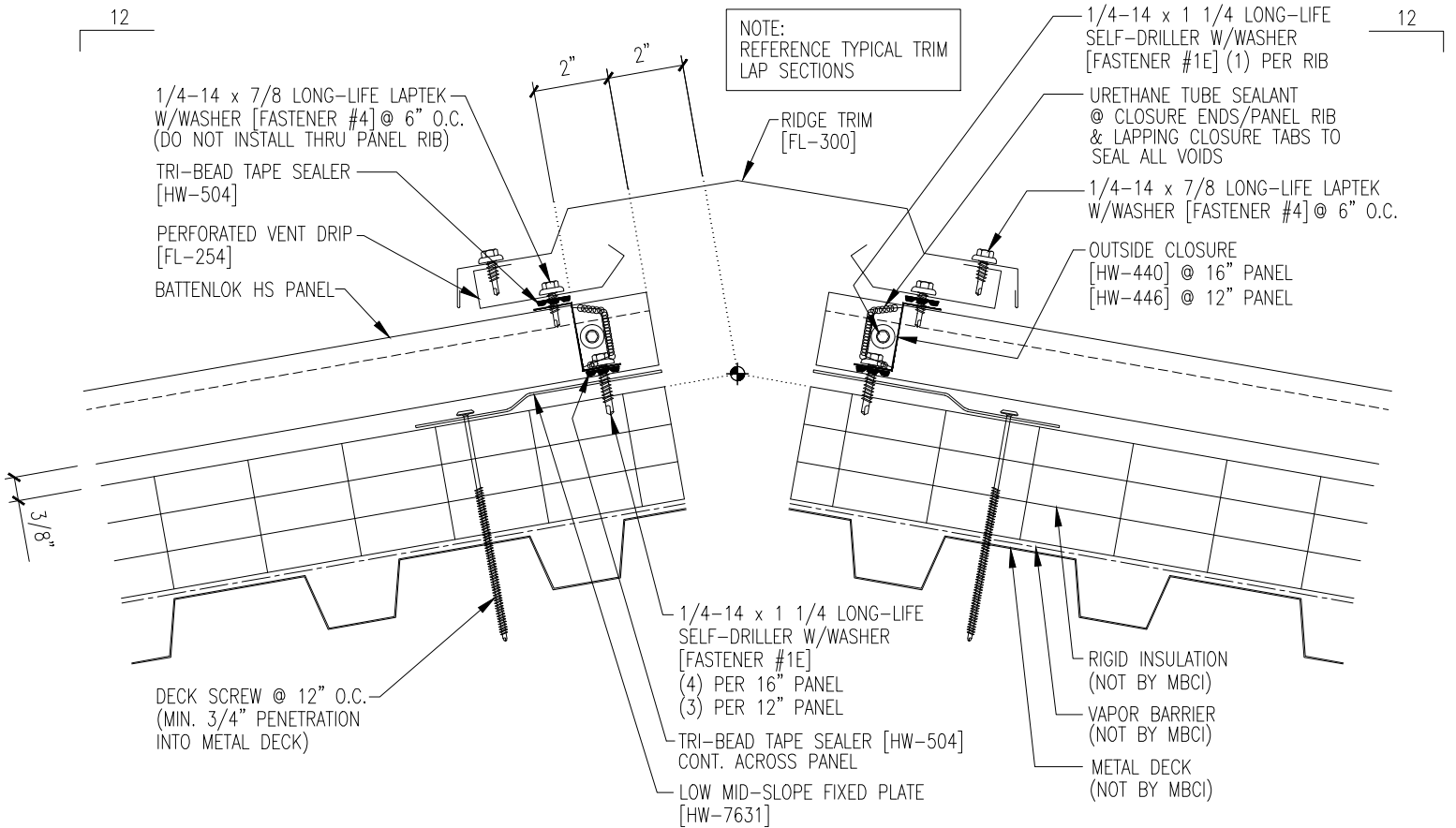
VAPOR BARRIER (NOT BY MBCI)

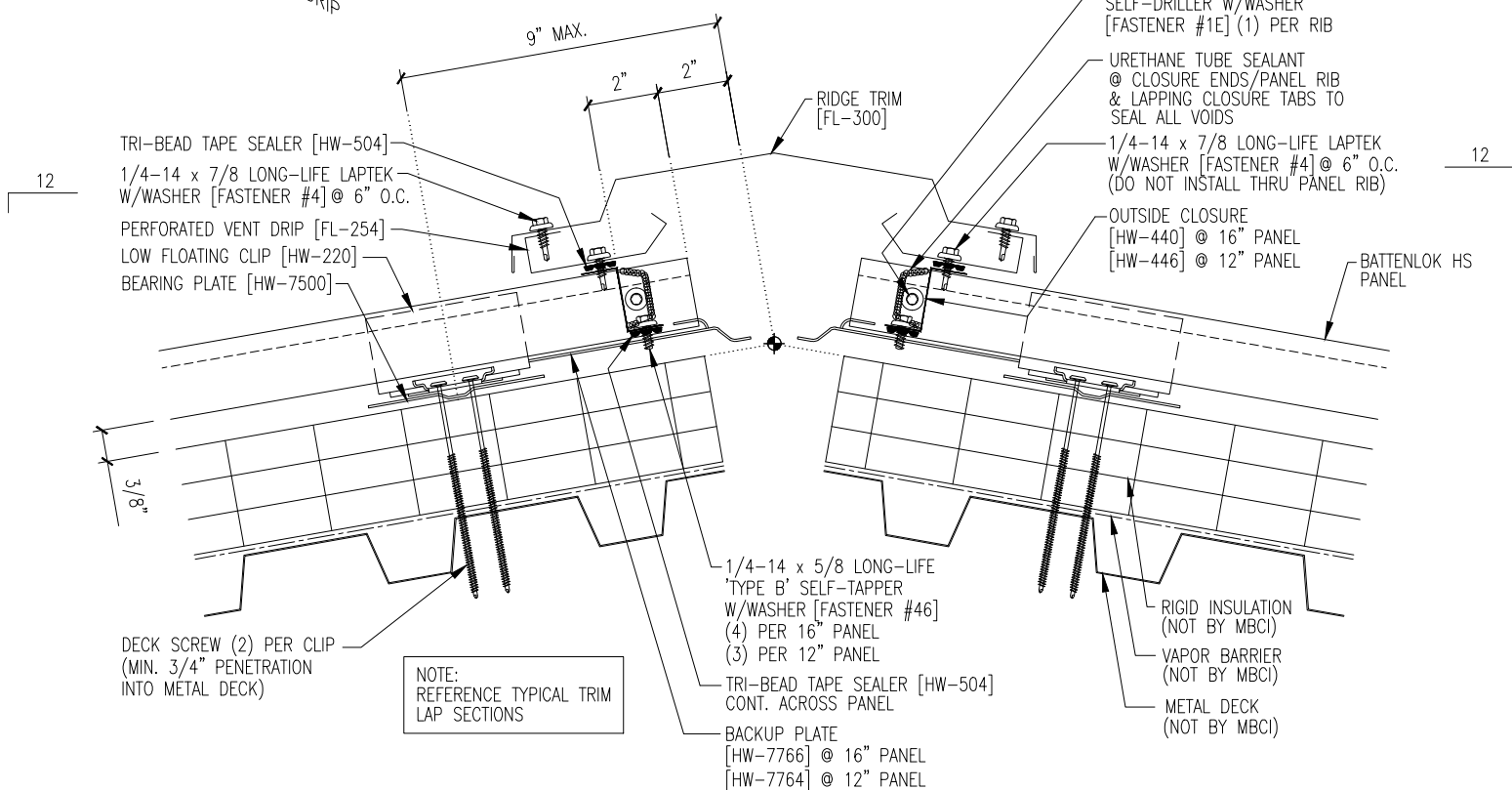
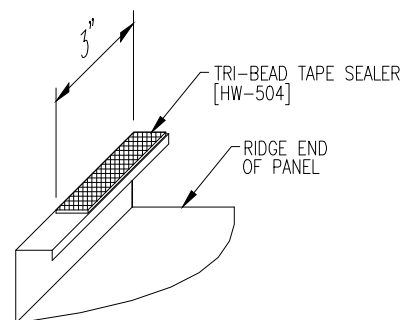
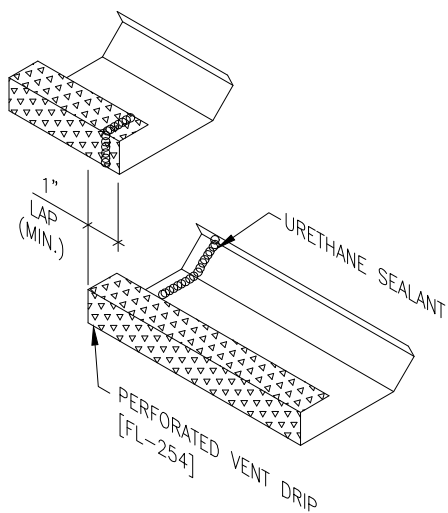
METAL DECK (NOT BY MBCI)



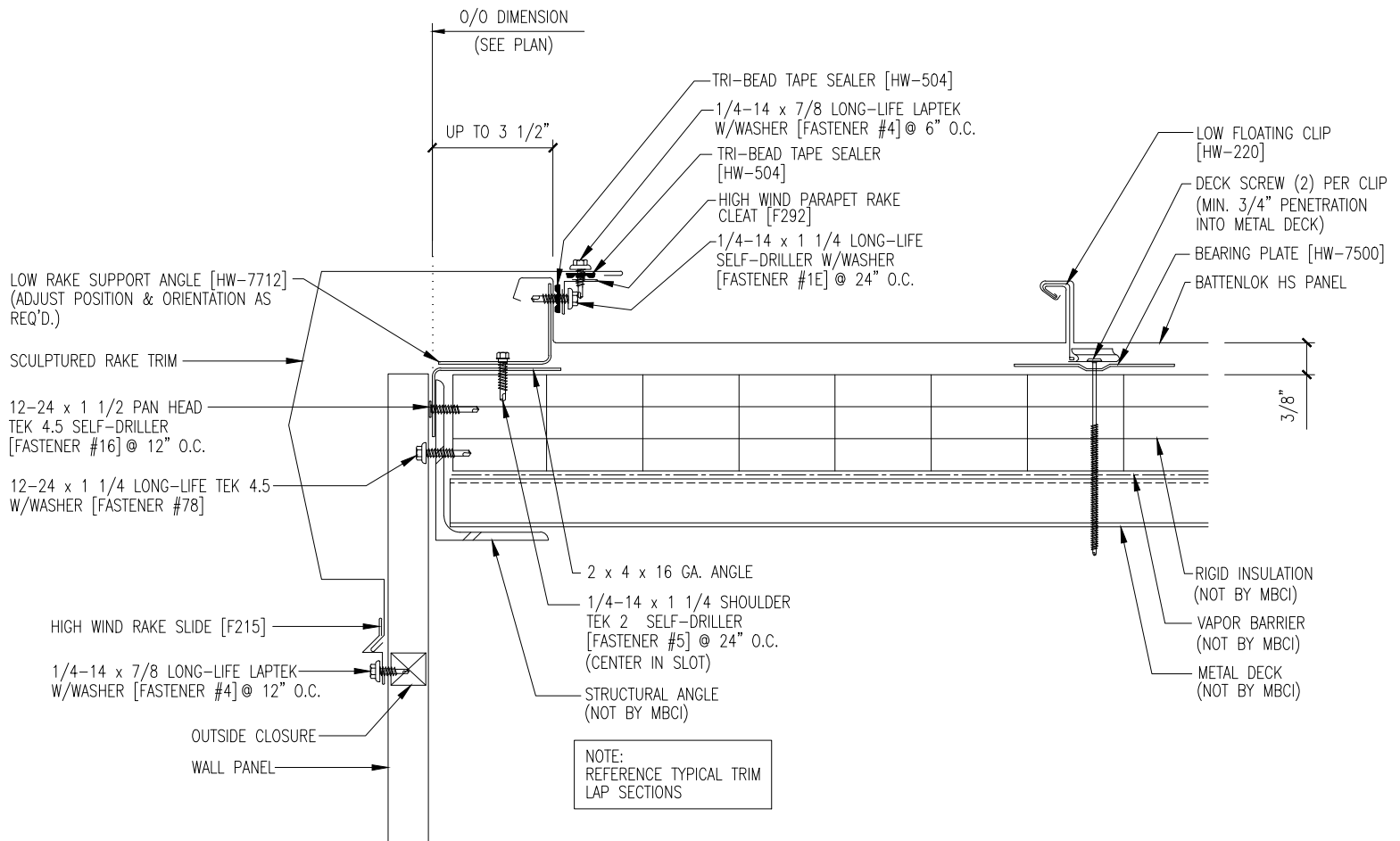
12

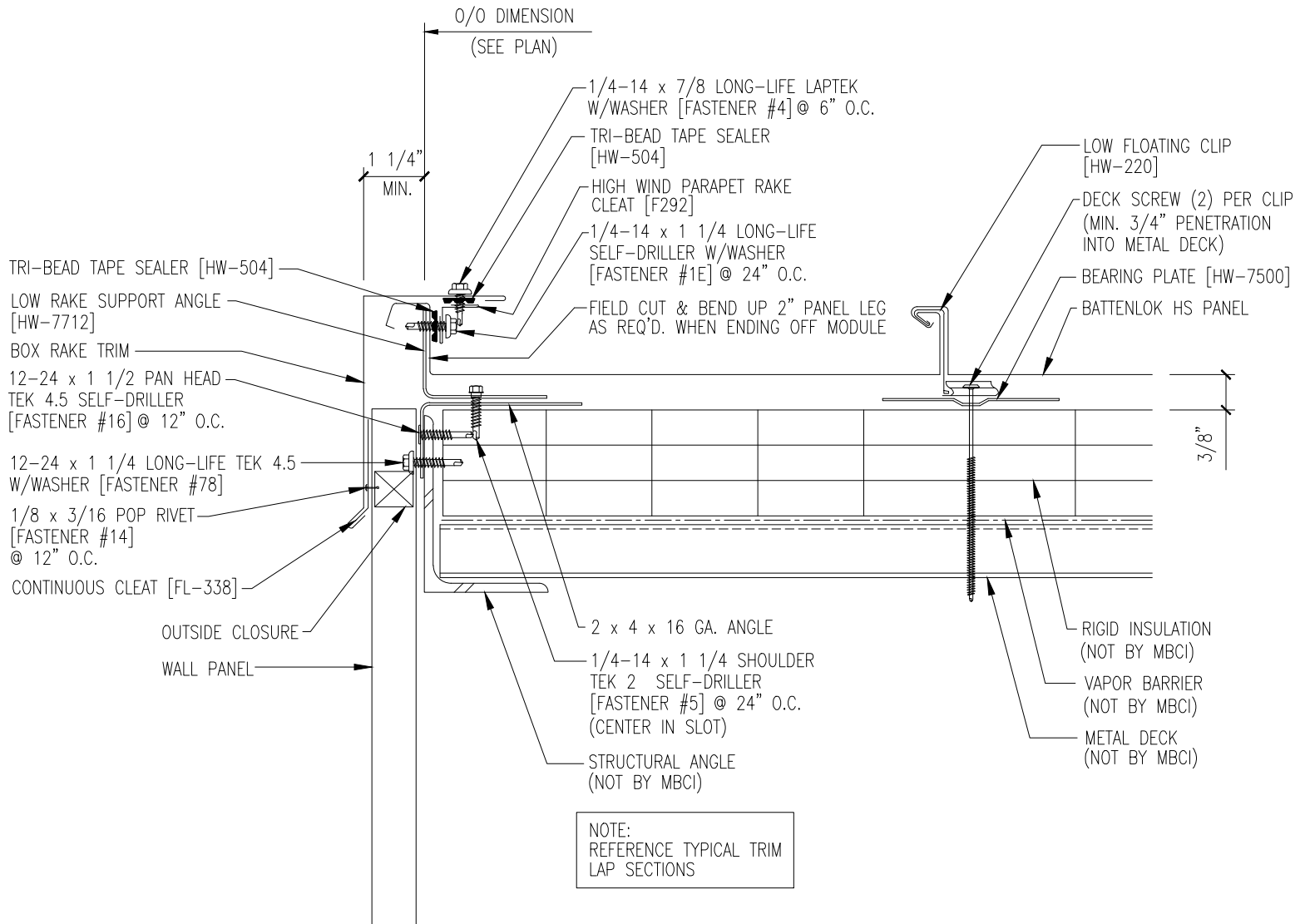
12

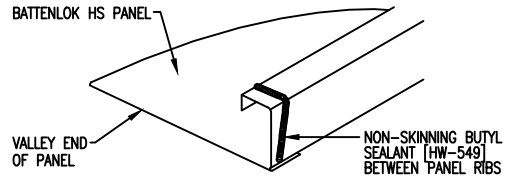
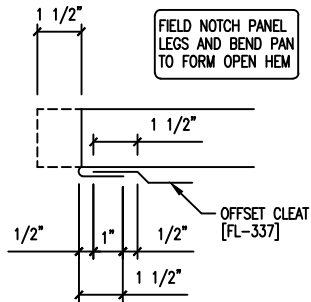




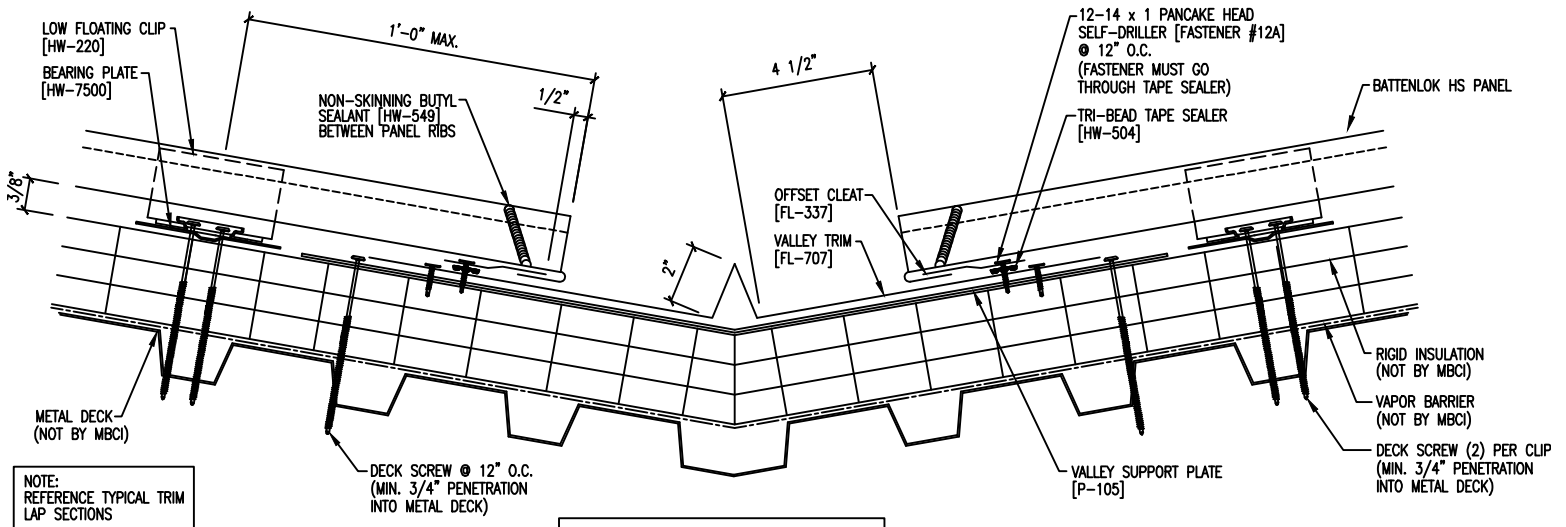


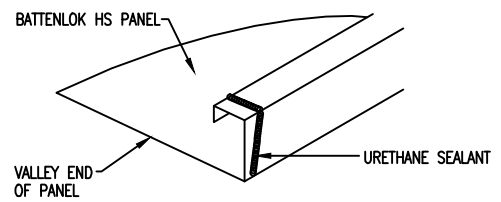
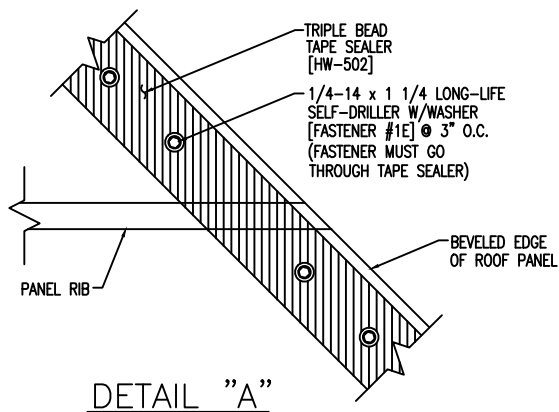






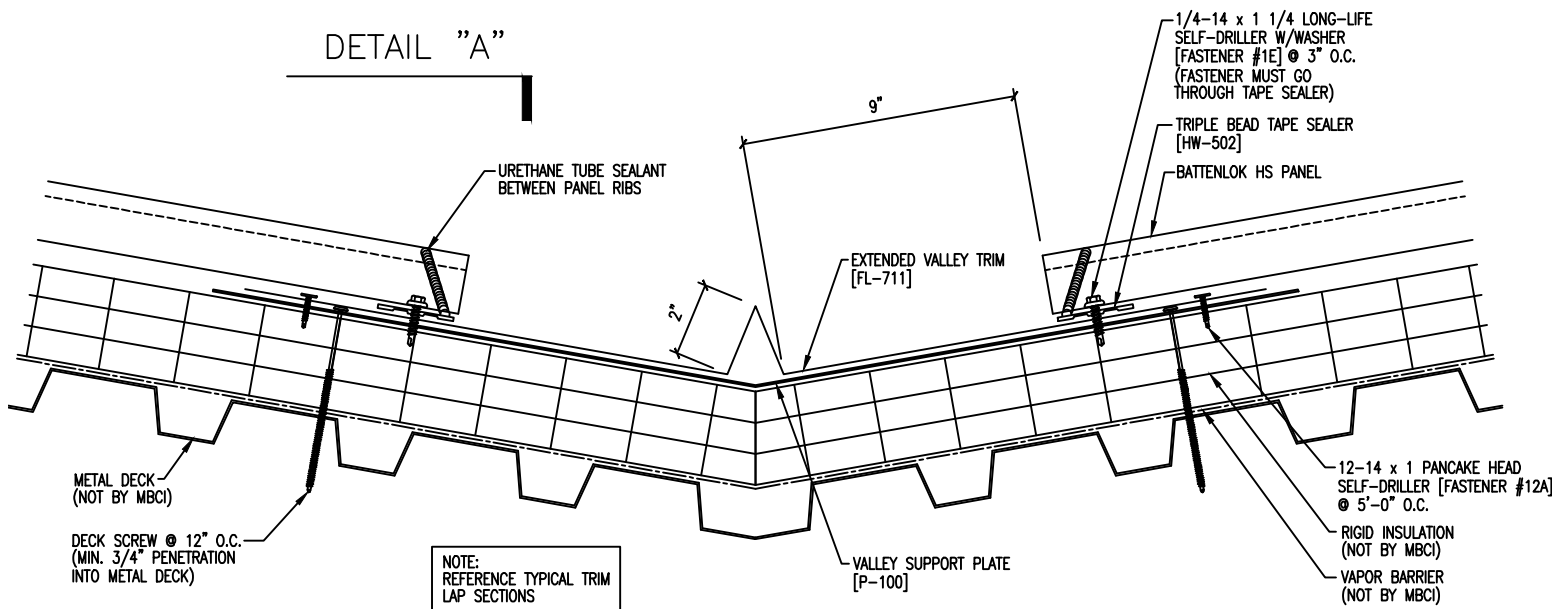
BUTYL SEALANT MUST COME IN CONTACT WITH THE OFFSET CLEAT TO FORM A WEATHERTIGHT SEAL





URETHANE SEALANT MUST COME IN CONTACT WITH TAPE SEALER TO FORM A WEATHERTIGHT SEAL

DETAIL "A"

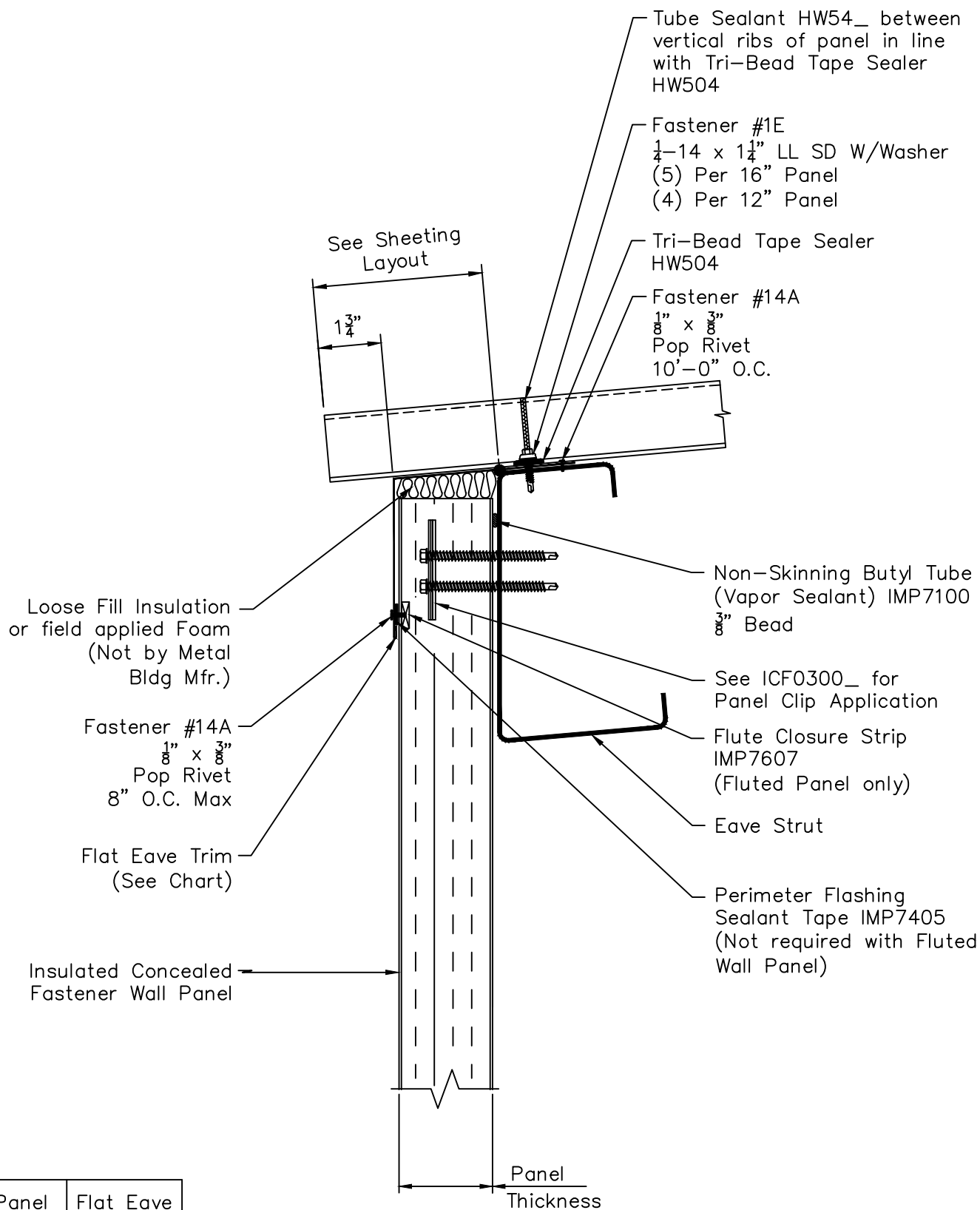


# BattenLok HS / SuperLok Roof - Insulated Concealed Fastener Wall

## Flat Eave Trim - Fixed without Eave Plate

Page **BLI04010**

Date **Apr '16** Rev. **02**



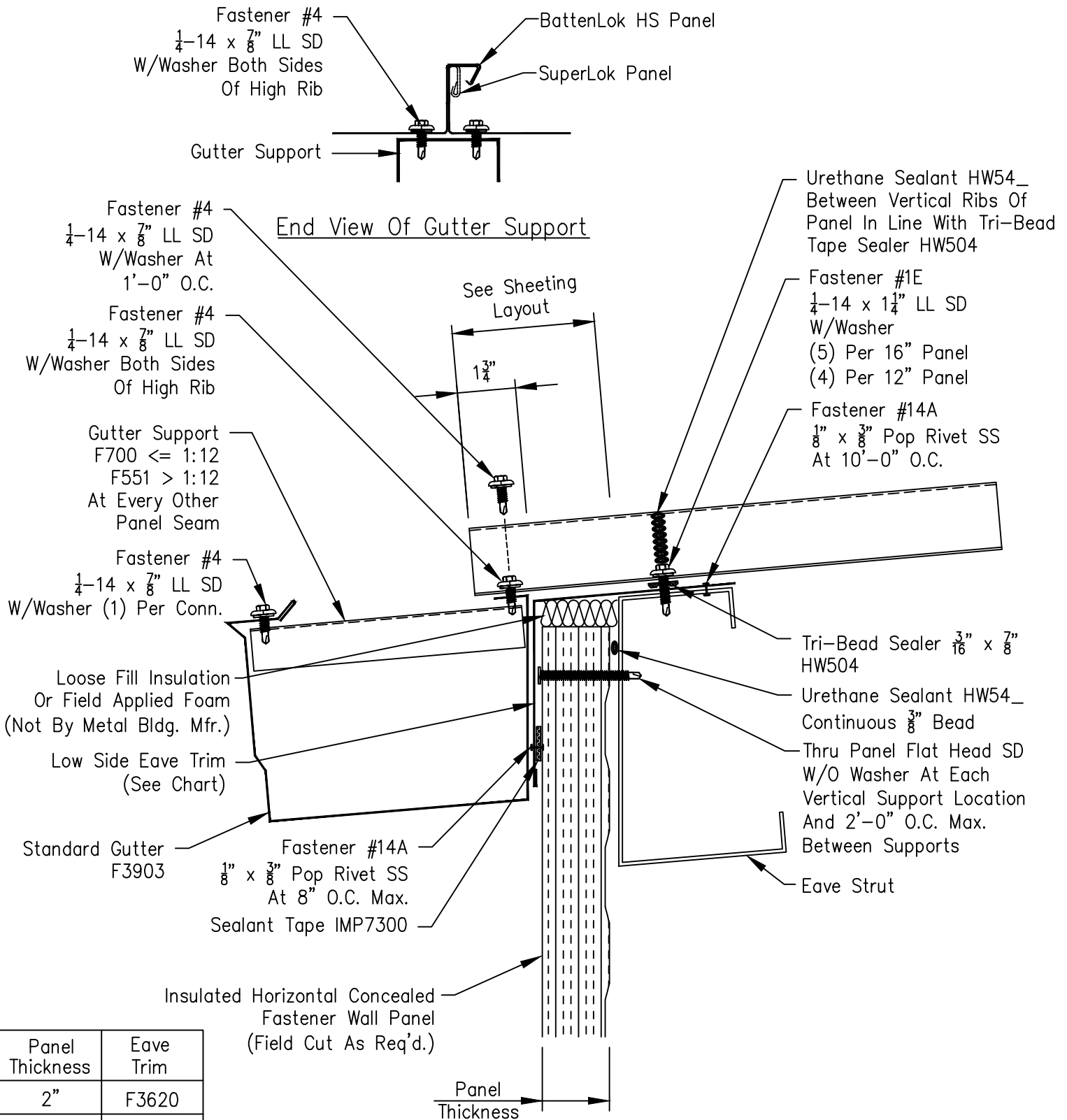
Wall Panel Thickness	Flat Eave Trim
2" - 2 1/2"	F3620
3" - 4"	F3622
5" - 6"	F3624

# BattenLok HS / SuperLok Roof - Horizontal Insulated Concealed Fastener Wall Standard Gutter - Fixed Without Eave Plate

Page  
BLI02210

Date  
May '16

Rev  
03

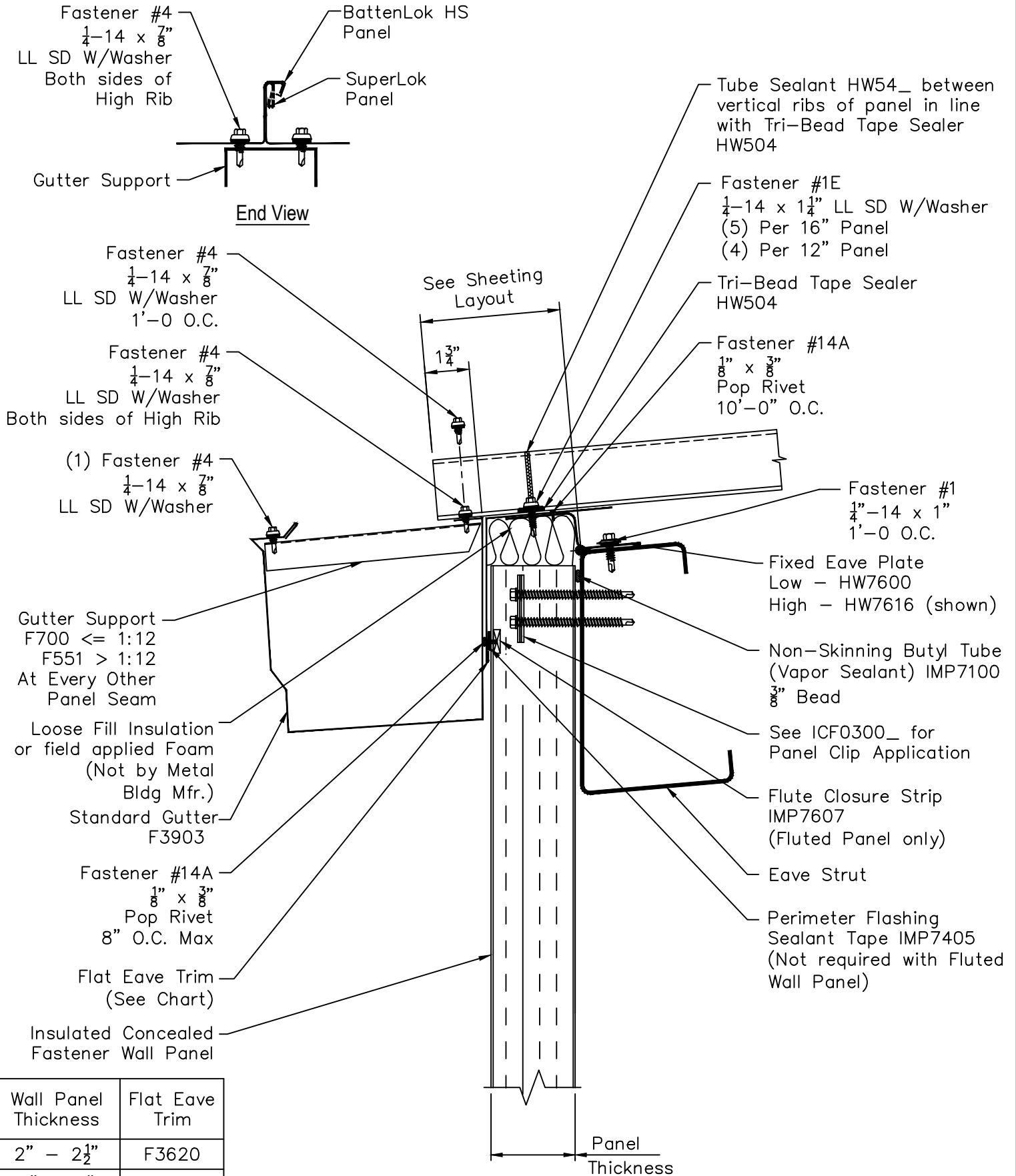


Panel Thickness	Eave Trim
2"	F3620
2 1/2"	F3620
3"	F3622
4"	F3622
5"	F3624
6"	F3624

# BattenLok HS / SuperLok Roof - Insulated Concealed Fastener Wall

## Northern Standard Gutter - Fixed with Low or High Eave Plate

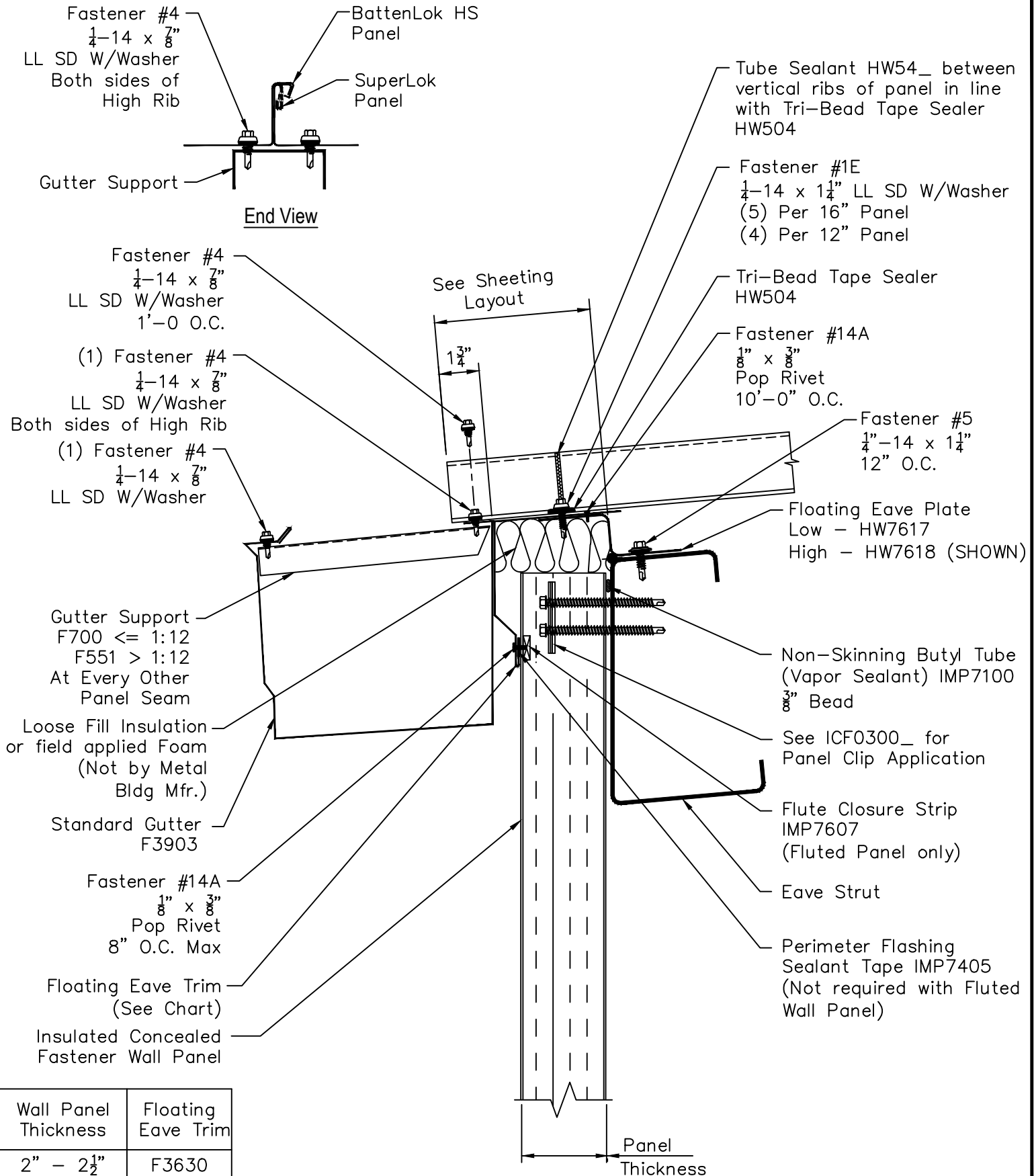
Page **BLI02016**  
 Date **May '16** Rev. **05**



# BattenLok HS / SuperLok Roof - Insulated Concealed Fastener Wall

## Northern Standard Gutter - Floating with Low or High Eave Plate

Page **BLI03013**  
 Date **May '16** Rev. **05**



Wall Panel Thickness	Floating Eave Trim
2" - 2 $\frac{1}{2}$ "	F3630
3" - 4"	F3632
5" - 6"	F3634

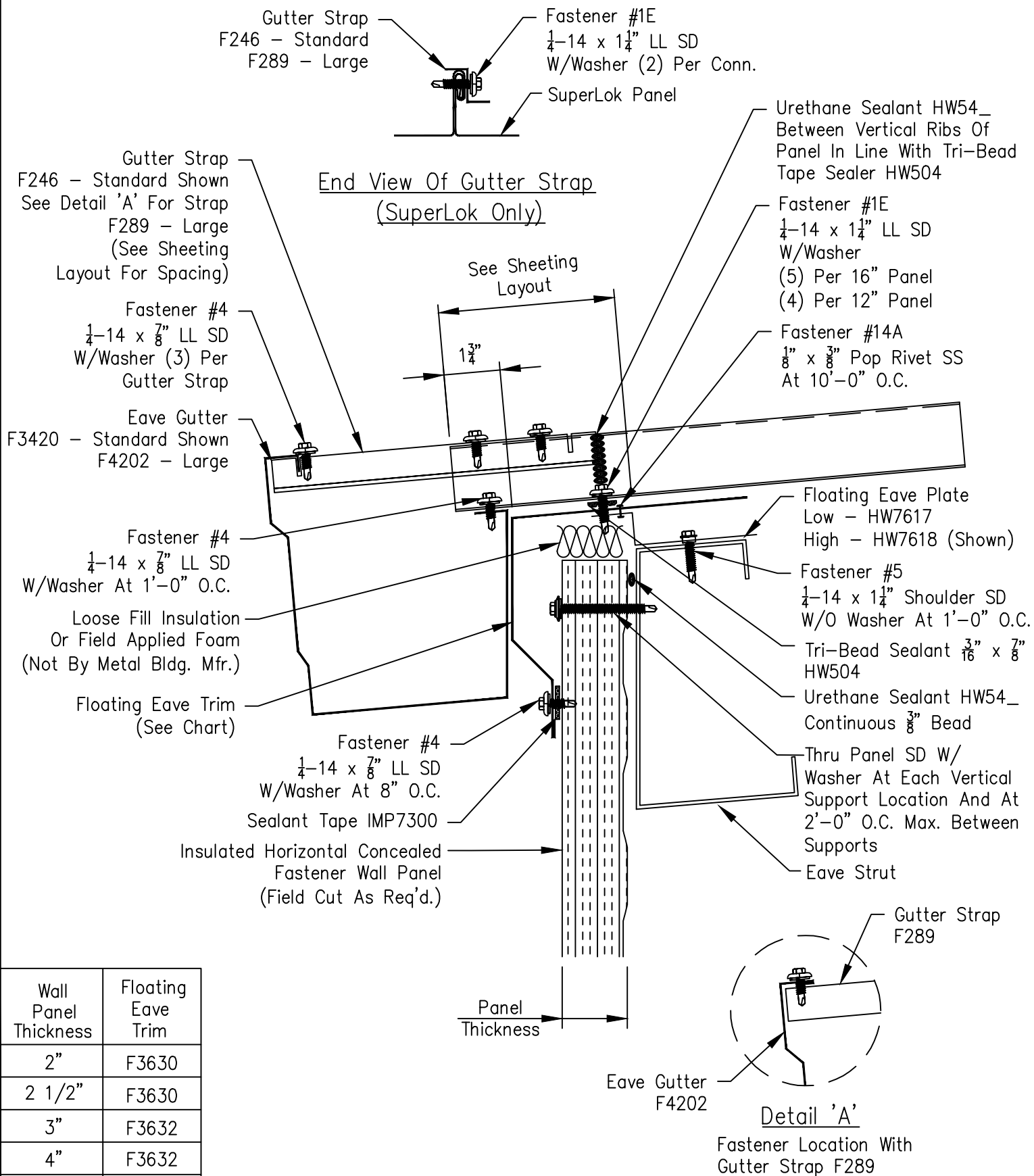


BattenLok HS / SuperLok Roof - Horizontal Insulated Concealed Fastener Wall  
Southern Standard and Southern Large Gutter  
Floating With Low Or High Eave Plate

Page  
BLI03201

Date  
May '14

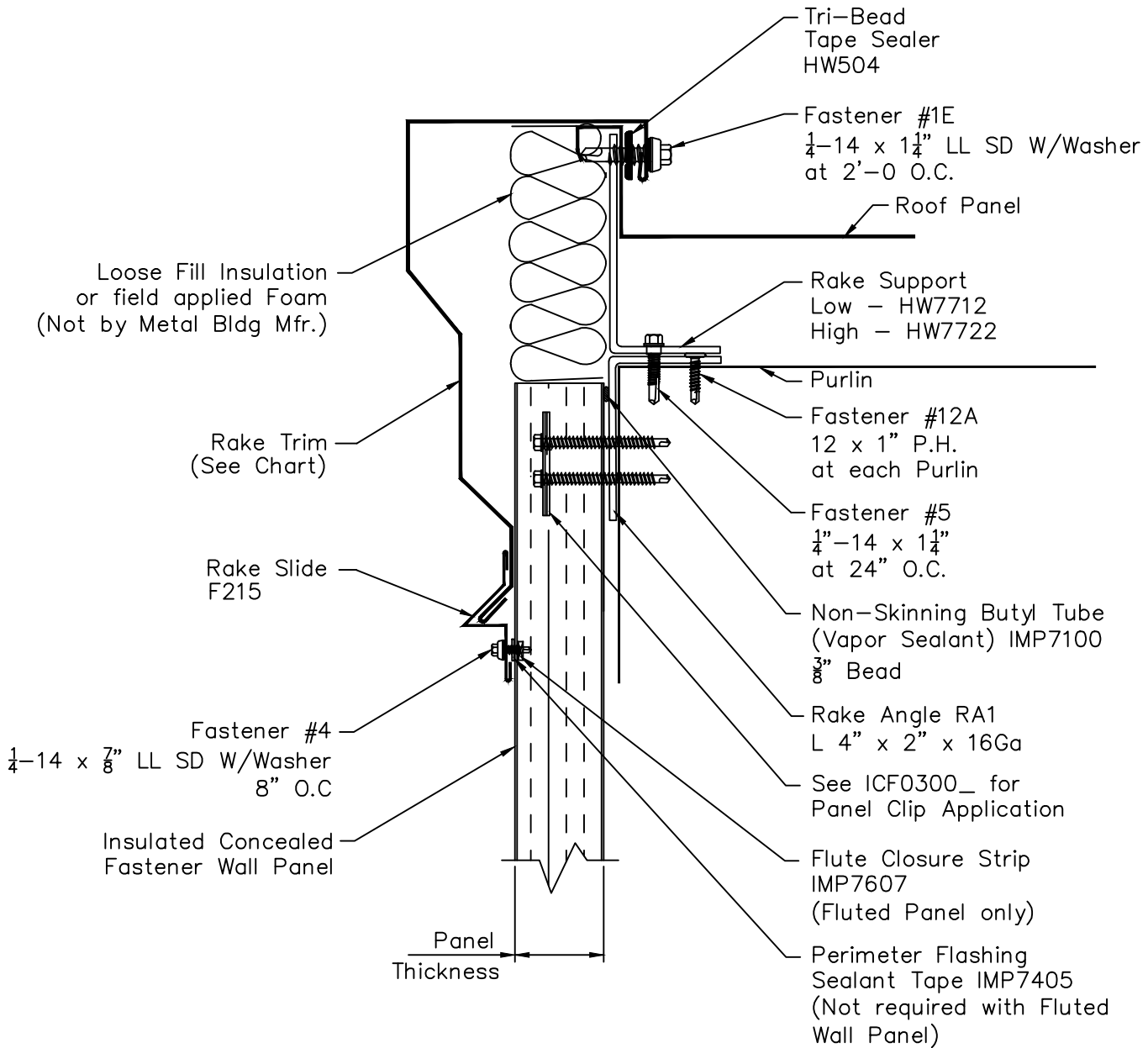
Rev  
01



# BL HS / SL Roof - Insulated Concealed Fastener Wall

## Southern Standard and Southern Large Rake Trim

Page **BLI06005**  
 Date **May '16** Rev. **03**



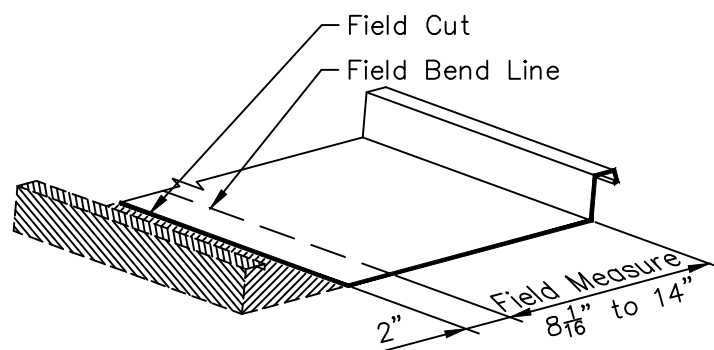
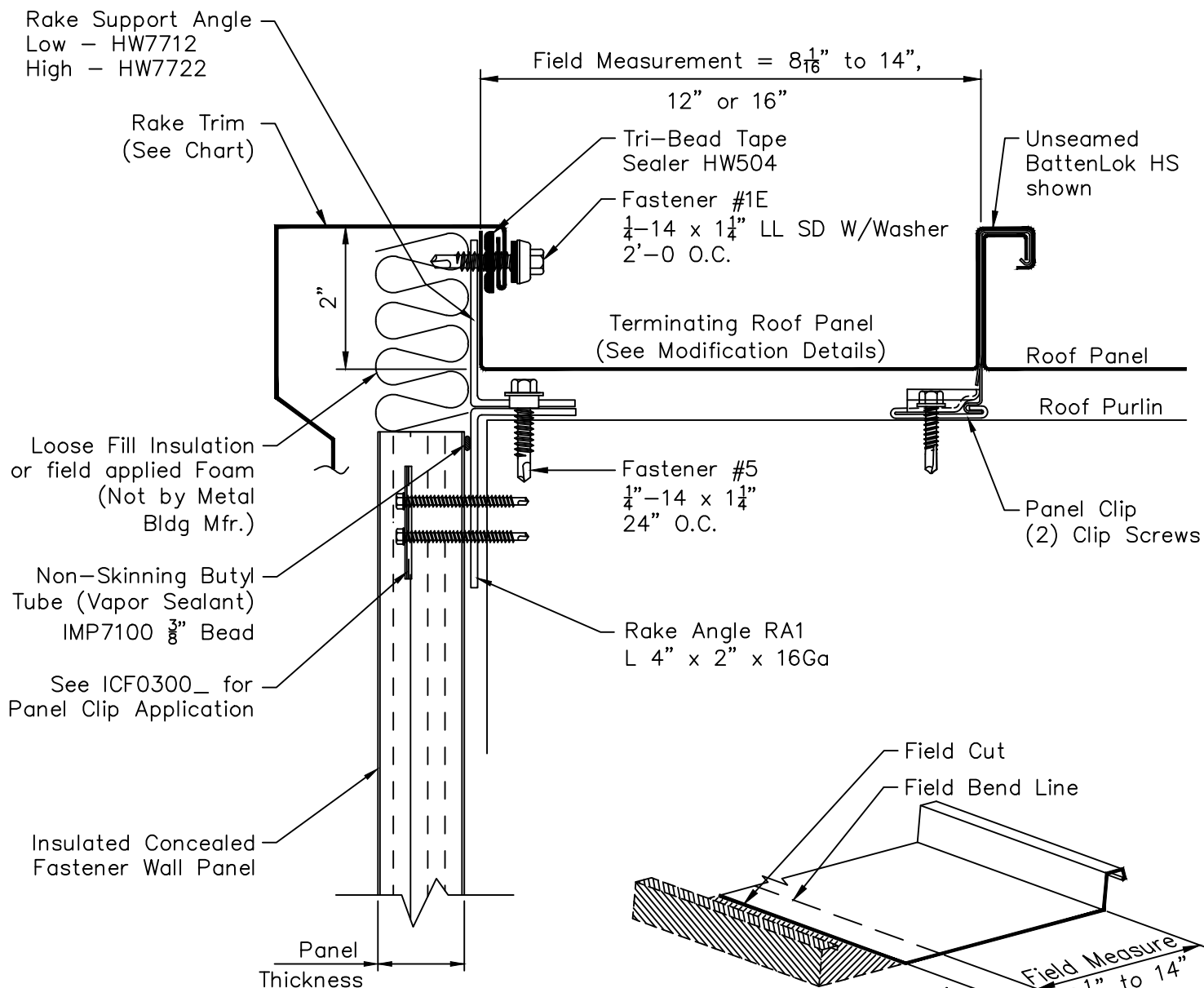
Wall Panel Thickness	Standard Peak Box	Large Peak Box
2"	F3950	F3956
2 1/2"	F3951	F3957
3"	F3952	F3958
4"	F3953	F3959
5"	F3954	F3960
6"	F3955	F3961

# BattenLok HS / SuperLok Roof - Insulated Concealed Fastener Wall

## Full Width Panel or Field Cut and Bent to Width Panel at Termination

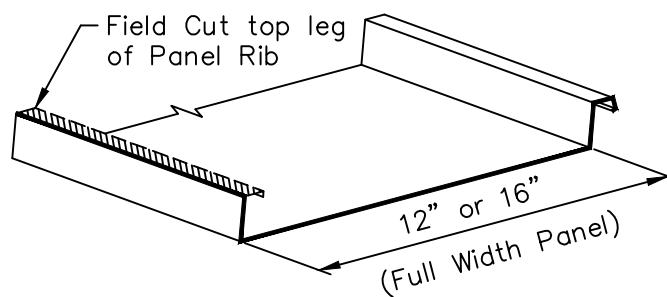
Page **BLI06010**

Date **Apr '16** Rev. **02**



Panel Field Modifications

$8\frac{1}{16}$ " to 14"



Panel Field Modifications

12" or 16"

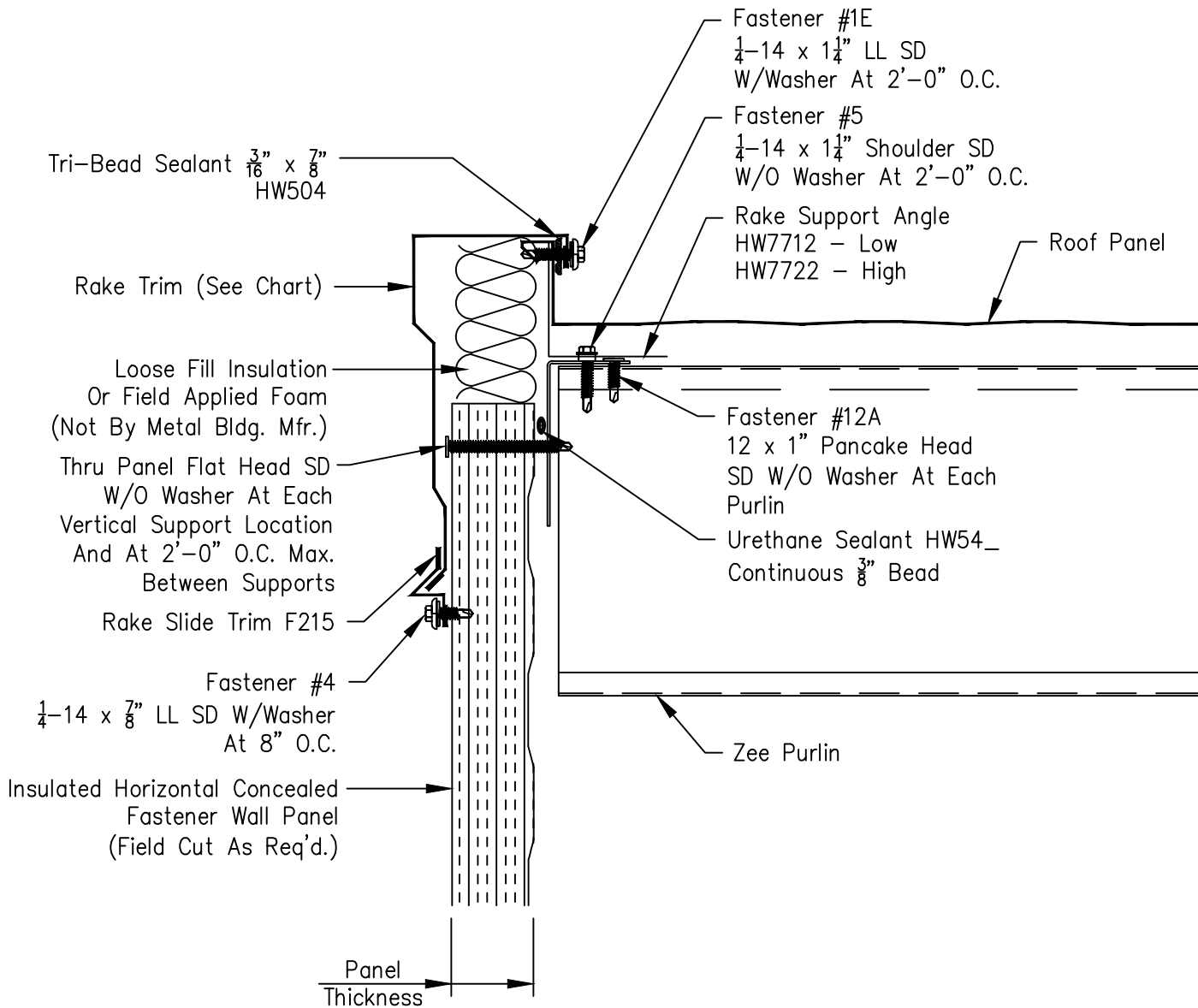
Wall Panel Thickness	Std. Peak Box	Std. Large Peak Box
2"	F3950	F3956
2 $\frac{1}{2}$ "	F3951	F3957
3"	F3952	F3958
4"	F3953	F3959
5"	F3954	F3960
6"	F3955	F3961

BattenLok HS / SuperLok Roof - Horizontal Insulated Concealed Fastener Wall Panel  
Southern Standard And Southern Large Rake Trim

Page  
BLI06205

Date  
May '16

Rev  
01

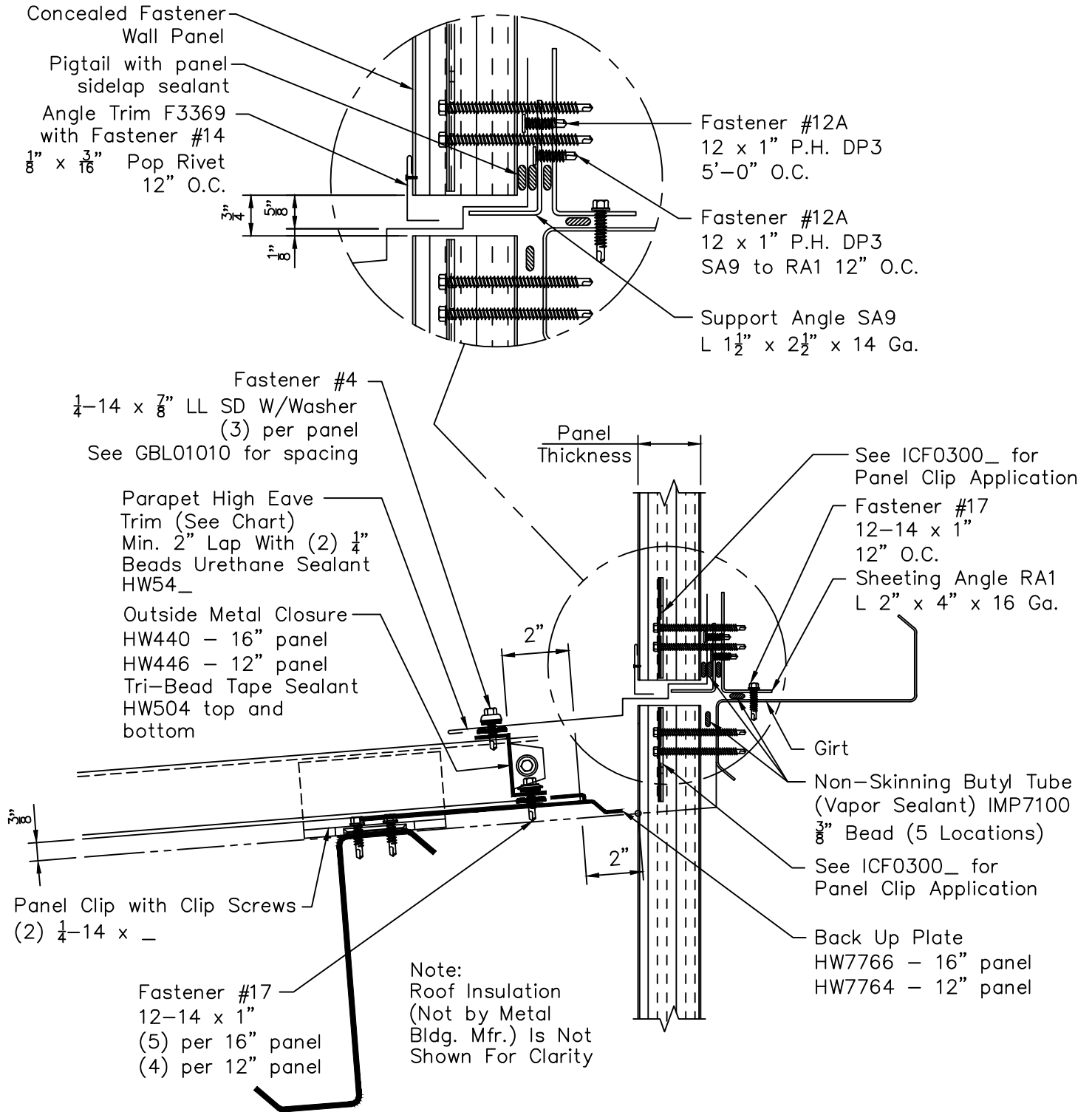


Wall Panel Thickness	Standard Rake Trim	Large Rake Trim
2"	F3950	F3956
2 1/2"	F3951	F3957
3"	F3952	F3958
4"	F3953	F3959
5"	F3954	F3960
6"	F3955	F3961

# BattenLok HS / SuperLok Roof - Insulated Concealed Fastener Wall

## Below Eave Tie-In - Common Wall - Low Clip

Page **BLI08001**  
 Date **Apr '16** Rev. **03**



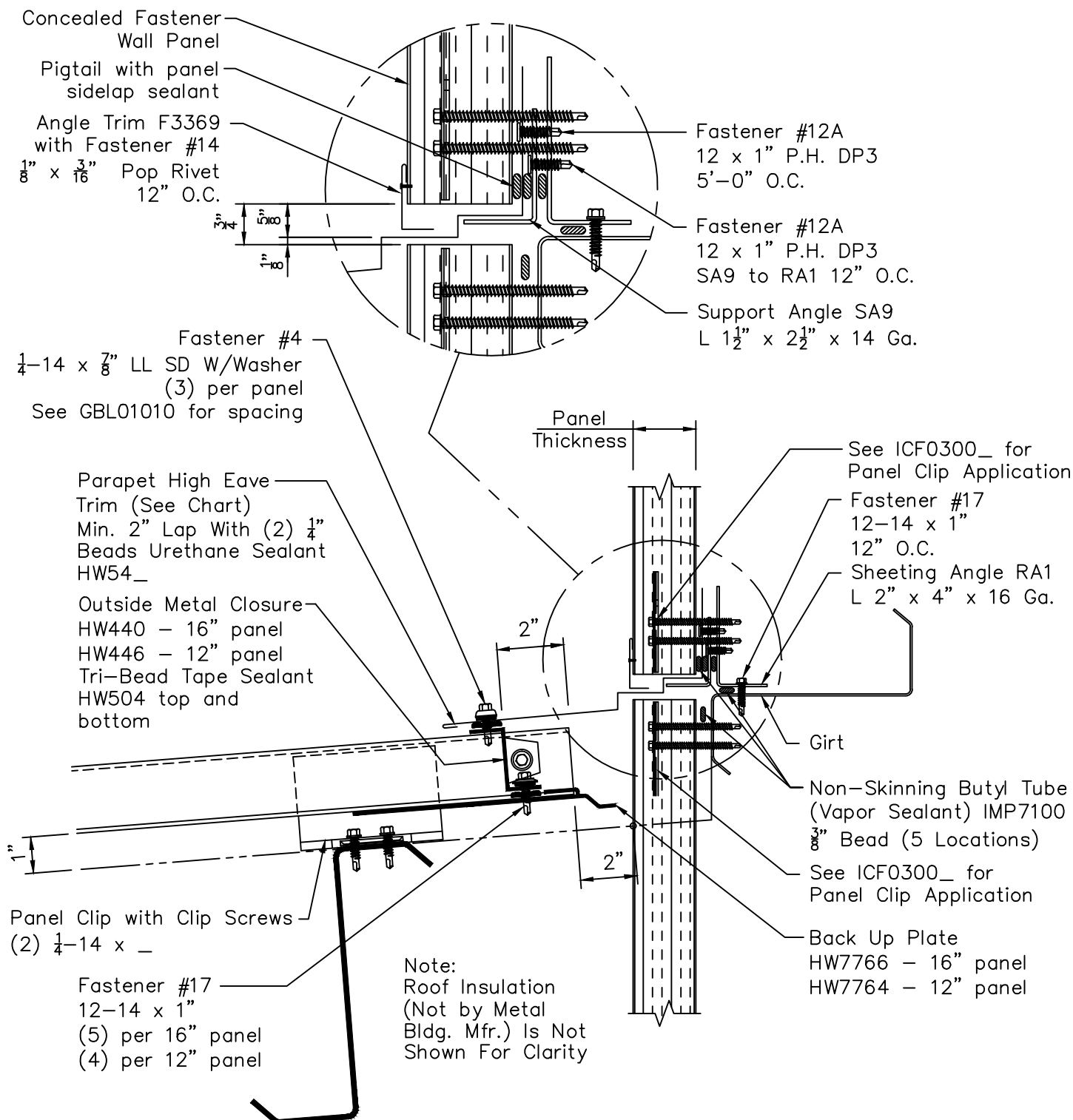
Parapet High Eave Trim						
	Wall Panel Thickness					
Roof Slope	2"	$2\frac{1}{2}$ "	3"	4"	5"	6"
thru 4:12	F3770	F3771	F3773	F3774	F3775	F3776
Parametric	F3513					

# BattenLok HS / SuperLok Roof - Insulated Concealed Fastener Wall

## Below Eave Tie-In - Common Wall - High Clip

Page **BLI08003**

Date **Apr '16** Rev. **03**



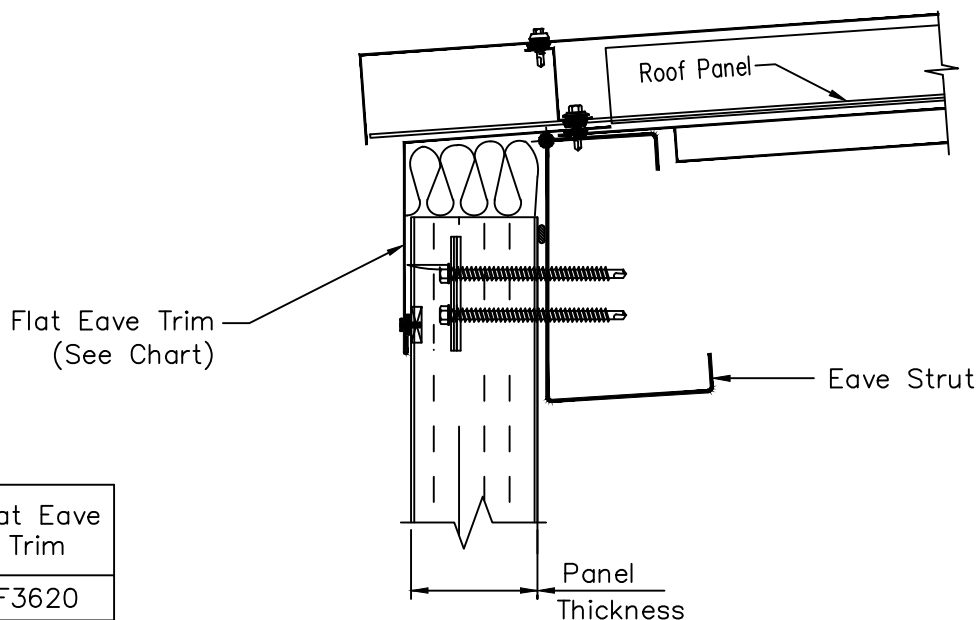
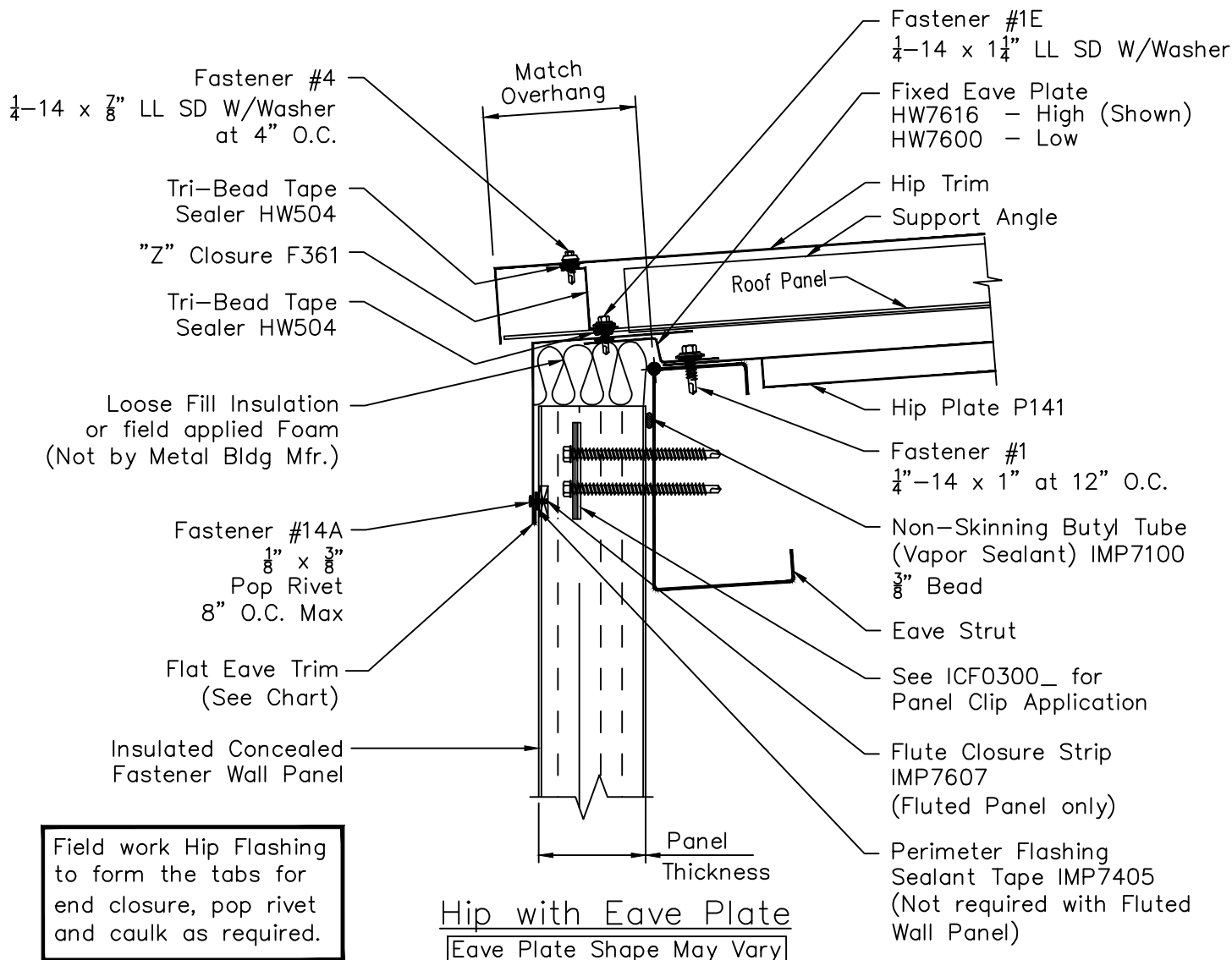
Parapet High Eave Trim						
	Wall Panel Thickness					
Roof Slope	2"	$2\frac{1}{2}$ "	3"	4"	5"	6"
thru 4:12	F3770	F3771	F3773	F3774	F3775	F3776
Parametric	F3513					

# BattenLok HS / SuperLok Roof - Insulated Concealed Fastener Wall

## Flat Eave Trim - Fixed with and without Eave Plate at Hip Condition

Page **BLI10006**

Date **Apr '16** Rev. **02**



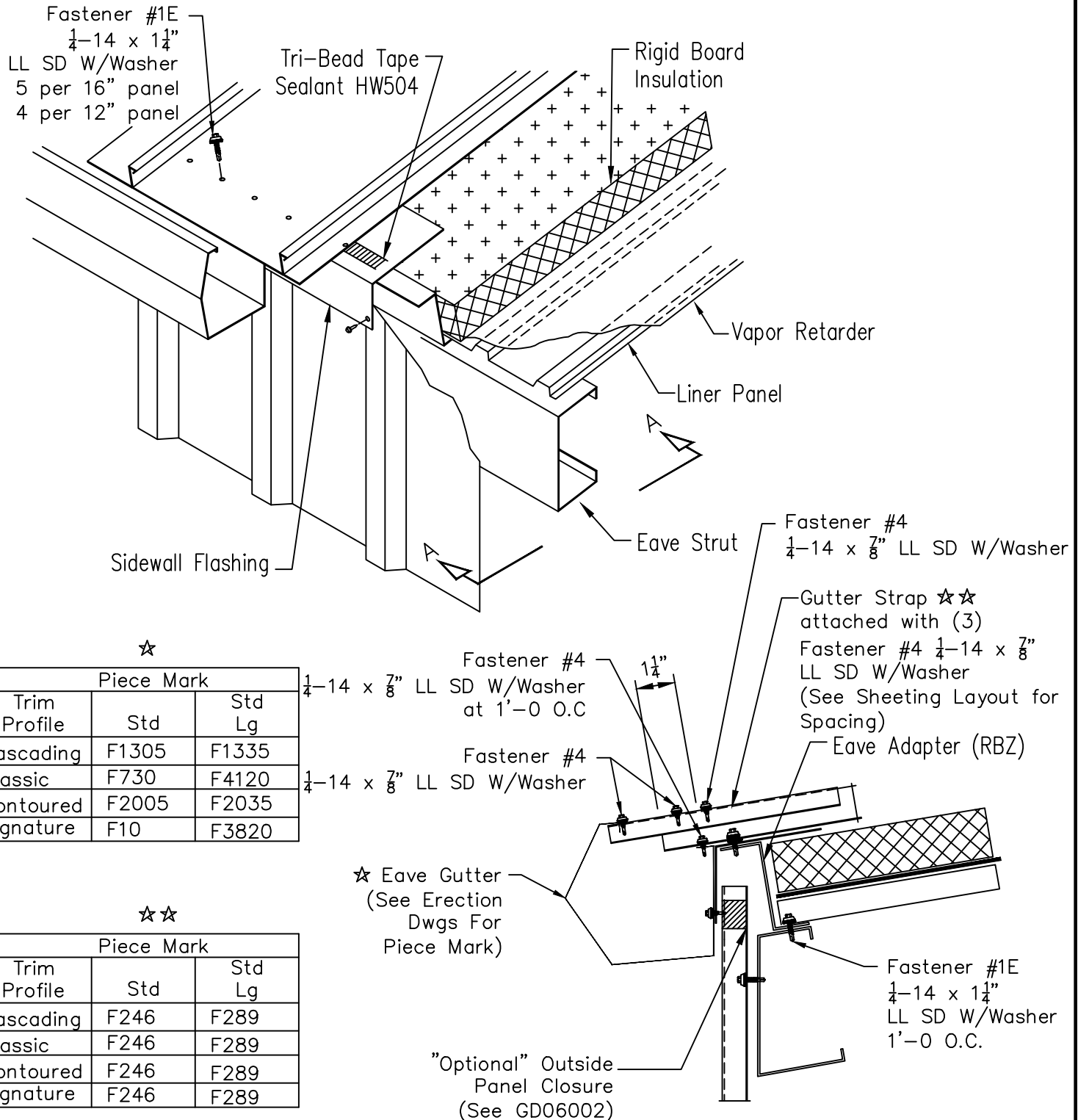
Wall Panel Thickness	Flat Eave Trim
2" - 2 1/2"	F3620
3" - 4"	F3622
5" - 6"	F3624

# BattenLok HS / SuperLok Rigid Board Insulation at Eave

Page  
**GBL12005**

Date  
**Feb '16**

Rev.  
**06**



☆

Piece Mark		
Trim Profile	Std	Std Lg
Cascading	F1305	F1335
Classic	F730	F4120
Contoured	F2005	F2035
Signature	F10	F3820

☆☆

Piece Mark		
Trim Profile	Std	Std Lg
Cascading	F246	F289
Classic	F246	F289
Contoured	F246	F289
Signature	F246	F289

Flashing profile may vary dependent upon project order.  
Attachment as illustrated are applicable for all profiles.

A VAPOR RETARDER MAY BE NECESSARY TO PROTECT ROOFING COMPONENTS WHEN HIGH INTERIOR HUMIDITY IS A FACTOR. THE NEED FOR A VAPOR RETARDER, AS WELL AS THE TYPE, PLACEMENT, AND LOCATION SHOULD BE DETERMINED BY AN ARCHITECT OR MECHANICAL ENGINEER.