

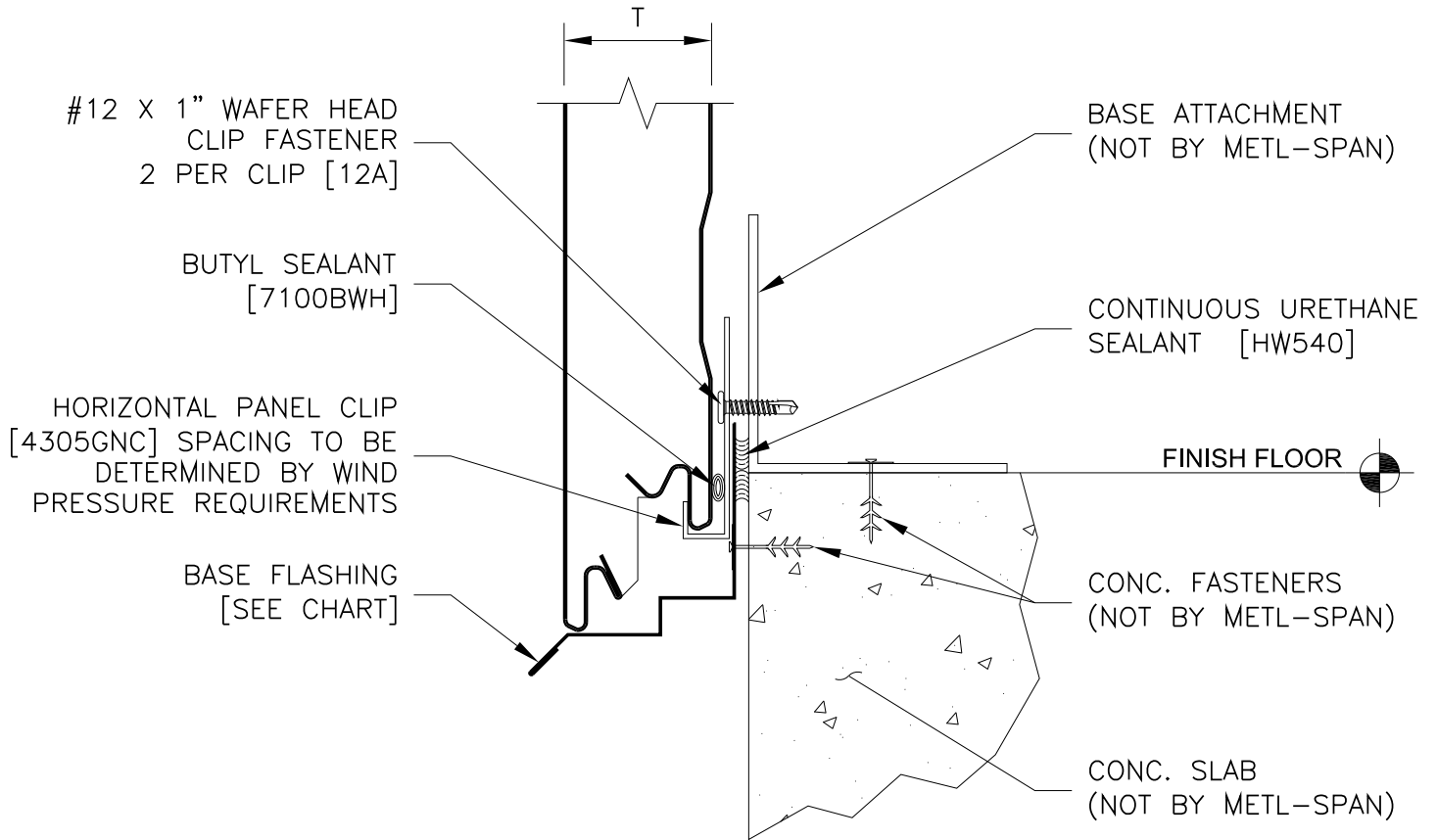
REFER TO SHEET "CI-INFO" FOR ADDITIONAL INFORMATION REGARDING THE APPLICATION OF SEALANTS, FASTENERS, AND CLOSURE MATERIALS.  
CONSULT METL-SPAN TO DETERMINE ALLOWABLE LOAD AND SPACING OF ATTACHMENT FASTENERS.

T	BASE FLASHING
2"	F5002
2.5"	F5014
2.75"	F5072
3"	F5032
4"	F5053

COMMERCIAL AND INDUSTRIAL

HORIZ BASE DETAIL AT FLOOR W/ LIP TRIM

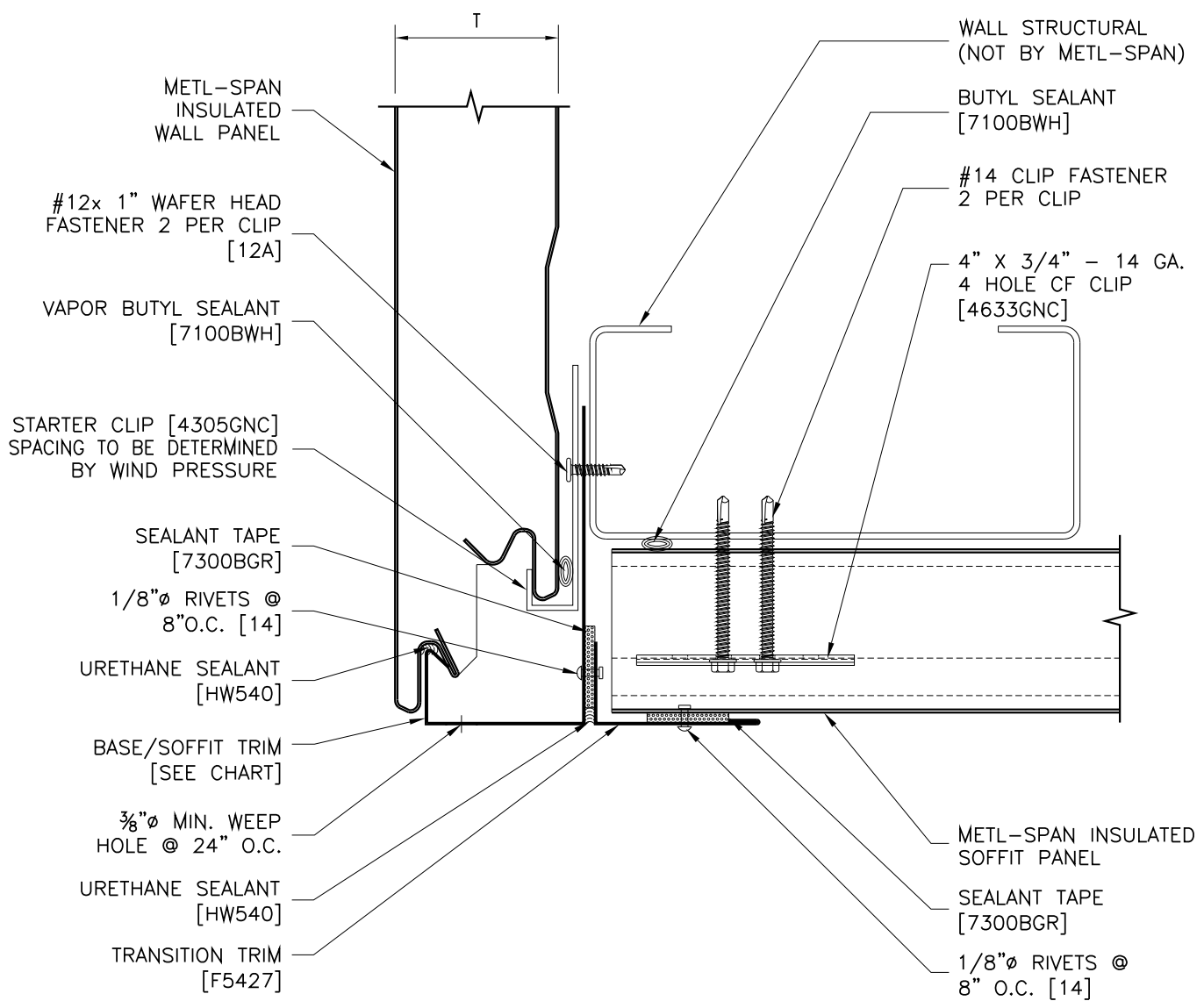
2H-BE-01  
DATE: March 19, 2015



REFER TO SHEET "CI-INFO" FOR ADDITIONAL INFORMATION REGARDING THE APPLICATION OF SEALANTS, FASTENERS, AND CLOSURE MATERIALS.  
CONSULT METL-SPAN TO DETERMINE ALLOWABLE LOAD AND SPACING OF ATTACHMENT FASTENERS.

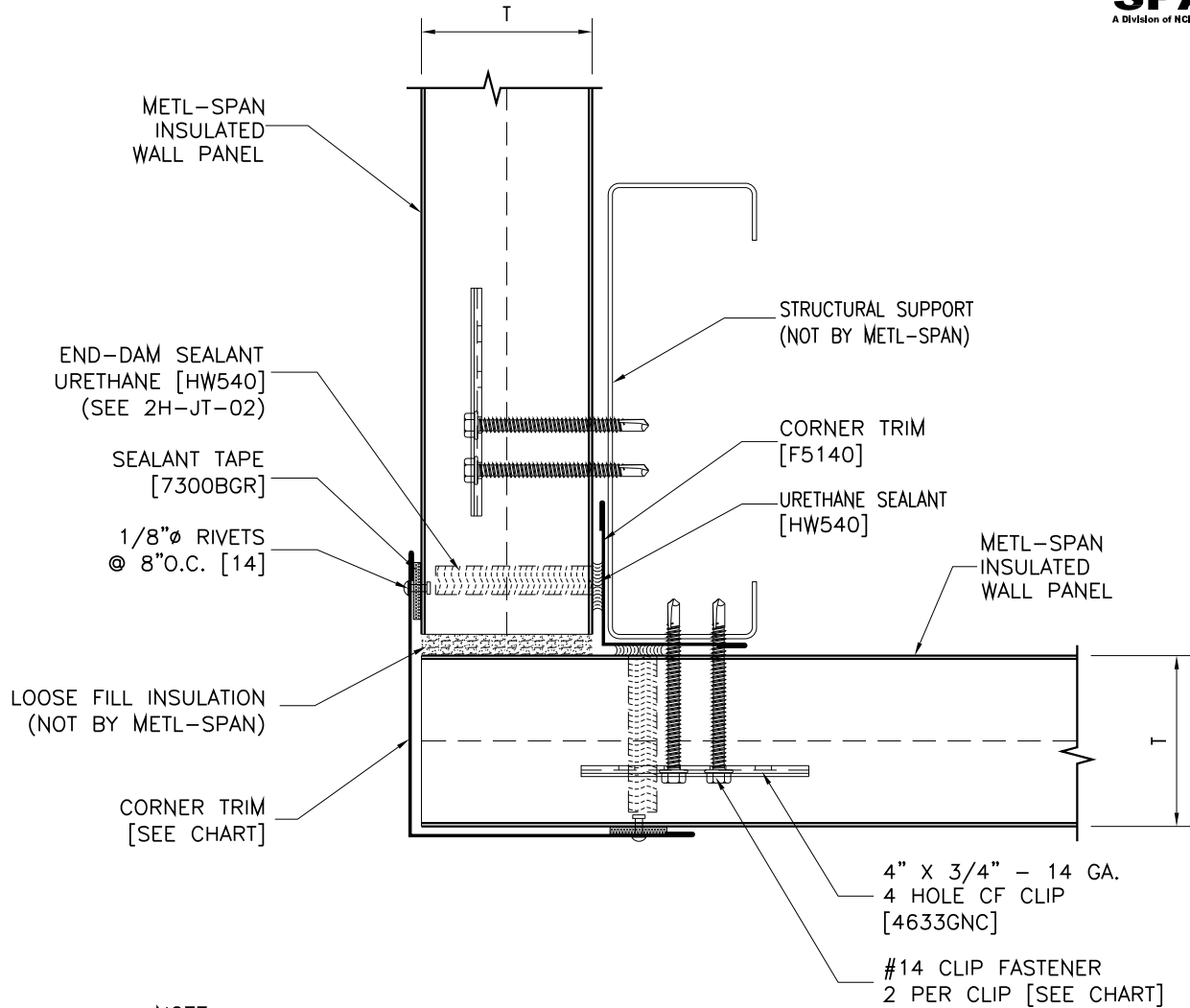
T	BASE FLASHING
2"	F5001
2.5"	F5013
2.75"	F5071
3"	F5034
4"	F5050

COMMERCIAL AND INDUSTRIAL	HORIZ. OVERHANGING BASE W/ DRIP TRIM	2H-BE-02 DATE: March 19, 2015
---------------------------	---	----------------------------------



REFER TO SHEET "CI-INFO" FOR ADDITIONAL INFORMATION REGARDING THE APPLICATION OF SEALANTS, FASTENERS, AND CLOSURE MATERIALS.  
CONSULT METL-SPAN TO DETERMINE ALLOWABLE LOAD AND SPACING OF ATTACHMENT FASTENERS.

T	BASE FLASHING
2"	F5733
2.5"	F5735
3"	F5737
4"	F5739



NOTE:  
SEE FASTENER SHEET "2FSTN-01A" THROUGH SHEET "2FSTN-01D" FOR FASTENING APPLICATION. ADDITIONAL INTERIOR FASTENERS MAY BE REQUIRED BASED ON NEGATIVE WIND PRESSURES.

WALL THICKNESS T	OUTSIDE CORNER TRIM	WALL CLIP SCREW TEK III	WALL CLIP SCREW TEK V	WALL CLIP SCREW TYPE B
2"	F5102	1616PNC	1724PNC	1816PNC
2.5"	F5103	1624PNC	1732PNC	1824PNC
2.75"	F5105	1624PNC	1732PNC	1824PNC
3"	F5104	1624PNC	1732PNC	1824PNC
4"	F5101	1632PNC	1740PNC	1832PNC

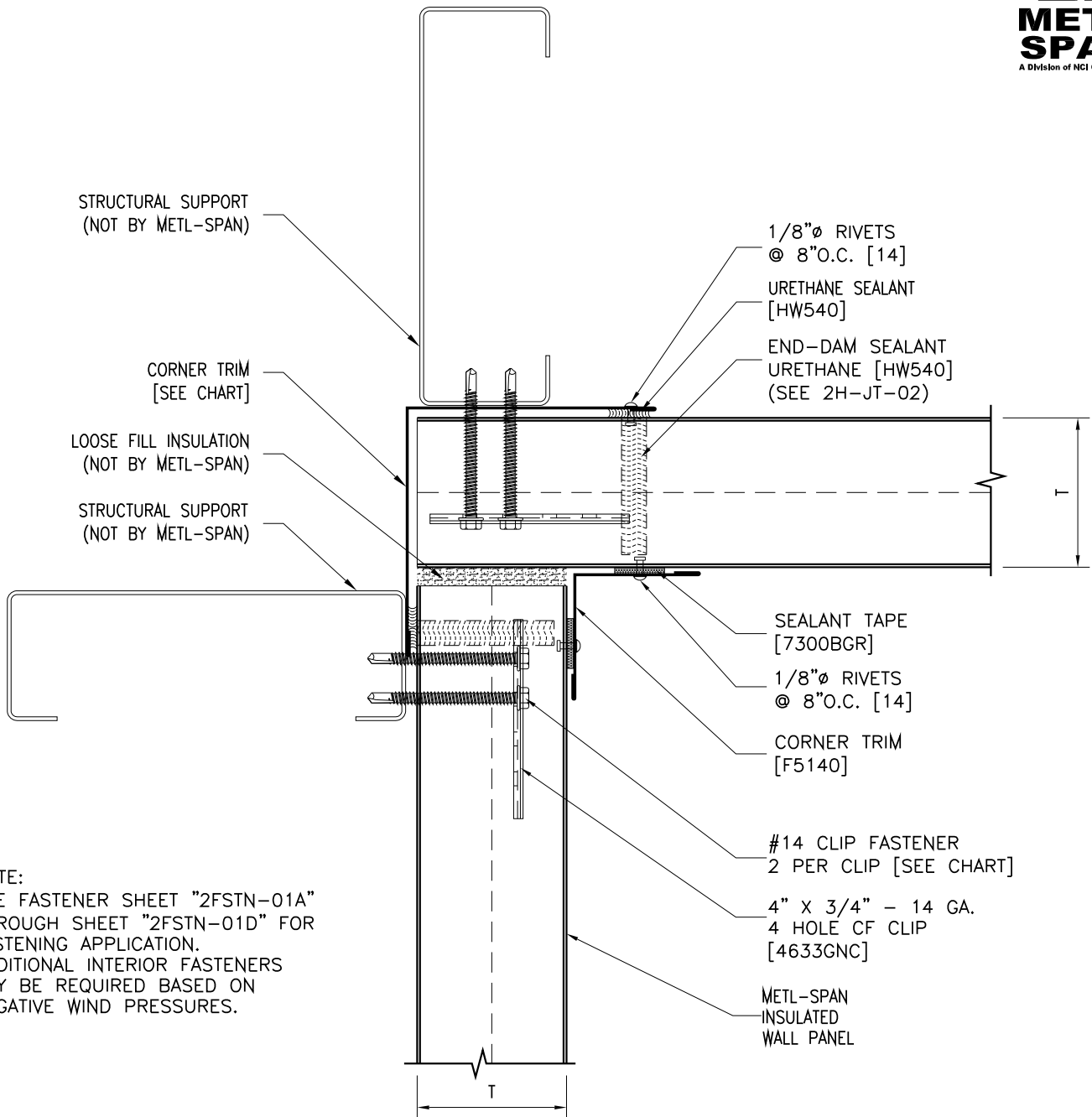
REFER TO SHEET "CI-INFO" FOR ADDITIONAL INFORMATION REGARDING THE APPLICATION OF SEALANTS, FASTENERS, AND CLOSURE MATERIALS. CONSULT METL-SPAN TO DETERMINE ALLOWABLE LOAD AND SPACING OF ATTACHMENT FASTENERS.

COMMERCIAL AND INDUSTRIAL

HORIZONTAL OUTSIDE CORNER DETAIL

2H-CE-01

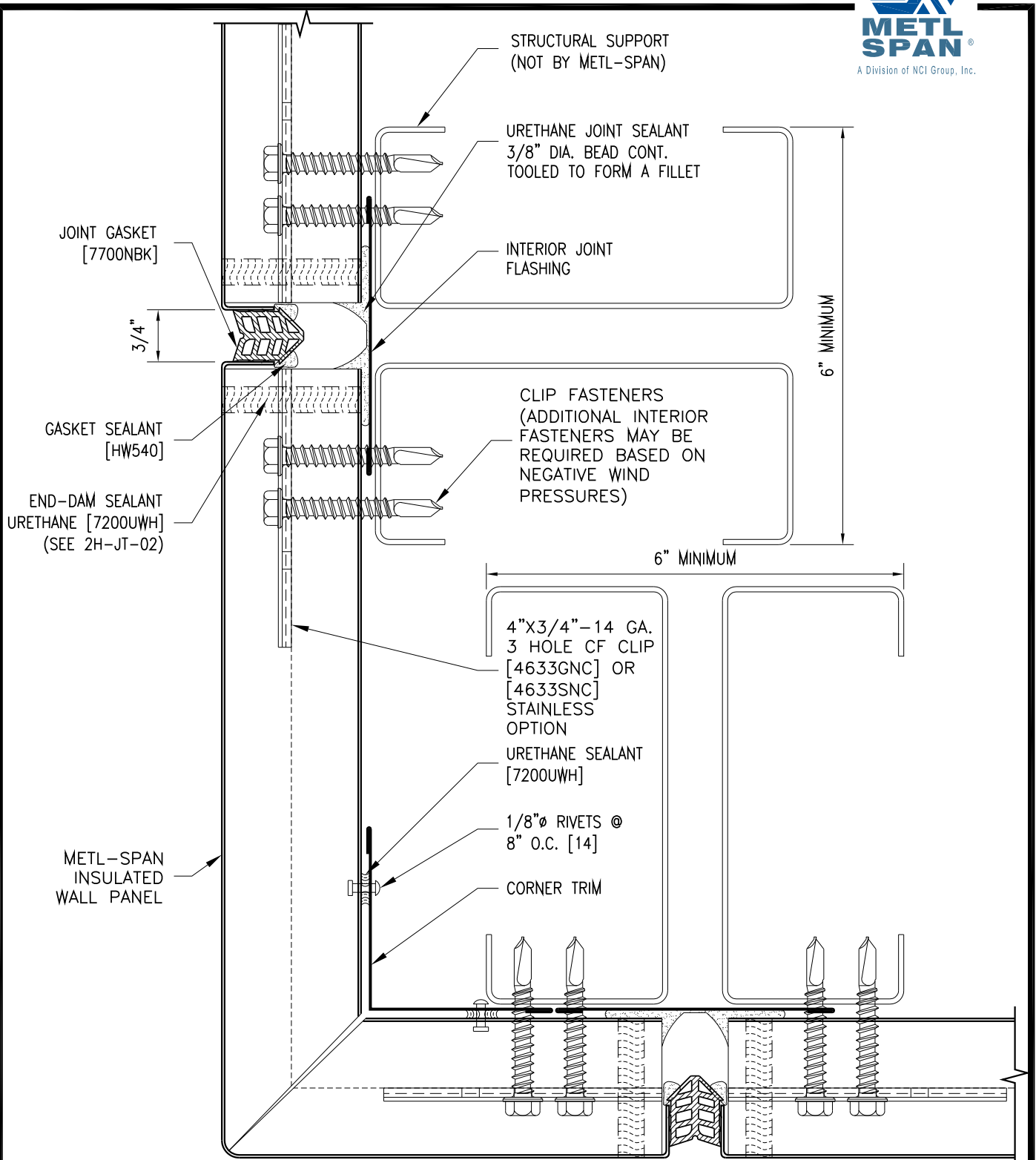
DATE: March 24, 2015



NOTE:  
SEE FASTENER SHEET "2FSTN-01A"  
THROUGH SHEET "2FSTN-01D" FOR  
FASTENING APPLICATION.  
ADDITIONAL INTERIOR FASTENERS  
MAY BE REQUIRED BASED ON  
NEGATIVE WIND PRESSURES.

WALL THICKNESS T	INSIDE CORNER TRIM	WALL CLIP SCREW TEK III	WALL CLIP SCREW TEK V	WALL CLIP SCREW TYPE B
2"	F5102	1616PNC	1724PNC	1816PNC
2.5"	F5103	1624PNC	1732PNC	1824PNC
2.75"	F5105	1624PNC	1732PNC	1824PNC
3"	F5104	1624PNC	1732PNC	1824PNC
4"	F5101	1632PNC	1740PNC	1832PNC

REFER TO SHEET "CI-INFO" FOR ADDITIONAL INFORMATION REGARDING THE APPLICATION OF SEALANTS, FASTENERS, AND CLOSURE MATERIALS. CONSULT METL-SPAN TO DETERMINE ALLOWABLE LOAD AND SPACING OF ATTACHMENT FASTENERS.



REFER TO SHEET "CI-CF-INFO" FOR ADDITIONAL INFORMATION REGARDING THE APPLICATION OF SEALANTS, FASTENERS, AND CLOSURE MATERIALS. CONSULT METL-SPAN TO DETERMINE ALLOWABLE LOAD AND SPACING OF ATTACHMENT FASTENERS.

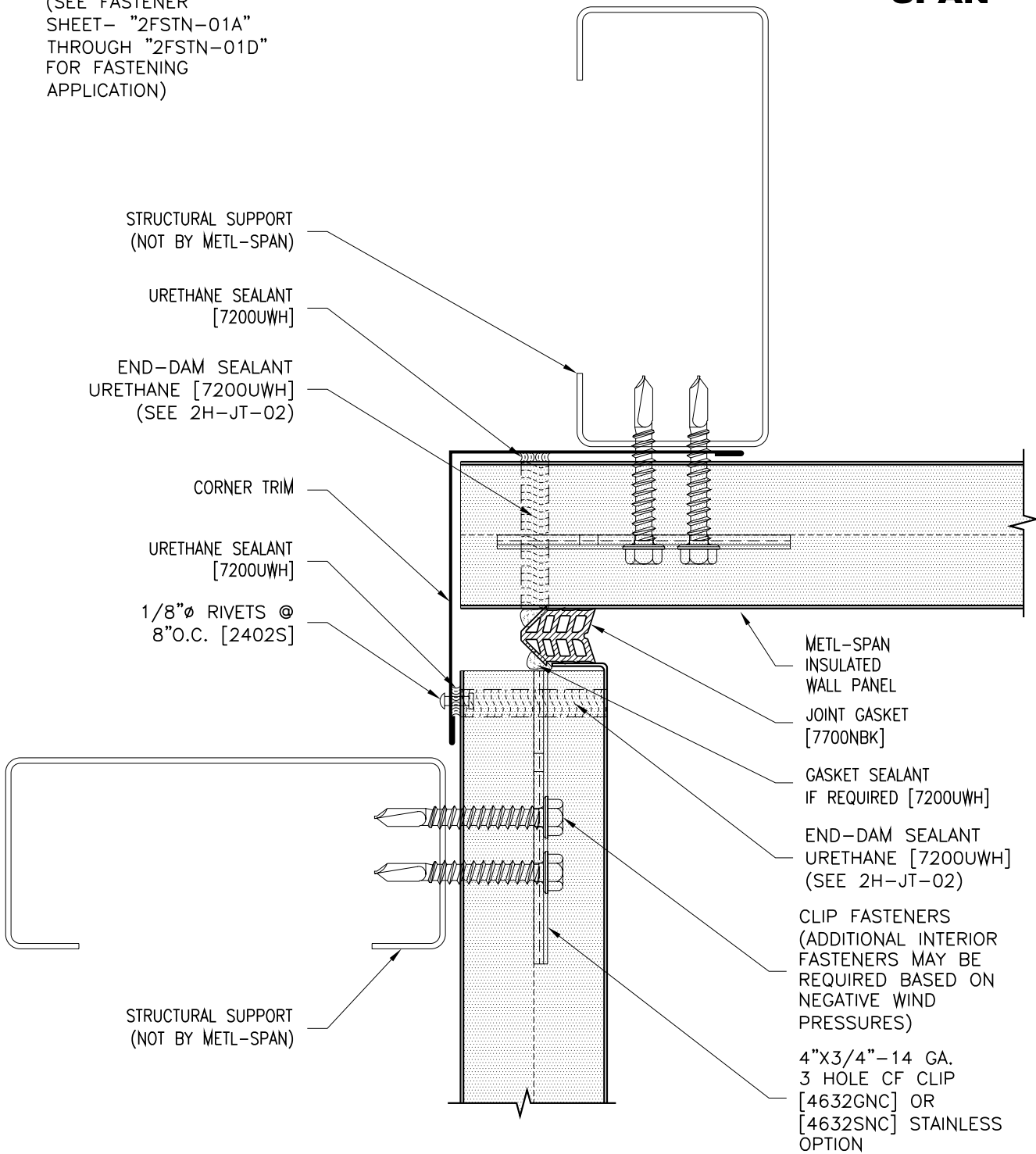
COMMERCIAL &  
INDUSTRIAL

C&I HORIZONTAL  
TRIMLESS  
OUTSIDE CORNER DETAIL

2H-CE-03

DATE: APRIL 12, 2016

(SEE FASTENER SHEET- "2FSTN-01A" THROUGH "2FSTN-01D" FOR FASTENING APPLICATION)



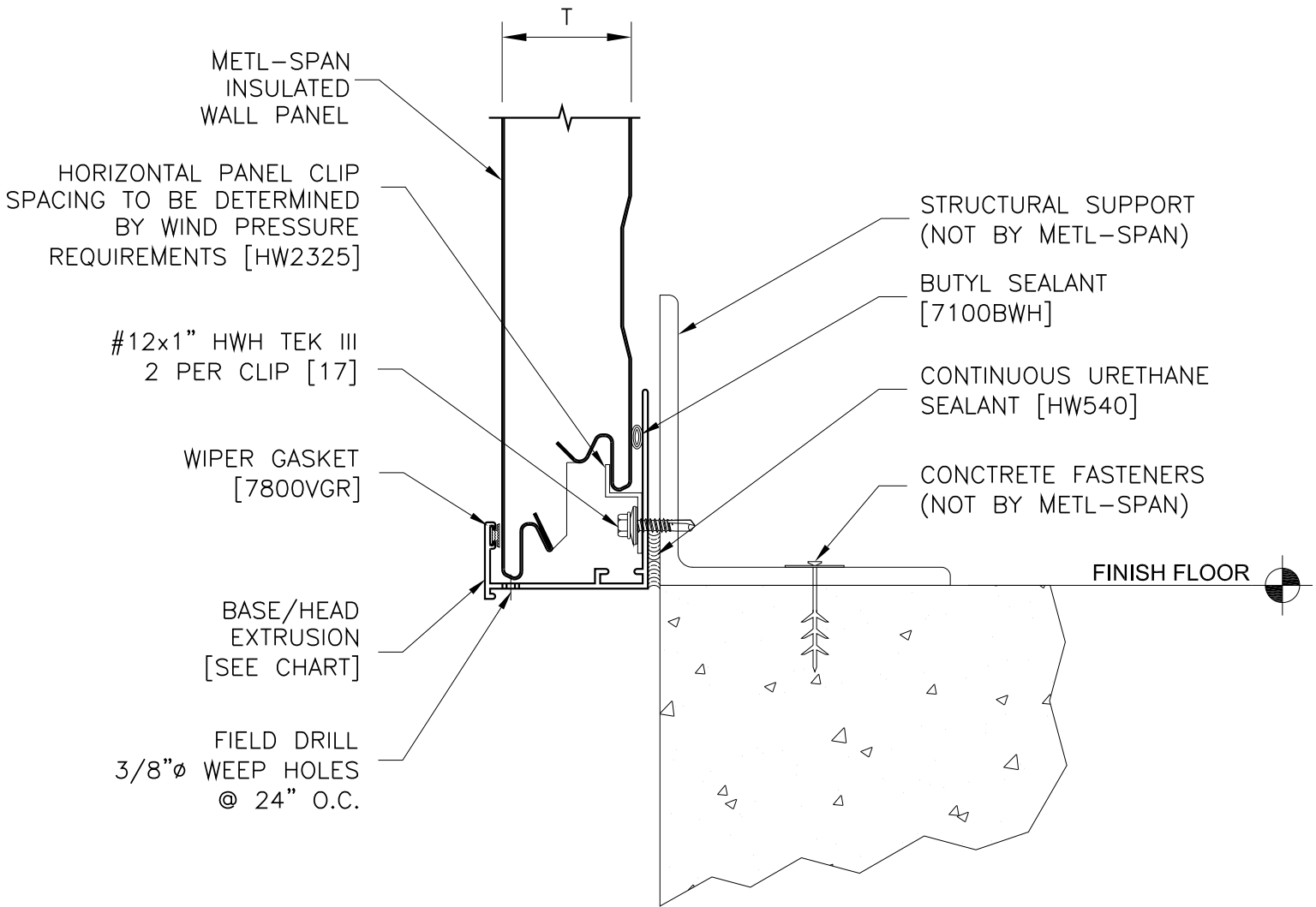
REFER TO SHEET "CI-INFO" FOR ADDITIONAL INFORMATION REGARDING THE APPLICATION OF SEALANTS, FASTENERS, AND CLOSURE MATERIALS. CONSULT METL-SPAN TO DETERMINE ALLOWABLE LOAD AND SPACING OF ATTACHMENT FASTENERS.

C&I HORIZONTAL  
DETAIL

APPLICATION:  
COMMERCIAL & INDUSTRIAL

2H-CE-04

DATE: DECEMBER 19, 2008



REFER TO SHEET "CI-INFO" FOR ADDITIONAL INFORMATION REGARDING THE APPLICATION OF SEALANTS, FASTENERS, AND CLOSURE MATERIALS.  
CONSULT METL-SPAN TO DETERMINE ALLOWABLE LOAD AND SPACING OF ATTACHMENT FASTENERS.

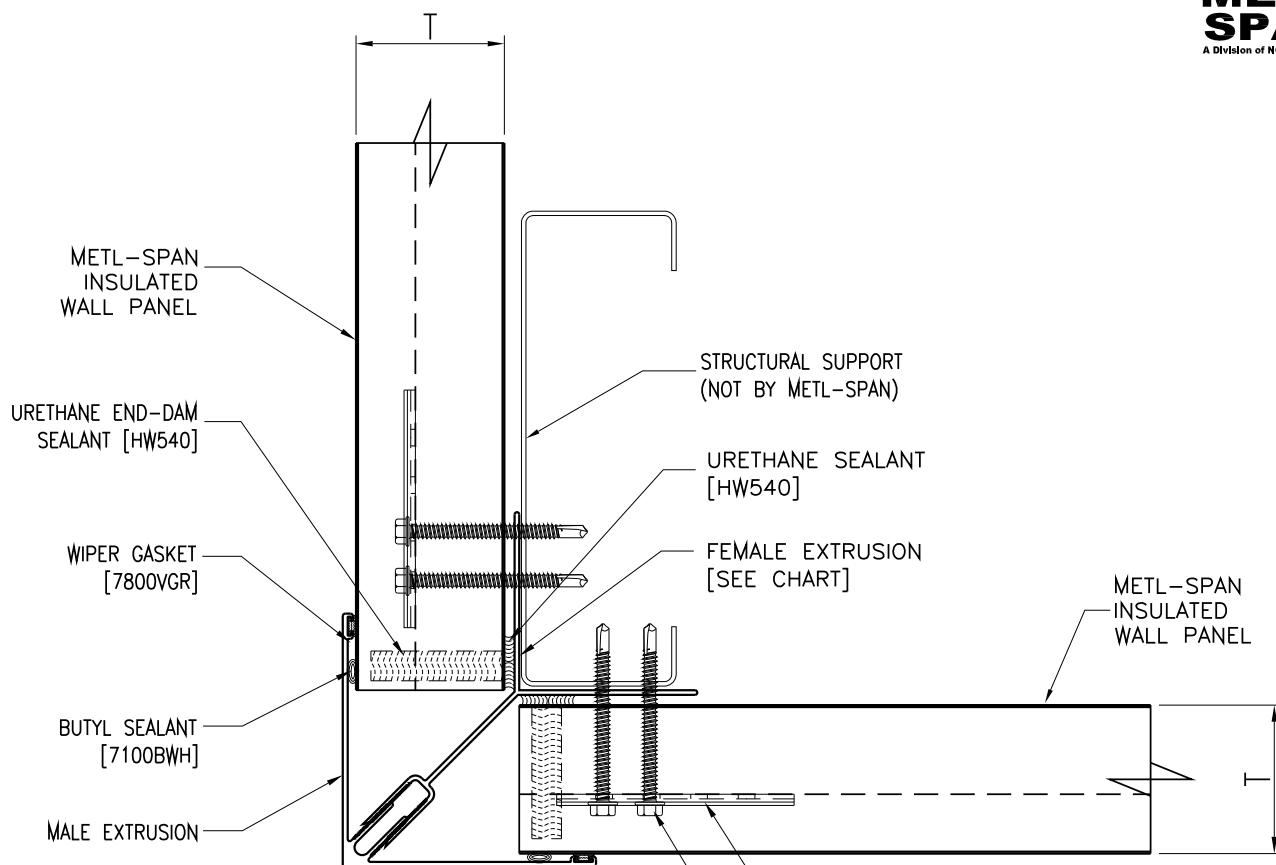
T	BASE EXTRUSION
2"	9405A
2.5"	9406A
2.75"	N/A
3"	9407A
4"	9404A

COMMERCIAL AND INDUSTRIAL

HORIZ BASE DETAIL AT FLOOR W/ EXTRUSION

2H-EB-01  
DATE: 1-6-2015





NOTE:  
SEE FASTENER SHEET "2FSTN-01A" THROUGH  
SHEET "2FSTN-01D" FOR FASTENING APPLICATION.  
ADDITIONAL INTERIOR FASTENERS MAY BE REQUIRED  
BASED ON NEGATIVE WIND PRESSURES.

4" X 3/4" - 14 GA.  
4 HOLE CF CLIP  
[4633GNC]

#14 CLIP FASTENER  
2 PER CLIP [SEE CHART]

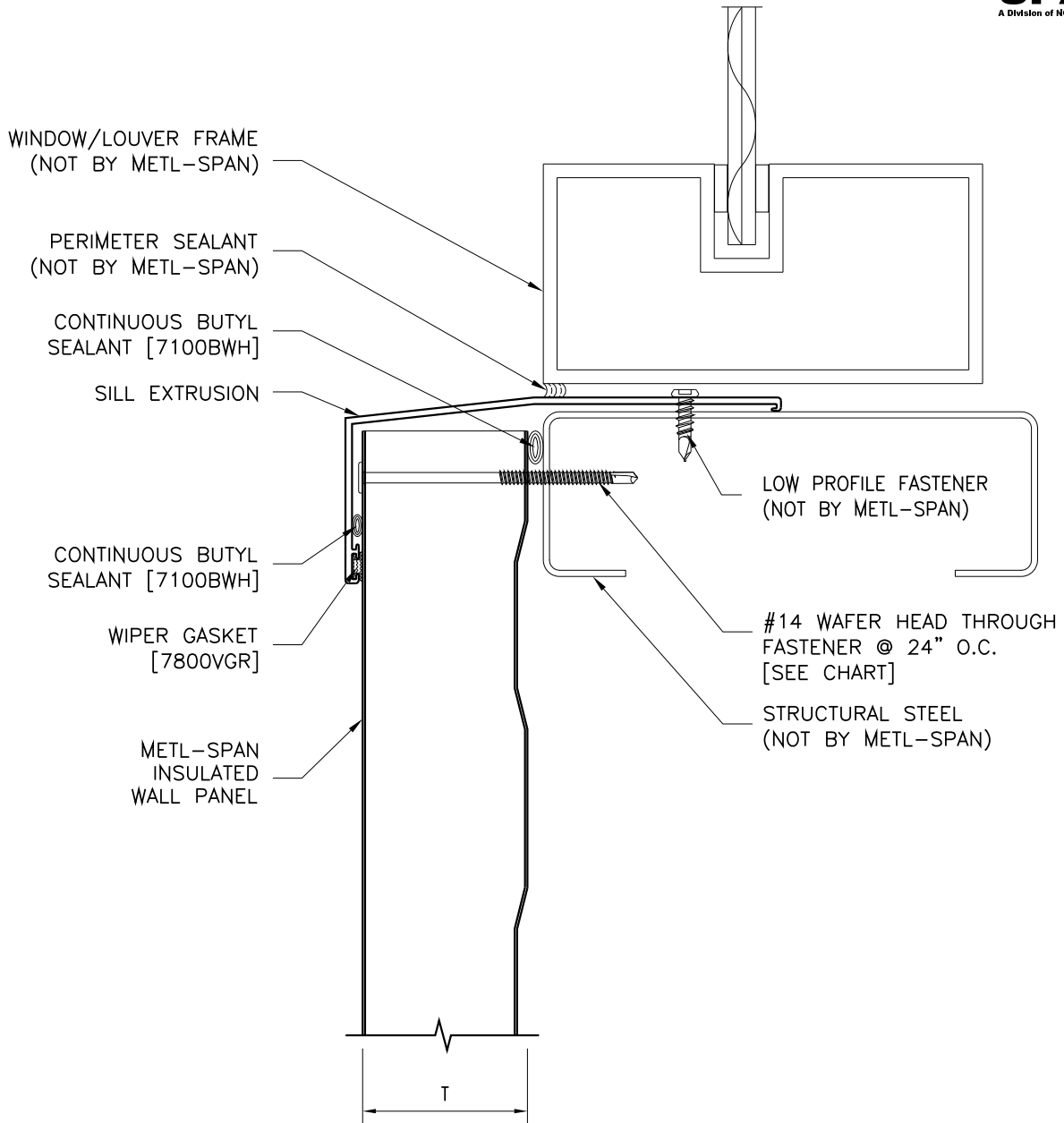
REFER TO SHEET "CI-INFO" FOR ADDITIONAL INFORMATION REGARDING THE  
APPLICATION OF SEALANTS, FASTENERS, AND CLOSURE MATERIALS.  
CONSULT METL-SPAN TO DETERMINE ALLOWABLE LOAD AND SPACING OF ATTACHMENT FASTENERS.

WALL THICKNESS T	MALE EXTRUSION	FEMALE EXTRUSION	WALL CLIP SCREW TEK III	WALL CLIP SCREW TEK V	WALL CLIP SCREW TYPE B
2"	9425ANC	9430ANC	1616PNC	1724PNC	1816PNC
2.5"	9425ANC	9431ANC	1624PNC	1732PNC	1824PNC
3"	9425ANC	9432ANC	1624PNC	1732PNC	1824PNC
4"	9429ANC	9433ANC	1632PNC	1740PNC	1832PNC

COMMERCIAL AND  
INDUSTRIAL

OUTSIDE CORNER DETAIL  
WITH EXTRUSION

2H-EC-01  
DATE: March 23, 2015



REFER TO SHEET "CI-INFO" FOR ADDITIONAL INFORMATION REGARDING THE APPLICATION OF SEALANTS, FASTENERS, AND CLOSURE MATERIALS.  
CONSULT METL-SPAN TO DETERMINE ALLOWABLE LOAD AND SPACING OF ATTACHMENT FASTENERS.

T	BASE EXTRUSION	TEK III THROUGH FASTENER
2"	9413ANC	1424PNC
2.5"	9413ANC	1432PNC
3"	9413ANC	1432PNC
4"	9412ANC	1440PNC

COMMERCIAL AND INDUSTRIAL

C&I HORIZONTAL EXTRUDED SILL DETAIL

2H-EW-03  
DATE: March 19, 2015

\* NOTE:  $\frac{1}{4}$ " CONTINUOUS BEAD  
IN BOTH FEMALE GROOVES

4" X  $\frac{3}{4}$ " - 14 GA.  
4 HOLE CF CLIP  
[4633GNC]

#14 CLIP FASTENER  
(2) PER CLIP  
(ADDITIONAL INTERIOR FASTENERS  
MAY BE REQUIRED BASED ON  
NEGATIVE WIND PRESSURES)

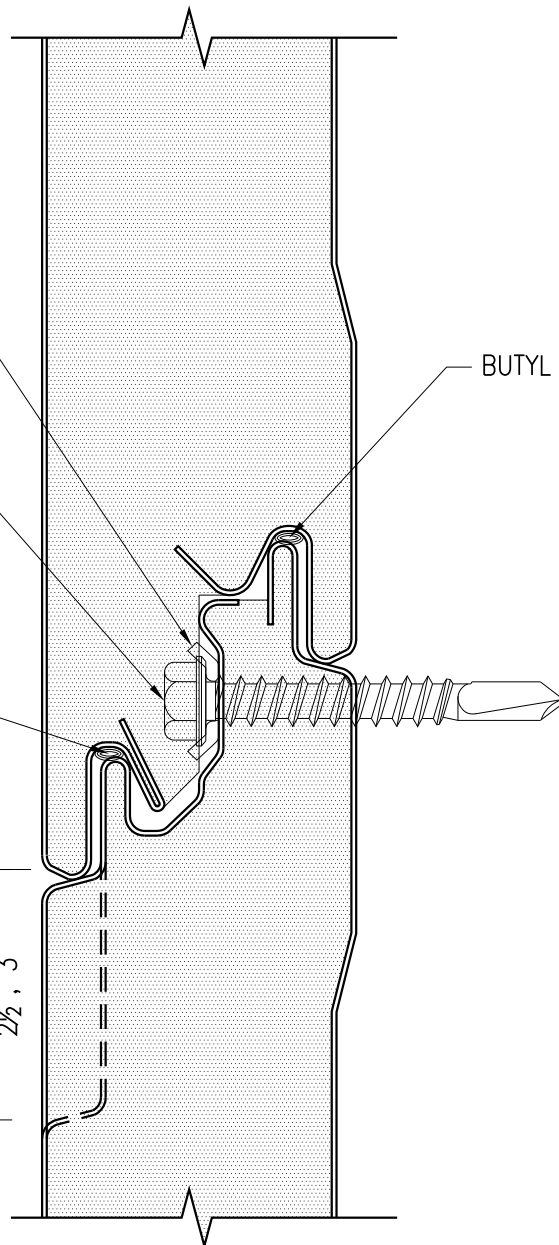
(SEE FASTENER SHEET—  
"2FSTN-01A" THROUGH  
"2FSTN-01D" FOR  
FASTENING APPLICATION)

BUTYL \*

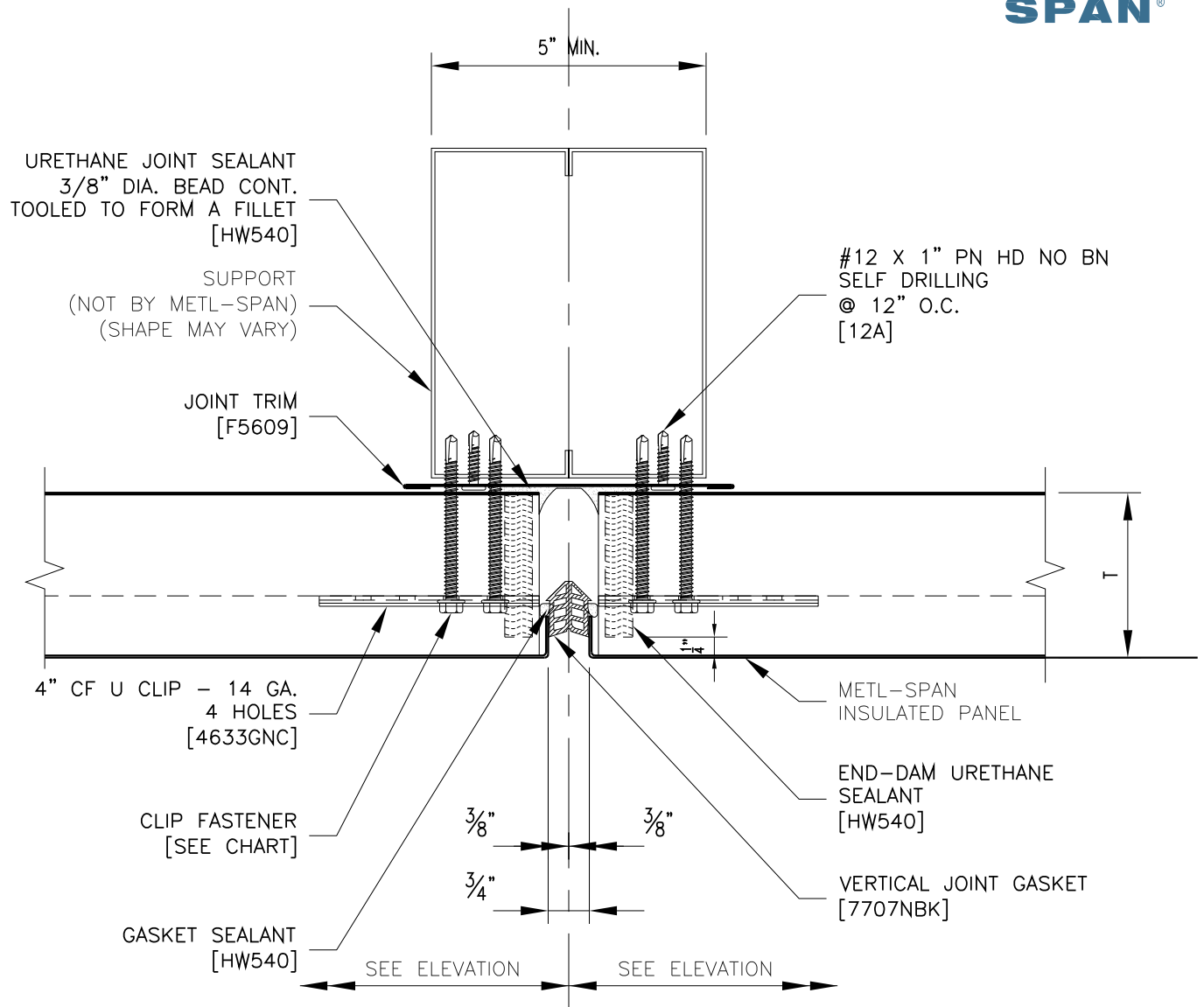
BUTYL \*

MODULE

REVEAL  
 $\frac{1}{4}$ " ,  $\frac{1}{2}$ " ,  $\frac{3}{4}$ " ,  
1" ,  $1\frac{1}{2}$ " , 2"  
 $2\frac{1}{2}$ " , 3"



REFER TO SHEET "CI-INFO" FOR ADDITIONAL INFORMATION REGARDING THE  
APPLICATION OF SEALANTS, FASTENERS, AND CLOSURE MATERIALS.  
CONSULT METL-SPAN TO DETERMINE ALLOWABLE LOAD AND SPACING OF ATTACHMENT FASTENERS.



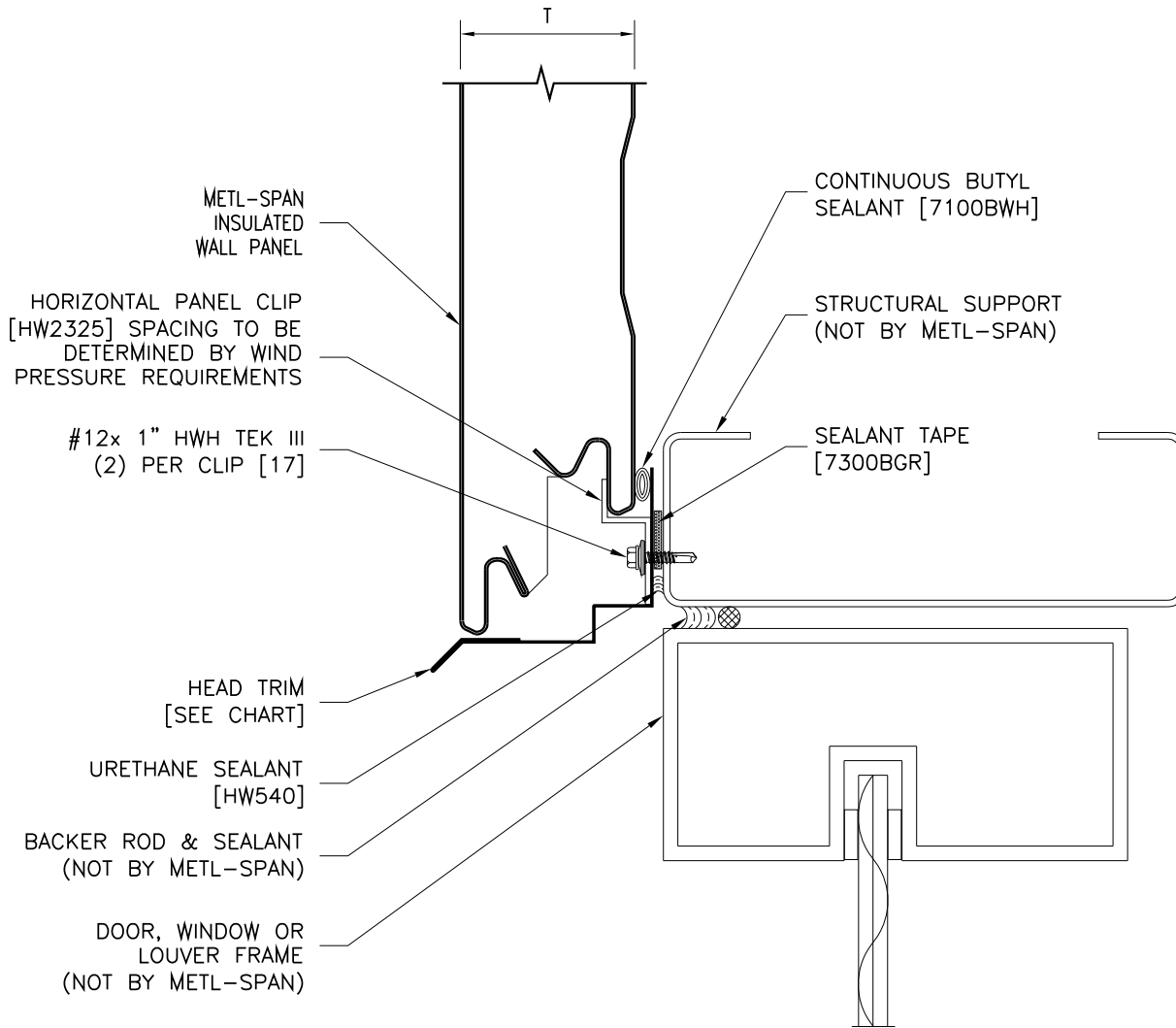
REFER TO SHEET "CI-CF-INFO" FOR ADDITIONAL INFORMATION REGARDING THE APPLICATION OF SEALANTS, FASTENERS, AND CLOSURE MATERIALS.  
CONSULT METL-SPAN TO DETERMINE ALLOWABLE LOAD AND SPACING OF ATTACHMENT FASTENERS..

T	TYPE 3 CLIP FASTENER	TYPE 5 CLIP FASTENER	TYPE B CLIP FASTENER
2"	1616PNC	1724PNC	1816PNC
2.5"	1624PNC	1732PNC	1824PNC
3"	1624PNC	1732PNC	1824PNC
4"	1632PNC	1740PNC	1832PNC

COMMERCIAL AND  
INDUSTRIAL

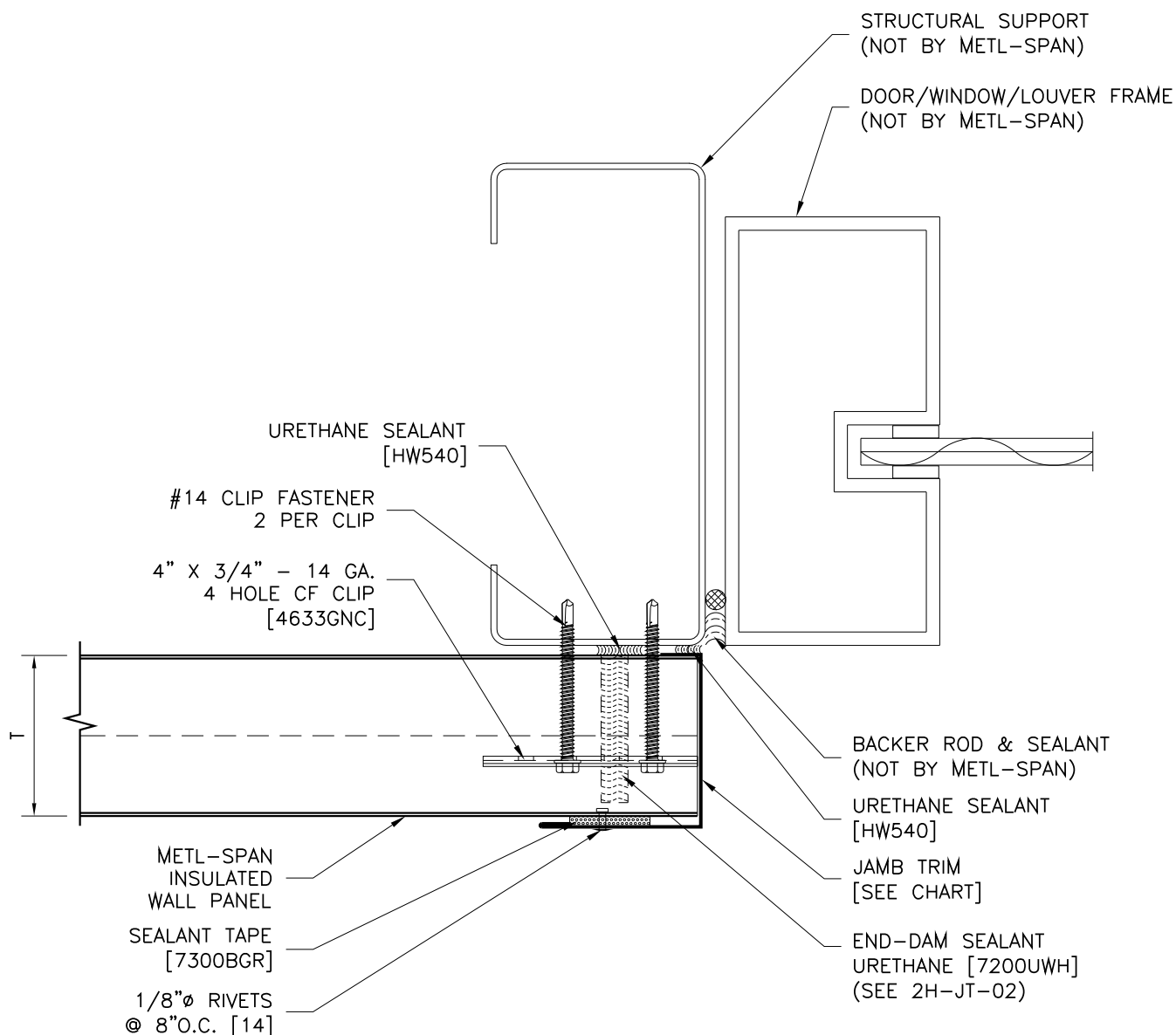
VERTICAL JOINT ATTACHMENT  
DETAIL w/ GASKET  
HORIZONTAL INSTALLATION

2H-VJ-01  
DATE: Sept. 30, 2016



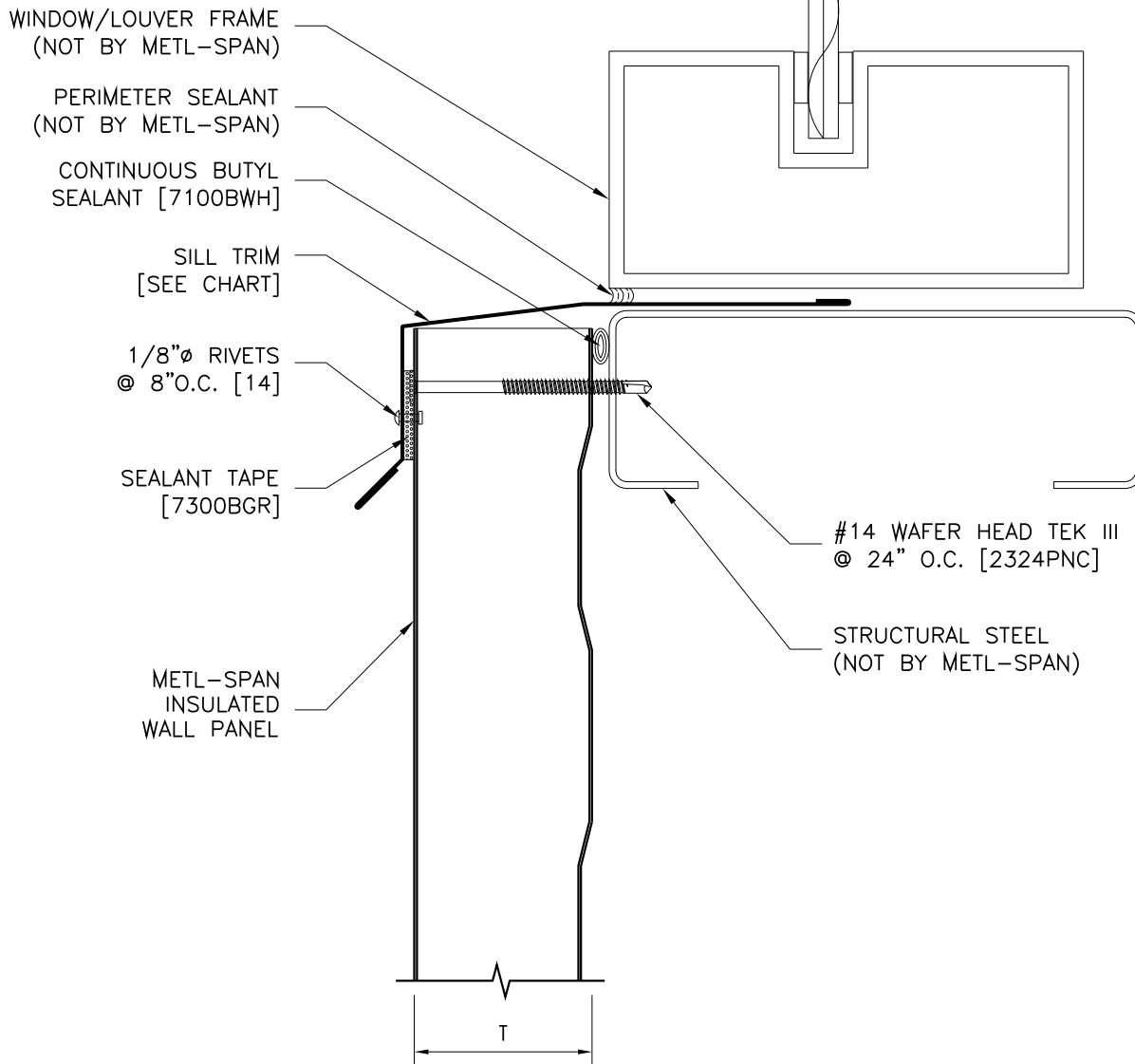
REFER TO SHEET "CI-INFO" FOR ADDITIONAL INFORMATION REGARDING THE APPLICATION OF SEALANTS, FASTENERS, AND CLOSURE MATERIALS. CONSULT METL-SPAN TO DETERMINE ALLOWABLE LOAD AND SPACING OF ATTACHMENT FASTENERS.

T	BASE FLASHING	TEK III CLIP FASTENER	TEK V CLIP FASTENER	TYPE B CLIP FASTENER
2"	F5003	1616PNC	1724PNC	1816PNC
2.5"	F5015	1624PNC	1732PNC	1824PNC
2.75"	F5070	1624PNC	1732PNC	1824PNC
3"	F5033	1624PNC	1732PNC	1824PNC
4"	F5051	1632PNC	1740PNC	1832PNC
COMMERCIAL AND INDUSTRIAL		HORIZONTAL HEAD DETAIL WITH DRIP TRIM		2H-WH-01 DATE: March 23, 2015



REFER TO SHEET "CI-INFO" FOR ADDITIONAL INFORMATION REGARDING THE APPLICATION OF SEALANTS, FASTENERS, AND CLOSURE MATERIALS.  
CONSULT METL-SPAN TO DETERMINE ALLOWABLE LOAD AND SPACING OF ATTACHMENT FASTENERS.

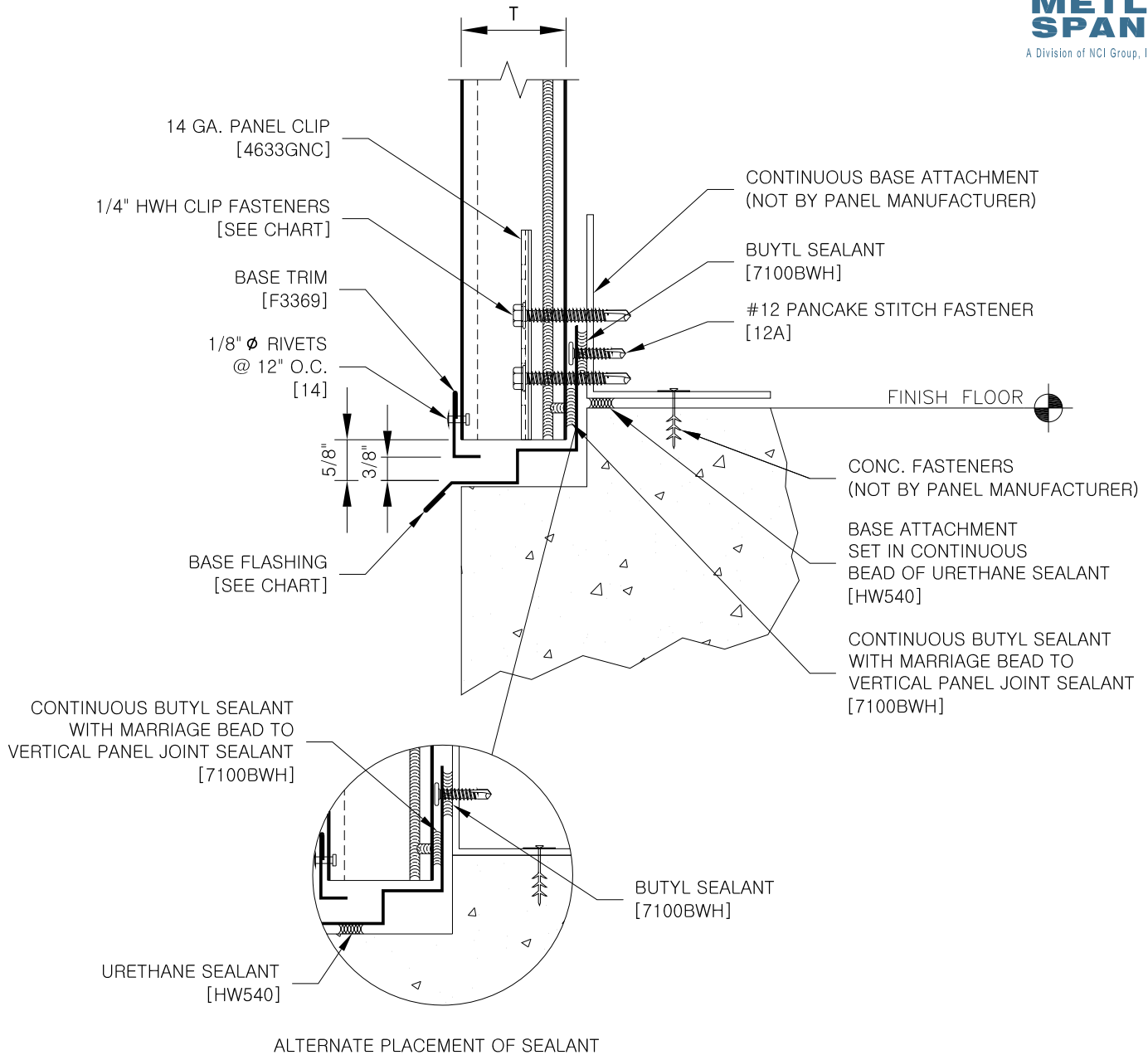
T	BASE FLASHING	TEK III CLIP FASTENER	TEK V CLIP FASTENER	TYPE B CLIP FASTENER
2"	F5401	1616PNC	1724PNC	1816PNC
2.5"	F5403	1624PNC	1732PNC	1824PNC
2.75"	F5405	1624PNC	1732PNC	1824PNC
3"	F5407	1624PNC	1732PNC	1824PNC
4"	F5409	1632PNC	1740PNC	1832PNC
COMMERCIAL AND INDUSTRIAL		HORIZONTAL JAMB DETAIL		2H-WJ-01 DATE: March 23, 2015



REFER TO SHEET "CI-INFO" FOR ADDITIONAL INFORMATION REGARDING THE APPLICATION OF SEALANTS, FASTENERS, AND CLOSURE MATERIALS.  
CONSULT METL-SPAN TO DETERMINE ALLOWABLE LOAD AND SPACING OF ATTACHMENT FASTENERS.

T	SILL TRIM	TEK III THROUGH FASTENER
2"	F5501	1424PNC
2.5"	F5503	1432PNC
2.75"	F5505	1432PNC
3"	F5507	1432PNC
4"	F5509	1440PNC

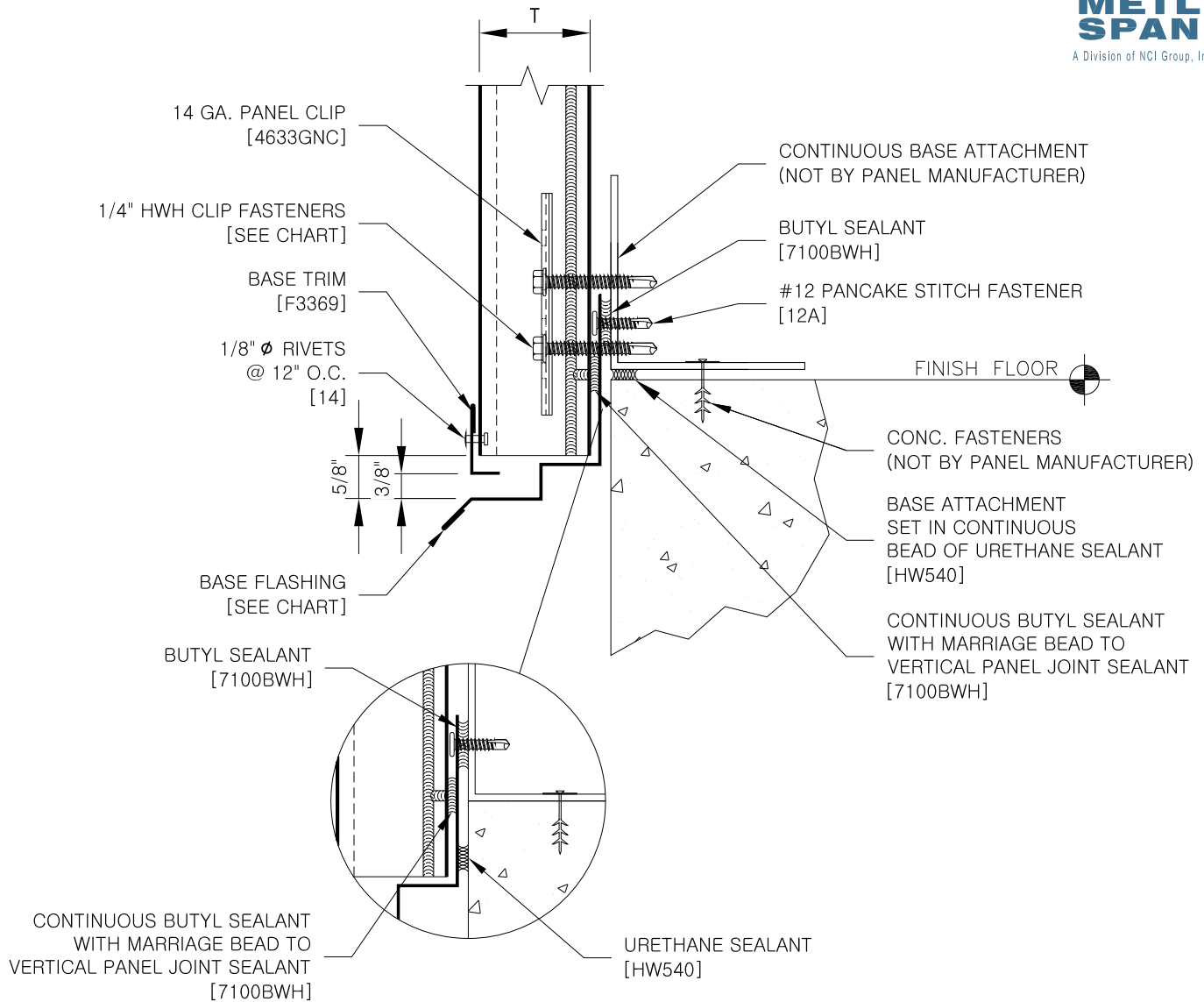
COMMERCIAL AND INDUSTRIAL	SILL DETAIL WITH TRIM	2H-WS-01 DATE: March 19, 2015
---------------------------	-----------------------	----------------------------------



REFER TO SHEET "CI-CF-INFO" FOR ADDITIONAL INFORMATION REGARDING THE APPLICATION OF SEALANTS, FASTENERS, AND CLOSURE MATERIALS.  
CONSULT METL-SPAN TO DETERMINE ALLOWABLE LOAD AND SPACING OF ATTACHMENT FASTENERS.

T	BASE FLASHING	TYPE 3 CLIP FASTENER	TYPE 5 CLIP FASTENER	TYPE B CLIP FASTENER
2"	F5001	1616PNC	1724PNC	1816PNC
2.5"	F5013	1624PNC	1732PNC	1824PNC
2.75"	F5071	1624PNC	1732PNC	1824PNC
3"	F5034	1624PNC	1732PNC	1824PNC
4"	F5050	1632PNC	1740PNC	1832PNC
COMMERCIAL & INDUSTRIAL		BASE - OVERHANG W/ NOTCHED SLAB		CI-CF-BE-02 DATE: 12-16-2015

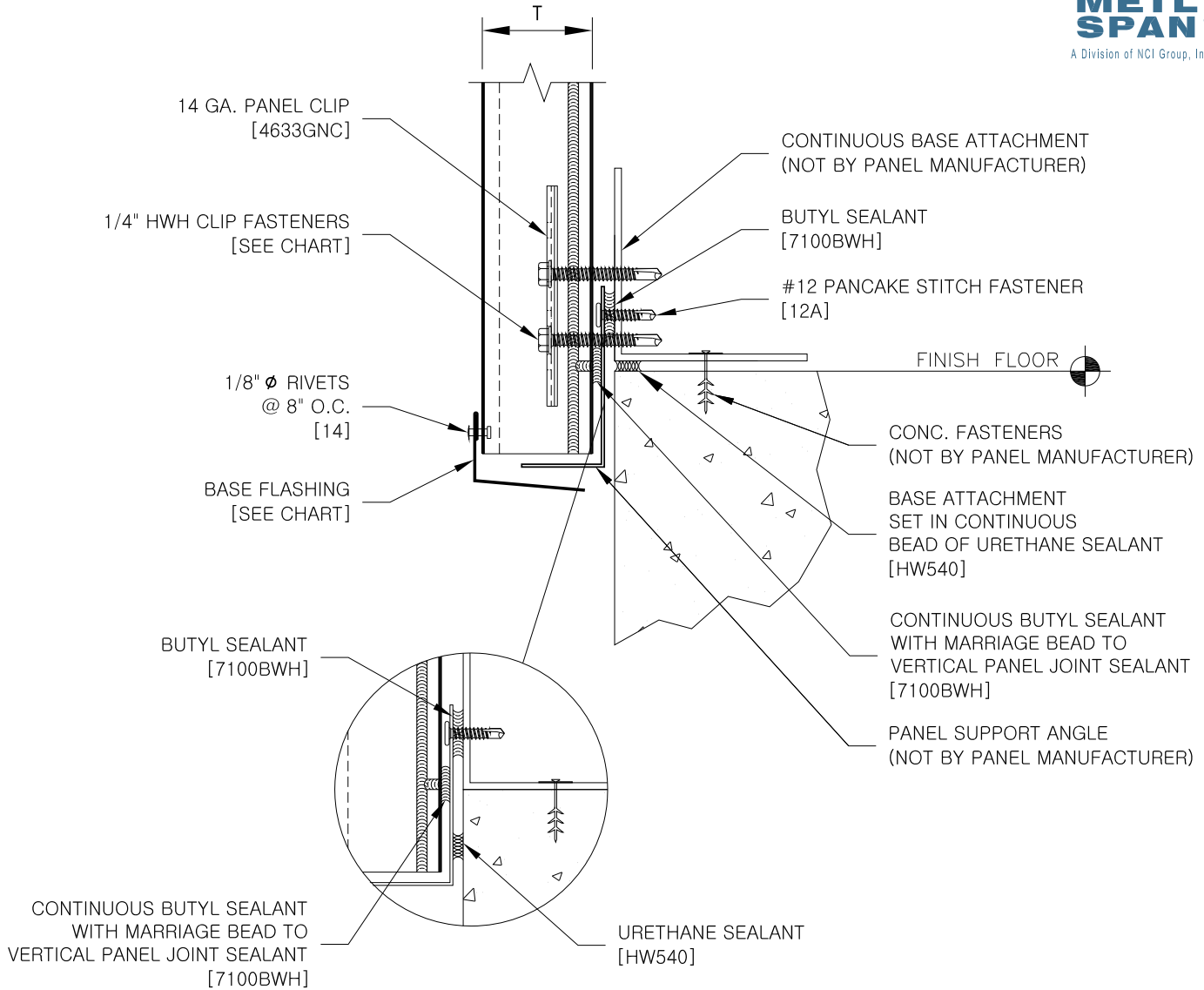




ALTERNATE PLACEMENT OF SEALANT

REFER TO SHEET "CI-CF-INFO" FOR ADDITIONAL INFORMATION REGARDING THE APPLICATION OF SEALANTS, FASTENERS, AND CLOSURE MATERIALS.  
CONSULT METL-SPAN TO DETERMINE ALLOWABLE LOAD AND SPACING OF ATTACHMENT FASTENERS.

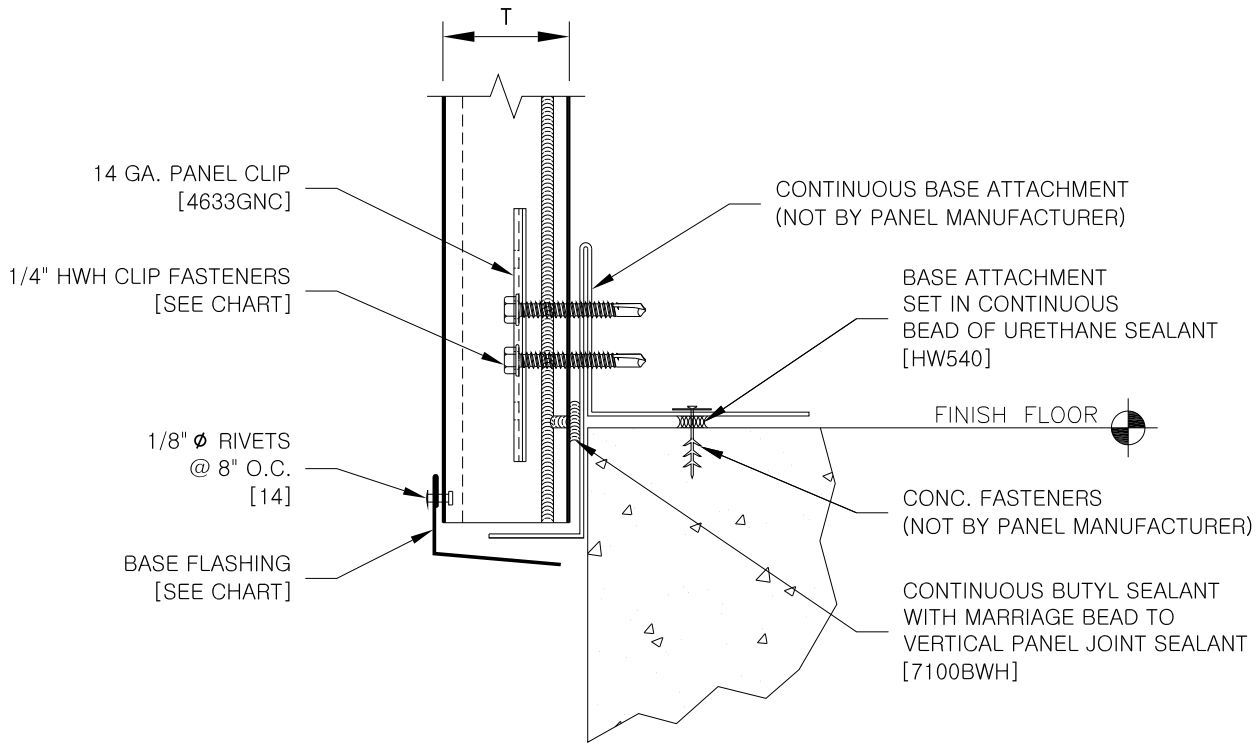
T	BASE FLASHING	TYPE 3 CLIP FASTENER	TYPE 5 CLIP FASTENER	TYPE B CLIP FASTENER
2"	F5001	1616PNC	1724PNC	1816PNC
2.5"	F5013	1624PNC	1732PNC	1824PNC
2.75"	F5071	1624PNC	1732PNC	1824PNC
3"	F5034	1624PNC	1732PNC	1824PNC
4"	F5050	1632PNC	1740PNC	1832PNC
COMMERCIAL & INDUSTRIAL		BASE - OVERHANG W/ DRIP TRIM		CI-CF-BE-06 DATE: 12-16-2015



ALTERNATE PLACEMENT OF SEALANT

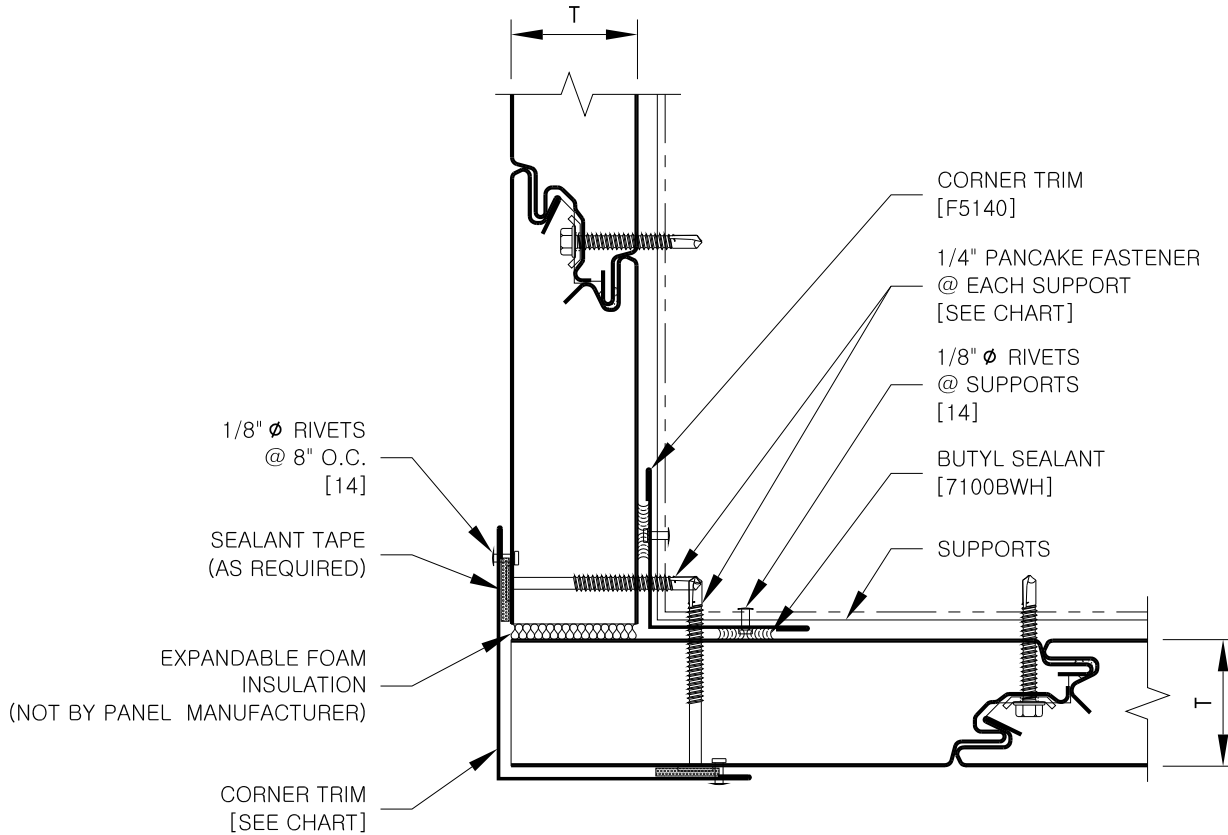
REFER TO SHEET "CI-CF-INFO" FOR ADDITIONAL INFORMATION REGARDING THE APPLICATION OF SEALANTS, FASTENERS, AND CLOSURE MATERIALS.  
CONSULT METL-SPAN TO DETERMINE ALLOWABLE LOAD AND SPACING OF ATTACHMENT FASTENERS.

T	BASE FLASHING	TYPE 3 CLIP FASTENER	TYPE 5 CLIP FASTENER	TYPE B CLIP FASTENER
2"	F5076	1616PNC	1724PNC	1816PNC
2.5"	F5077	1624PNC	1732PNC	1824PNC
2.75"	F5078	1624PNC	1732PNC	1824PNC
3"	F5079	1624PNC	1732PNC	1824PNC
4"	F5080	1632PNC	1740PNC	1832PNC
COMMERCIAL & INDUSTRIAL		BASE - OVERHANG W/ EDGE TRIM		CI-CF-BE-07 DATE: 01-14-2016



REFER TO SHEET "CI-CF-INFO" FOR ADDITIONAL INFORMATION REGARDING THE APPLICATION OF SEALANTS, FASTENERS, AND CLOSURE MATERIALS.  
CONSULT METL-SPAN TO DETERMINE ALLOWABLE LOAD AND SPACING OF ATTACHMENT FASTENERS.

T	BASE FLASHING	TYPE 3 CLIP FASTENER	TYPE 5 CLIP FASTENER	TYPE B CLIP FASTENER
2"	F5076	1616PNC	1724PNC	1816PNC
2.5"	F5077	1624PNC	1732PNC	1824PNC
2.75"	F5078	1624PNC	1732PNC	1824PNC
3"	F5079	1624PNC	1732PNC	1824PNC
4"	F5080	1632PNC	1740PNC	1832PNC
COMMERCIAL & INDUSTRIAL		BASE - OVERHANG W/ BASE SUPPORT		CI-CF-BE-08 DATE: 2-25-2016



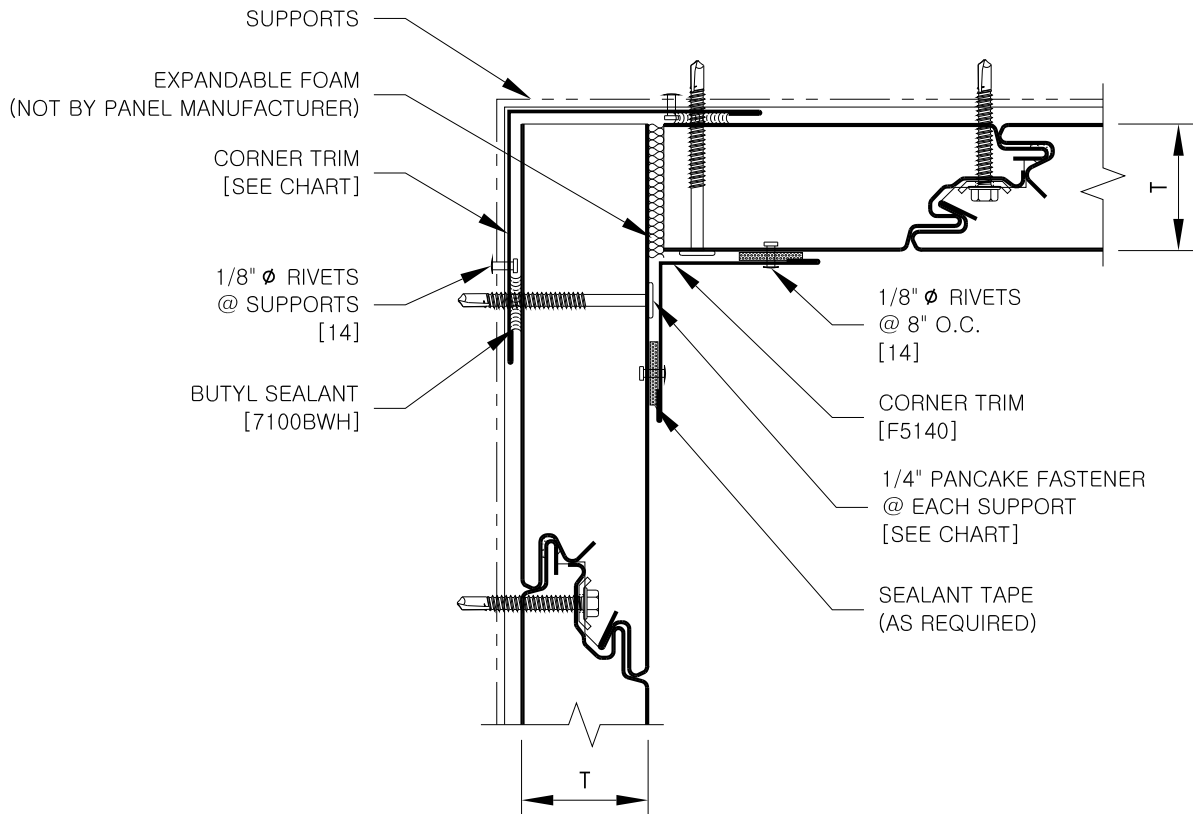
REFER TO SHEET "CI-CF-INFO" FOR ADDITIONAL INFORMATION REGARDING THE APPLICATION OF SEALANTS, FASTENERS, AND CLOSURE MATERIALS.  
CONSULT METL-SPAN TO DETERMINE ALLOWABLE LOAD AND SPACING OF ATTACHMENT FASTENERS.

T	CORNER TRIM	PANCAKE HEAD TYPE 3
2"	F5102	1424PNC
2.5"	F5103	1432PNC
2.75"	F5105	1432PNC
3"	F5104	1432PNC
4"	F5101	1440PNC

COMMERCIAL &  
INDUSTRIAL

OUTSIDE CORNER  
W/ FLUSH TRIM

CI-CF-CE-01  
DATE: 12-16-2015



REFER TO SHEET "CI-CF-INFO" FOR ADDITIONAL INFORMATION REGARDING THE APPLICATION OF SEALANTS, FASTENERS, AND CLOSURE MATERIALS.  
CONSULT METL-SPAN TO DETERMINE ALLOWABLE LOAD AND SPACING OF ATTACHMENT FASTENERS.

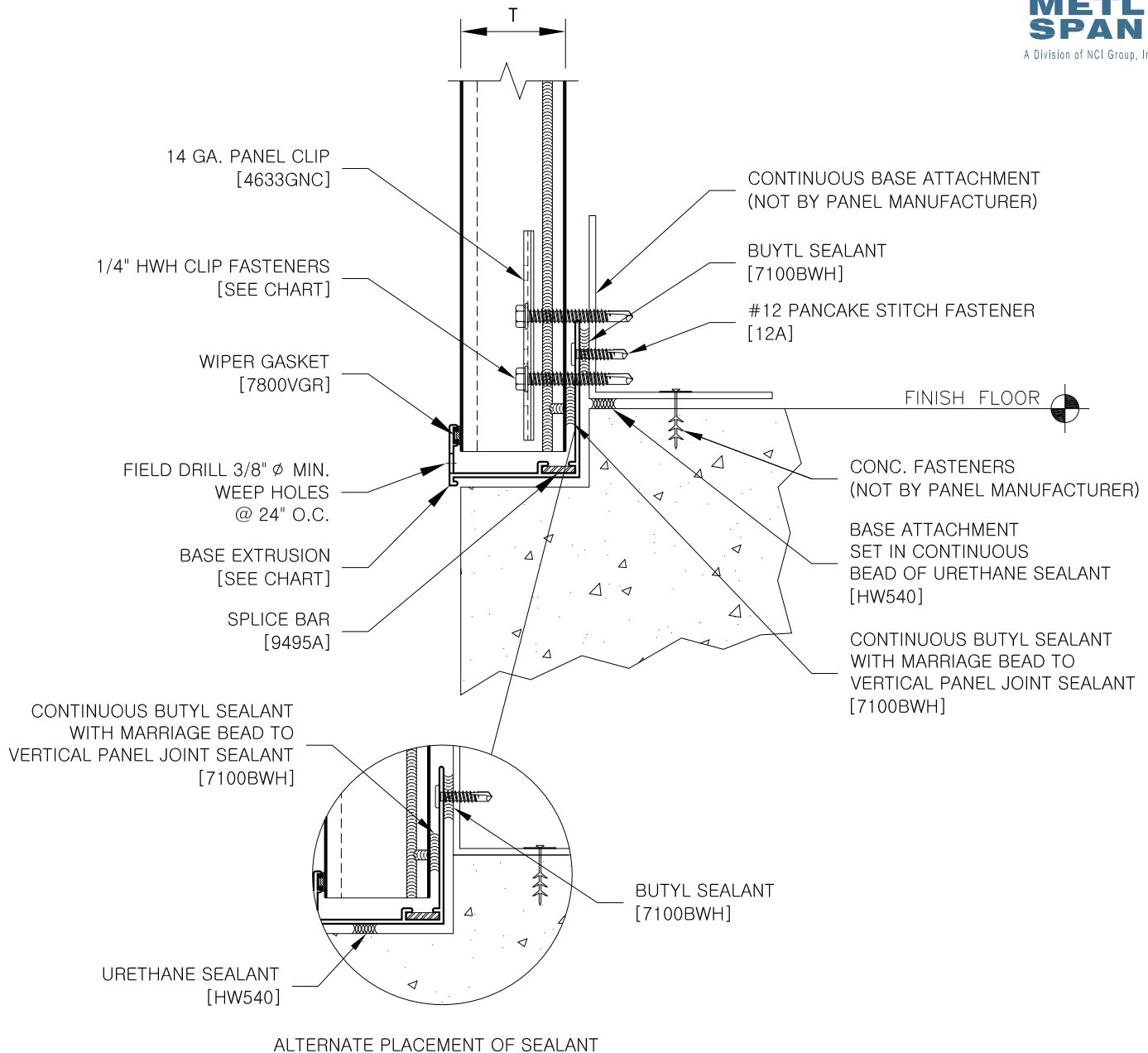
T	CORNER TRIM	PANCAKE HEAD TYPE 3
2"	F5102	1424PNC
2.5"	F5103	1432PNC
2.75"	F5105	1432PNC
3"	F5104	1432PNC
4"	F5101	1440PNC

COMMERCIAL &  
INDUSTRIAL

INSIDE CORNER  
W/ FLUSH TRIM

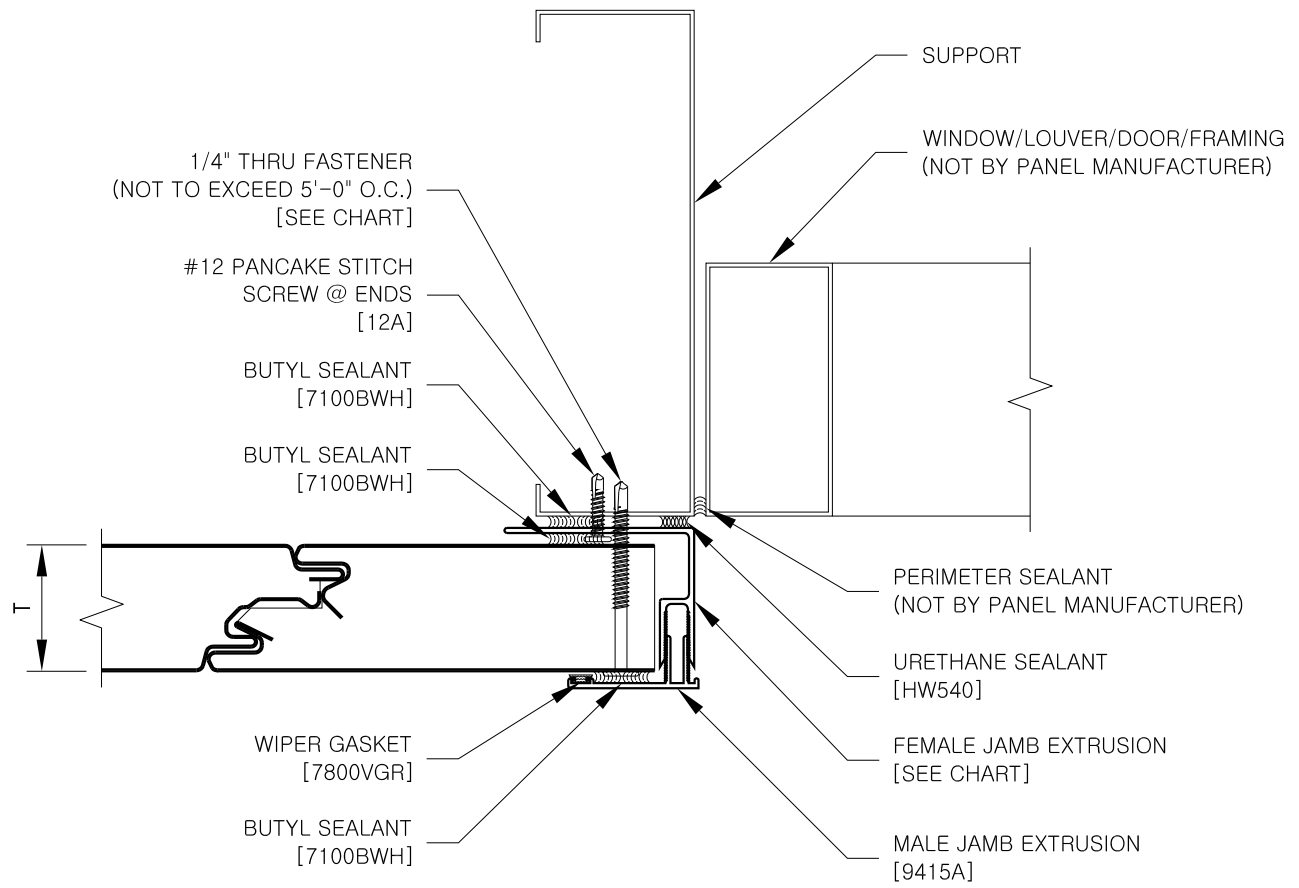
CI-CF-CE-03

DATE: 12-16-2015



REFER TO SHEET "CI-CF-INFO" FOR ADDITIONAL INFORMATION REGARDING THE APPLICATION OF SEALANTS, FASTENERS, AND CLOSURE MATERIALS.  
CONSULT METL-SPAN TO DETERMINE ALLOWABLE LOAD AND SPACING OF ATTACHMENT FASTENERS.

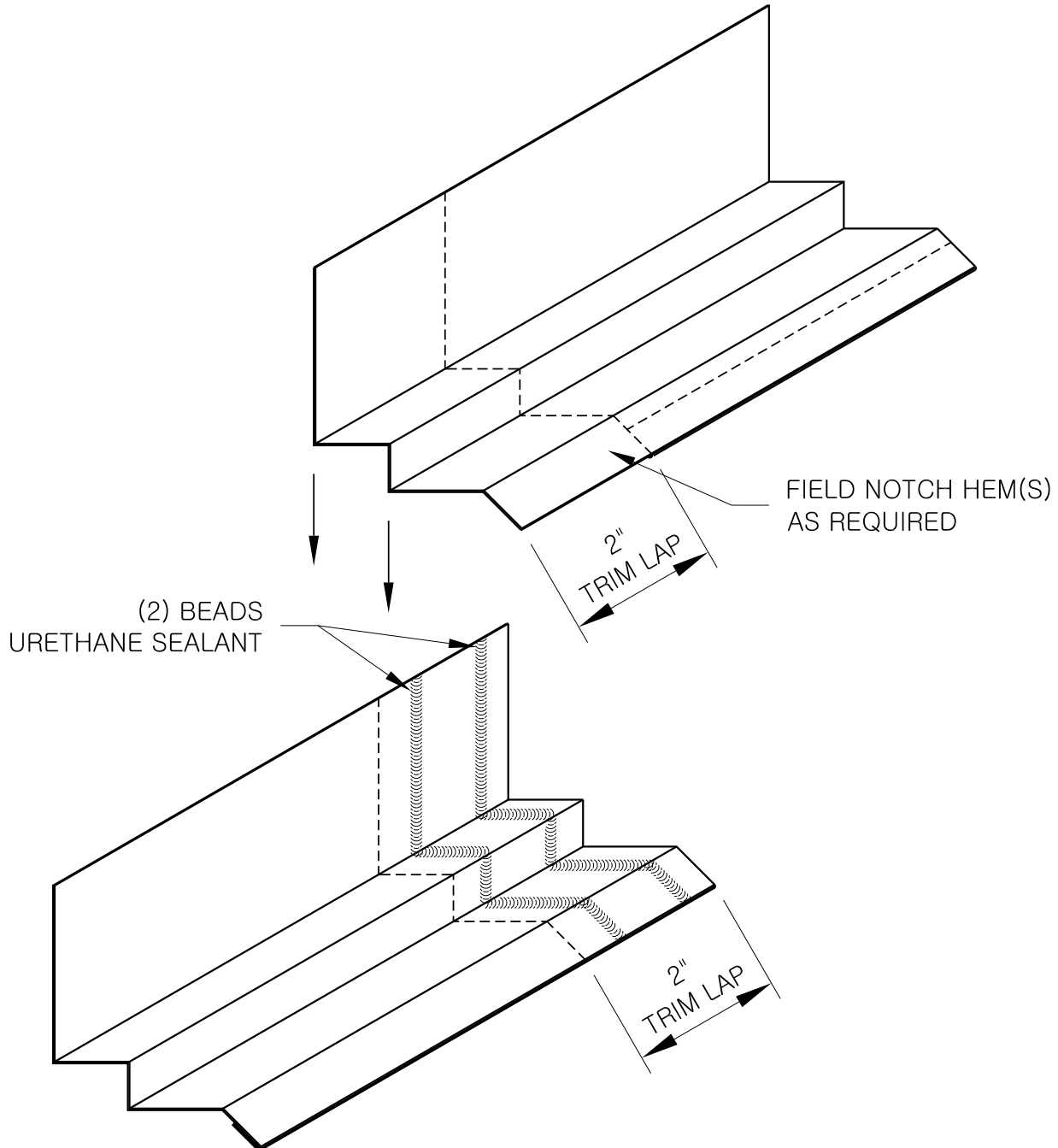
T	BASE EXTRUSION	TYPE 3 CLIP FASTENER	TYPE 5 CLIP FASTENER	TYPE B CLIP FASTENER
2"	9405A	1616PNC	1724PNC	1816PNC
2.5"	9406A	1624PNC	1732PNC	1824PNC
3"	9407A	1624PNC	1732PNC	1824PNC
4"	9404A	1632PNC	1740PNC	1832PNC
COMMERCIAL & INDUSTRIAL		BASE - OVERHANG W/ NOTCHED SLAB, EXTRUSION		CI-CF-EB-01 DATE: 12-16-2015



REFER TO SHEET "CI-CF-INFO" FOR ADDITIONAL INFORMATION REGARDING THE APPLICATION OF SEALANTS, FASTENERS, AND CLOSURE MATERIALS. CONSULT METL-SPAN TO DETERMINE ALLOWABLE LOAD AND SPACING OF ATTACHMENT FASTENERS.

T	FEMALE JAMB EXTRUSION	TYPE 3 THRU FASTENER	TEK 5 THRU FASTENER	TYPE B THRU FASTENER
2"	9420A	1424PNC	1732PNC	1824PNC
2.5"	9421A	1432PNC	1740PNC	1832PNC
3"	9422A	1432PNC	1740PNC	1832PNC
4"	9423A	1440PNC	1748PNC	1832PNC

COMMERCIAL & INDUSTRIAL	JAMB W/ EXTRUSION	CI-CF-EJ-01 DATE: 12-16-2015
-------------------------	-------------------	---------------------------------



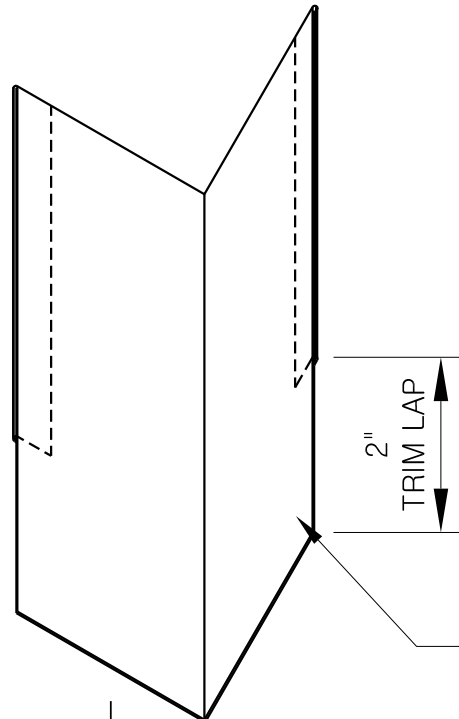
NOTE: POP RIVET OR STITCH  
SCREW AS NECESSARY

COMMERCIAL &  
INDUSTRIAL

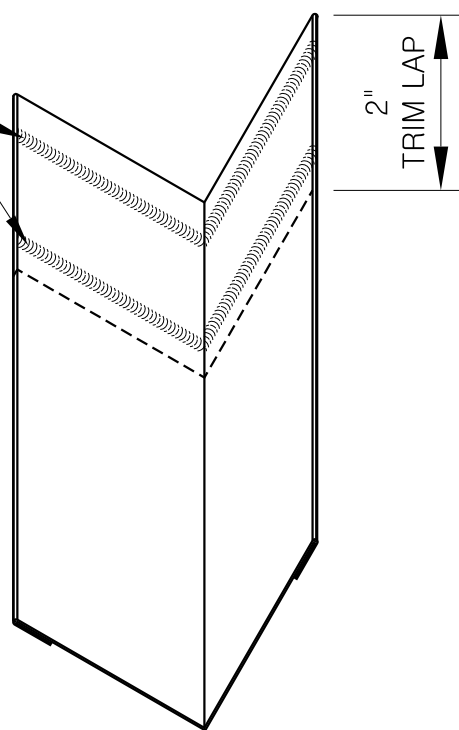
TRIM END LAP -  
BASE

CI-CF-EL-B  
DATE: 12-16-2015

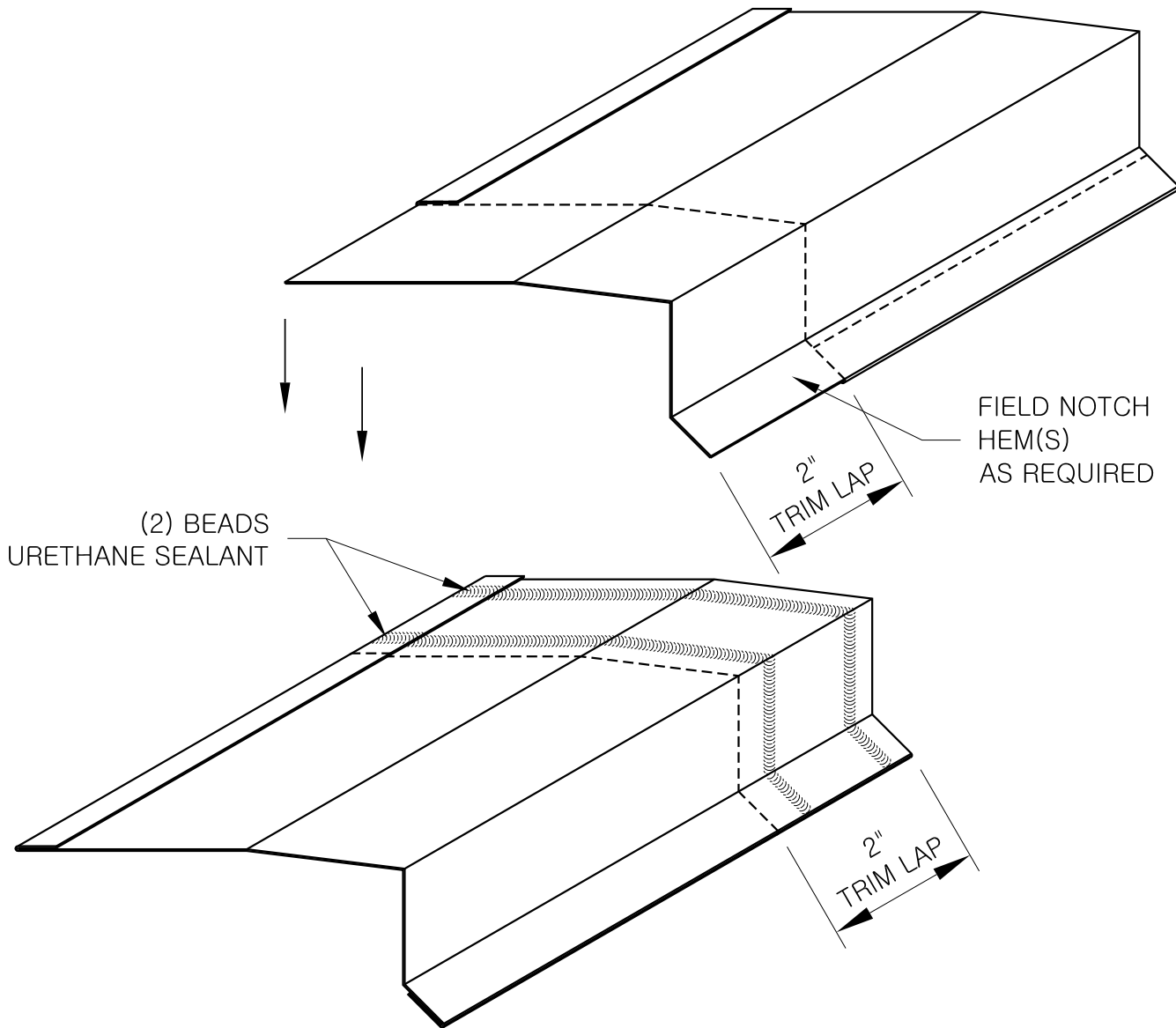




(2) BEADS  
URETHANE SEALANT



NOTE: POP RIVET OR STITCH  
SCREW AS NECESSARY

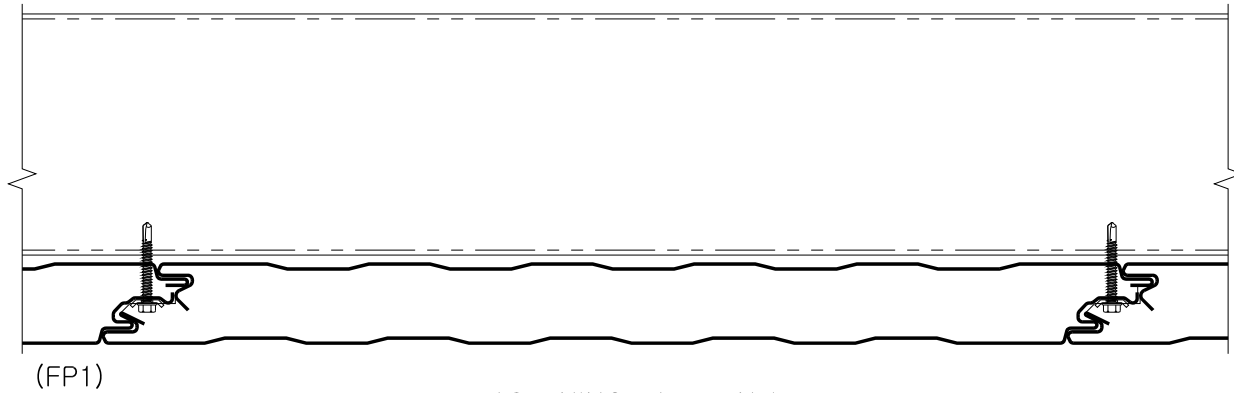


NOTE: POP RIVET OR STITCH  
SCREW AS NECESSARY

COMMERCIAL &  
INDUSTRIAL

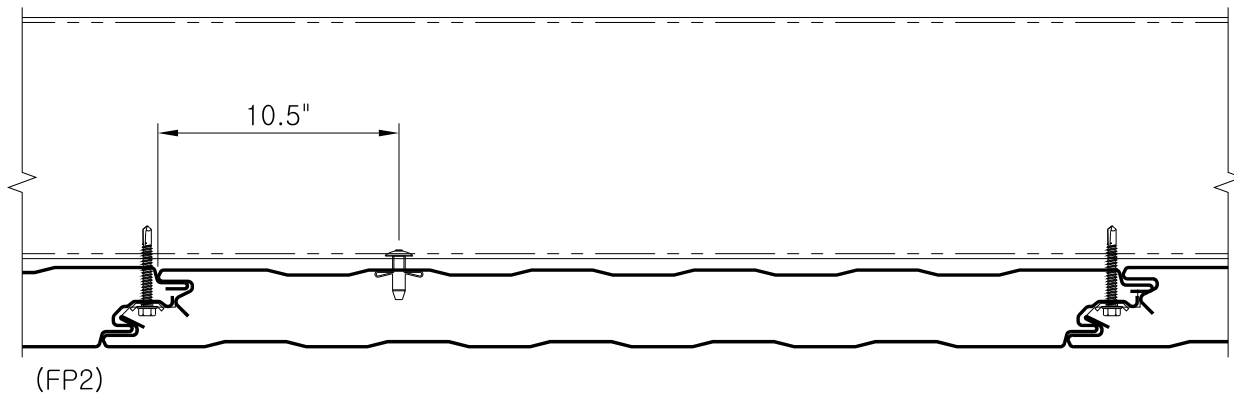
TRIM END LAP -  
SILL

CI-CF-EL-S  
DATE: 12-16-2015



FASTENING PATTERN 1  
SIDE JOINT FASTENING

DIMENSION IS FROM  
FEMALE EDGE +/- 1.5"

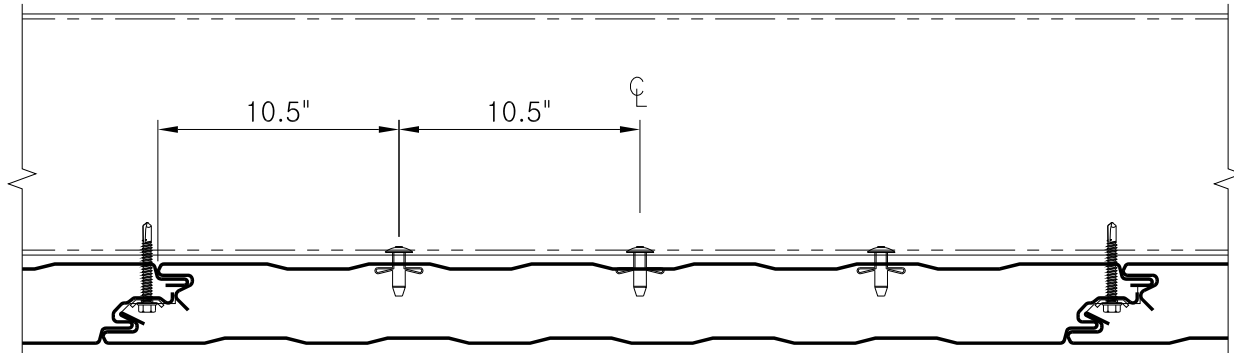


FASTENING PATTERN 2  
SIDE JOINT FASTENING  
AND ONE DOME HEAD  
BULB-TITE<sup>®</sup> RIVET

INSTALL RIVET THROUGH GIRT FLANGE  
INTO MESA WHERE THE SKIN MAKES  
CONTACT WITH THE STEEL

(CONSULT FACTORY FOR FASTENER REQUIREMENTS NEEDED TO MEET SPECIFIC LOAD REQUIREMENTS)

DIMENSION IS FROM  
FEMALE EDGE +/- 1.5"

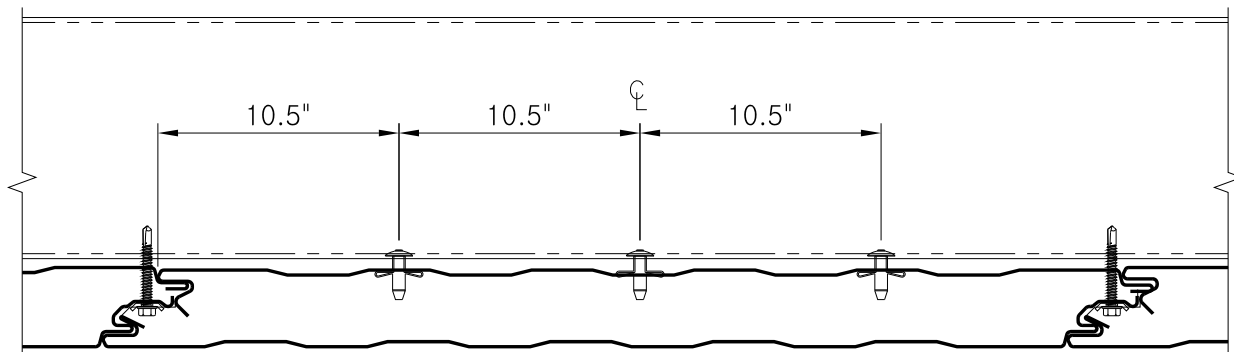


(FP3)

FASTENING PATTERN 3  
SIDE JOINT FASTENING  
AND TWO DOME HEAD  
BULB-TITE<sup>®</sup> RIVETS

INSTALL RIVET THROUGH GIRT FLANGE  
INTO MESA WHERE THE SKIN MAKES  
CONTACT WITH THE STEEL

DIMENSION IS FROM  
FEMALE EDGE +/- 1.5"



(FP4)

FASTENING PATTERN 4  
SIDE JOINT FASTENING  
WITH THREE DOME HEAD  
BULB-TITE<sup>®</sup> RIVETS

INSTALL RIVET THROUGH GIRT FLANGE  
INTO MESA WHERE THE SKIN MAKES  
CONTACT WITH THE STEEL

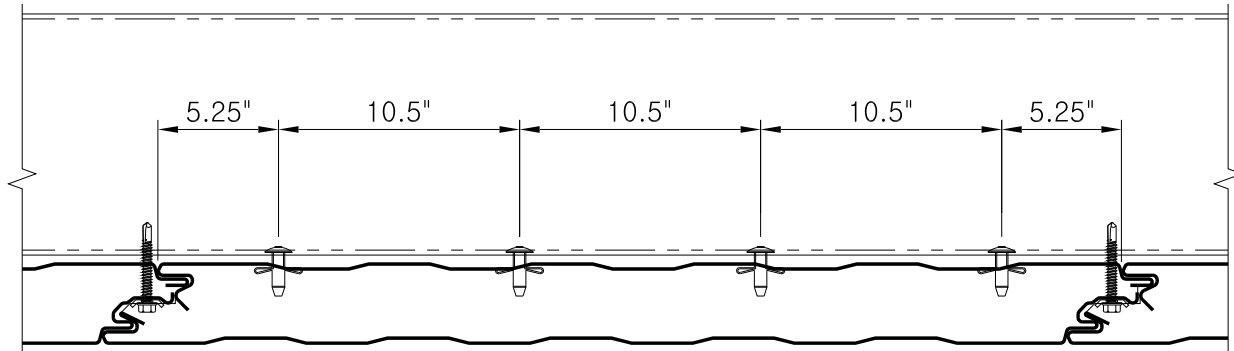
(CONSULT FACTORY FOR FASTENER REQUIREMENTS NEEDED TO MEET SPECIFIC LOAD REQUIREMENTS)

COMMERCIAL &  
INDUSTRIAL

FASTENING PATTERNS

CI-CF-FP 3-4  
DATE: 12-16-2015

DIMENSION IS FROM  
FEMALE EDGE +/- 1.5"

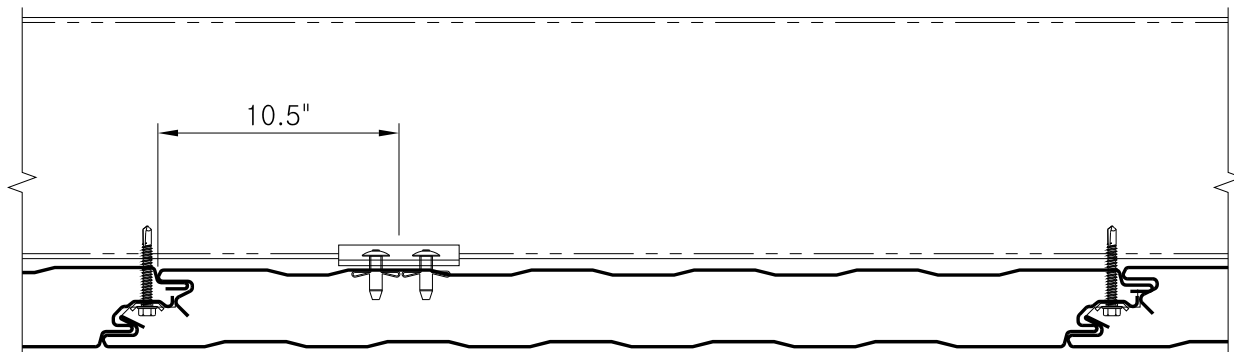


(FP5)

FASTENING PATTERN 5  
SIDE JOINT FASTENING  
AND BACK FASTENING WITH  
FOUR DOME HEAD BULB-TITE<sup>®</sup> RIVETS

INSTALL RIVET THROUGH GIRT FLANGE  
INTO MESA WHERE THE SKIN MAKES  
CONTACT WITH THE STEEL

DIMENSION IS FROM  
FEMALE EDGE +/- 1.5"

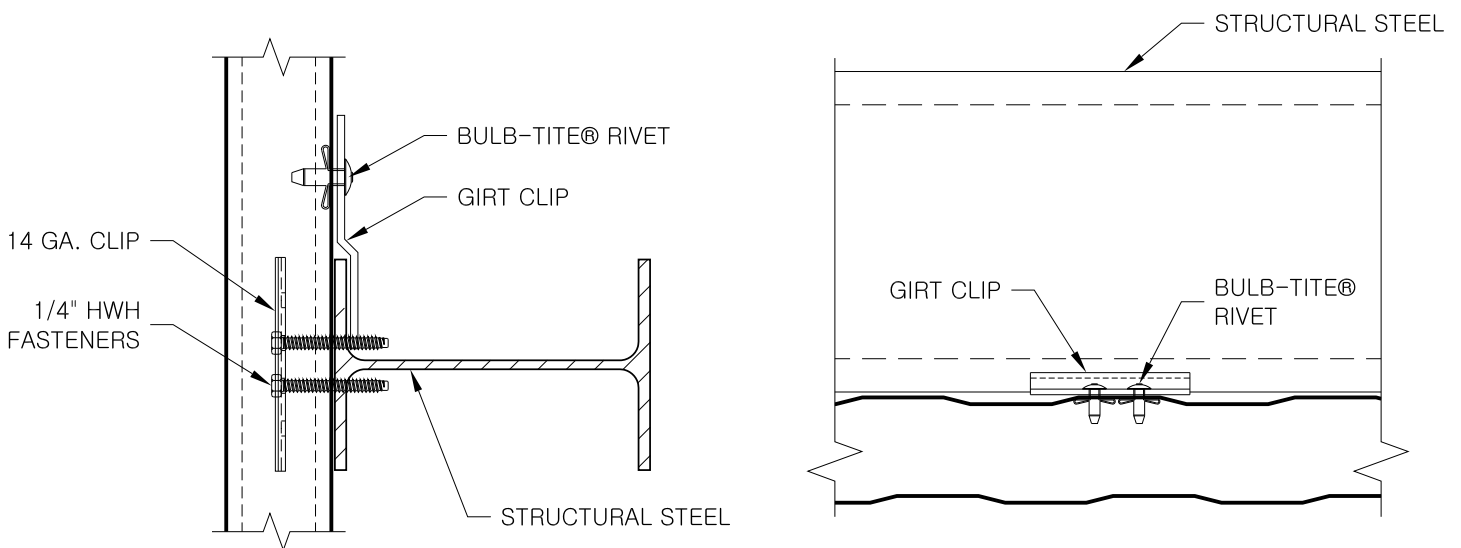
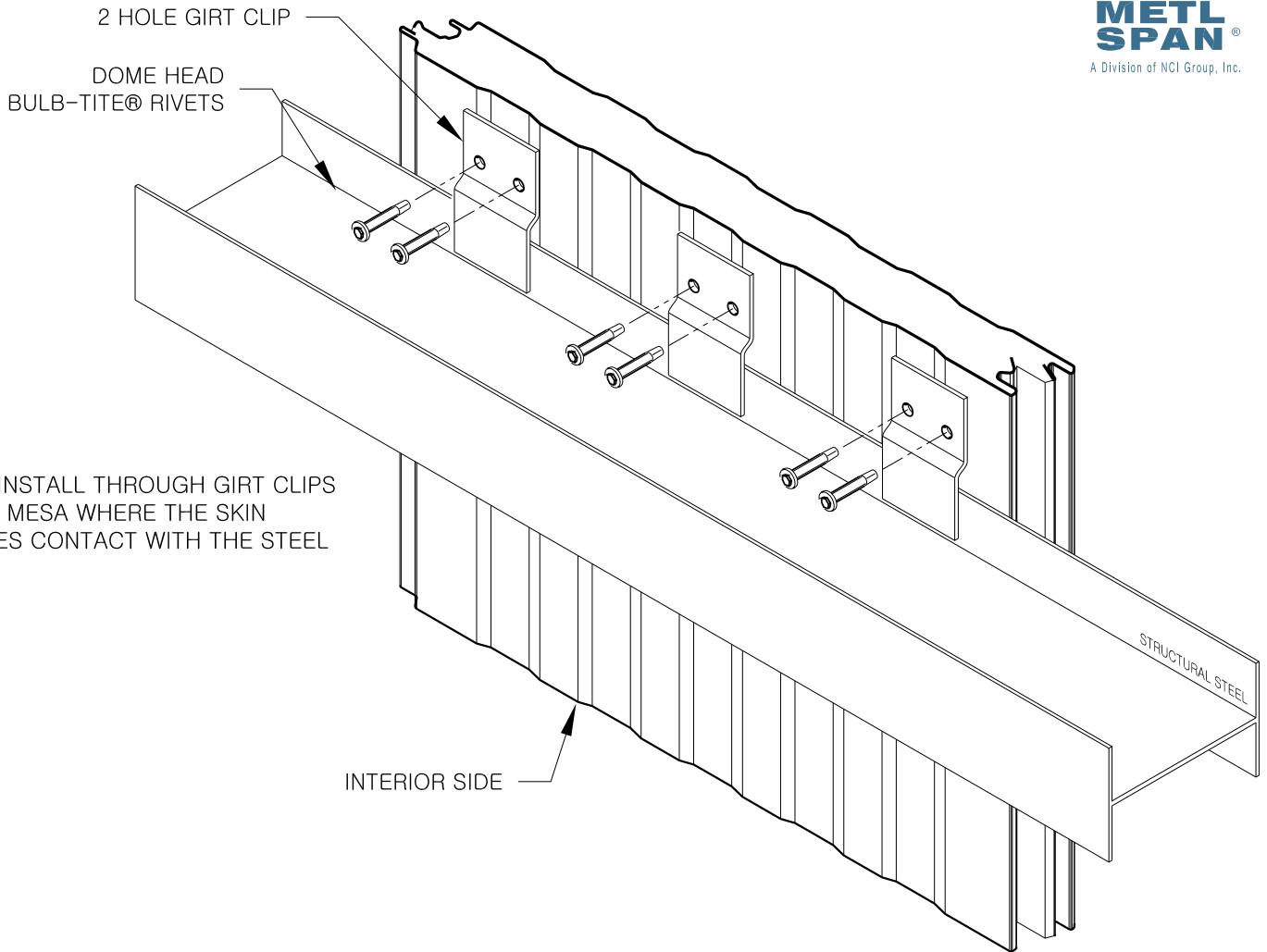


(FP6)

FASTENING PATTERN 6  
SIDE JOINT FASTENING  
AND ONE GIRT CLIP WITH TWO DOME HEAD  
BULB-TITE<sup>®</sup> RIVETS

INSTALL RIVET THROUGH GIRT FLANGE  
INTO MESA WHERE THE SKIN MAKES  
CONTACT WITH THE STEEL

(CONSULT FACTORY FOR FASTENER REQUIREMENTS NEEDED TO MEET SPECIFIC LOAD REQUIREMENTS)



DOME HEAD  
BULB-TITE<sup>®</sup> RIVETS

\* INSTALL THROUGH GIRT  
FLANGE INTO MESA WHERE THE  
SKIN MAKES CONTACT WITH STEEL

INTERIOR SIDE

WALL SUPPORT

14 GA. CLIP

1/4" HWH  
FASTENERS

BULB-TITE<sup>®</sup> RIVET

WALL SUPPORT

WALL SUPPORT

BULB-TITE<sup>®</sup> RIVET

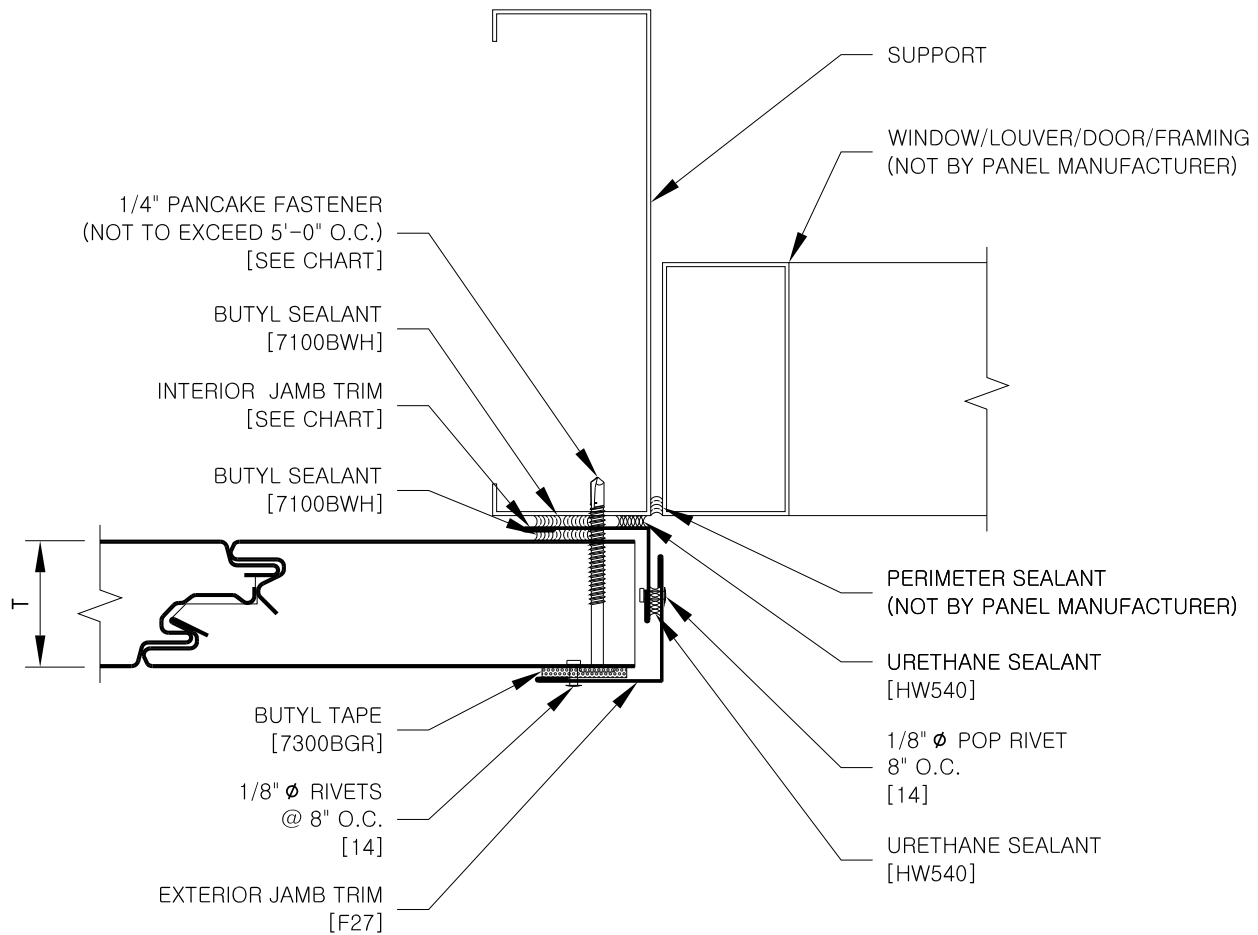
14 GA. CLIP  
W/FASTENERS

COMMERCIAL &  
INDUSTRIAL

ATTACHMENT – BACK FASTENED  
W/ RIVETS

CI-CF-FSTN-01D

DATE: 01-14-2016



REFER TO SHEET "CI-CF-INFO" FOR ADDITIONAL INFORMATION REGARDING THE APPLICATION OF SEALANTS, FASTENERS, AND CLOSURE MATERIALS.  
CONSULT METL-SPAN TO DETERMINE ALLOWABLE LOAD AND SPACING OF ATTACHMENT FASTENERS.

T	INTERIOR JAMB TRIM	PANCAKE HEAD TYPE 3
2"	F5442	1424PNC
2.5"	F5442	1432PNC
2.75"	F5442	1432PNC
3"	F5443	1432PNC
4"	FF443	1440PNC

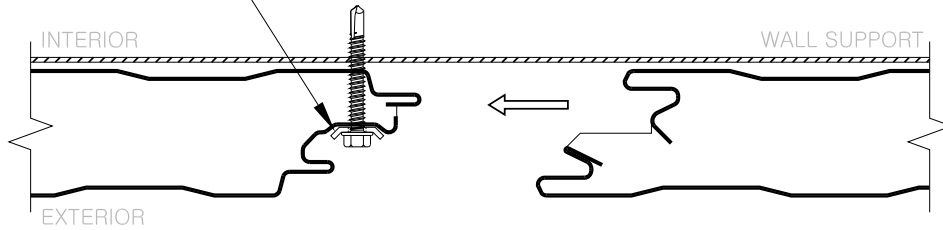
COMMERCIAL &  
INDUSTRIAL

JAMB W/ TWO PIECE TRIM

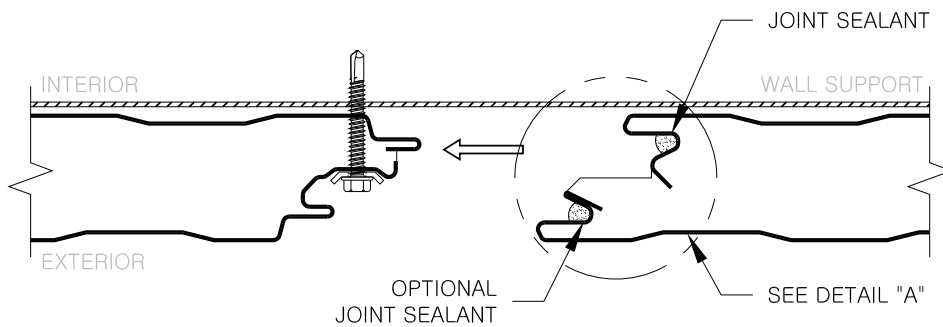
CI-CF-JB-01  
DATE: 01-14-2016



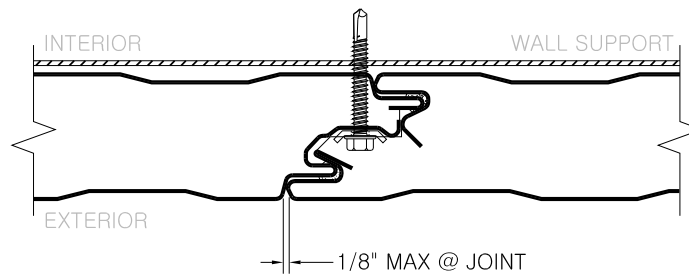
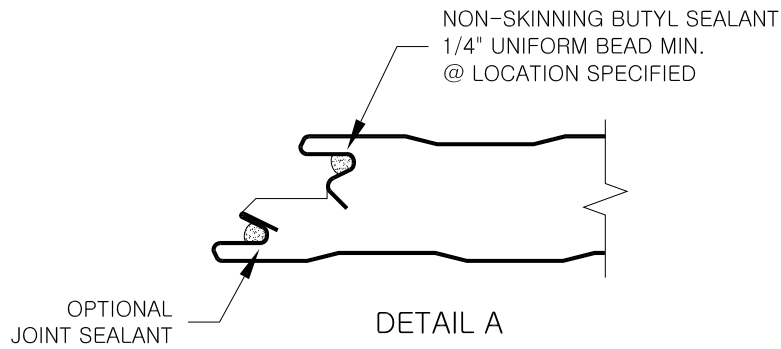
14 GA. PANEL CLIP  
W/ 1/4" HWH FASTENERS  
@ EACH WALL SUPPORT

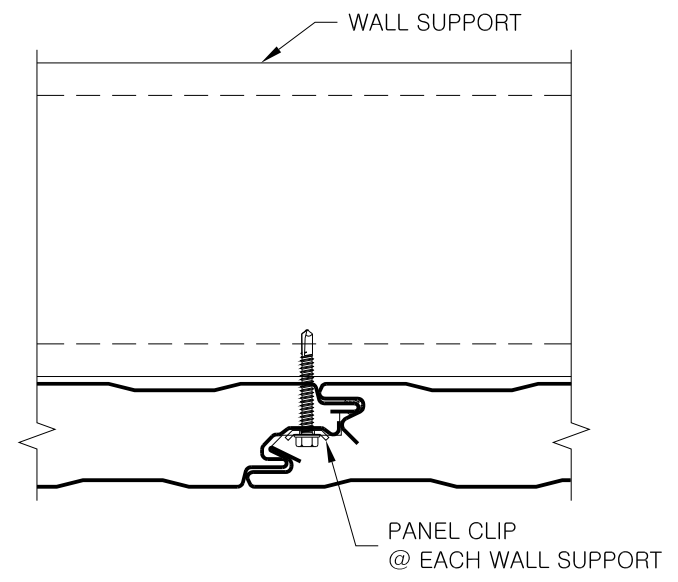
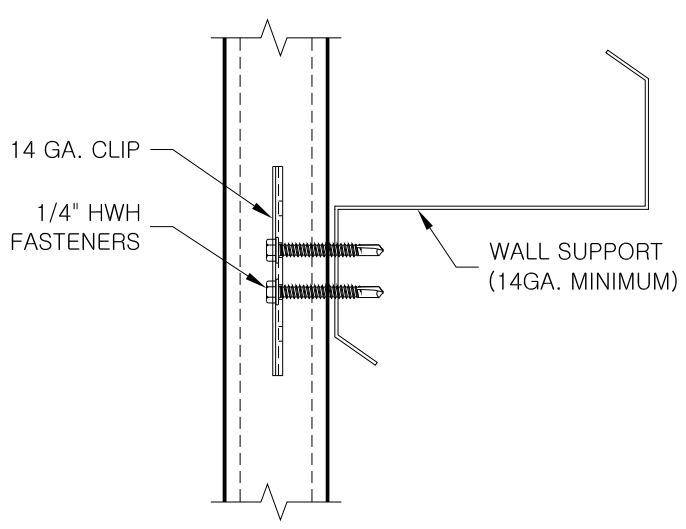
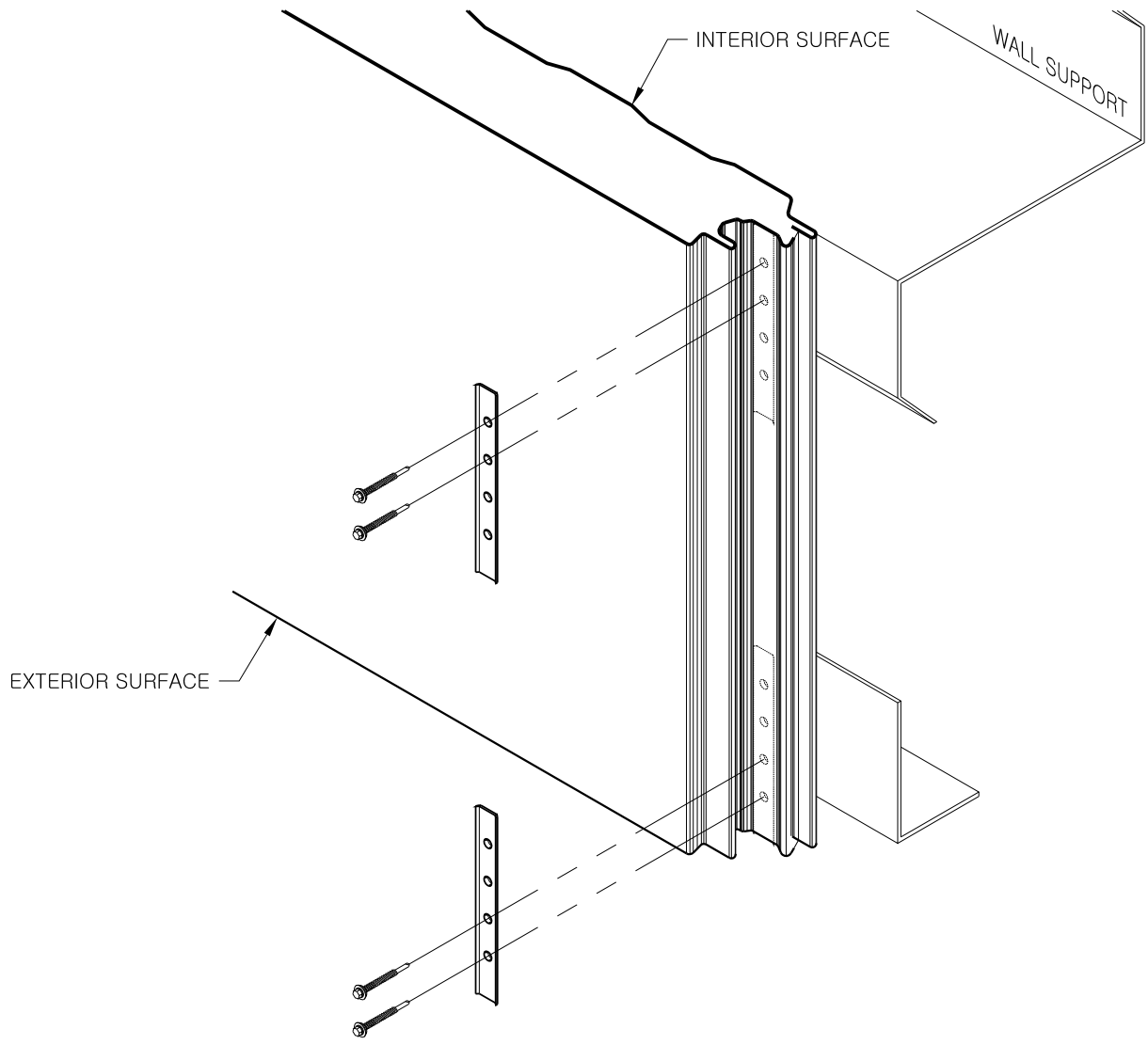


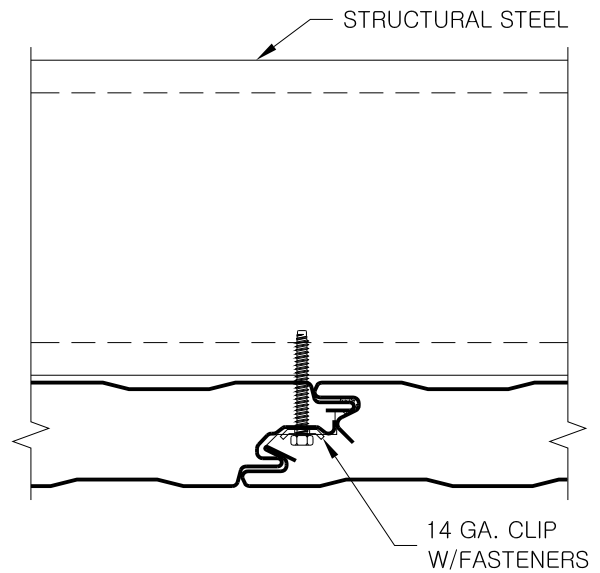
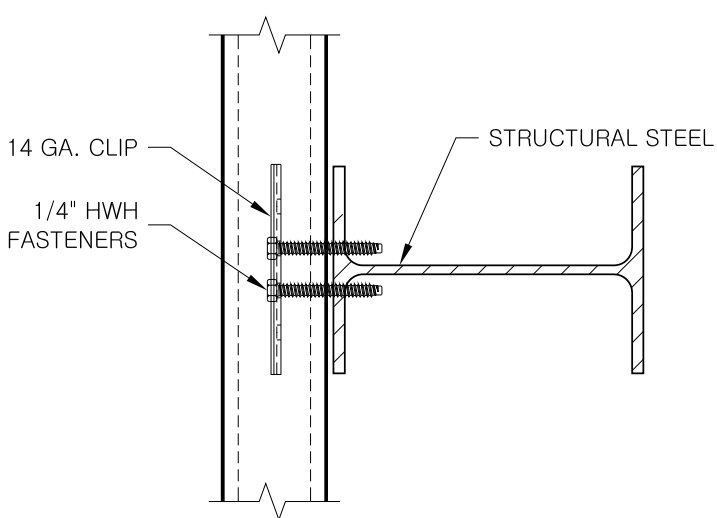
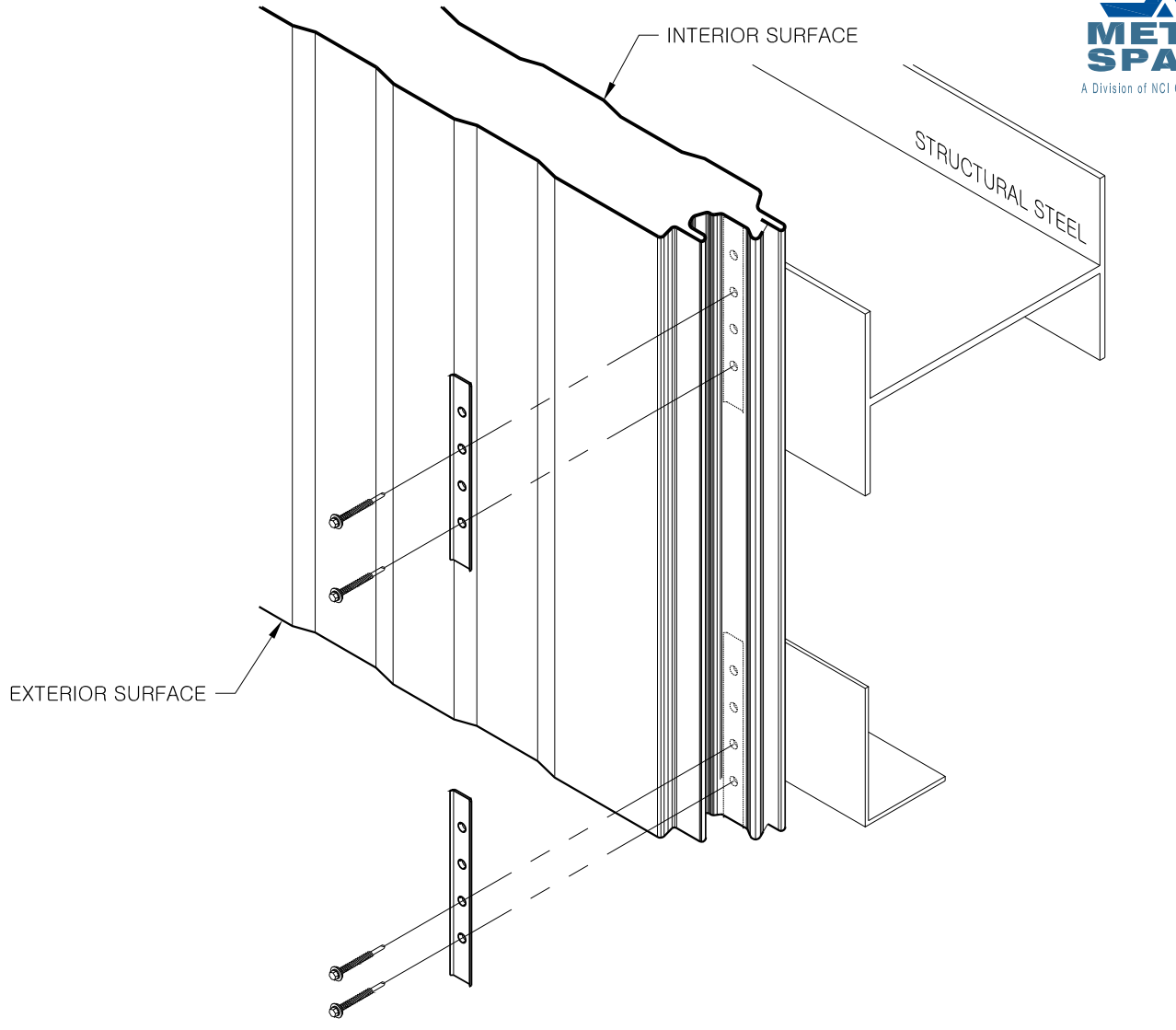
CLIP AND FASTENER ASSEMBLY

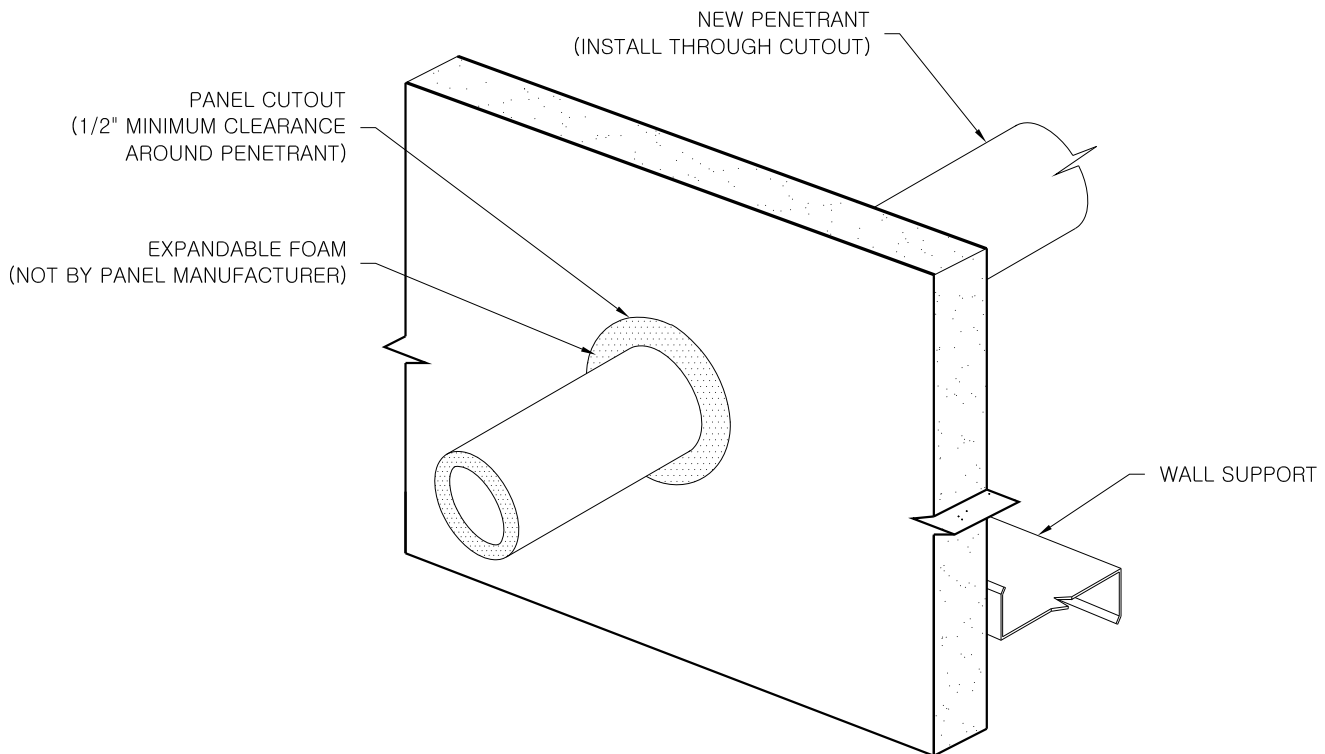


JOINT SEALANT APPLICATION



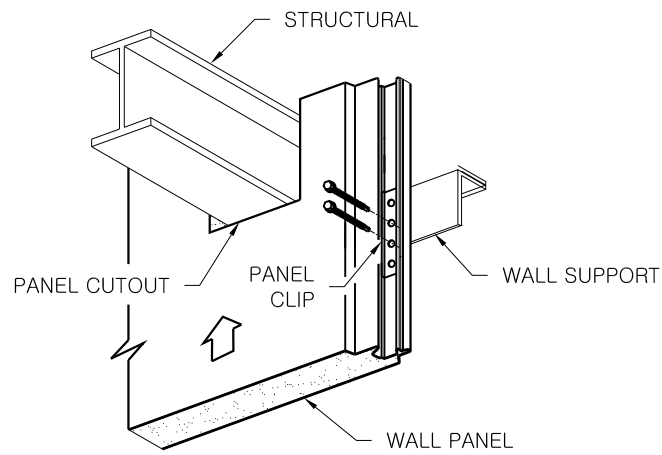




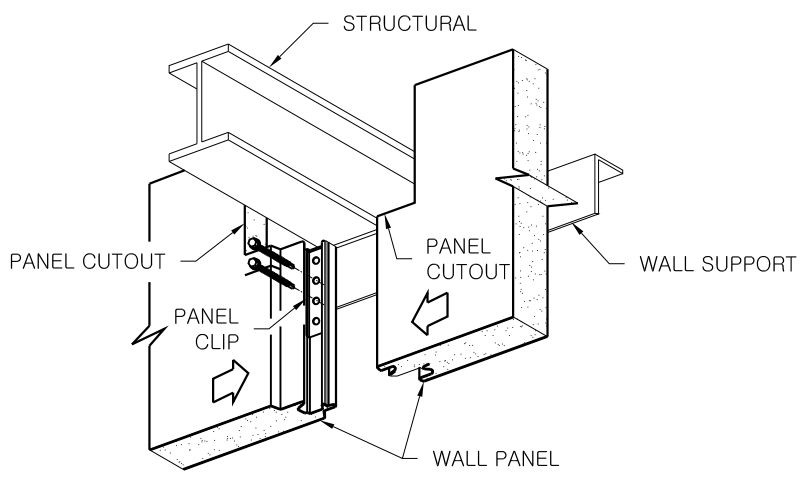


NEW PENETRANT IN EXISTING WALL

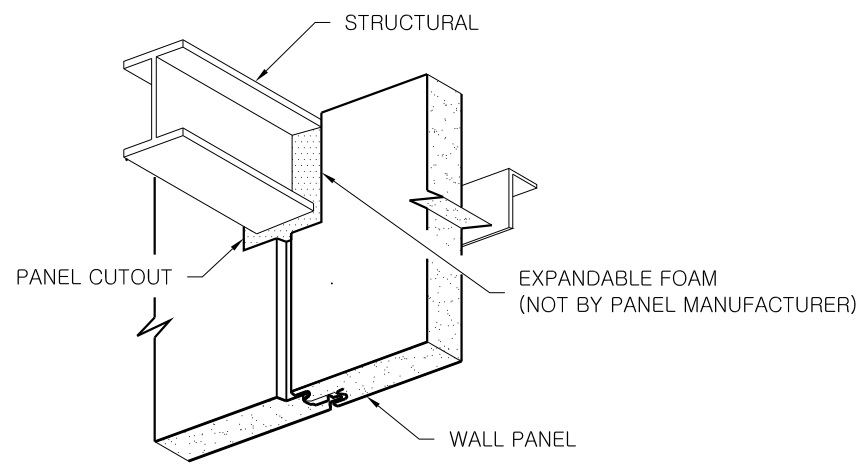
SEE DETAIL CI-CF-PEN-5 FOR FLASHING INFORMATION



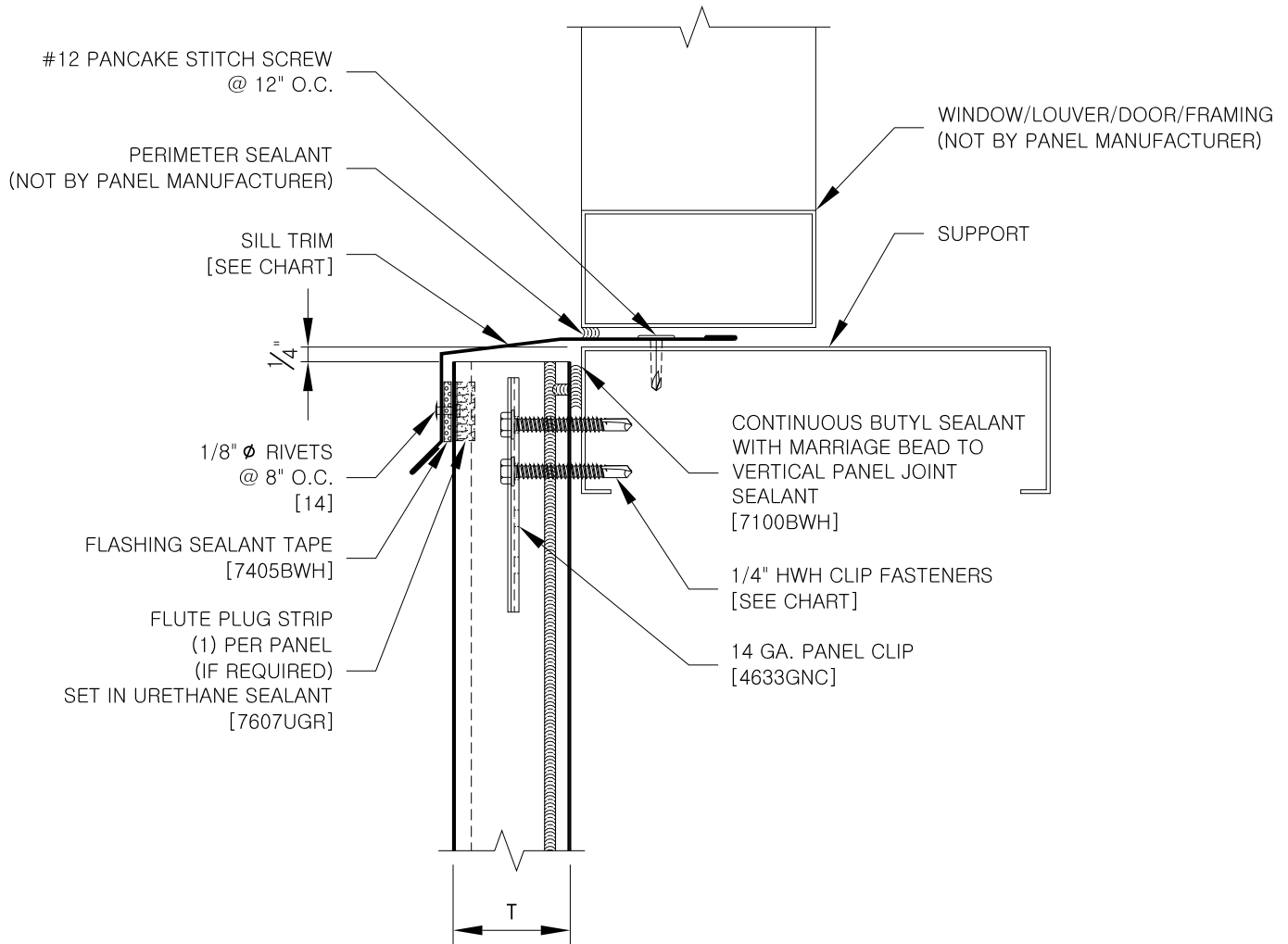
PANEL CUTOUT (AT CENTER OF PANEL)



PANEL CUTOUT (AT PANEL JOINT)



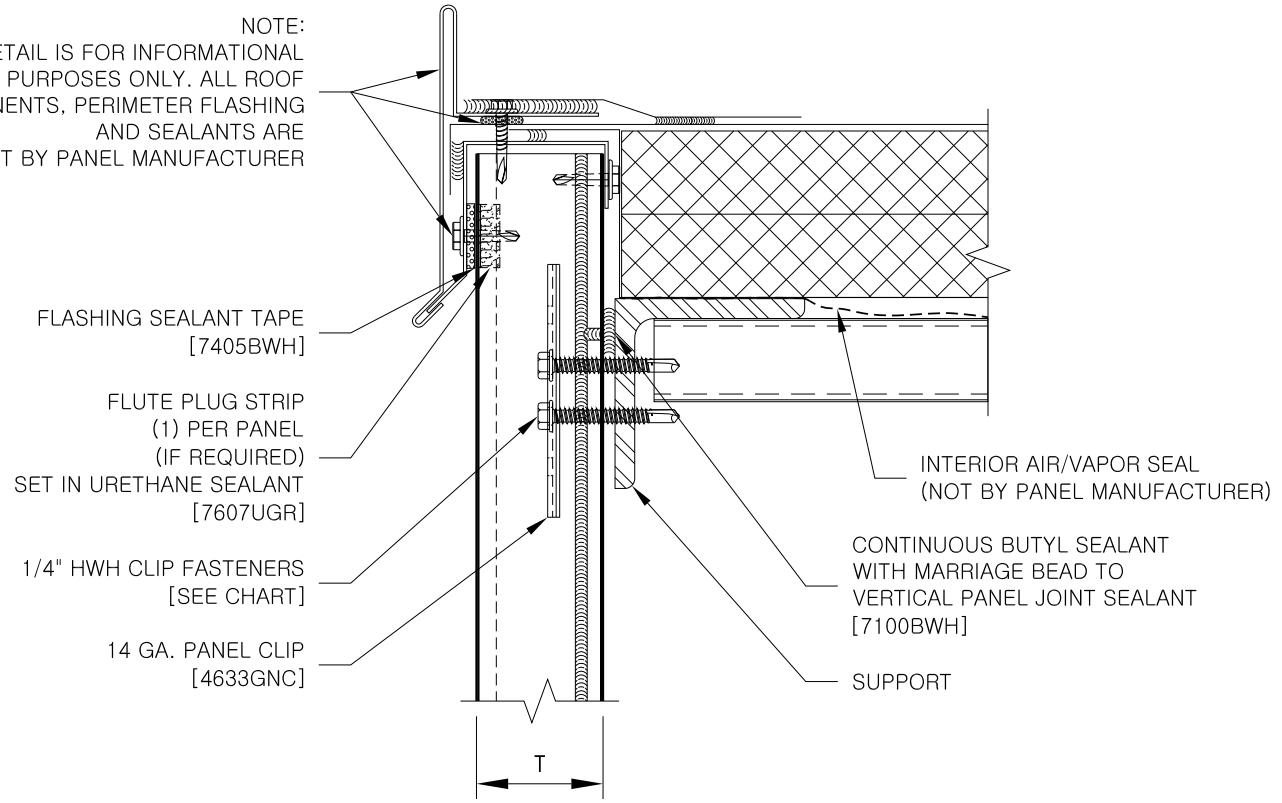
FILLER INSULATION



REFER TO SHEET "CI-CF-INFO" FOR ADDITIONAL INFORMATION REGARDING THE APPLICATION OF SEALANTS, FASTENERS, AND CLOSURE MATERIALS.  
CONSULT METL-SPAN TO DETERMINE ALLOWABLE LOAD AND SPACING OF ATTACHMENT FASTENERS.

T	SILL TRIM	TYPE 3 CLIP FASTENER	TYPE 5 CLIP FASTENER	TYPE B CLIP FASTENER
2"	F5501	1616PNC	1724PNC	1816PNC
2.5"	F5503	1624PNC	1732PNC	1824PNC
2.75"	-	1624PNC	1732PNC	1824PNC
3"	F5507	1624PNC	1732PNC	1824PNC
4"	F5509	1632PNC	1740PNC	1832PNC
COMMERCIAL & INDUSTRIAL		SILL DETAIL W/ FLAT TRIM		CI-CF-SL-01 DATE: 12-16-2015

NOTE:  
THIS DETAIL IS FOR INFORMATIONAL  
PURPOSES ONLY. ALL ROOF  
COMPONENTS, PERIMETER FLASHING  
AND SEALANTS ARE  
NOT BY PANEL MANUFACTURER



REFER TO SHEET "CI-CF-INFO" FOR ADDITIONAL INFORMATION REGARDING THE  
APPLICATION OF SEALANTS, FASTENERS, AND CLOSURE MATERIALS.  
CONSULT METL-SPAN TO DETERMINE ALLOWABLE LOAD AND SPACING OF ATTACHMENT FASTENERS.

T	TYPE III CLIP FASTENER	TYPE V CLIP FASTENER	TYPE B CLIP FASTENER
2"	1616PNC	1724PNC	1816PNC
2.5"	1624PNC	1732PNC	1824PNC
3"	1624PNC	1732PNC	1824PNC
2.75"	1624PNC	1732PNC	1824PNC
4"	1632PNC	1740PNC	1832PNC