

SWAGED ENDLAP TAPE SEALER  
[HW-515]

VIEW "A"

SWAGED ENDLAP  
TAPE SEALER  
[HW-515]

VIEW "A"

PREPUNCHED HOLES  
(16" PANEL ONLY)

UPPER SWAGED  
SUPERLOK PANEL

BACKUP PLATE  
[HW-7766] 16" PANEL  
[HW-7764] 12" PANEL

TRI-BEAD TAPE SEALER  
[HW-504] @ 16" PANEL  
TRIPLE-BEAD TAPE SEALER  
[HW-502] @ 12" PANEL

LOWER  
SUPERLOK PANEL

1/4-14 x 5/8 LONG-LIFE  
"TYPE B" SELF-TAPPER  
W/WASHER [FASTENER #46]  
(5) PER 16" PANEL  
(4) PER 12" PANEL

TRI-BEAD TAPE SEALER  
[HW-504] @ 16" PANEL  
TRIPLE-BEAD TAPE SEALER  
[HW-502] @ 12" PANEL

LOW FLOATING CLIP  
[HW-230]

BEARING PLATE  
[HW-7500]

SUPERLOK PANEL  
(LOWER)

UPPER SWAGED  
SUPERLOK PANEL

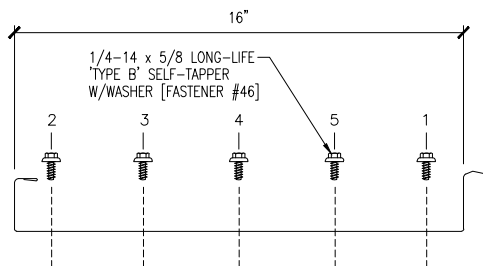
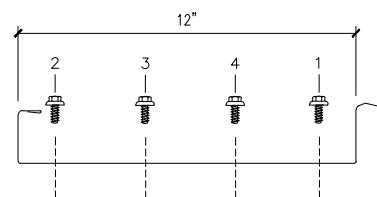
BACKUP PLATE  
[HW-7766] 16" PANEL  
[HW-7764] 12" PANEL

RIGID INSULATION  
(NOT BY MBCI)

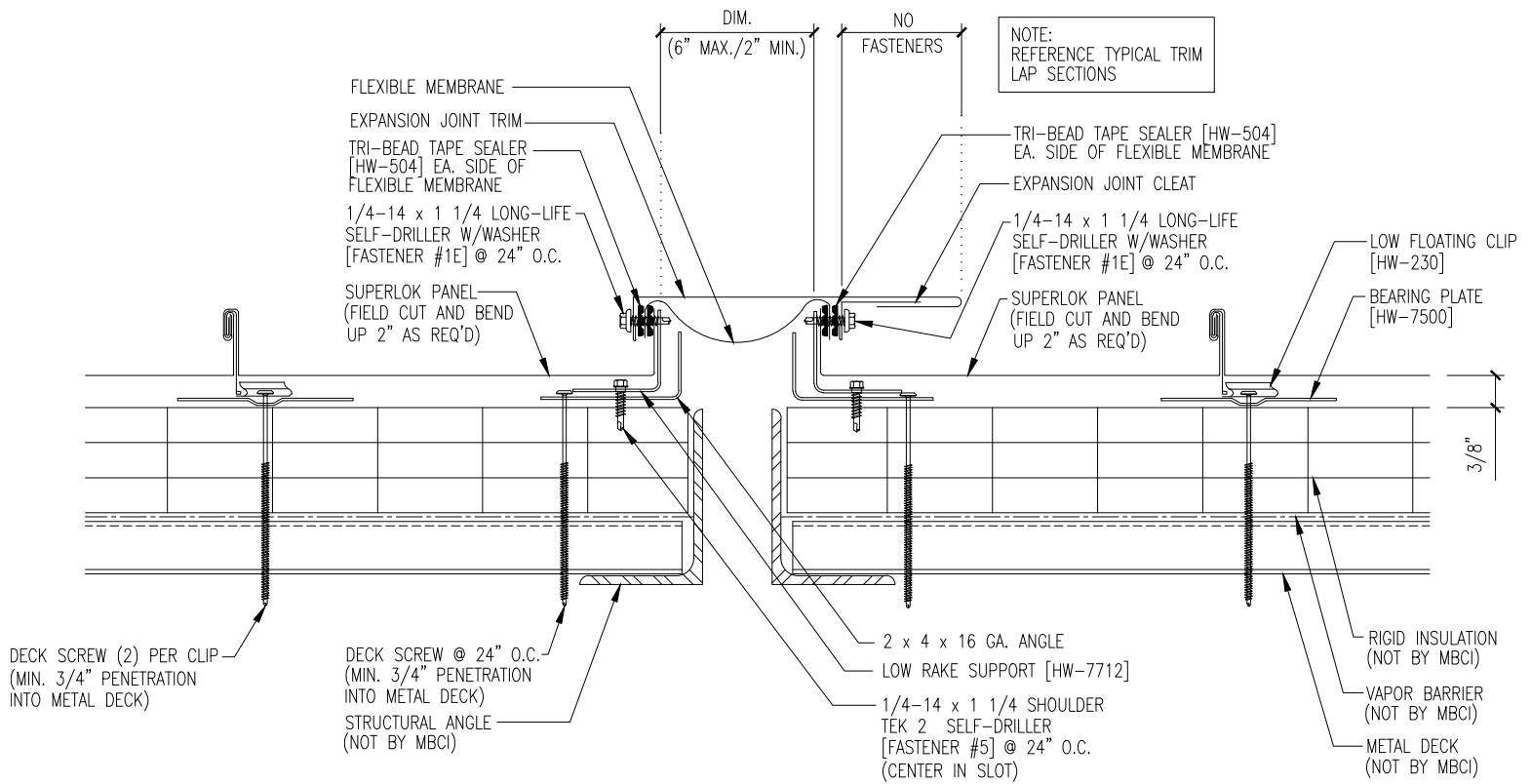
METAL DECK  
(NOT BY MBCI)

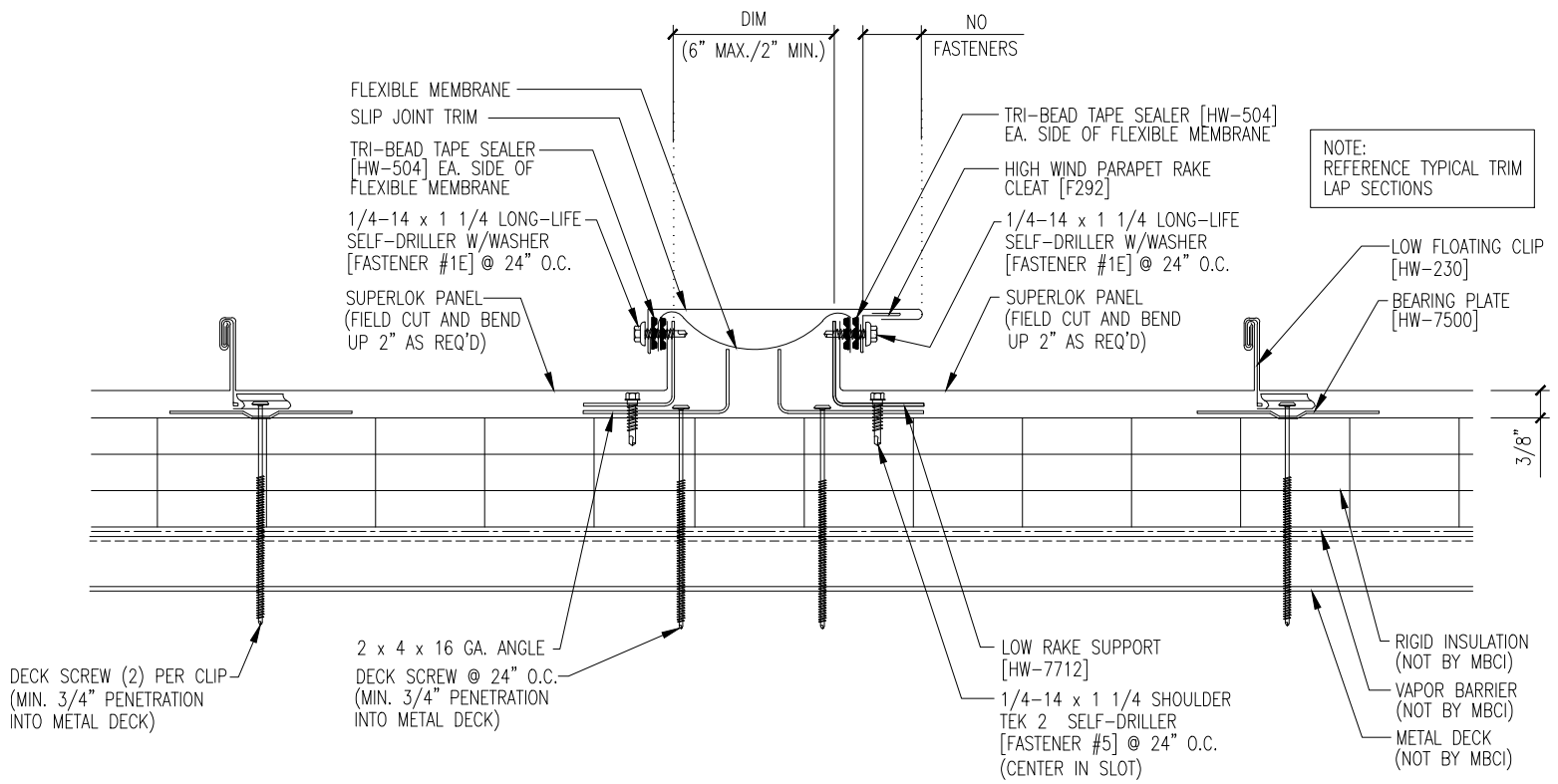
DECK SCREW (2) PER CLIP  
(MIN. 3/4" PENETRATION  
INTO METAL DECK)

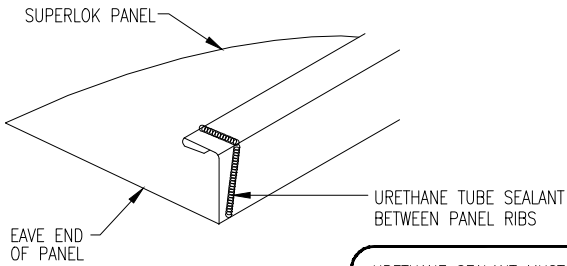
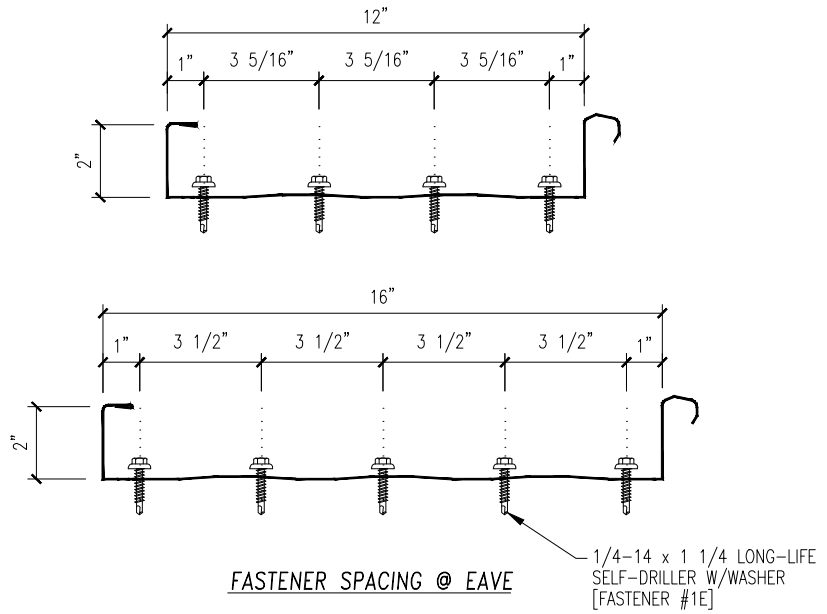
VAPOR BARRIER  
(NOT BY MBCI)



FASTENER INSTALLATION SEQUENCE







EAVE SEALANT DETAIL

URETHANE SEALANT MUST COME IN CONTACT WITH TAPE SEALER TO FORM A WEATHERTIGHT SEAL

1/4-14 x 7/8 LONG-LIFE LAPTEK W/WASHER [FASTENER #4] @ 16" O.C.

BOX PANEL CAP TRIM [FL-272]

SCULPTURED EAVE TRIM [FL-253]

1/8 x 3/16 POP RIVET [FASTENER #14] @ 3'-0" O.C.

12-24 x 1 1/4 LONG-LIFE TEK 4.5 W/WASHER [FASTENER #78]

1/4-14 x 7/8 LONG-LIFE LAPTEK W/WASHER [FASTENER #4] @ 12" O.C.

OUTSIDE CLOSURE WALL PANEL

VARIES W/ ROOF SLOPE

WALL PANEL THICKNESS

3/4"

1/4-14 x 1 1/4 LONG-LIFE SELF-DRILLER W/WASHER [FASTENER #1E] (5) PER 16" PANEL (4) PER 12" PANEL

URETHANE TUBE SEALANT BETWEEN PANEL RIBS TRI-BEAD TAPE SEALER [HW-504]

12

SUPERLOK PANEL

3/8"

RIGID INSULATION (NOT BY MBCI) VAPOR BARRIER (NOT BY MBCI) METAL DECK (NOT BY MBCI)

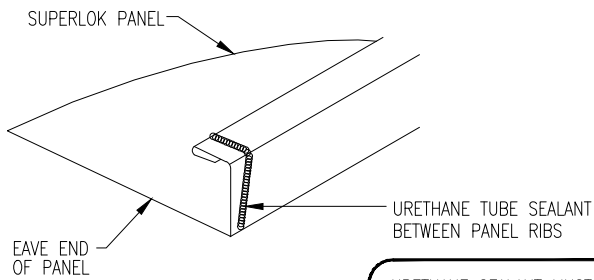
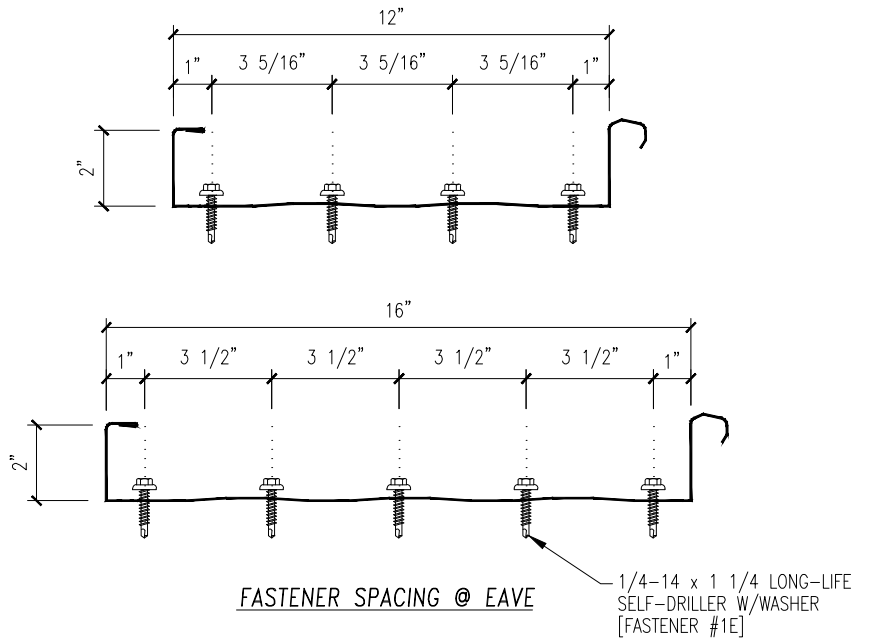
3" x 5" x 14 GA. BENT PLATE (HOLD TOP OF PLATE 3/8" ABOVE TOP OF RIGID INSULATION)

1/8 x 3/8 POP RIVET [FASTENER #14A] @ 5'-0" O.C.

12-24 x 1 1/2 PAN HEAD TEK 4.5 SELF-DRILLER [FASTENER #16] @ 12" O.C. STRUCTURAL ANGLE (NOT BY MBCI)

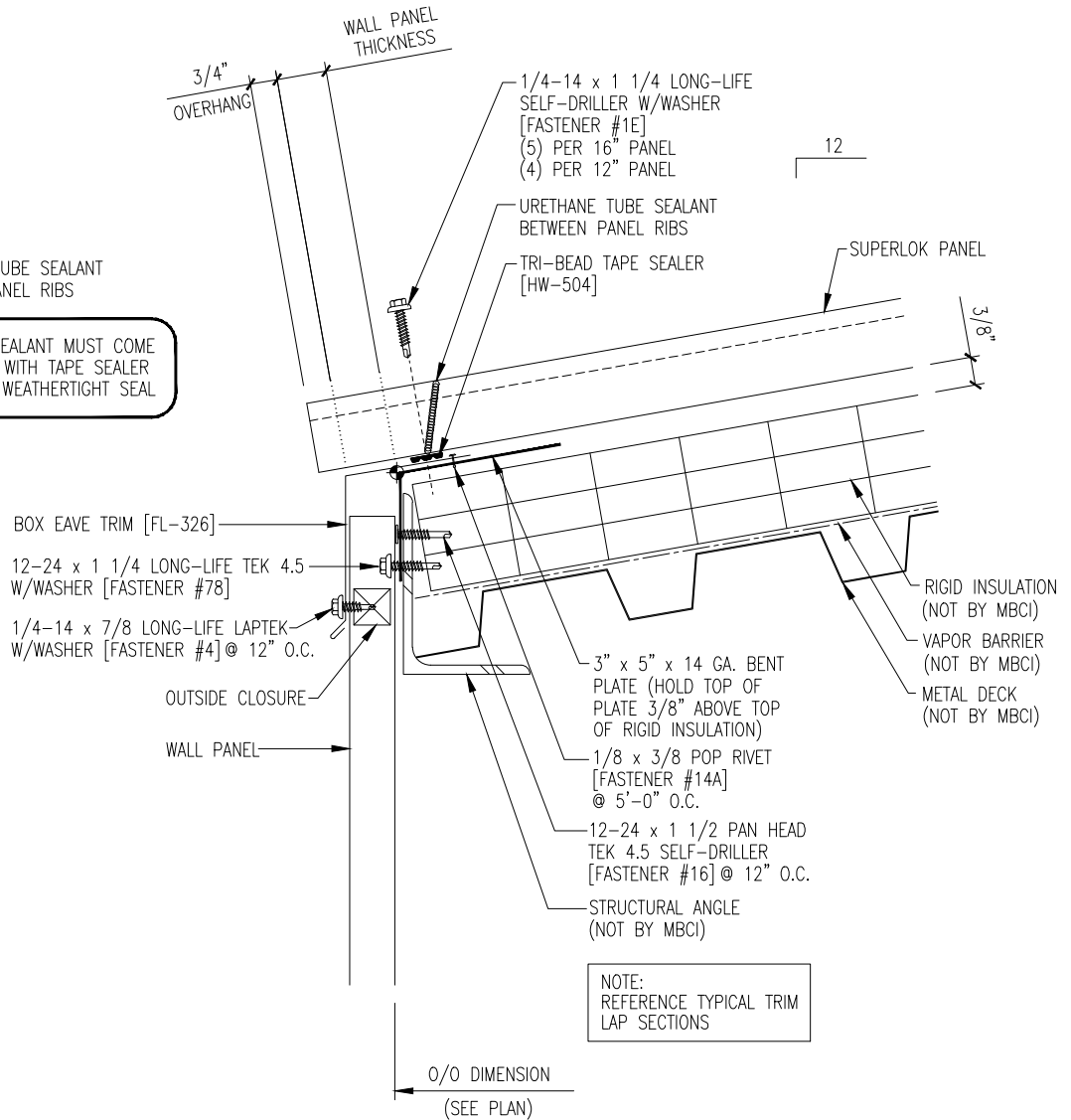
NOTE: REFERENCE TYPICAL TRIM LAP SECTIONS

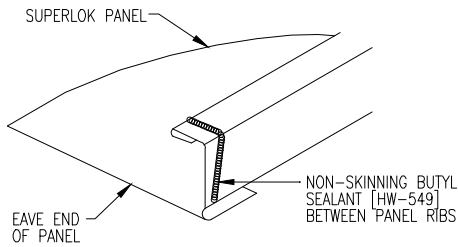
O/O DIMENSION (SEE PLAN)



**EAVE SEALANT DETAIL**

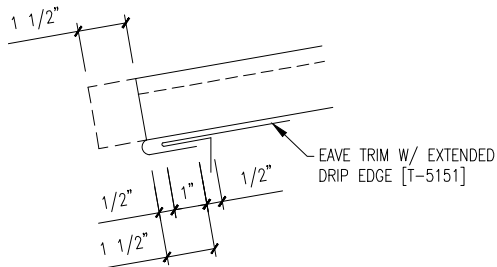
URETHANE SEALANT MUST COME IN CONTACT WITH TAPE SEALER TO FORM A WEATHERTIGHT SEAL





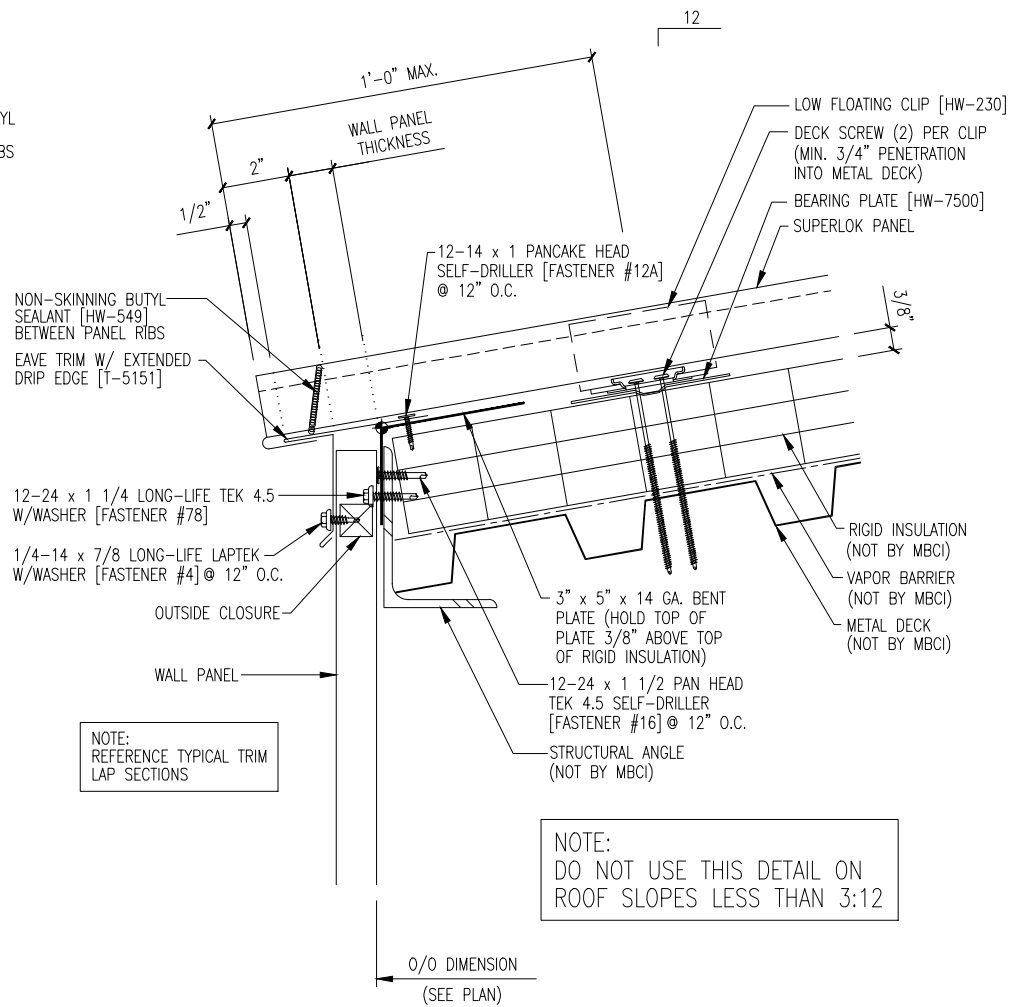
### EAVE SEALANT DETAIL

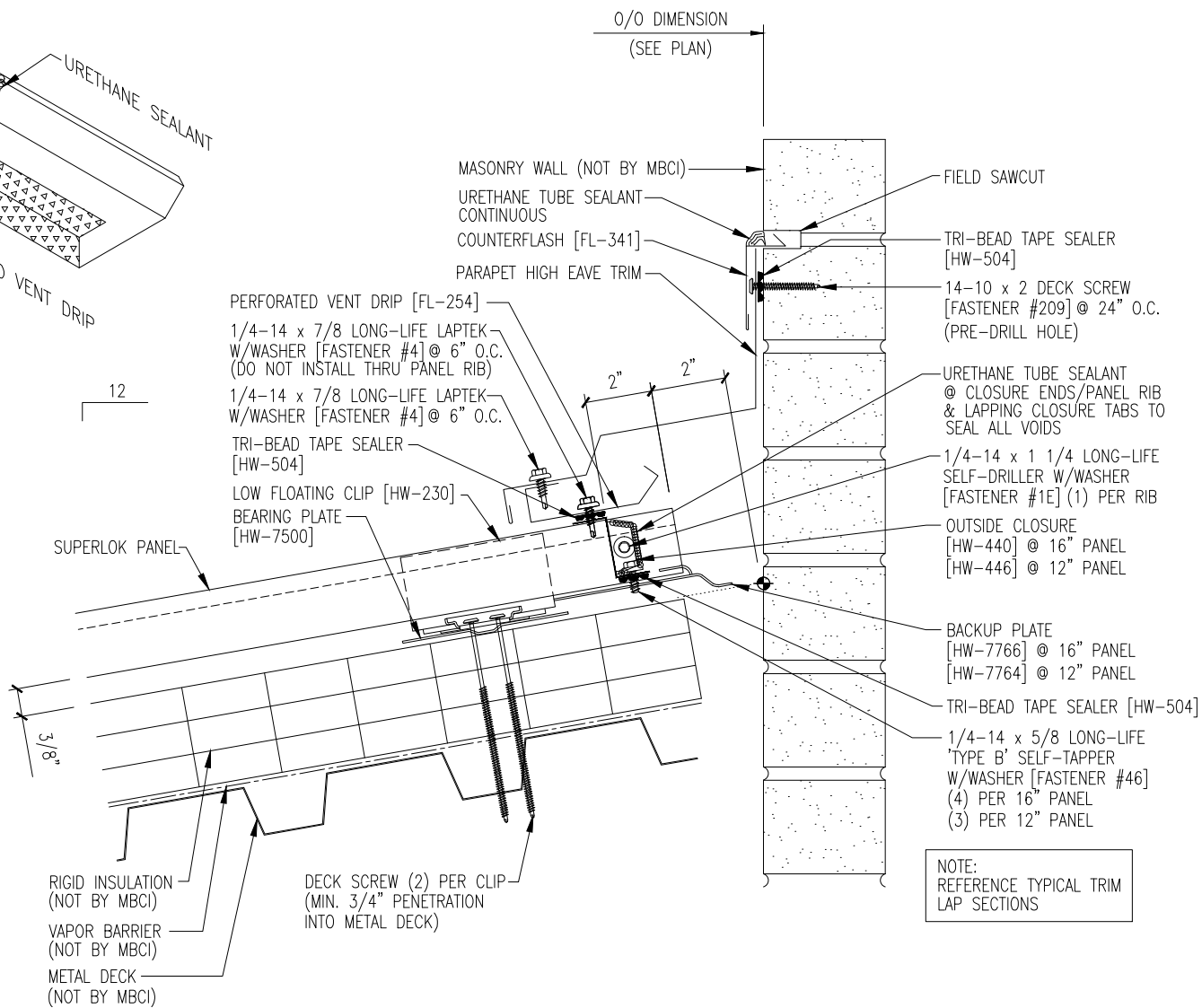
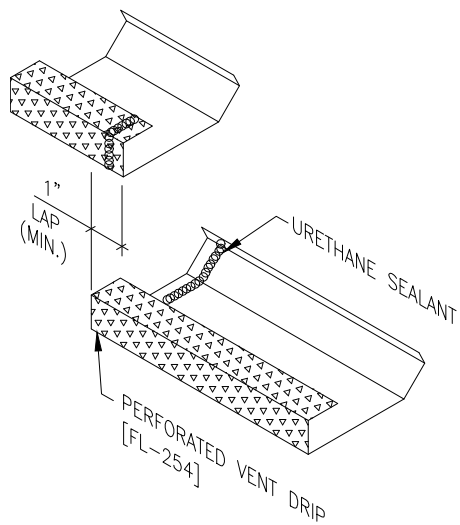
BUTYL SEALANT MUST COME IN CONTACT WITH THE DRIP EDGE TO FORM A WEATHERTIGHT SEAL

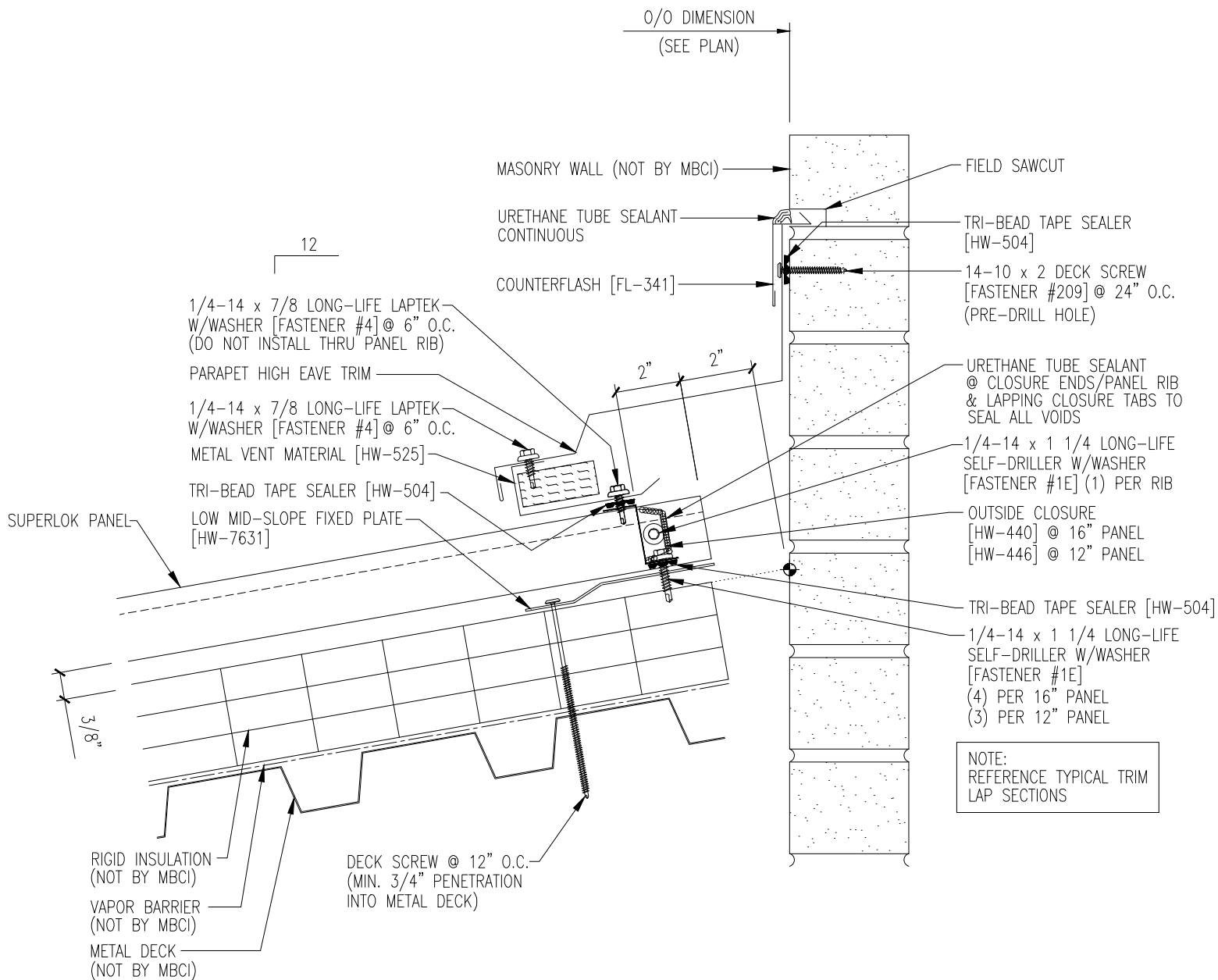


### PANEL ENGAGEMENT DETAIL

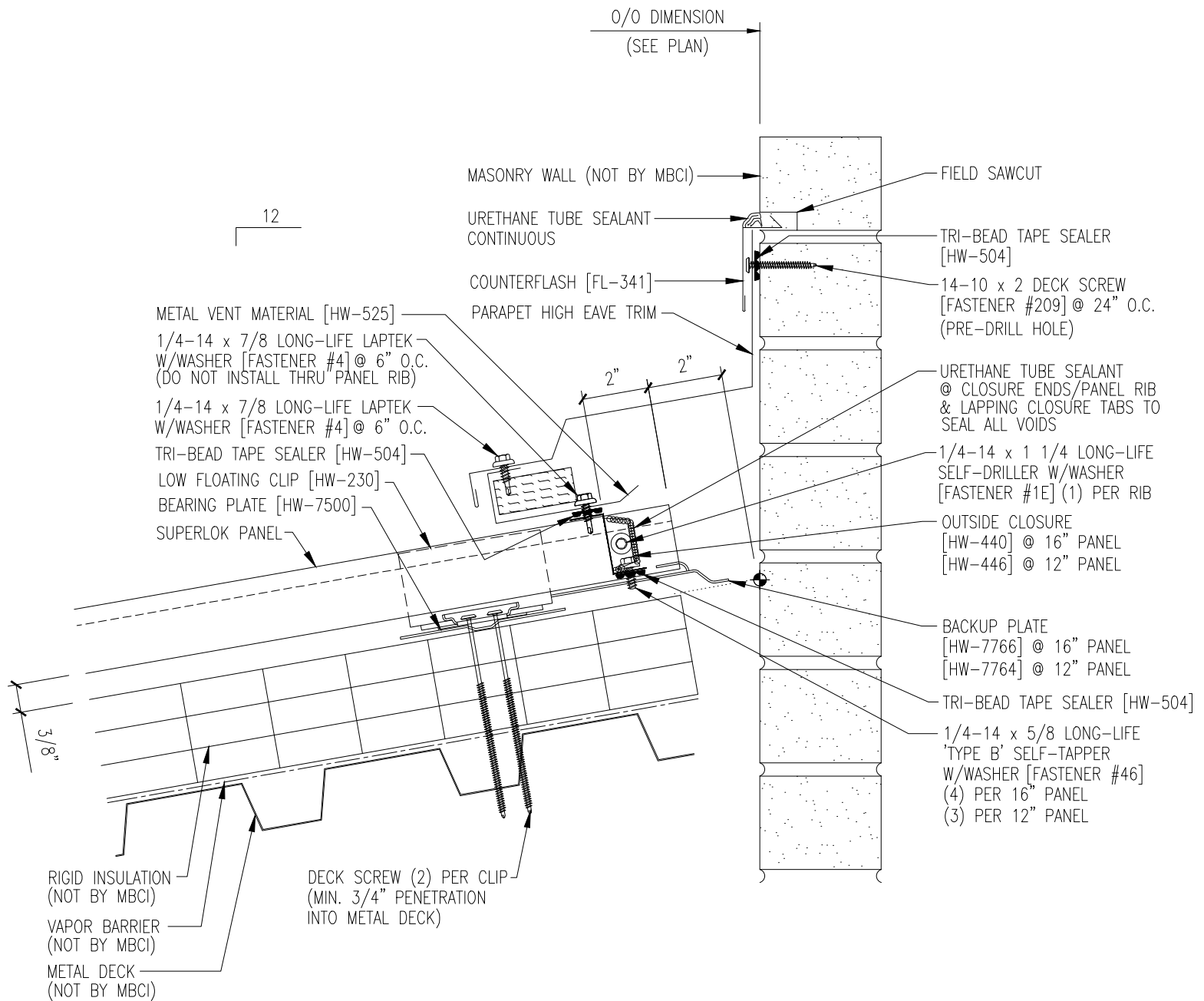
FIELD NOTCH PANEL AS REQ'D. & BEND PAN TO FORM OPEN HEM

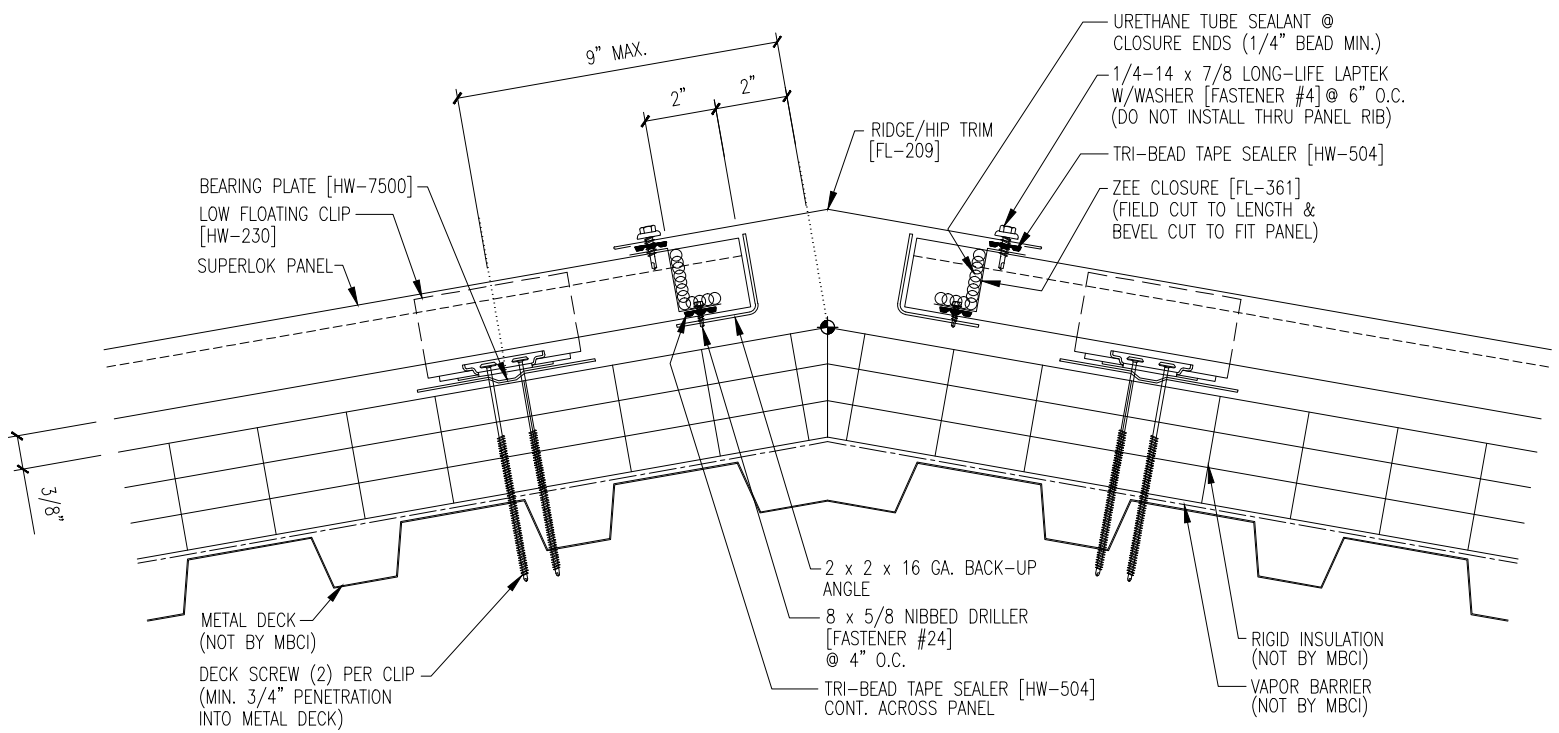




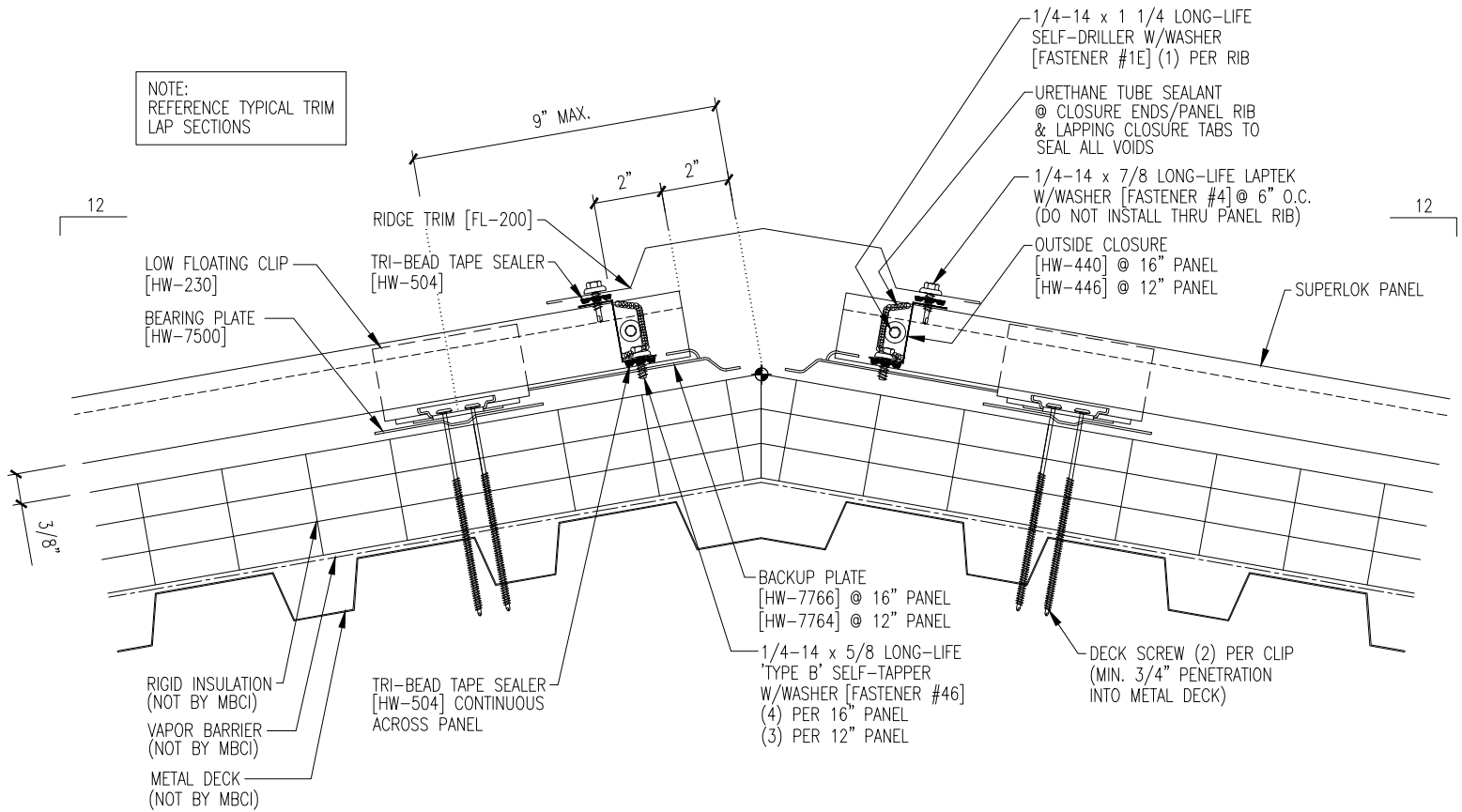


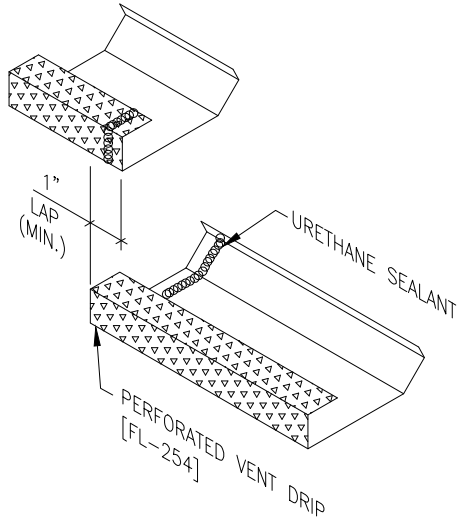






NOTE:  
REFERENCE TYPICAL TRIM  
LAP SECTIONS





NOTE:  
REFERENCE TYPICAL TRIM  
LAP SECTIONS

TRI-BEAD TAPE SEALER [HW-504]  
1/4-14 x 7/8 LONG-LIFE LAPTEK  
W/WASHER [FASTENER #4] @ 6" O.C.  
PERFORATED VENT DRIP [FL-254]  
LOW FLOATING CLIP [HW-230]  
BEARING PLATE [HW-7500]

9" MAX.

RIDGE TRIM  
[FL-300]

1/4-14 x 1 1/4 LONG-LIFE  
SELF-DRILLER W/WASHER  
[FASTENER #1E] (1) PER RIB

URETHANE TUBE SEALANT  
@ CLOSURE ENDS/PANEL RIB  
& LAPPING CLOSURE TABS TO  
SEAL ALL VOIDS

1/4-14 x 7/8 LONG-LIFE LAPTEK  
W/WASHER [FASTENER #4] @ 6" O.C.  
(DO NOT INSTALL THRU PANEL RIB)

OUTSIDE CLOSURE  
[HW-440] @ 16" PANEL  
[HW-446] @ 12" PANEL

SUPERLOK PANEL

BACKUP PLATE  
[HW-7766] @ 16" PANEL  
[HW-7764] @ 12" PANEL

1/4-14 x 5/8 LONG-LIFE  
'TYPE B' SELF-TAPPER  
W/WASHER [FASTENER #46]  
(4) PER 16" PANEL  
(3) PER 12" PANEL

TRI-BEAD TAPE SEALER [HW-504]  
CONT. ACROSS PANEL

RIGID INSULATION  
(NOT BY MBCI)

VAPOR BARRIER  
(NOT BY MBCI)

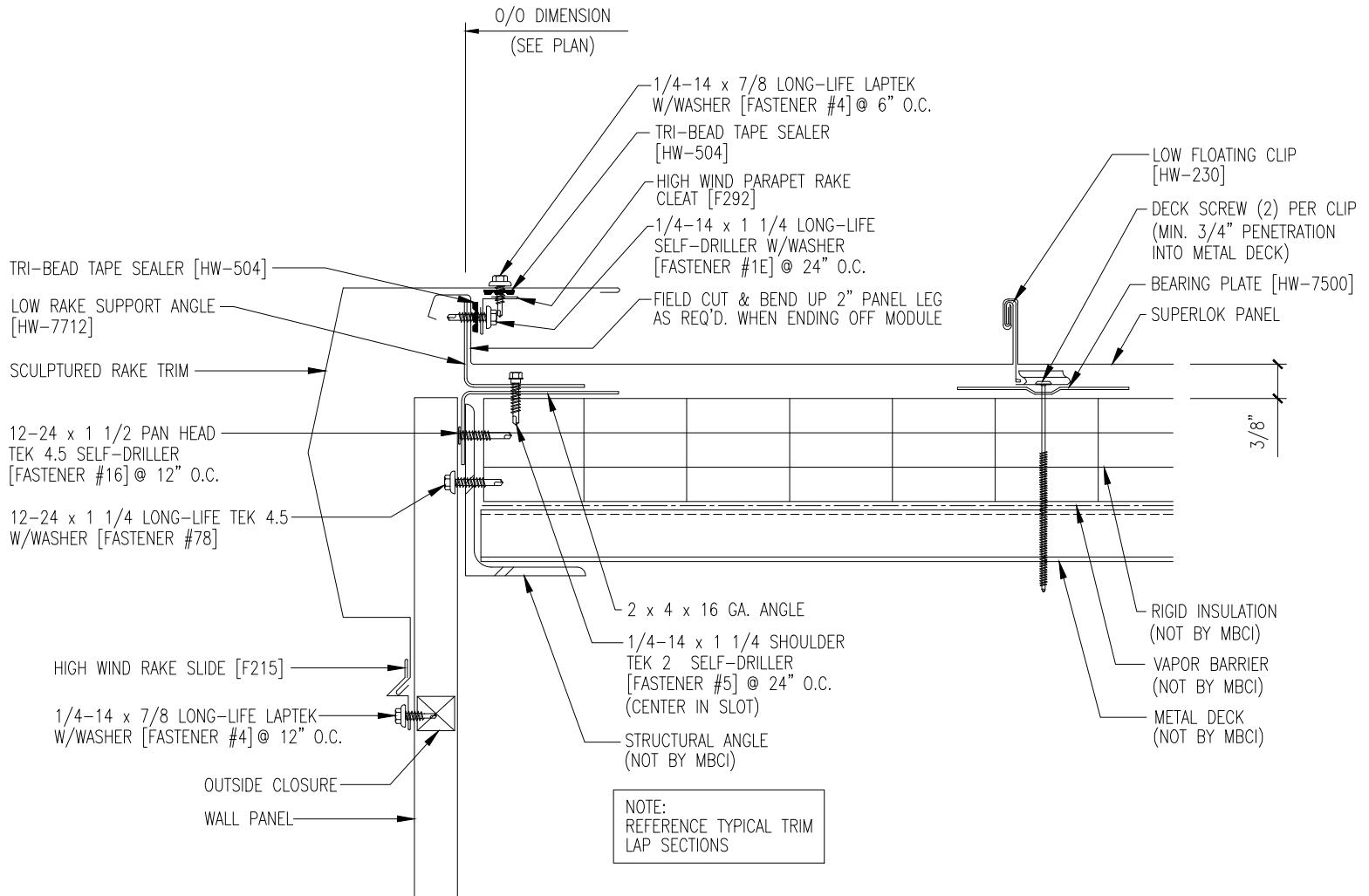
METAL DECK  
(NOT BY MBCI)

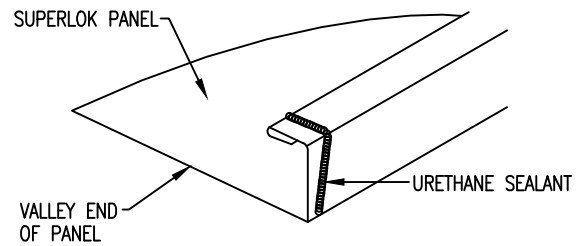
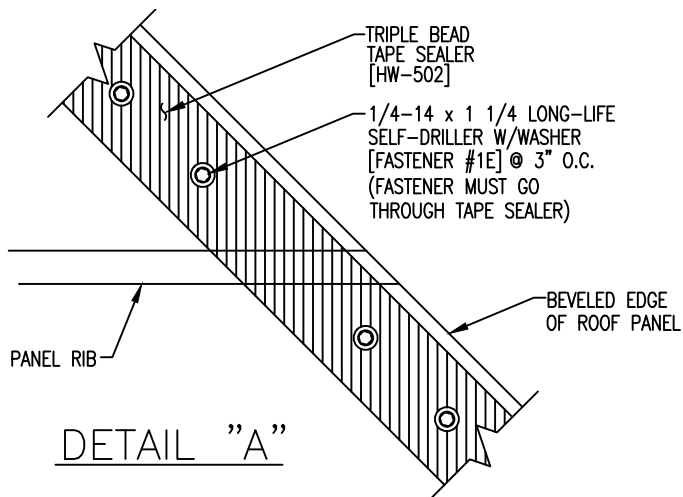
DECK SCREW (2) PER CLIP  
(MIN. 3/4" PENETRATION  
INTO METAL DECK)

3/8"

12

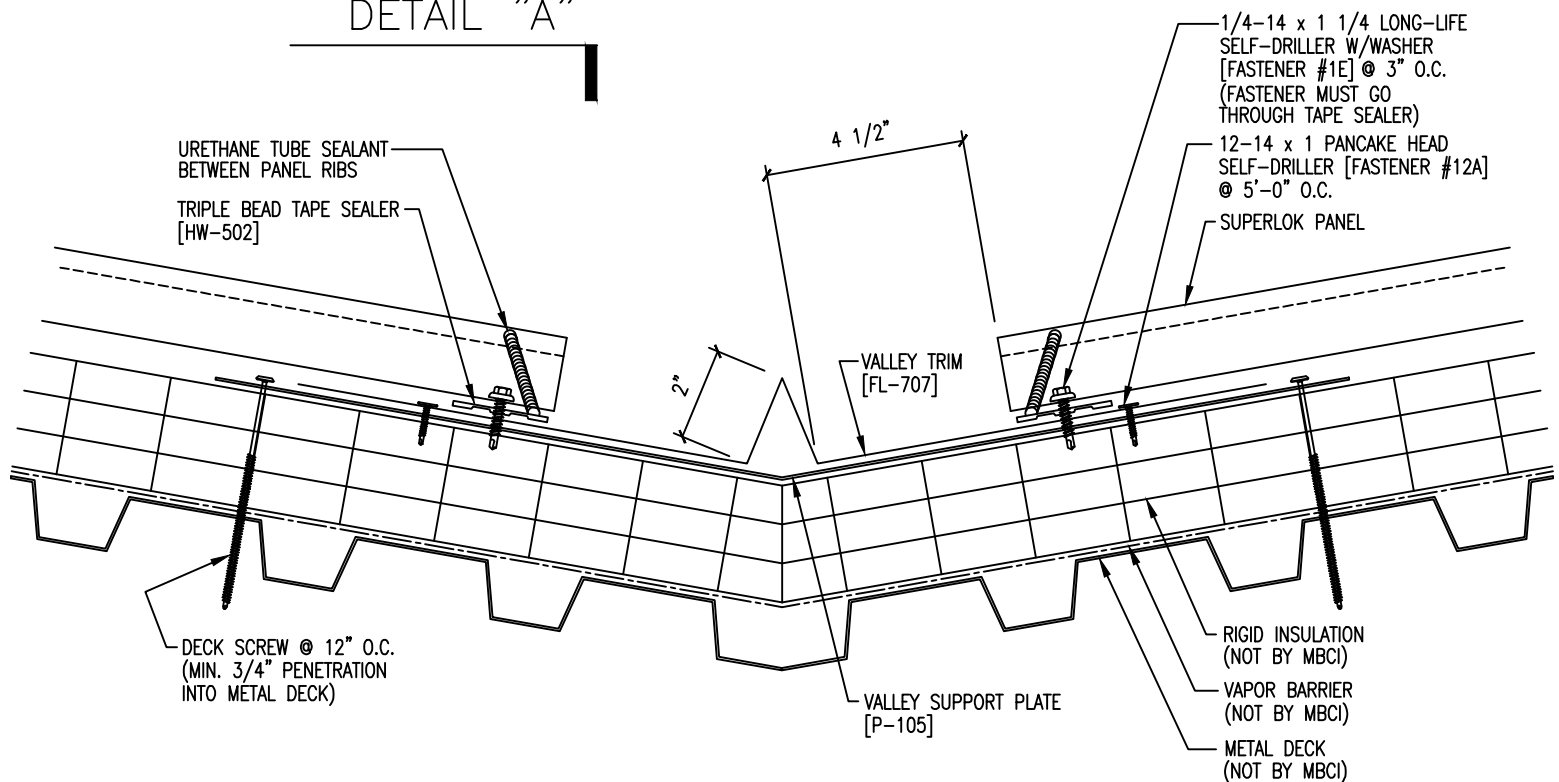
12

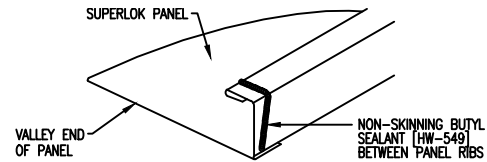
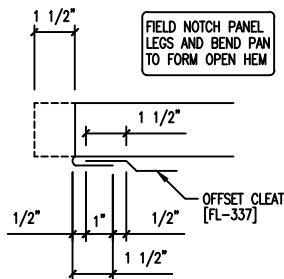




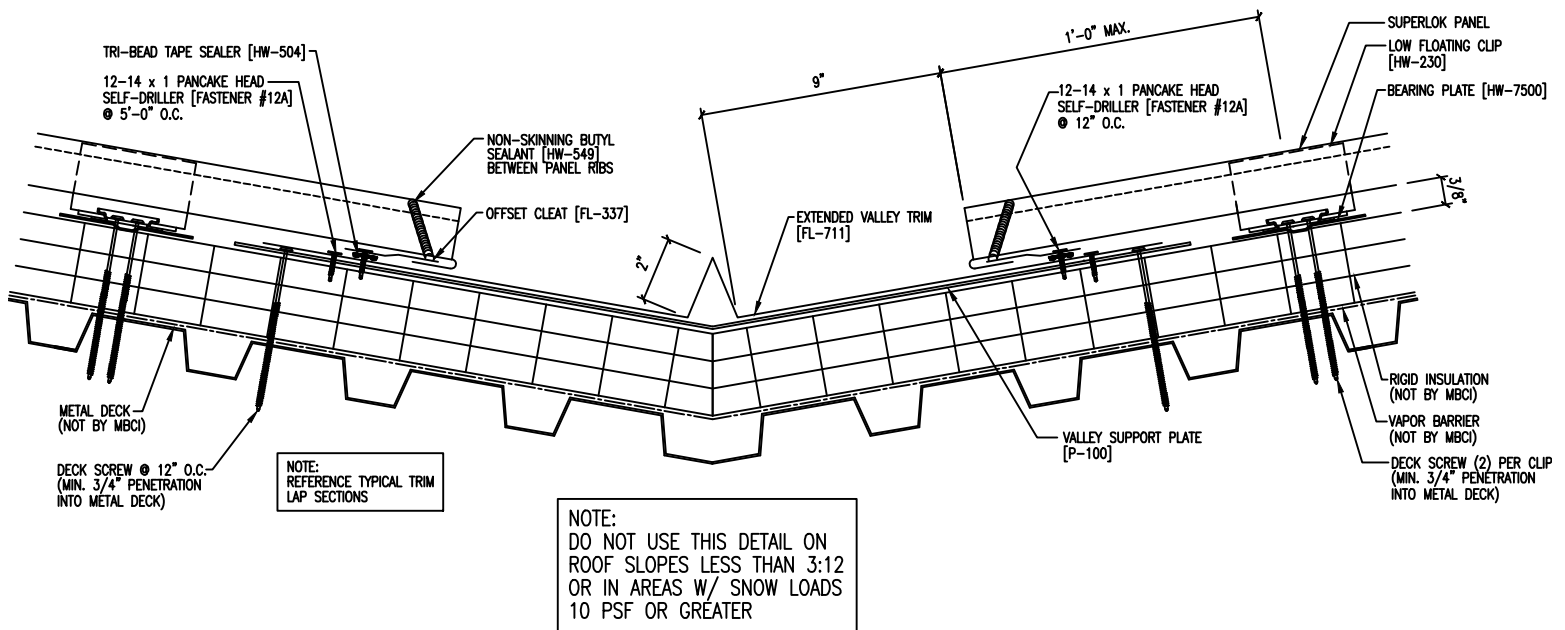
URETHANE SEALANT MUST COME IN CONTACT WITH TAPE SEALER TO FORM A WEATHERTIGHT SEAL

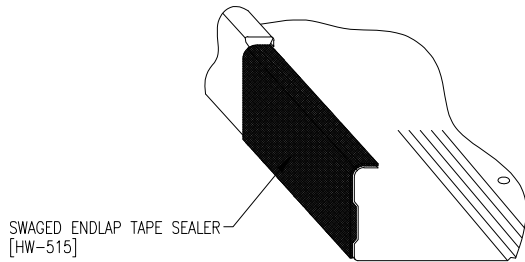
DETAIL "A"



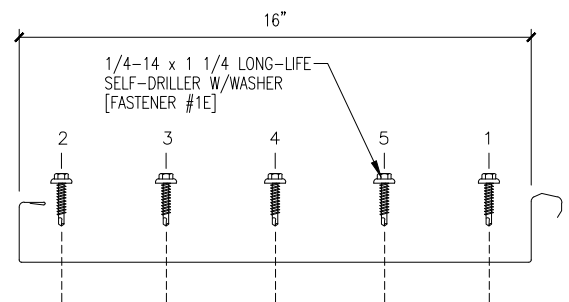
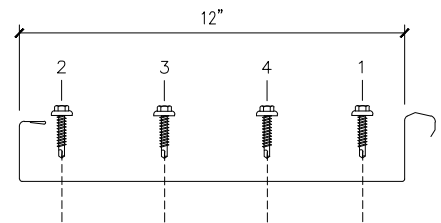
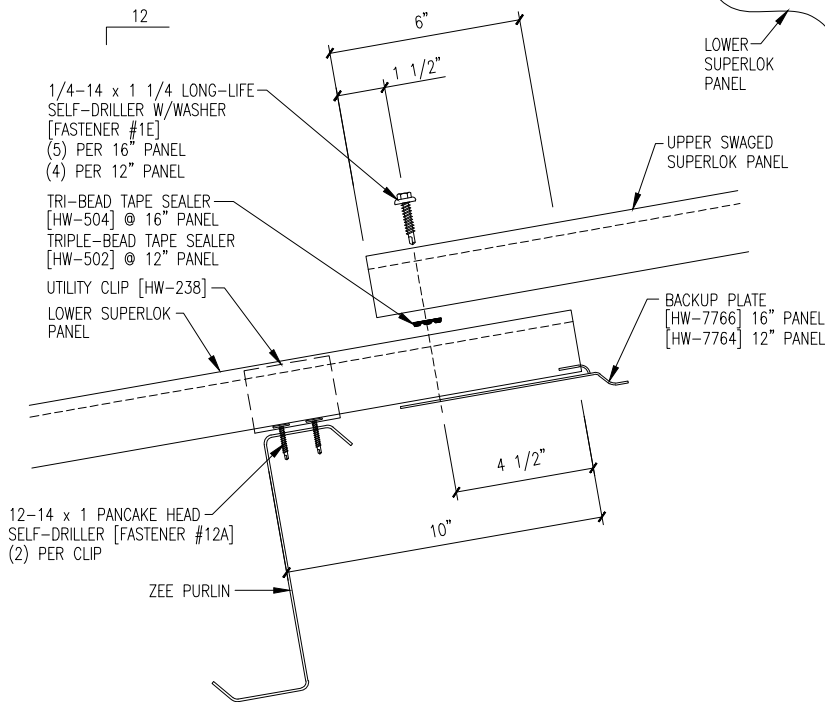
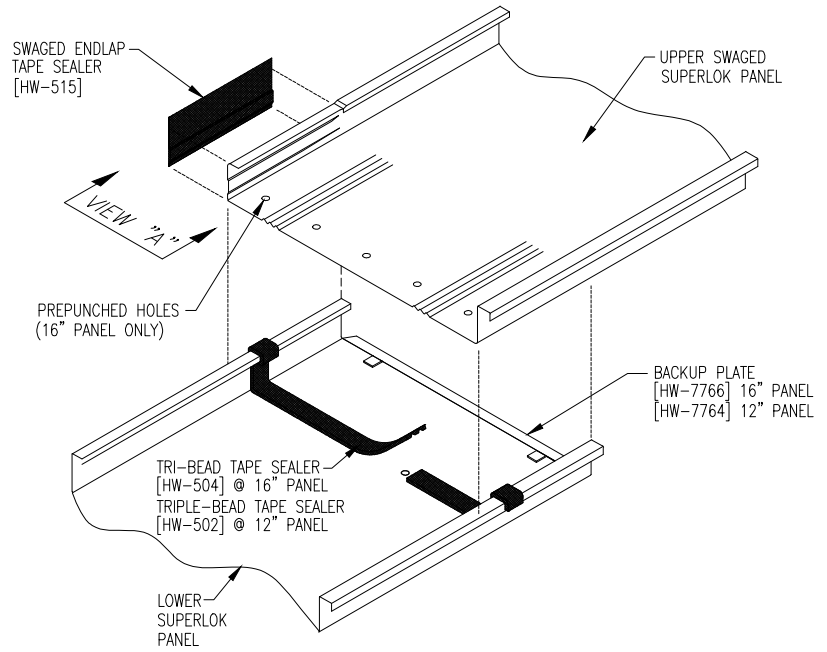


BUTYL SEALANT MUST COME IN CONTACT WITH THE OFFSET CLEAT TO FORM A WEATHERTIGHT SEAL





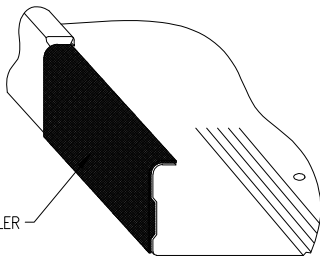
VIEW "A"



FASTENER INSTALLATION SEQUENCE

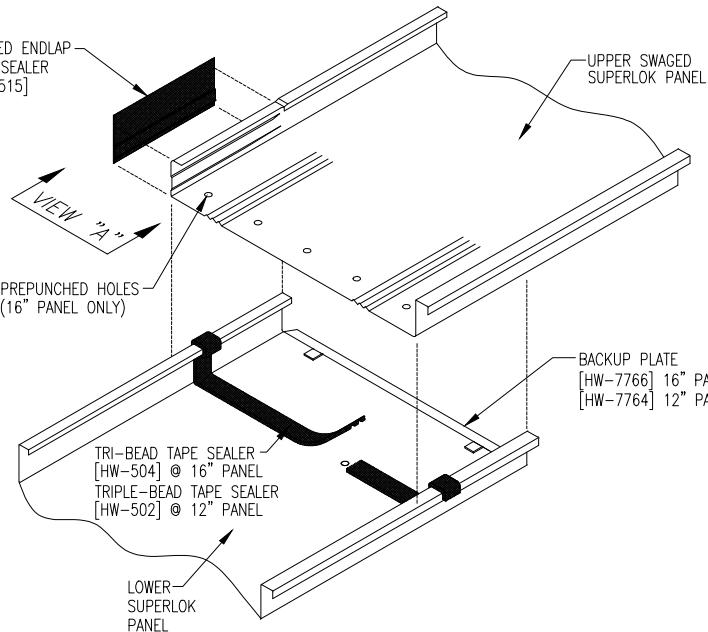


SWAGED ENDLAP TAPE SEALER  
[HW-515]



VIEW "A"

SWAGED ENDLAP  
TAPE SEALER  
[HW-515]



UPPER SWAGED  
SUPERLOK PANEL

PREPUNCHED HOLES  
(16" PANEL ONLY)

BACKUP PLATE  
[HW-7766] 16" PANEL  
[HW-7764] 12" PANEL

UPPER SWAGED  
SUPERLOK PANEL

LOWER  
SUPERLOK  
PANEL

TRI-BEAD TAPE SEALER  
[HW-504] @ 16" PANEL  
TRIPLE-BEAD TAPE SEALER  
[HW-502] @ 12" PANEL

1/4-14 x 1 1/4 LONG-LIFE  
SELF-DRILLER W/WASHER  
[FASTENER #1E]  
(5) PER 16" PANEL  
(4) PER 12" PANEL

TRI-BEAD TAPE SEALER  
[HW-504] @ 16" PANEL  
TRIPLE-BEAD TAPE SEALER  
[HW-502] @ 12" PANEL

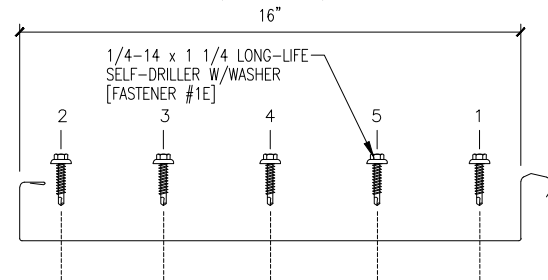
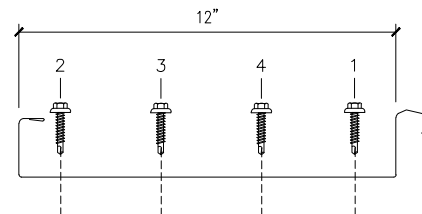
HIGH FLOATING CLIP  
[HW-232]

LOWER SUPERLOK-  
PANEL

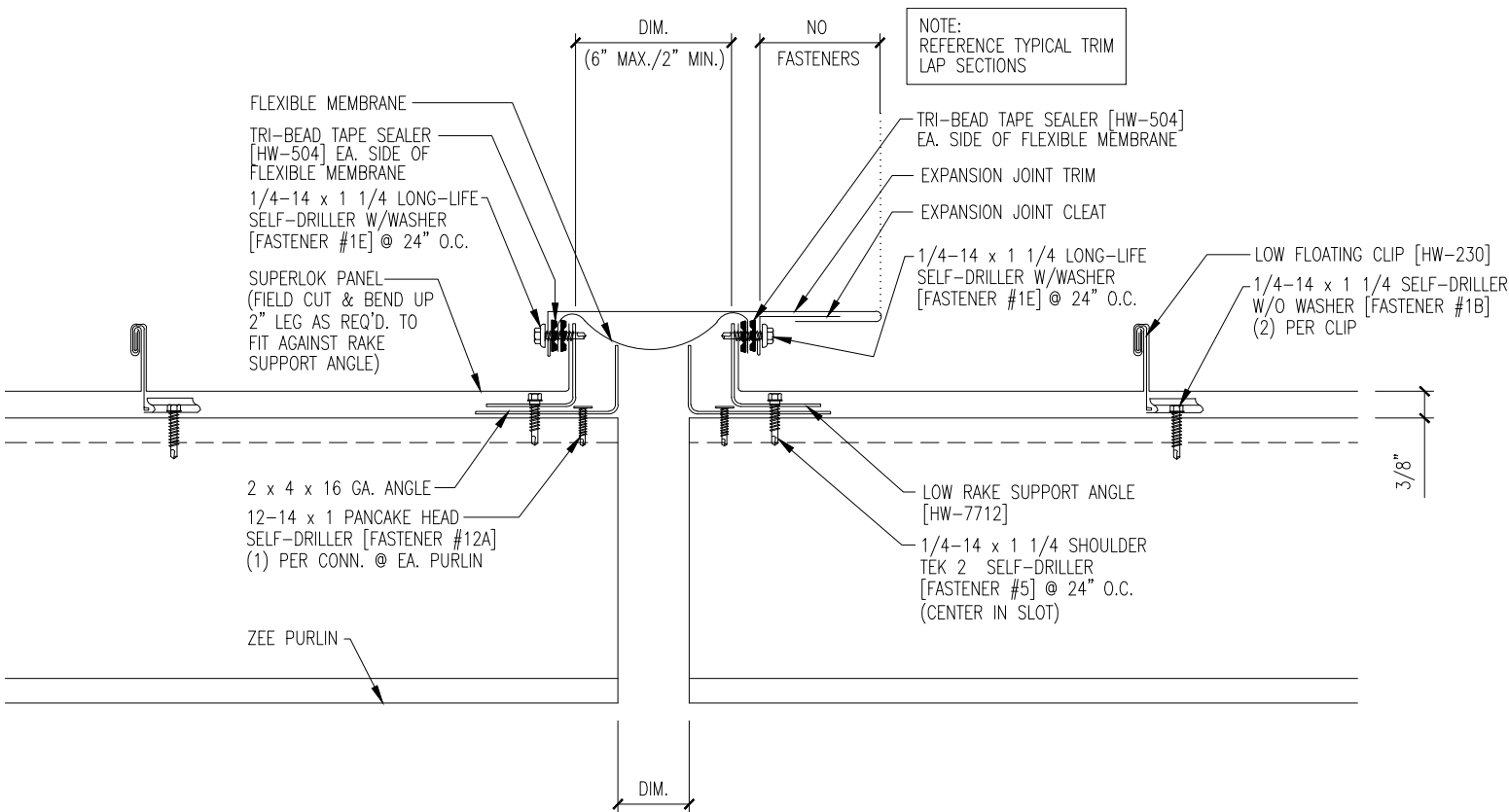
BACKUP PLATE  
[HW-7766] 16" PANEL  
[HW-7764] 12" PANEL

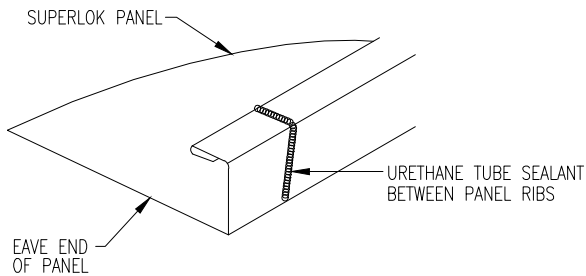
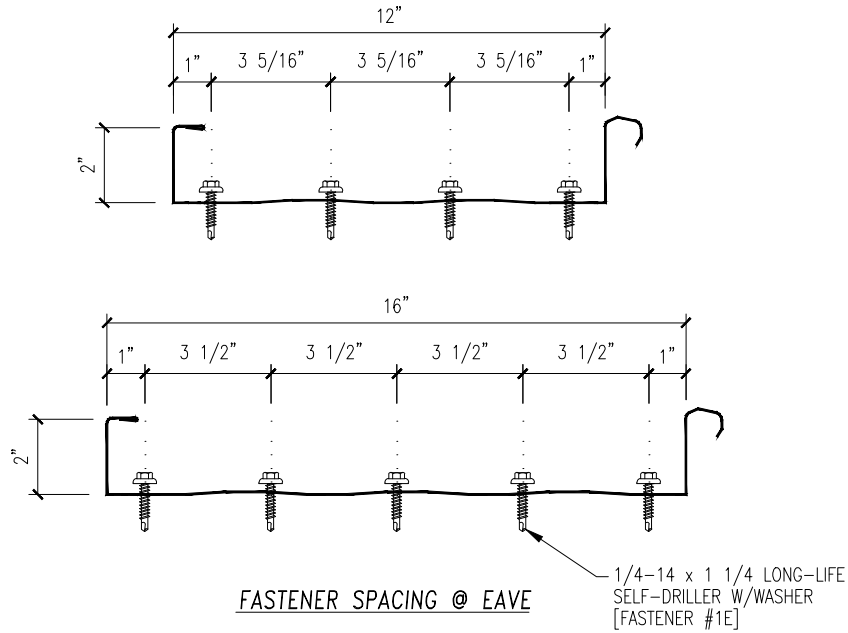
1/4-14 x 1 1/4 SELF-DRILLER  
W/O WASHER [FASTENER #1B]  
(2) PER CLIP

ZEE PURLIN



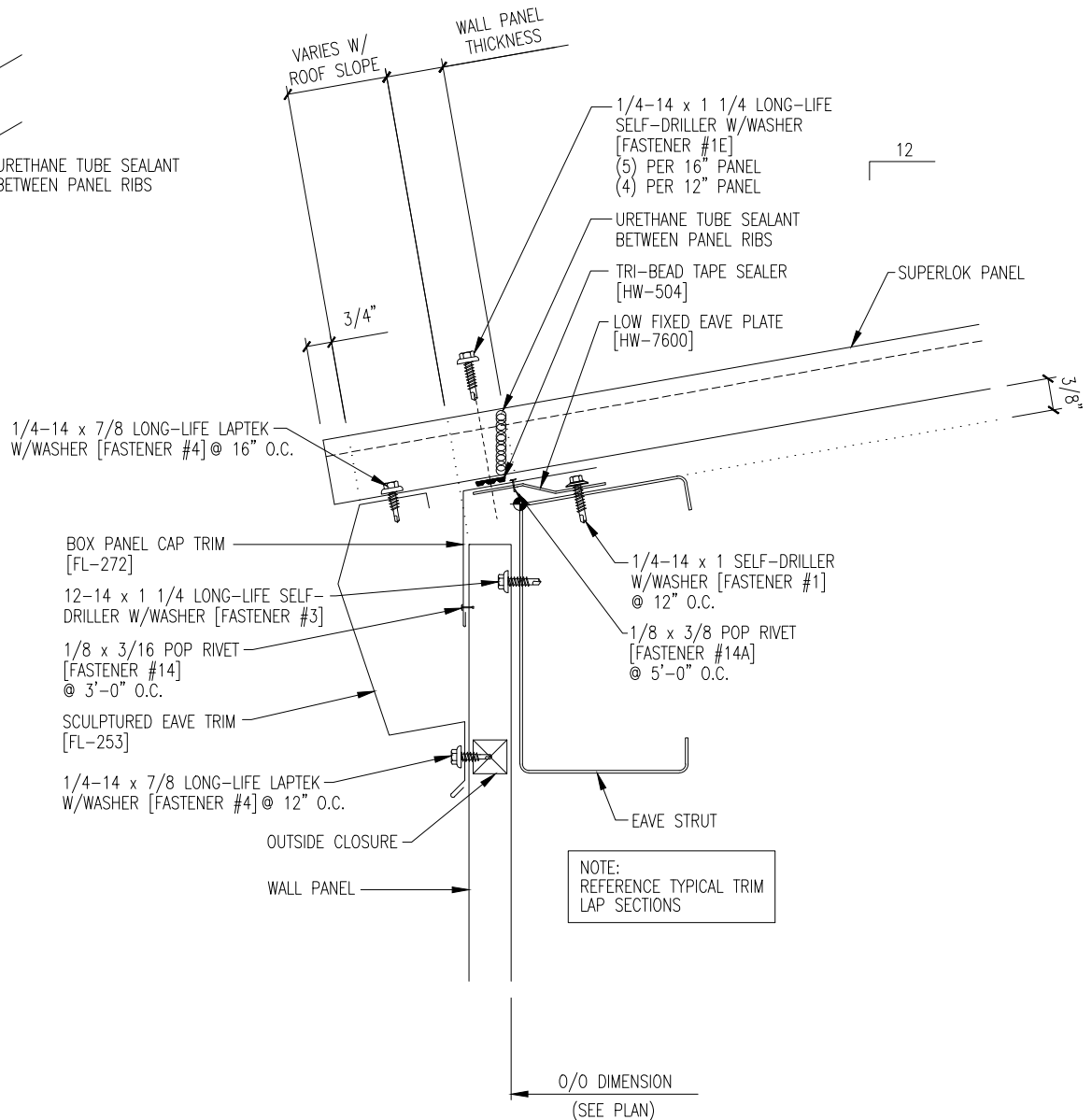
FASTENER INSTALLATION SEQUENCE

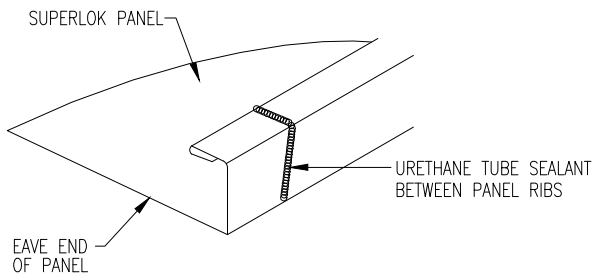
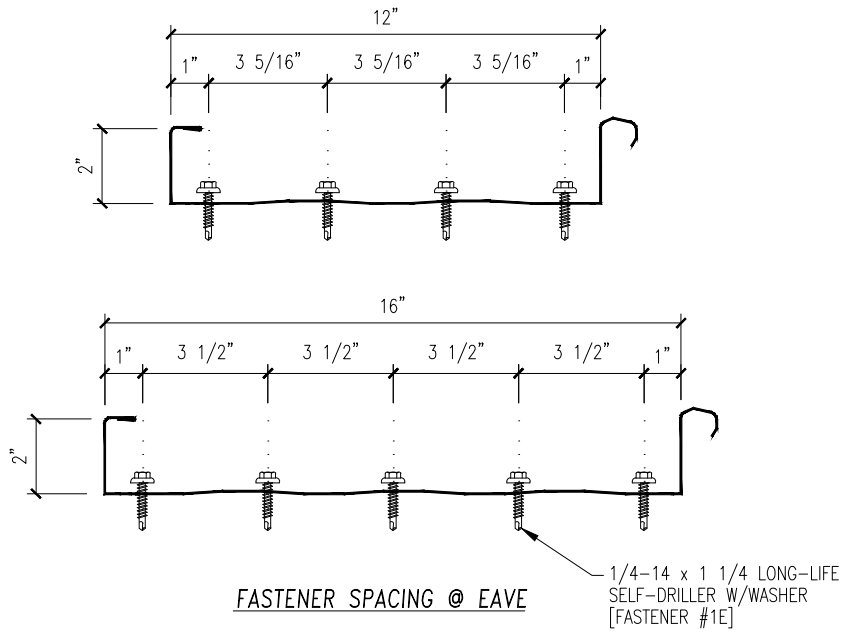




#### EAVE SEALANT DETAIL

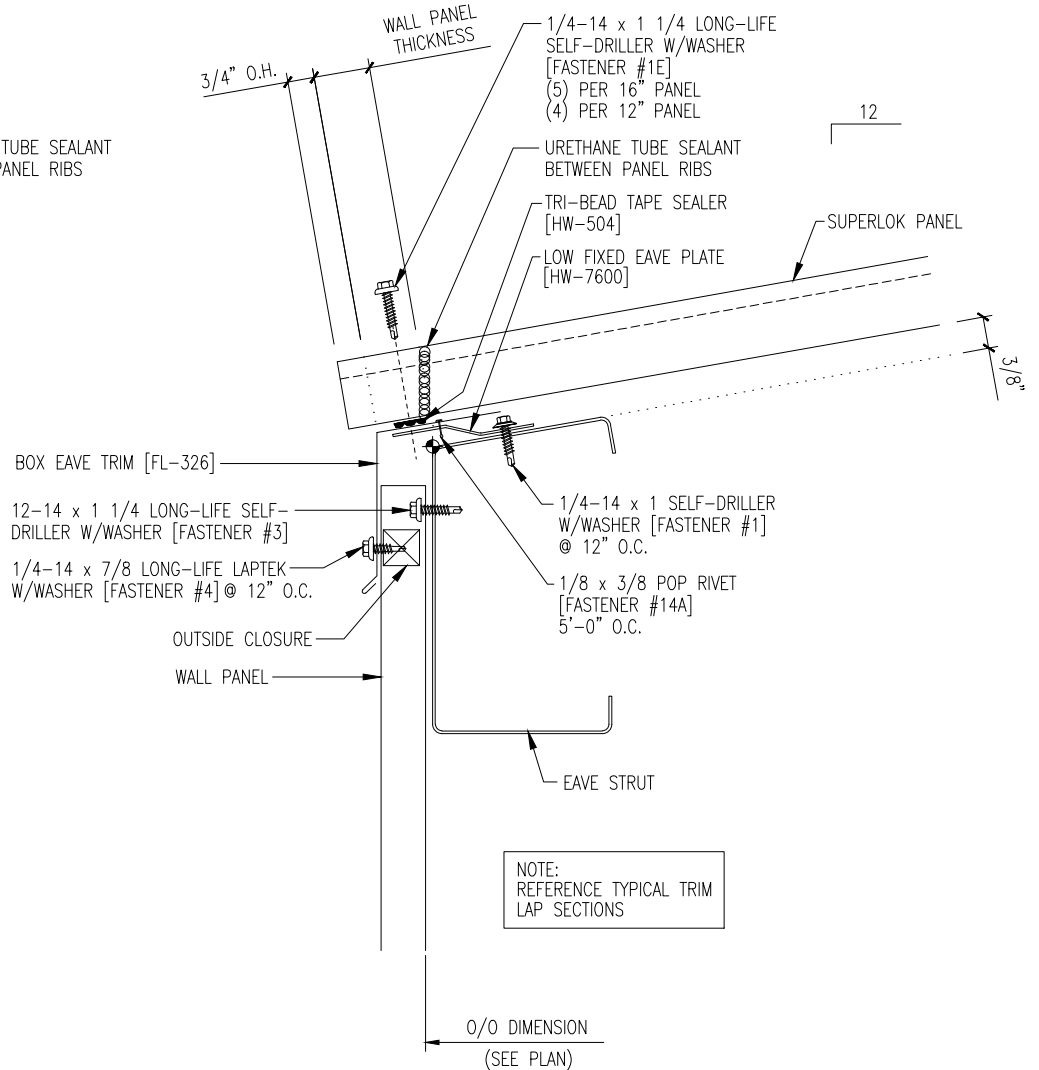
URETHANE SEALANT MUST COME IN CONTACT WITH TAPE SEALER TO FORM A WEATHERTIGHT SEAL

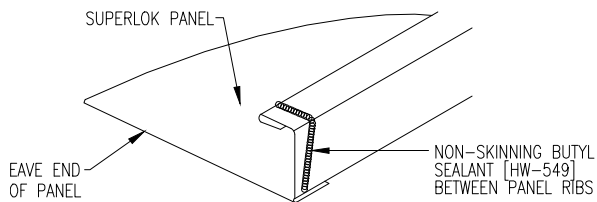




#### EAVE SEALANT DETAIL

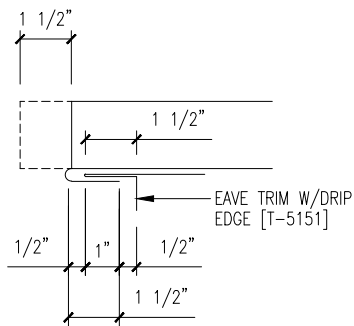
URETHANE SEALANT MUST COME IN CONTACT WITH TAPE SEALER TO FORM A WEATHERTIGHT SEAL





### EAVE SEALANT DETAIL

BUTYL SEALANT MUST COME IN CONTACT WITH THE DRIP EDGE TO FORM A WEATHERTIGHT SEAL



FIELD NOTCH PANEL LEGS AND BEND PAN TO FORM OPEN HEM

