

COMMERCIAL DOOR 2500

HEAVY DUTY COMMERCIAL GRADE DOOR

SERIES

DBCI's Commercial Steel Curtain Roll-Up Door Solutions:

1900 Series (1950 Insulated)

- 26-gauge Grade E galvanized steel
- Low overhead solution

2000 Series (2250 Insulated)

- 16-gauge galvanized steel drums with steel ball bearings
- 26-gauge Grade E galvanized steel

2500 Series (2750 Insulated)

- Heavy duty
- 10-gauge steel slide bolt lock
- Width up to 18 feet

3000 Series (3250 Insulated)

- Moderate to high wind load
- 80 degree windlock design

5000 Series (5250 Insulated)

- Aluminum bottom bar with steel angle reinforcement
- Wind-rated

The 2500 Series is DBCI's heavy duty steel curtain roll-up door with tremendous versatility and unmatched quality. The 2500 Series has deep engagement guides for greater durability and stronger, longer lasting performance. DBCI's commercial-grade steel curtain roll-up doors are designed to meet or exceed operational requirements for commercial doors with little or no maintenance.

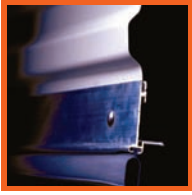


Integrity. Partnership. Quality.



Curtain

- 26-gauge galvanized, Grade E hard steel
- Deep-ribbed corrugation
- Maximum opening size of 18' x 18'
- Flexible wear strips



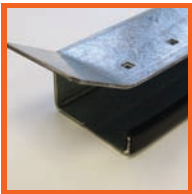
Bottom Bar

- 6063 – T6 aluminum extrusion
- 2" x 1 1/2" galvanized angle
- Bulb astragal
- Stainless steel nuts and bolts



Axle-Drum Assembly

- 1 5/16" O.D. steel axle, 14-gauge
- 11-gauge axle on doors over 10' wide
- Utilizes 12", 16-gauge drums
- Shielded steel ball bearings in drums
- Full top sheet
- Oil tempered torsion springs



A.C.E. Guide System

- 16-gauge galvanized steel
- Adjustable bolt-on head stop
- Polyethylene wear strip
- Pre-punched for lock and attachment fasteners

Hardware

- Saddle clamps with set fasteners
- 10-gauge slide locks; 2 per door
- 16-gauge step plate; 2 per door
- 1/4" steel welded angle T-bracket

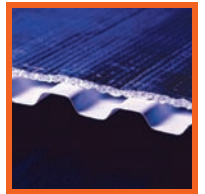
Options

- Chain hoist 4:1 reduction
- Vision panels (17" x 5")
- Top draft stop
- Hood
- Steel mounting plates
- Electric operator
- Low headroom 2400 Series



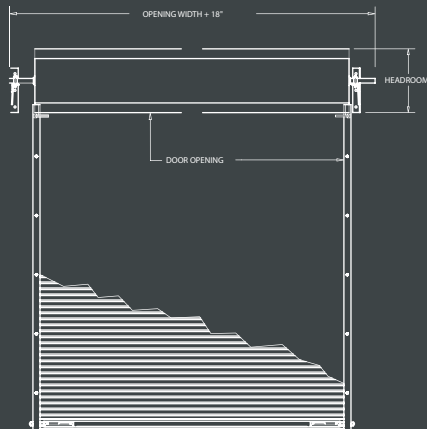
Technical Notes

- Doors up to 10' require 20" of headroom
- Doors 10' to 14' require 22" of headroom
- Doors over 14' require 24" of headroom
- The 2500 Series are wind rated up to 12'0" wide. The MPH rating increases as the door width decreases. For test results on doors up to 12'0" wide, please contact DBCI Sales at 800.542.0501.
- Doors require up to 24" of vertical clearance and 10 1/2" of side room. Smaller doors may require less. For specific measurements, contact DBCI at 800.542.0501.

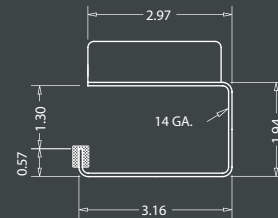


Also available with insulation (2750 Series)

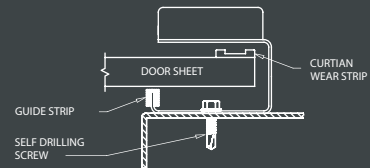
INTERIOR ELEVATION



GUIDE DETAIL

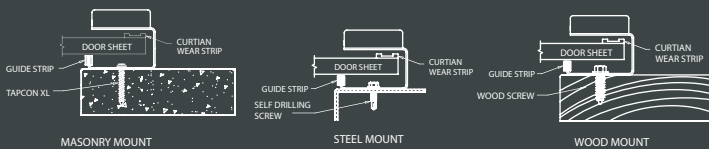


DOOR ENGAGEMENT

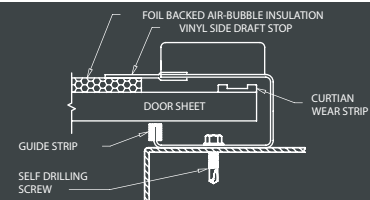


SERIES 2500

GUIDE MOUNTING



INSULATED DOOR DETAIL



SERIES 2750